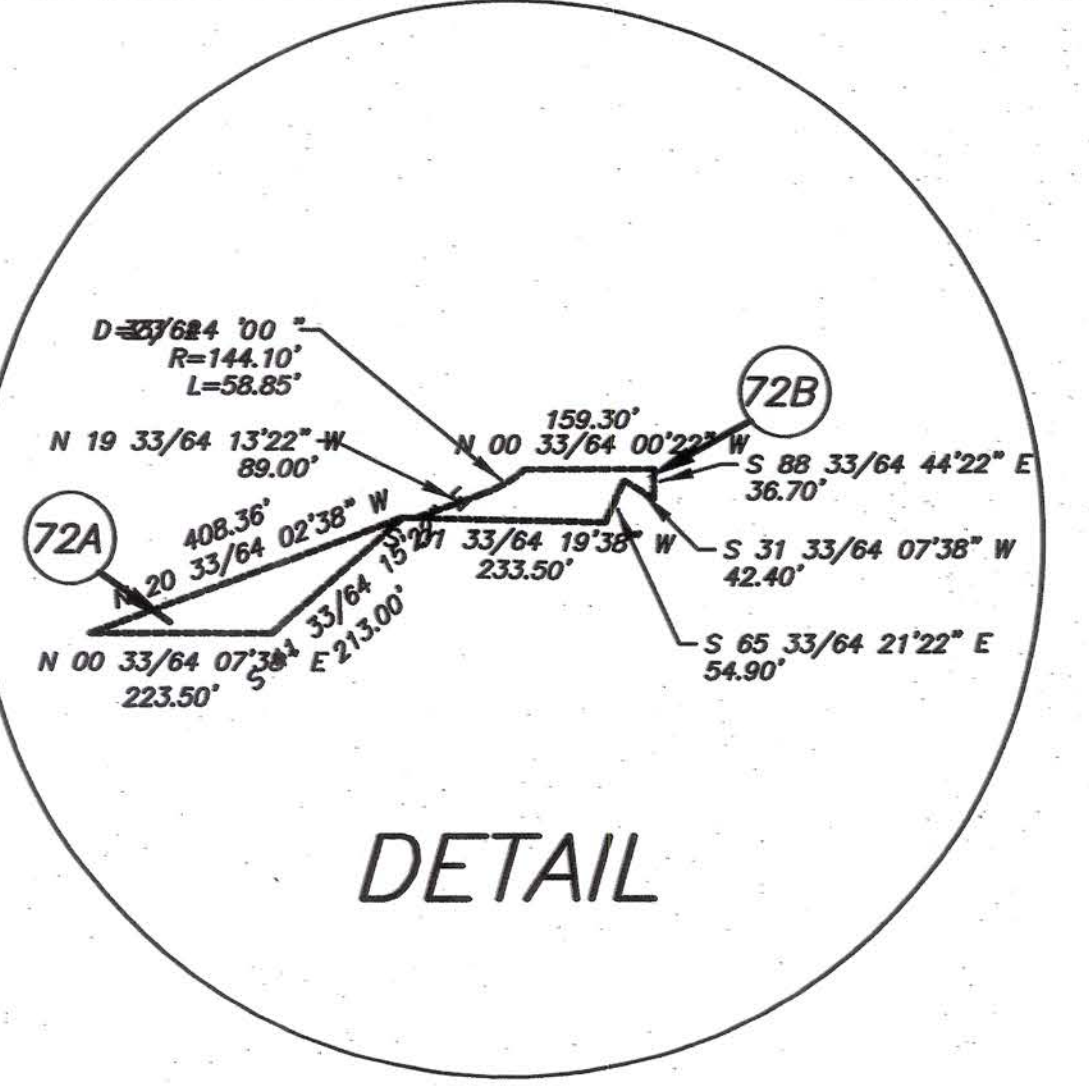


LEGEND		
EXISTING	ULTIMATE	DESCRIPTION
		AIRFIELD PAVEMENT
		TURF RUNWAY
		AIRPORT PROPERTY LINE
		TRACT LINE
		AIRPORT REFERENCE POINT (ARP)
		RUNWAY PROTECTION ZONE
		SURVEY MONUMENT
		ROAD
		NON AERONAUTICAL USE

- NOTES:
- FUTURE ROADWAY SYSTEM SOUTH OF AIRPORT YET-TO-BE DECIDED BY THE CITY OF FORT WORTH AND THE CITY OF BURLESON.
 - SEE PART 77 DRAWING, SHEET #3, FOR PROPOSED HEIGHT LIMITATION FOR AIRPORT VICINITY.

SURVEY MONUMENTS

◆1 (PACS)	◆2 (SACS)	◆3 (SACS)
NAD 83 GEODETIC COORDINATES N 32°33'51.89098 W 97°18'47.11855 ELEV. 697.8	NAD 83 GEODETIC COORDINATES N 32°33'39.27176 W 97°18'30.81892 ELEV. 704.0	NAD 83 GEODETIC COORDINATES N 32°33'23.16599 W 97°18'37.83943 ELEV. 688.8



NO.	REVISIONS	BY	CHK'D	DATE
1	ADD NON AERONAUTICAL USE AREA	MCKE		1/19/04

TEXAS DEPARTMENT OF TRANSPORTATION AVIATION DIVISION <input type="checkbox"/> ALP APPROVED ACCORDING TO FAA AC 150/5300-13 CH 7 PLUS THE REQUIREMENTS OF A FAVORABLE ENVIRONMENTAL FINDING PRIOR TO THE START OF ANY LAND ACQUISITION OR CONSTRUCTION AND AN FAA FORM 7460-1 SUBMITTED PRIOR TO ANY CONSTRUCTION ON AIRPORT PROPERTY <input type="checkbox"/> ALP APPROVED ACCORDING TO FAA AC 150/5300-13 CH 7 PLUS THE CONDITIONS/COMMENTS IN LETTER DATED:	AIRPORT SPONSOR CURRENT AND FUTURE DEVELOPMENT DEPICTED ON THIS ALP IS APPROVED AND SUPPORTED BY AIRPORT SPONSOR
TITLE, AIRPORT SPONSOR'S REPRESENTATIVE _____ DIRECTOR, AVIATION DIVISION	SIGNATURE _____ DATE
PREPARED BY: 5910 W. Plano Parkway Suite 200 Plano, Texas 75093	DESIGNED BY _____ DATE DRAWN BY _____ DATE CHECKED BY _____ DATE

**AIRPORT PROPERTY MAP
FORT WORTH SPINKS AIRPORT
FORT WORTH, TEXAS**

