



University Drive Improvements Phases I and II

Transportation and Public Works Department

September 20, 2022

Purpose

- Provide an update on corridor improvements along University Drive

Phase I – West Rosedale Street to Riverfront Drive

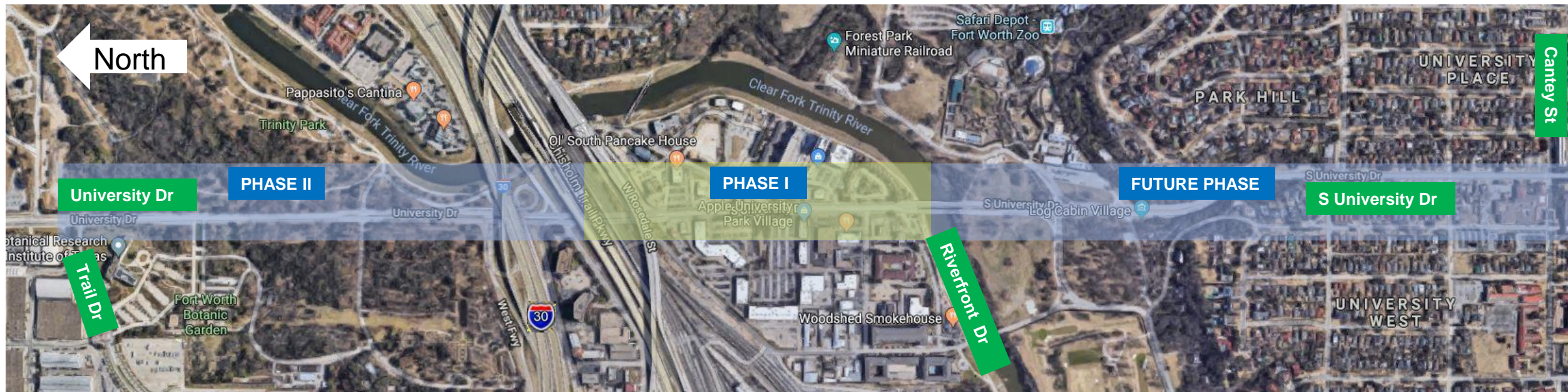
- Scope
- Budget
- Schedule
- Public Outreach and Access

Phase II – Trail Drive to West Rosedale Street

- Scope
- Budget
- Schedule
- Provide an update on corridor improvements along West 7th

University Drive Corridor

Trail Drive to Cantey Street



Project Need

- Traffic/pedestrian safety decline over years
- Car-centric facility – Improvements needed to enhance alternative mobility
- Aesthetically not representative of gateway to cultural landmarks
- Inadequate signage to attractions, trails and other amenities

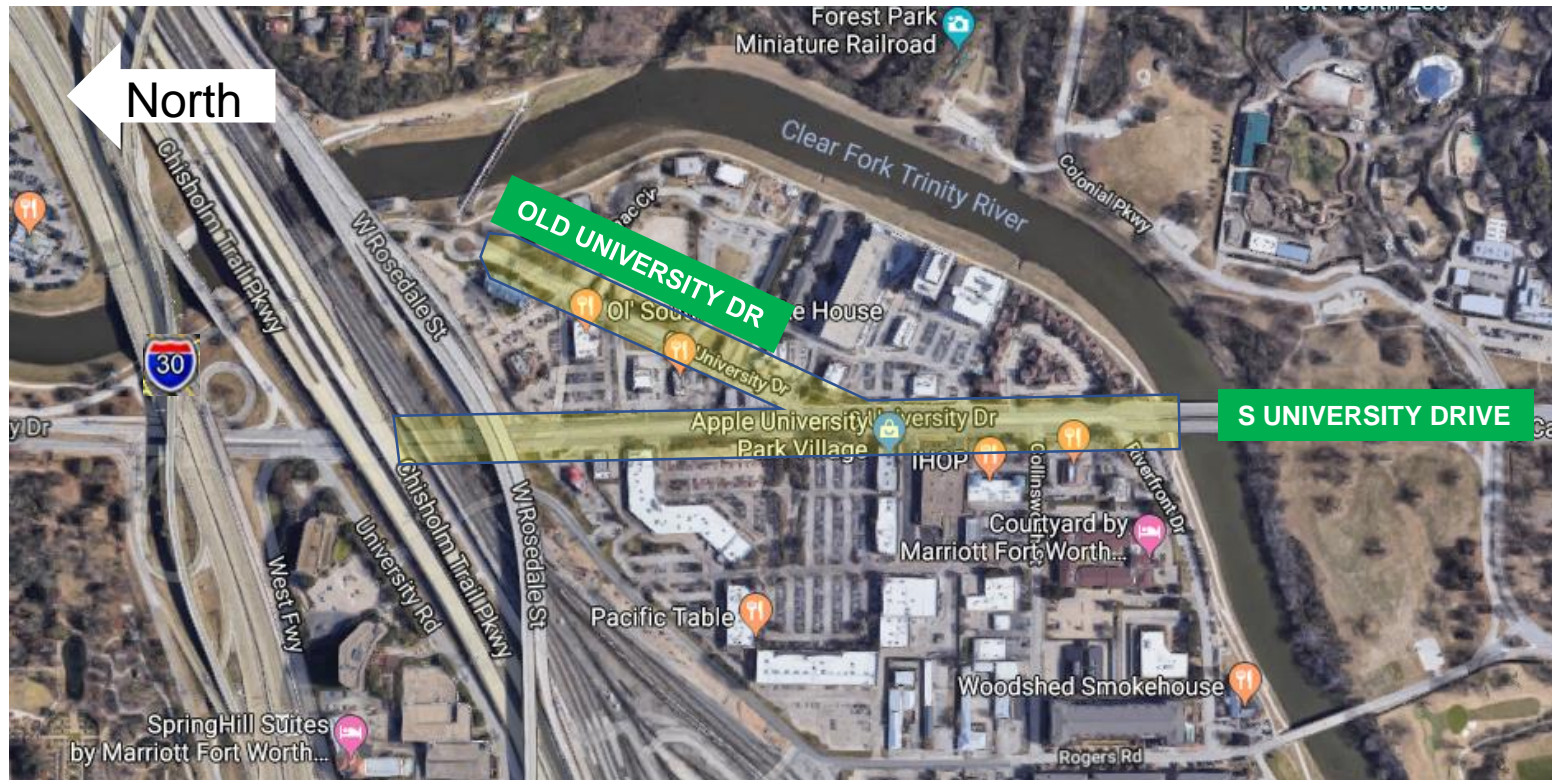


Phases I and II

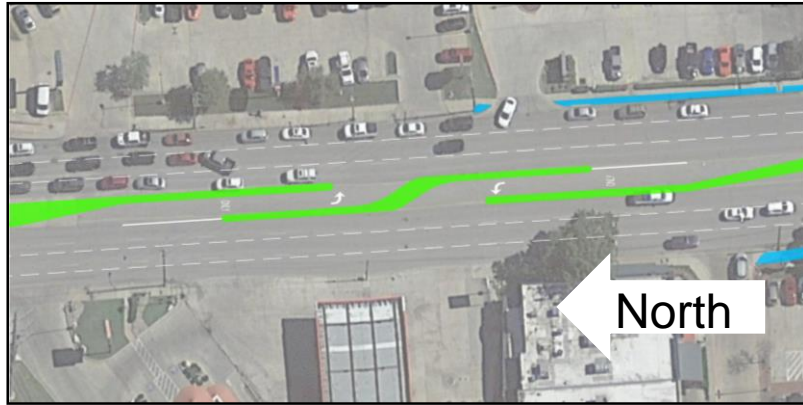
- Projects have similar scopes
- Focus is on improving safety, enhancing alternative modes of transportation, signage and aesthetics
- Neither phase intends to reconstruct or widen the existing pavement
- Total Estimated Cost
 - Phase I: \$5.73M
 - Local Funds
 - Phase II: \$7.7M
 - 100% Federal Funds

Phase I Limits

S. University Drive – W. Rosedale Street to Riverfront Drive



Phase I Scope



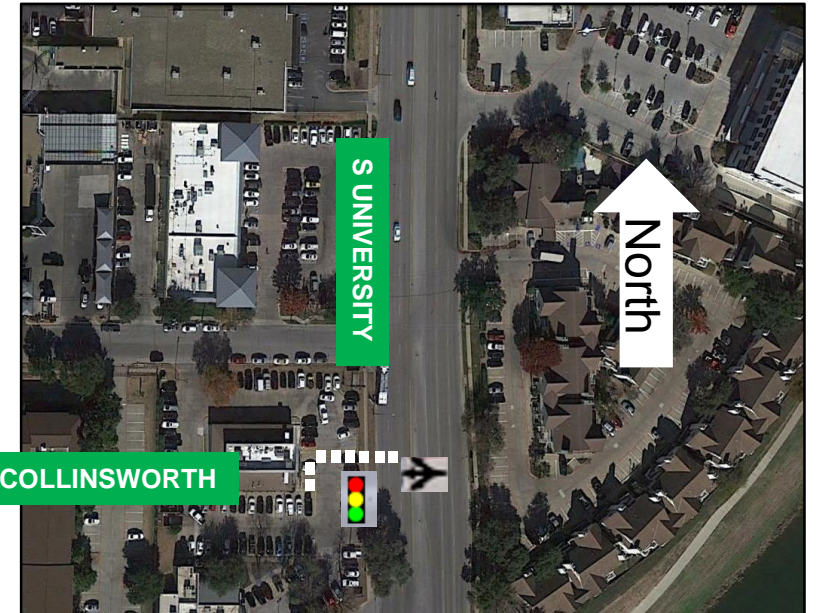
Improve traffic safety by adding medians



Incorporate aesthetic improvements in median and at crosswalks



Streetlights



Improve pedestrian safety by adding/removing crosswalks at intersections and provide traffic signal at Collinsworth St.

Replace and relocate sanitary sewer north of Old University Drive

Phase I Scope - continued



Improve bus stop facilities to make ADA compliant and to facilitate installation of shelters by Trinity Metro



Add roadway directional and wayfinding signage

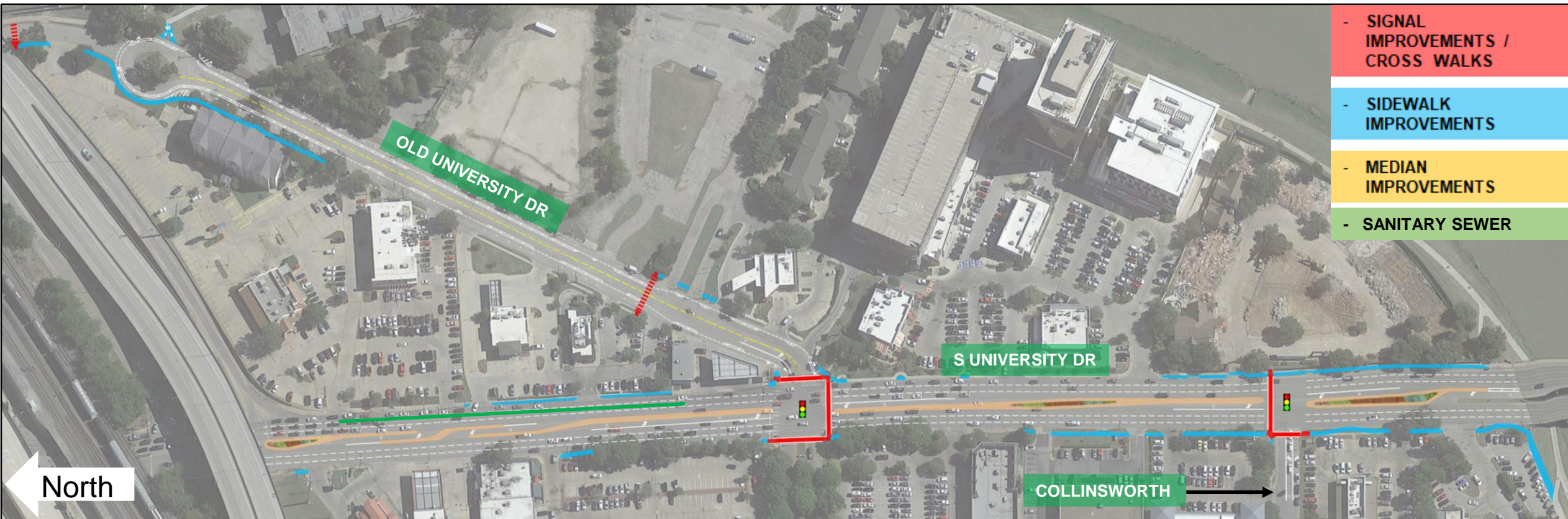
S. University Drive – Phase I

Existing Conditions



S. University Drive – Phase I Proposed Improvements Concept Plan

- SIGNAL IMPROVEMENTS / CROSS WALKS
- SIDEWALK IMPROVEMENTS
- MEDIAN IMPROVEMENTS
- SANITARY SEWER



S. University Drive – Phase I Proposed Improvements south of W Rosedale



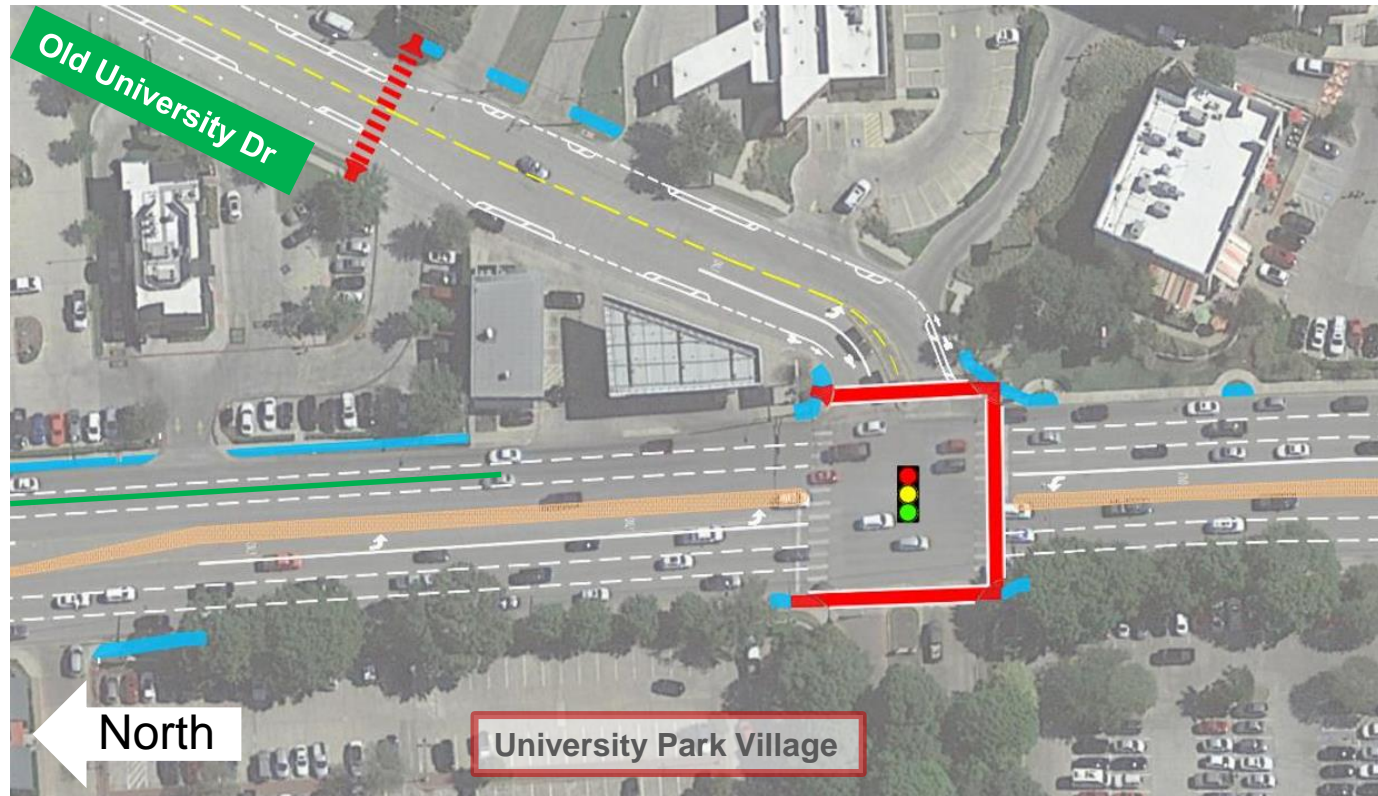
- SIDEWALK
IMPROVEMENTS

- MEDIAN
IMPROVEMENTS

- SANITARY SEWER

S. University Drive – Phase I

Proposed Improvements at Old University Drive



- SIGNAL
IMPROVEMENTS /
CROSS WALKS

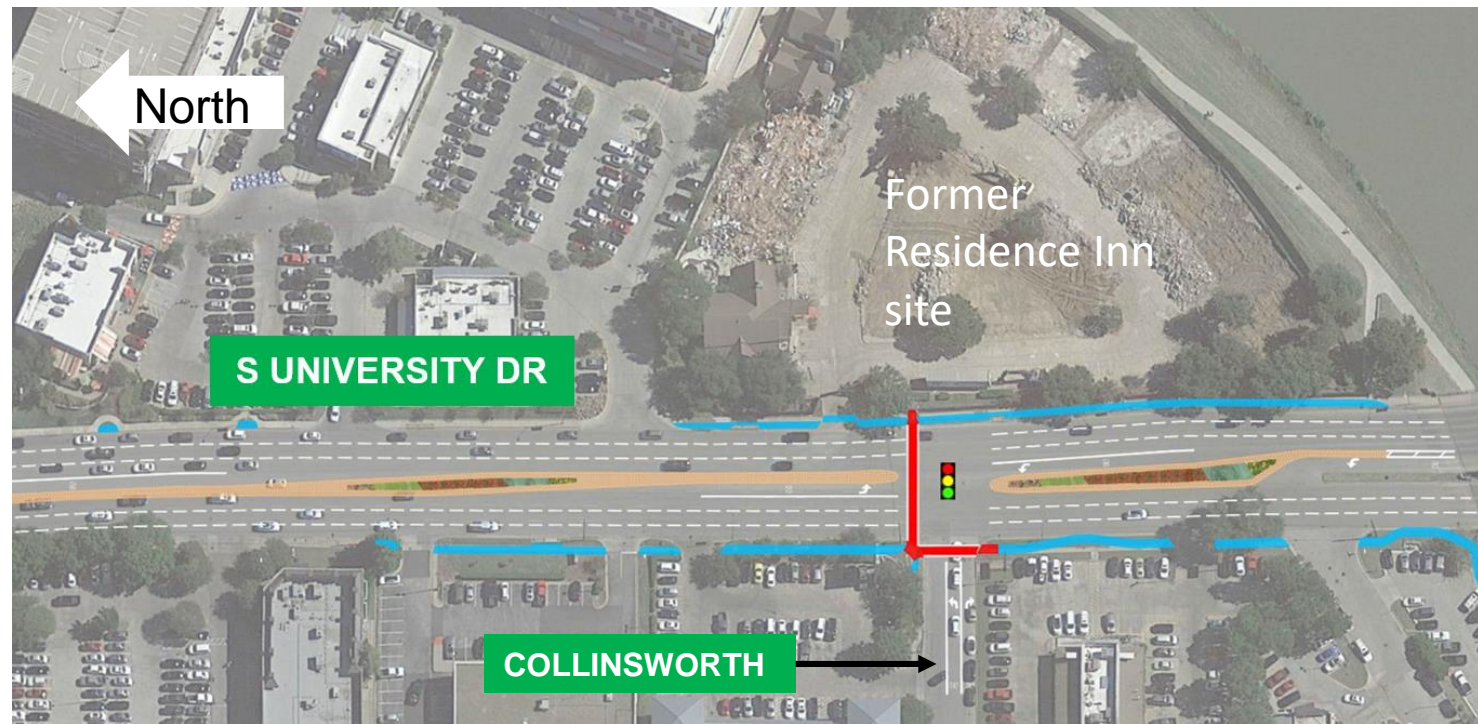
- SIDEWALK
IMPROVEMENTS

- MEDIAN
IMPROVEMENTS

- SANITARY SEWER

S. University Drive – Phase I

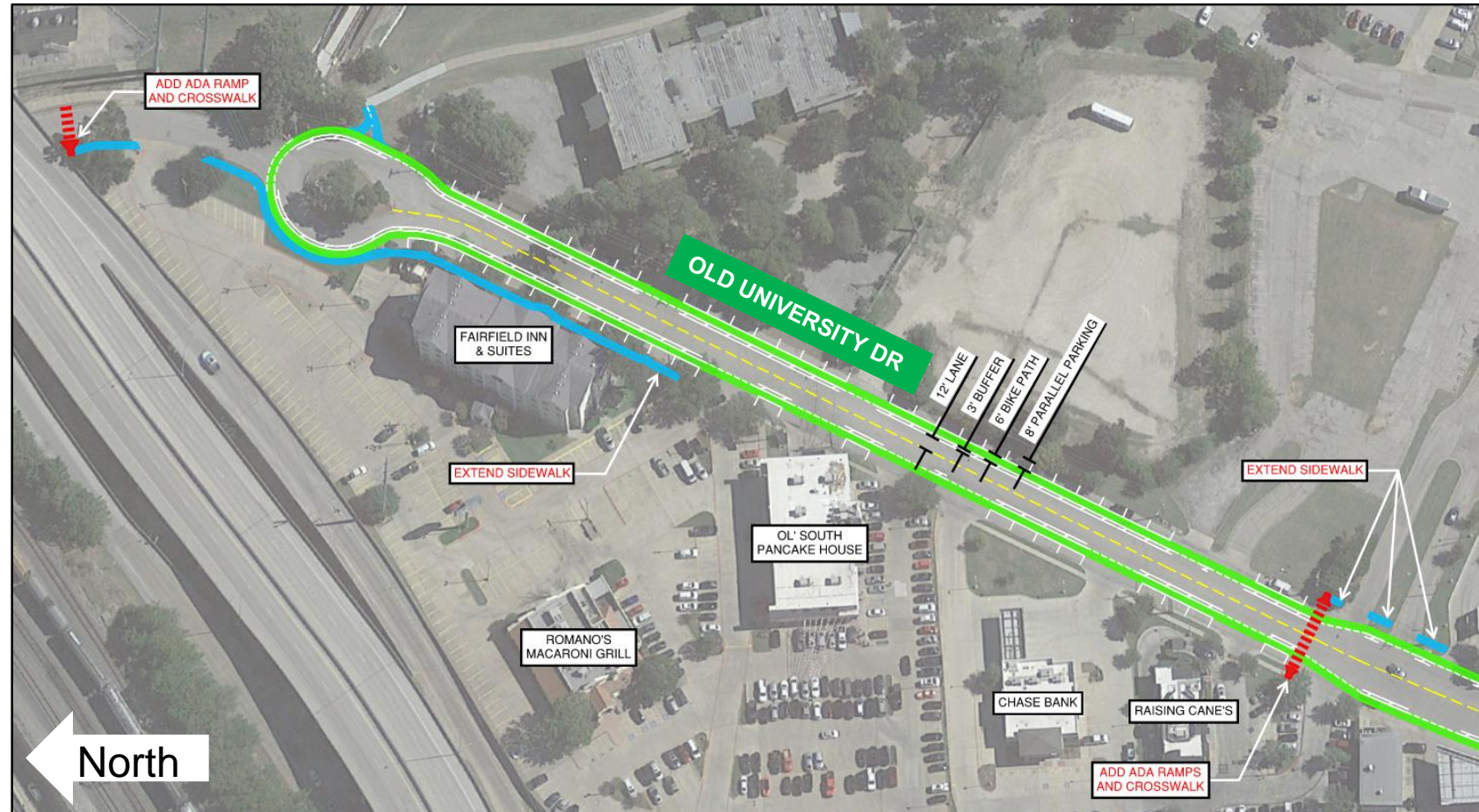
Proposed Improvements south of Old University Drive



- SIGNAL IMPROVEMENTS / CROSS WALKS
- SIDEWALK IMPROVEMENTS
- MEDIAN IMPROVEMENTS

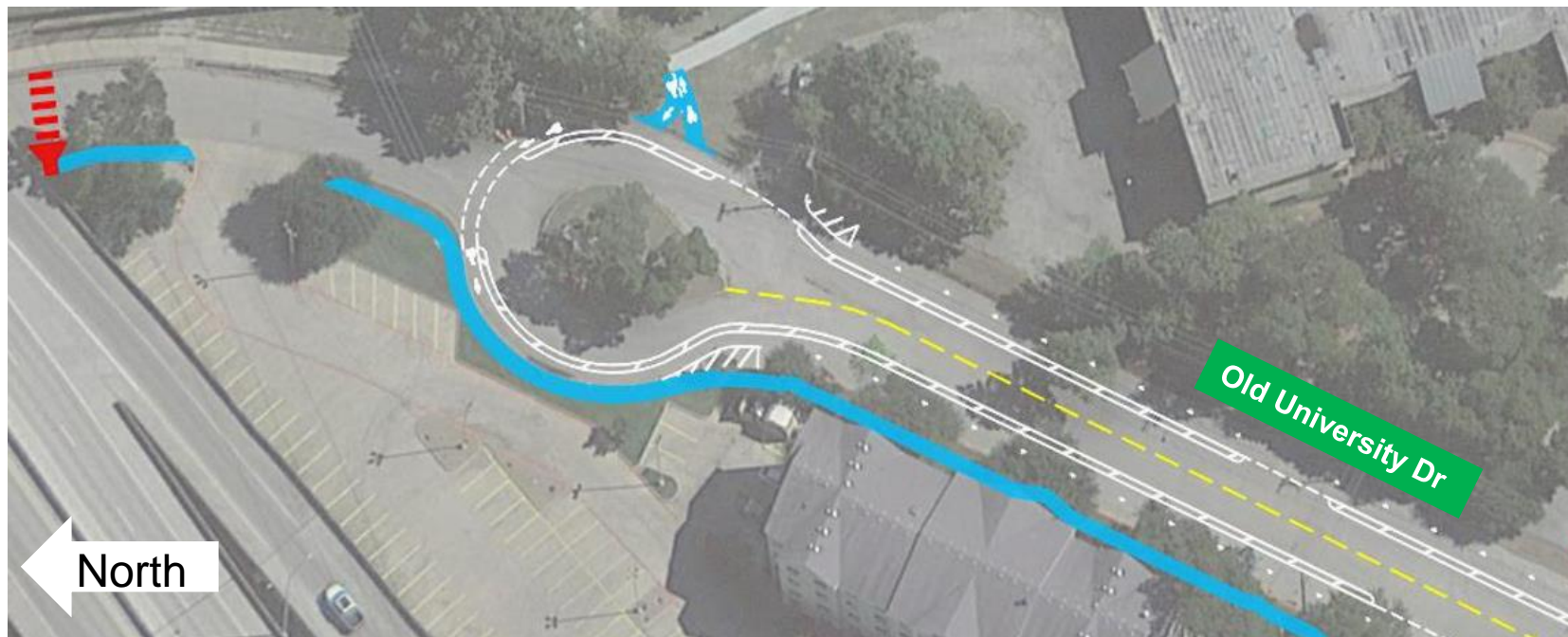
S. University Drive – Phase I Proposed Improvements Concept Plan

- Improve bike/pedestrian connections to Trinity River trail system and provide safer crossing on Old University Drive
- Add parking and bike lanes along Old University Drive connecting to Trinity Trails
- Extend sidewalks to fill existing gaps to connect to Trinity trails
- Reroute pedestrians to safer Old University connections by signing sidewalk closures at Rosedale overpass



S. University Drive – Phase I

Proposed Improvements northeast end of Old University Drive



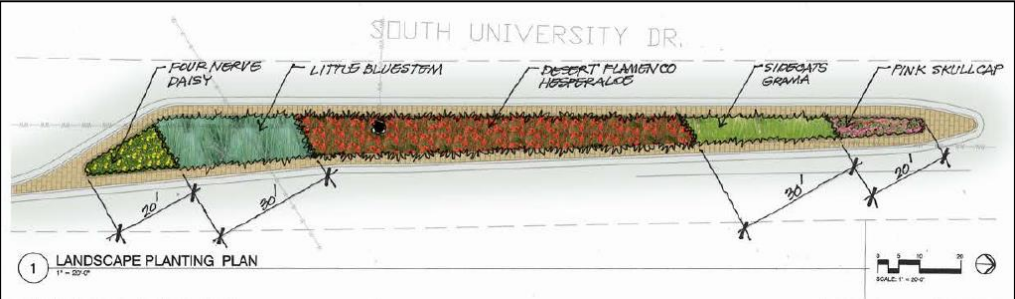
- CROSS WALKS

- SIDEWALK
IMPROVEMENTS

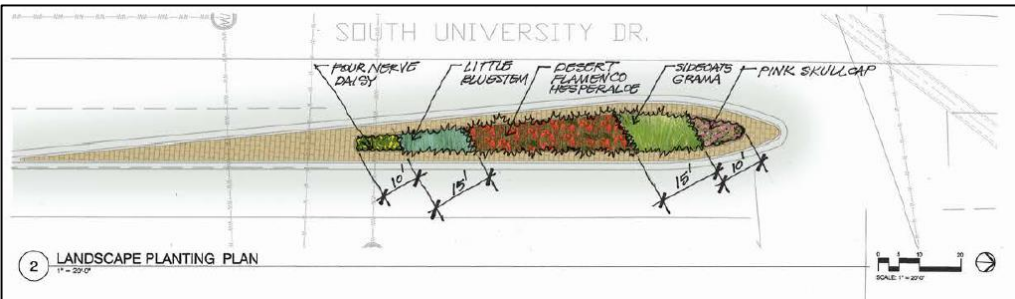


S. University Drive – Phase I

Proposed Landscape Improvements

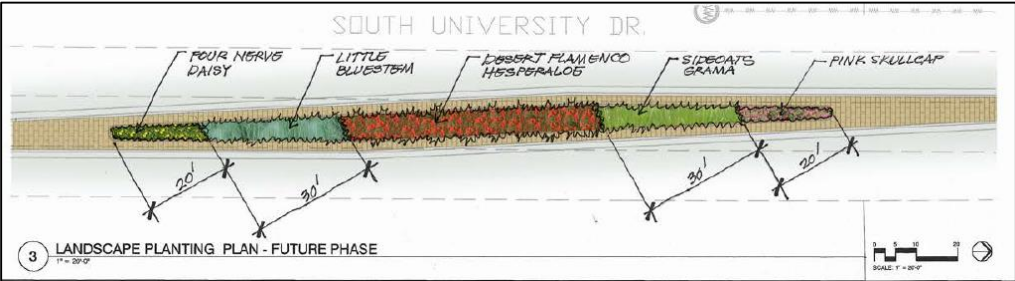


Collinsworth



W Rosedale

Collinsworth



Old University



Four Nerve Daisy
(8 – 12 inches width/ht.)
at South Nose of Medians



Pink Skullcap
(2 - 4 feet x 1 – 2 feet ht.)
at North Nose of Medians



Desert Flamenco Hesperaloe
(30 inches x 30 inches)
Central Plant at Medians



Sideoats Grama
(2 feet x 2 – 4 feet ht.)
Intermediate Plant at Medians



Little Bluestem (Spring/Summer, Fall, and Winter)
(3 feet + ht.)
Intermediate Plant at Medians



Project Cost *

S. UNIVERSITY DRIVE – PHASE I

Construction Budget.....	\$3,400,000
Funding - 2018 Bond Program.....	\$5,300,000
Funding – Water & Sewer Capital Project Fund.....	\$430,000

* Funding in excess of construction budget is for right-of-way/easement acquisition, engineering, permitting, project management, etc.



Phase I Project Schedule

- Right of Way Acquisition.....Completion Pending
- Utility Clearance/ Avoidance..... Oct 2022
- Construction*.....Oct /Nov 2022 – Oct/Nov 2023

* To minimize impact construction activity has been restricted during all major events like the Colonial tournament, Spring break, etc.

Phase I: Preconstruction Public Outreach

Preconstruction

- Stakeholder outreach area: Rosedale to Park Hill Dr. south of Colonial Parkway
- 726 community meeting notices mailed 2 weeks prior to every meeting
- Three public meetings, including one dedicated to business/organization stakeholders only
 - March 20, 2019 (at the Zoo)
 - July 8, 2019 for University Business Stakeholders (at Botanic Garden)
 - September 16, 2020 (Virtual)
- Concerns expressed in the joint meeting with business stakeholders have been addressed
- Presentation given to Fort Worth Zoo staff at 60% milestone
- Individual concerns were brought up during the easement acquisition effort and were addressed to satisfaction of the owners resulting in the granting of easements
 - Jack In the Box, Trademark, Raising Cane's, University Park Village, IHOP and other easement grantors



Public Notice Target Area Map: I30 (W Rosedale) to Park Hill Dr in the south, Rogers Rd/Colonial Dr to Forest Park Blvd in the east

Phase I: Construction Public Outreach

Construction

- Preconstruction Community Meeting:
October 12, 2022, 6:00 PM at Fort Worth Zoo
- Communication
 - Monthly Website Updates: <https://www.fortworthtexas.gov/projects/cfw-universitydrive>
 - Citibot - Short general periodic project updates by text. Requires enrollment by texting "Hello"
 - Monthly on-site construction meetings open to the public
 - Quarterly City News updates
 - Six-month mailed construction update
- Access Plans (Pedestrian and Vehicular) for Businesses during Construction:
 - 1 lane in each direction to be closed to construct the median, CFW will control footprint
 - Alternate pedestrian access / detour routes when constructing sidewalks or curb ramps will be designated with proper signage
 - Driveway access will be maintained, or alternate access provided. Impacted property owners will be notified in advance by the project team.
- PM Contact Info: Mark McCoy 214-908-3772

University Dr Phase II – Trail Dr to W. Rosedale St



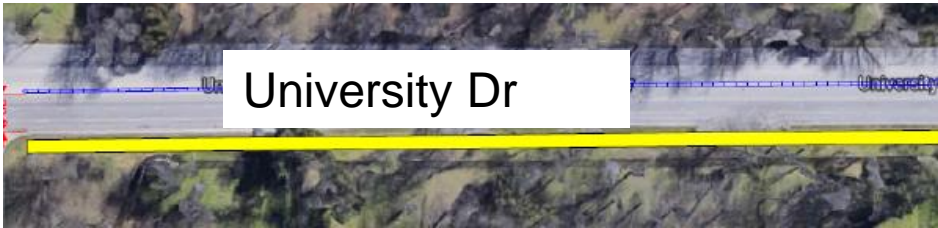
University Drive – Phase II Proposed Improvements Schematic



- SIDEWALK IMPROVEMENTS
- MEDIAN IMPROVEMENTS
- LANDSCAPE



Phase II Scope



5' wide sidewalk along the westside of University Drive,
Trail Drive to Rock Springs Road



Incorporate aesthetic improvements in
median and at crosswalks



Streetlights under the three
bridges associated with the
IH30 and Chisholm Trail
interchanges

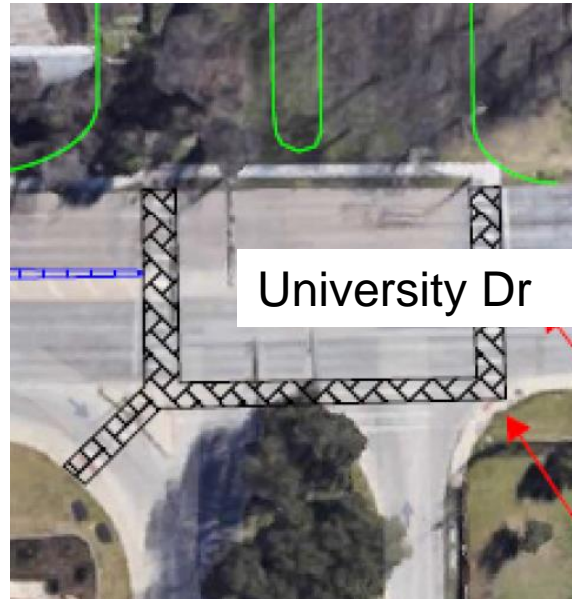


Improve bus stop facilities to make ADA
compliant and facilitate installation of
shelters by Trinity Metro from Trail Dr to
Rock Springs Rd

Phase II Scope - continued



Landscape and irrigation improvements between Rock Springs Road and •IH30



Crosswalk improvements at the intersection of Trail Dr. Signal and cross walks at Botanic Garden Boulevard and Rock Springs Road



Add roadway directional and wayfinding signage



Project Cost *

UNIVERSITY DRIVE – PHASE II

Construction Budget.....	\$6.4 million
Total Funding – TXDOT.....	\$7.7 million

* Funding in excess of construction budget is for right-of-way/easement acquisition, engineering, permitting, etc.



Phase II Project Schedule

- AFA Execution..... June 8, 2021
- Selection of Design Consultant Feb 2022 – Aug 2022
- Award Design Contract..... Sept 2022
- **Stakeholder Outreach.....Spring 2023 – Spring 2024**
- Design Completion.....;..... Spring 2024
- Bid and award..... Summer 2025
- Construction..... Spring 2026 - Spring 2027

West 7th Project Update

- **70% Construction Complete**
- Remaining Work Items
 - Median Construction from Foch St to University Dr
 - Railroad Sidewalk and Signals
 - Landscaping and Irrigation
 - Paving and Pavement Markings
- Anticipated Completion: November 2022



QUESTIONS

