

City of Fort Worth MEDICARE RETIREES OPEN ENROLLMENT PLAN YEAR 2021

Presented By
Human Resources Department

The graphic features a photograph of an elderly couple embracing. A green circular logo with a city skyline and the text 'GET COVERED STAY COVERED' is overlaid on the image. Below the logo is a QR code and a URL. The bottom of the graphic contains text about Accolade support and the enrollment dates.

FORT WORTH[®]

GET COVERED
STAY COVERED
J

Log on to the
NEW cfwbenefits.com
to Get Covered and
Stay Covered.

Scan QR code with
your phone's camera
to log in.

When you need answers to your simplest to most critical questions around benefits and coverage for you and your family, Accolade, our New Health and Benefits Support Team, can help you every step of the way. Quickly reach out to them by calling 833-909-2353 to get questions answered about Open Enrollment. Then starting in 2021 get the responses you need around the topics that matter most, like finding a doctor or understanding your medical bills.

Open Enrollment is
**OCT. 19th -
NOV. 6th**

Accolade | For questions call 833-909-2353 or
visit: <https://member.accolade.com>

No Changes for 2021?

Medical/Dental

- Your plan will stay the same
- Your coverage will carry over
- You don't have to do anything

Premium

- Medical premium remaining the same
- Dental and vision premiums remaining the same



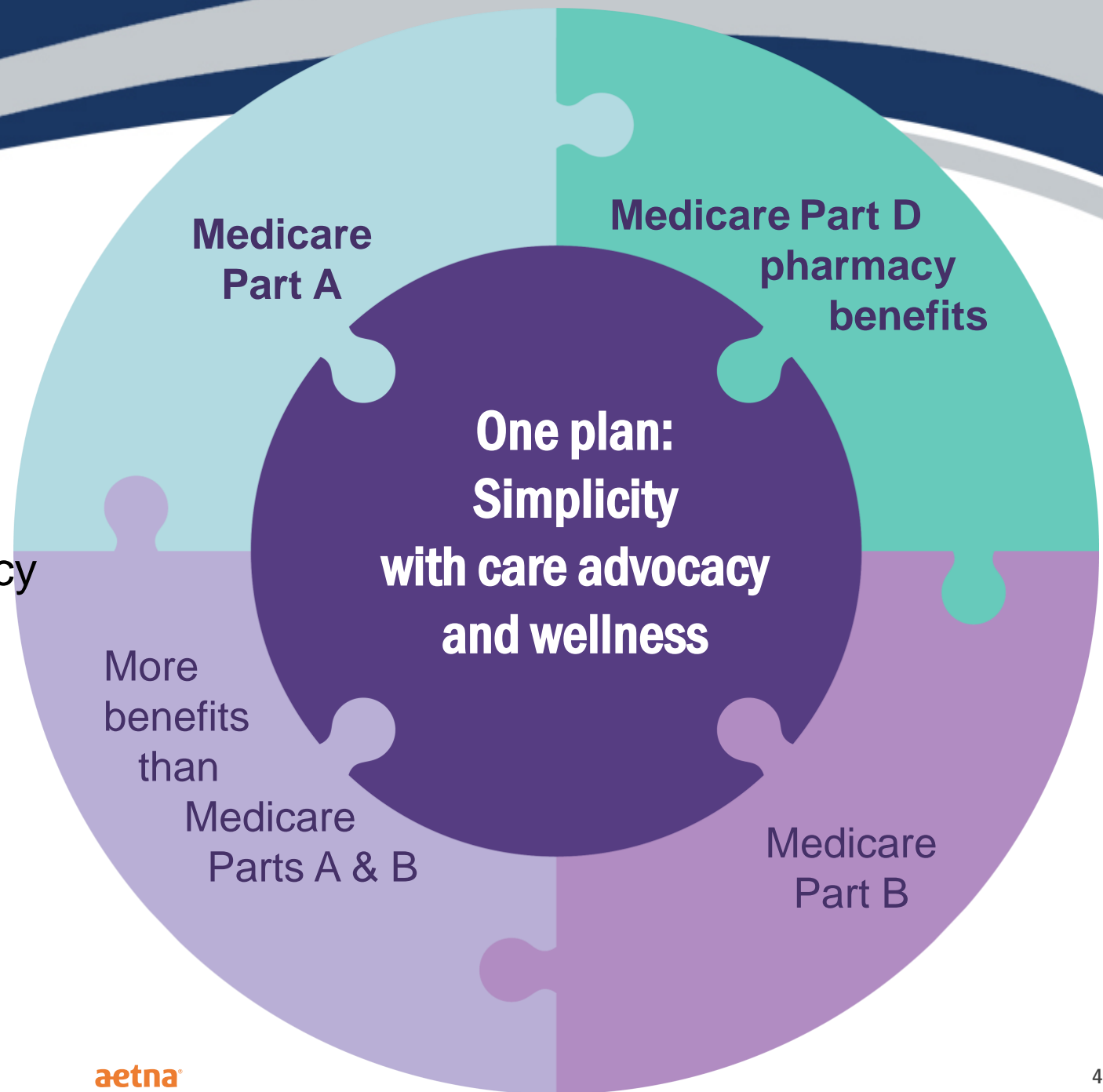
Aetna Medicare Advantage informational meeting
The City of Fort Worth

aetna[®]

How your Medicare Advantage plan works

- One step for you
- One ID card for medical and pharmacy
- A monthly Explanation of Benefits each for medical and pharmacy

Medicare Advantage plans will cover all Medicare-approved services



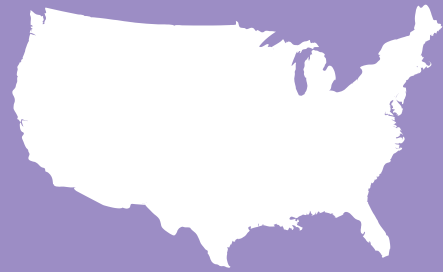
Simplicity

Medicare Advantage ID card

Medicare Advantage is an all-in-one plan

- Easy to use
- One ID card for medical and pharmacy needs
- More benefits than Original Medicare Parts A and B
- Care advocacy programs and wellness benefits to improve overall health
- Single monthly EOB for medical services and single monthly EOB for pharmacy services

How we make it simple to
see your doctors



**You're
covered**

in or out of network

Aetna Medicare Advantage Preferred Provider Organization with an Extended Service Area (PPO ESA)

Access to providers nationwide

Your doctor does not have to be in our network

Same benefits in or out of network

No referrals needed

Covers you nationally when traveling

Will my doctors accept this plan?

Yes, they can, if they are:

Eligible to receive
Medicare payment

Willing to accept your Aetna Medicare
Advantage plan

**Many doctors do. Your copays or cost-share amounts are
the same both in and out of network.**



Will my doctors accept this plan?

**It's easy to find out if your doctor accepts the
Aetna Medicare Advantage PPO Extended Service Area (ESA) plan**



Call
1-888-267-2637 (TTY: 711),
Monday – Friday,
8 a.m. to 6 p.m. all time zones



Click
aetnamedicare.com
Can't find your doctor online?
Call us.
It's likely they may still accept the plan.

**Medical benefits
designed for
The City of Fort Worth**

Your medical benefits

	Medicare Advantage plan
Deductible	\$0
Out-of-pocket maximum	\$1000
Preventive care	\$0
Primary care office visit	5%
Specialty care office visit	5%
Inpatient hospital	\$250 per stay
Outpatient surgery	5%
Emergency room (worldwide)	\$50 waived if admitted

**Prescription drug benefits
designed for
City of Fort Worth**

Aetna's Prescription Drug Plan offers you:



65,000 pharmacies- with 24,000 preferred pharmacies nationwide *



Aetna Rx Home Delivery[®]



Easy-to-use online tools

*The number of pharmacies listed is approximate and is subject to change, due to CMS' "any willing provider" requirement as well as ongoing contracting efforts. Data is current as of 7/1/18 and is subject to change.



Your prescription drug benefits

	Aetna Part D plan
Deductible	\$100
Tier 1 Generics	\$10
Tier 2 Preferred Brand	\$30
Tier 3 Non-preferred Brand	\$50
Tier 4 Specialty	20% but not more than \$200
Coverage gap	Full gap coverage
Need help looking up a covered	Call us 1-888-267-2637

What is a Healthy Home Visit?

A health care professional comes to your home.



Well-being assessment



Review medications



Total health screening



Home safety check

We can share results with your doctor.

We can provide referrals into support programs.

**We can help you try to
reach your health goals –
whatever they are**

97.7% overall satisfaction
with Aetna Medicare Advantage plan coverage
and benefits*

*2018 Aetna Medicare Advantage group plan member satisfaction survey



**Important
information!**



Aetna

**1-888-267-2637 (TTY: 711), 8 a.m. to 6 p.m. all
time zones, Monday through Friday**



[aetnamedicare.com](https://www.aetnamedicare.com)

**Need help with looking up covered drugs or questions call us
at**

**1-888-267-2637, 8 a.m. to 4:30 p.m. CT,
Monday through Friday by
October 26, 2020**



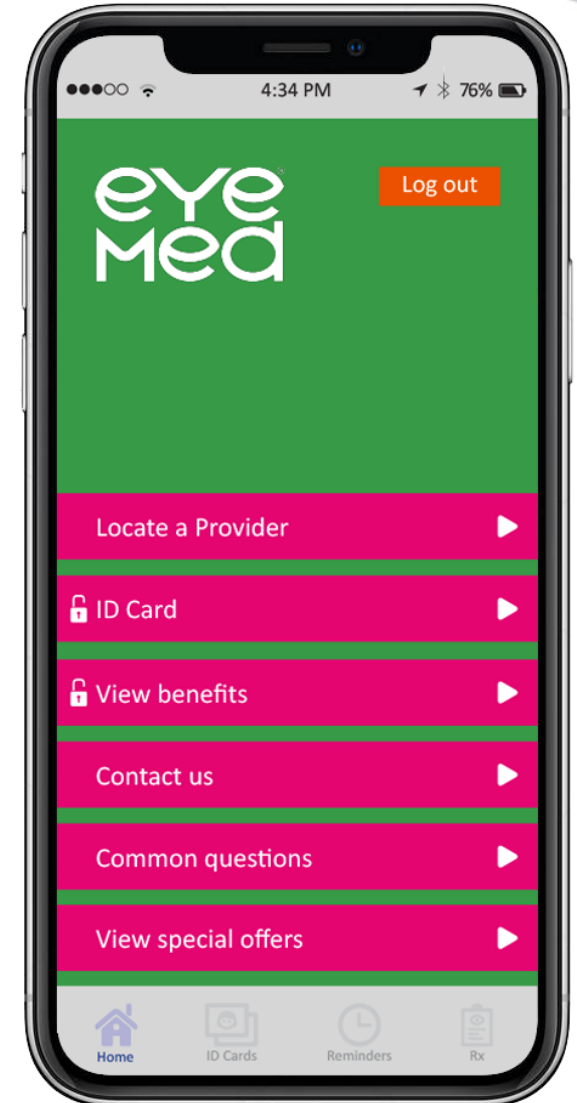
**Enjoy your Aetna
Medicare
Advantage plan**

VISION PLAN!

EYEMED

NEW Vision Plan Highlights

- **Exam \$10 copay**
- **Frames \$130 frame allowance + 20% discount over \$130 every 24 months**
- **Lenses – \$20 copay for single, bifocal, trifocal and lenticular**
 - Various copays for progressive tiers
 - Various copays for reflective coating
 - Every 12 months
- **Contacts \$125 allowance + 15% discount over \$125**
 - Every 12 months
- **Rates range from \$6.00 per check for individual to \$16.00 per check for family**



DENTAL PLANS

Provider Delta Dental

DPPO Plan Similarities



- ✓ You can use any Dentist in the US
- ✓ \$50 deductible per person
- ✓ No referrals needed for specialty care
- ✓ Balance bill exposure for services by out of network providers



Delta Dental Benefits – DPPO

	Dental PPO (DPPO)	
	DDPO - Low Option*	DPPO - High Option
Deductible	\$50 per person/ \$150 per family	\$50 per person/\$150 per family
Annual Maximum	\$1,000 per person	\$2,000 per person
Provider	Unlimited - PPO Network available	Unlimited - PPO Network available
Preventive & Diagnostic Care	Plan pays 100% with no deductible	Plan pays 100% with no deductible
Basic Restorative Care	Plan pays 50%	Plan pays 80%
Major Restorative Care	Plan pays 50%	Plan pays 50%
Orthodontia	Plan pays 50%	Plan pays 50%

*You may be balance billed for going to a non-Delta Dental PPO network dentist. You will be billed the difference between the PPO fee and the Delta Dental Premier dentist fee or the Out-of-Network dentist fee.

DHMO PLAN

- ✓ No deductibles or calendar-year maximums
- ✓ Must use contracted Dentists & choose a PCD
- ✓ Pediatric dentist for children up to age 8
- ✓ Orthodontic coverage is included for adults & children



Delta Dental Benefits - DHMO

	DeltaCare Prepaid (DHMO)
Deductible	None
Annual Maximum	None
Provider	Member must use participating provider
Preventive & Diagnostic Care	You pay fixed copayments according to the plan's schedule of benefits
Basic Restorative Care	You pay fixed copayments according to the plan's schedule of benefits- Specialist referral is required under this plan.
Major Restorative Care	You pay fixed copayments according to the plan's schedule of benefits- Specialist referral is required under this plan.
Orthodontia	You pay fixed copayments according to the plan's schedule of benefits

Monthly Dental Retiree Rates

	DPPO High	DPPO Low
Retiree/Surviving Spouse Only	\$36.52	\$24.59
Retiree + Spouse	\$74.86	\$46.72
Retiree/Surviving Spouse + Child(ren)	\$96.78	\$54.10
Retiree + Family	\$122.33	\$76.25
DHMO		
Retiree/Surviving Spouse Only	\$13.54	
Employee + Spouse	\$23.31	
Retiree/Surviving Spouse + Child(ren)	\$27.10	
Employee + Family	\$41.33	

WELLNESS PROGRAM



Classes

- Fit Camp
- Full Body Fitness
- Yoga
- Zumba



Workshops

- UHC Diabetes Discussion Groups with Nurse Amy
- Financial Wellness Workshop
- TIAA – Managing Income and Debt



Seminars/Webinars

- Natural Grocers- “Make Your Next Plate Great”
- Airrosti – Lunch & Learns – Tech Neck
- Right Step – Opioids in the Workplace
- THR Seminars with Physicians



Special Challenges & Events

- Blood Drives
- Health, Safety & Benefits (HSBF)
- Walk Across Texas (WAT)
- Heart Walk

<http://roundup.fortworthtexas.gov/wellness/>

OTHER BENEFITS

Ticket Discounts, Travel Deals
and more...

Beneplace

Discount Site:
Tickets
Car rental
Vacation
Big Ticket Items

The screenshot shows the Beneplace website interface for Fort Worth Extras. At the top left is the Fort Worth logo. Below it is a navigation menu with categories: Home, Automotive, Dining & Grocery, Education, Electronics, Entertainment, Family, Financial Wellness, Flowers & Gifts, Health & Wellness, Home & Garden, Home Office, Insurance, Local Discounts, and Moving Services. The main content area features a large banner for concert tickets with a "\$30 OFF" discount and "PREMIUM SEATS USA" branding. Below the banner are several promotional tiles: "EMPLOYEE AUTO BUYING PROGRAM" with a car image, "20% off Furniture, Mattresses & more" from 20HOMESALET5, and "CUT CREDIT CARD INTEREST" with a "FIND MY RATE" button. On the right side, there is a "Features" section with tiles for "ENDLESS VACATION RENTALS", "UP TO 55% TRAVEL SAVINGS", "JOIN THE CLUB!", "Save Up To 30% off Suburban Propane", "SAVE UP TO 40%", and "\$40 OFF FOOTBALL TICKETS!". A "Top 5" list includes Apple, Forzleri, Samsung, AT&T, and Dell. A "Recently Added" list includes Mouth.com, Forzleri, Only Natural Pet, Provident Funding, Spoonful of Comfort, SunJaak.com, and USC Online MBA. A "Monthly Communication" section encourages users to check out special offers in the Employee Discount Newsletter.

HELP/COMMUNICATIONS

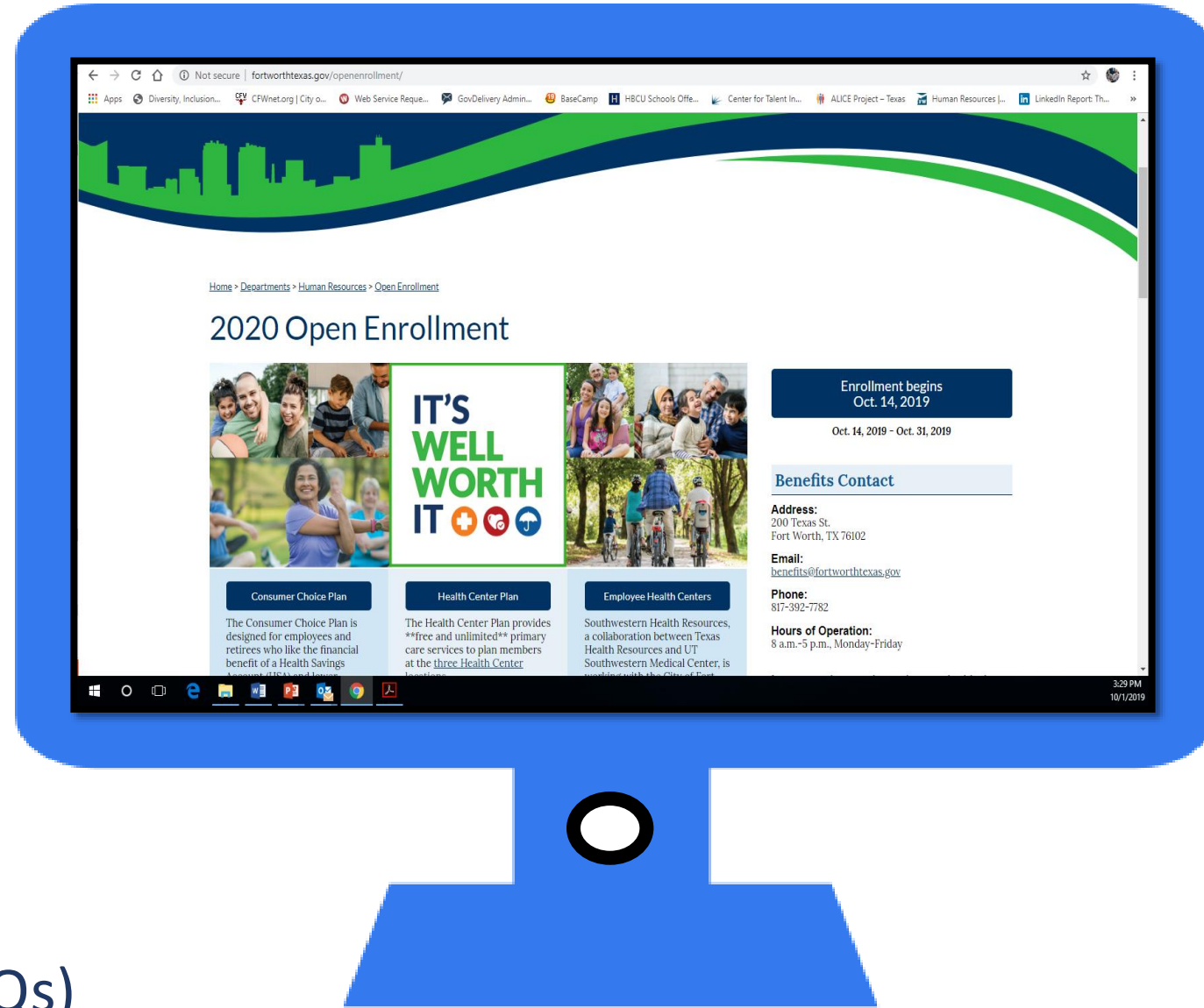
WHERE TO FIND MORE INFORMATION

Go online to the Open Enrollment page

FORTWORTHTEXAS.GOV/OPENENROLLMENT

On the city's webpage you can learn more about:

- ✓ Plan Comparisons
- ✓ Plan Design
- ✓ Open Enrollment Meeting Dates
- ✓ Healthcare Vendors
- ✓ Frequently Asked Questions (FAQs)



HOW TO ENROLL ONLINE
ALL EMPLOYEES MUST USE OUR NEW
ONLINE ENROLLMENT TOOL
CFWBENEFITS.COM



New Online Enrollment Platform cfwbenefits.com

Easier to use! More Streamlined!
There's even an app!

ENVIRONMENT: CHIEF

Learn More About Fort Worth... on behalf of Test Active

Welcome Test Active

OPEN ENROLLMENT EVENT

You must complete your enrollment by 11/18/2016.

Completing this event allows you to review your information, your dependent information (if applicable) and review or make benefit elections.

CONTINUE

CANCEL AND CONTINUE TO MY DASHBOARD >>

FORT WORTH.

Welcome to Your City of Fort Worth Health and Benefits Portal

This easy-to-use application places the power to manage your benefits at your fingertips. Here you'll find detailed information and helpful guidance regarding all of the benefits available to you. Browse your coverage options, select the plan that's right for you and your family, and enroll in your benefits with just a few clicks. Come back to review your selections and update your information at any time.

This portal is available 24/7, providing convenient access to your personal information, election history, beneficiary designations, and more.

Already registered? Enter your User ID and Password below to login.

First time visiting? If you do not have a User ID or Password, please click Register to create one.

User ID

Did you forget your User ID?

Password

Did you forget your Password?

LOG IN

REGISTER



Online Enrollment

- ✓ Enroll from any desktop or laptop:

cfwbenefits.com

- ✓ Upload proof documents online – birth certificates, marriage license, etc.

- ✓ Online enrollment help available:

- Kiosk in HR Benefits Office: Monday -Friday
8:00 AM – 5:00 PM

City of Fort Worth HR Benefits Office

200 Texas Street, Fort Worth, TX 76102

City Hall, Lower Level

817-392-7782 phone

817-392-2624 fax

benefits@fortworthtexas.gov

QUESTIONS

