

City of Fort Worth MEDICARE RETIREES OPEN ENROLLMENT PLAN YEAR 2023

Presented By
Human Resources Department

The graphic features a blue and green wavy header with the Fort Worth logo. Below it is a circular logo with a city skyline and the text 'GET COVERED STAY COVERED' and a large letter 'J'. The background shows a man and a woman embracing. A QR code is present with instructions to scan it with a phone's camera. Text at the bottom describes the Accolade support team and provides contact information. The open enrollment dates are highlighted in green.

FORT WORTH®

GET COVERED
STAY COVERED
J

Log on to the
NEW cfwbenefits.com
to Get Covered and
Stay Covered.

Scan QR code with
your phone's camera
to log in.

When you need answers to your simplest to most critical questions around benefits and coverage for you and your family, Accolade, our New Health and Benefits Support Team, can help you every step of the way. Quickly reach out to them by calling 833-909-2353 to get questions answered about Open Enrollment. Then starting in 2021 get the responses you need around the topics that matter most, like finding a doctor or understanding your medical bills.

Open Enrollment is
**OCT. 19th -
NOV. 6th**

Accolade | For questions call 833-909-2353 or
visit: <https://member.accolade.com>

If you are making no changes for
2023, you do not have to do
anything.

Your coverage will automatically
carry over to 2023.

Changes for 2022

Medicare

- You don't have to do anything
- Premium reductions!

Dental/Vision

- No plan changes
- Premiums will remain the same



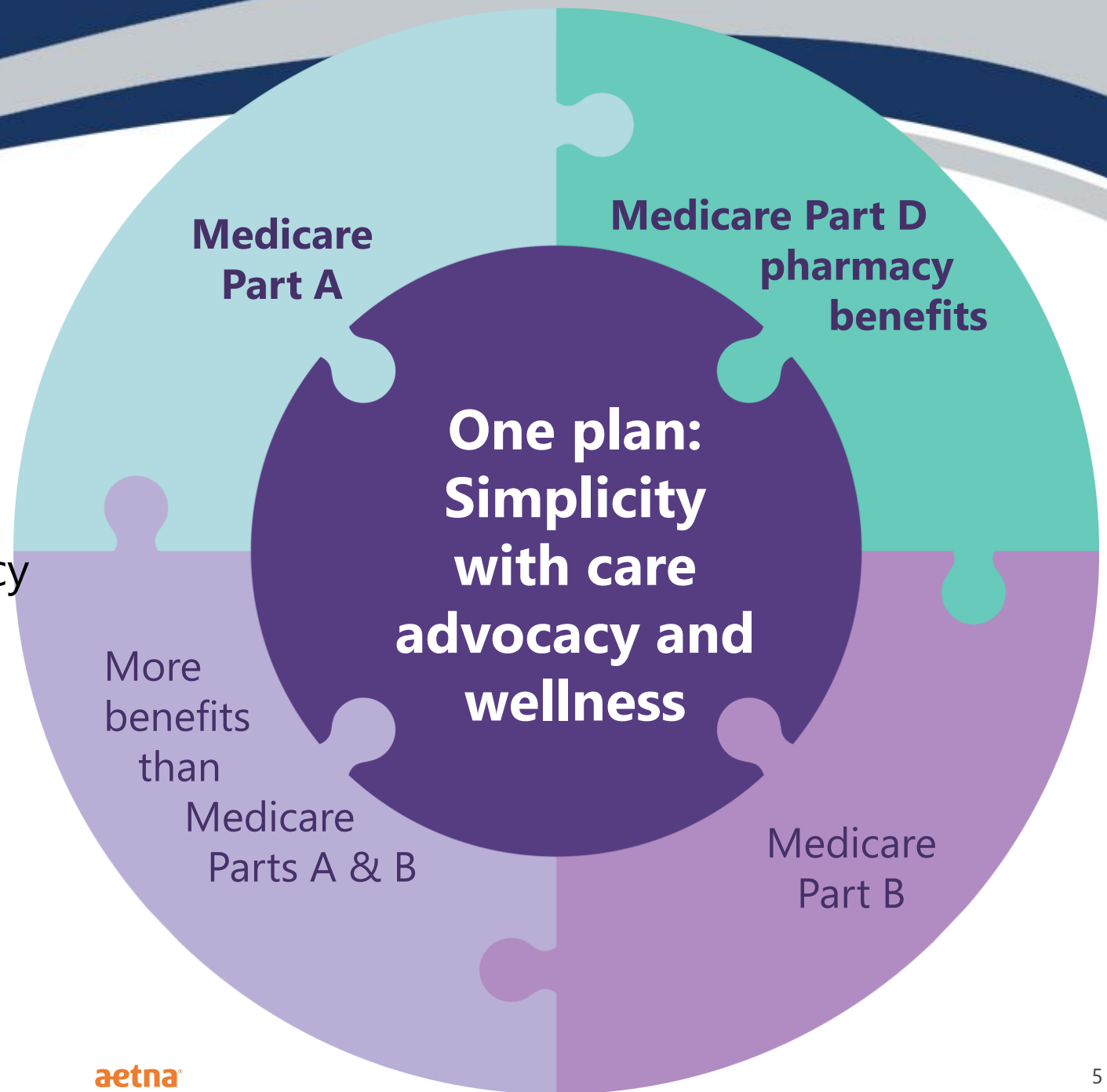
Aetna Medicare Advantage informational meeting
The City of Fort Worth

aetna[®]

How your Medicare Advantage plan works

- One step for you
- One ID card for medical and pharmacy
- A monthly Explanation of Benefits each for medical and pharmacy

Medicare Advantage plans will cover all Medicare-approved services



Simplicity

Medicare Advantage ID card

Medicare Advantage is an all-in-one plan

- Easy to use
- One ID card for medical and pharmacy needs
- More benefits than Original Medicare Parts A and B
- Care advocacy programs and wellness benefits to improve overall health
- Single monthly EOB for medical services and single monthly EOB for pharmacy services

How we make it simple to
see your doctors



**You're
covered**
in or out of
network

Aetna Medicare Advantage Preferred Provider Organization with an Extended Service Area (PPO ESA)

Access to providers nationwide

Your doctor does not have to be in our network

Same benefits in or out of network

No referrals needed

Covers you nationally when traveling

Will my doctors accept this plan?

Yes, they can, if they are:

Eligible to receive
Medicare payment

Willing to accept your Aetna
Medicare Advantage plan

**Many doctors do. Your copays or cost-share
amounts are the same both in and out of
network.**



Will my doctors accept this plan?

**It's easy to find out if your doctor accepts the
Aetna Medicare Advantage PPO Extended Service Area (ESA) plan**



Call

**1-888-267-2637 (TTY: 711),
Monday – Friday,
8 a.m. to 6 p.m. all time zones**



Click

**aetnamedicare.com
Can't find your doctor online?
Call us.
It's likely they may still accept
the plan.**

**Medical benefits
designed for
The City of Fort Worth**

Your medical benefits

	Medicare Advantage plan
Deductible	\$0
Out-of-pocket maximum	\$1000
Preventive care	\$0
Primary care office visit	5%
Specialty care office visit	5%
Inpatient hospital	\$250 per stay
Outpatient surgery	5%
Emergency room (worldwide coverage)	\$50 waived if admitted

**Prescription drug benefits
designed for
City of Fort Worth**

Aetna's Prescription Drug Plan offers you:



65,000 pharmacies- with 24,000 preferred pharmacies nationwide *



Aetna Rx Home Delivery[®]



Easy-to-use online tools

*The number of pharmacies listed is approximate and is subject to change, due to CMS' "any willing provider" requirement as well as ongoing contracting efforts. Data is current as of 7/1/18 and is subject to change.



Your prescription drug benefits

	Aetna Part D plan
Deductible	\$100
Tier 1 Generics	\$10
Tier 2 Preferred Brand	\$30
Tier 3 Non-preferred Brand	\$50
Tier 4 Specialty	20% but not more than \$200
Coverage gap	Full gap coverage
Need help looking up a covered drug	Call us 1-888-267-2637

What is a Healthy Home Visit?

A health care professional comes to your home.



Well-being
assessment



Review medications



Total health
screening



Home safety check

We can share results with your doctor.

We can provide referrals into support programs.

**We can help you try to
reach your health goals –
whatever they are**

**97.7% overall satisfaction
with Aetna Medicare Advantage plan coverage
and benefits***

*2018 Aetna Medicare Advantage group plan member satisfaction survey



**Important
information!**



Aetna

**1-888-267-2637 (TTY: 711), 8 a.m. to 6
p.m. all time zones, Monday through
Friday**



aetnamedicare.com

**Need help with looking up covered drugs or questions call us at
1-888-267-2637, 8 a.m. to 4:30 p.m. CT,
Monday through Friday by
October 26, 2018**



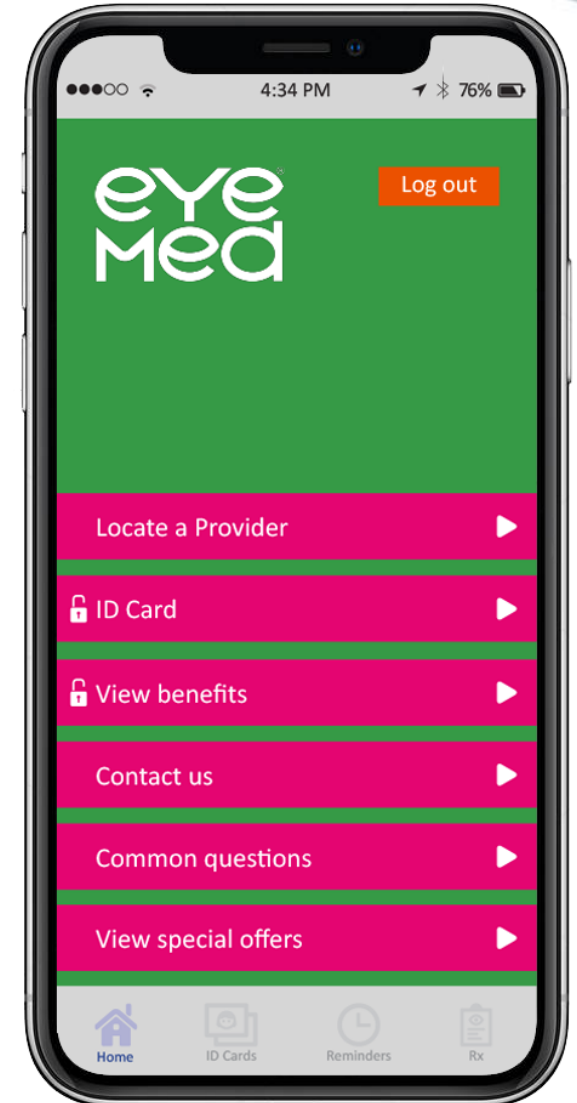
**Enjoy your Aetna
Medicare Advantage
plan**

VISION PLAN!

EYEMED

Vision Plan Highlights

- **Exam \$10 copay**
- **Frames \$130 frame allowance + 20% discount over \$130 every 24 months**
- **Lenses – \$20 copay for single, bifocal, trifocal and lenticular**
 - Various copays for progressive tiers
 - Various copays for reflective coating
 - Every 12 months
- **Contacts \$125 allowance + 15% discount over \$125**
 - Every 12 months
- **Rates range from \$6.00 per check for individual to \$16.00 per check for family**



DENTAL PLANS

Provider Delta Dental

DPPO Plan Similarities



- ✓ You can use any Dentist in the US
- ✓ \$50 deductible per person
- ✓ No referrals needed for specialty care
- ✓ Balance bill exposure for services by out of network providers



Delta Dental Benefits – DPPO

	Dental PPO (DPPO)	
	DDPO - Low Option*	DPPO - High Option
Deductible	\$50 per person/ \$150 per family	\$50 per person/\$150 per family
Annual Maximum	\$1,000 per person	\$2,000 per person
Provider	Unlimited - PPO Network available	Unlimited - PPO Network available
Preventive & Diagnostic Care	Plan pays 100% with no deductible	Plan pays 100% with no deductible
Basic Restorative Care	Plan pays 50%	Plan pays 80%
Major Restorative Care	Plan pays 50%	Plan pays 50%
Orthodontia	Plan pays 50%	Plan pays 50%

*You may be balance billed for going to a non-Delta Dental PPO network dentist. You will be billed the difference between the PPO fee and the Delta Dental Premier dentist fee or the Out-of-Network dentist fee.

DHMO PLAN

- ✓ No deductibles or calendar-year maximums
- ✓ Must use contracted Dentists & choose a PCD
- ✓ Pediatric dentist for children up to age 8
- ✓ Orthodontic coverage is included for adults & children



Delta Dental Benefits - DHMO

	DeltaCare Prepaid (DHMO)
Deductible	None
Annual Maximum	None
Provider	Member must use participating provider
Preventive & Diagnostic Care	You pay fixed copayments according to the plan's schedule of benefits
Basic Restorative Care	You pay fixed copayments according to the plan's schedule of benefits- Specialist referral is required under this plan.
Major Restorative Care	You pay fixed copayments according to the plan's schedule of benefits- Specialist referral is required under this plan.
Orthodontia	You pay fixed copayments according to the plan's schedule of benefits

WELLNESS PROGRAM



Classes

- Fit Camp
- Full Body Fitness
- Yoga
- Zumba



Workshops

- UHC Diabetes Discussion Groups with Nurse Amy
- Financial Wellness Workshop
- TIAA – Managing Income and Debt



Seminars/Webinars

- Natural Grocers- “Make Your Next Plate Great”
- Airrosti – Lunch & Learns – Tech Neck
- Right Step – Opioids in the Workplace
- THR Seminars with Physicians



Special Challenges & Events

- Blood Drives
- Health, Safety & Benefits (HSBF)
- Walk Across Texas (WAT)
- Heart Walk

<http://roundup.fortworthtexas.gov/wellness/>

OTHER BENEFITS

Ticket Discounts, Travel Deals
and more...

Beneplace

Discount Site:
Tickets
Car rental
Vacation
Big Ticket Items

The screenshot shows the Beneplace website interface for Fort Worth Extras. At the top left is the Fort Worth logo. Below it is a teal banner with the text "Welcome to City of Fort Worth Extras!". The main content area is divided into several sections:

- Limited-Time Offers:** A box with the text "Gain access to secret sales and limited-time offers!" and a "Sign Up Here >>" link.
- Site Search:** A search bar with a "go" button and a "Select a vendor" dropdown menu.
- Home:** A vertical list of categories including Automotive, Dining & Grocery, Education, Electronics, Entertainment, Family, Financial Wellness, Flowers & Gifts, Health & Wellness, Home & Garden, Home Office, Insurance, Local Discounts, and Moving Services.
- Featured Offer:** A large banner for "CONCERT TICKETS" with "\$30 OFF" and "PREMIUM SEATS USA". It features an image of four performers and a "SHOP NOW" button.
- Employee Auto Buying Program:** A box for "EMPLOYEE AUTO BUYING PROGRAM" with a "See Savings >" link and an image of a blue SUV.
- 20% off Furniture, Mattresses & more:** A box with "20% off Furniture, Mattresses & more" and "20HOMESALET5" (Offer valid thru 9/30).
- Top 5:** A list of items: Apple, Movie Tickets/Rentals, Samsung, AT&T, Dell.
- Recently Added:** A list of items: Mouth.com, Forzleri, Only Natural Pet, Provident Funding, Spoonful of Comfort, SunJaak.com, USC Online MBA.
- Monthly Communication:** A box with the text "Check out this month's special offers in the Employee Discount Newsletter." and a "This Month's Communication >>" link.
- Features:** A vertical list of promotional boxes:
 - ENDLESS VACATION RENTALS
 - UP TO 55% TRAVEL SAVINGS! JOIN THE CLUB!
 - Save Up To 30% off Suburban Propane
 - SAVE UP TO 40% (with image of people on a beach)
 - CUT CREDIT CARD INTEREST. FIND MY RATE
 - \$40 OFF FOOTBALL TICKETS! SHOP NOW

HELP/COMMUNICATIONS

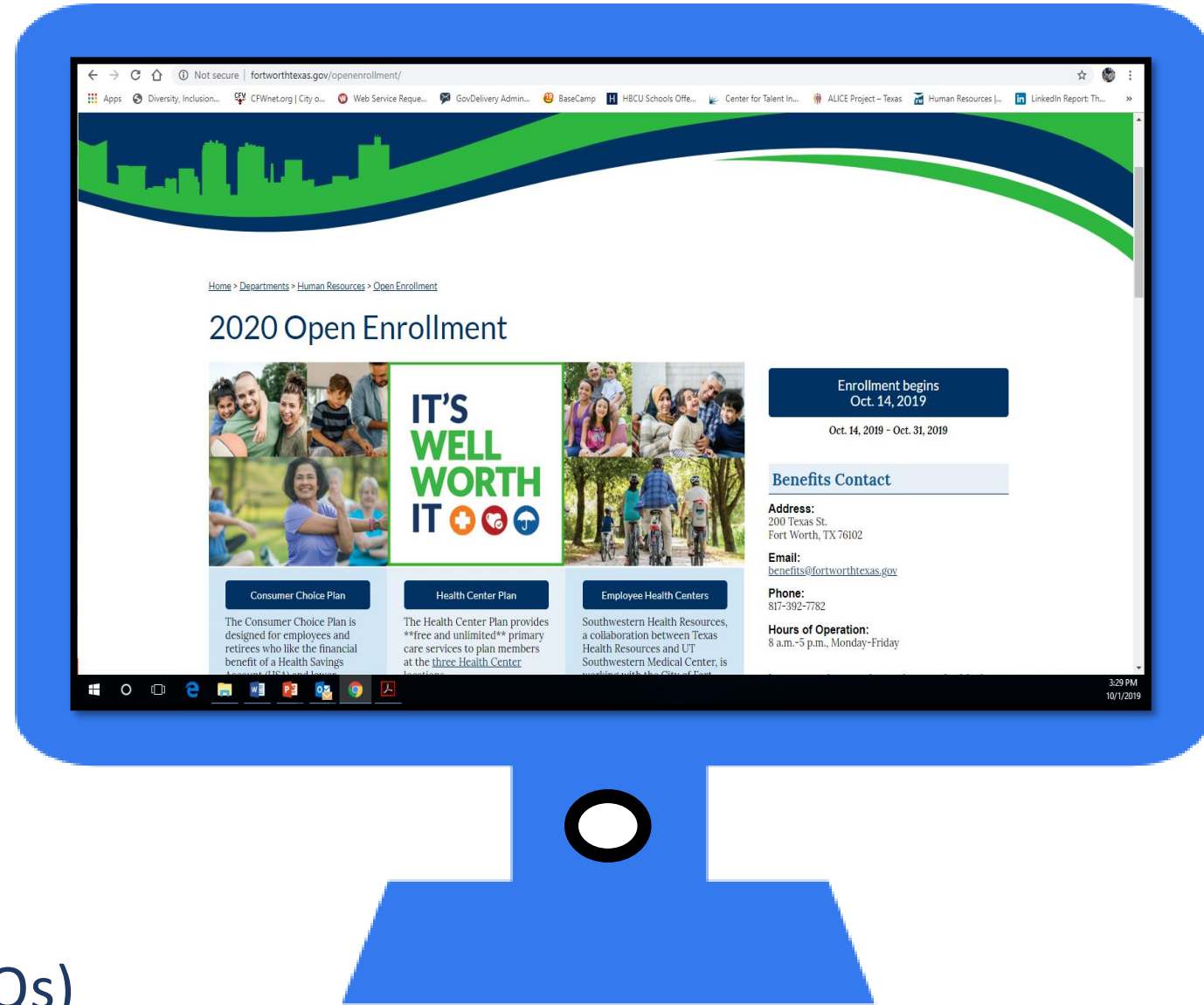
WHERE TO FIND MORE INFORMATION

Go online to the Open Enrollment page

<https://www.fortworthtexas.gov/departments/hr/employees/openenrollment>

On the city's webpage you can learn more about:

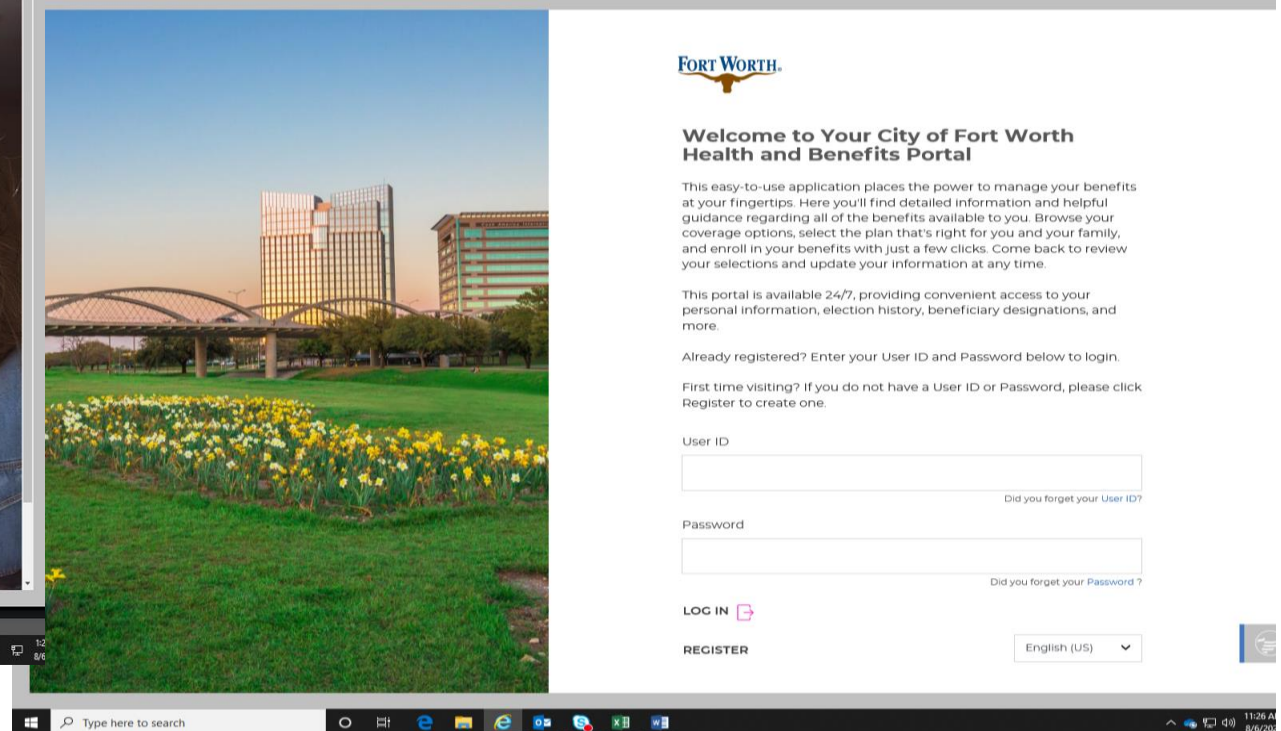
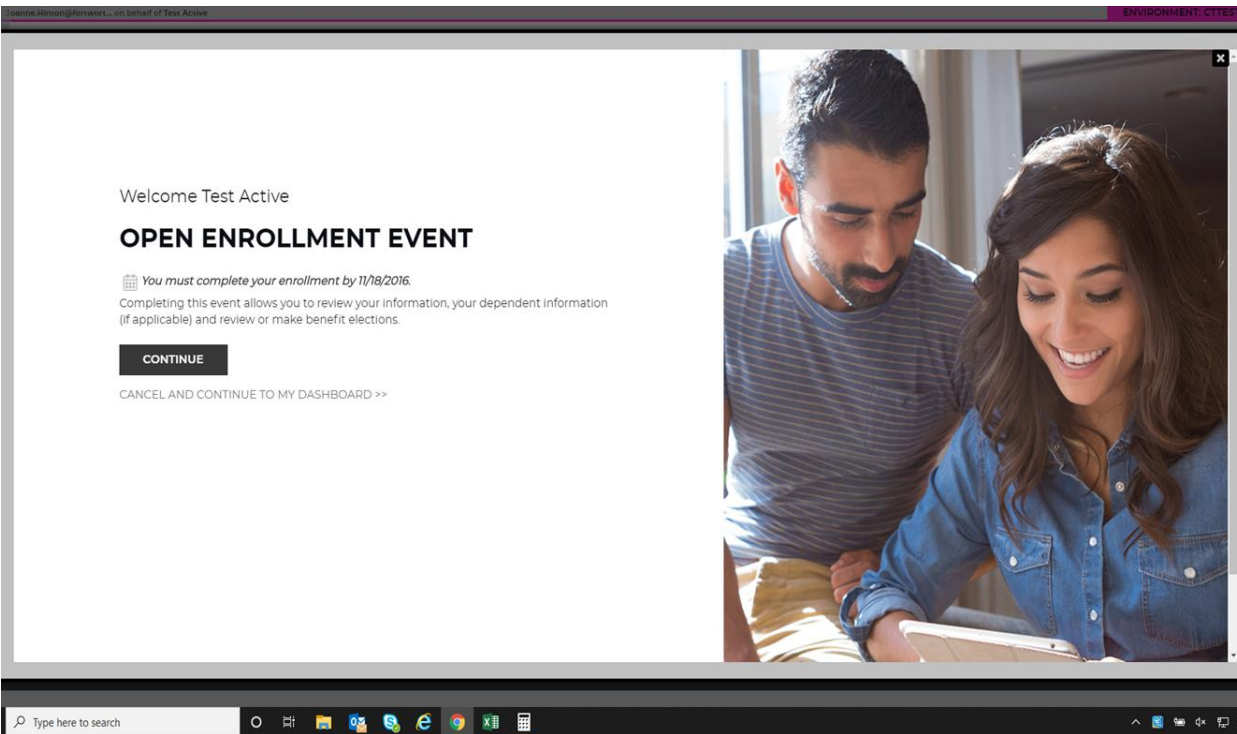
- ✓ Plan Comparisons
- ✓ Plan Design
- ✓ Open Enrollment Meeting Dates
- ✓ Healthcare Vendors
- ✓ Frequently Asked Questions (FAQs)

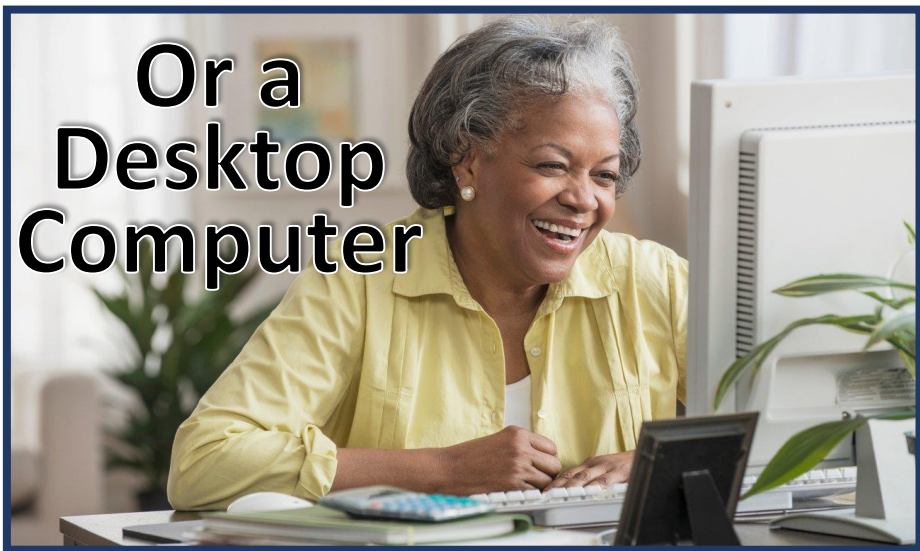


HOW TO ENROLL ONLINE

New Online Enrollment Platform cfwbenefits.com

Easier to use! More Streamlined!
There's even an app!





Online Enrollment

- ✓ Enroll from any desktop or laptop:

cfwbenefits.com

- ✓ Upload proof documents online – birth certificates, marriage license, etc.

- ✓ Online enrollment help available:

- Kiosk in HR Benefits Office: Monday -Friday
8:00 AM – 5:00 PM

City of Fort Worth HR Benefits Office

200 Texas Street, Fort Worth, TX 76102

City Hall, Lower Level

817-392-7782 phone

817-392-2624 fax

benefits@fortworthtexas.gov

QUESTIONS

