



# **APPENDIX E**

## **20-YEAR PLANNED SERVICE AREAS**

The maps in this appendix depict the Planned Service Areas (PSAs), which are locations in the extraterritorial jurisdiction (ETJ) that the City of Fort Worth expects to be able to serve within the next 20-25 years with appropriate municipal services and infrastructure. The City delineates Planned Service Areas in the ETJ to help guide planning and decision-making on capital improvement projects, future land use allocations, municipal services forecasting, and annexation requests. Inclusion of property in a Planned Service Area does not obligate the City to provide services to the property, nor does it prohibit the City from considering areas outside of PSAs for service provision.

Key factors used to determine Planned Service Areas include proximity to:

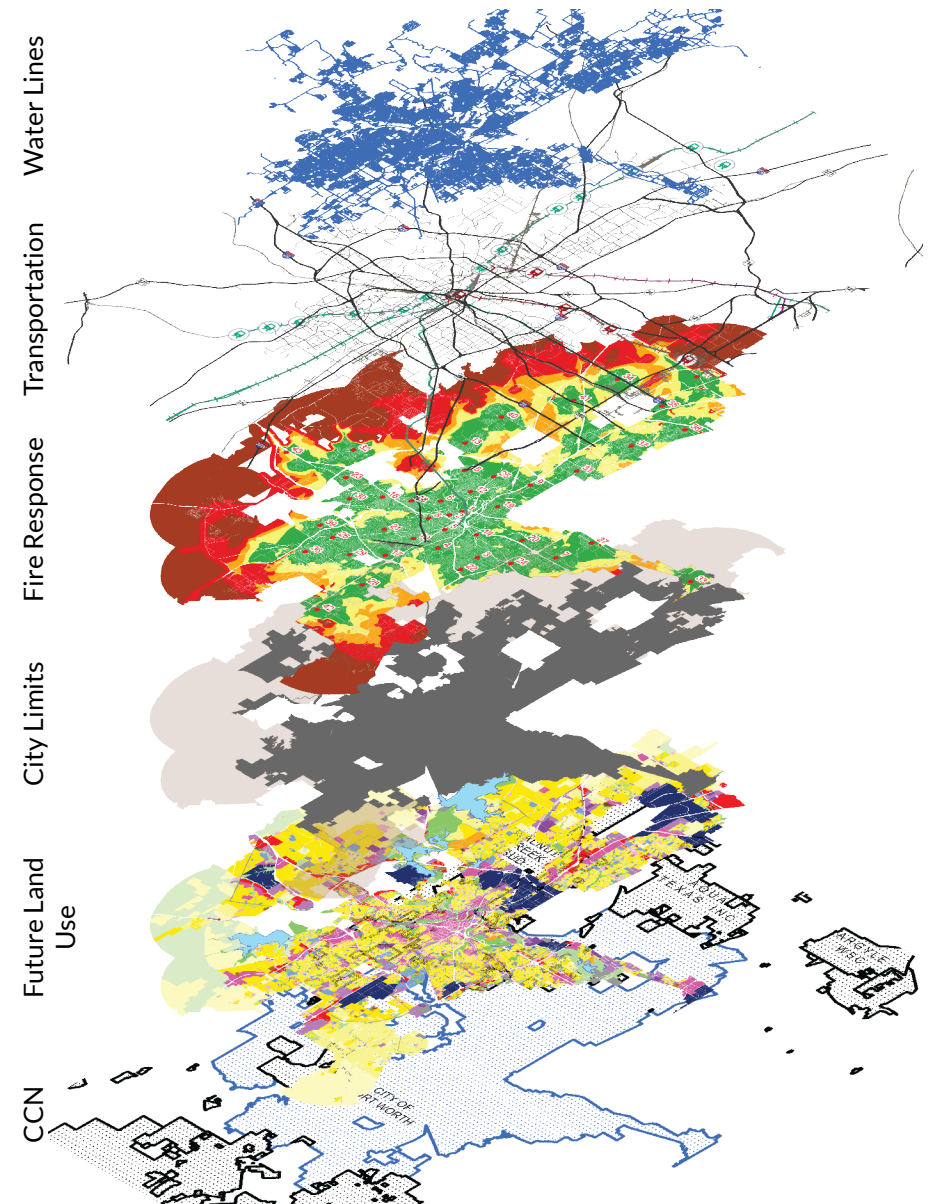
- City limits
- Water lines
- Highways, arterial thoroughfares, and railroads

Other factors considered in determining PSAs include the City's future land use plan, the location and extent of buildable land, fire station response times, and Certificates of Convenience and Necessity (CCNs, which define existing water and sewer service areas).



One million gallon elevated water storage tank in Parker County, constructed north of I-20 to serve development in far west Fort Worth.

## SELECTION FACTORS



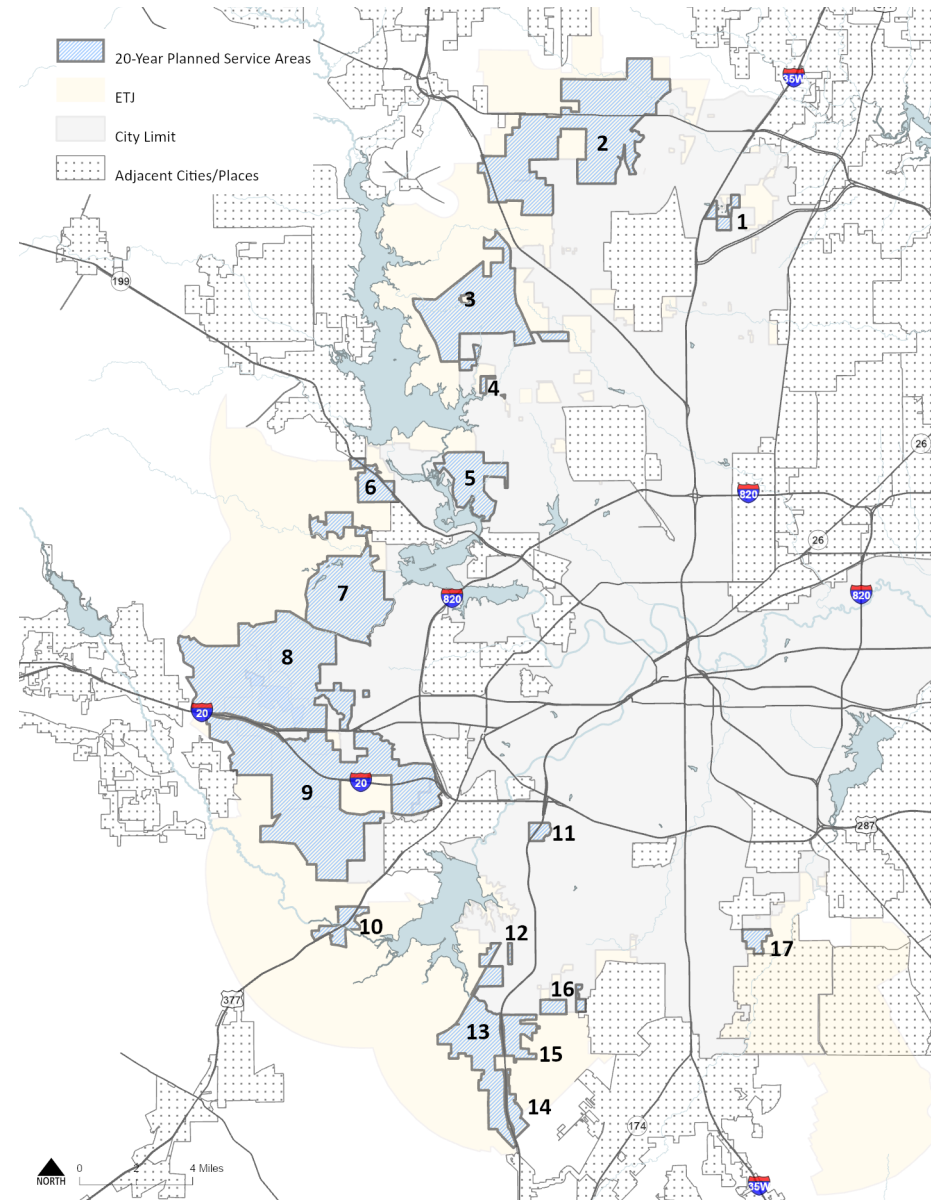
Source: City of Fort Worth Departments: Development Services, Fire & Emergency Services, IT Solutions, Planning & Data Analytics, Water, and the City Manager's Office, 2022.

Fort Worth has 17 Planned Service Areas, as shown on the map to the right. Planned Service Area maps are provided on the following pages in counter-clockwise order, starting with the Far North Area – East.

## Planned Service Areas

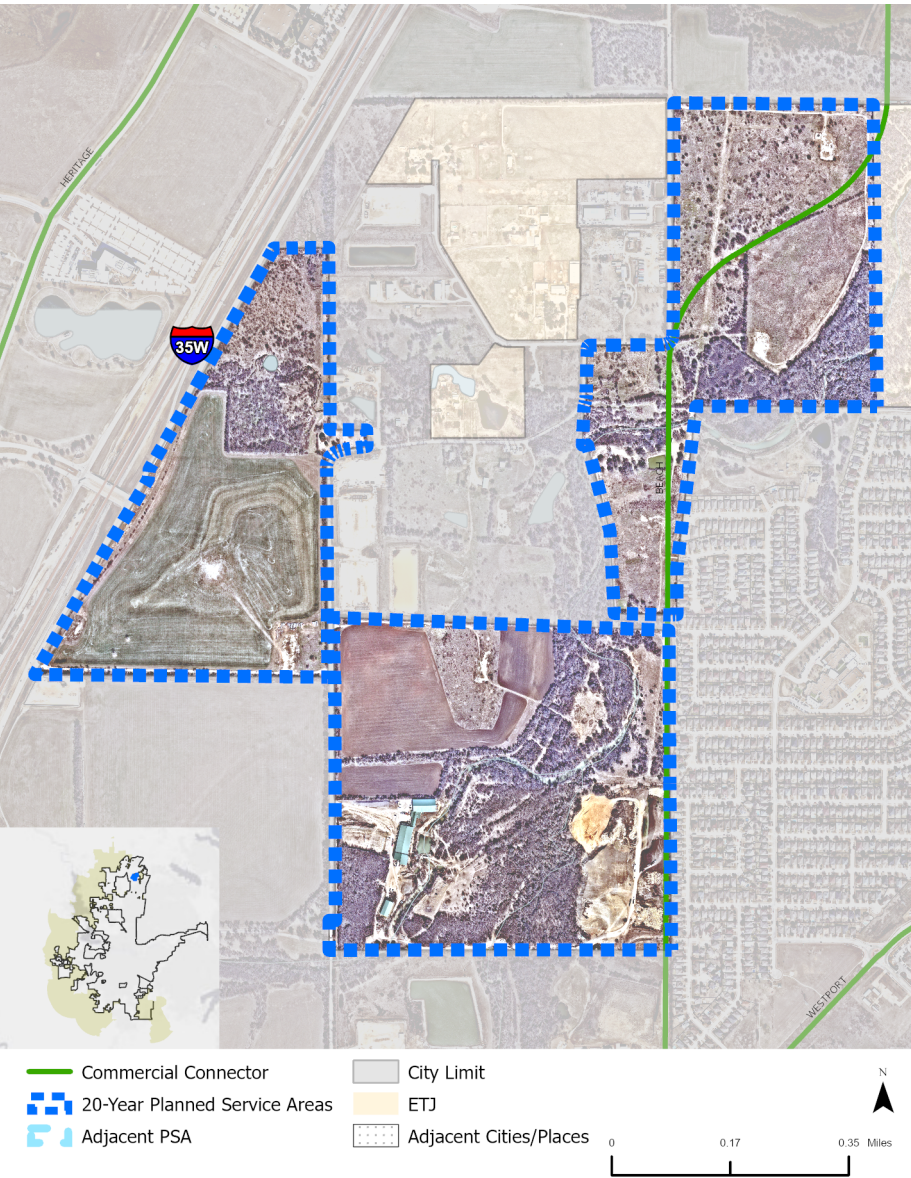
- [1\) Far North Area - East](#)
- [2\) Far North Area - West](#)
- [3\) Eagle Mountain/ Business 287 Area](#)
- [4\) Boat Club & Bailey Boswell Intersection](#)
- [5\) Ten Mile Bridge & Cromwell Marine Creek Area](#)
- [6\) Jacksboro Highway/Nine Mile Bridge Area](#)
- [7\) Live Oak/Silver Creek Area](#)
- [8\) Walsh Ranch North/FM 3325 Area](#)
- [9\) Walsh Ranch South & Veale Ranch Area](#)
- [10\) US 377 & FM 1187 Intersection](#)
- [11\) Oakmont/Chisholm Trail Parkway Area](#)
- [12\) Old Granbury Rd/FWWR/Tarleton North Area](#)
- [13\) Rock Creek Basin/Chisholm Trail Parkway West Area](#)
- [14\) Chisholm Trail Parkway East/South CR 920 Area](#)
- [15\) Chisholm Trail Parkway/East FM 1187/Cleburne Rd Area](#)
- [16\) Rosemary/Southfork/The Bridges Area](#)
- [17\) Everman Area - Southeast](#)

## 20-YEAR PLANNED SERVICE AREAS

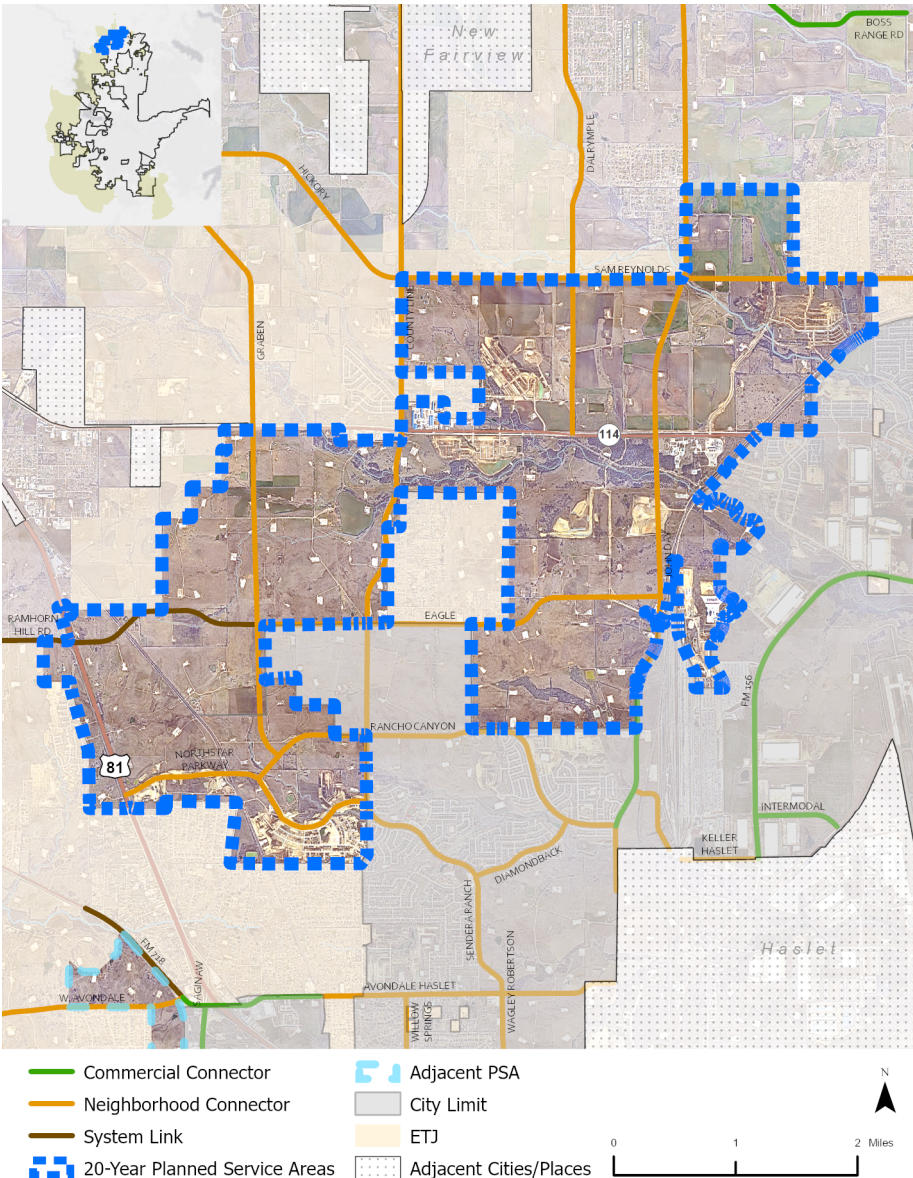


Source: City of Fort Worth Departments: Development Services, Fire & Emergency Services, IT Solutions, Planning & Data Analytics, Water, and the City Manager's Office, 2022.

1) FAR NORTH AREA - EAST

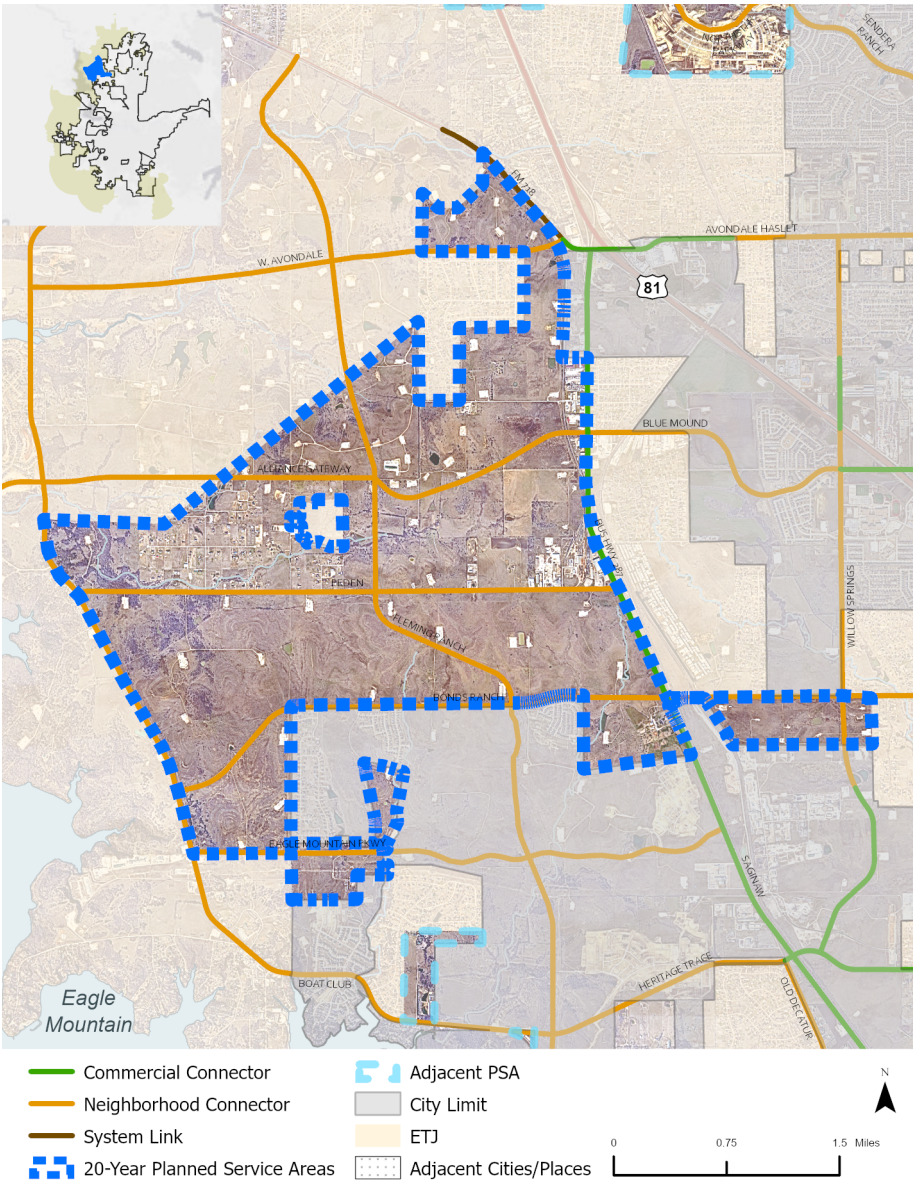


2) FAR NORTH AREA - WEST



Source: City of Fort Worth Departments: Development Services, Fire & Emergency Services, IT Solutions, Planning & Data Analytics, Water, and the City Manager's Office, 2022.

3) EAGLE MOUNTAIN/ BUSINESS 287 AREA

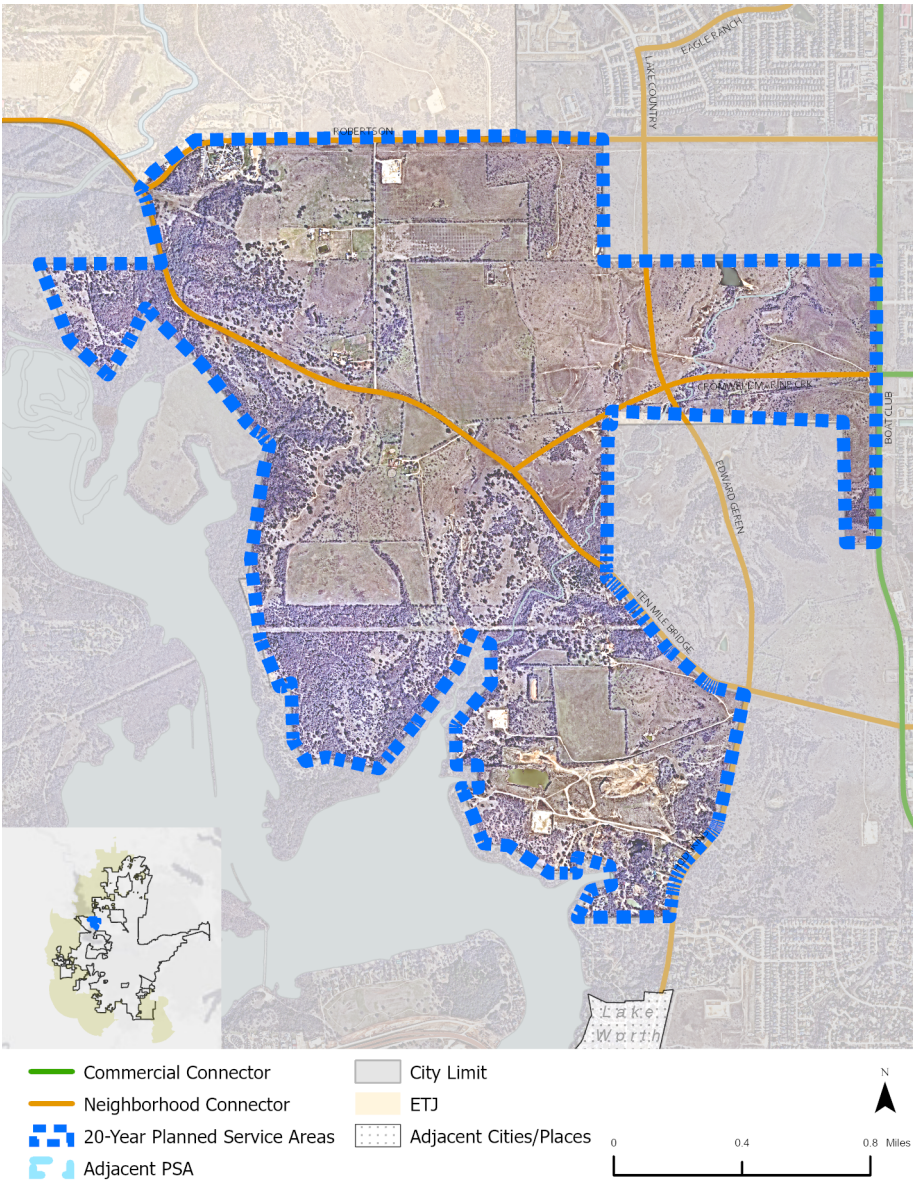


4) BOAT CLUB & BAILEY BOSWELL INTERSECTION

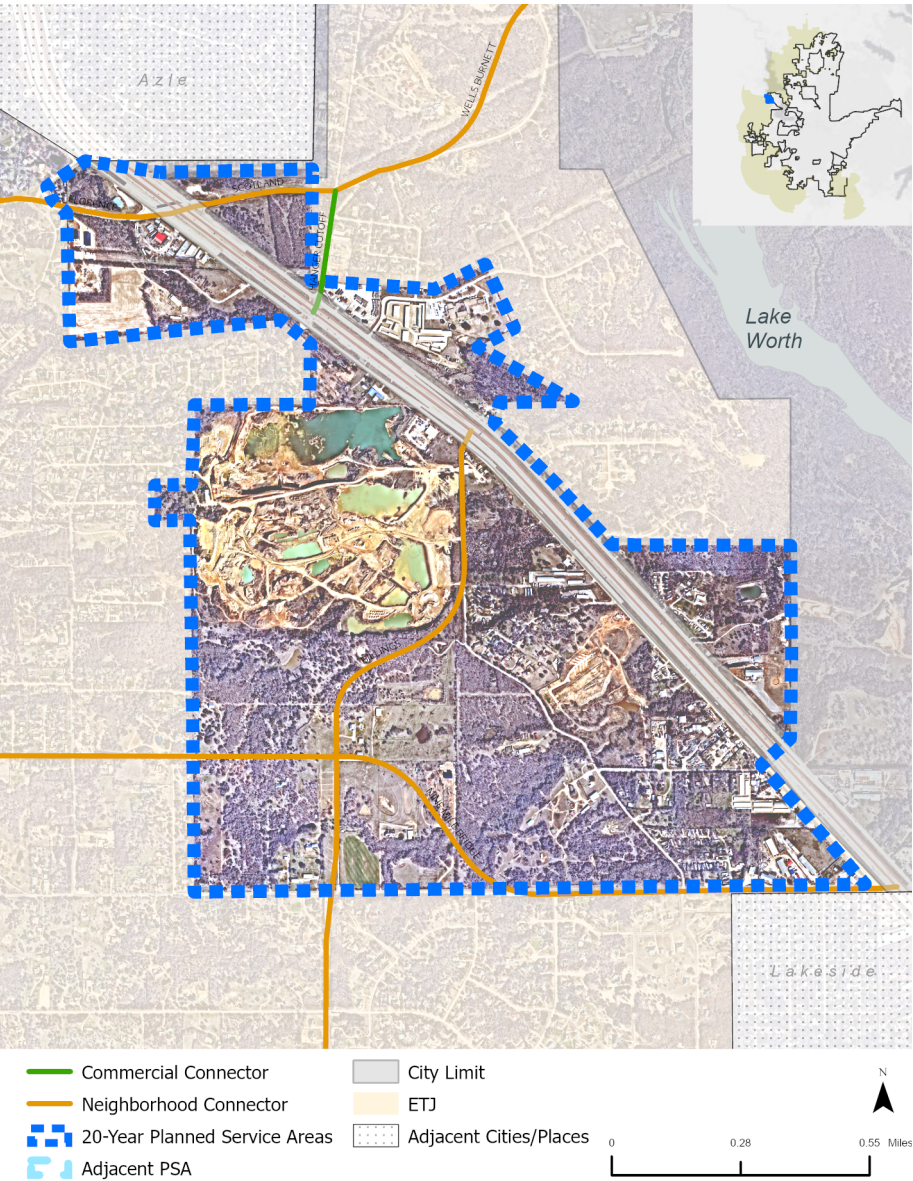


Source: City of Fort Worth Departments: Development Services, Fire & Emergency Services, IT Solutions, Planning & Data Analytics, Water, and the City Manager's Office, 2022.

5) TEN MILE BRIDGE & CROMWELL MARINE CREEK AREA

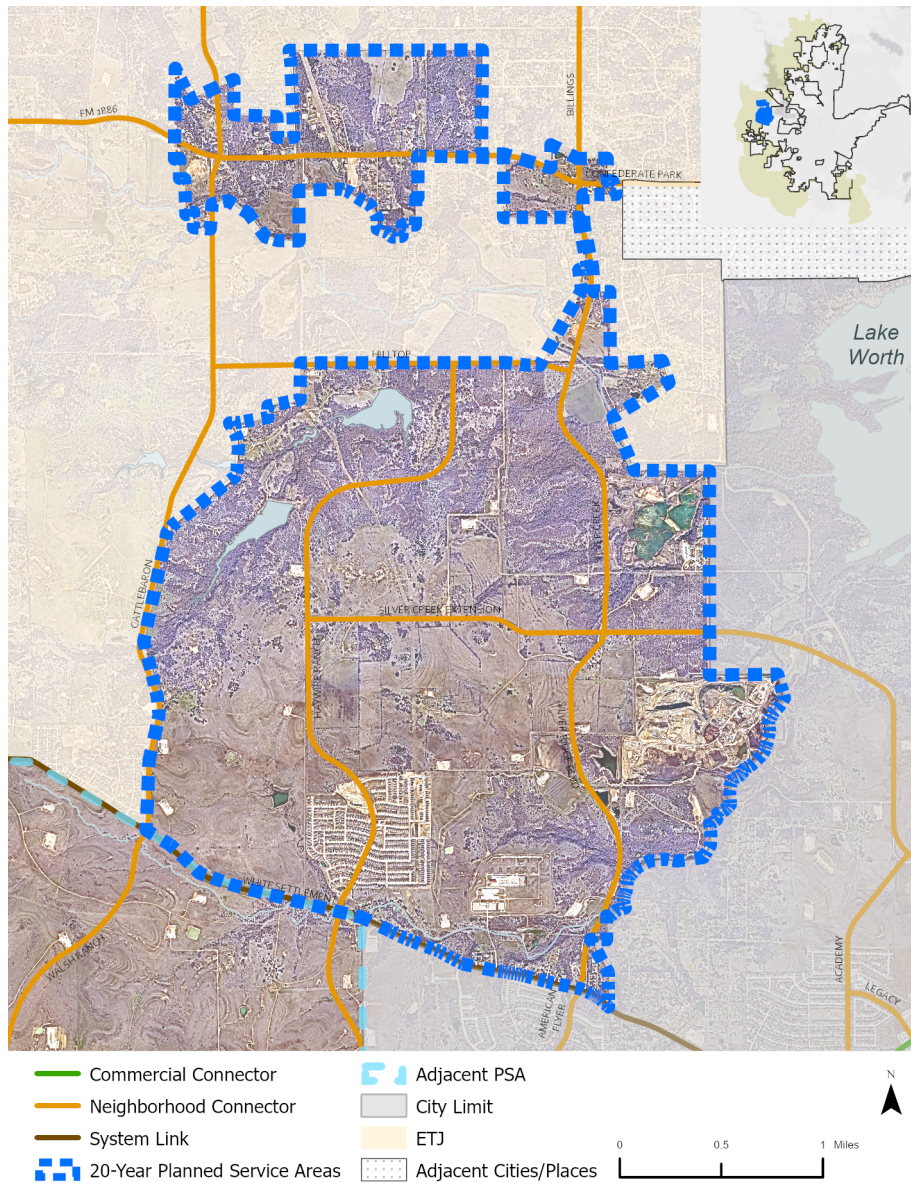


6) JACKSBORO HIGHWAY/NINE MILE BRIDGE AREA

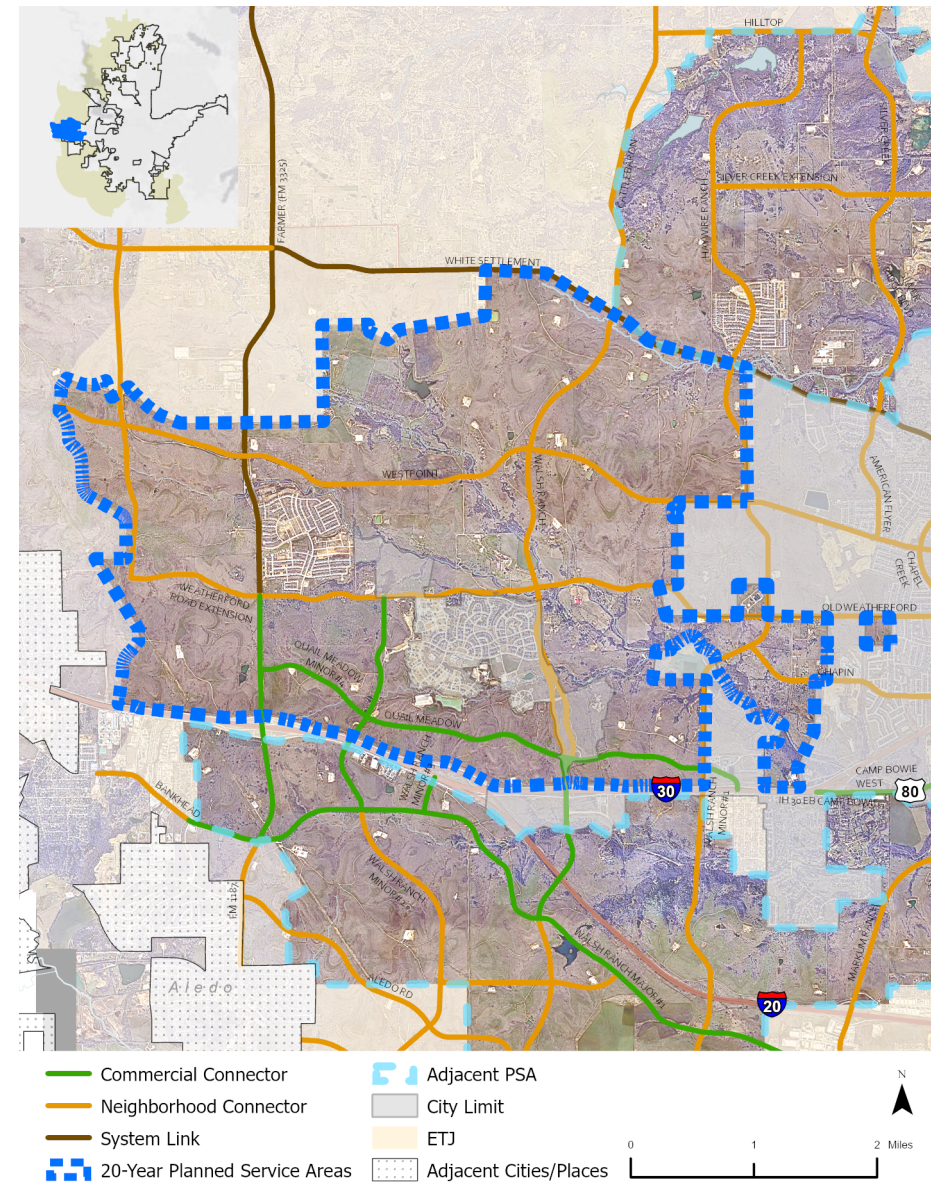


Source: City of Fort Worth Departments: Development Services, Fire & Emergency Services, IT Solutions, Planning & Data Analytics, Water, and the City Manager's Office, 2022.

## 7) LIVE OAK/SILVER CREEK AREA

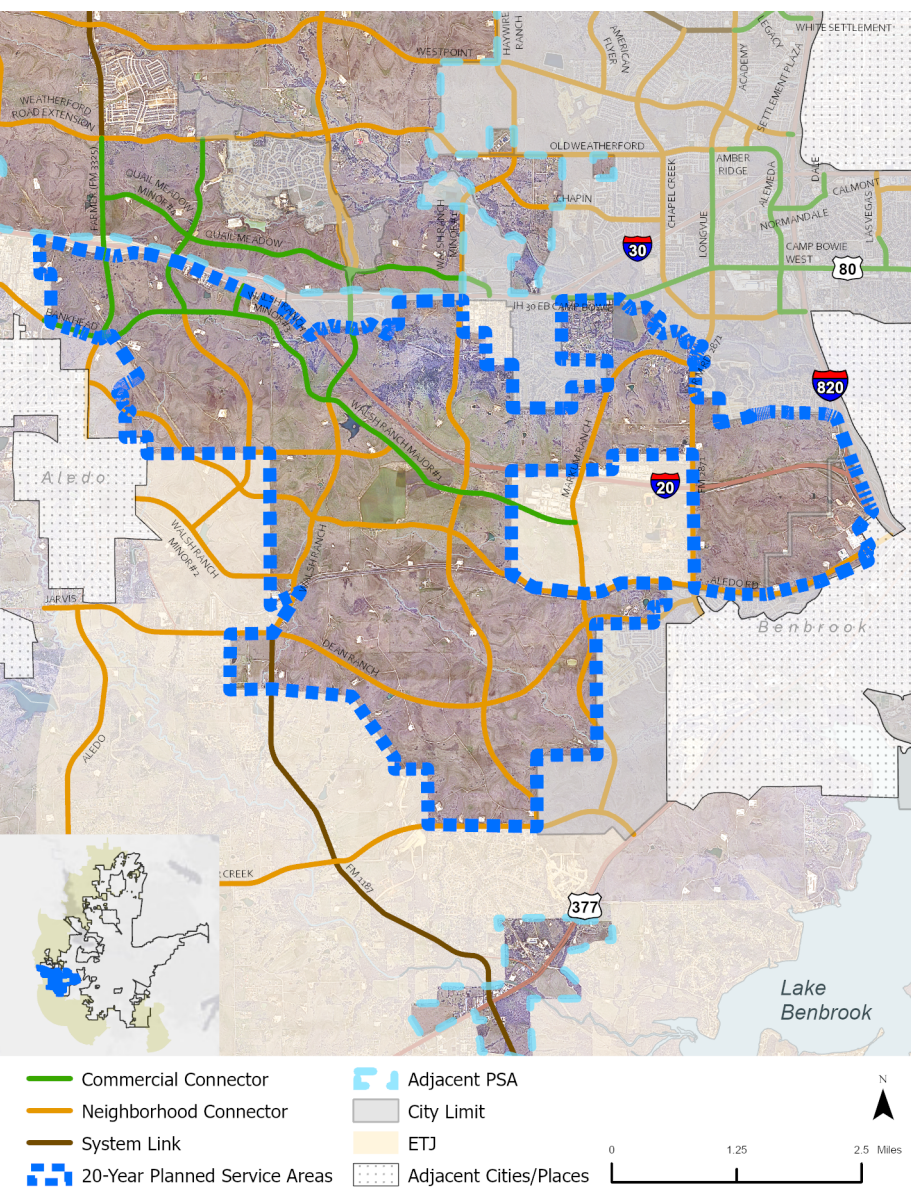


## 8) WALSH RANCH NORTH/FM 3325 AREA

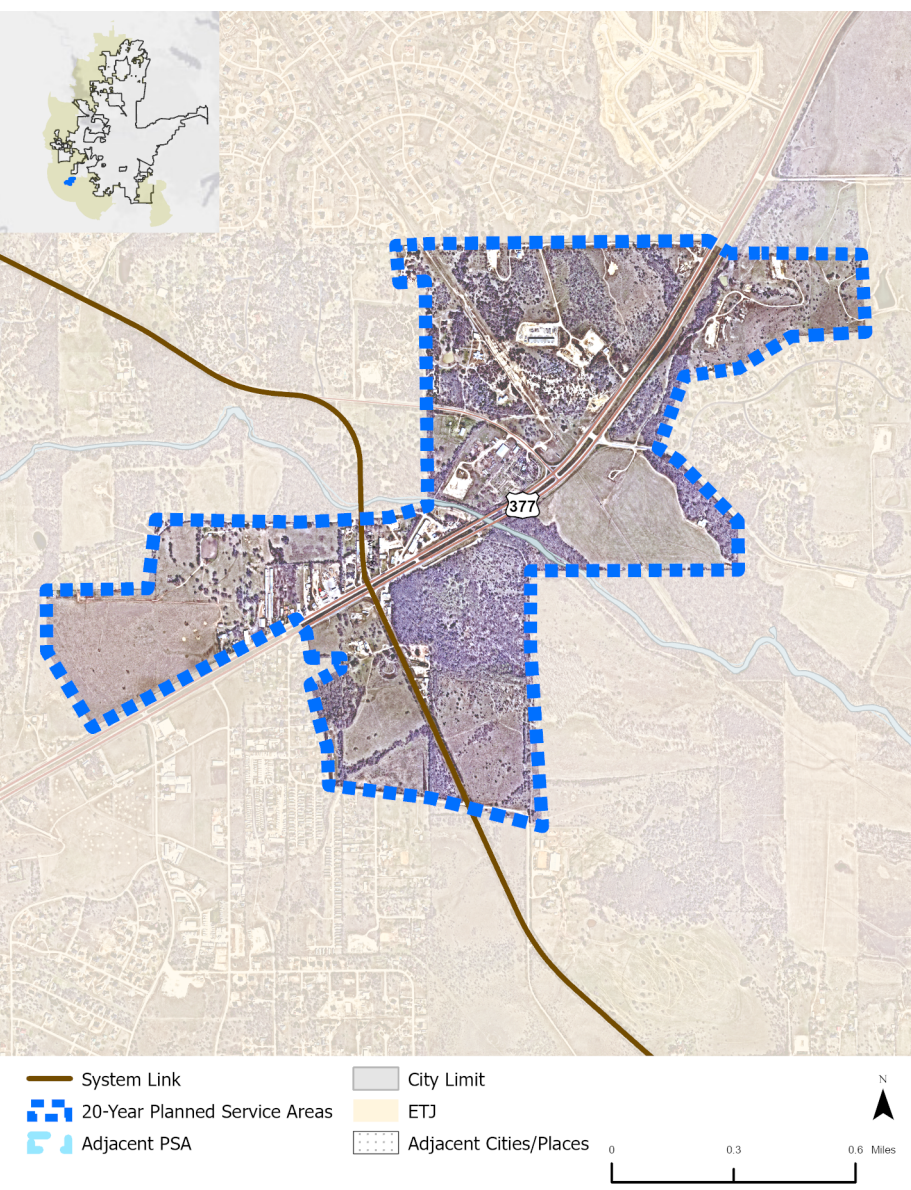


Source: City of Fort Worth Departments: Development Services, Fire & Emergency Services, IT Solutions, Planning & Data Analytics, Water, and the City Manager's Office, 2022.

9) WALSH RANCH SOUTH/VEALE RANCH AREA



10) US 377 & FM 1187 INTERSECTION

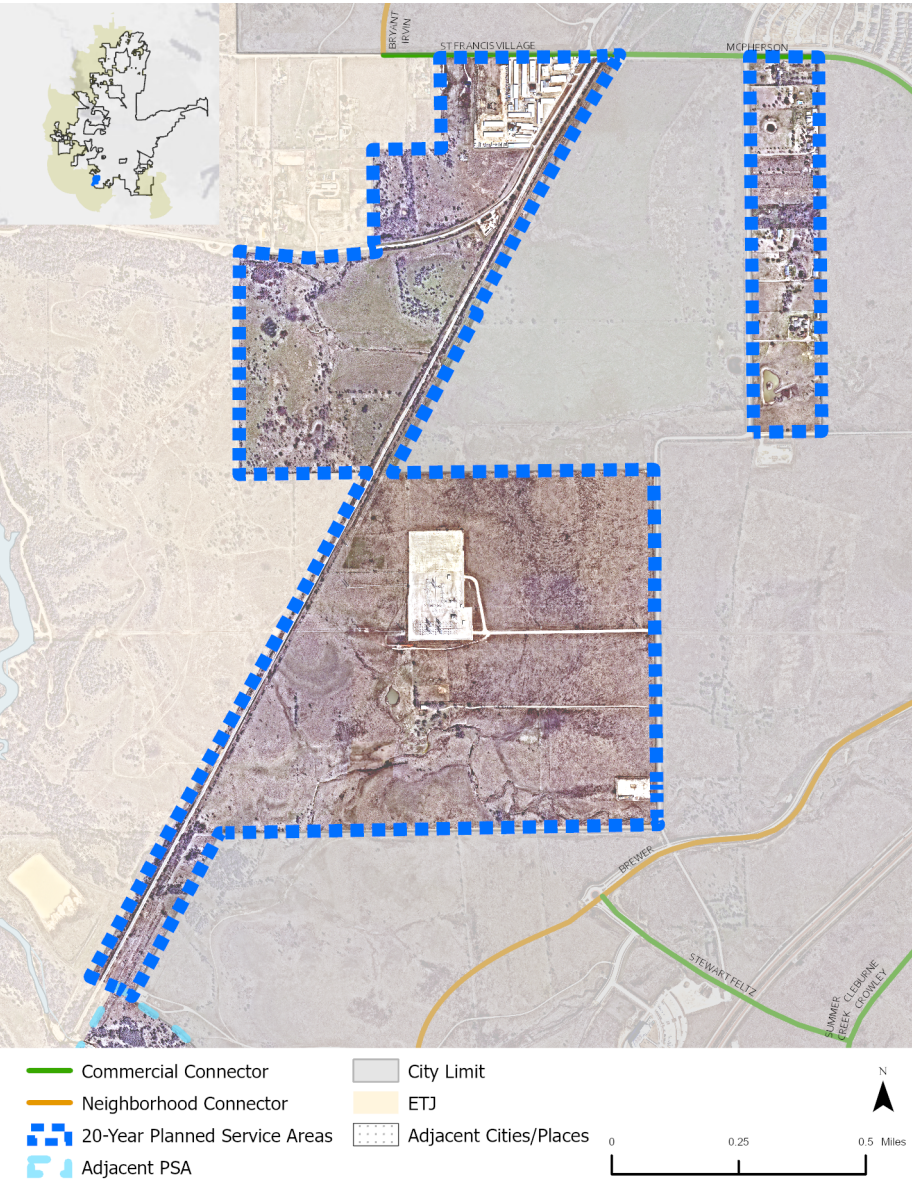


Source: City of Fort Worth Departments: Development Services, Fire & Emergency Services, IT Solutions, Planning & Data Analytics, Water, and the City Manager's Office, 2022.

11) OAKMONT/CHISHOLM TRAIL PARKWAY AREA

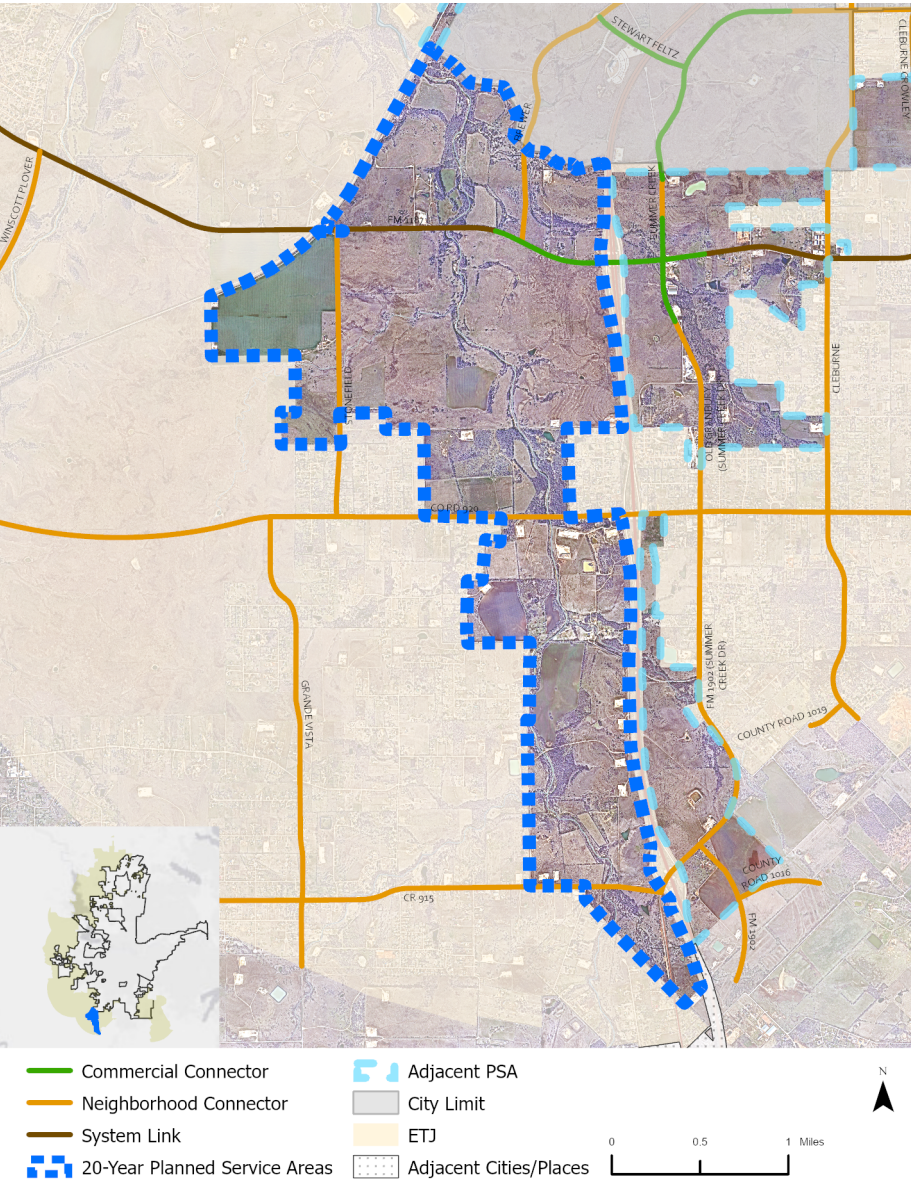


12) OLD GRANBURY RD/FWWR/TARLETON NORTH AREA

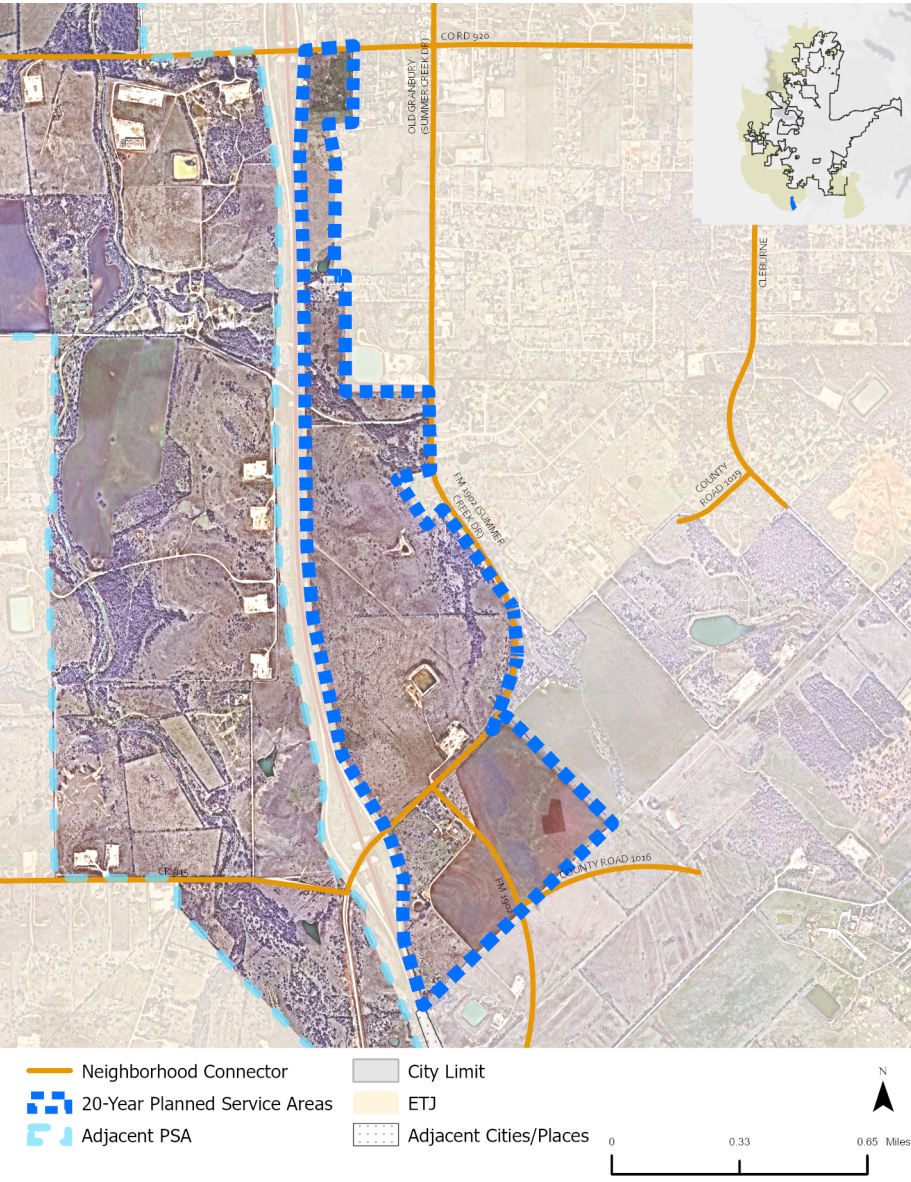


Source: City of Fort Worth Departments: Development Services, Fire & Emergency Services, IT Solutions, Planning & Data Analytics, Water, and the City Manager's Office, 2022.

13) ROCK CREEK BASIN & CHISHOLM TRAIL PARKWAY WEST AREA

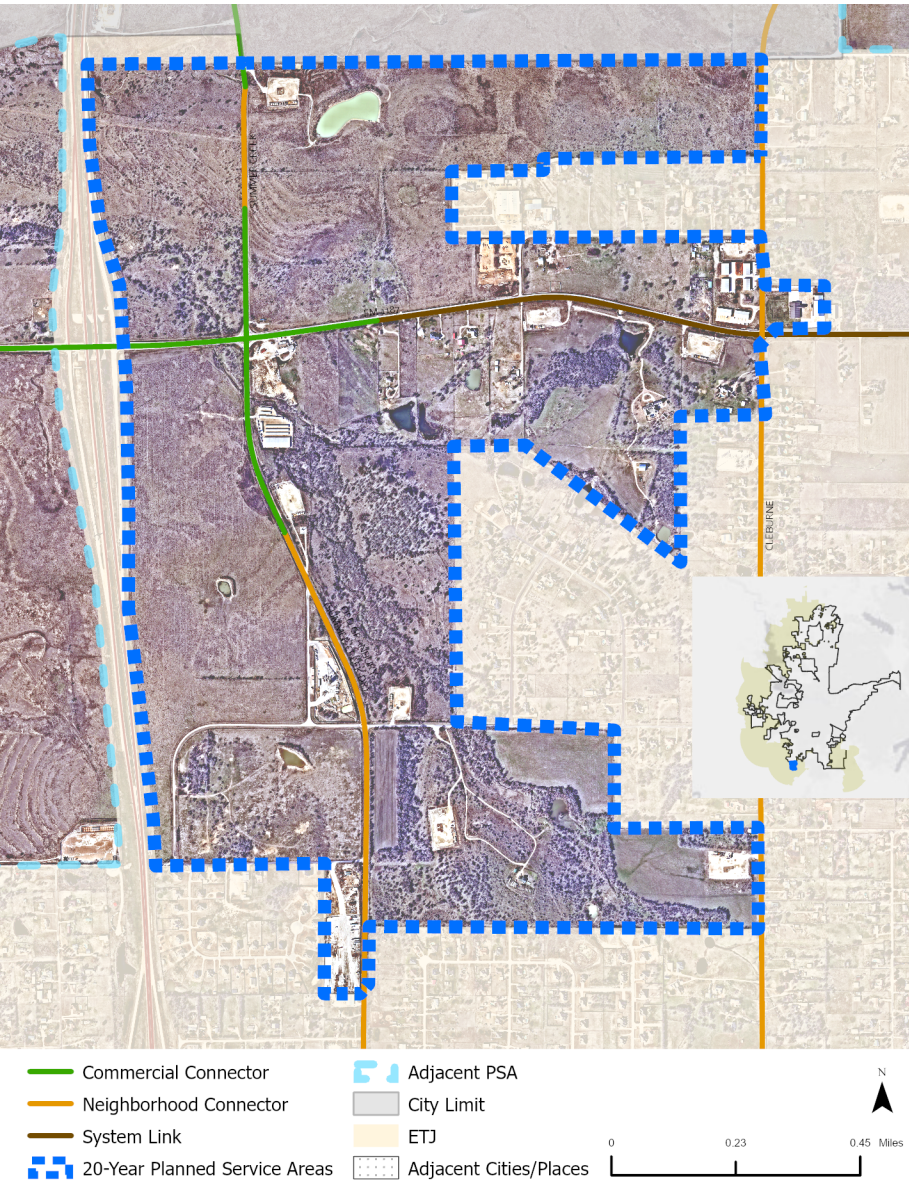


14) CHISHOLM TRAIL PARKWAY EAST/SOUTH CR 920 AREA

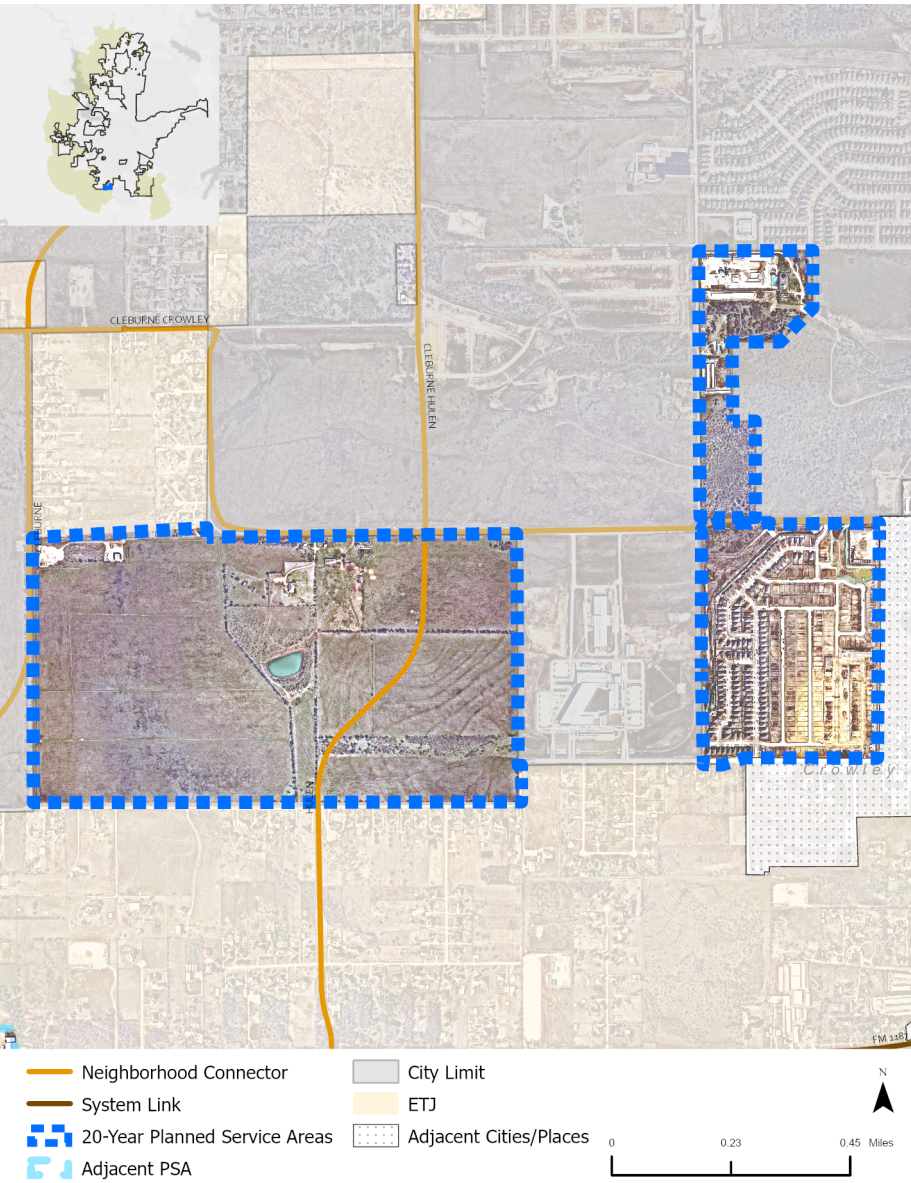


Source: City of Fort Worth Departments: Development Services, Fire & Emergency Services, IT Solutions, Planning & Data Analytics, Water, and the City Manager's Office, 2022.

15) CHISHOLM TRAIL PARKWAY/EAST FM 1187/CLEBURNE RD AREA

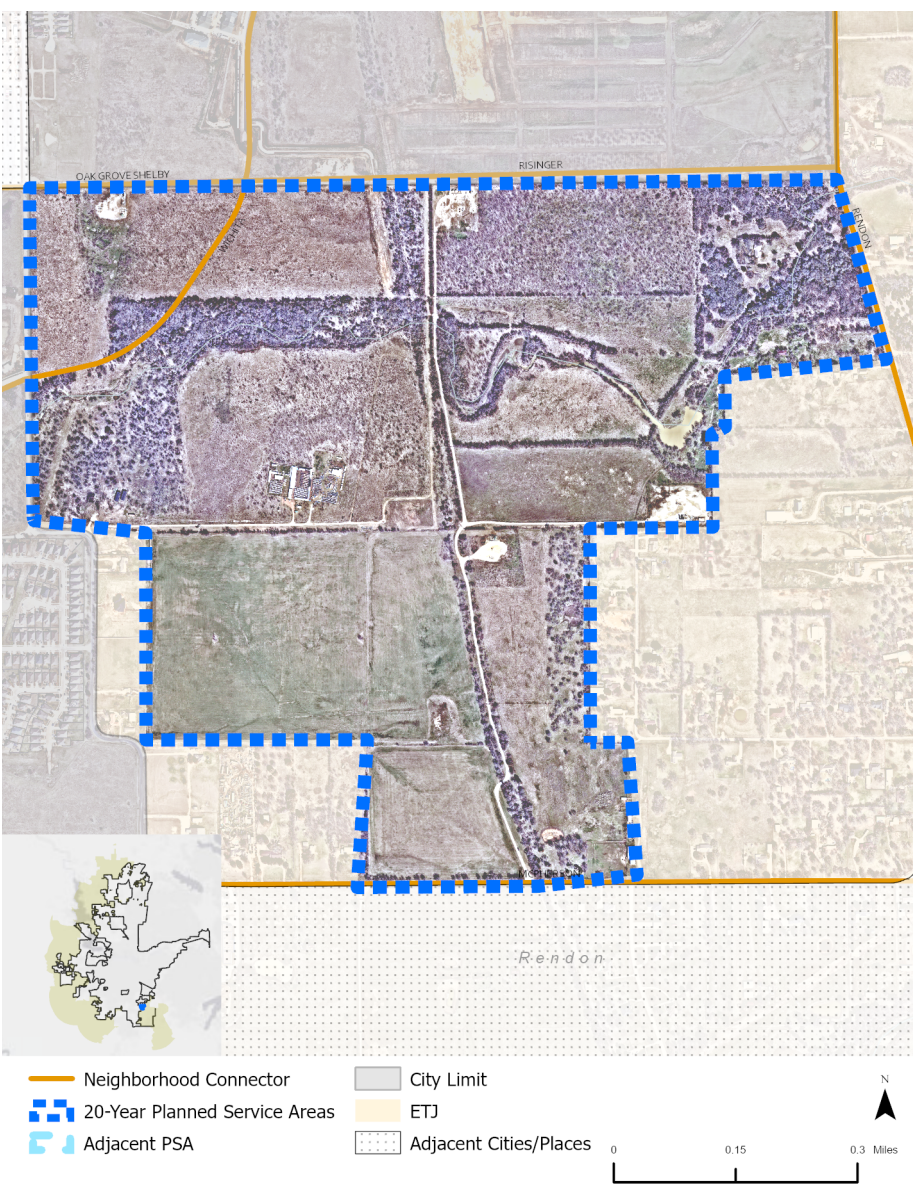


16) ROSEMARY/SOUTHFORK/THE BRIDGES AREA



Source: City of Fort Worth Departments: Development Services, Fire & Emergency Services, IT Solutions, Planning & Data Analytics, Water, and the City Manager's Office, 2022.

17) EVERMAN AREA - SOUTHEAST



Source: City of Fort Worth Departments: Development Services, Fire & Emergency Services, IT Solutions, Planning & Data Analytics, Water, and the City Manager's Office, 2022.