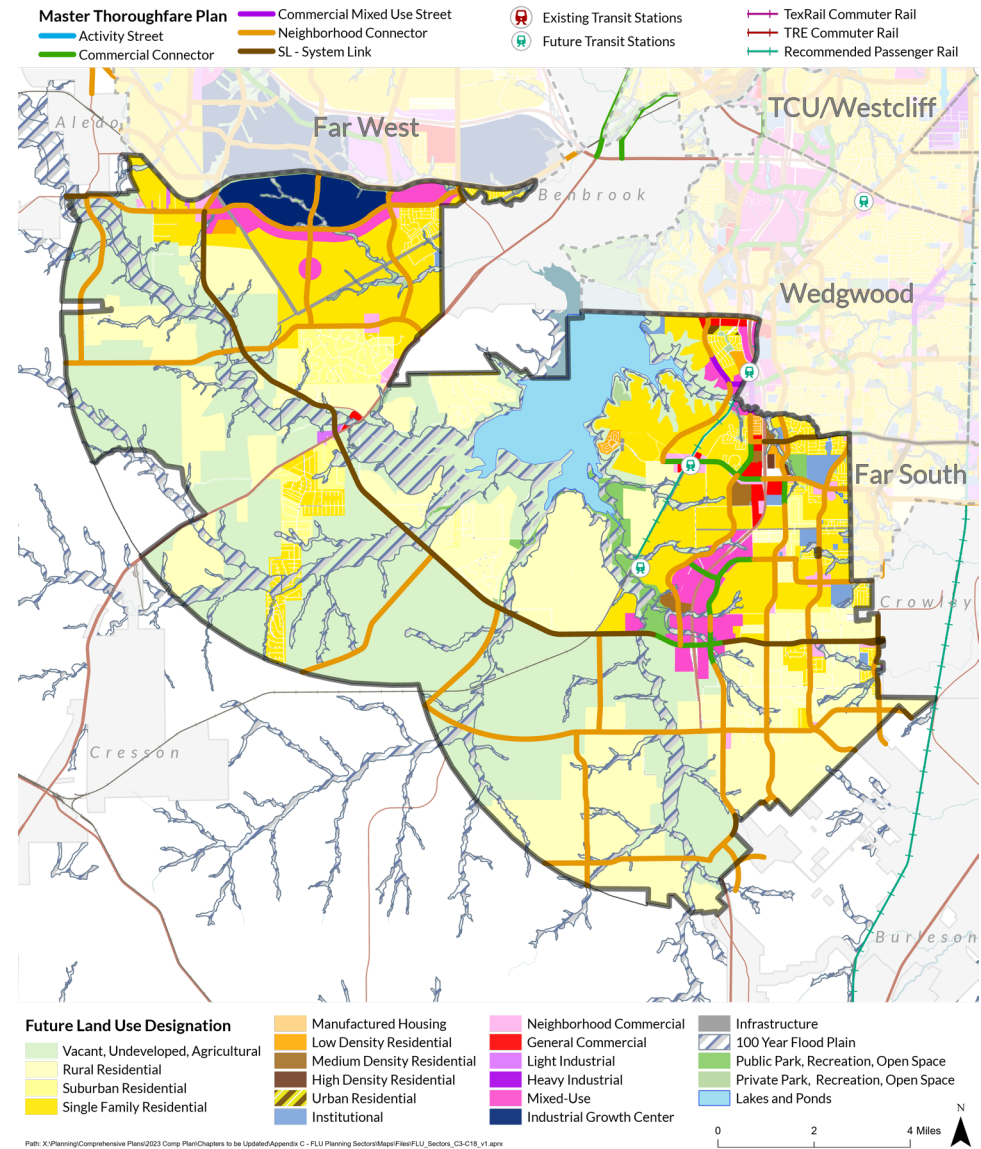


FAR SOUTHWEST SECTOR FUTURE LAND USE

Sector Land Use Policies

1. Promote fiscally sustainable growth on the periphery of the city by encouraging development adjacent to existing adequate infrastructure and discouraging leapfrog development.
2. Support the extension of rail transit to the Far Southwest sector.
3. Promote transit-oriented development (TOD) around the planned Summer Creek TEX Rail station.
4. Promote commercial, mixed-use, and urban residential development within the Summer Creek Future TOD and SH 121/FM 1187 Mixed-Use Growth Centers, including the new Tarleton State University campus area.
5. Within the Lake Benbrook watershed, promote the clustering of new residential development to preserve as common open space or dedicated parkland the following types of land features: floodplains, riparian buffers, steep slopes, wooded areas, special habitat areas, and unique views.
6. Promote only those uses near Lake Benbrook that will ensure protection of water quality, including protection of riparian buffers and use of Green Infrastructure techniques.
7. Encourage the preservation and enhancement of the natural landscape by retaining trees, natural drainage ways, and unique vistas.
8. Protect land needed for Green Infrastructure projects such as natural stormwater conveyance and detention, riparian buffer protection, and linear greenways with hike & bike trail alignments.
9. Create a hike & bike trail network in growing areas by promoting a connected system of pathways within floodplains and other open space corridors.
10. Promote the use of parallel local access lanes along major roadways to encourage development in which the front façade of homes can face the street without the need for multiple driveway curb-cuts on the major street, thereby preserving traffic flow and safety, increasing the pedestrian friendliness of the street, and eliminating the canyon effect of backyard fences lining the street.
11. Encourage major employers, retail, and urban residential to locate at or near proposed transit stops and entryways to the Chisholm Trail Parkway toll road., and the Walsh Ranch and Veale Ranch Growth Centers.
12. Encourage urban residential development in appropriate locations to create more walkable, pedestrian-oriented neighborhoods.
13. Work with school districts to identify suitable sites for future school development that make efficient use of existing infrastructure.
14. Promote healthy physical activity among children by designing enhanced walkability into neighborhoods surrounding new and proposed school sites.
15. Encourage co-location of schools and public parks to promote shared use of facilities and to reduce maintenance costs.



"A comprehensive plan shall not constitute zoning regulations or establish zoning district boundaries."
Texas Local Government Code, Section 219.005.