

**Lake Arlington Lift Station Gravity Main - Part 1 & Part 2
Construction Phase
January 2023**

Key Fort Worth Staff:

Pratima Poudyal, senior P.E., project manager/Water Capital Delivery

- 817-392-6149; Pratima.Poudyal@FortWorthTexas.gov

Shane Behn, inspector

- 682-328-1264; Shane.Behn@FortWorthTexas.gov

Tony Sholola, P.E., assistant water director/Water Capital Delivery

Laura Wilson, P.E., deputy water director/Water Capital Delivery

Sally Ellertson, project communications/Water Capital Delivery

Contractor: SJ Louis Construction

Engineering Design Consultant: Brian Darby, James DeOtte Engineering Inc.

Fort Worth City Council

District 5 Councilmember Gyna Bivens

District Director Sandi Breaux

- 817-392-8805; District5@FortWorthTexas.gov
- Gravity Main Part 2

District 8 Councilmember Chris Nettles

District Director Sally Matzen

- 817-392-8808; District8@FortWorthTexas.gov
- Gravity Main Part 1

What is a gravity main?

A gravity sewer main moves wastewater/sewage using gravity, or Mother Nature.

What area is impacted by the construction and improvements?

The Lake Arlington Lift Station Gravity Main has two parts, the upstream gravity main (Part 1) and the downstream gravity main (Part 2). The design includes a 5,000 foot 78-inch in diameter sewer main (upstream gravity main Part 1) as well as a 3,000 foot 42-inch in diameter to 72-inch in diameter new sewer main (downstream gravity main Part 2).

Where are Part 1 and Part 2 located?

Part 1 is in Fort Worth Council District 8. It starts just south of Lon-Stephenson Road where it links with another Fort Worth sewer project. Part 1 ends at the connection to the Lake Arlington Lift Station/Part 3 of the Lake Arlington Lift Station and Force Main project near Freeman Drive.

Part 2 is the downstream sanitary sewer gravity main. It is on the northern end and is in Fort Worth Council District 5. Part 2 connects with Part 2 of the Lake Arlington Force Main and extends from the western point between Arkansas Lane and East Rosedale Street/West Pioneer Parkway eastward to Cooks Lane. Part 2 will connect with an existing 60-inch in diameter sewer main near Cooks Lane and Lancaster Avenue.

When will construction start?

You may have already seen some construction equipment in both project areas. We expect construction to be complete by late Spring/early Summer of 2024.

Why are we doing this project?

Portions of the existing wastewater collection system serving the Village Creek Wastewater Basin are at capacity. Increasing capacity is necessary to handle projected growth within the basin, which also includes the wholesale customer cities of Burleson and Crowley. The project map and a map of the Village Creek wastewater basin are in this summary.

What happens if the sewer system reaches capacity?

When it rains, the Village Creek wastewater system can experience sanitary sewer overflows, or wet weather overflows. This happens when untreated sewage in the city's underground sewer main overflows and raw sewage is released.

Is this part of a larger project?

Yes, the gravity main links up to the Lake Arlington Force Main Part 1 and Part 2 segments. The gravity main also links to Fort Worth's Upper and Middle Village Creek project - <https://www.fortworthtexas.gov/projects/cfw-upper-middle-village-creek-sewer-relief-main-north>. See the map below.

The gravity main, lift station and force main will increase the sanitary sewer capacity to handle projected growth, which includes the Tarleton campus. This system will be built along the west shore of Lake Arlington. It will move those peak flows to existing wastewater collection lines located north of Lake Arlington.

What is a lift station?

A lift station is used to pump wastewater or sewage from a lower level or elevation to a higher level. It is basically an oversized grinder pump. The Lake Arlington lift station was built just north of Freeman Drive, south of I-20 and east of Anglin Drive. The lift station will have an ultimate capacity of 80 million gallons per day.

What is a force main?

Force mains move wastewater/sewage using pressure. Pumps and compressors in a lift station have the energy that is needed to push/force the wastewater/sewage through. The future proposed force main will move the wastewater or sewage from the homes, businesses and properties to the Village Creek Water Reclamation Facility, also known as a wastewater treatment plant.

Part 1 of the force main starts at the lift station and ends east of the Cravens Road and Berry Street intersection. It is approximately 4.76 miles in length. Part 2 of the force main picks up at the Cravens Road and Berry Street intersection and extends to just south of Rosedale Street. It is approximately 2.21 miles in length. The lift station and both parts of the force main are shown on the project map for this project.

The force main is 42-inches in diameter. It will extend from the lift station, around Lake Arlington, and discharge into the existing Village Creek collection system north of Lake Arlington - near the intersection of US. 180/Lancaster Avenue. The projected end date - for both parts of the force main – is 2025.

Where do I find out more about this project?

Maps are in this summary. Links to the project pages include:

- <https://www.fortworthtexas.gov/projects/cfw-lake-arlington-gravity-main>
- <https://www.fortworthtexas.gov/projects/cfw-lake-arlington-lift-station>
- <https://www.fortworthtexas.gov/projects/cfw-lake-arlington-force-main-part1>
- <https://www.fortworthtexas.gov/projects/cfw-lake-arlington-force-main-part2>

How do I get updates?

Progress will be updated on the City of Fort Worth website at <https://www.FortWorthTexas.gov/projects/cfw-lake-arlington-lift-station-gravity-main>. You can also go to www.FortWorthTexas.gov and enter “101311” in the search bar.

If you want project page updates, click on the link above, then scroll down to the bottom of the project page and click on “Subscribe to this page.”

Sally Ellertson

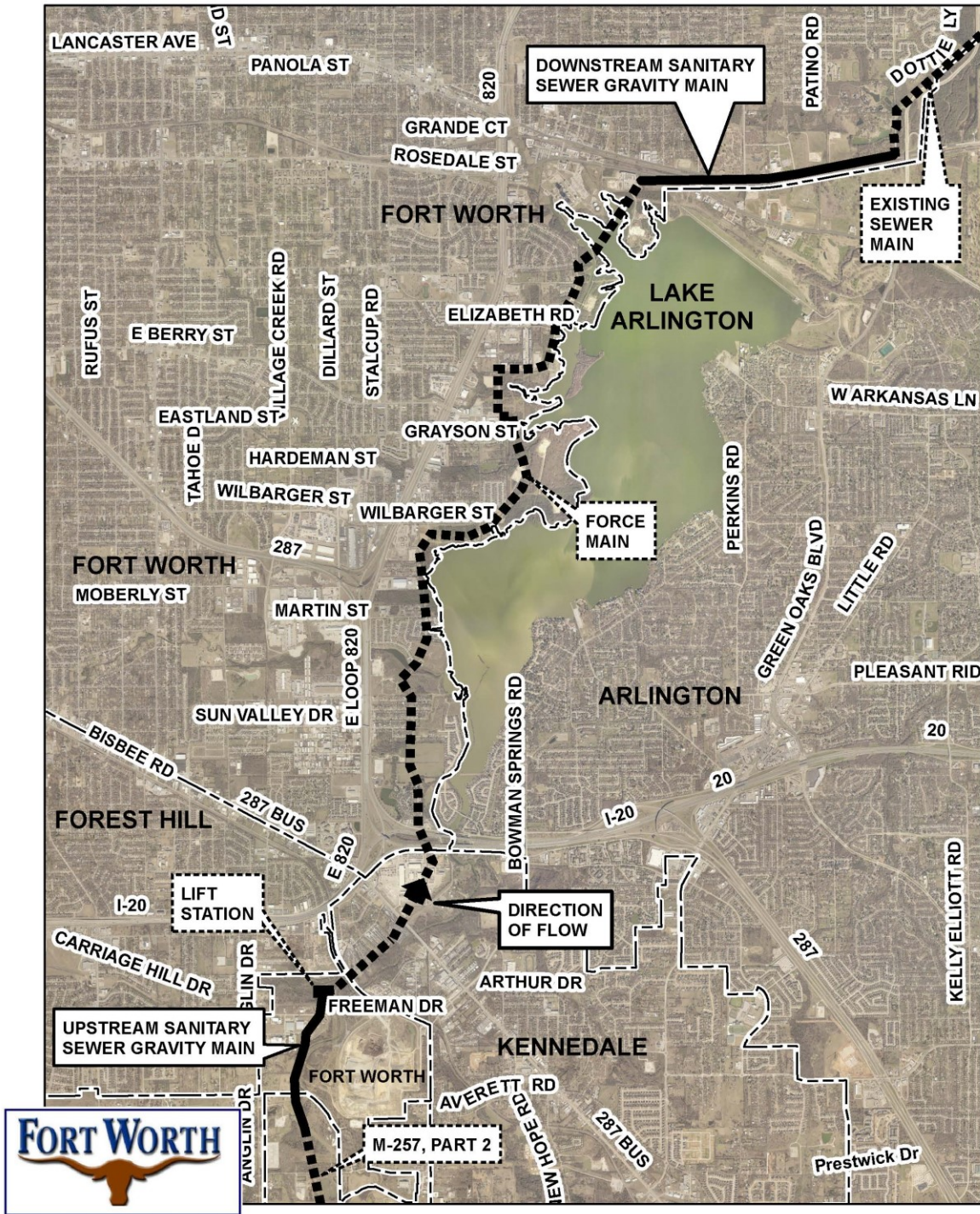
Project Communications

Capital Project Delivery

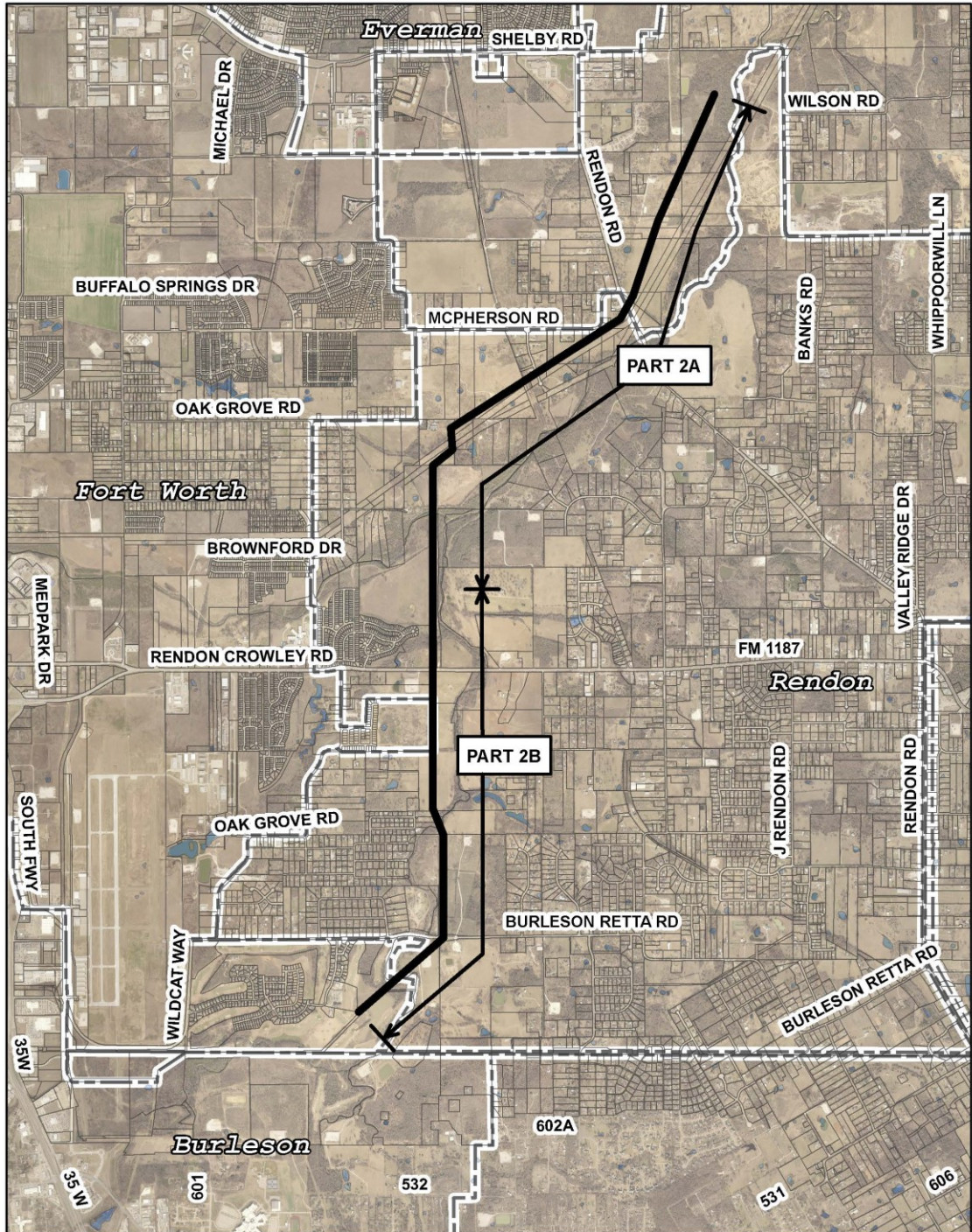
Office: 817-392-6260

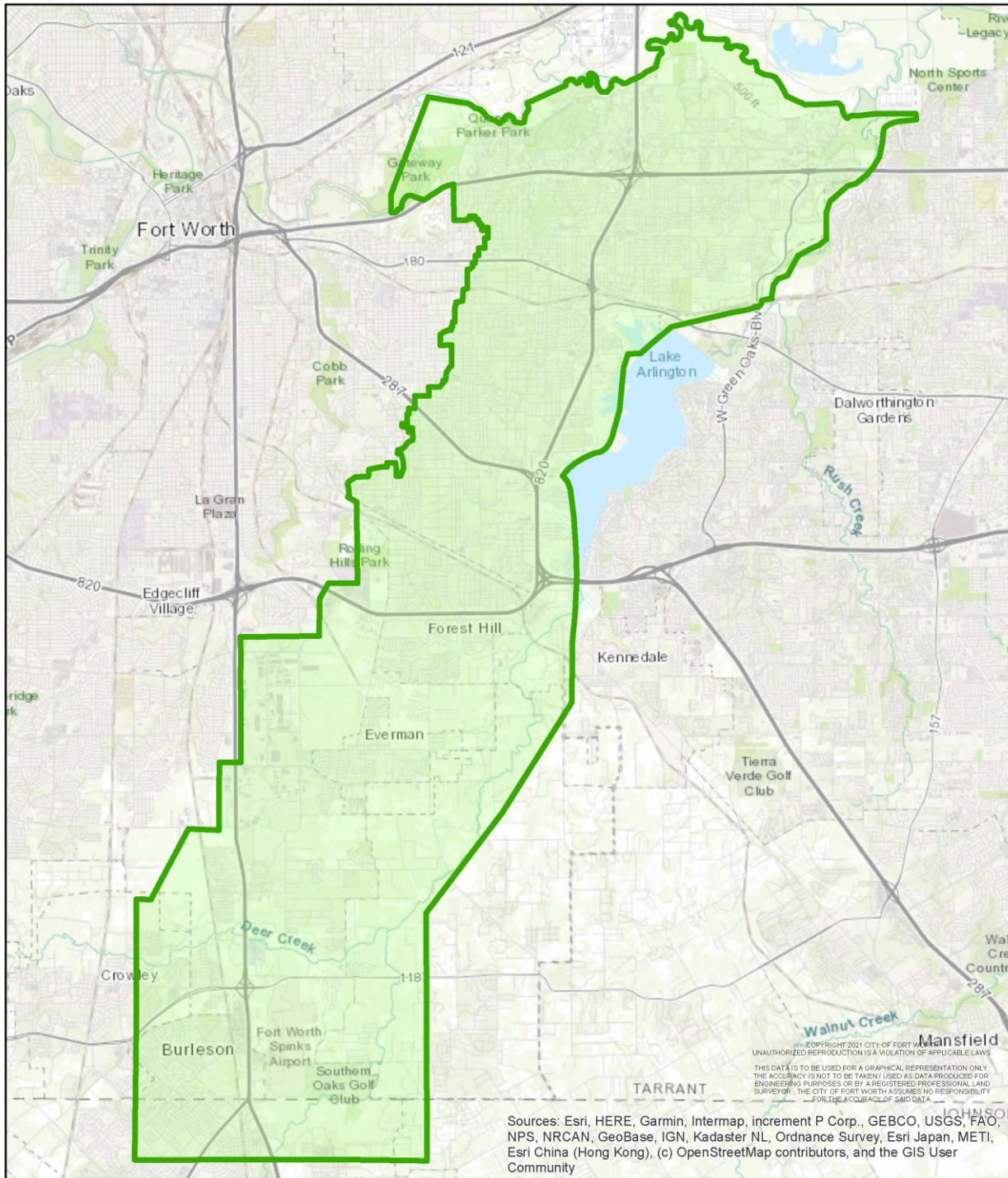
Email: Sally.Ellertson@FortWorthTexas.gov

Lake Arlington Lift Station Gravity Main



Upper and Middle Village Creek Parallel Relief Sanitary Sewer Main





Village Creek Wastewater Basin