

Stop 6 and Historic Rosedale Water and Sewer Improvements

WebEx community design meeting

October 20, 2022

Key Fort Worth Staff

Brenda Oropeza, project manager

- 817-392-8271
- Brenda.Oropeza@FortWorthTexas.gov

Tony Sholola, P.E., assistant water director/Water Capital Delivery

Sally Ellertson, capital project communications/Water Capital Delivery

Engineering Design Consultant: Binkley and Barfield Inc.

1 resident participated

Council District

District 5 Councilmember/Mayor Pro Tem Gyna Bivens

District 5 District Director Sandi Breaux

- 817-392-8805
- District5@FortWorthTexas.gov

Summary

This is a virtual WebEx community design meeting. The Stop 6 and Historic Rosedale Water and Sewer Improvement project is also known as City Project Number 103359.

This project impacts customers in the customers in the Stop 6 Sunrise, Historic Rosedale Park and Historic Stop 6 neighborhood association areas.

Why are you doing this project?

These water lines were selected for replacement because the existing material is cast iron. Fort Worth Water has pledged to remove up to 20 cast iron water lines in Fiscal Year 2023. There are also sewer lines in the vicinity that were identified as high risk due to the potential of failures.

What is the scope of this project?

Existing water and sanitary sewer mains will be replaced in nine streets and in four easements.

Project area landmarks include Dunbar High School, Jacquet Middle School, Sunrise McMillan Elementary School, Maude I Logan Elementary and A.M. Pate Elementary. The MLK Community Center and East Berry Library are also in the vicinity of the project.

What streets will be impacted?

- Stalcup Road from Elgin Street to Ramey Avenue (water)
- Easement between Bong Drive and Capers Avenue from Farrell Lane to Stalcup Road (sewer)
- Booker T Street from Stalcup Road to Andrew Avenue (water and sewer)
- Rickenbacker Place from Stalcup Road to Carverly Drive (water)
- Easement between Ramey Avenue and Lester Granger Street from Farrell Lane to 605 feet to the east (sewer)
- Birdell Court from Carol Avenue to Ramey Avenue (water and sewer)
- Mount Horum Way from Turner Street to Cox Street (water and sewer)
- Hatcher Street from East Berry Street to Wiman Drive (water and sewer)
- Reed Street from Village Creek Road to East Berry Street (water and sewer)

Will our water be turned off?

Water will be turned off for 15-30 minutes when service is transferred from the existing line to a temporary water line, and when the service is transferred from the temporary to the new line. These switchovers are done during the day. The contractor will knock on the door and let customers know when the water will be turned off. The transfer typically takes 30 minutes per house or business.

How does the temporary line impact my home and water bill?

The temporary water line insures that you are not without water during construction. In the summer months, the continuous flow keeps the water from becoming stagnant in the aboveground line.

During the winter months, water must be continually flowing through the temporary line to keep the line from freezing. Customers should also keep their faucets dripping. The bill for your water usage while you are on the temporary line is based on an average of the previous months' usage.

Will you need access to our property?

Most of the construction is in streets and a few are in easements. If Fort Worth Water needs access to your property, we will contact you.

Will our sewer service be disrupted?

Sanitary sewer service will not be interrupted. New sewer cleanouts will be installed at the property line. The sewer cleanout provides crews easy access if a backup or blockage occurs. The sewer line from the cleanout to the house is the owner's responsibility to maintain.

Will I have access to my driveway?

An inspector will be assigned to the project when we are ready to start construction. The inspector and the contractor will work with residents who need driveway access during active construction hours.

Will the city's trash truck be able to pick up my trash and recycling during construction?

If your side of the street is closed on your scheduled trash collection day, the contractor will take your trash and recycling carts to the opposite side of the street so the trash collection vehicle can pick it up.

Will there be lane closures during construction?

Yes. Signs will be posted to alert motorists.

What are the construction hours?

The hours of construction are 7 am to 6 pm, Monday-Friday and, if requested by the contractor, 9 am. to 4 pm/5 pm on Saturdays.

What is the timeline of this project?

This project is still in the design phase. We expect to finalize the design, advertise for bids, and select a contractor by Spring 2023. We will host a community construction meeting after we have a contractor on board.

Where can I get more information?

Go to www.FortWorthTexas.gov and type in the project number – 103359- in the search bar on the home page. Westcliff and Westcliff West Area Water and Sewer Improvements will pop up.

To get project page updates, scroll down to the bottom of the project page and click on “Subscribe to this page.” The link to the project summary/frequently asked questions will be linked to this project page.

How do I report an emergency or non-emergency?

The 24-hour phone number for emergencies – water main breaks and sewer backups is 817-392-4477. Select Option 1.

Call the same phone number – 7 a.m.to 7 p.m., Monday-Friday - but do not select Option 1. This is the Water Call Center. The non-emergency number is not answered on city holidays.

You can also download the MyFW app from the App Store or Google Play. You can report sewer overflows, leaks and water main breaks, missing or broken meter lids, water theft, water violations, no water service, water pressure issues and other sewer concerns.

Sally Ellertson

Capital Project Communications

Capital Project Delivery

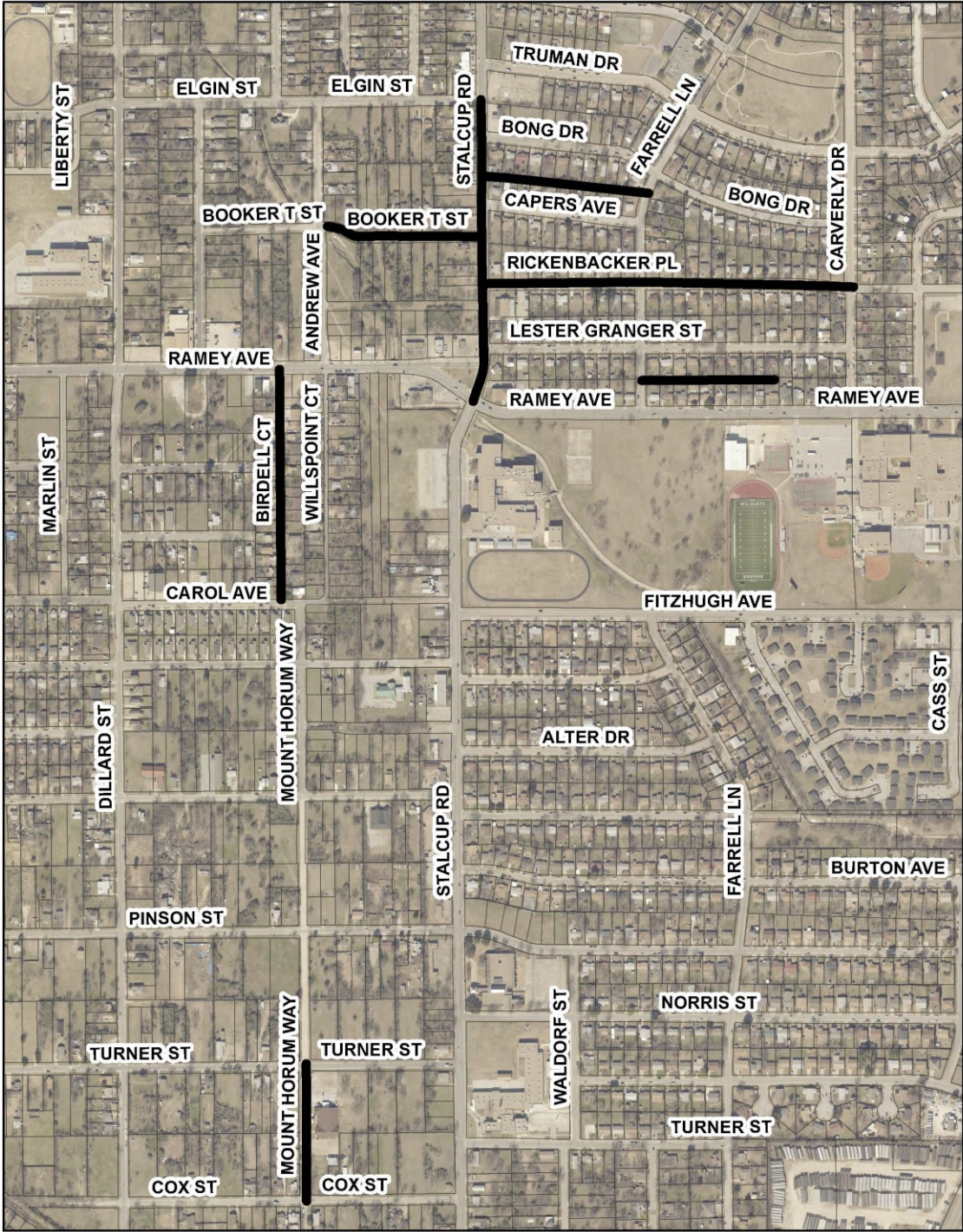
Fort Worth Water

Phone: 817-392-6260

Mobile: 682-215-1609

Email: Sally.Ellertson@FortWorthTexas.gov

Stop 6 and Historic Rosedale Water and Sewer Improvements Map 1



Stop 6 and Historic Rosedale Water and Sewer Improvements Map 2

