

Westcliff, Foster Park, Overton & Summerfields Area Improvements community design meeting

Monday, November 7, 6 p.m.

WebEx virtual meeting

Agenda

- Introductions
- Project Overview
- Project Area
- Frequently Asked Questions
- Timeline



Your project team includes:

Project Manager: Preeti KC

- 817-392-5467; Preeti.KC@FortWorthTexas.gov

Engineering Design Consultant: Multatech Engineering Inc.

- Robert Pretus
- Paul Padilla

Why are we doing this project?

Fort Worth prioritizes water and sewer line replacements based on available data which includes:

- Water main break history
- Leak history
- CCTV (closed circuit TV) inspection
- Age of the line
- Line material
- Lead service lines
- Cast iron lines

Project Overview

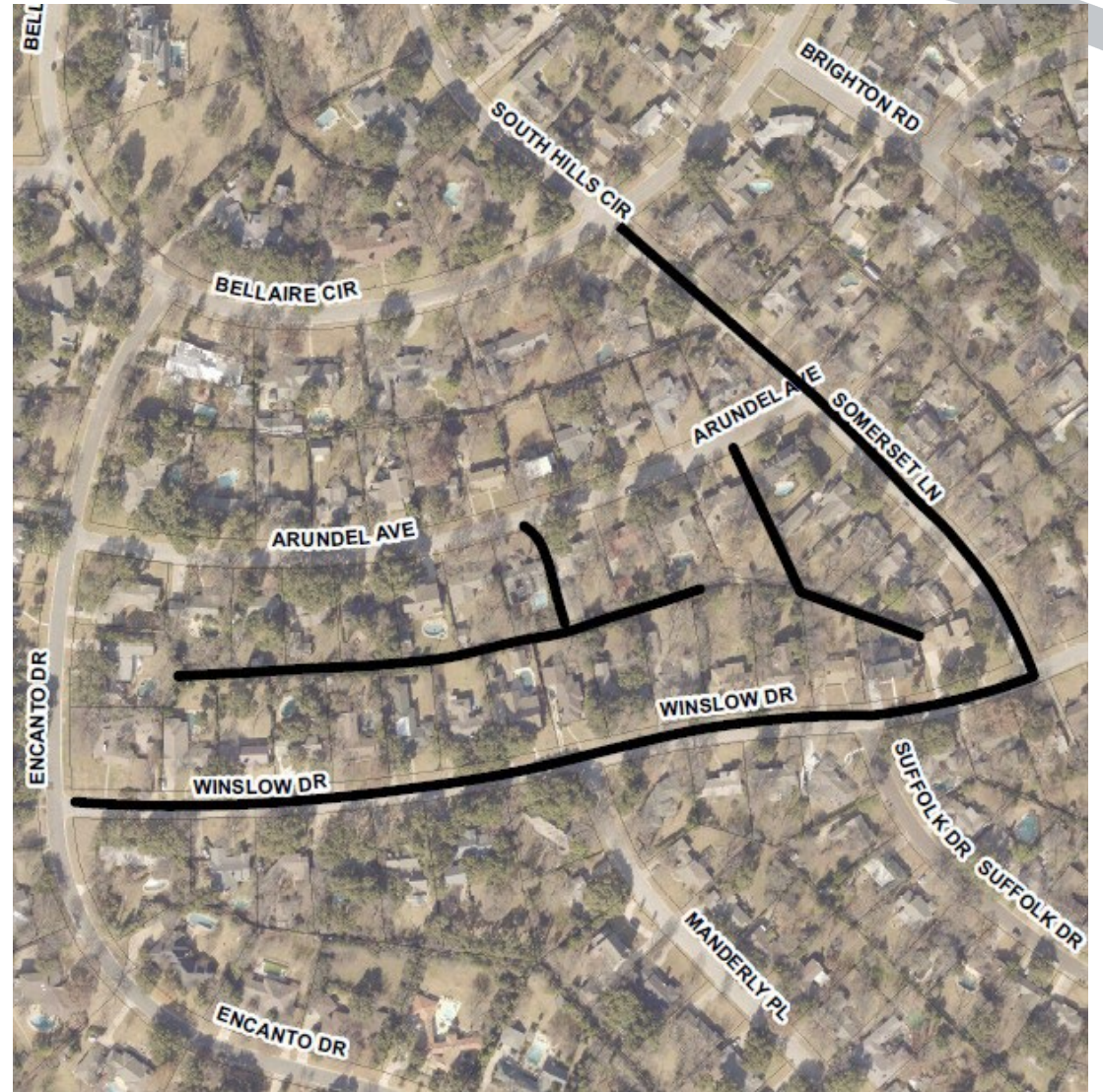
Existing water and sanitary sewer mains will be replaced in 11 streets and courts and in 10 easements.

This project is in Council District 3 and Council District 4.

Construction will impact the Overton Woods, Westcliff West, Foster Park, Overton Park and Summerfields neighborhood associations.

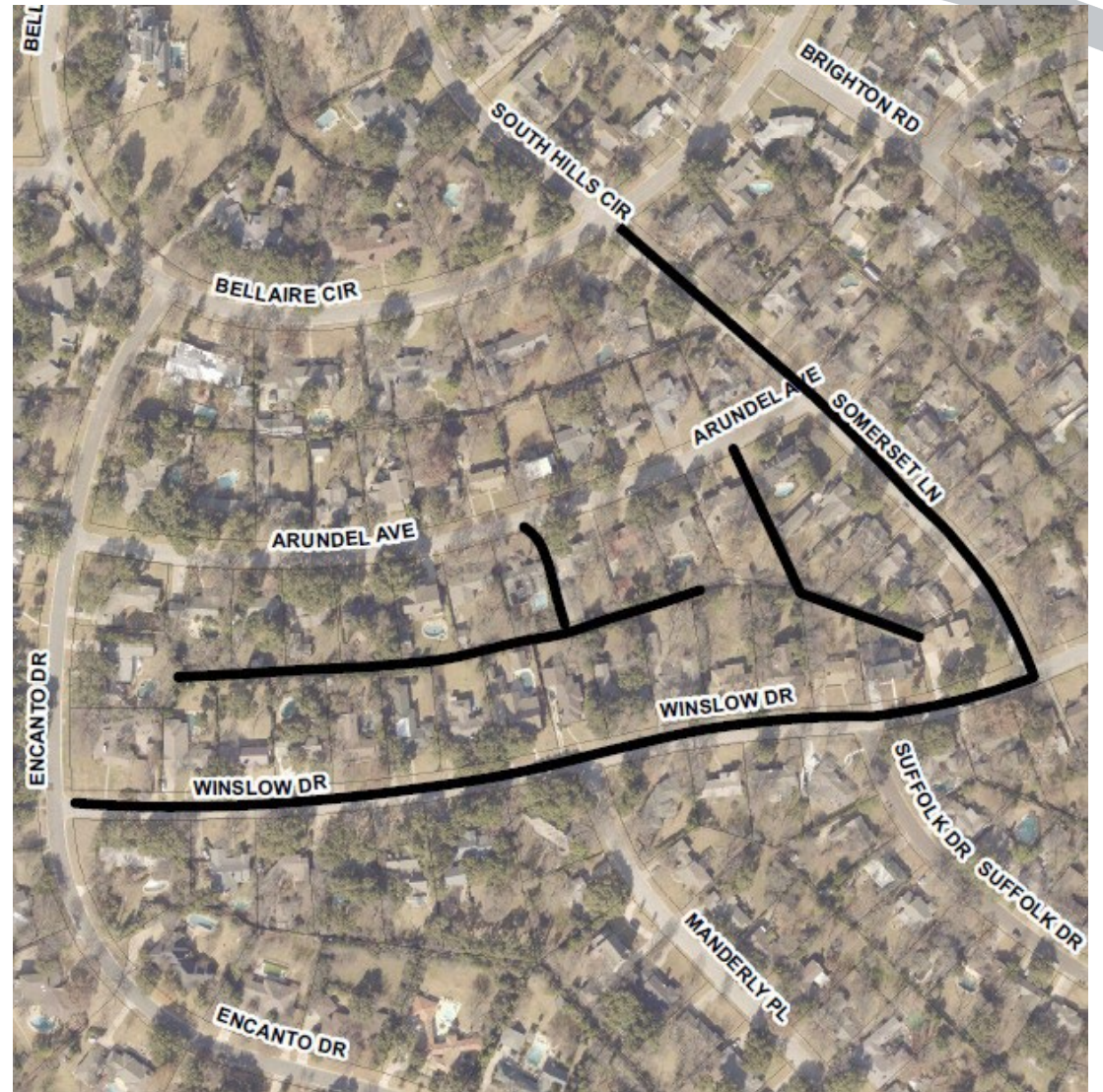
Project Area

- Winslow Drive from Encanto Drive to Somerset Lane (water)
- Somerset Lane from Bellaire Circle to Winslow Drive (water)
- Easement between Arundel Avenue and Winslow Drive from 220 feet east of Encanto Drive to 910 feet east (sewer)



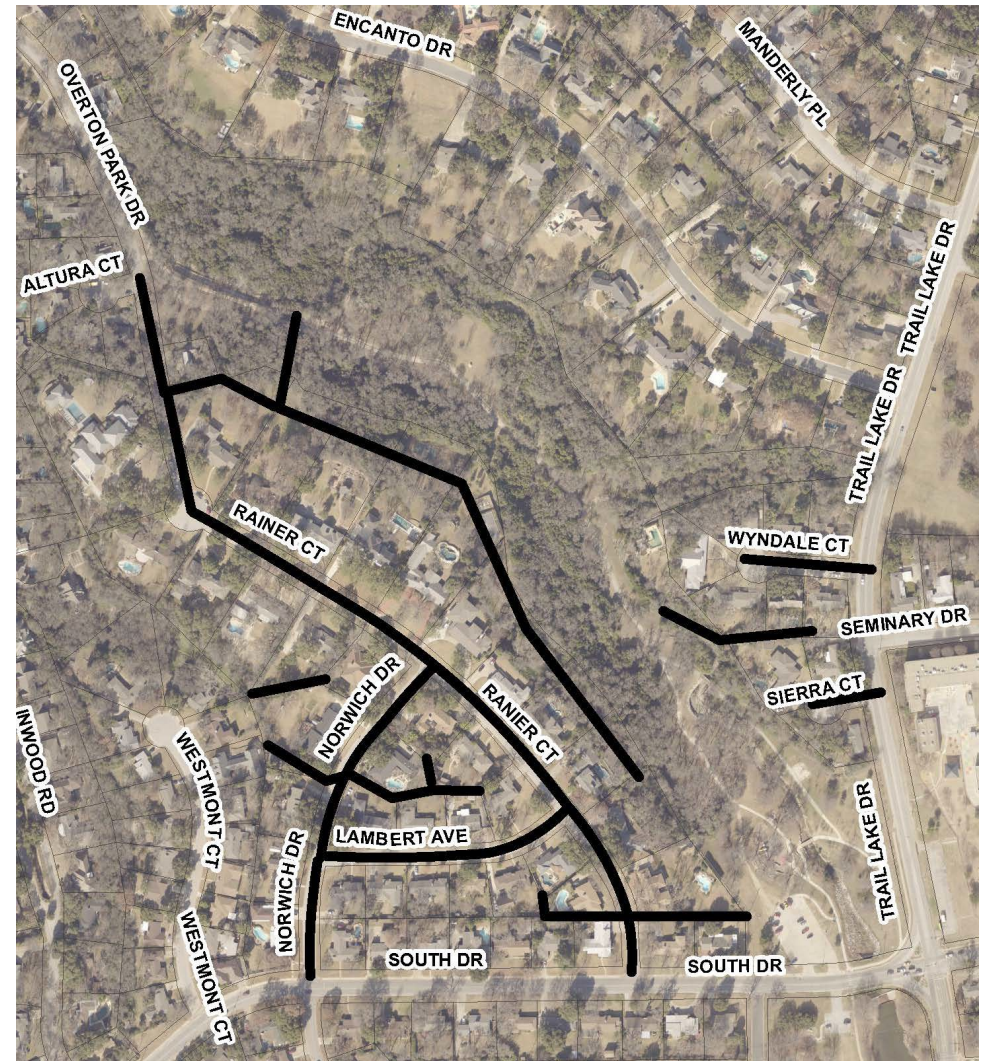
Project Area

- Easement south of Arundel Avenue from Arundel Avenue to 190 feet south (sewer)
- Easement west of Somerset Lane from Arundel Avenue to 500 feet south (sewer)



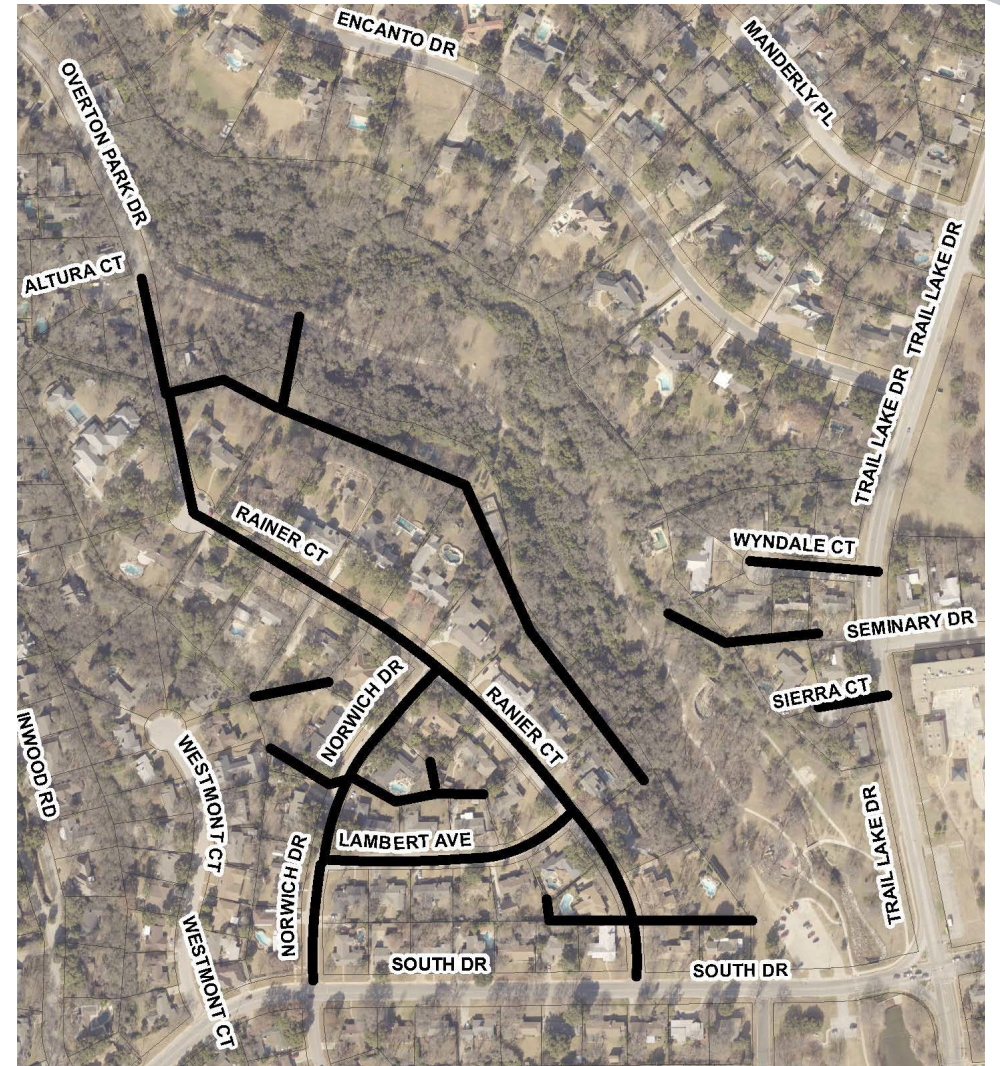
Project Area

- Overton Park Drive from Altura Court to Ranier Court (water)
- Ranier Court from South Dr. to 1,620 feet north



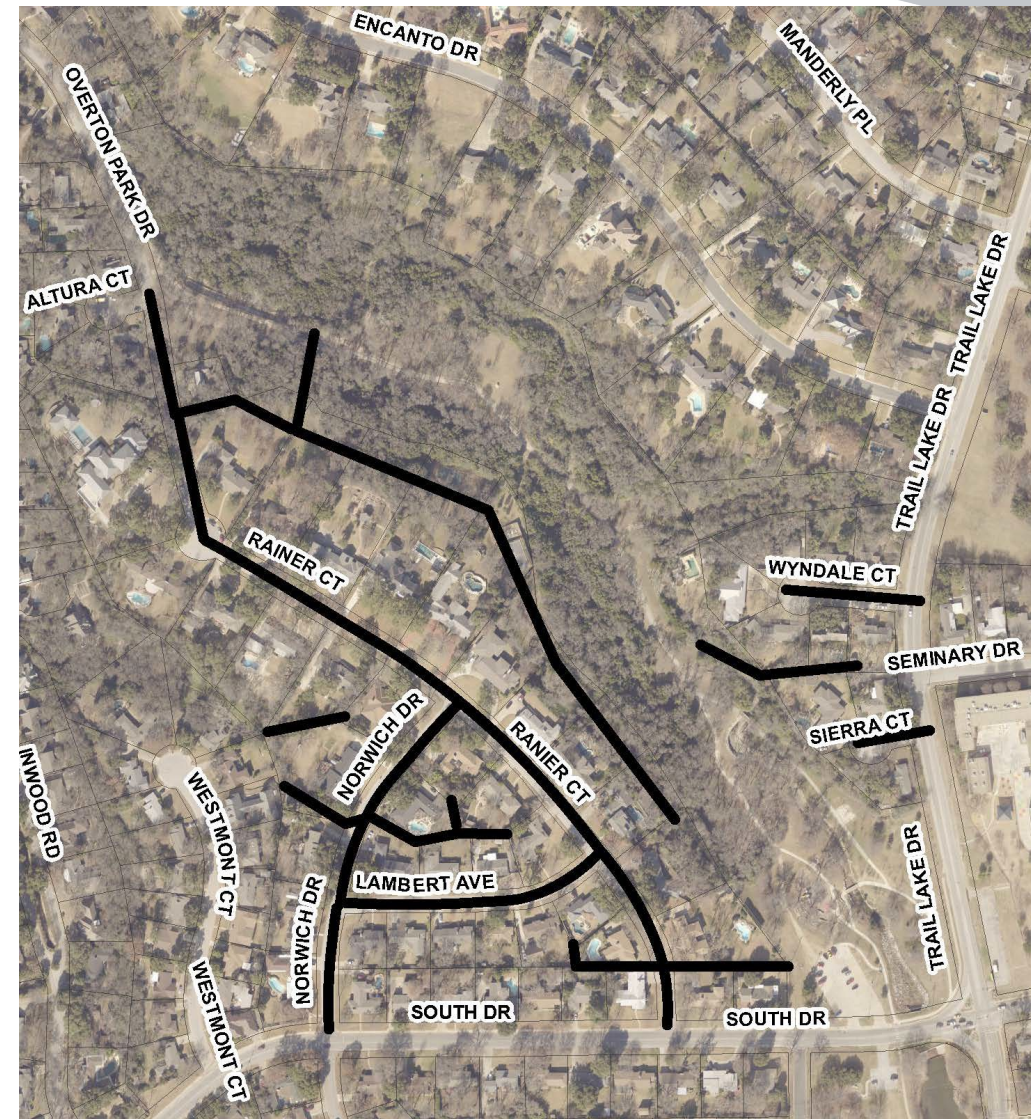
Project Area

- Norwich Drive from Ranier Court to South Drive (water)
- Lambert Avenue from Ranier Court to Norwich Drive (water)



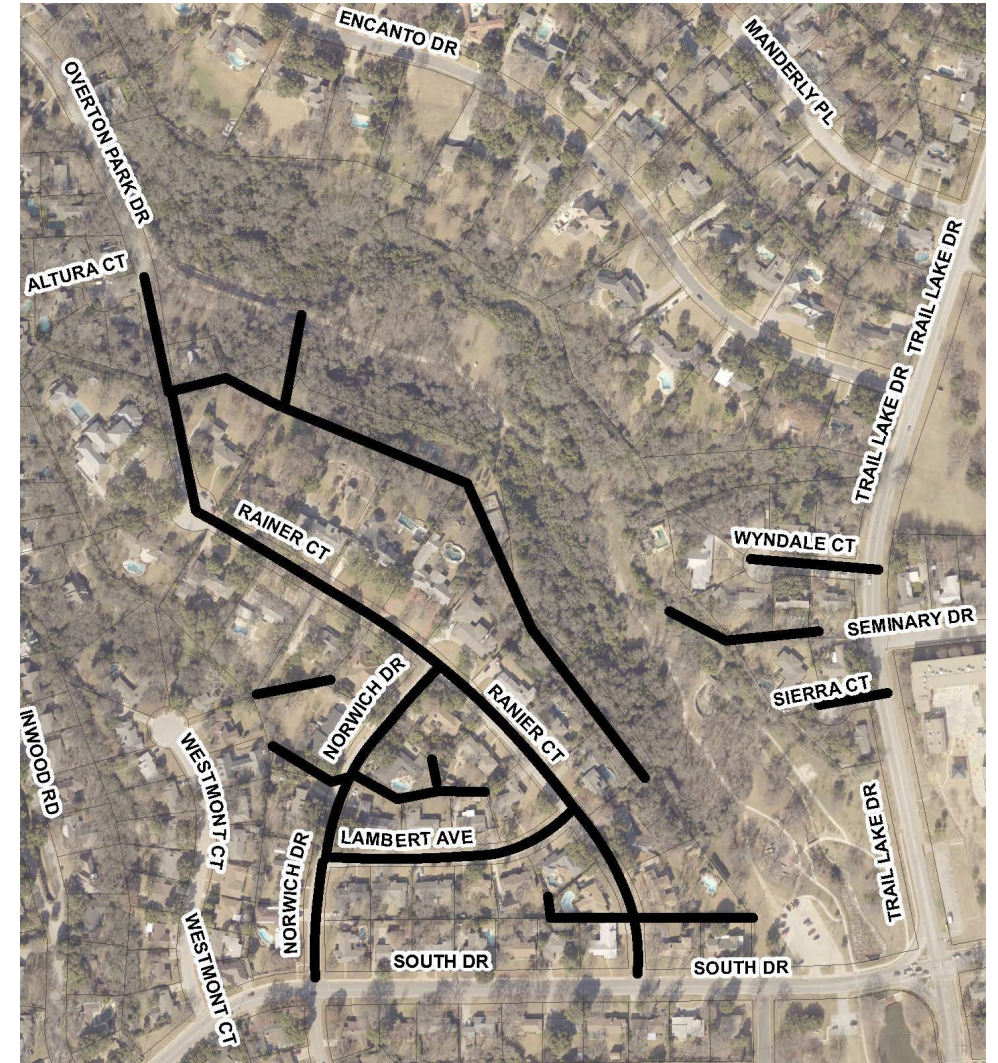
Project Area

- Wyndale Court from Trail Lake Drive to the cul-de-sac (water)
- Sierra Court from Trail Lake Drive to the cul-de-sac (water)
- Easement east of Ranier Court from 150 feet east of the Lambert Avenue/Ranier Court intersection to 1,510 feet north then 170 feet east (sewer)



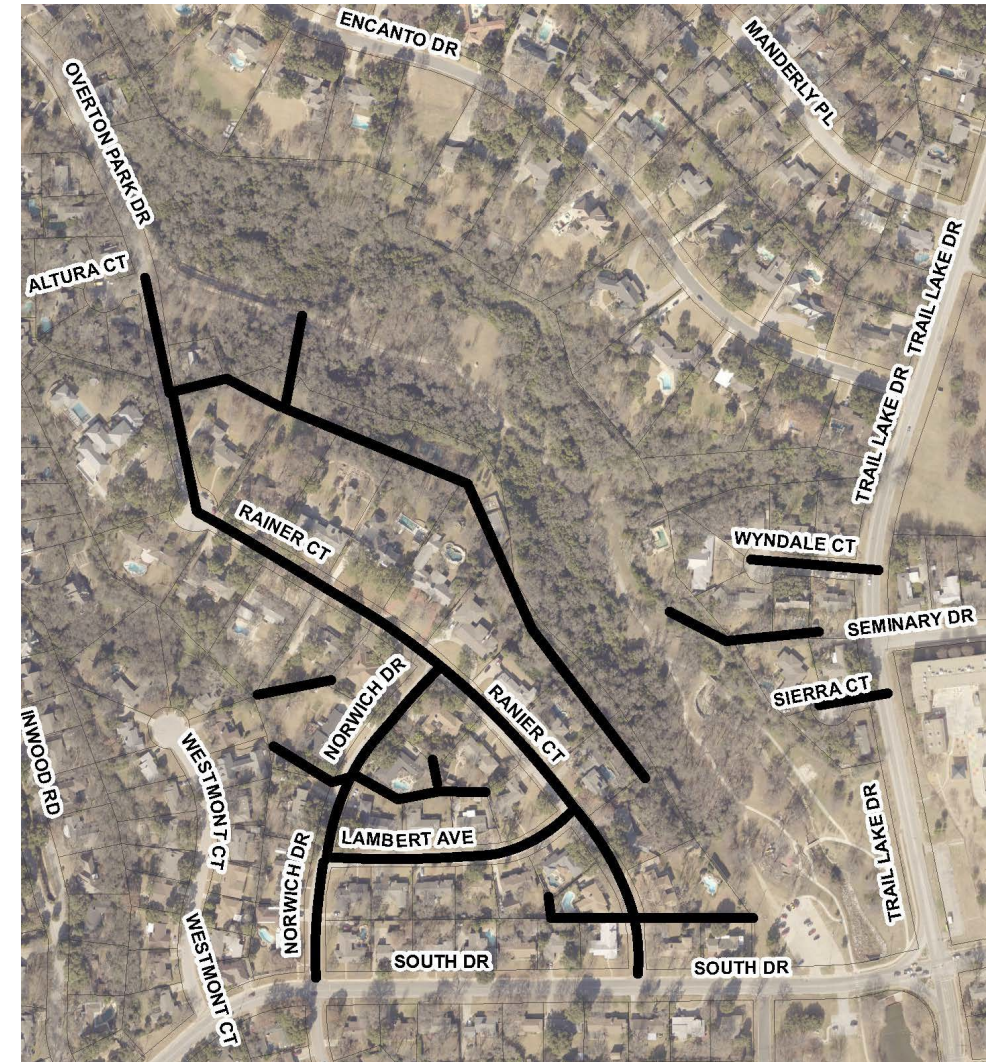
Project Area

- Easement west of Norwich Drive from 180 feet north of Norwich Drive to 170 feet west (sewer)
- Easement north of Lambert Avenue from 150 feet west of Ranier Court to 542 feet west (sewer)
- Easement east of Overton Park from 270 feet south of the Overton Park Drive/Altura Court intersection to 150 feet east/155 feet southeasterly (sewer)



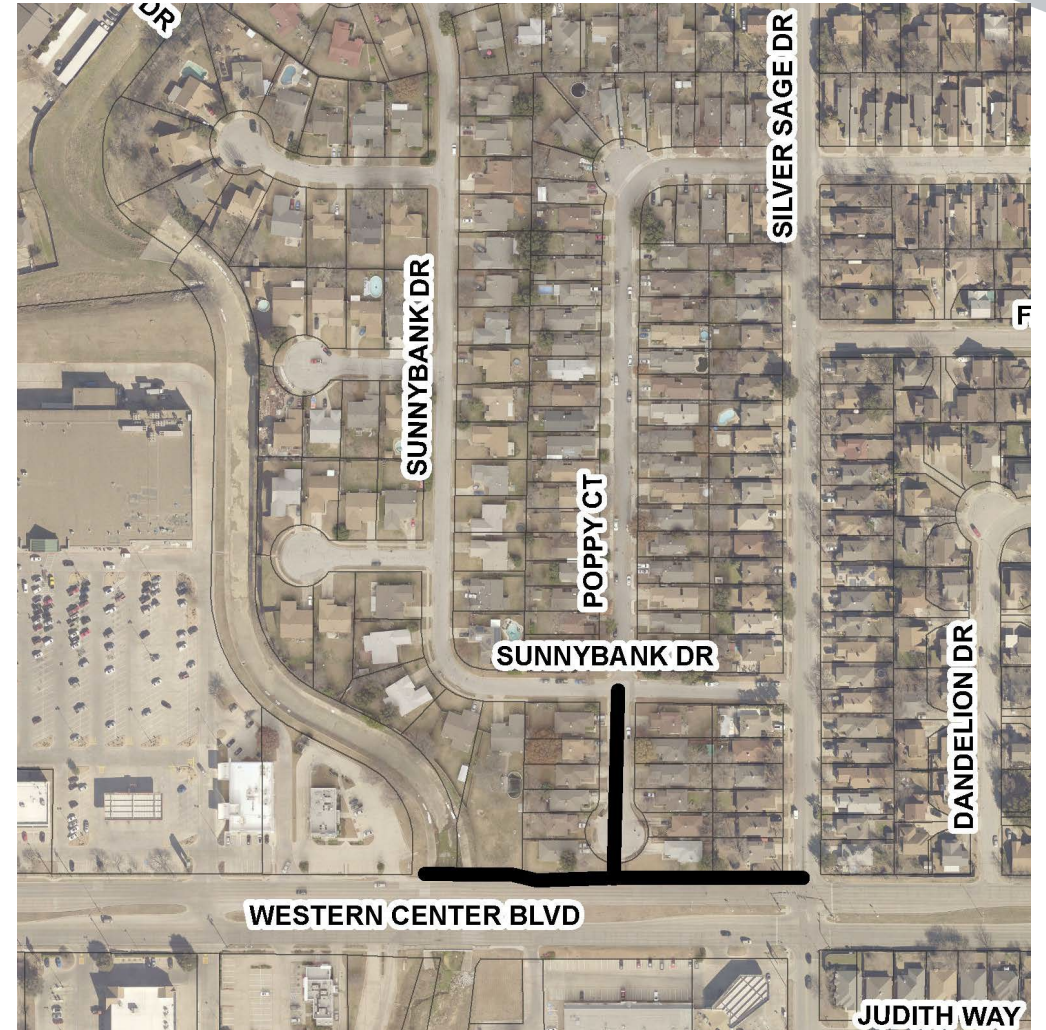
Project Area

- Easement north of South Drive from 150 feet north and 300 feet east of the South Drive/Ranier Court intersection to 500 feet west then 60 feet north (sewer)
- Easement between Sierra Court and Wyndale Court from 130 feet west of Trail Lake Drive to 360 feet west (sewer)



Project Area

- Western Center Boulevard from Silver Sage Drive to 600 feet west (sewer)
- Poppy Court from Sunnybank Drive to Western Center Boulevard (water and sewer)



Project Area

Ranch View Road from Bellaire Drive South to 67 feet east (sewer)



Project Area

Easement south of SW Loop 820
from Overton Ridge Boulevard to
610 feet west (sewer)

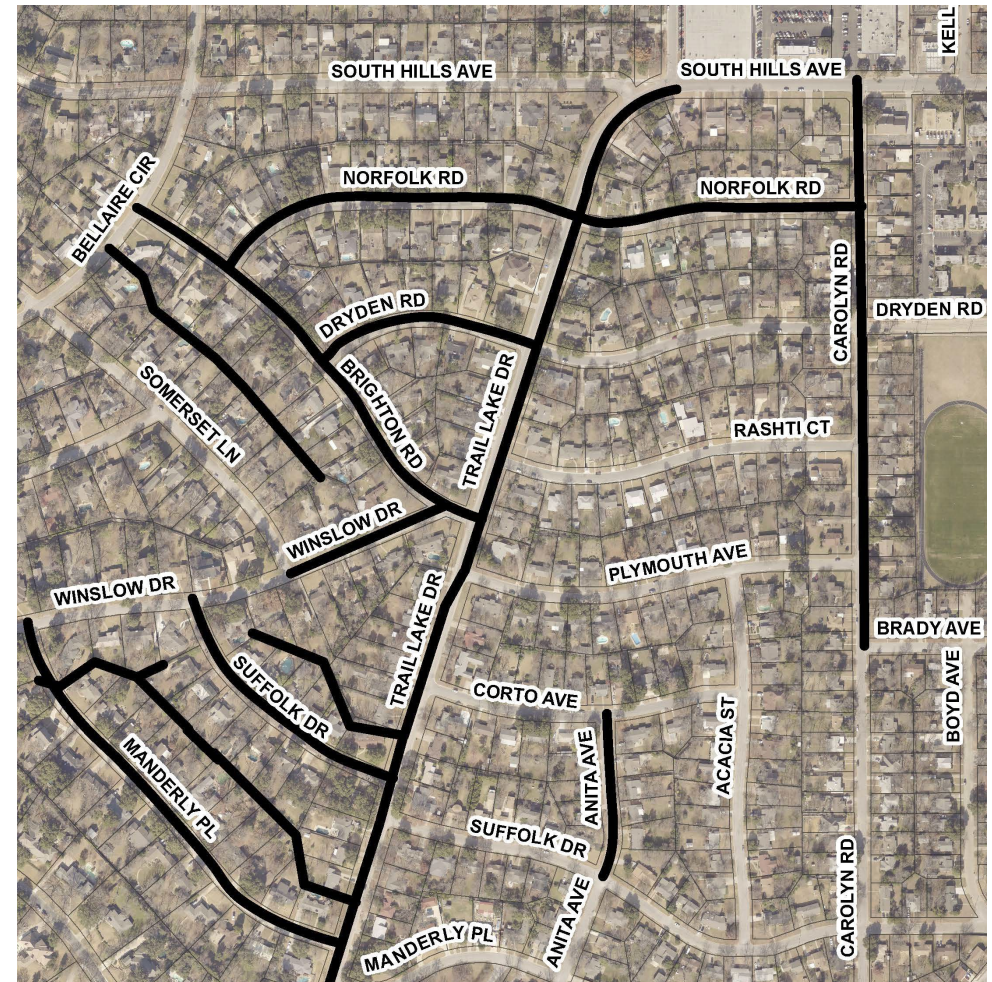


Two projects in Westcliff West area

If the map to the right looks familiar it's because we hosted a community design meeting for the Westcliff and Westcliff West Water and Sewer project on October 24.

The project we are talking about today includes Somerset Lane from Bellaire Circle to Winslow Drive and Winslow Drive from Somerset Lane to Encanto.

The two projects will be constructed in phases so as to minimize disruption to the residents.



Will our water be turned off?

Water will be turned off for 15-30 minutes when service is transferred from the existing line to a temporary water line, and when the service is transferred from the temporary to the new line. These switchovers are done during the day.

The contractor will knock on the door and let customers know when the water will be turned off. The transfer typically takes 30 minutes per house or business.



Will you need access to our property?

Construction will be in the streets and easements. If Fort Worth Water needs access to your property we will contact you. If an easement is needed for your property a city land agent will be contacting you soon.

Will our sewer service be disrupted?

Sanitary sewer service will not be interrupted. New sewer cleanouts will be installed at the property line. The sewer cleanout provides crews easy access if a backup or blockage occurs. The sewer line from the cleanout to the house is the owner's responsibility to maintain.



Will I have access to my driveway?

An inspector will be assigned to the project when we are ready to start construction.

The inspector and the contractor will work with residents who need driveway access during active construction hours.

Will the city's trash truck be able to pick up my trash and recycling during construction?

If your side of the street is closed on your scheduled trash collection day, the contractor will take your trash and recycling carts to the opposite side of the street so the trash collection vehicle can pick it up.



Will there be lane closures during construction?



Yes.

Signs will be posted to alert motorists.

What are the construction hours?

The hours of construction are 7 am to 6 pm, Monday-Friday and, if requested by the contractor, 9 am to 4 pm or 5 pm on Saturdays.

Timeline

This project is still in the design phase. We expect to finalize the design, advertise for bids, and select a contractor before Summer 2023.

We will host a community construction meeting after we have a contractor on board.



Where can I get more information?

- Go to www.FortWorthTexas.gov and type in the project number – 102783- in the search bar on the home page. Westcliff, Foster Park, Overton & Summerfields Area Improvements will pop up.
- To get project page updates, scroll down to the bottom of the project page and click on “Subscribe to this page.”
- The link to the project summary/frequently asked questions will be linked to this project page.

How do I report an emergency or non-emergency?

Emergencies

Water main breaks, sewer backups - 24 hours a day

817-392-4477, Select Option 1

Water Call Center (non-emergency)

- 7 am to 7 pm Monday through Friday
- 817-392-4477
- Closed City holidays



Download the MyFW app from the App Store or Google Play. You can report sewer overflows, leaks and water main breaks, missing or broken meter lids, water theft, water violations, no water service, water pressure issues and other sewer concerns.

Contact information

Project Manager: Preeti KC

- 817-392-5467; Preeti.KC@FortWorthTexas.gov

Engineering Design Consultant: Multatech Engineering Inc.

- Robert Pretus
- Paul Padilla

Contact information

Easement questions

- Land Agent: Austen Lopes
- 817-392-2567; Austen.Lopes@FortWorthTexas.gov

Tree and landscaping questions

- City Forester: Craig Fox
- 817-392-5729; Craig.Fox@FortWorthTexas.gov

Thank you



FORT WORTH®