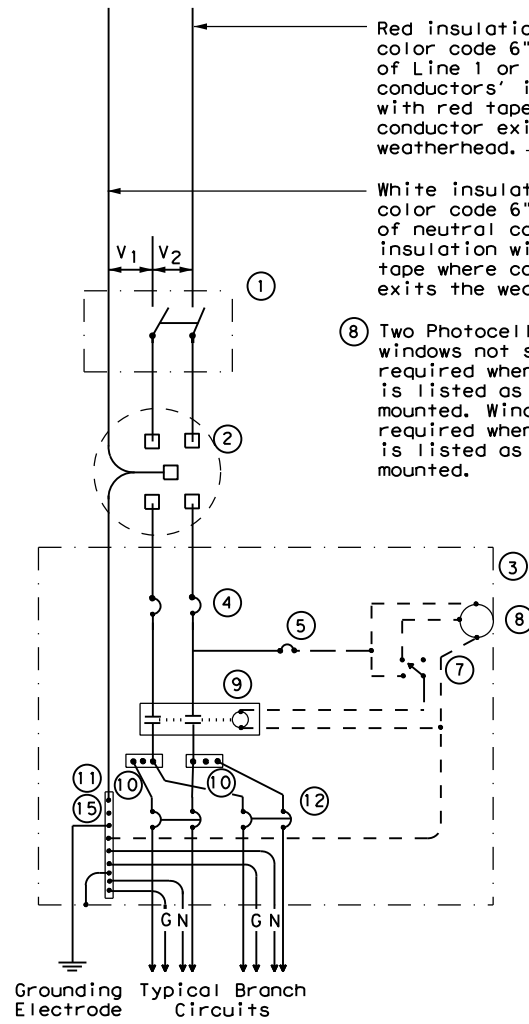


DISCLAIMER: The use of this standard is governed by the "Texas Engineering Practice Act". No warranty of any kind is made by TxDOT for any purpose whatsoever. TxDOT assumes no responsibility for the conversion of this standard to other formats or for incorrect results or damages resulting from its use.



**SCHEMATIC TYPE A
THREE WIRE**

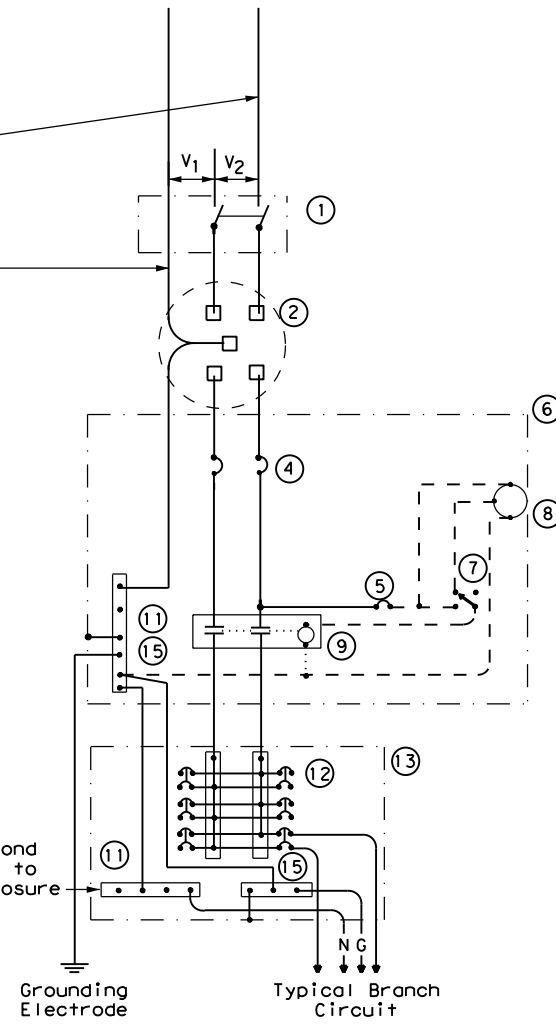
Red insulation or color code 6" length of Line 1 or Line 2 conductors' insulation with red tape where conductor exits the weatherhead.

White insulation or color code 6" length of neutral conductors' insulation with white tape where conductor exits the weatherhead.

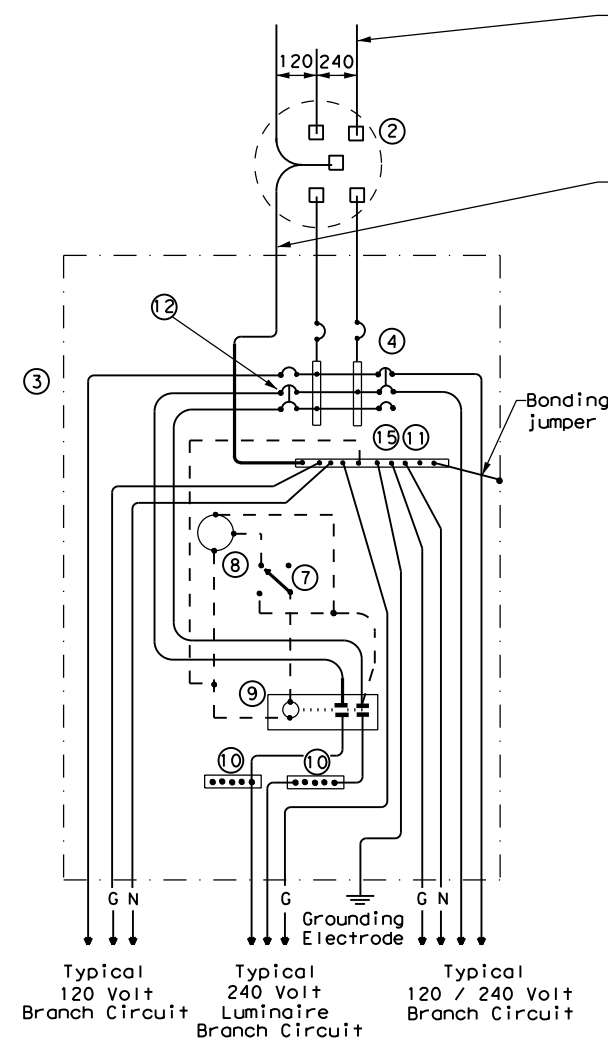
⑧ Two Photocell viewing windows not shown but required when photocell is listed as enclosure mounted. Windows not required when photocell is listed as pole top mounted.

Do not bond this bus to the enclosure

WIRING LEGEND	
————	Power Wiring
- - - -	Control Wiring
—N—	Neutral Conductor
—G—	Equipment grounding conductor-always required



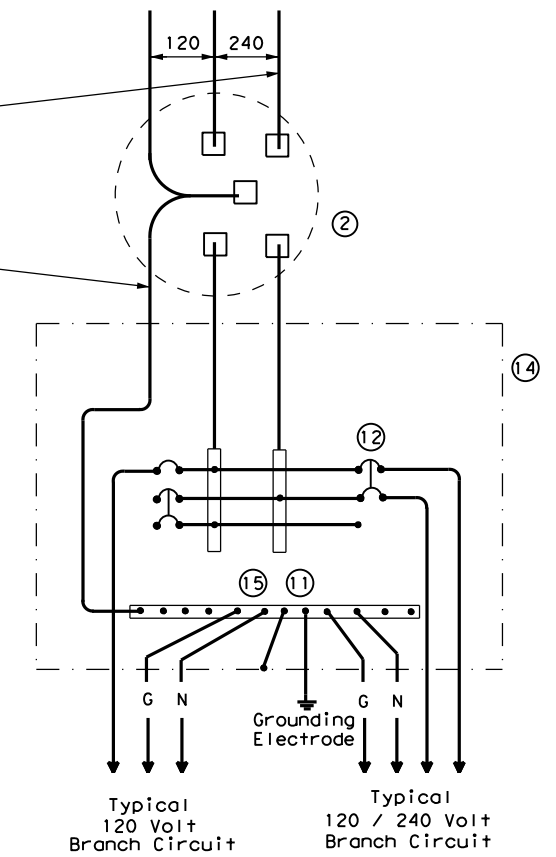
**SCHEMATIC TYPE C
THREE WIRE**



**SCHEMATIC TYPE D - CUSTOM
120/240 VOLTS - THREE WIRE**

Red insulation or color code 6" length of Line 1 or Line 2 conductors' insulation with red tape where conductor exits the weatherhead.

White insulation or color code 6" length of neutral conductors' insulation with white tape where conductor exits the weatherhead.



**SCHEMATIC TYPE T
120/240 VOLTS - THREE WIRE**
Galvanized steel-"Buy Off The Shelf" only. When required install photocell top of the pole or on luminaire only, no lighting contractor will be installed.

SCHEMATIC LEGEND	
1	Safety Switch (when required)
2	Meter (when required-verify with electric utility provider)
3	Service Assembly Enclosure
4	Main Disconnect Breaker (See Electrical Service Data)
5	Circuit Breaker, 15 Amp (Control Circuit)
6	Auxiliary Enclosure
7	Control Station ("H-O-A" Switch)
8	Photo Electric Control (enclosure-mounted shown)
9	Lighting Contactor
10	Power Distribution Terminal Blocks
11	Neutral Bus
12	Branch Circuit Breaker (See Electrical Service Data)
13	Separate Circuit Breaker Panelboard
14	Load Center
15	Ground Bus

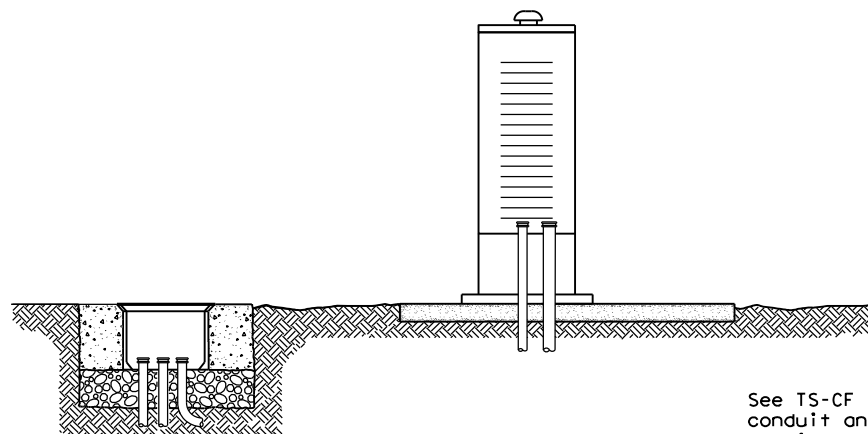
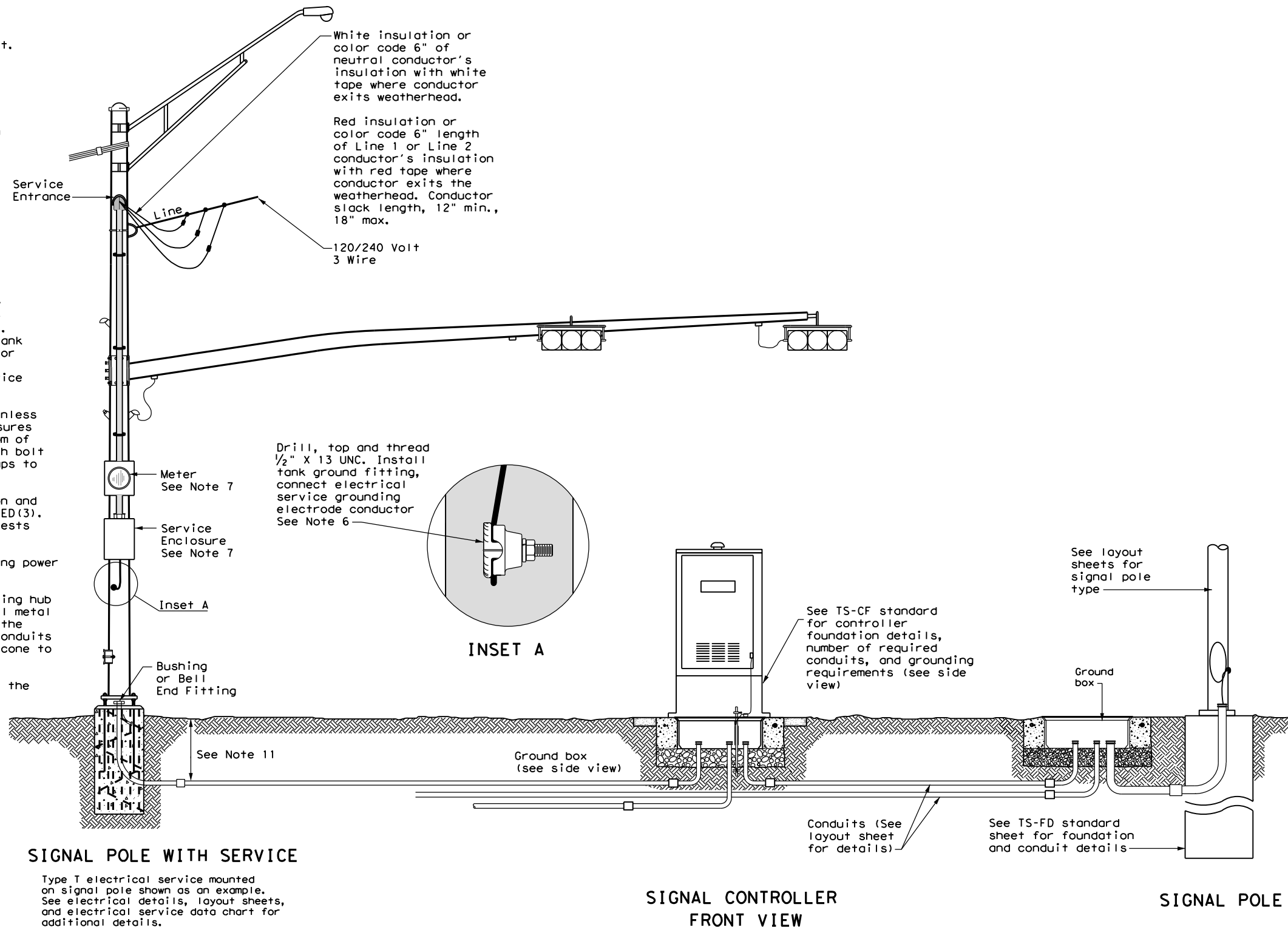
		Traffic Operations Division Standard	
ELECTRICAL DETAILS SERVICE ENCLOSURE AND NOTES			
ED(6) - 14			
FILE: ed6-14.dgn	DN: TxDOT	CK: TxDOT	DW: TxDOT
©TxDOT October 2014	CONT	SECT	JOB
REVISIONS		DIST	COUNTY
		SHEET NO.	
		106	

DATE:
FILE:

DISCLAIMER: The use of this standard is governed by the "Texas Engineering Practice Act". No warranty of any kind is made by TxDOT for any purpose whatsoever. TxDOT assumes no responsibility for the conversion of this standard to other formats or for incorrect results or damages resulting from its use.

TRAFFIC SIGNAL NOTES

1. Do not pass luminaire conductors through the signal controller cabinet.
2. Include an equipment grounding conductor in all conduits throughout the electrical system. Bond all exposed metal parts to the grounding conductor.
3. Provide roadway luminaires, when required, in accordance with the material and construction sections of Item 610, "Roadway Illumination Assemblies," except for performance testing of luminaires. Test installed roadway luminaires for proper operation as a part of the associated traffic signal system test.
4. If internally illuminated street name signs are approved for use, ground the fixture to the pole with a 12 AWG green XHHW conductor.
5. Bond anchor bolts to rebar cage in two locations using #3 bars or 6 AWG stranded copper conductors. Use listed mechanical connectors rated for embedment in concrete. See TxDOT standard TS-FD for further details.
6. Drill and tap signal poles for 1/2 in. X 13 UNC tank ground fitting. Provide and install tank ground fitting 4 in. to 6 in. directly below electrical service enclosure. Provide properly sized hole through the bottom of the enclosure for the service grounding electrode conductor. Connect the electrical service grounding electrode conductor to the tank ground fitting. Ensure electrical service grounding electrode conductor is as short and straight as possible from the enclosure to the tank ground fitting. See Inset A detail for further information. Size service entrance conduit and branch circuit conduit as shown in the plans.
7. Mount electrical service enclosure and meter to signal pole with stainless steel bands. Ensure bands are a minimum width of 3/4 in. Secure enclosures to bands using two-bolt brackets. Install brackets near top and bottom of each enclosure. Install properly sized stainless steel washers on each bolt in the enclosure. Band or drill and tap properly sized stand-off straps to signal pole for attaching conduit.
8. Conduct pull tests and insulation resistance tests on all illumination and power conductors as required in Item 620 "Electrical Conductors" and ED(3). To prevent electronics damage, do not conduct insulation resistance tests on traffic signal cables after termination.
9. Lock all enclosures and bolt down all ground box covers before applying power to the signal installation.
10. Terminate conduits entering the top of enclosures with a conduit-sealing hub or threaded boss such as meter hub. Install a grounding bushing on all metal conduits not connected to conduit-sealing hub or threaded boss. Bond the grounding bushing to the ground bus with a bonding jumper. Seal all conduits entering enclosures with duct seal or expanding foam. Do not use silicone to seal conduit ends.
11. For all conduits, ensure the burial depth is a minimum of 18". Ensure the minimum burial depth for conduit placed under a roadway is 24".



SIGNAL CONTROLLER SIDE VIEW

See TS-CF standard for conduit and grounding requirements. See layout sheets for ground box locations and any additional conduits that are required.

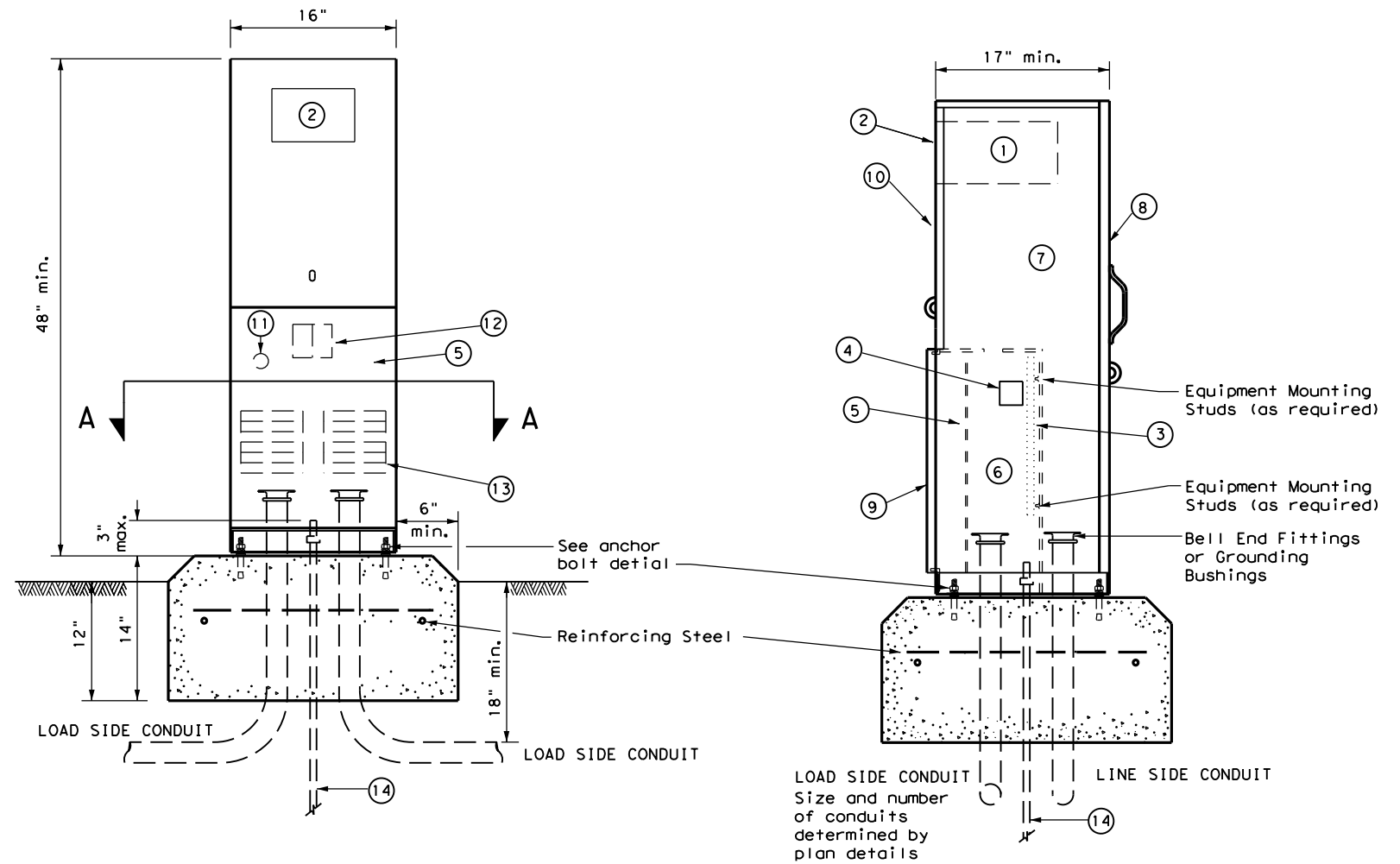
		Texas Department of Transportation		Traffic Operations Division Standard	
<h2>ELECTRICAL DETAILS TYPICAL TRAFFIC SIGNAL SYSTEM DETAILS</h2> <h3>ED(8) - 14</h3>					
FILE:	ed8-14.dgn	DN:	TxDOT	CK:	TxDOT
© TxDOT	October 2014	CONT:	SECT:	JOB:	HIGHWAY:
REVISIONS					
		DIST:	COUNTY:	SHEET NO.	
				107	

DATE:
FILE:

DISCLAIMER: The use of this standard is governed by the "Texas Engineering Practice Act". No warranty of any kind is made by TxDOT for any purpose whatsoever. TxDOT assumes no responsibility for the conversion of this standard to other formats or for incorrect results or damages resulting from its use.

PEDESTAL SERVICE NOTES

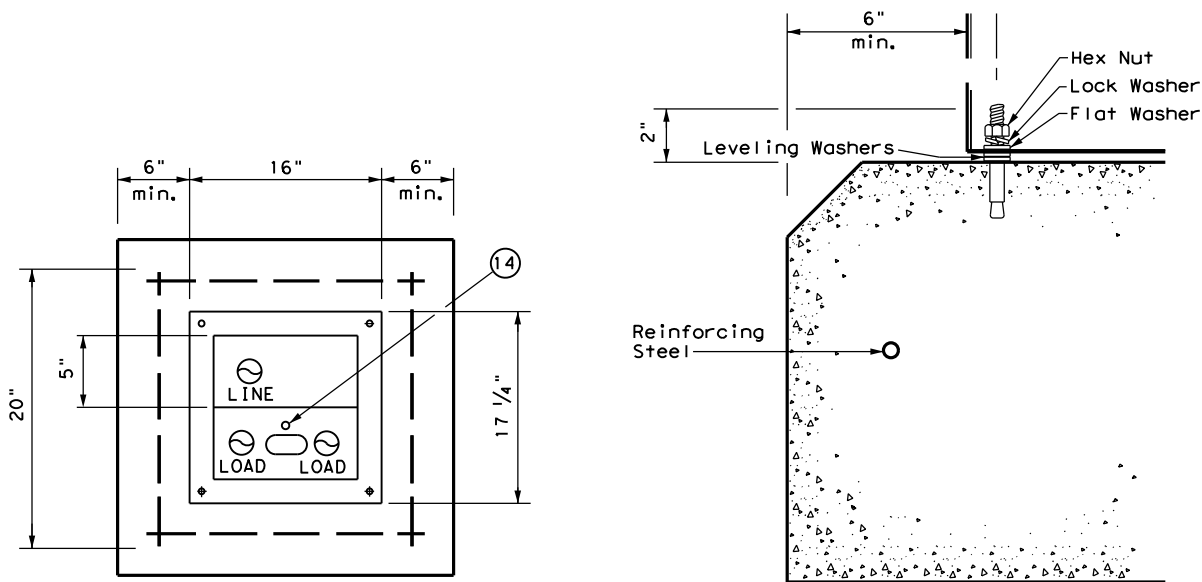
1. Manufacture pedestal electrical services in accordance with Departmental Material Specifications (DMS) 11080 "Electrical Services", 11085 "Electrical Services-Pedestal (PS)" and Item 628 "Electrical Services." Provide pedestal electrical services as listed on the Material Producers List (MPL) on the Department's web site under "Roadway Illumination and Electrical Supplies," Item 628. Ensure all mounting hardware and installation details of services meet utility company specifications. Contact the local utility company for approval of pedestal details prior to installing the electrical pedestal service. Submit any changes required by the utility company prior to manufacturing the pedestal enclosure.
2. When a meter socket is required, provide a socket with a minimum 100 amp rating that complies with local utility requirements.
3. Provide Class A or C concrete for pedestal service foundations in accordance with Item 420, "Concrete Substructures," except that concrete will not be paid for directly but is considered subsidiary to Item 628.
4. Provide #4 reinforcing steel for foundations in accordance with Item 440, "Reinforcement for Concrete."
5. Install 1/2 in. X 2 1/16 in. minimum length concrete single expansion type anchors for mounting pedestal enclosure to foundation. Anchor location to match mounting holes in each corner of enclosure. Secure each of the four corners of the pedestal enclosure to the anchors in the foundation with a 1/2 in. galvanized or stainless steel machine thread bolt, a properly sized locknut and a flat washer.
6. Finish top of concrete foundation in a neat and workmanlike manner. If leveling washers are used, ensure no more than 1/8 in. gap at any corner. Do not exceed a maximum dip or rise in the foundation of 1/8 in. per foot. When properly installed, ensure the top of the service enclosure is level front to back and side to side within 1/4 in. Repair rocking or movement of the service enclosure at no additional cost to the department.
7. Do not use liquidtight flexible metal conduit (LFMC) on pedestal type services.
8. Ensure all elbows in the foundation are sized as per utility provider's conduit requirements for underground conduit and feeders. PVC extensions may be installed provided the ends of the rigid metal conduits are more than 2 in. below the top of the concrete foundation. Where extension conduits are metal, grounding bushings must be installed with a bonding jumper properly terminated.



FRONT VIEW

SIDE VIEW

TYPE C shown, TYPE A similar except that TYPE A shall have individual circuit breakers (CB) mounted on an equipment mounting panel. CB Handles shall protrude through hinged deadfront trim.



SECTION A-A

ANCHOR BOLT DETAIL

LEGEND

1	Meter Socket, (when required)
2	Meter Socket Window, (when required)
3	Equipment Mounting Panel
4	Photo Electric Control Window, (When required)
5	Hinged Deadfront Trim
6	Load Side Conduit Trim
7	Line Side Conduit Area
8	Utility Access Door, with handle
9	Pedestal Door
10	Hinged Meter Access
11	Control Station (H-O-A Switch)
12	Main Disconnect
13	Branch Circuit Breakers
14	Copper Clad Ground Rod - 5/8" X 10'

		Traffic Operations Division Standard	
ELECTRICAL DETAILS ELECTRICAL SERVICE SUPPORT PEDESTAL SERVICE TYPE PS			
ED(9) - 14			
FILE: ed9-14.dgn	DN: TxDOT	CK: TxDOT	DW: TxDOT
© TxDOT October 2014	CONT	SECT	JOB
REVISIONS		HIGHWAY	
DIST		COUNTY	SHEET NO.
		108	

DATE: FILE:

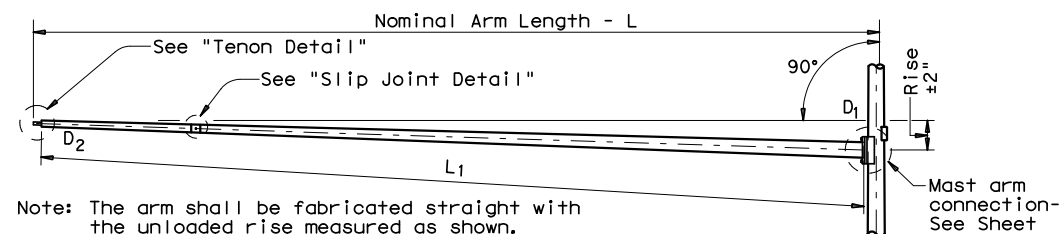
DISCLAIMER: The use of this standard is governed by the "Texas Engineering Practice Act". No warranty of any kind is made by TxDOT for any purpose whatsoever. TxDOT assumes no responsibility for the conversion of this standard to other formats or for incorrect results or damages resulting from its use.

Arm Length ft.	ROUND POLES					POLYGONAL POLES					Foundation Type
	D _B in.	D ₁₉ in.	D ₂₄ in.	D ₃₀ in.	① thk in.	D _B in.	D ₁₉ in.	D ₂₄ in.	D ₃₀ in.	① thk in.	
20	10.5	7.8	7.1	6.3	.179	11.5	8.5	7.7	6.8	.179	30-A
24	11.0	8.3	7.6	6.8	.179	12.0	9.0	8.2	7.3	.179	30-A
28	11.5	8.8	8.1	7.3	.179	12.5	9.5	8.7	7.8	.179	30-A
32	12.5	9.8	9.1	8.3	.179	12.0	9.0	8.2	7.3	.239	30-A
36	12.0	9.3	8.6	7.8	.239	12.5	9.5	8.7	7.8	.239	36-A
40	12.0	9.3	8.6	7.8	.239	13.5	10.5	9.7	8.8	.239	36-A
44	12.5	9.8	9.1	8.3	.239	14.0	11.0	10.2	9.3	.239	36-A
48	13.0	10.3	9.6	8.8	.239	15.0	12.0	11.2	10.3	.239	36-A

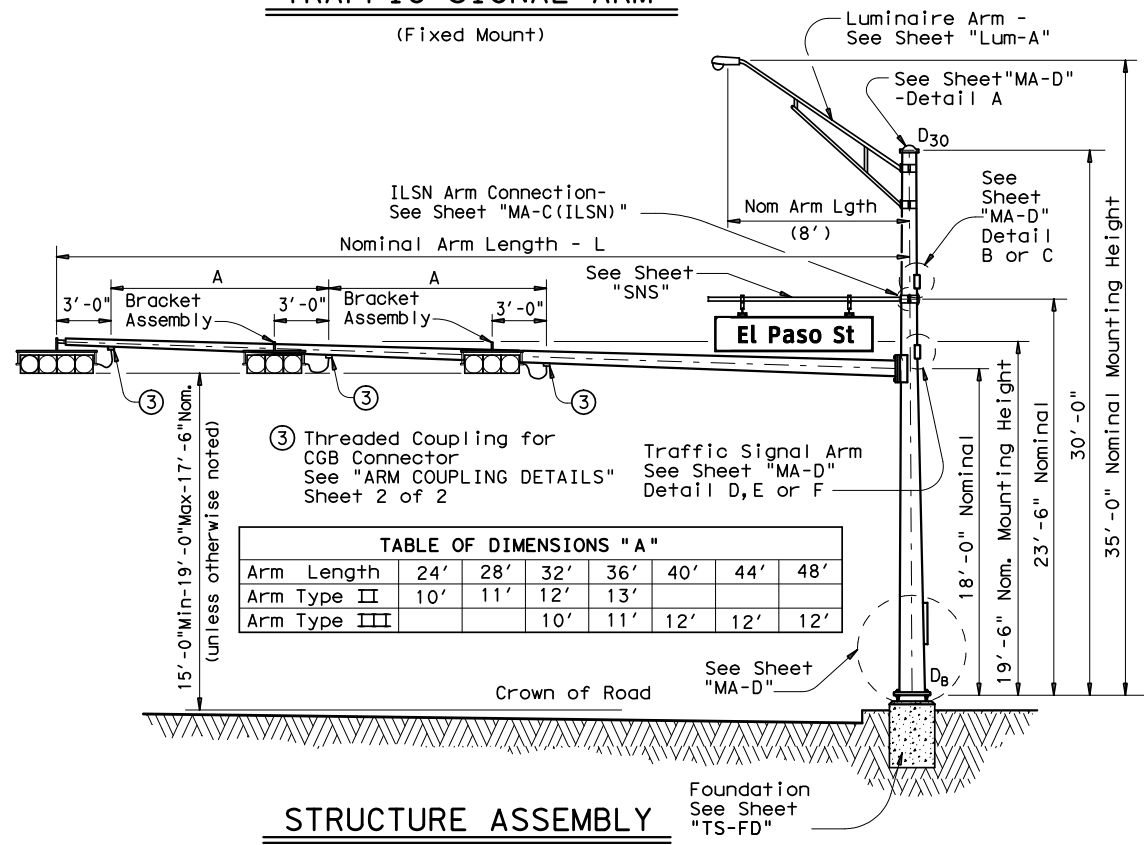
Arm Length ft.	ROUND ARMS					POLYGONAL ARMS				
	L ₁ ft.	D ₁ in.	D ₂ in.	① thk in.	Rise	L ₁ ft.	D ₁ in.	② D ₂ in.	① thk in.	Rise
20	19.1	6.5	3.8	.179	1'-9"	19.1	7.0	3.5	.179	1'-8"
24	23.1	7.5	4.3	.179	1'-10"	23.1	7.5	3.5	.179	1'-9"
28	27.1	8.0	4.2	.179	1'-11"	27.1	8.0	3.5	.179	1'-10"
32	31.0	9.0	4.7	.179	2'-1"	31.0	9.0	3.5	.179	2'-0"
36	35.0	9.5	4.6	.179	2'-4"	35.0	10.0	3.5	.179	2'-1"
40	39.0	9.5	4.1	.239	2'-8"	39.0	9.5	3.5	.239	2'-3"
44	43.0	10.0	4.1	.239	2'-11"	43.0	10.0	3.5	.239	2'-6"
48	47.0	10.5	4.1	.239	3'-4"	47.0	11.0	3.5	.239	2'-9"

D_B = Pole Base O.D.
D₁₉ = Pole Top O.D. with no Luminaire and no ILSN
D₂₄ = Pole Top O.D. with ILSN w/out Luminaire
D₃₀ = Pole Top O.D. with Luminaire
D₁ = Arm Base O.D.
D₂ = Arm End O.D.
L₁ = Shaft Length
L = Nominal Arm Length

- ① Thickness shown are minimums, thicker materials may be used.
- ② D₂ may be increased by up to 1" for polygonal arms.



TRAFFIC SIGNAL ARM
(Fixed Mount)



③ Threaded Coupling for CGB Connector See "ARM COUPLING DETAILS" Sheet 2 of 2

Arm Length	24'	28'	32'	36'	40'	44'	48'
Arm Type II	10'	11'	12'	13'			
Arm Type III			10'	11'	12'	12'	12'

STRUCTURE ASSEMBLY

SHIPPING PARTS LIST

Ship each pole with the following attached: enlarged hand hole, pole cap, fixed-arm connection bolts and washers and any additional hardware listed in the table.

Nominal Arm Length ft.	30' Poles With Luminaire		24' Poles With ILSN		19' Poles With No Luminaire and No ILSN	
	Designation	Quantity	Designation	Quantity	Designation	Quantity
20	20L-80		20S-80		20-80	
24	24L-80		24S-80		24-80	
28	28L-80		28S-80		28-80	
32	32L-80		32S-80		32-80	
36	36L-80	2	36S-80		36-80	
40	40L-80		40S-80		40-80	
44	44L-80		44S-80		44-80	
48	48L-80		48S-80		48-80	

Traffic Signal Arms (1 per Pole) Ship each arm with the listed equipment attached

Nominal Arm Length ft.	Type I Arm (1 Signal)		Type II Arm (2 Signals)		Type III Arm (3 Signals)	
	Designation	Quantity	Designation	Quantity	Designation	Quantity
20	20I-80					
24	24I-80		24II-80			
28	28I-80		28II-80			
32			32II-80		32III-80	
36			36II-80	2	36III-80	
40					40III-80	
44					44III-80	
48					48III-80	

Luminaire Arms (1 per 30' pole)

Nominal Arm Length	Quantity
8' Arm	2

ILSN Arm (Max. 2 per pole) Ship with clamps, bolts and washers

Nominal Arm Length	Quantity
7' Arm	
9' Arm	

Anchor Bolt Assemblies (1 per pole)

Anchor Bolt Diameter	Anchor Bolt Length	Quantity
1 1/2"	3'-4"	
1 3/4"	3'-10"	2

Each anchor bolt assembly consists of the following: Top and Bottom templates, 4 anchor bolts, 8 nuts, 8 flat washers, and 4 nut anchor devices (Type 2) per Standard Drawing "TS-FD".

Templates may be removed for shipment.

---NOT FOR CONSTRUCTION---

THIS DOCUMENT HAS BEEN RELEASED FOR THE PURPOSE OF INTERIM REVIEW UNDER THE AUTHORITY OF ZEGEYE Z. KEBEDE, P.E. 121726 IT IS NOT TO BE USED FOR CONSTRUCTION PURPOSES. 05/05/2021

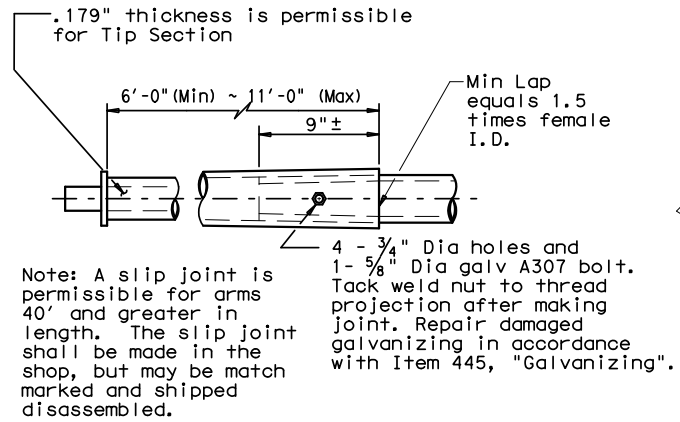
---NOT FOR CONSTRUCTION---

Texas Department of Transportation
Traffic Operations Division
TRAFFIC SIGNAL SUPPORT STRUCTURES
SINGLE MAST ARM ASSEMBLY
(80 MPH WIND ZONE)
SMA-80(1)-12

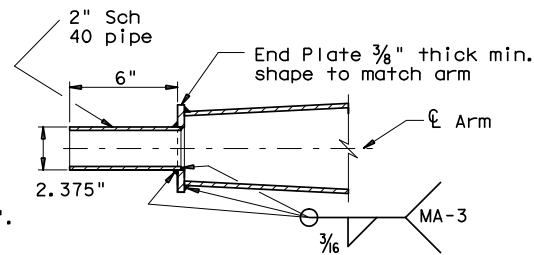
© TxDOT August 1995	DN: MS	CK: JSY	DW: MMF	CK: JSY
REVISIONS	CONT	SECT	JOB	HIGHWAY
5-96				
11-99				
1-12	DIST	COUNTY		SHEET NO.
				109

DATE:
FILE:

DISCLAIMER: The use of this standard is governed by the "Texas Engineering Practice Act". No warranty of any kind is made by TxDOT for any purpose whatsoever. TxDOT assumes no responsibility for the conversion of this standard to other formats or for incorrect results or damages resulting from its use.



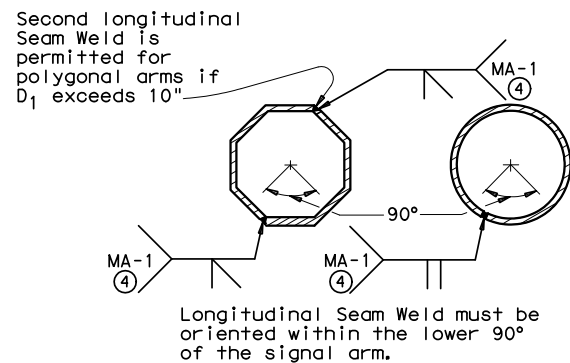
SLIP JOINT DETAIL



TENON DETAIL

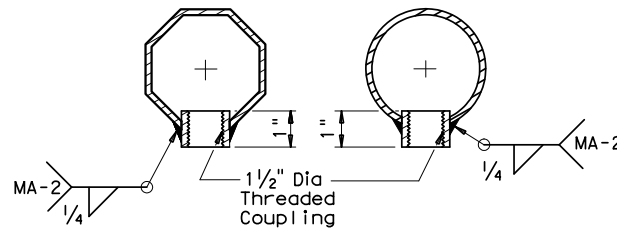
Stainless steel bands (or Cables) and cast bracket as in "Astro-Brac", "Sky Bracket" or "Easy Bracket" with 1 1/2" Dia Threaded Coupling.

BRACKET ASSEMBLY



ARM WELD DETAIL

④ 60% Min. penetration
100% penetration within
6" of circumferential
base welds.



ARM COUPLING DETAILS

VIBRATION WARNING

Mast Arms of SMA and DMA structures and clamp-on Arms of LMA structures of approximately 40 ft or longer are subject to harmonic vertical vibrations in light wind conditions due to the aeroelastic characteristics of a few of the myriads of possible combinations of the following: signal numbers, weights and positions; existence/solidity of backplates; presence of additional attachments to the arm, such as signs and cameras; arm-wind orientation; and arm-pole stiffness.

Such vibrations may cause fatigue damage to the structure and may lead to galloping in moderate wind conditions which may further damage the structure and alarm the public. Tests have indicated that when wind is blowing toward the back side of signal heads having un-vented backplates attached the probability of unacceptable harmonic vibration and/or galloping is rather high.

If backplates are not required for improved visibility they should not be applied to the signal heads or, if they must be applied, they should be vented as a first and inexpensive measure to mitigate vibrations.

The traffic signal mast arms shall be visually inspected in 5 to 20 mph wind conditions after installation of signal heads and any attachments, including any required backplates. If vertical movements with a total excursion (maximum upward excursion to maximum downward excursion) of more than approximately 8" are observed at the arm tip, a damping plate shall be fitted to the arm. See "Damping Plate Mounting Details" on standard sheet, MA-DPD-10.

This visual inspection shall be repeated after each modification of the structure that could affect its aeroelastic response. Excessive vibrations shall not be allowed to continue for more than two days.

GENERAL NOTES:

Design conforms to 1994 AASHTO Standard Specifications for Structural Supports for Highway Signs, Luminaires, and Traffic Signals and Interim Specifications thereto. Design Wind Speed equals 80 mph plus a 1.3 gust factor.

Poles are designed to support one 8'-0" luminaire arm, one 9'-0" internally lighted street name sign and one traffic signal arm with a length as tabulated. The specified luminaire load applied at the end of the luminaire arm equals 60 lbs vertical dead load plus the horizontal wind load on an effective projected area of 1.6 sq ft. The specified internally lighted street name sign load applied 4.5 ft from the centerline of the pole equals 85 lbs vertical dead load plus horizontal wind load on an effective projected area of 11.5 sq ft. The specified signal load applied at the end of the traffic signal arm equals 180 lbs vertical dead load plus the horizontal wind load on an effective projected area of 32.4 sq ft (actual area times drag coefficient).

See Standard Sheet "MA-D" for pole details, "MA-C" for traffic signal arm connection details, "MA-C (ILSN)" for internally lighted street name sign arm connection details, "LUM-A" for luminaire arm and connection details, "SNS" for internally lighted street name sign details, and "TS-FD" for anchor bolt and foundation details. See "MA-C" for material specifications.

Fabrication shall be in accordance with Item 686, "Traffic Signal Pole Assemblies (Steel)" and with the details, dimensions, and weld procedures shown herein. Weld references call for preapproved weld procedures which the Fabricator must obtain prior to fabrication. Materials, fabrication tolerances, and shipping practices shall meet the requirements of this sheet and Item 686, "Traffic Signal Pole Assemblies (Steel)".

Unless otherwise noted, all parts shall be galvanized in accordance with Item 445, "Galvanizing", after fabrication.

Deviation from the details and dimensions shown herein require submission of shop drawings in accordance with Item 441, "Steel Structures". Alternate designs are not acceptable.



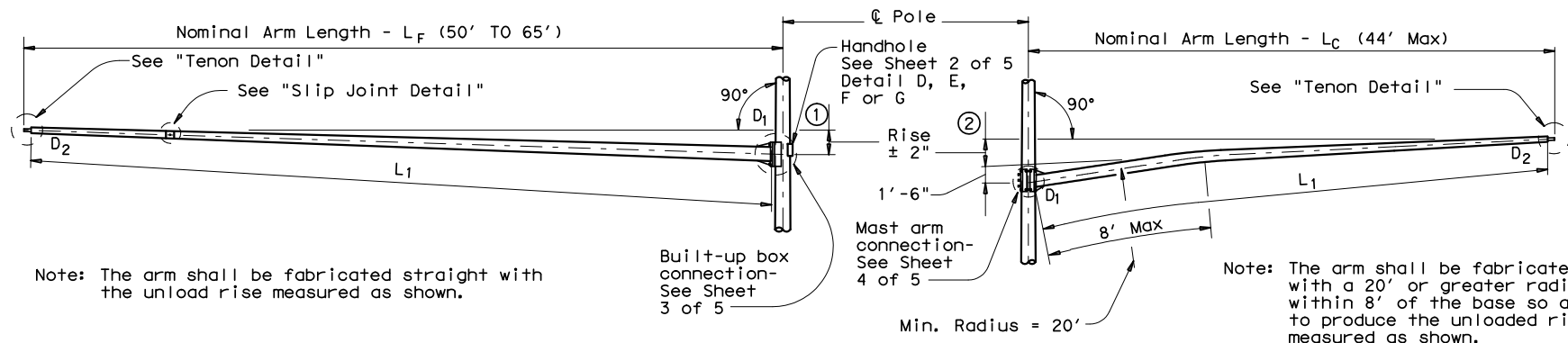
**TRAFFIC SIGNAL
SUPPORT STRUCTURES
SINGLE MAST ARM ASSEMBLY
(80 MPH WIND ZONE)**

SMA-80(2)-12

© TxDOT August 1995	DN: MS	CK: JSY	DW: MMF	CK: JSY
5-96 1-12	REVISIONS			
	CONT	SECT	JOB	HIGHWAY
	DIST	COUNTY		SHEET NO.
				110

DISCLAIMER: The use of this standard is governed by the "Texas Engineering Practice Act". No warranty of any kind is made by TxDOT for any purpose whatsoever. TxDOT assumes no responsibility for damages resulting from its use.

DATE: FILE:

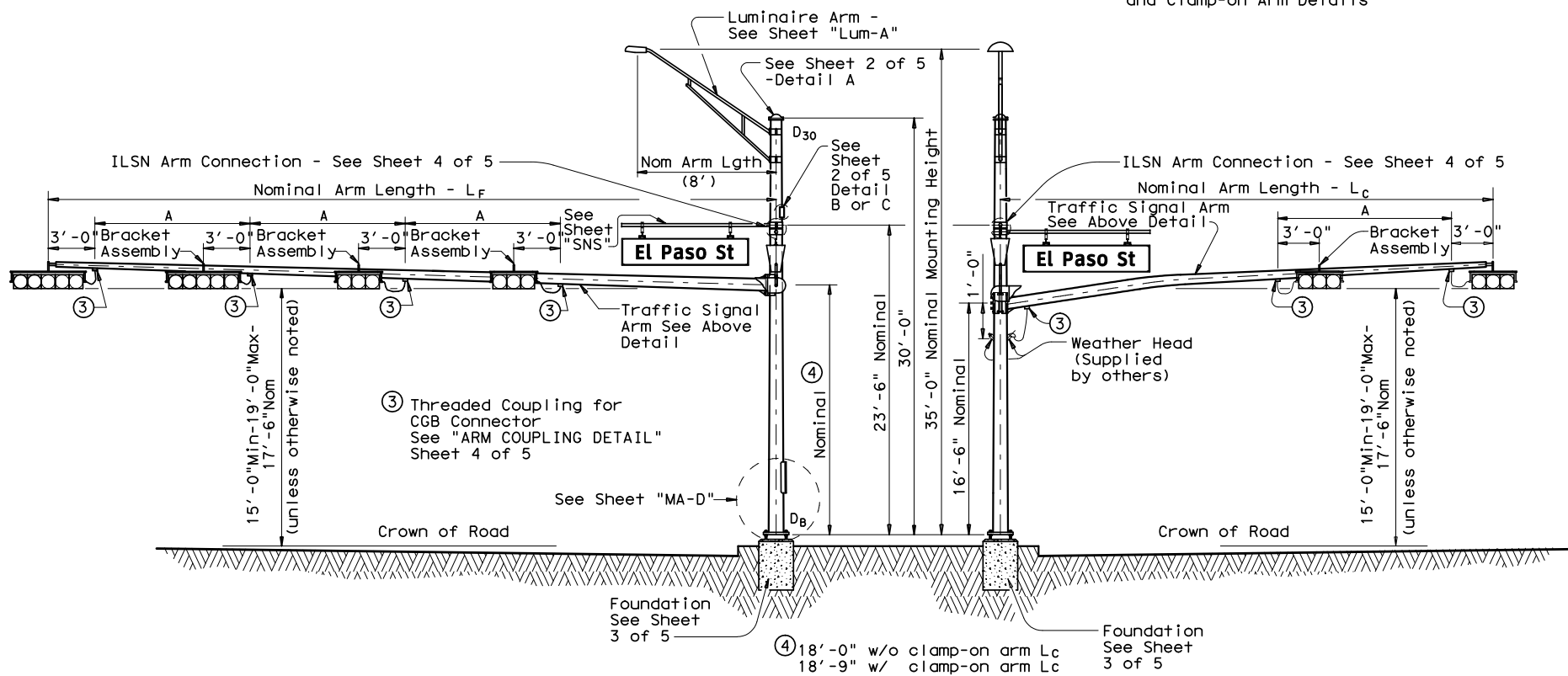


FIXED MOUNT TRAFFIC SIGNAL ARM

① See Sheet 3 of 5 for Arm Rise

CLAMP-ON TRAFFIC SIGNAL ARM (IF REQUIRED)

② See Sheet 4 of 5 for Arm Rise and Clamp-on Arm Details



ELEVATION

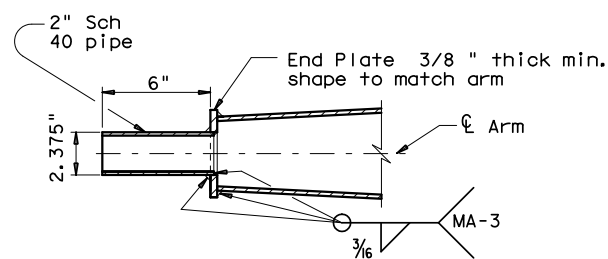
(Showing fixed mount arm)

STRUCTURE ASSEMBLY

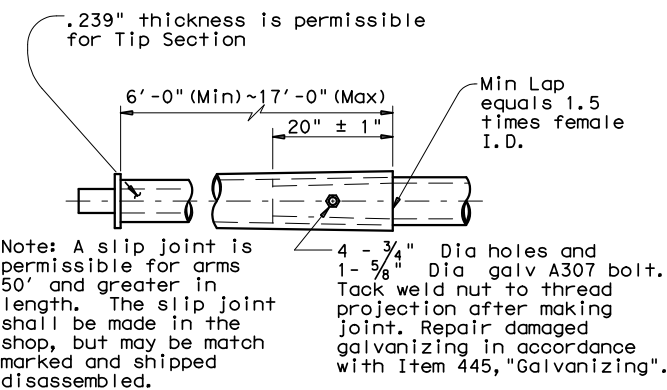
ELEVATION

(Showing clamp-on arm)

TABLE OF DIMENSIONS "A"										
Arm Length	24'	28'	32'	36'	40'	44'	50'	55'	60'	65'
Arm Type II	10'	11'	12'	13'						
Arm Type III			10'	11'	12'	12'				
Arm Type IV							12'	12'	12'	12'



TENON DETAIL



SLIP JOINT DETAIL (FIXED MOUNT ARM)

GENERAL NOTES:

Design conforms to 1994 AASHTO Standard Specifications for Structural Supports for Highway Signs, Luminaires, and Traffic Signals and Interim Specifications thereto. Design Wind Speed can be either 100 mph or 80 mph plus a 1.3 gust factor. If clamp-on traffic signal is required, designs are based on an arm included angle of 90 degrees or more. Angles of less than approximately 75 degrees will require a special design.

Poles are designed to support one 8'-0" luminaire arm, two 9'-0" internally lighted street name (ILSN) signs and two traffic signal arms with limited length combinations.

Each arm with its related attachment is shown below

Arm	Equivalent DL ⑤	WL EPA ⑤⑥
8' Luminaire Arm	Luminaire 60 lbs	1.6 sq ft
9' ILSN Arm	Sign 85 lbs	11.5 sq ft
50' to 65' Fixed Mount Arm	Signal Loads 310 lbs	52 sq ft
Up to 44' Clamp-on Arm	Signal Loads 180 lbs	32.4 sq ft

⑤ Equivalent dead load plus horizontal wind load applied at the end of arm except ILSN arm, which applied 4.5' from the centerline of the pole.

⑥ Effective projected area (actual area times drag coefficient) for the application of horizontal wind load.

Except as noted in Sheet 1 thru 5 of 5, other details not covered shall refer to Standard Sheet "MA-D" for pole details, "LUM-A" for luminaire arm and connection details, "SNS" for internally lighted street name sign details, and "TS-FD" for anchor bolt and foundation details.

Fabrication shall be in accordance with Item 686, "Traffic Signal Pole Assemblies (Steel)" and with the details, dimensions, and weld procedures shown herein. Weld references call for preapproved weld procedures which the Fabricator must obtain prior to fabrication. Material, fabrication tolerances, and shipping practices shall also meet the requirements of this sheet and Item 686, "Traffic Signal Pole Assemblies (Steel)".

Unless otherwise noted, all parts shall be galvanized in accordance with Item 445, "Galvanizing" after fabrication.

Deviations from the details and dimensions shown herein require submission of shop drawings in accordance with the Item 441, "Steel Structures". Alternate designs are not acceptable.

Installation of damping plate for the long mast arm is not recommended.

Provision of the bracket assembly used to support the traffic signal heads shall be under the direction of the Engineer for approval.

Design also conforms to NCHRP Report 412 for fatigue resistance except that there are no stiffeners at the base plate. TxDOT is conducting tests to determine if stiffeners at the base plate will or will not result in optimal performance; depending upon the results of the tests, poles may need a retrofit to ensure optimal fatigue performance.

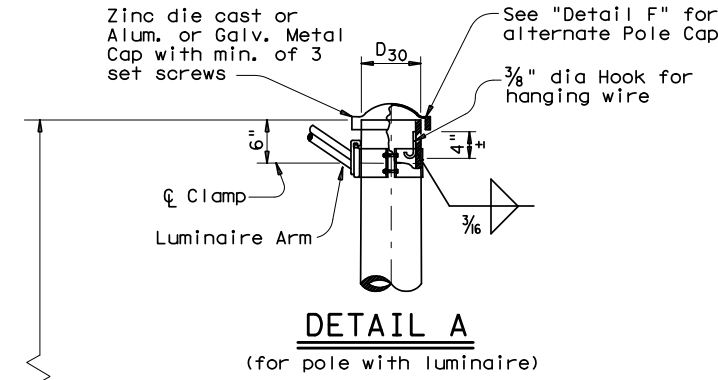
Texas Department of Transportation
Traffic Operations Division

**TRAFFIC SIGNAL
SUPPORT STRUCTURES
LONG MAST ARM ASSEMBLY
(50 TO 65 FT)
(80 AND 100 MPH WIND ZONE)
LMA(1)-12**

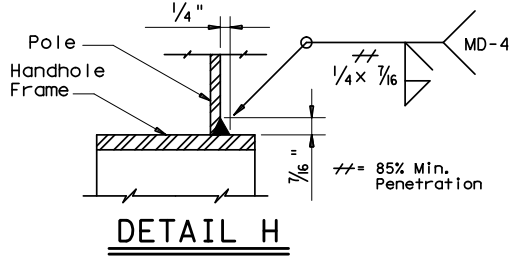
Sheet 1 of 5

© TxDOT July 2000	DN: TxDOT	CK: TxDOT	DW: TxDOT	CK: TxDOT
4-20-01 1-12	REVISIONS	CONT	SECT	JOB
		DIST	COUNTY	SHEET NO.

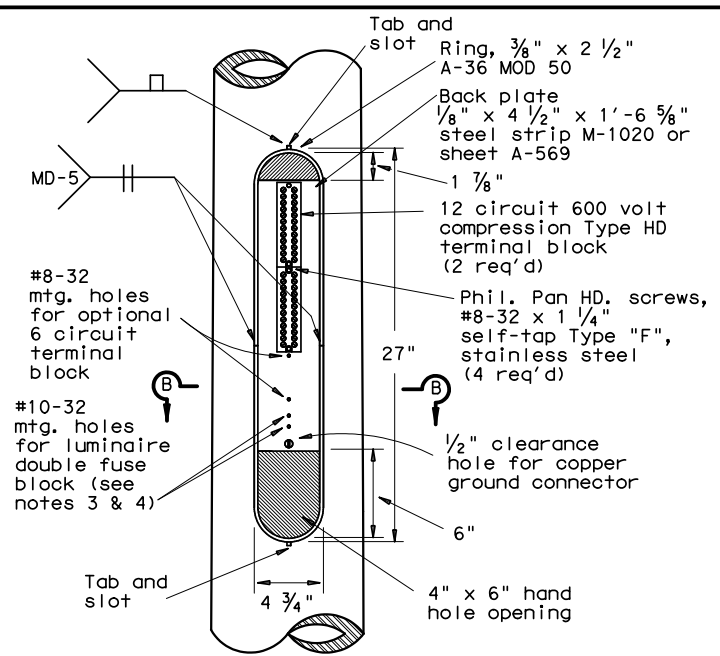
DISCLAIMER: The use of this standard is governed by the "Texas Engineering Practice Act". No warranty of any kind is made by TxDOT for any purpose whatsoever. TxDOT assumes no responsibility for the conversion of this standard to other formats or for incorrect results or damages resulting from its use.



DETAIL A
(for pole with luminaire)



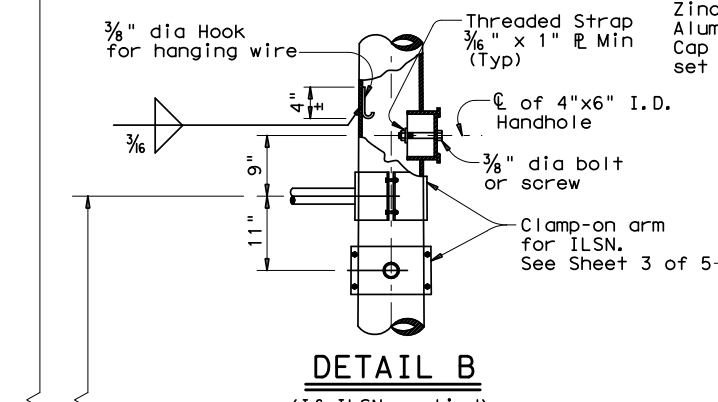
DETAIL H



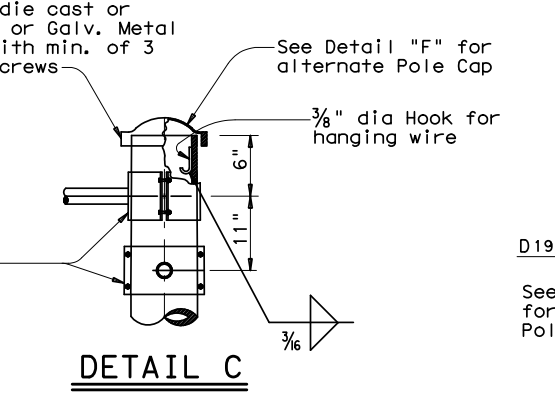
ACCESS COMPARTMENT

MATERIALS	
Round Shafts or Polygonal Shafts ⁽⁷⁾	ASTM A595 Gr. A, A588, A1008 HSLAS Gr. 50 Class 2, A1011 HSLAS Gr. 50 Class 2, A572 Gr. 50 or A1011 SS Gr. 50 ⁽⁸⁾
Plates ⁽⁷⁾	ASTM A36, A588, or A572 Gr. 50
Connection Bolts	ASTM A325, or A449 except where noted
Pin Bolts	ASTM A325
Pipe ⁽⁷⁾	ASTM A53 Gr. B, A501, A1008 HSLAS-F Gr. 50, A1011 HSLAS-F Gr. 50
Misc. Hardware	Galvanized steel or stainless steel or as noted

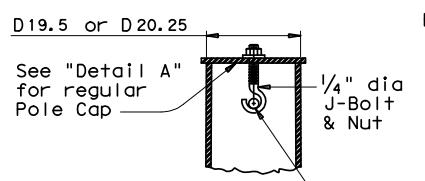
- ⁽⁷⁾ ASTM A572, A1008 HSLAS, A1011 HSLAS, A1008 HSLAS-F, A1011 HSLAS-F, or A1011 SS may have higher yield strengths but shall not have less elongation than the grade indicated.
- ⁽⁸⁾ ASTM A1011 SS Gr. 50 shall also have a minimum elongation of 18 percent in 8 inches or 23 percent in 2 inches. Material thickness in excess of those stipulated under A1011 SS will be acceptable providing the material meets all other A1011 SS requirements and the requirements of this item.



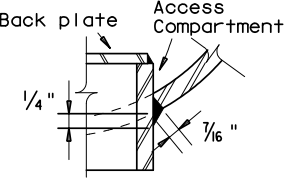
DETAIL B
(If ILSN applied)



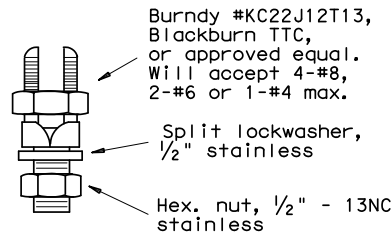
DETAIL C



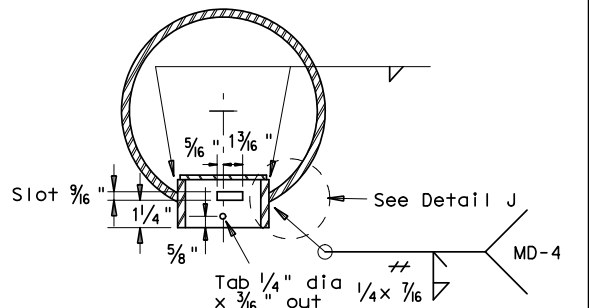
SECTION Y-Y



DETAIL J

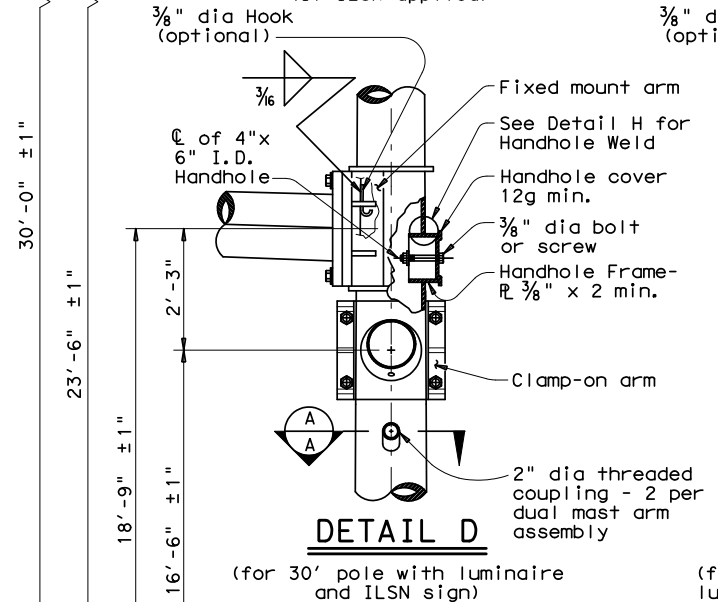


COPPER GROUND CONNECTOR

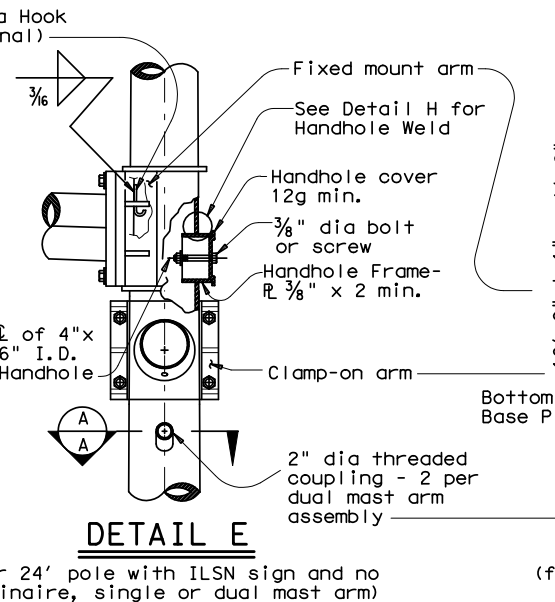


SECTION B-B

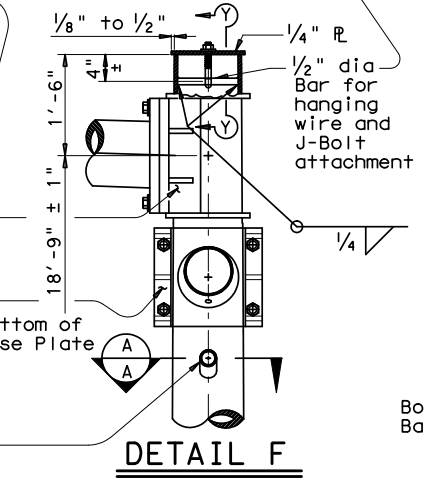
Opening for access compartment shall be no more than 1/16 inch wider than the access compartment itself.



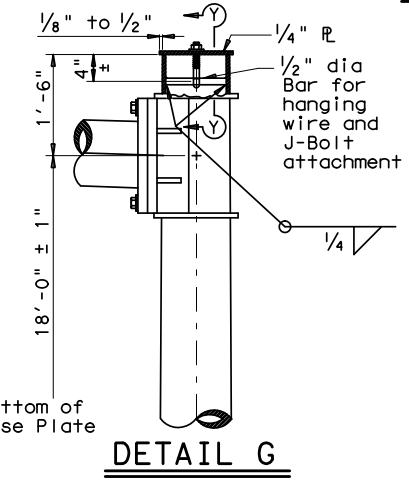
DETAIL D
(for 30' pole with luminaire and ILSN sign)



DETAIL E
(for 24' pole with ILSN sign and no luminaire, single or dual mast arm)



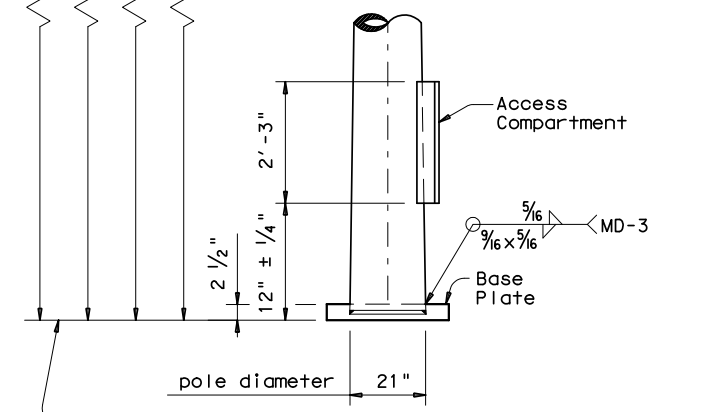
DETAIL F
(for 20.25' pole with no ILSN sign and no luminaire, dual mast arm)



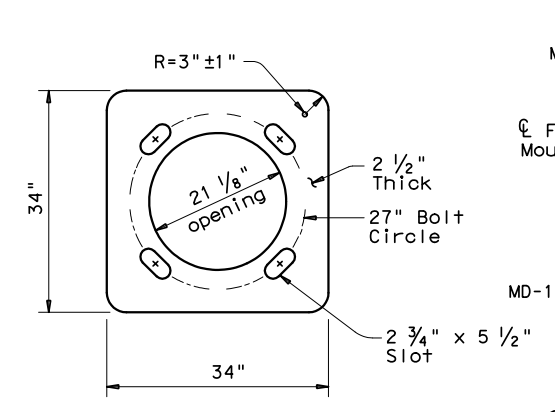
DETAIL G
(for 19.5' pole with no ILSN sign and no luminaire, single mast arm)

ACCESS COMPARTMENT NOTES:

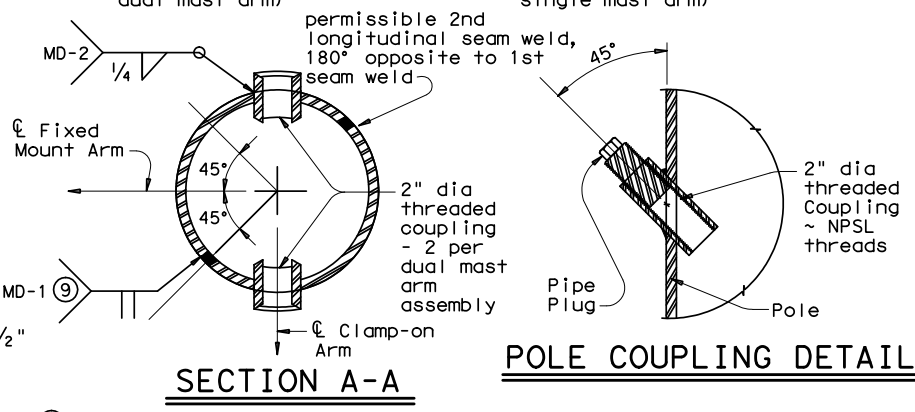
- The cover shall be one piece formed from ABS plastic, shall be a pearl gray color, and shall be suitable for exposure to harsh sunlight and extreme weather. Cover shall latch with two screw latches and shall fit tightly to the enclosure ring to create a rainproof seal. Latch screws shall be 1/4-20 stainless flat socket head screws with tamper proof feature.
- The pole manufacturer shall provide with each pole a separate kit consisting of: one cover with two latching assemblies, two terminal strips (Marathon #985G12CU or approved equal), four #8-32 x 1 1/4" self tapping type "F" stainless steel pan head screws, and one ground connector (Blackburn TTC, Burndy KC22J12T13, or Ilco SSS-5). The traffic signal contractor shall install the kit items in the field.
- The screw hole spacing on the enclosure back plate shall be for two Marathon #985G12 terminal strips, one Marathon #985G06CU terminal strip, and one Bussmann #BM6032B fuse block.
- Install one Bussmann #BM6032B, Littelfuse #L60030M-2C, or Ferraz-Shawmut #30352 fuse block for poles where luminaires are to be installed.



POLE ELEVATION



BASE PLATE



SECTION A-A

POLE COUPLING DETAIL

⁽⁹⁾ Longitudinal seam weld must be oriented within 90° (45° rotation each side) along the fixed mount arm. 60% min penetration required, 100% penetration within 6" of circumferential base weld.

Texas Department of Transportation
Traffic Operations Division

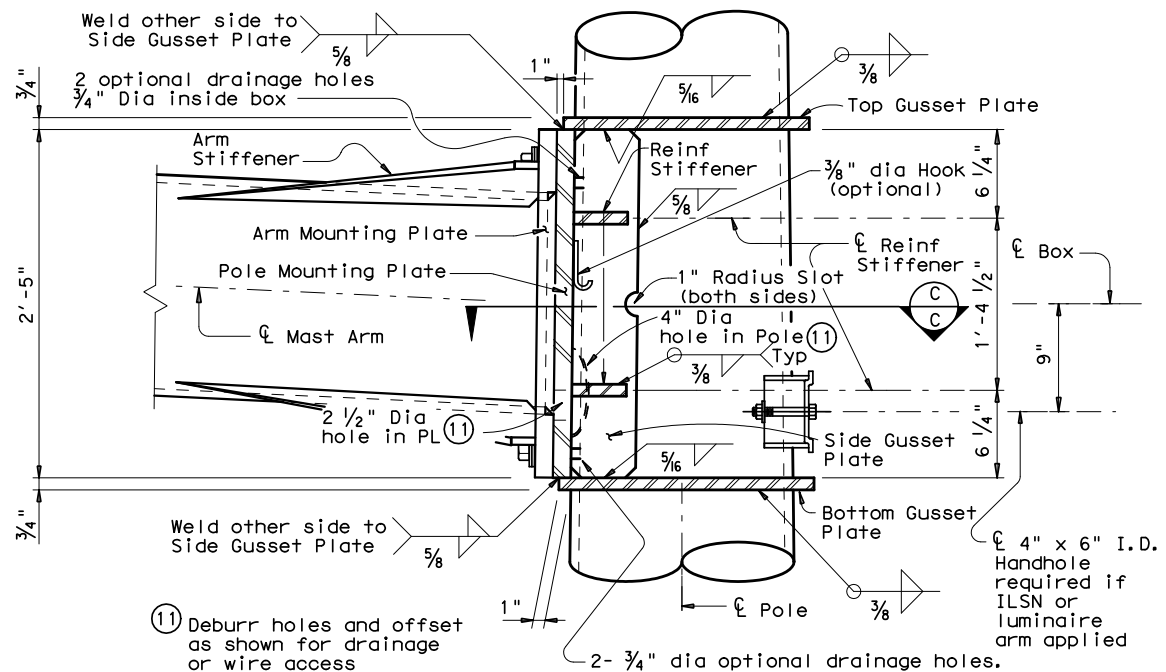
**TRAFFIC SIGNAL SUPPORT STRUCTURES
LONG MAST ARM ASSEMBLY
(50 TO 65 FT)
(80 AND 100 MPH WIND ZONE)
LMA (2) - 12**

Sheet 2 of 5

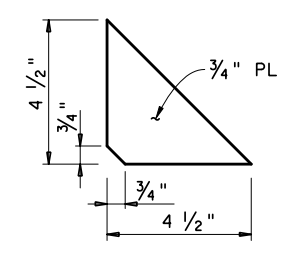
© TxDOT July 2000	DN: JSY	CK: ARC	DW: TGG	CK: JSY
REVISIONS	CONT	SECT	JOB	HIGHWAY
4-20-01 1-12	DIST	COUNTY	SHEET NO. 112	

DATE:
FILE:

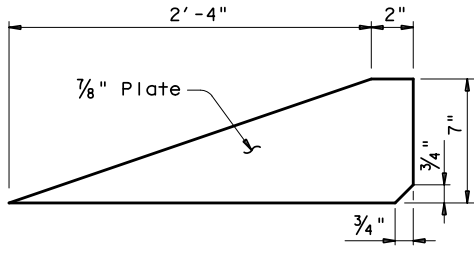
DISCLAIMER: The use of this standard is governed by the "Texas Engineering Practice Act". No warranty of any kind is made by TxDOT for any purpose whatsoever. TxDOT assumes no responsibility for the conversion of this standard to other formats or for incorrect results or damages resulting from its use.



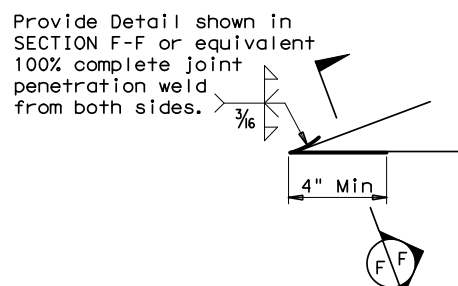
BUILT-UP BOX CONNECTION



REINFORCING STIFFENER



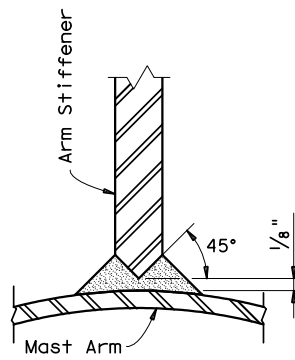
ARM STIFFENER
(Cut to match arm inclination and taper)



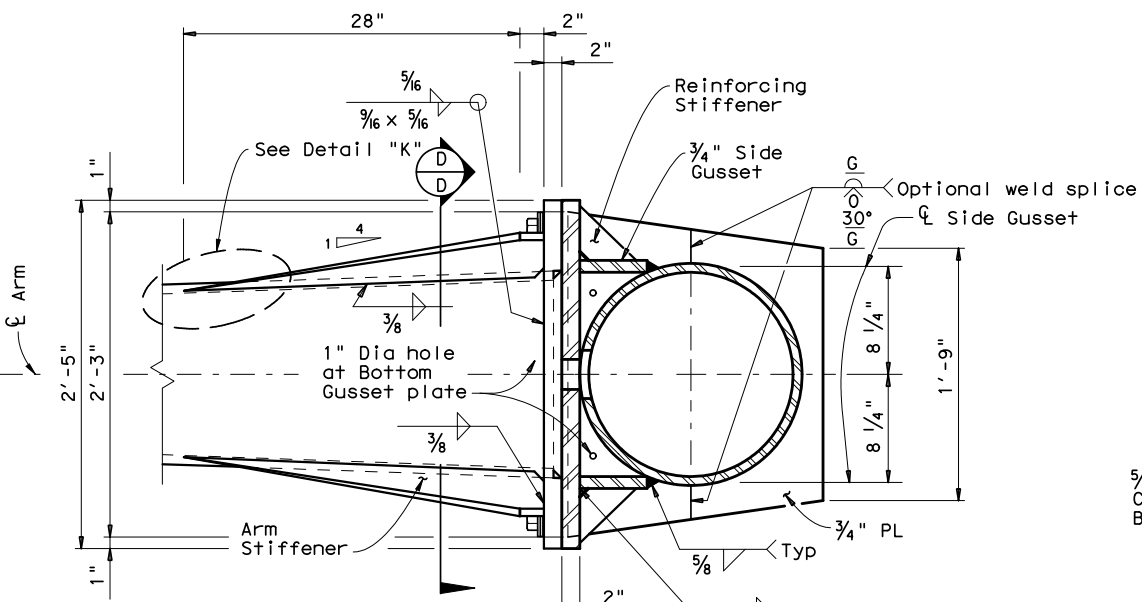
Provide Detail shown in SECTION F-F or equivalent 100% complete joint penetration weld from both sides.

Only 4" length at tip of Arm Stiffener requires a complete joint penetration weld. Smooth weld radius to connect Stiffener. Only a fillet weld is required for the remaining weld length.

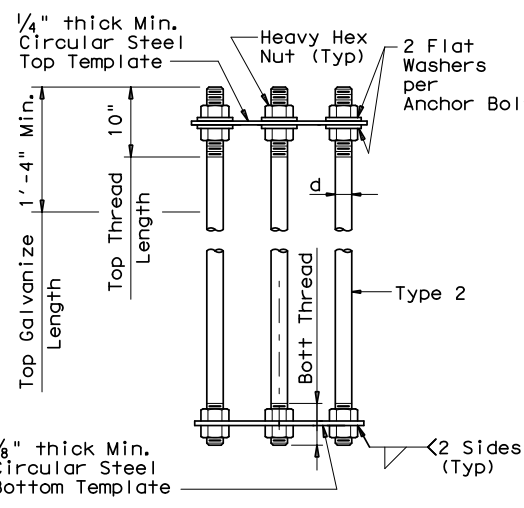
DETAIL "K"



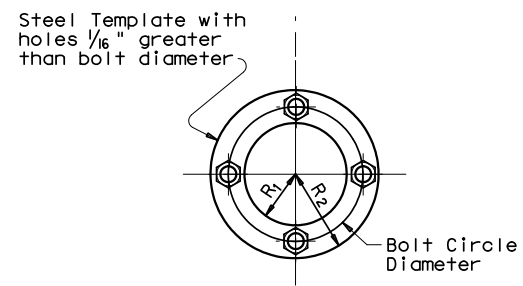
SECTION F-F



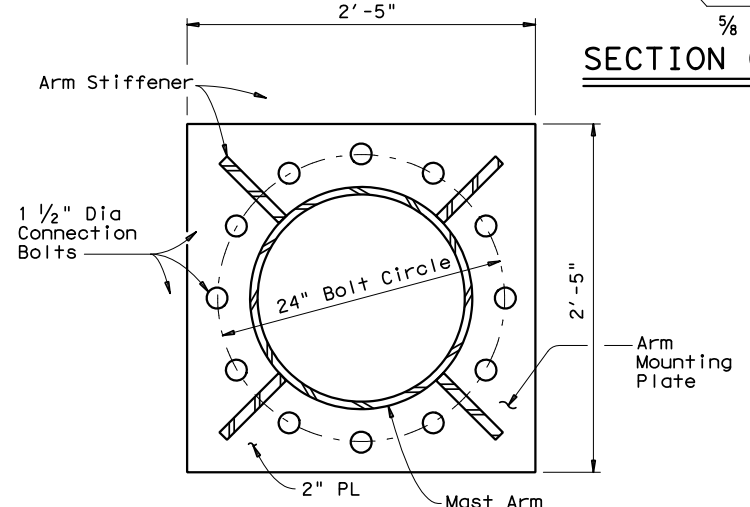
SECTION C-C



ANCHOR BOLT ASSEMBLY (TYPE 2)



TEMPLATE DETAIL



SECTION D-D

FDN TYPE	DRILLED SHAFT DIA	REINFORCING STEEL		DRILLED SHAFT LENGTH-ft (16), (17), (18)			ANCHOR BOLT DESIGN (14)			FOUNDATION DESIGN LOAD (15)		TYPICAL APPLICATION	
		VERT BARS	SPIRAL & PITCH	TEXAS CONE PENETROMETER N blows/ft			ANCHOR BOLT DIA	Fy (Ksi)	BOLT CIR DIA	ANCHOR TYPE	MOMENT K-ft		SHEAR Kips
				10	15	40							
48-A	48"	20 #9	#4 at 6"	21.9	19.5	14.7	2 1/2"	55	27"	2	490	10	50' to 65' Mast arm assembly.

SEE SHEET "TS-FD" FOR ADDITIONAL DETAILS.

- (14) Anchor bolt design develops the foundation capacity given under Foundation Design Loads.
- (15) Foundation Design Loads are the allowable moments and shears at the base of the structure.
- (16) Field Penetrometer readings at a depth of approximately 3 to 5 feet may be used to adjust shaft lengths.
- (17) If rock is encountered, the Drilled Shaft shall extend a minimum of two diameters into solid rock.
- (18) Decimal lengths in Design Table are to allow interpolation for other penetrometer values. Round to nearest foot for entry into Summary Table.

Fixed Mount Arm L F	ROUND POLES (13)					Foundation Type
	D _B	D _{19.5} or D _{20.25}	D ₂₄	D ₃₀	(12)thk	
ft.	in.	in.	in.	in.	in.	
50', 55', 60', 65'	21.0	18.2	17.6	16.8	.3125	48-A

Fixed Mount Arm L F	ROUND ARMS (13)				
	L ₁	D ₁	D ₂	(12)thk	Rise
ft.	ft.	in.	in.	in.	
50	49	18.5	11.7	.3125	3'- 3"
55	54	18.5	11.0	.3125	3'- 7"
60	59	18.5	10.3	.3125	3'-11"
65	64	18.5	9.6	.3125	4'- 4"

- D_B = Pole Base O.D.
 - D_{19.5} = Pole Top O.D. with no Luminaire and no ILSN (single mast arm)
 - D_{20.25} = Pole Top O.D. with no Luminaire and no ILSN (dual mast arm)
 - D₂₄ = Pole Top O.D. with ILSN w/out Luminaire
 - D₃₀ = Pole Top O.D. with Luminaire
 - D₁ = Arm Base O.D.
 - D₂ = Arm End O.D.
 - L₁ = Shaft Length
 - L F = Fixed Arm Length
- (12) Thickness shown is minimum, thicker materials may be used.
 - (13) Shaft profile 16-sided or 18-sided is considered to be equivalent to round section.

GENERAL NOTES:

Built-up Box Connection: For the welded arm-to-pole connection as a built-up box configuration illustrated here is an example only, fabricators are required to submit a shop drawing of box connection for approval. The drawing shall specify the details of each box element, welds of arm-to-pole connection, arm-to-plate socket connection, and arm rise creation. Specify the proper location of drain holes along the pole. 2 1/2" dia hole in the pole mounting plate and 4" dia hole in the pole need to be aligned for wiring access or drainage. Arm stiffeners cut to match arm inclination and taper shall also be included.

The deviation from flat for either arm or pole mounting plate shall not exceed 3/32 in., which is measured along the center of mounting plate to a radial distance of 13.5 in. The deformed-from-flat connection between arm and pole mounting plates shall not be allowed if the center of both mounting plates cannot contact directly.

Fixed mount details are used for single mast arm assemblies and for the first arm on dual mast arm assemblies.

ANCHOR BOLT & TEMPLATE SIZE						
Bolt Dia in.	Length #	Top Thread	Bottom Thread	Bolt Circle	R ₂	R ₁
2 1/2"	5'-2"	10"	6 1/2"	27"	16"	11"

*Min dimension given, longer bolts are acceptable.

Texas Department of Transportation
Traffic Operations Division

**TRAFFIC SIGNAL SUPPORT STRUCTURES
LONG MAST ARM ASSEMBLY
(50 TO 65 FT)
(80 AND 100 MPH WIND ZONE)**

Sheet 3 of 5 **LMA (3) -12**

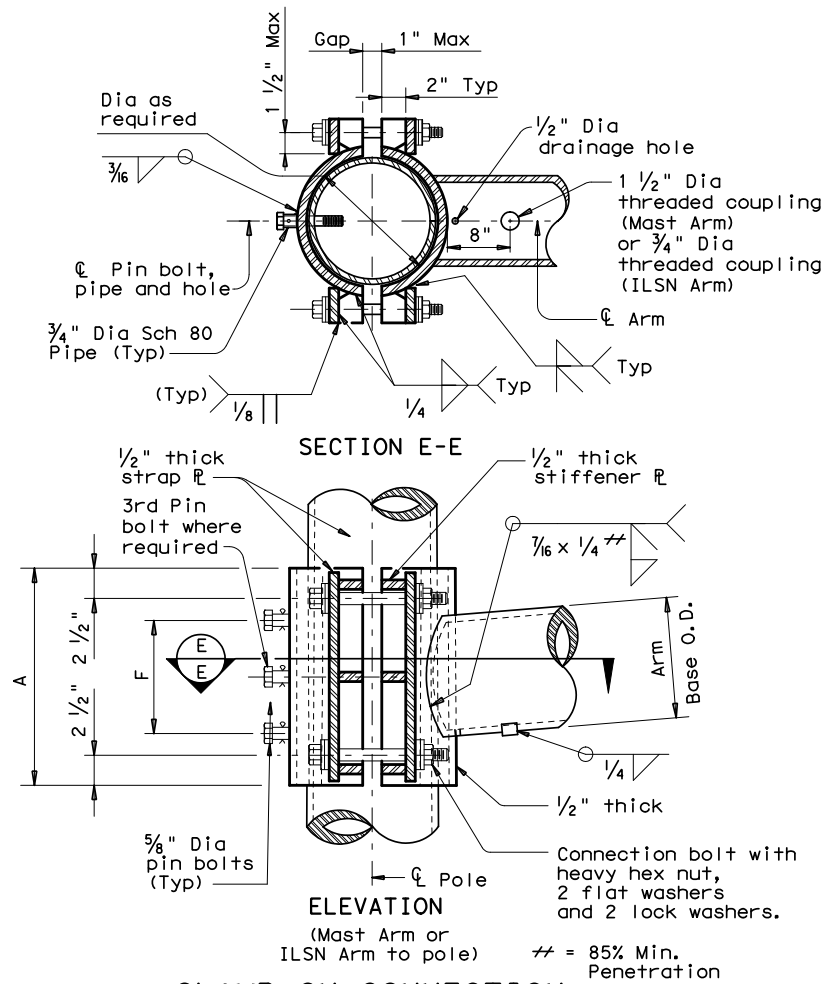
© TxDOT July 2000
REVISIONS

DN: JSY	CK: ARC	DW: TGG	CK: JSY
CONT	SECT	JOB	HIGHWAY
DIST	COUNTY	SHEET NO.	

113

DATE: FILE:

DISCLAIMER: The use of this standard is governed by the "Texas Engineering Practice Act". No warranty of any kind is made by TxDOT for any purpose whatsoever. TxDOT assumes no responsibility for the conversion of this standard to other formats or for incorrect results or damages resulting from its use.



CLAMP-ON CONNECTION

80 MPH WIND											
Clamp-on Arm Lc	ROUND ARMS					POLYGONAL ARMS					
	L ₁	D ₁	D ₂	thk (12)	Rise	L ₁	D ₁	D ₂	thk (12)	Rise	
ft.	ft.	in.	in.	in.		ft.	in.	in.	in.		
20	19.1	6.5	3.8	.179	1'-9"	19.1	7.0	3.5	.179	1'-8"	
24	23.1	7.5	4.3	.179	1'-10"	23.1	7.5	3.5	.179	1'-9"	
28	27.1	8.0	4.2	.179	1'-11"	27.1	8.0	3.5	.179	1'-10"	
32	31.0	9.0	4.7	.179	2'-0"	31.0	9.0	3.5	.179	2'-0"	
36	35.0	9.5	4.6	.239	2'-4"	35.0	10.0	3.5	.239	2'-1"	
40	39.0	9.5	4.1	.239	2'-8"	39.0	9.5	3.5	.239	2'-3"	
44	43.0	10.0	4.1	.239	2'-11"	43.0	10.0	3.5	.239	2'-6"	

100 MPH WIND											
Clamp-on Arm Lc	ROUND ARMS					POLYGONAL ARMS					
	L ₁	D ₁	D ₂	thk (12)	Rise	L ₁	D ₁	D ₂	thk (12)	Rise	
ft.	ft.	in.	in.	in.		ft.	in.	in.	in.		
20	19.1	8.0	5.3	.179	1'-8"	19.1	8.0	3.5	.179	1'-7"	
24	23.1	9.0	5.8	.179	1'-9"	23.1	9.0	3.5	.179	1'-8"	
28	27.1	9.5	5.7	.179	1'-10"	27.1	10.0	3.5	.179	1'-9"	
32	31.0	9.5	5.2	.239	1'-11"	31.0	9.5	3.5	.239	1'-10"	
36	35.0	10.0	5.1	.239	2'-0"	35.0	10.0	3.5	.239	1'-11"	
40	39.0	10.5	5.1	.239	2'-3"	39.0	11.0	3.5	.239	2'-1"	
44	43.0	11.0	5.1	.239	2'-8"	43.0	11.5	4.0	.239	2'-3"	

D₁ = Arm Base O.D.
D₂ = Arm End O.D.
L₁ = Shaft Length
Lc = Clamp-on Arm Length

(12) Thickness shown is minimum, thicker materials may be used.

CLAMP-ON ARM CONNECTION					
ILSN Arm Size		A	F	4 Conn. Bolts	5/8" Dia. Pin Bolts
Sch 40 pipe Dia	Thick				
in.	in.	in.	in.	in.	ea
3	.216	10	4	3/4	2

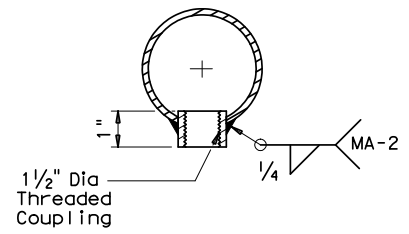
Mast Arm Size		A	F	4 Conn. Bolts	5/8" Dia. Pin Bolts
Base Dia	Thick				
in.	in.	in.	in.	in.	ea
6.5	.179	12	6	1	2
7.5	.179	14	8	1	2
8.0	.179	14	8	1	2
9.0	.179	16	10	1	2
9.5	.179	18	12	1 1/4	3
9.5	.239	18	12	1 1/4	3
10.0	.239	18	12	1 1/4	3
10.5	.239	18	12	1 1/4	3
11.0	.239	18	12	1 1/4	3
11.5	.239	18	12	1 1/4	3

GENERAL NOTES:

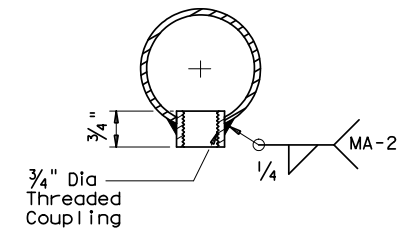
Clamp-on details are used for the second arm on dual mast arm assemblies or ILSN arm support. For a clamp-on mast arm, a maximum 1 1/2" wide vertical slotted hole may be cut in the front clamp plate to facilitate drainage during galvanizing. The slot shall be centered behind the arm and shall be no longer than the arm diameter minus 1". For an ILSN arm, a 1 1/2" diameter hole shall be cut in the front clamp plate for wire access. A matched hole shall be field drilled through the pole to provide wire access after arm is oriented. Deburr both holes.

Where duplicate parts occur on a detail, welds shown for part shall apply to all similar parts on the detail.

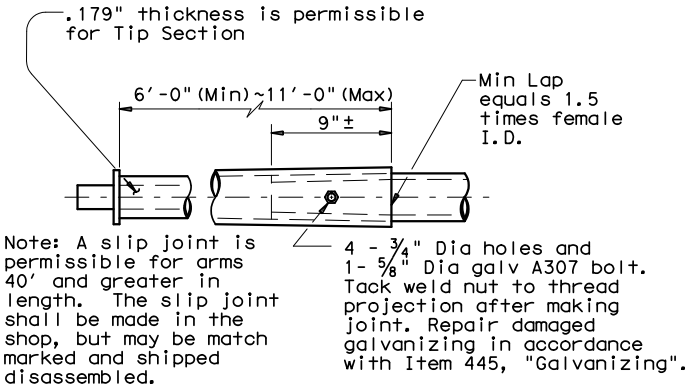
Pin bolts are required to prevent rotation of clamp-on arms under design wind forces. Pin bolts shall be ASTM A325 with threads excluded from the shear plane. Pin bolt and 3/4" diameter pipe shall have 3/16" diameter holes for a 1/8" diameter galvanized cotter pin. Back clamp plate shall be furnished with a 3/4" diameter hole for each pin bolt. An 1/8" diameter hole for each pin bolt shall be field drilled through the pole after arm orientations have been approved by the Engineer.



ARM COUPLING DETAIL



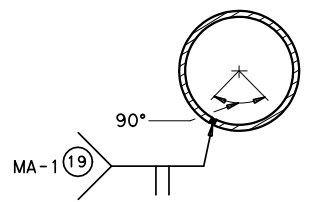
ILSN ARM COUPLING DETAIL



SLIP JOINT DETAIL (CLAMP-ON ARM)

Stainless steel bands (or Cables) and cast bracket as in "Astro-Brac", "Sky Bracket" or "Easy Bracket" with 1 1/2" Dia Threaded Coupling.

BRACKET ASSEMBLY



ARM WELD DETAIL

(19) Longitudinal Seam Weld must be oriented within the lower 90° of the signal arm. 60% Min penetration 100% penetration within 6" of circumferential base welds.

Texas Department of Transportation
Traffic Operations Division

**TRAFFIC SIGNAL SUPPORT STRUCTURES
LONG MAST ARM ASSEMBLY
(50 TO 65 FT)
(80 AND 100 MPH WIND ZONE)**

Sheet 4 of 5 **LMA (4) -12**

© TxDOT November 2000	DN: JK	CK: GRB	DW: FDN	CK: CAL
4-20-01 1-12	REVISIONS	CONT	SECT	JOB
				HIGHWAY
		DIST	COUNTY	SHEET NO.
				114

DATE:
FILE:

DISCLAIMER: The use of this standard is governed by the "Texas Engineering Practice Act". No warranty of any kind is made by TxDOT for any purpose whatsoever. TxDOT assumes no responsibility for the conversion of this standard to other formats or for incorrect results or damages resulting from its use.

DATE:
FILE:

Shipping Parts List							
Ship each pole with the following attached: enlarged hand hole, pole cap, fixed arm connection bolts and washers, and any additional hardware listed in the table.							
Nominal Arm Length	30' Poles with Luminaire		24' Poles with ILSN		19.50' (Single Mast Arm) 20.25' (Dual Mast Arm) Poles with no Luminaire and no ILSN See note above		
	See note above plus: one (or two if ILSN attached) small hand hole, clamp-on simplex		See note above plus one small hand hole				
Single Mast Arm							
Lf ft.	Designation	Quantity	Designation	Quantity	Designation	Quantity	
50	50L		50S		50		
55	55L		55S		55		
60	60L		60S		60		
65	65L	1	65S		65	1	
Dual Mast Arm							
Lf ft.	Lc ft.	Designation	Quantity	Designation	Quantity	Designation	Quantity
50	20	5020L		5020S		5020	
	24	5024L		5024S		5024	
	28	5028L		5028S		5028	
	32	5032L		5032S		5032	
	36	5036L		5036S		5036	
	40	5040L		5040S		5040	
55	44	5044L		5044S		5044	
	20	5520L		5520S		5520	
	24	5524L		5524S		5524	
	28	5528L		5528S		5528	
	32	5532L		5532S		5532	
	36	5536L		5536S		5536	
60	40	5540L		5540S		5540	
	44	5544L		5544S		5544	
	20	6020L		6020S		6020	
	24	6024L		6024S		6024	
	28	6028L		6028S		6028	
	32	6032L		6032S		6032	
65	36	6036L		6036S		6036	
	40	6040L		6040S		6040	
	44	6044L		6044S		6044	
	20	6520L		6520S		6520	
	24	6524L		6524S		6524	
	28	6528L		6528S		6528	
	32	6532L		6532S		6532	
	36	6536L		6536S		6536	
	40	6540L		6540S		6540	
	44	6544L		6544S		6544	

Foundation Summary Table **

Location Ident.	Avg. N Blow/ft.	No. Each	Drill Shaft *** Length (feet)
			48-A
T-1	10	1	22
T-3	10	1	22
Total Drill Shaft Length			44

Notes

- ** Foundations may be listed separately or grouped according to similarity of location and type. Quantities are for the Contractor's information only.
- *** Decimal lengths in Design Table are to allow interpolation for other penetrometer values. Round to nearest foot for entry into Summary Table.

Abbreviations

- Lf= Fixed Arm Length
- Lc= Clamp-on Arm Length (44' Max.)

---NOT FOR CONSTRUCTION---

THIS DOCUMENT HAS BEEN RELEASED FOR THE PURPOSE OF INTERIM REVIEW UNDER THE AUTHORITY OF ZEGEYE Z. KEBEDE, P.E. 121726 IT IS NOT TO BE USED FOR CONSTRUCTION PURPOSES. 05/05/2021

---NOT FOR CONSTRUCTION---

Shipping Parts List							
Traffic Signal Arms (Fixed Mount) (1 per pole)				Luminaire Arms (1 per 30' pole)			
Ship each arm with listed equipment attached							
Nominal Arm Length	Type IV Arm (4 Signals)		Nominal Arm Length		Quantity		
	3 Bracket Assembly and 4 CGB Connectors		8' Arm		1		
ft.	Designation	Quantity	ILSN Arm (Max. 2 per pole) Ship with clamps, bolts and washers				
50	50IV		Nominal Arm Length				
55	55IV		7' Arm				
60	60IV		9' Arm				
65	65IV	2					
Traffic Signal Arms (80 MPH Clamp-On Mount) (1 per pole) Ship each arm with listed equipment attached							
Nominal Arm Length	Type I Arm (1 Signal)		Type II Arm (2 Signals)		Type III Arm (3 Signals)		
	2 CGB connector and 1 clamp w/bolts and washers		1 Bracket Assembly and 3 CGB connectors, and 1 clamp w/bolts and washers		2 Bracket Assembly and 4 CGB connectors, and 1 clamp w/bolts and washers		
ft.	Designation	Quantity	Designation	Quantity	Designation	Quantity	
20	20I-80						
24	24I-80		24II-80				
28	28I-80		28II-80				
32			32II-80		32III-80		
36			36II-80		36III-80		
40					40III-80		
44					44III-80		
Traffic Signal Arms (100 MPH Clamp-On Mount) (1 per pole) Ship each arm with listed equipment attached							
Nominal Arm Length	Type I Arm (1 Signal)		Type II Arm (2 Signals)		Type III Arm (3 Signals)		
	2 CGB connector and 1 clamp w/bolts and washers		1 Bracket Assembly and 3 CGB connectors, and 1 clamp		2 Bracket Assembly and 4 CGB connectors, and 1 clamp		
ft.	Designation	Quantity	Designation	Quantity	Designation	Quantity	
20	20I-100						
24	24I-100		24II-100				
28	28I-100		28II-100				
32			32II-100		32III-100		
36			36II-100		36III-100		
40					40III-100		
44					44III-100		
Anchor Bolt Assemblies (1 per pole)				Each anchor bolt assembly consists of the following: Top and bottom templates, 4 anchor bolts, 8 nuts, 8 flat washers and 4 nut anchor devices (type 2) per Standard Drawing "TS-FD". Templates may be removed for shipment.			
Anchor Bolt Diameter	Anchor Bolt Length	Quantity					
2 1/2 "	5' - 3"	2					



**LONG MAST
ARM ASSEMBLY
PARTS LIST**

LMA (5) - 12

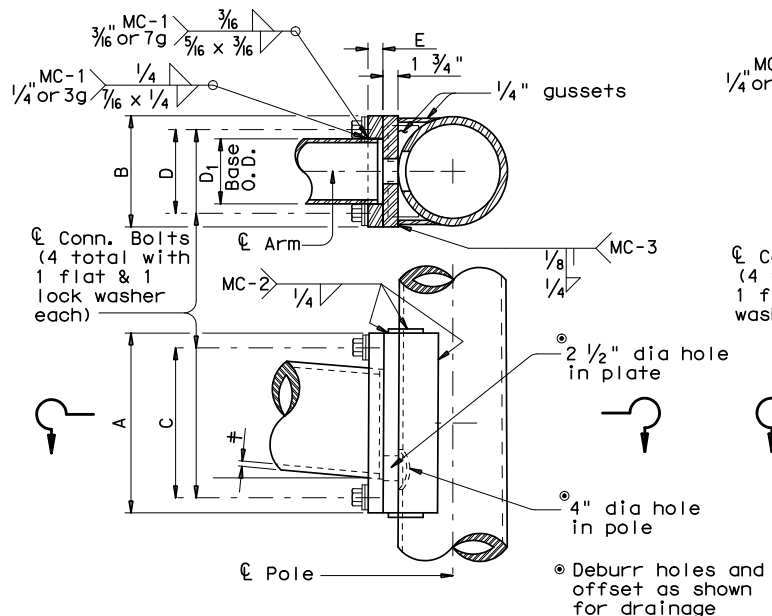
Sheet 5 of 5

© TxDOT November 2000		DN: JK	CK: GRB	DW: FDN	CK: CAL
REVISIONS		CONT	SECT	JOB	HIGHWAY
4-20-01 1-12		DIST	COUNTY		SHEET NO. 115

DISCLAIMER: The use of this standard is governed by the "Texas Engineering Practice Act". No warranty of any kind is made by TxDOT for any purpose whatsoever. TxDOT assumes no responsibility for the conversion of this standard to other formats or for incorrect results or damages resulting from its use.

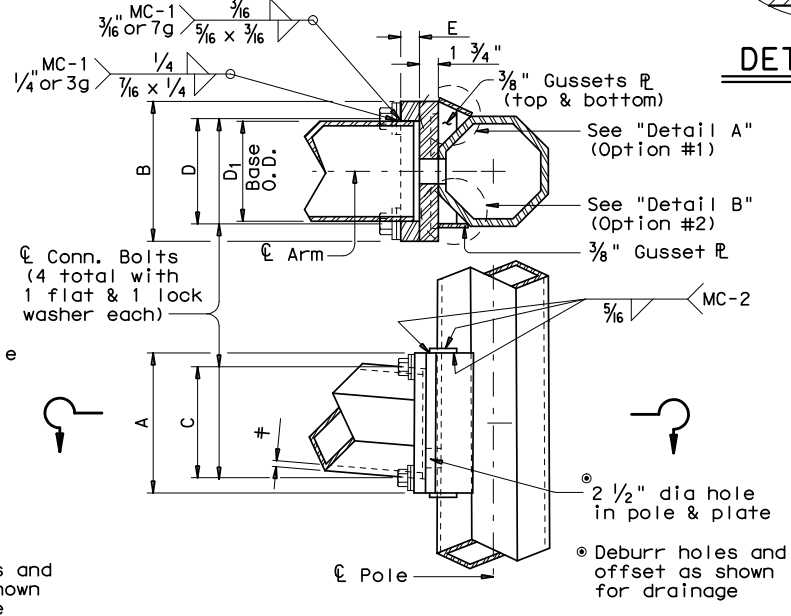
DATE:
FILE:

ARM SIZE		A	B	C	D	E	CONN BOLT DIA
D ₁	ϕ	in.	in.	in.	in.	in.	in.
6.5	.179	12	9	9	6	1 3/4	1
7.5	.179	13	9	10	6	1 3/4	1
8.0	.179	14	10	11	7	2	1 1/4
9.0	.179	16	11	13	8	2	1 1/4
9.5	.179	17	12	14	9	2	1 1/4
9.5	.239	18	12	15	9	2	1 1/4
10.0	.239	18	12	15	9	2	1 1/4
10.5	.239	18	13	15	10	3	1 1/2
11.0	.239	18	13	15	10	3	1 1/2

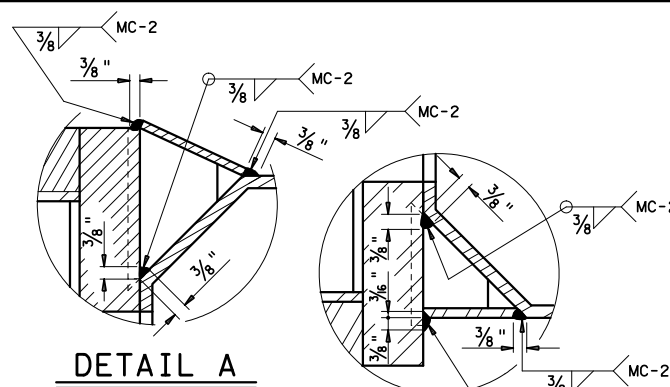


FIXED MOUNT DETAIL 1

ARM SIZE		A	B	C	D	E	CONN BOLT DIA
D ₁	ϕ	in.	in.	in.	in.	in.	in.
7.0	.179	11	11	8	8	1 3/4	1 1/4
7.5	.179	11	11	8	8	1 3/4	1 1/4
8.0	.179	11	11	8	8	2	1 1/4
9.0	.179	13	13	10	10	2	1 1/4
10.0	.179	13	13	10	10	2	1 1/4
9.5	.239	13	13	10	10	2	1 1/4
10.0	.239	14	14	11	11	2	1 1/2
11.0	.239	14	14	11	11	3	1 1/2
11.5	.239	14	14	11	11	3	1 1/2

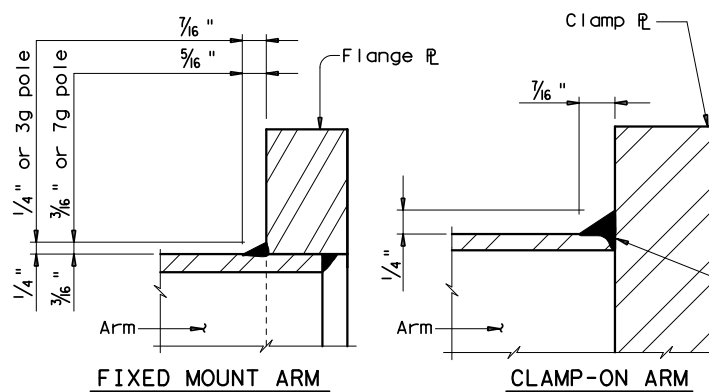


FIXED MOUNT DETAIL 2



DETAIL A

DETAIL B



FIXED MOUNT ARM

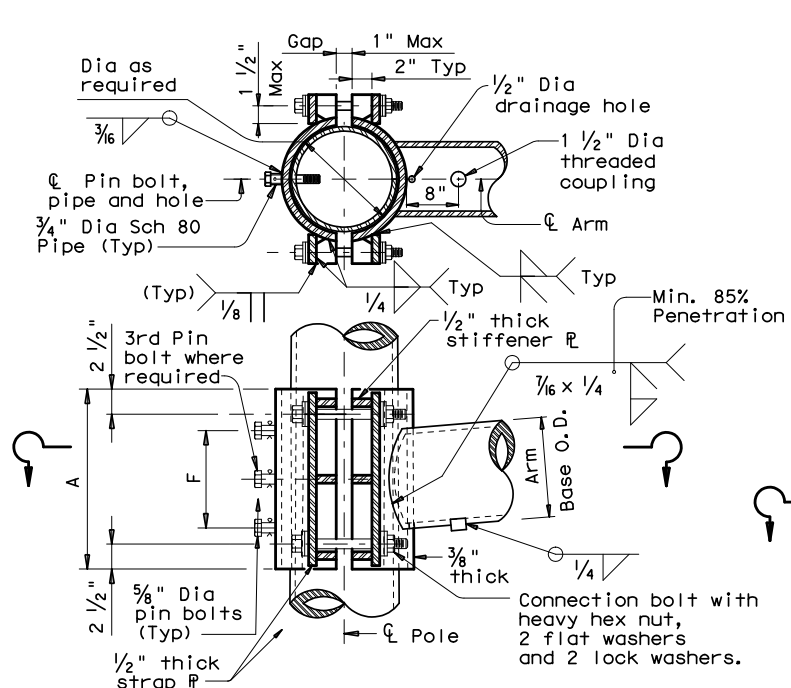
CLAMP-ON ARM

ARM BASE WELD DETAILS

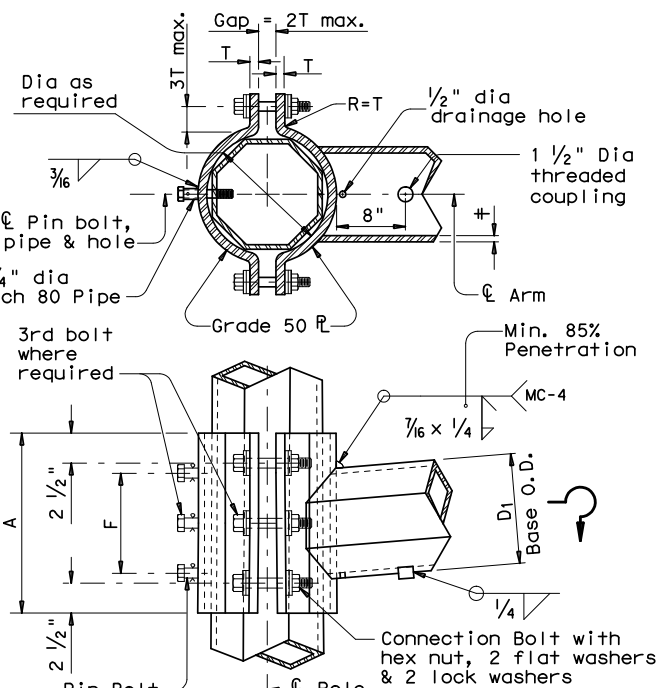
ARM SIZE		A	F	CONN. BOLTS		PIN BOLTS	
D ₁	ϕ	in.	in.	No.	Dia	No.	Dia
6.5	.179	12	6	4	1/2	2	5/8
7.5	.179	14	8	4	1/2	2	5/8
8.0	.179	14	8	4	1/2	2	5/8
9.0	.179	16	10	4	1/2	2	5/8
9.5	.179	18	12	4	1 1/4	3	5/8
9.5	.239	18	12	4	1 1/4	3	5/8
10.0	.239	18	12	4	1 1/4	3	5/8

ARM SIZE		A	F	T	CONN. BOLTS		PIN BOLTS	
D ₁	ϕ	in.	in.	in.	No.	Dia	No.	Dia
7.0	.179	12	6	3/4	4	3/4	2	5/8
7.5	.179	14	8	3/4	4	3/4	2	5/8
8.0	.179	14	8	3/4	4	3/4	2	5/8
9.0	.179	16	10	7/8	4	1	2	5/8
10.0	.179	18	10	7/8	4	1	2	5/8
9.5	.239	18	10	1	6	1	3	5/8
10.0	.239	18	10	1	6	1	3	5/8

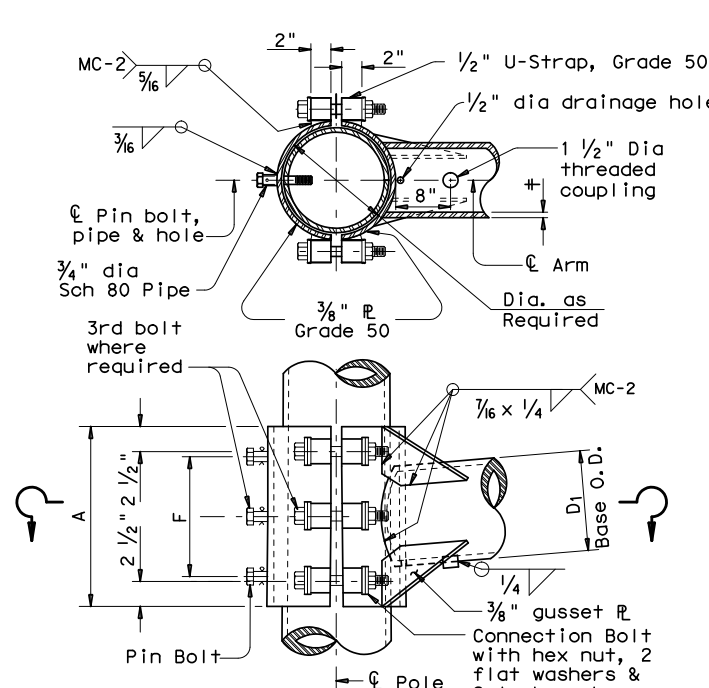
ARM SIZE		A	F	CONN. BOLTS		PIN BOLTS	
D ₁	ϕ	in.	in.	No.	Dia	No.	Dia
6.5	.179	12	6	4	1	2	5/8
7.5	.179	14	8	4	1	2	5/8
8.0	.179	14	8	4	1	2	5/8
9.0	.179	16	10	4	1	2	5/8
9.5	.179	18	12	6	1	3	5/8
9.5	.239	18	12	6	1	3	5/8
10.0	.239	18	12	6	1	3	5/8



CLAMP-ON DETAIL 1



CLAMP-ON DETAIL 2



CLAMP-ON DETAIL 3

MATERIALS	
Round Shafts or Polygonal Shafts ¹	ASTM A595 Gr. A, A588, A1008 HSLAS Gr. 50 Class 2, A1011 HSLAS Gr. 50 Class 2, A572 Gr. 50 or A1011 SS Gr. 50 ²
Plates ¹	ASTM A36, A588, or A572 Gr. 50
Connection Bolts	ASTM A325 or A449, except where noted
Pin Bolts	ASTM A325
Pipe ¹	ASTM A53 Gr. B, A501, A1008 HSLAS-F Gr. 50, A1011 HSLAS-F Gr. 50
Misc. Hardware	Galvanized steel or stainless steel or as noted

- ¹ ASTM A572, A1008 HSLAS, A1011 HSLAS, A1008 HSLAS-F, A1011 HSLAS-F or A1011 SS may have higher yield strengths but shall not have less elongation than the grade indicated.
- ² ASTM A1011 SS Gr. 50 material shall also have a minimum elongation of 18 percent in 8 inches or 23 percent in 2 inches. Material thickness in excess of those stipulated under A1011 SS will be acceptable providing the material meets all other A1011 SS requirements and the requirements of this item.

GENERAL NOTES:

Clamp-on details are used for the second arm on dual mast arm assemblies. A Maximum 1 1/2 inch wide vertical slotted hole shall be cut in the front clamp plate to facilitate drainage during galvanizing. The slot shall be centered behind the arm and shall be no longer than the arm diameter minus 1 inch.

Fixed mount details are used for single mast arm assemblies and for the first arm on dual mast arm assemblies.

Where duplicate parts occur on a detail, welds shown for one part shall apply to all similar parts on the detail.

Pin bolts are required to prevent rotation of clamp-on arms under design wind forces.

NOTE:

Pin bolts shall be A325 with threads excluded from the shear plane. Pin bolt and 3/4 inch dia pipe shall have 3/16 inch dia holes for a 1/8 inch dia galvanized cotter pin. Back clamp plate shall be furnished with a 3/4 inch dia hole for each pin bolt. An 1/16 inch dia hole for each pin bolt shall be field drilled through the pole after arm orientations have been approved by the Engineer.

Texas Department of Transportation
Traffic Operations Division

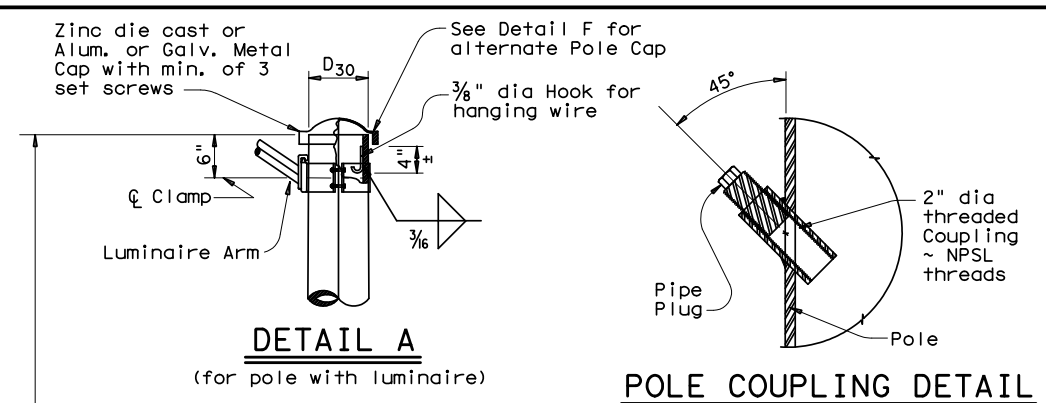
**STANDARD ASSEMBLY
FOR TRAFFIC SIGNAL
SUPPORT STRUCTURES**

MAST ARM CONNECTIONS

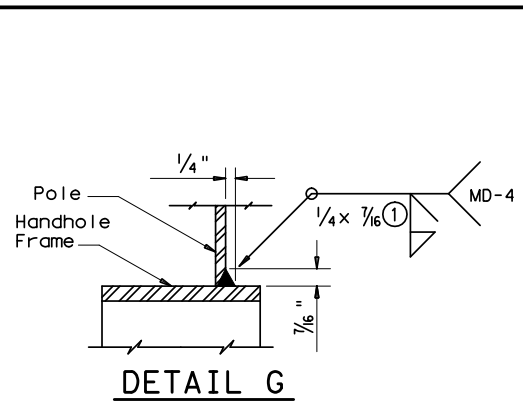
MA-C-12

© TxDOT August 1995	DN: MS	CK: JSY	DW: MMF	CK: JSY
5-96 5-09 1-12	REVISIONS	CONT	SECT	JOB
				HIGHWAY
	DIST		COUNTY	SHEET NO.
				116

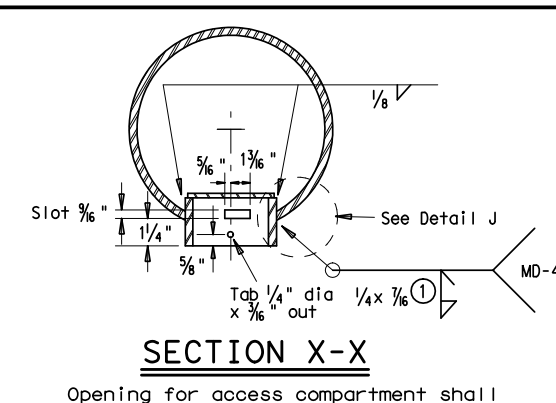
DISCLAIMER: The use of this standard is governed by the "Texas Engineering Practice Act". No warranty of any kind is made by TxDOT for any purpose whatsoever. TxDOT assumes no responsibility for the consequences of any use of this standard to other formats or for incorrect results or damages resulting from its use.



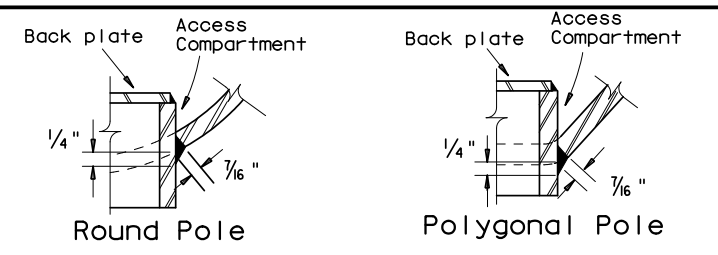
POLE COUPLING DETAIL



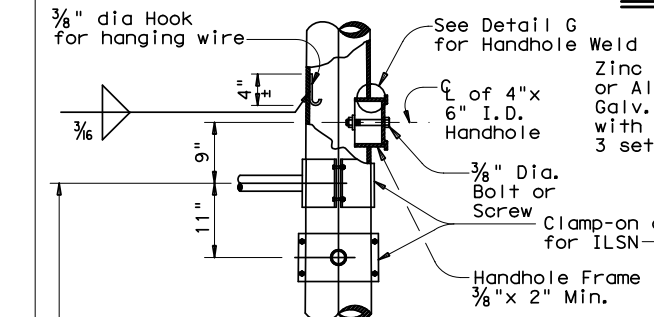
DETAIL G



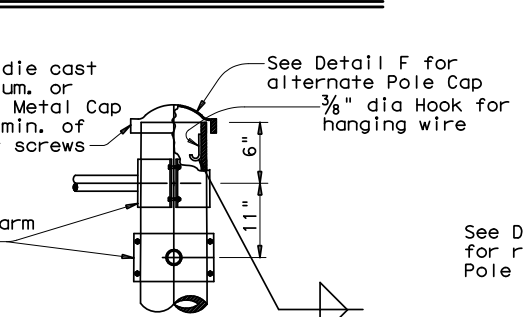
Opening for access compartment shall be no more than 1/16 inch wider than the access compartment itself.



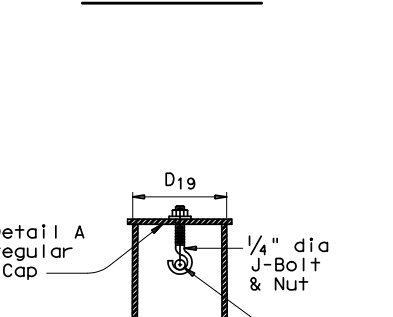
DETAIL J



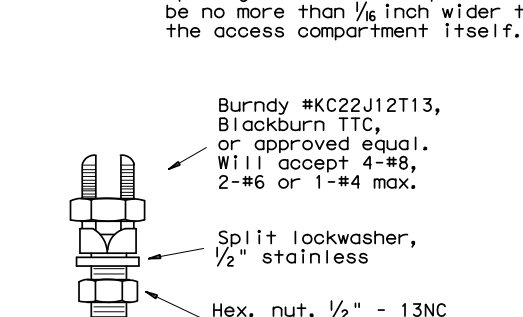
DETAIL B



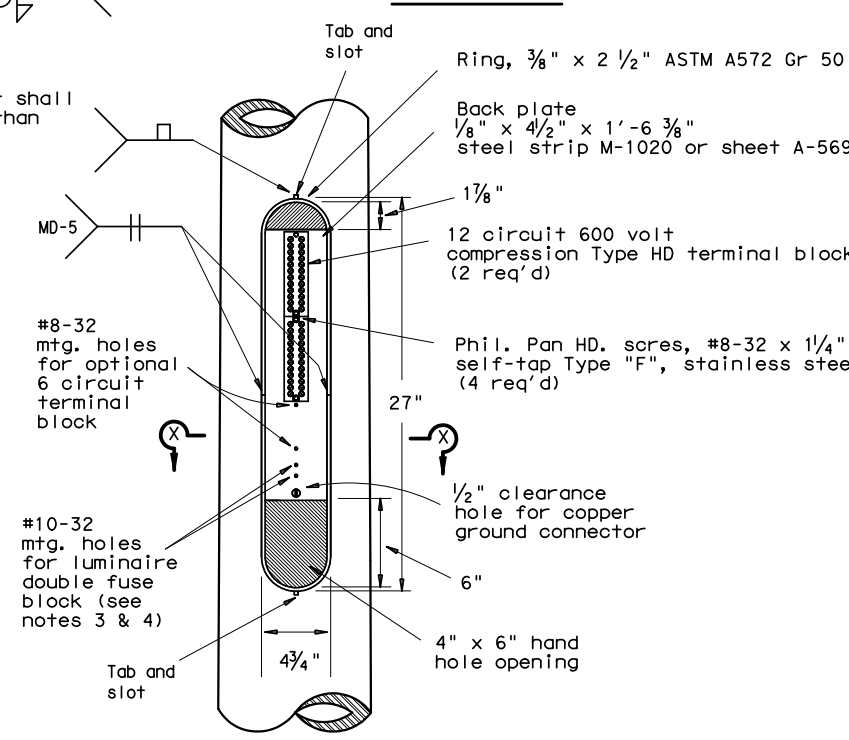
DETAIL C



SECTION Y-Y



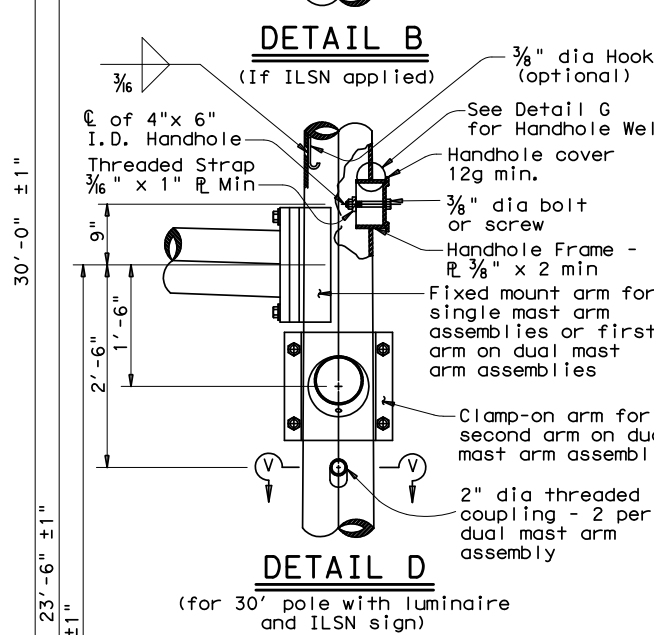
COPPER GROUND CONNECTOR



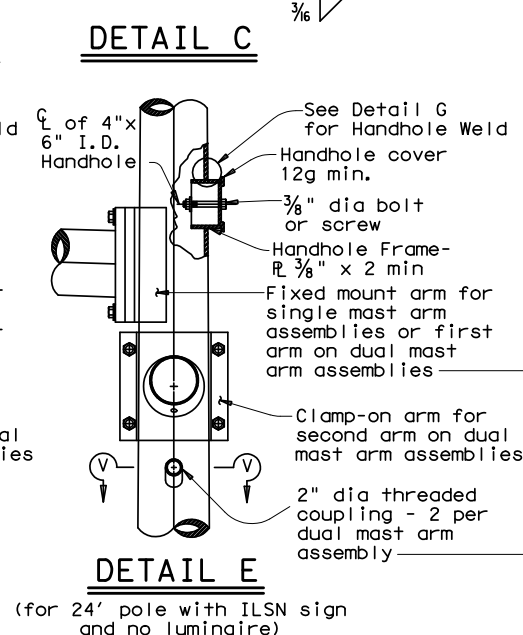
ACCESS COMPARTMENT

NOTES:

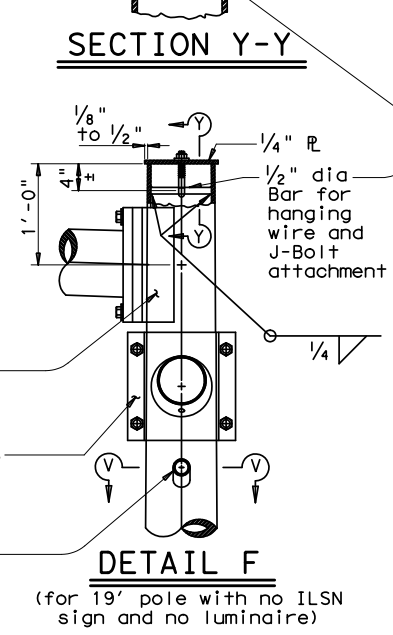
- The cover shall be one piece formed from ABS plastic, shall be a pearl gray color, and shall be suitable for exposure to harsh sunlight and extreme weather. Cover shall latch with two screw latches and shall fit tightly to the enclosure ring to create a rainproof seal. Latch screws shall be 1/4-20 stainless flat socket head screws with tamper proof feature.
- The pole manufacturer shall provide with each pole a separate kit consisting of: one cover with two latching assemblies, two terminal strips (Marathon #985GP12CU or approved equal), four #8-32 x 1 1/4 self tapping type "F" stainless steel pan head screws, and one ground connector (Blackburn TTC, Burndy KC22J12T13, or Ilco SSS-5). The traffic signal contractor shall install the kit items in the field.
- The screw hole spacing on the enclosure back plate shall be for two Marathon #985GP12 terminal strips, one Marathon #985GP06CU terminal strip, and one Bussmann #BM6032B fuse block.
- Install one Bussmann #BM6032B, Littelfuse #L60030M-2C, or Ferraz-Shawmut #30352 fuse block for poles where luminaires are to be installed.



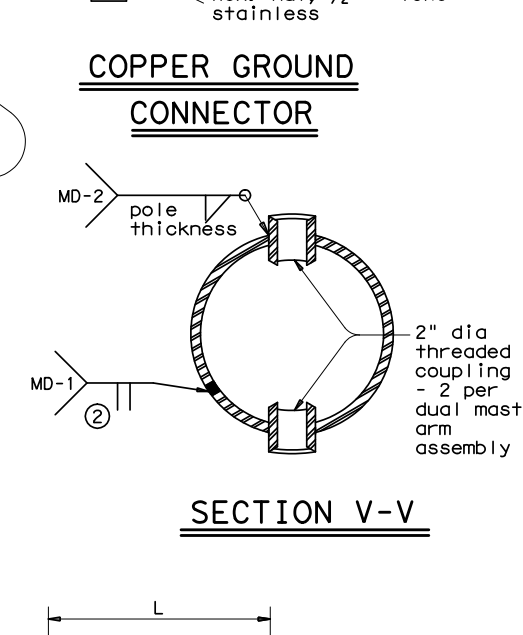
DETAIL D



DETAIL E

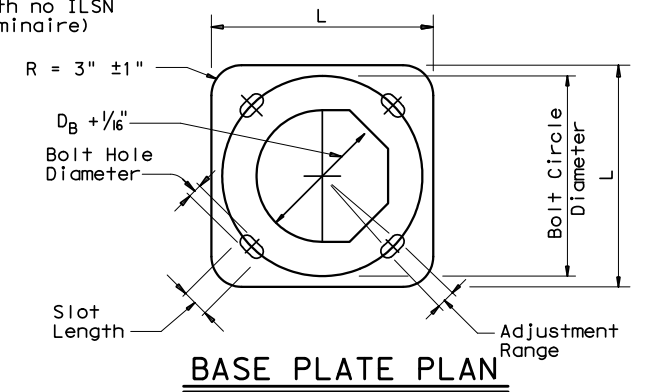


DETAIL F



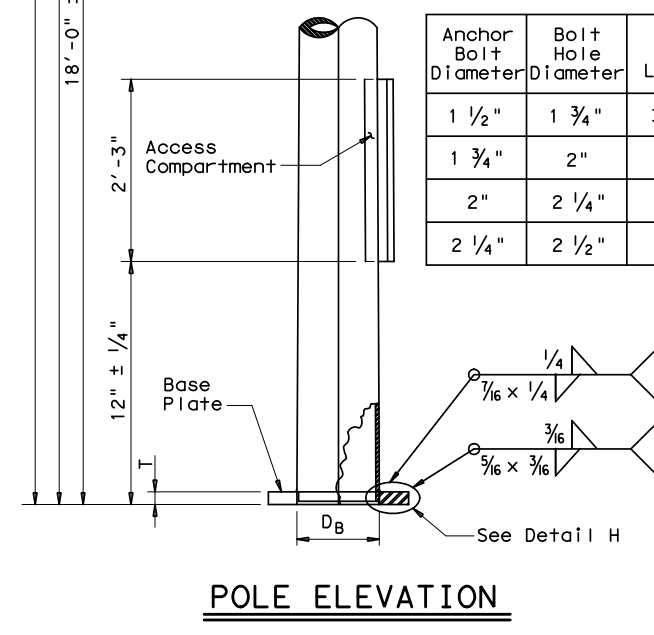
SECTION V-V

Anchor Bolt Diameter	Bolt Hole Diameter	Slot Length	Bolt Circle Diameter	Base R Dim. L x T	Adjust. Range
1 1/2"	1 3/4"	3 1/2"	17"	18" x 1 1/2"	13.4°
1 3/4"	2"	4"	19"	20" x 1 3/4"	13.5°
2"	2 1/4"	4 1/2"	21"	22" x 2"	13.6°
2 1/4"	2 1/2"	5"	23"	24" x 2 1/4"	13.7°

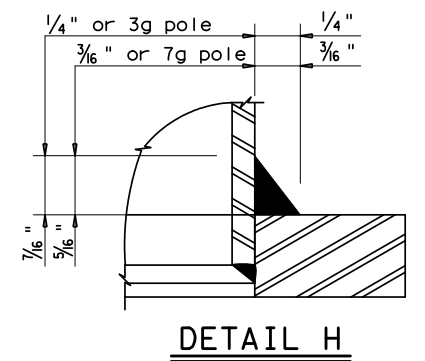


BASE PLATE PLAN

- 85% Min. penetration
- 60% Min. penetration
100% penetration within 6" of circumferential base welds.



POLE ELEVATION



DETAIL H

Texas Department of Transportation
Traffic Operations Division

TRAFFIC SIGNAL SUPPORT STRUCTURES MAST ARM POLE DETAILS

MA-D-12

© TxDOT August 1995	DN: MS	CK: JSY	DW: FDN	CK: CAL
REVISIONS	CONT	SECT	JOB	HIGHWAY
8-99 1-12	DIST	COUNTY	SHEET NO. 117	