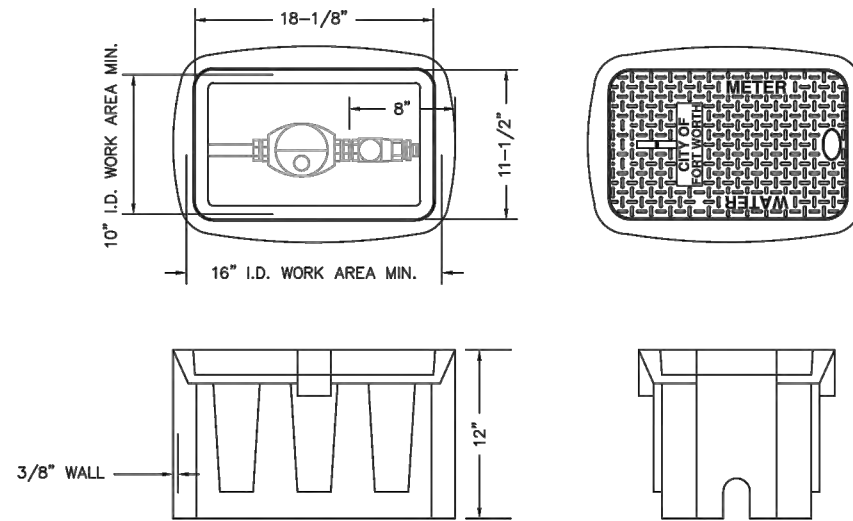
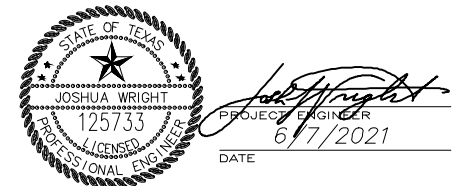


METER BOX LID



METER BOX

- NOTE:
1. USE THIS METER BOX IN NON-PAVED AREAS ONLY.
 2. DIMENSIONS $\pm 1/8"$ U.N.O.
 3. WALL THICKNESS: $3/8"$ MIN.
 4. SNAP LOCK POCKET WILL RECEIVE AMR/AMI DEVICE ENDPOINT. SNAP LOCK SLOT IS $1-7/8" \pm .015"$ TO ALLOW FOR A FINGER FORCE INSTALL. POCKET HEIGHT IS $3/8"$ FOR MIN $1/8"$ AIR GAP.



DATE	BY	REV	REVISION

DUNAWAY 550 Bailey Avenue
Suite 400
Fort Worth, TX 76107
817-335-1121
(TX REG #1114)

FORT WORTH
PROJ NO. 101264

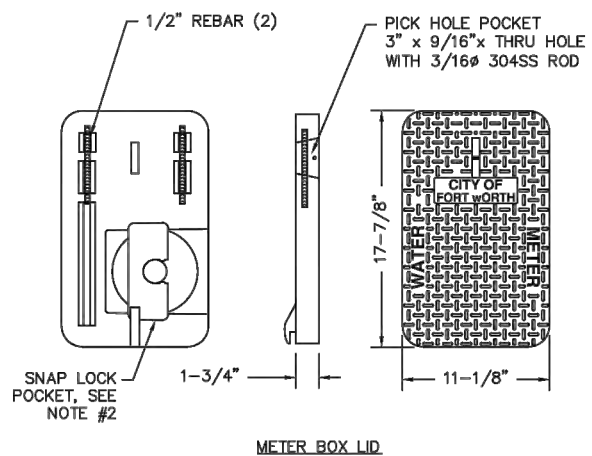
Texas Department of Transportation
© 2021

2018 SAFE ROUTES TO SCHOOL IMPROVEMENTS

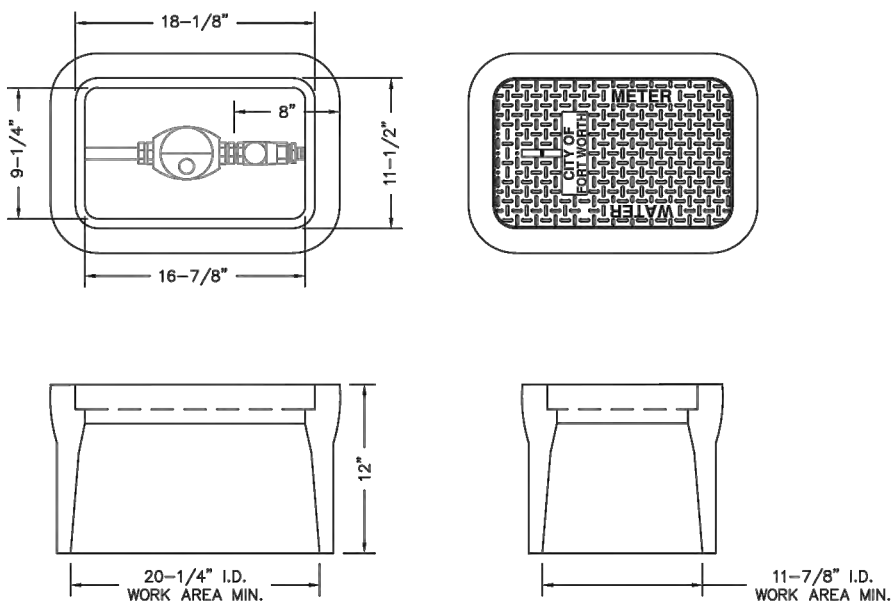
CFW STANDARD DETAIL D113

	CITY OF FORT WORTH, TEXAS 1-INCH STANDARD PLASTIC METER BOX (3/4 & 1-INCH METERS) (CLASS A)	REVISED: 01-04-2017 33 12 10-D113
--	---	---

FED.RD. DIV. NO.	STATE	PROJECT NO.	HIGHWAY NO.		
6	TEXAS	STP 2021(929)TP	VA		
STATE DISTRICT	COUNTY	CONTROL NO.	SECTION NO.	JOB NO.	SHEET NO.
FTW	TARRANT	0902	90	082	267

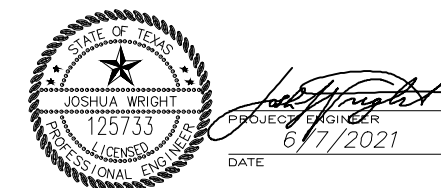


METER BOX LID



METER BOX

- NOTE:
1. USE THIS METER BOX IN PAVED AREAS ONLY.
 2. SNAP LOCK POCKET WILL RECEIVE AMR/AMI DEVICE ENDPOINT. SNAP LOCK SLOT IS 1-7/8" ± .015" TO ALLOW FOR A FINGER FORCE INSTALL. POCKET HEIGHT IS 3/8" FOR MIN 1/8" AIR GAP.



DATE	BY	REV	REVISION

DUNAWAY 550 Bailey Avenue
Suite 400
Fort Worth, TX 76107
817-335-1121
(TX REG #1114)



PROJ NO. 101264

Texas Department of Transportation
© 2021

2018 SAFE ROUTES TO SCHOOL IMPROVEMENTS

CFW STANDARD DETAIL D116



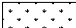




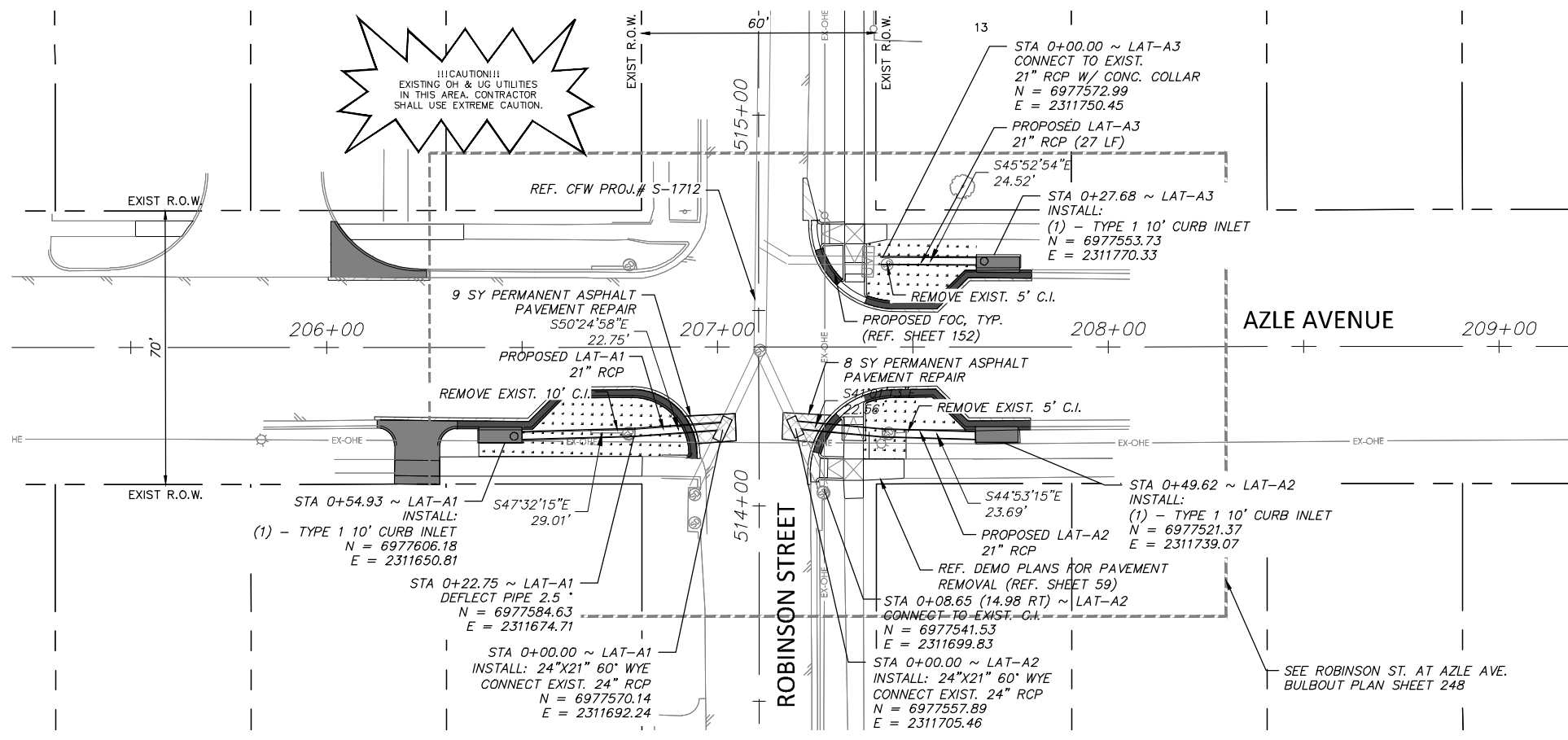
CITY OF FORT WORTH, TEXAS
1-INCH STANDARD CONCRETE METER BOX
(3/4 & 1-INCH METERS) (CLASS A)

REVISED: 01-04-2017
33 12 10-D116

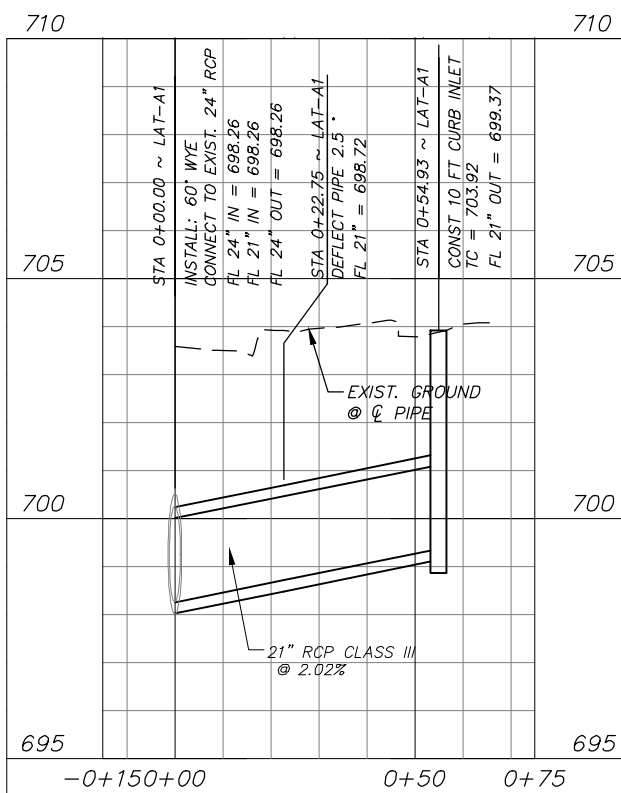
FED.RD. DIV. NO.	STATE	PROJECT NO.	HIGHWAY NO.		
6	TEXAS	STP 2021(929)TP	VA		
STATE DISTRICT	COUNTY	CONTROL NO.	SECTION NO.	JOB NO.	SHEET NO.
FTW	TARRANT	0902	90	082	268

LEGEND

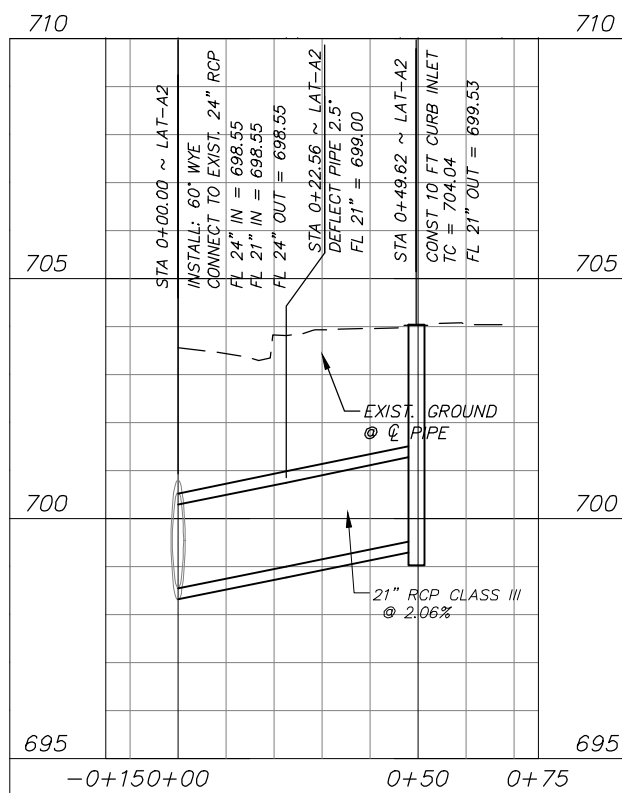
-  PROPOSED CONCRETE PAVEMENT
-  PROPOSED PERMANENT ASPHALT PAVEMENT REPAIR
-  PROPOSED SOD
-  PROPOSED TYPE 1 CURB INLET
-  PROPOSED STORM PIPE



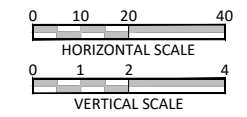
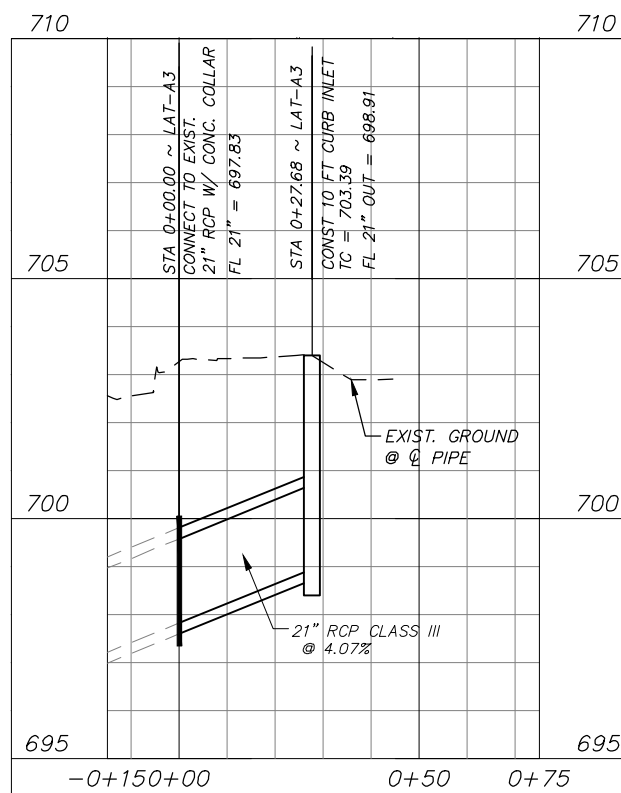
LAT-A1



LAT-A2



LAT-A3



STATE OF TEXAS
 JOSHUA WRIGHT
 125733
 LICENSED PROFESSIONAL ENGINEER
 PROJECT ENGINEER
 6/11/2021
 DATE

- STORM NOTES:**
- VERTICAL PROFILES PROVIDED FOR GENERAL REFERENCE. CONTRACTOR SHALL LAY VERTICAL GRADE PER THESE PLANS AND AS NECESSARY DUE TO VARYING SITE CONDITIONS AT THE DIRECTION OF THE ENGINEER.
 - REFER TO DETAIL 32 01 17-D521 FOR ASPHALT PAVEMENT TRENCH REPAIR. CONTRACTOR TO NOTIFY ENGINEER IF CONCRETE PAVEMENT IS ENCOUNTERED UNDER ASPHALT PAVEMENT.

DATE	BY	REV	REVISION

DUNAWAY 550 Bailey Avenue
 Suite 400
 Fort Worth, TX 76107
 (TX REG #1114) 817-335-1121

FORT WORTH

PROJ NO. 101264 FILE NO. K-2630

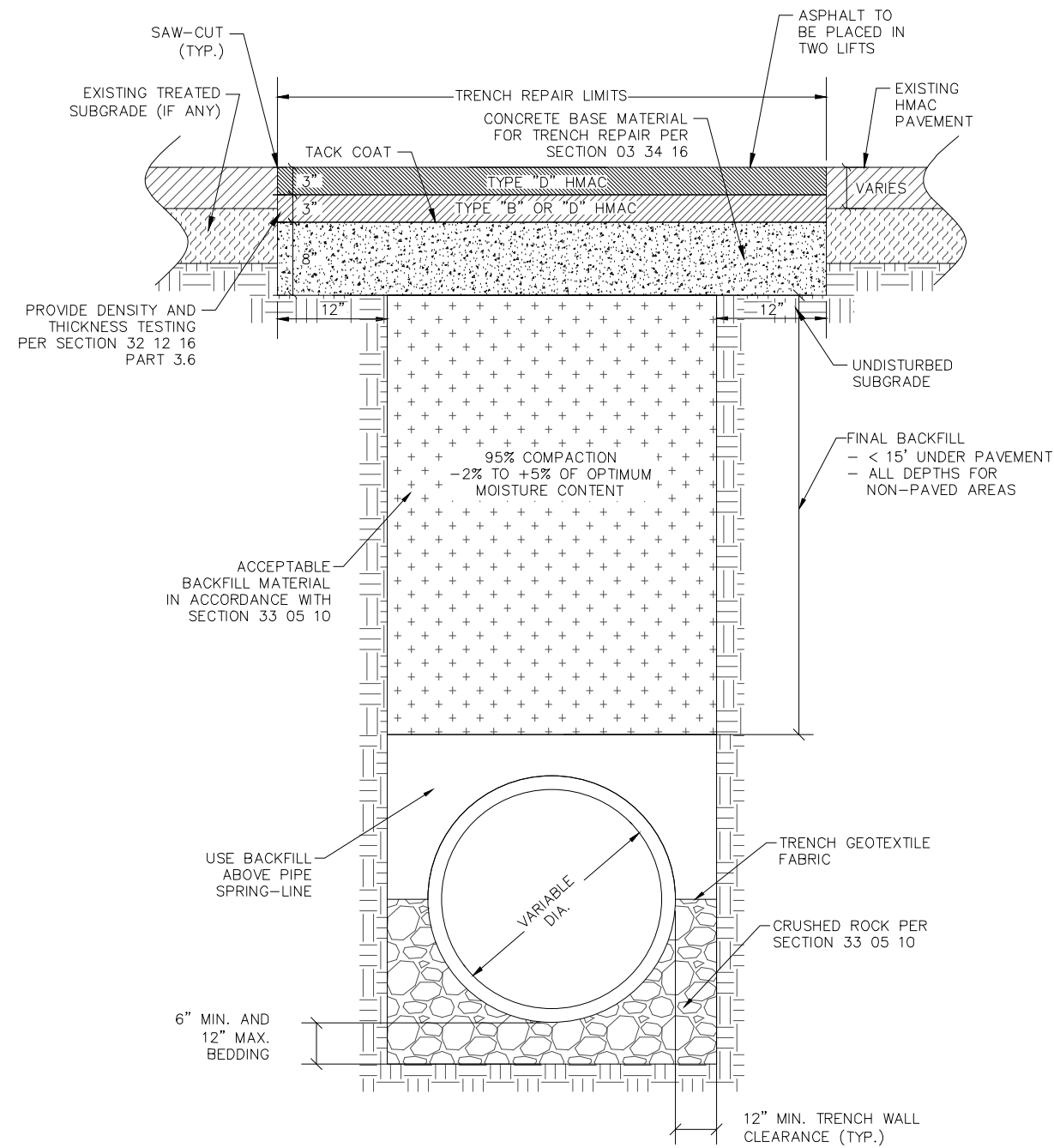
Texas Department of Transportation
 © 2020

2018 SAFE ROUTES TO SCHOOL IMPROVEMENTS

STORM PLAN AND PROFILE

W.J. TURNER ELEMENTARY SCHOOL

FED. RD. DIV. NO.	STATE	PROJECT NO.	HIGHWAY NO.
6	TEXAS	STP 2021(929)TP	VA
STATE DISTRICT	COUNTY	CONTROL NO.	SECTION NO.
FTW	TARRANT	0902	90
			JOB NO.
			082
			SHEET NO.
			269



- D520 ASPHALT PAVEMENT TRENCH REPAIR - ARTERIAL AND INDUSTRIAL STREETS (32 01 17-D520)
- D001 ACCEPTABLE BACKFILL (33 05-D001)
- D402 EMBEDMENT FOR RCP STORM SEWER ALL SIZES (33 05 10-D402)

SCALE: N.T.S.



Joshua Wright
 PROJECT ENGINEER
 DATE: 6/7/2021

DATE	BY	REV	REVISION

DUNAWAY 550 Bailey Avenue
 Suite 400
 Fort Worth, TX 76107
 817-335-1121
 (TX REG #1114)



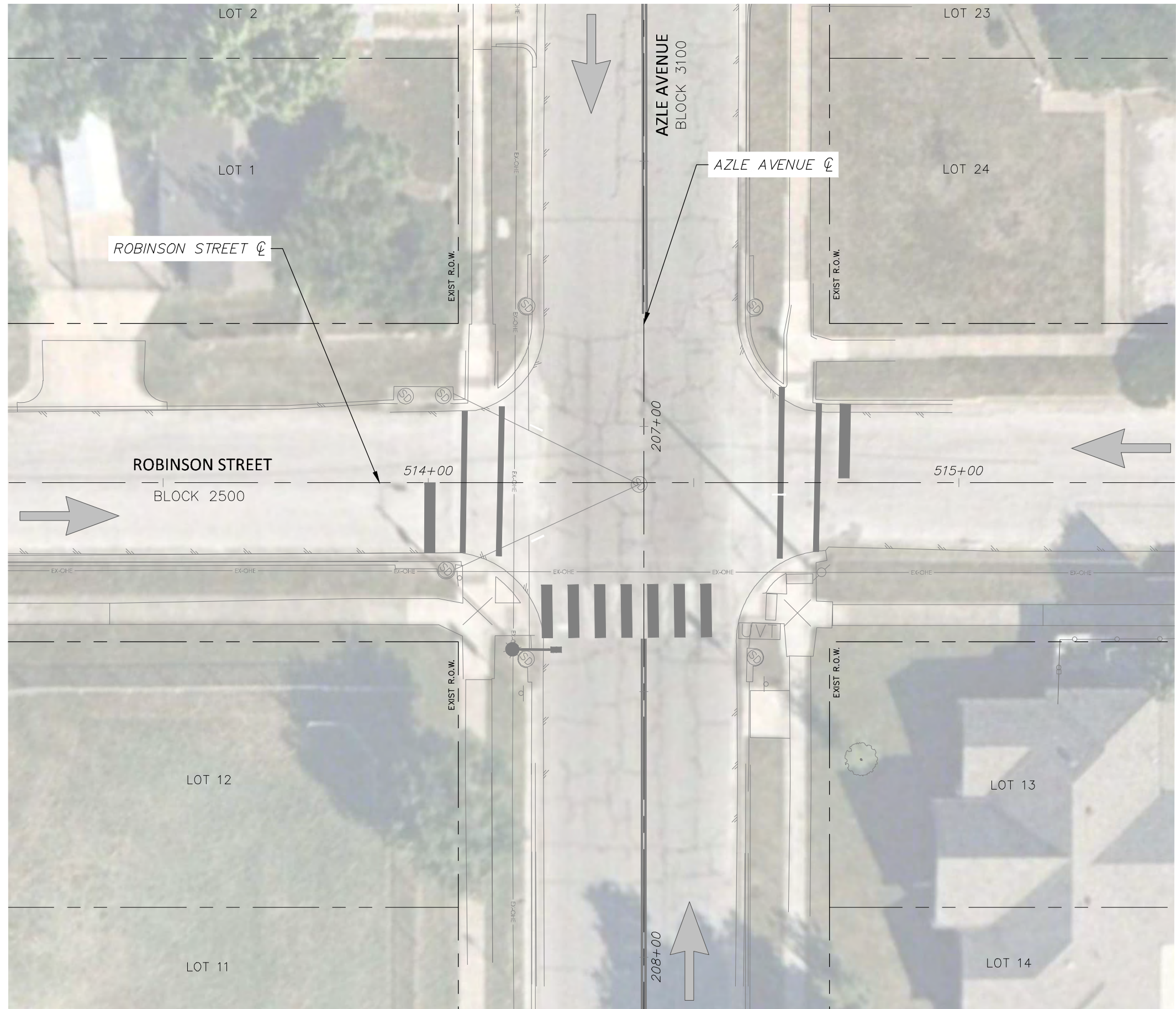
PROJ NO. 101264

Texas Department of Transportation
 © 2021

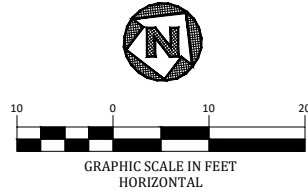
2018 SAFE ROUTES TO SCHOOL IMPROVEMENTS

PAVEMENT TRENCH REPAIR DETAIL

FED. RD. DIV. NO.	STATE	PROJECT NO.			HIGHWAY NO.
6	TEXAS	STP 2021(929)TP			VA
STATE DISTRICT	COUNTY	CONTROL NO.	SECTION NO.	JOB NO.	SHEET NO.
FTW	TARRANT	0902	90	082	270



LEGEND			
EXISTING			
	STEEL POLE & MAST ARM		SIGNAL CONDUIT RUN (R)
	PEDESTAL POLE		352i ATC CABINET / 2070 ATC CONTROLLER
	SIGNAL HEAD & No.		TRANSFORMER
	PEDESTRIAN SIGNAL & No.		POWER SERVICE
	SMALL/LARGE GROUND BOX		
	LUMINAIRE		
PROPOSED			
	STEEL POLE & MAST ARM		SIGNAL CONDUIT RUN (R)
	PEDESTAL POLE		352i ATC CABINET / 2070 ATC CONTROLLER
	SIGNAL HEAD & No.		TRANSFORMER
	PEDESTRIAN SIGNAL & No.		POWER SERVICE
	SMALL/LARGE GROUND BOX		CROSSWALK
	SIGNS		



DONALD J. SZCZESNY

 PROJECT ENGINEER

 DATE _____

DATE	BY	REV	REVISION

550 Bailey Avenue

 Suite 400

 Fort Worth, TX 76107

 817-335-1121

PROJ NO. 101264 FILE NO. K-2630

Texas Department of Transportation

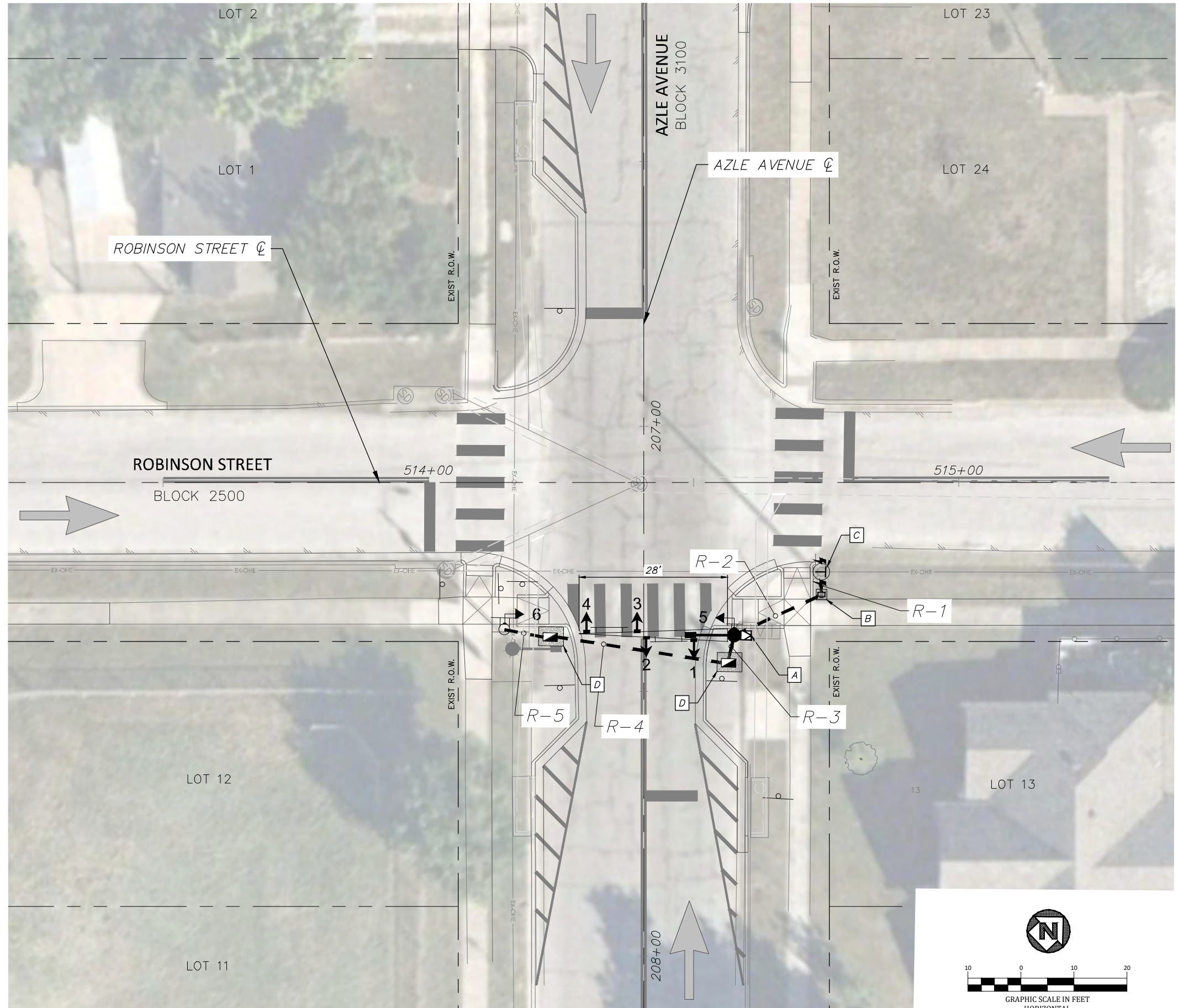
 © 2021

2018 SAFE ROUTES TO SCHOOL IMPROVEMENTS

EXISTING LAYOUT

W.J. TURNER ELEMENTARY SCHOOL

FED. RD. DIV. NO.	STATE	PROJECT NO.	HIGHWAY NO.		
6	TEXAS	STP 2021(929)TP	VA		
STATE DISTRICT	COUNTY	CONTROL NO.	SECTION NO.	JOB NO.	SHEET NO.
FTW	TARRANT	0902	90	082	272



LEGEND			
EXISTING			
	STEEL POLE & MAST ARM		SIGNAL CONDUIT RUN (R)
	PEDESTAL POLE		352i ATC CABINET / 2070 ATC CONTROLLER
	SIGNAL HEAD & No.		TRANSFORMER
	PEDESTRIAN SIGNAL & No.		POWER SERVICE
	SMALL/LARGE GROUND BOX		
	LUMINAIRE		
PROPOSED			
	STEEL POLE & MAST ARM		SIGNAL CONDUIT RUN (R)
	PEDESTAL POLE		352i ATC CABINET / 2070 ATC CONTROLLER
	SIGNAL HEAD & No.		TRANSFORMER
	PEDESTRIAN SIGNAL & No.		POWER SERVICE
	SMALL/LARGE GROUND BOX		POWER SERVICE
	LUMINAIRE		CROSSWALK
	SIGNS		

GROUND BOX AND CABINET SUMMARY		
CALLOUT	TYPE	QUANTITY
A	COFW 336 CABINET (SEE DETAIL)	1 EA
B	SERVICE PEDESTAL	1 EA
C	PROPOSED POLE MOUNTED TRANSFORMER	1 EA
D	TYPE D GROUND BOX WITH APRON	2 EA

NOTE: CABINET TO BE CONSTRUCTED TO COFW STANDARD. SEE COFW ATTACHED DETAIL SHEET 298. SERVICE DETAILS SHOWN ON SHEET 275.

DONALD J. SZCZESNY

 PROJECT ENGINEER

 7/9/21

 DATE

DATE	BY	REV	REVISION

550 Bailey Avenue

 Suite 400

 Fort Worth, TX 76107

 817-335-1121

PROJ NO. 101264

 FILE NO. K-2630

Texas Department of Transportation

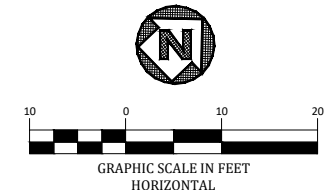
 © 2021

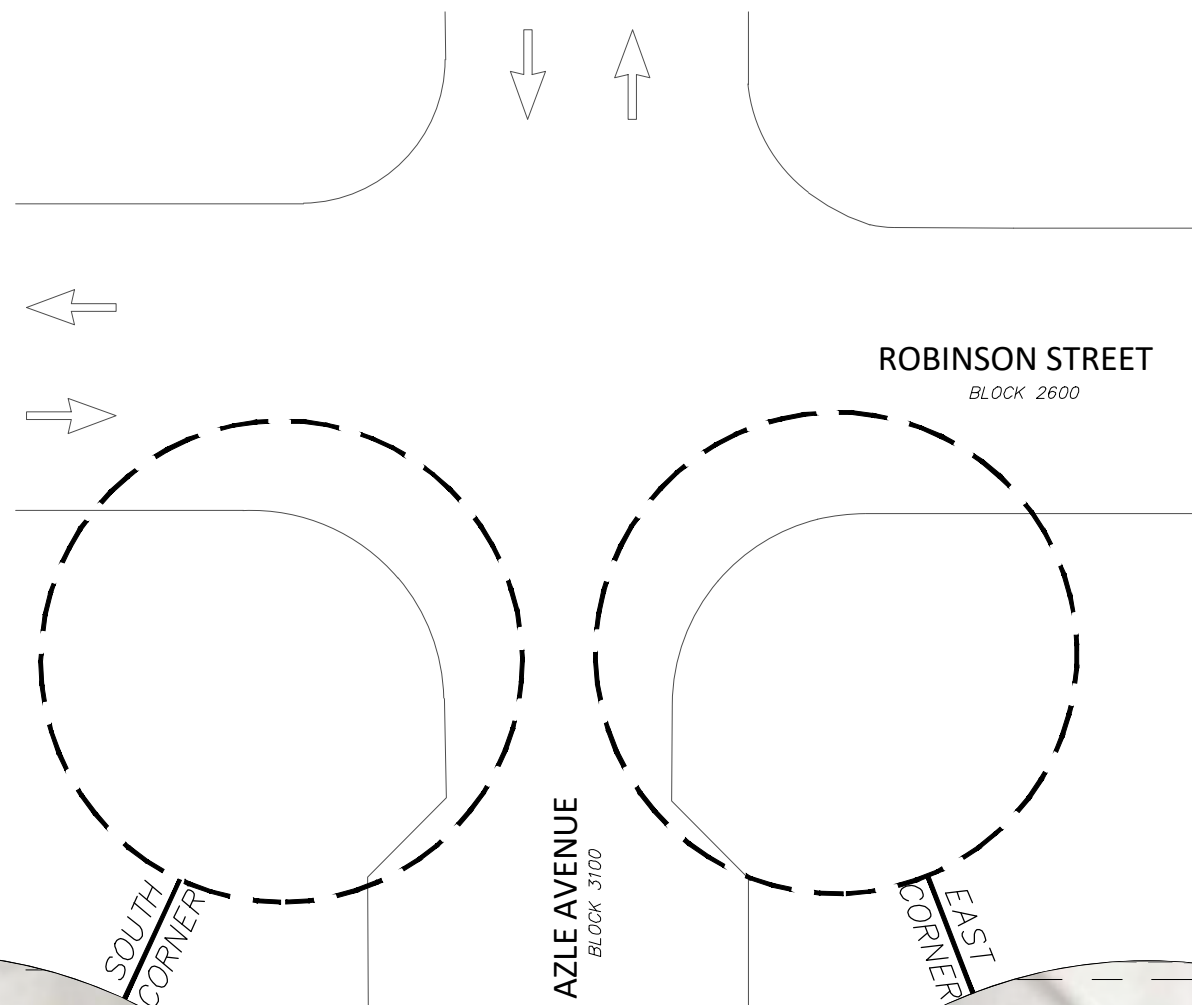
2018 SAFE ROUTES TO SCHOOL IMPROVEMENTS

PROPOSED HAWK SIGNAL LAYOUT

W.J. TURNER ELEMENTARY SCHOOL

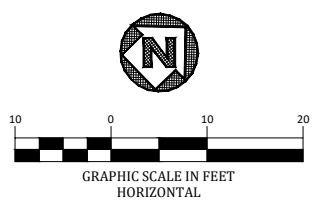
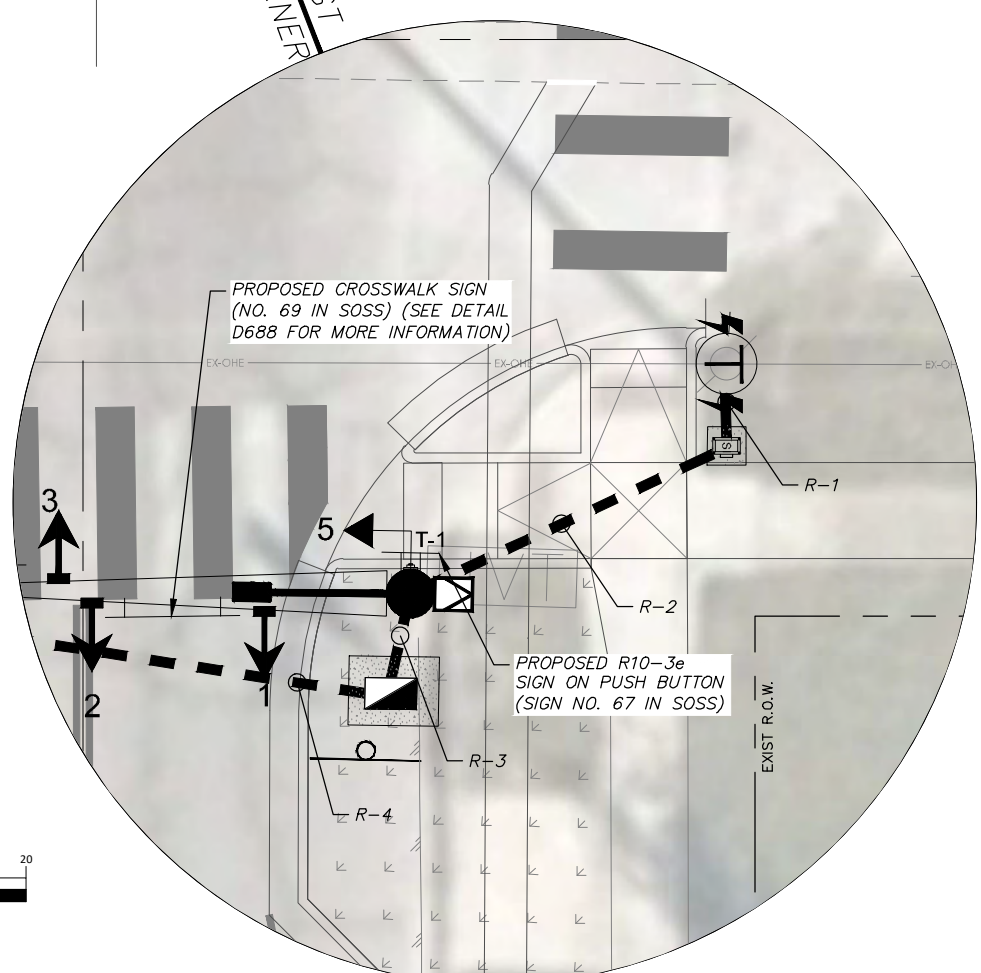
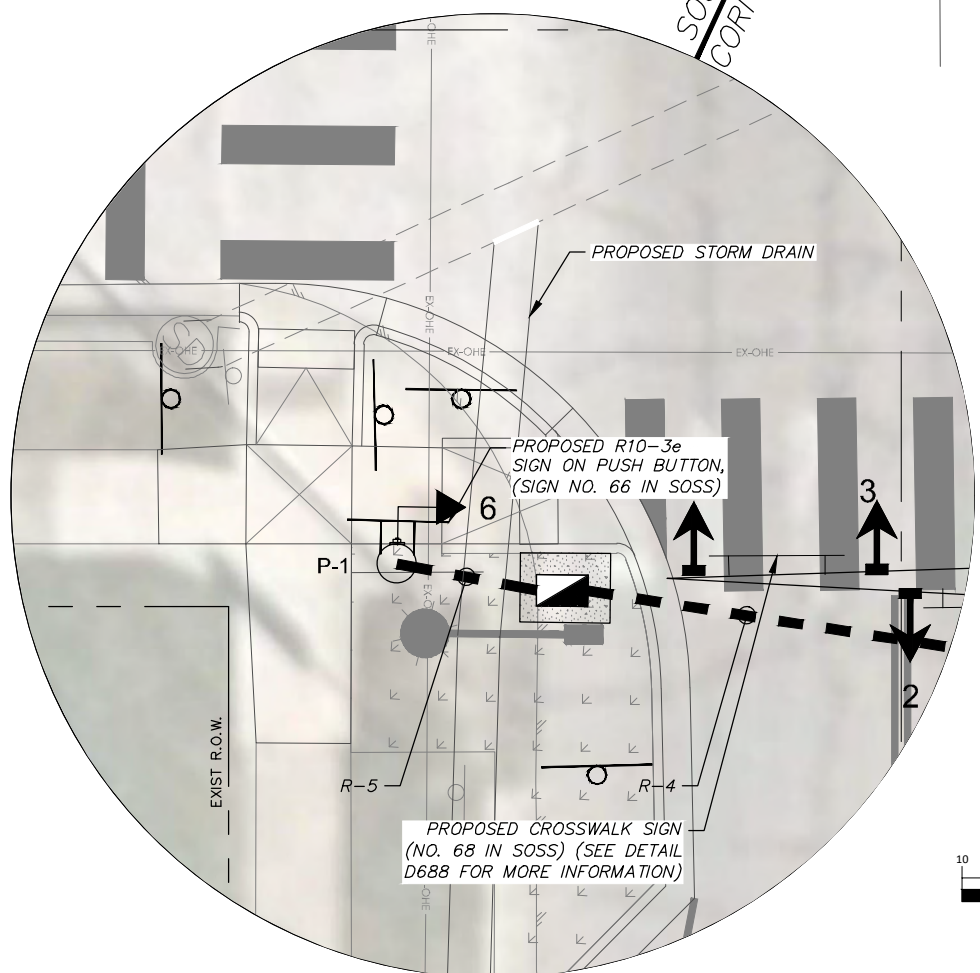
FED. RD. DIV. NO.	STATE	PROJECT NO.	HIGHWAY NO.		
6	TEXAS	STP 2021(929)TP	VA		
STATE DISTRICT	COUNTY	CONTROL NO.	SECTION NO.	JOB NO.	SHEET NO.
FTW	TARRANT	0902	90	082	273





LEGEND			
EXISTING			
	STEEL POLE & MAST ARM		SIGNAL CONDUIT RUN (R)
	PEDESTAL POLE		352i ATC CABINET / 2070 ATC CONTROLLER
	SIGNAL HEAD & No.		TRANSFORMER
	PEDESTRIAN SIGNAL & No.		POWER SERVICE
	SMALL/LARGE GROUND BOX		
	LUMINAIRE		
PROPOSED			
	STEEL POLE & MAST ARM		SIGNAL CONDUIT RUN (R)
	PEDESTAL POLE		352i ATC CABINET / 2070 ATC CONTROLLER
	SIGNAL HEAD & No.		TRANSFORMER
	PEDESTRIAN SIGNAL & No.		POWER SERVICE
	SMALL/LARGE GROUND BOX		CROSSWALK
	LUMINAIRE		
	SIGNS		

- NOTES:
1. ALL EXISTING PAVEMENT MARKINGS ARE TO BE REFRESHED.
 2. CONTRACTOR TO PROTECT EXISTING SIGNS TO REMAIN AND SHALL REPLACE ANY SIGNS THAT ARE DAMAGED WITHIN CONSTRUCTION LIMITS DURING THE DURATION OF THE PROJECT.
 3. SIGN ASSEMBLIES ARE TO BE HORIZONTALLY SPACED A MINIMUM OF 100 LF.
 4. RETURN ALL REMOVED SIGNS TO THE CITY.
 5. AVOID PLACING PROPOSED SIGNS BEHIND EXISTING SIGNS AND TREES THAT MAY PROHIBIT DRIVERS' LINE OF SIGHT TO VIEW PROPOSED SIGNS.
 6. CONTRACTOR TO ENSURE THAT PROPOSED MOUNTED SIGN IS ADA/TAS COMPLIANT PER SECTION FOR POST-MOUNTED PROTRUDING OBJECTS.



DONALD J. SZCZESNY

 PROJECT ENGINEER

 DATE _____

DATE	BY	REV	REVISION

		550 Bailey Avenue Suite 400 Fort Worth, TX 76107 817-335-1121	
		PROJ NO. 101264 FILE NO. K-2630	
 Texas Department of Transportation © 2021			
2018 SAFE ROUTES TO SCHOOL IMPROVEMENTS			
DETAILED HAWK SIGNAL LAYOUT			
W.J. TURNER ELEMENTARY SCHOOL			
FED. RD. DIV. NO.	STATE	PROJECT NO.	HIGHWAY NO.
6	TEXAS	STP 2021(929)TP	VA
STATE DISTRICT	COUNTY	CONTROL NO.	SECTION NO.
FTW	TARRANT	0902	90
			JOB NO.
			082
			SHEET NO.
			274

ELECTRICAL SERVICES DATA SHEET

Elec. Service No.	Sheet No.	Electrical Service Description	Service Conduit Size	Service Conductors No./Size	Safety Switch Amps	Main Ckt. Bkr. Pole/Amp	Two-Pole Contactor Amps	Panelbd/ Loadcenter Amp Rating	Circuit No.	Branch Ckt. Bkr. Pole/Amps	Branch Circuit Amps	KVA Load
B	273	ELEC SERV TY D(120/240)060(N/S)AL(E)PS(U)	2"	3#6	N/A	2P/60	30	70	SIGNAL LIGHTS	2P/50 2P/20	40 2	5.3

SUMMARY OF SIGNAL CONDUIT AND CABLES

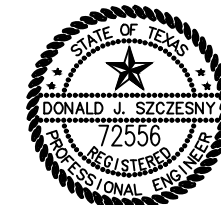
CONDUIT		LENGTH	TYPE	GROUND	POLES	PB	SERVICE	SERVICE	ILLUM	
RUN NO.	PROPOSED	(FEET)	BORE (B) TRENCH (T) EXISTING (E) OVERHEAD (OH)	# BARE	10 COND. #14 AWG	2 COND. #14 AWG	#6 XHHW BLACK	#6 XHHW WHITE	TRAY CABLE (LUMINAIRE)	
R-1	2"	5	T	PROVIDED BY ONCOR						
R-2	2"	20	T	1			1	1	1	
R-3	3"	5	T	1	1	1				
R-4	3"	35	B	1	1	1				
R-5	3"	10	T	1	1	1				
CABLE TOTALS (LF)				70	50	50	20	20	20	
CONDUIT TOTALS (LF)				Notes:						
2" TRENCH		25	This chart does not reflect the quantities of cable inside the poles and mast arms.							
3" TRENCH		15	T = Trench, B = Bore, RM = Rigid Metal, OH = Overhead							
3" BORE		35								

POLE AND HEAD CHART

POLE NUMBERS →	T-1					P-1		CABLE TOTALS ↓	
MAST ARM LENGTH (FT)	28					PED			
FOUNDATION TYPE	30-A					24-A			
WITH LUMINAIRES	YES					NO			
WITH ILSN	NO					N/A			
DETECTION	NO					N/A			
PREEMPTION	NO					N/A			
COMMS/SSR	NO					N/A			
SIZE OF LENS	12"					N/A			
SIGNAL TYPE	HAWK	HAWK	HAWK	HAWK	PED	PED			
SIGNAL FACE NO.	1	2	3	4	5	6			
LED SIGNAL INDICATIONS	R, R	R, R	R, R	R, R	W	W			
	Y	Y	Y	Y	DW	DW			
EXISTING									
PROPOSED	X	X	X	X	X	X			
PED HEADS	1					1			
PUSHBUTTONS (APS)	1					1			
CABLE/WIRE INSIDE POLE AND MAST ARM (FEET)									
POLE NUMBERS →	T-1					P-1			
7 COND. #14 AWG	200							200	
5 COND. #14 AWG	15					15		30	
3 COND. #14 AWG	5					5		10	
TRAY CABLE (ILLUM)	40							40	

LOCATION DATA

POLE #	COORDINATE (NORTH)	COORDINATE (EAST)
T-1	6977570.95	2311745.29
P-1	6977540.38	2311714.61



Donald J. Szczesny
 PROJECT ENGINEER
 DATE 7/9/21

DATE	BY	REV	REVISION

DUNAWAY 550 Bailey Avenue
 Suite 400
 Fort Worth, TX 76107
 817-335-1121
(TX REG-F-1114)



PROJ NO. 101264 FILE NO. K-2630

Texas Department of Transportation
 © 2021

2018 SAFE ROUTES TO SCHOOL IMPROVEMENTS

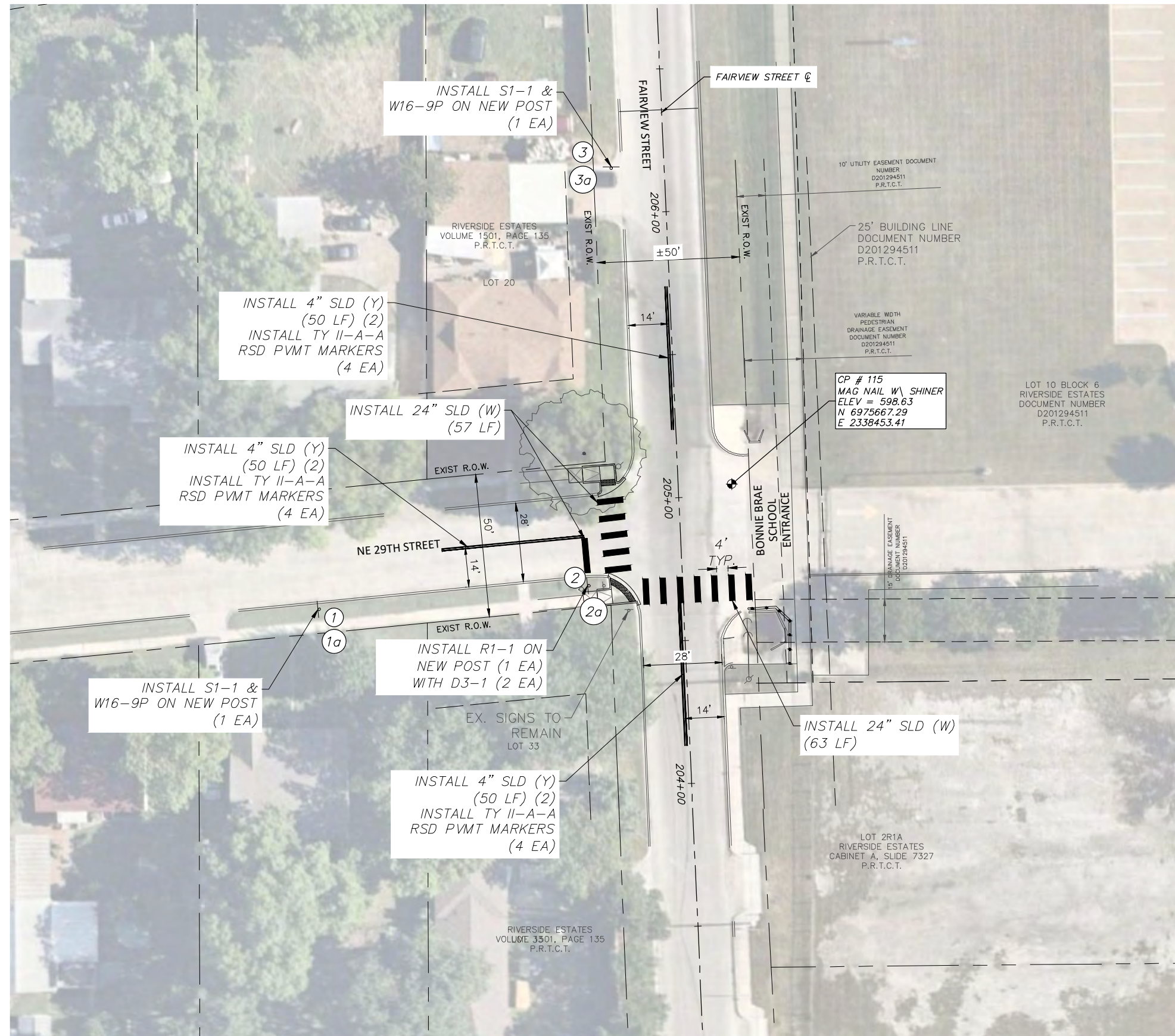
DESIGN CHARTS

W.J. TURNER ELEMENTARY SCHOOL

FED. RD. DIV. NO.	STATE	PROJECT NO.	HIGHWAY NO.		
6	TEXAS	STP 2021(929)TP	VA		
STATE DISTRICT	COUNTY	CONTROL NO.	SECTION NO.	JOB NO.	SHEET NO.
FTW	TARRANT	0902	90	082	275

FULL PATH: G:\Production\500\002600\2684\002\Civil\Drawings\Plot Sheets\SGPM PLAN BB

FILENAME: SGPM-PL-BB.dwg
 PLOTTED BY: LEE MONASTESSE
 PLOTTED WITH: _DWG TO PDF.PC3

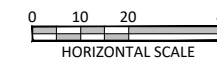


SIGNAGE SUMMARY

TYPE	SIZE	TYPE	QUANTITY
R1-1	30"x30"	STOP SIGN	1
S1-1	30"x30"	SCHOOL SIGN	2
W16-9P	24"x12"	AHEAD SIGN	2
D3-1	VARIABLE	STREET NAME SIGN	2
TOTAL			7

NOTE:

ALL SCHOOL SIGNS TO BE FLUORESCENT YELLOW-GREEN (FYG).



PROJECT ENGINEER
 JOSHUA WRIGHT
 DATE 7/9/2021

NOTES:

- ALL EXISTING PAVEMENT MARKINGS ARE TO BE REFRESHED.
- CONTRACTOR TO PROTECT EXISTING SIGNS TO REMAIN AND SHALL REPLACE ANY SIGNS THAT ARE DAMAGED WITHIN CONSTRUCTION LIMITS DURING THE DURATION OF THE PROJECT.
- SIGN ASSEMBLIES ARE TO BE HORIZONTALLY SPACED A MINIMUM OF 100 LF, UNLESS OTHERWISE NOTED.
- RETURN ALL REMOVED SIGNS TO THE CITY. CONTACT TARIK MCINTYRE (TPW FIELD OPERATIONS SUPERVISOR), 817-392-8101 FOR DROP OFF INFORMATION.
- AVOID PLACING PROPOSED SIGNS BEHIND EXISTING SIGNS AND TREES THAT MAY PROHIBIT DRIVERS' LINE OF SIGHT TO VIEW PROPOSED SIGNS.
- CONTRACTOR TO ENSURE THAT PROPOSED MOUNTED SIGN IS ADA/TAS COMPLIANT PER SECTION FOR POST-MOUNTED PROTRUDING OBJECTS.

DATE	BY	REV	REVISION

DUNAWAY 550 Bailey Avenue
 Suite 400
 Fort Worth, TX 76107
 817-335-1121
 (TX REG #1114)

FORT WORTH
 PROJ NO. 101264 FILE NO. K-2630

Texas Department of Transportation
 © 2021

2018 SAFE ROUTES TO SCHOOL IMPROVEMENTS

**FAIRVIEW ST & NE 29TH ST
 SIGNAGE & PAVEMENT MARKING
 BONNIE BRAE ELEMENTARY SCHOOL**

FED.RD. DIV. NO.	STATE	PROJECT NO.	HIGHWAY NO.		
6	TEXAS	STP 2021(929)TP	VA		
STATE DISTRICT	COUNTY	CONTROL NO.	SECTION NO.	JOB NO.	SHEET NO.
FTW	TARRANT	0902	90	082	276

FULL PATH: G:\Production\500\002600\2684\002\Civil\Drawings\Plot Sheets\SGPM PLAN BB

FILENAME: SGPM-PL-BB.dwg
 PLOTTED BY: LEE MONASTESSE
 PLOTTED WITH: _DWG TO PDF.PC3

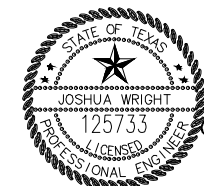


SIGNAGE SUMMARY

TYPE	SIZE	TYPE	QUANTITY
S1-1	30"x30"	SCHOOL SIGN	4
W16-7P	24"x12"	DIAGONAL ARROW	2
W16-9P	24"x12"	AHEAD SIGN	2
TOTAL			8

NOTE:

ALL SCHOOL SIGNS TO BE FLUORESCENT YELLOW-GREEN (FYG).



Joshua Wright
 PROJECT ENGINEER
 DATE: 7/9/2021

NOTES:

- ALL EXISTING PAVEMENT MARKINGS ARE TO BE REFRESHED.
- CONTRACTOR TO PROTECT EXISTING SIGNS TO REMAIN AND SHALL REPLACE ANY SIGNS THAT ARE DAMAGED WITHIN CONSTRUCTION LIMITS DURING THE DURATION OF THE PROJECT.
- SIGN ASSEMBLIES ARE TO BE HORIZONTALLY SPACED A MINIMUM OF 100 LF, UNLESS OTHERWISE NOTED.
- RETURN ALL REMOVED SIGNS TO THE CITY. CONTACT TARIK MCINTYRE (TPW FIELD OPERATIONS SUPERVISOR), 817-392-8101 FOR DROP OFF INFORMATION.
- AVOID PLACING PROPOSED SIGNS BEHIND EXISTING SIGNS AND TREES THAT MAY PROHIBIT DRIVERS' LINE OF SIGHT TO VIEW PROPOSED SIGNS.
- CONTRACTOR TO ENSURE THAT PROPOSED MOUNTED SIGN IS ADA/TAS COMPLIANT PER SECTION FOR POST-MOUNTED PROTRUDING OBJECTS.

DATE	BY	REV	REVISION

DUNAWAY 550 Bailey Avenue
 Suite 400
 Fort Worth, TX 76107
 817-335-1121
 (TX REG #1114)

FORT WORTH
 PROJ NO. 101264 FILE NO. K-2630

Texas Department of Transportation
 © 2021

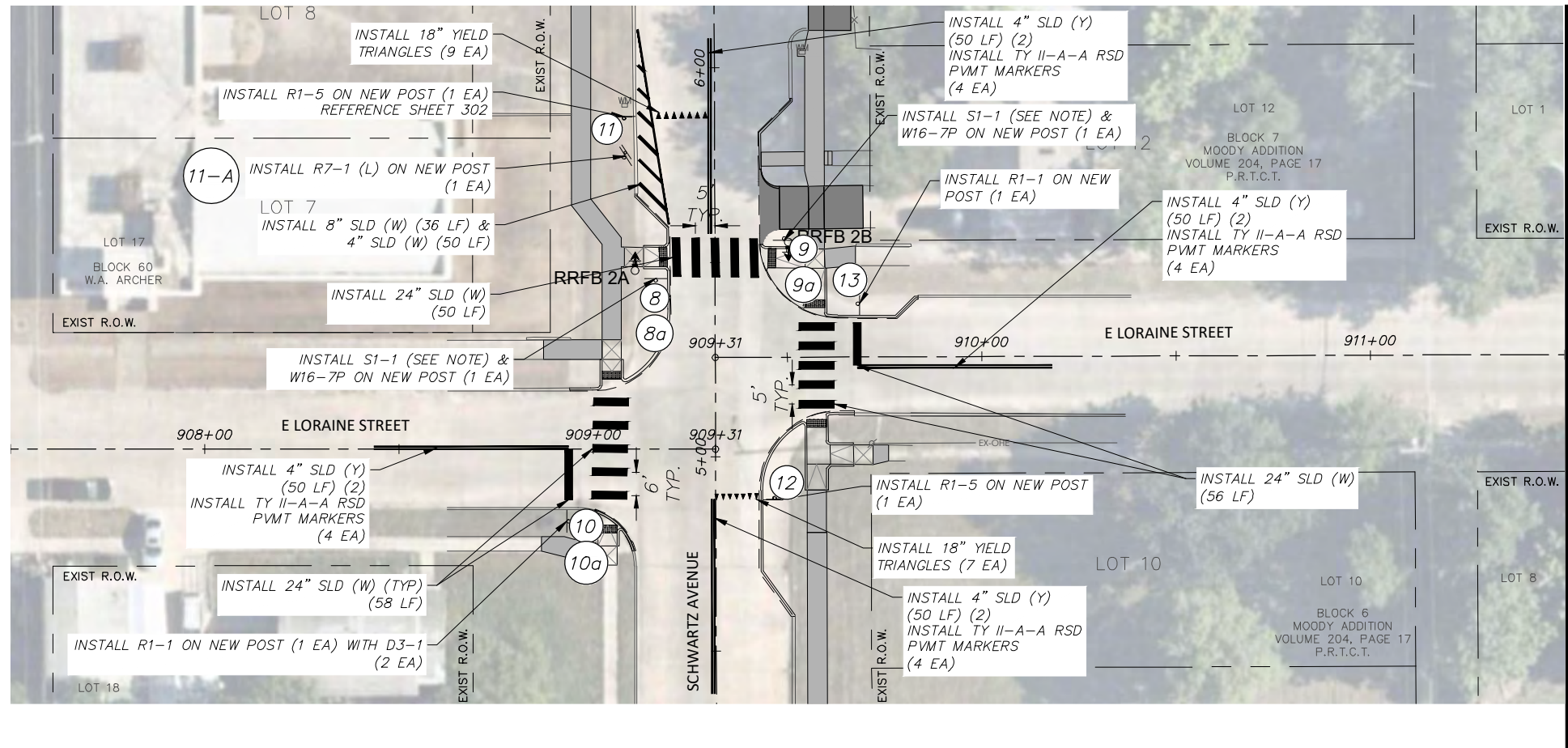
2018 SAFE ROUTES TO SCHOOL IMPROVEMENTS

**MESQUITE RD & PREMIER ST
 SIGNAGE & PAVEMENT MARKING
 BONNIE BRAE ELEMENTARY SCHOOL**

FED. RD. DIV. NO.	STATE	PROJECT NO.	HIGHWAY NO.		
6	TEXAS	STP 2021(929)TP	VA		
STATE DISTRICT	COUNTY	CONTROL NO.	SECTION NO.	JOB NO.	SHEET NO.
FTW	TARRANT	0902	90	082	277

FULL PATH: G:\Production\500\002600\2684\002\Civil\Drawings\Plot Sheets\SGPM PLAN DH

FILENAME: SGPM-PL-DH.dwg
 PLOTTED BY: LEE MONASTESSE
 PLOTTED WITH: _DWG TO PDF.PC3



MATCH LINE STA 911+50

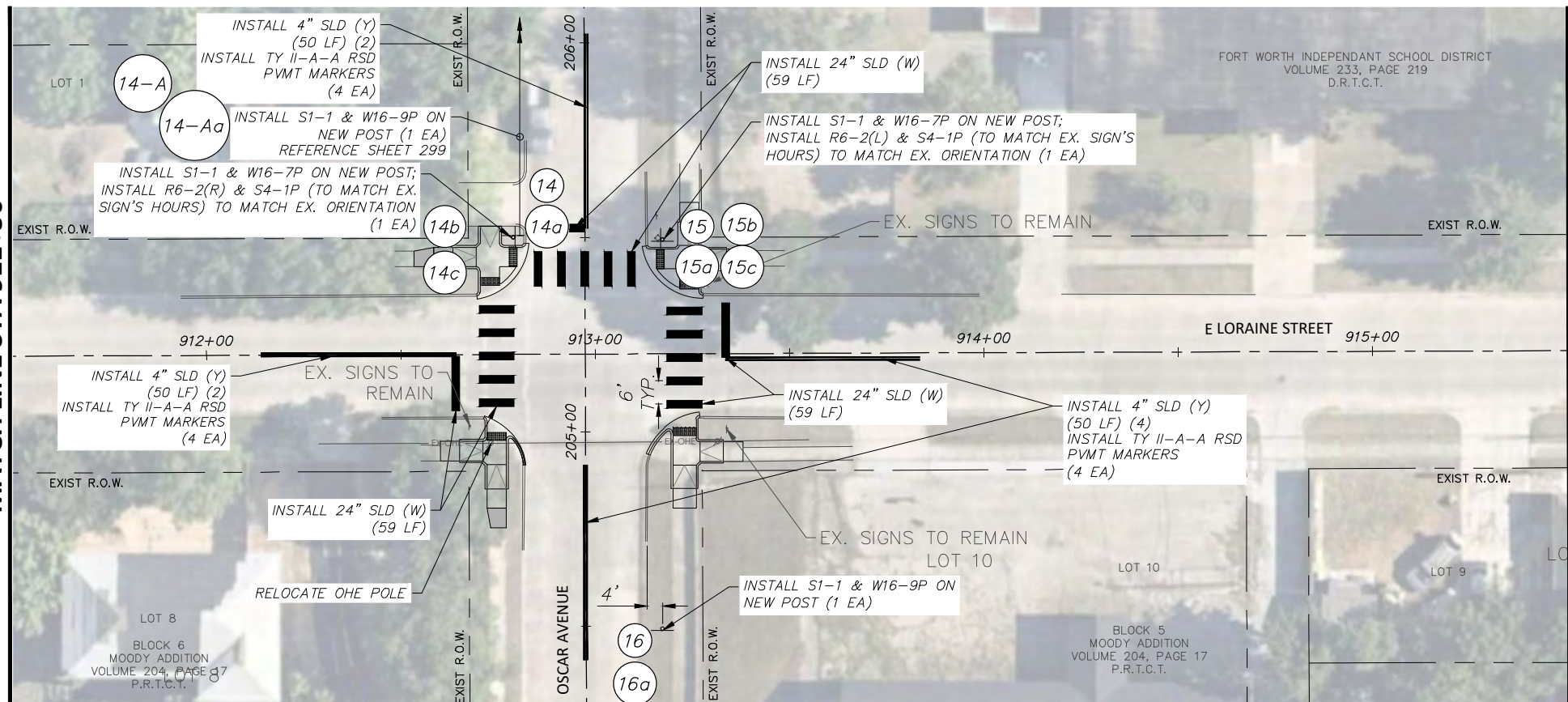
SIGNAGE SUMMARY

TYPE	SIZE	TYPE	QUANTITY
R1-1	30"x30"	STOP SIGN	2
R1-3P	18"x6"	ALL WAY (PLAQUE)	0
R1-5	36"x36"	YIELD HERE TO PEDESTRIANS	2
R2-1	24"x30"	SPEED LIMIT	0
R5-1	36"x36"	DO NOT ENTER	0
R6-2	18"x24"	ONE WAY	2
R7-1	12"x18"	PARKING RESTRICTIONS	1
S1-1	30"x30"	SCHOOL SIGN	6
S4-1P	24"x8"	SCHOOL HOURS SIGN	2
S4-6P	24"x10"	MON-FRI	0
W16-7P	24"x12"	DIAGONAL ARROW	4
W16-9P	24"x12"	AHEAD SIGN	2
D3-1	VARIABLE	STREET NAME SIGN	2
TOTAL			23

(8)(9) INSTALL S1-1 PER TxDOT SPECIAL SPECIFICATION ITEM 6227 ON NEW POST WITH W16-7P

NOTE:
 ALL SCHOOL SIGNS TO BE FLUORESCENT YELLOW-GREEN (FYG).

REFER TO SUMMARY OF SMALL SIGNS (SOSS), SHEET 12, FOR VISUAL & POST TYPE FOR EACH SIGN.



MATCH LINE STA 911+50

MATCH LINE STA 915+50



- NOTES:
- ALL EXISTING PAVEMENT MARKINGS ARE TO BE REFRESHED.
 - CONTRACTOR TO PROTECT EXISTING SIGNS TO REMAIN AND SHALL REPLACE ANY SIGNS THAT ARE DAMAGED WITHIN CONSTRUCTION LIMITS DURING THE DURATION OF THE PROJECT.
 - SIGN ASSEMBLIES ARE TO BE HORIZONTALLY SPACED A MINIMUM OF 100 LF.
 - RETURN ALL REMOVED SIGNS TO THE CITY.
 - AVOID PLACING PROPOSED SIGNS BEHIND EXISTING SIGNS AND TREES THAT MAY PROHIBIT DRIVERS' LINE OF SIGHT TO VIEW PROPOSED SIGNS.
 - CONTRACTOR TO ENSURE THAT PROPOSED MOUNTED SIGN IS ADA/TAS COMPLIANT PER SECTION FOR POST-MOUNTED PROTRUDING OBJECTS.

DATE	BY	REV	REVISION

550 Bailey Avenue
 Suite 400
 Fort Worth, TX 76107
 817-335-1121

PROJ NO. 101264 FILE NO. K-2630

Texas Department of Transportation
 © 2021

2018 SAFE ROUTES TO SCHOOL IMPROVEMENTS

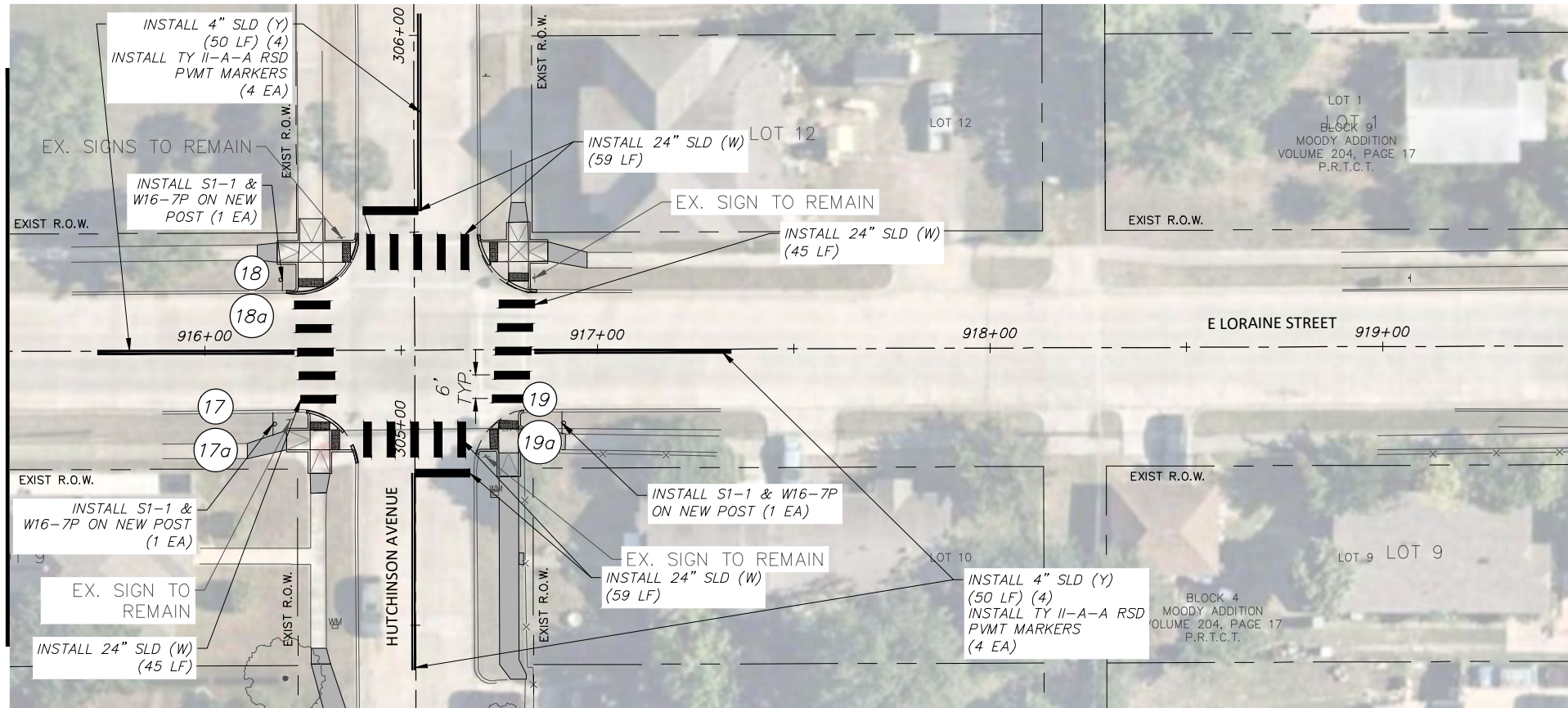
LORAIN ST SIGNAGE & PAVEMENT MARKINGS
DIAMOND HILL ELEMENTARY SCHOOL

FED.RD. DIV. NO.	STATE	PROJECT NO.	HIGHWAY NO.		
6	TEXAS	STP 2021(929)TP	VA		
STATE DISTRICT	COUNTY	CONTROL NO.	SECTION NO.	JOB NO.	SHEET NO.
FTW	TARRANT	0902	90	082	278

FULL PATH: G:\Production\500\002600\2684\002\Civil\Drawings\Plot Sheets\SGPM PLAN DH

FILENAME: SGPM-PL-DH.dwg
 PLOTTED BY: LEE MONASTESSE
 PLOTTED WITH: _DWG TO PDF.PC3

MATCH LINE STA 915+50



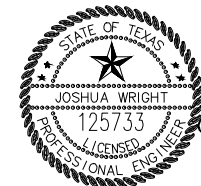
SIGNAGE SUMMARY

TYPE	SIZE	TYPE	QUANTITY
R1-1	30"x30"	STOP SIGN	0
R1-3P	18"x6"	ALL WAY (PLAQUE)	0
R5-1	36"x36"	DO NOT ENTER	0
R6-2	18"x24"	ONE WAY	0
S1-1	30"x30"	SCHOOL SIGN	3
S4-1P	24"x8"	SCHOOL HOURS SIGN	0
S4-6P	24"x10"	MON-FRI	0
W16-7P	24"x12"	DIAGONAL ARROW	3
W16-9P	24"x12"	AHEAD SIGN	0
D3-1	VARIABLE	STREET NAME SIGN	0
TOTAL			6

NOTE:

ALL SCHOOL SIGNS TO BE FLUORESCENT YELLOW-GREEN (FYG).

REFER TO SUMMARY OF SMALL SIGNS (SOSS), SHEET 12, FOR VISUAL & POST TYPE FOR EACH SIGN.



PROJECT ENGINEER
 DATE 7/9/2021

NOTES:

- ALL EXISTING PAVEMENT MARKINGS ARE TO BE REFRESHED.
- CONTRACTOR TO PROTECT EXISTING SIGNS TO REMAIN AND SHALL REPLACE ANY SIGNS THAT ARE DAMAGED WITHIN CONSTRUCTION LIMITS DURING THE DURATION OF THE PROJECT.
- SIGN ASSEMBLIES ARE TO BE HORIZONTALLY SPACED A MINIMUM OF 100 LF.
- RETURN ALL REMOVED SIGNS TO THE CITY.
- AVOID PLACING PROPOSED SIGNS BEHIND EXISTING SIGNS AND TREES THAT MAY PROHIBIT DRIVERS' LINE OF SIGHT TO VIEW PROPOSED SIGNS.
- CONTRACTOR TO ENSURE THAT PROPOSED MOUNTED SIGN IS ADA/TAS COMPLIANT PER SECTION FOR POST-MOUNTED PROTRUDING OBJECTS.

DATE	BY	REV	REVISION

DUNAWAY 550 Bailey Avenue
 Suite 400
 Fort Worth, TX 76107
 (TX REG #1114) 817-335-1121

FORT WORTH
 PROJ NO. 101264 FILE NO. K-2630

Texas Department of Transportation
 © 2021

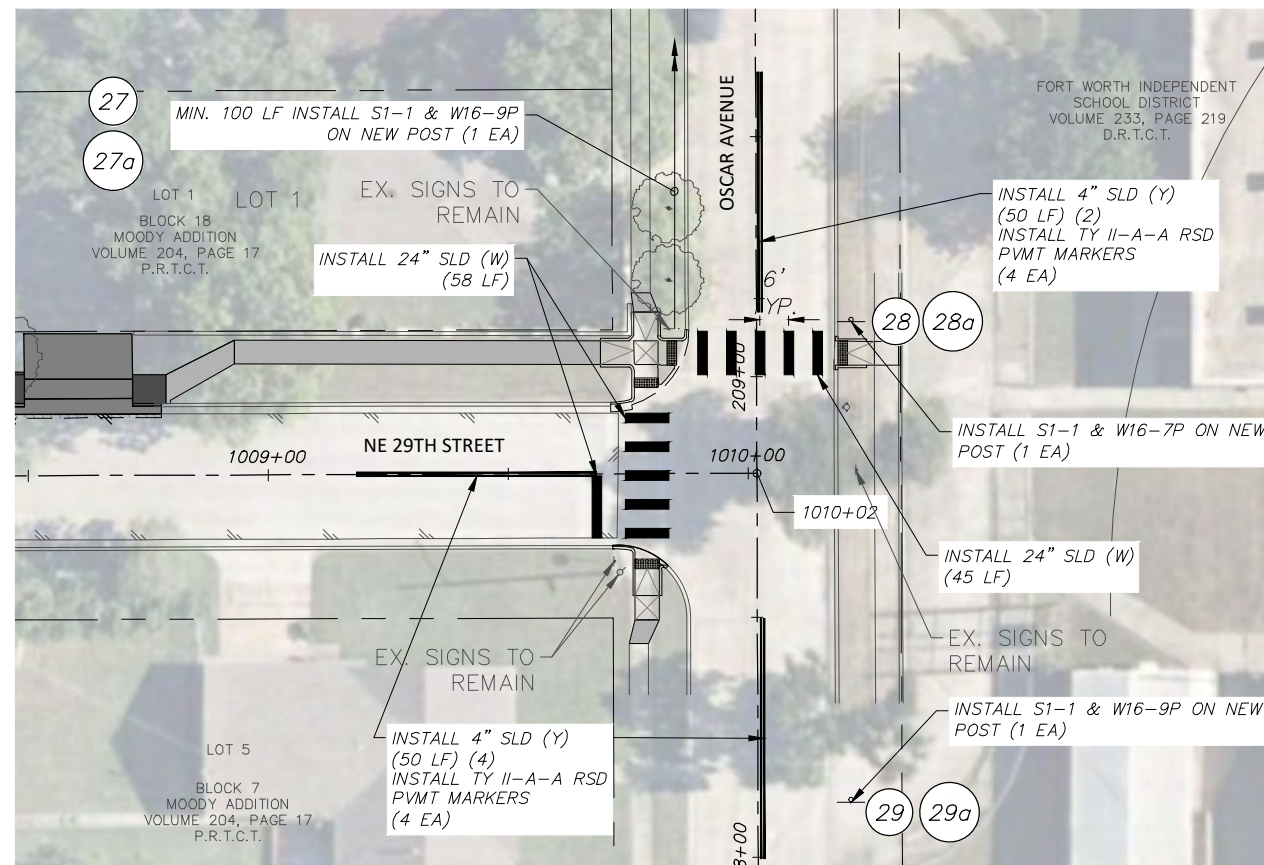
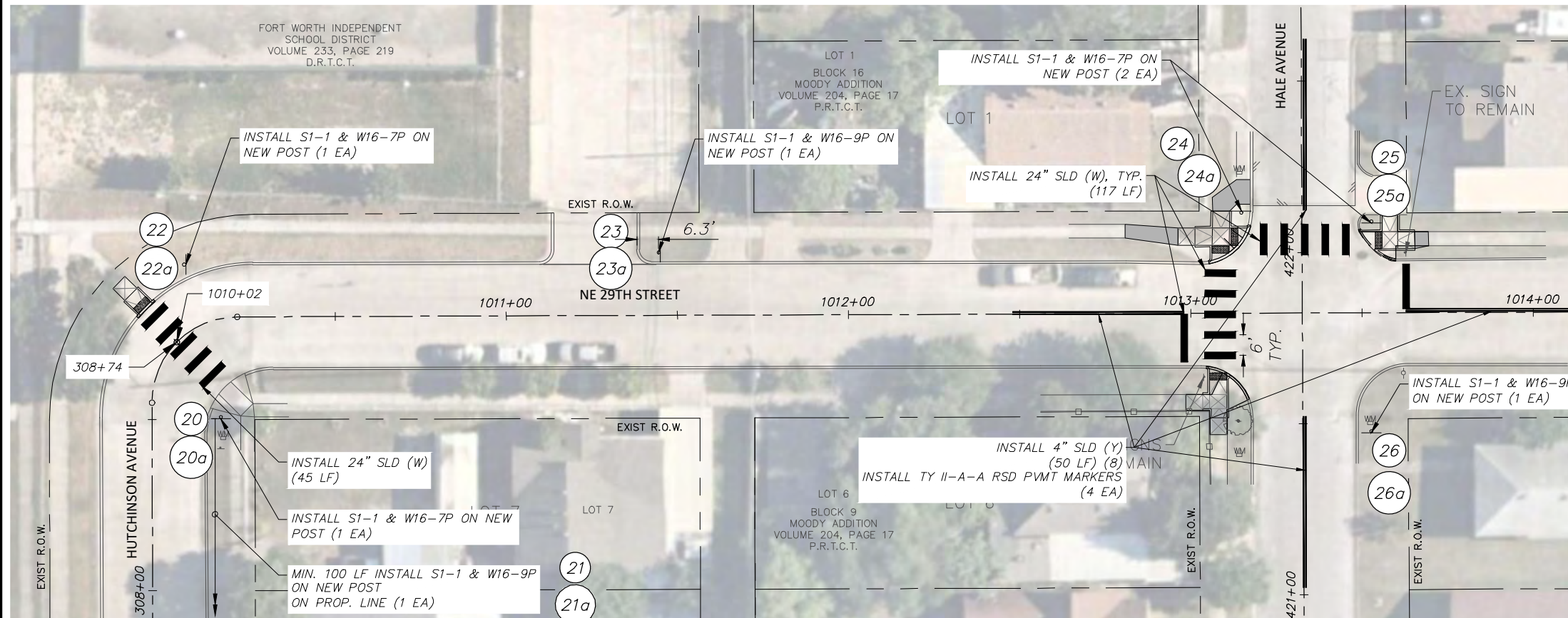
2018 SAFE ROUTES TO SCHOOL IMPROVEMENTS

LORAIN ST SIGNAGE & PAVEMENT MARKINGS
DIAMOND HILL ELEMENTARY SCHOOL

FED. RD. DIV. NO.	STATE	PROJECT NO.		HIGHWAY NO.	
6	TEXAS	STP 2021(929)TP		VA	
STATE DISTRICT	COUNTY	CONTROL NO.	SECTION NO.	JOB NO.	SHEET NO.
FTW	TARRANT	0902	90	082	279

FULL PATH: G:\Production\500\002600\2684\002\Civil\Drawings\Plot Sheets\SGPM PLAN DH

FILENAME: SGPM-PL-DH.dwg
 PLOTTED BY: LEE MONASTESSE
 PLOTTED WITH: _DWG TO PDF.PC3



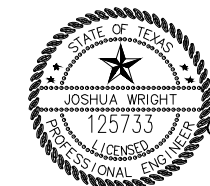
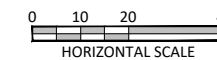
SIGNAGE SUMMARY

TYPE	SIZE	TYPE	QUANTITY
R1-1	30"x30"	STOP SIGN	0
R1-3P	18"x6"	ALL WAY (PLAQUE)	0
R5-1	36"x36"	DO NOT ENTER	0
R6-2	18"x24"	ONE WAY	0
S1-1	30"x30"	SCHOOL SIGN	10
S4-1P	24"x8"	SCHOOL HOURS SIGN	0
S4-6P	24"x10"	MON-FRI	0
W16-7P	24"x12"	DIAGONAL ARROW	5
W16-9P	24"x12"	AHEAD SIGN	5
D3-1	VARIABLE	STREET NAME SIGN	0
TOTAL			20

NOTE:

ALL SCHOOL SIGNS TO BE FLUORESCENT YELLOW-GREEN (FYG).

REFER TO SUMMARY OF SMALL SIGNS (SOSS), SHEET 12, FOR VISUAL & POST TYPE FOR EACH SIGN.



PROJECT ENGINEER
 JOSHUA WRIGHT
 DATE 7/9/2021

NOTES:

- ALL EXISTING PAVEMENT MARKINGS ARE TO BE REFRESHED.
- CONTRACTOR TO PROTECT EXISTING SIGNS TO REMAIN AND SHALL REPLACE ANY SIGNS THAT ARE DAMAGED WITHIN CONSTRUCTION LIMITS DURING THE DURATION OF THE PROJECT.
- SIGN ASSEMBLIES ARE TO BE HORIZONTALLY SPACED A MINIMUM OF 100 LF.
- RETURN ALL REMOVED SIGNS TO THE CITY.
- AVOID PLACING PROPOSED SIGNS BEHIND EXISTING SIGNS AND TREES THAT MAY PROHIBIT DRIVERS' LINE OF SIGHT TO VIEW PROPOSED SIGNS.
- CONTRACTOR TO ENSURE THAT PROPOSED MOUNTED SIGN IS ADA/TAS COMPLIANT PER SECTION FOR POST-MOUNTED PROTRUDING OBJECTS.

DATE	BY	REV	REVISION

DUNAWAY 550 Bailey Avenue
 Suite 400
 Fort Worth, TX 76107
 (TX REG #1114) 817-335-1121

FORT WORTH
 PROJ NO. 101264 FILE NO. K-2630

Texas Department of Transportation
 © 2021

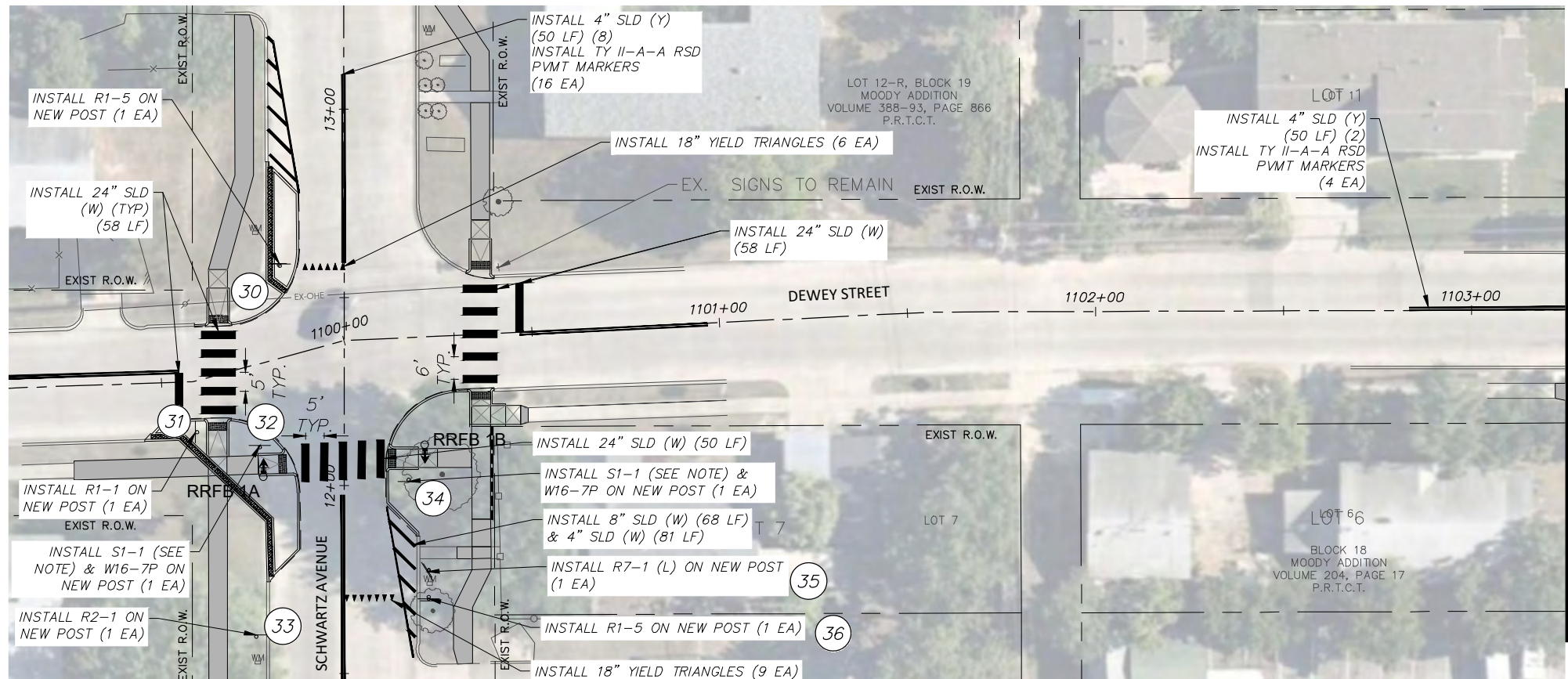
2018 SAFE ROUTES TO SCHOOL IMPROVEMENTS

NE 29TH ST SIGNAGE & PAVEMENT MARKINGS
DIAMOND HILL ELEMENTARY SCHOOL

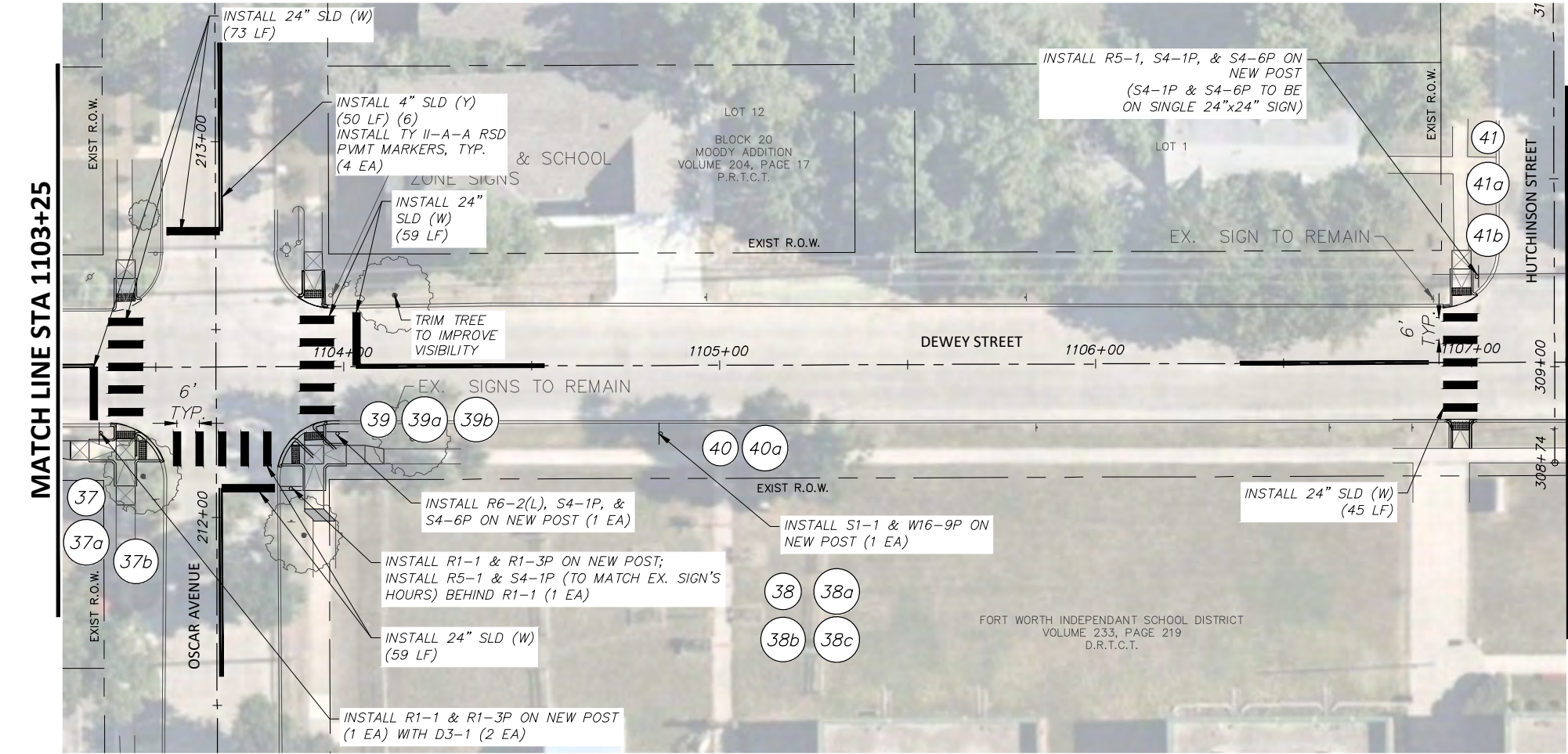
FED. RD. DIV. NO.	STATE	PROJECT NO.	HIGHWAY NO.		
6	TEXAS	STP 2021(929)TP	VA		
STATE DISTRICT	COUNTY	CONTROL NO.	SECTION NO.	JOB NO.	SHEET NO.
FTW	TARRANT	0902	90	082	280

FULL PATH: G:\Production\500\002600\2684\002\Civil\Drawings\Plot Sheets\SGPM PLAN DH

FILENAME: SGM-PL-DH.dwg
 PLOTTED BY: LEE MONASTESSE
 PLOTTED WITH: _DWG TO PDF.PC3



MATCH LINE STA 1103+25



MATCH LINE STA 1107+25

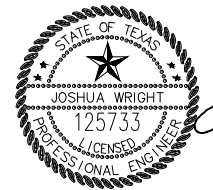
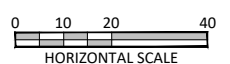
SIGNAGE SUMMARY

TYPE	SIZE	TYPE	QUANTITY
R1-1	30"x30"	STOP SIGN	3
R1-3P	18"x6"	ALL WAY (PLAQUE)	2
R1-5	36"x36"	YIELD HERE TO PEDESTRIANS	2
R2-1	24"x30"	SPEED LIMIT	1
R5-1	36"x36"	DO NOT ENTER	2
R6-2	18"x24"	ONE WAY	1
R7-1	12"x18"	PARKING RESTRICTIONS	1
S1-1	30"x30"	SCHOOL SIGN	3
S4-1P	24"x8"	SCHOOL HOURS SIGN	3
S4-6P	24"x10"	MON-FRI	2
W16-7P	24"x12"	DIAGONAL ARROW	2
W16-9P	24"x12"	AHEAD SIGN	1
D3-1	VARIABLE	STREET NAME SIGN	2
TOTAL			25

32 34 INSTALL S1-1 PER TxDOT SPECIAL SPECIFICATION ITEM 6227 ON NEW POST WITH W16-7P

NOTE:
 ALL SCHOOL SIGNS TO BE FLUORESCENT YELLOW-GREEN (FYG).

REFER TO SUMMARY OF SMALL SIGNS (SOSS), SHEET 12, FOR VISUAL & POST TYPE FOR EACH SIGN.



- NOTES:
- ALL EXISTING PAVEMENT MARKINGS ARE TO BE REFRESHED.
 - CONTRACTOR TO PROTECT EXISTING SIGNS TO REMAIN AND SHALL REPLACE ANY SIGNS THAT ARE DAMAGED WITHIN CONSTRUCTION LIMITS DURING THE DURATION OF THE PROJECT.
 - SIGN ASSEMBLIES ARE TO BE HORIZONTALLY SPACED A MINIMUM OF 100 LF.
 - RETURN ALL REMOVED SIGNS TO THE CITY.
 - AVOID PLACING PROPOSED SIGNS BEHIND EXISTING SIGNS AND TREES THAT MAY PROHIBIT DRIVERS' LINE OF SIGHT TO VIEW PROPOSED SIGNS.
 - CONTRACTOR TO ENSURE THAT PROPOSED MOUNTED SIGN IS ADA/TAS COMPLIANT PER SECTION FOR POST-MOUNTED PROTRUDING OBJECTS.

DATE	BY	REV	REVISION

DUNAWAY 550 Bailey Avenue
 Suite 400
 Fort Worth, TX 76107
 (TX REG #1114) 817-335-1121

FORT WORTH
 PROJ NO. 101264 FILE NO. K-2630

Texas Department of Transportation
 © 2021

2018 SAFE ROUTES TO SCHOOL IMPROVEMENTS

DEWEY ST SIGNAGE & PAVEMENT MARKINGS

DIAMOND HILL ELEMENTARY SCHOOL

FED. RD. DIV. NO.	STATE	PROJECT NO.	HIGHWAY NO.		
6	TEXAS	STP 2021(929)TP	VA		
STATE DISTRICT	COUNTY	CONTROL NO.	SECTION NO.	JOB NO.	SHEET NO.
FTW	TARRANT	0902	90	082	281