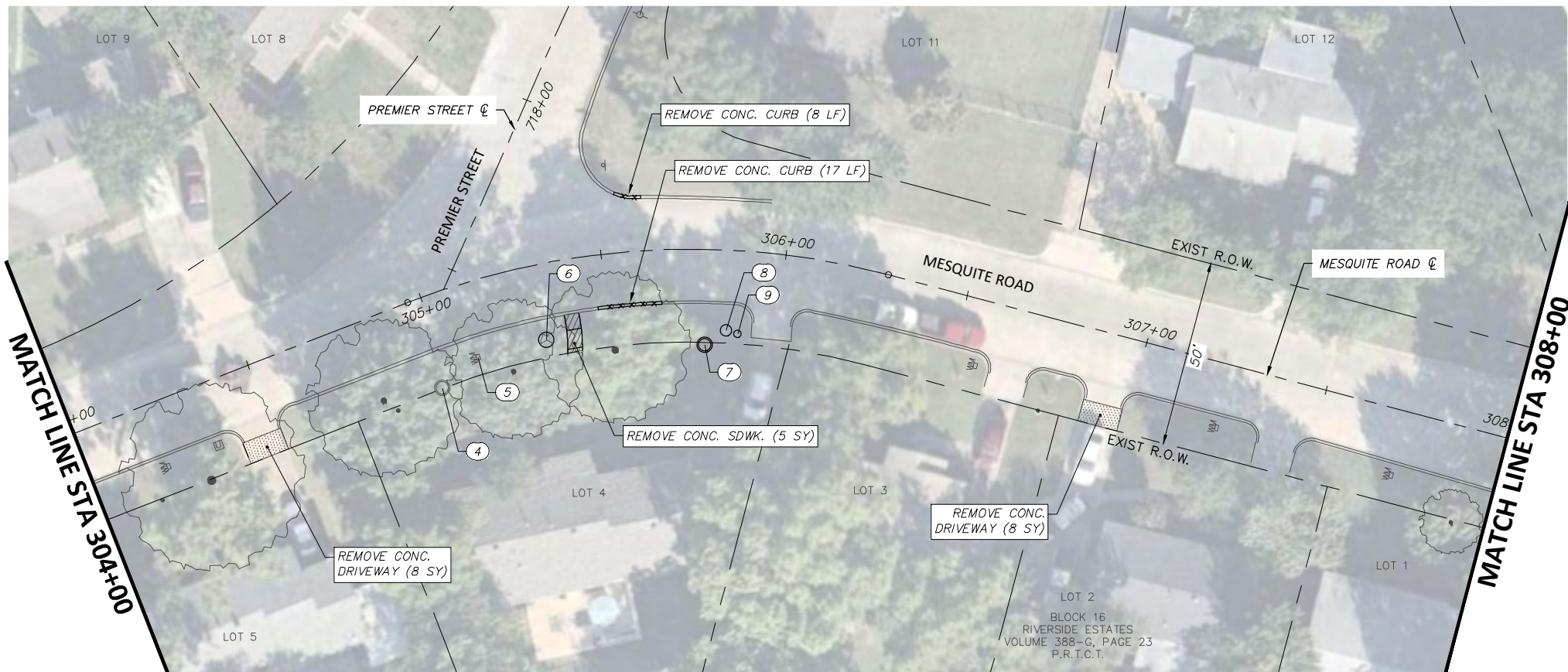


FULL PATH: G:\Production\500\002600\2684\002\Civil\Drawings\Plot Sheets\RMVL-PLAN-BRMESQUITE RD

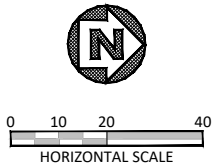
FILENAME: RMVL-PL-MQ.dwg
 PLOTTED BY: LEE MONASTESSE
 PLOTTED WITH: _DWG TO PDF.PC3



MESQUITE ROAD



MESQUITE ROAD



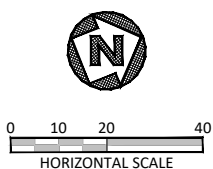
NOTE:
 RETURN ALL REMOVED SIGNS TO TPW FIELD OPERATIONS SUPERVISOR SIDNEY RUTTER (SIDNEY.RUTTER@FORTWORTHTEXAS.GOV) AT 5001 JAMES AVE, FORT WORTH, TX.
 ITEMS NOT CALLED OUT FOR REMOVAL SHALL BE CLEARED & REMOVED AS REQUIRED AND DIRECTED BY THE ENGINEER. COST TO BE INCLUDED IN PRICE BID FOR SITE CLEARING. EXISTING SITE CONDITIONS MAY VARY FROM THOSE SHOWN ON THESE PLANS.
 CONTACT TARIK MCINTYRE (TPW FIELD OPERATIONS SUPERVISOR), 817-392-8101 FOR DROP OFF INFORMATION.

REMOVAL LEGEND

- TREES TO BE REMOVED
- REMOVAL ITEMS
- ABANDONEMENT ITEMS
- ASPHALT REMOVAL
- GRAVEL REMOVAL
- CONCRETE REMOVAL
- SIDEWALK/ RAMP REMOVAL
- CONCRETE DRIVE REMOVAL

EXISTING MESQUITE RD. OBSTRUCTION CONFLICTS			
NO.	☐ STATION, OFFSET	DESCRIPTION	NOTE
1	302+46.36, 21.68 RT	TREE	PROTECT
2	302+87.50, 21.12 RT	TREE	REMOVE (32" CALIPER)
3	303+36.78, 17.27 RT	WATER METER	PROTECT
4	304+96.59, 24.81 RT	STONE PLANTER	PROTECT (ADJUST TO GRADE)
5	305+09.79, 20.22 RT	WATER METER	RELOCATE (SEE WATER METER DETAILS)
6	305+30.87, 20.39 RT	LANDSCAPE BOULDER	SALVAGE LANDSCAPE ITEMS (SEE * NOTE)
7	305+78.58, 25.70 RT	STONE PLANTER	SALVAGE LANDSCAPE ITEMS (SEE * NOTE)
8	305+84.90, 21.69 RT	LANDSCAPE BOULDER	SALVAGE LANDSCAPE ITEMS (SEE * NOTE)
9	305+88.43, 22.43 RT	LANDSCAPE BOULDER	SALVAGE LANDSCAPE ITEMS (SEE * NOTE)

* NOTE:
 LANDSCAPING ITEMS TO BE SALVAGED IN COORDINATION WITH PROPERTY OWNER



6/14/2021

 Joshua Wright

DATE	BY	REV	REVISION

DUNAWAY 550 Bailey Avenue
 Suite 400
 Fort Worth, TX 76107
 (TX REG. F-1114) 817-335-1121

FORT WORTH

PROJ NO. 101264 FILE NO. K-2630

Texas Department of Transportation
 © 2021

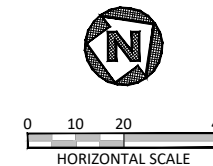
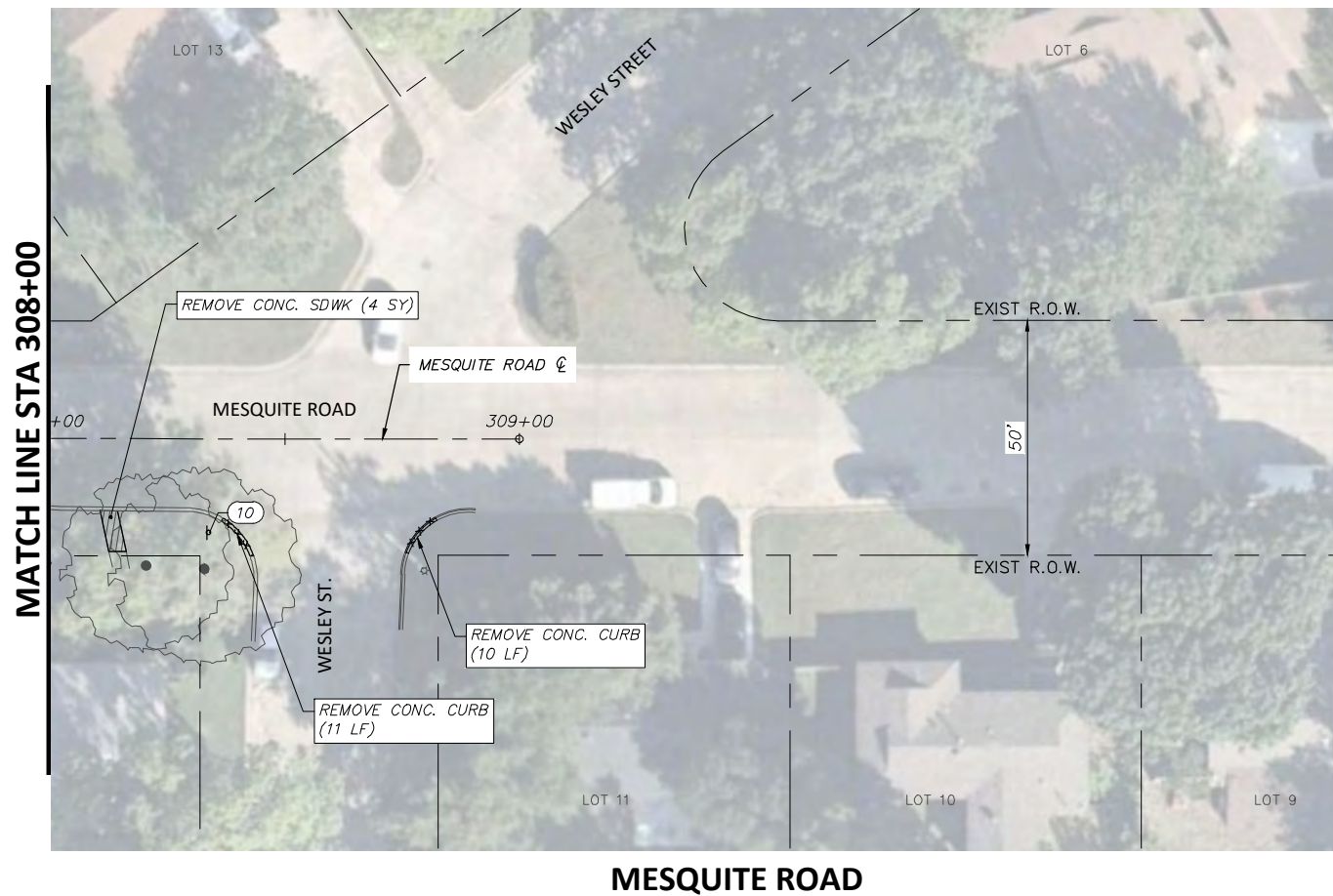
2018 SAFE ROUTES TO SCHOOL IMPROVEMENTS

MESQUITE ROAD
 REMOVALS AND UTILITY ADJUSTMENTS
 STA. 300+00.00 TO STA. 308+00.00
 BONNIE BRAE ELEMENTARY SCHOOL

FED. RD. DIV. NO.	STATE	PROJECT NO.	HIGHWAY NO.		
6	TEXAS	STP 2021(929)TP	N/A		
STATE DISTRICT	COUNTY	CONTROL NO.	SECTION NO.	JOB NO.	SHEET NO.
FTW	TARRANT	0902	90	082	42

FULL PATH: G:\Production\500\002600\2684\002\Civil\Drawings\Plot Sheets\RMVL-PLAN BR\MESQUITE RD

FILENAME: RMVL-PL-MQ.dwg
 PLOTTED BY: LEE MONASTESSE
 PLOTTED WITH: _DWG TO PDF.PC3



NOTE:
 RETURN ALL REMOVED SIGNS TO TPW FIELD OPERATIONS SUPERVISOR SIDNEY RUTTER (SIDNEY.RUTTER@FORTWORTHTEXAS.GOV) AT 5001 JAMES AVE, FORT WORTH, TX.
 ITEMS NOT CALLED OUT FOR REMOVAL SHALL BE CLEARED & REMOVED AS REQUIRED AND DIRECTED BY THE ENGINEER. COST TO BE INCLUDED IN PRICE BID FOR SITE CLEARING. EXISTING SITE CONDITIONS MAY VARY FROM THOSE SHOWN ON THESE PLANS.
 CONTACT TARIK MCINTYRE (TPW FIELD OPERATIONS SUPERVISOR), 817-392-8101 FOR DROP OFF INFORMATION.

REMOVAL LEGEND	
	TREES TO BE REMOVED
	REMOVAL ITEMS
	ABANDONMENT ITEMS
	ASPHALT REMOVAL
	GRAVEL REMOVAL
	CONCRETE REMOVAL
	SIDEWALK/ RAMP REMOVAL
	CONCRETE DRIVE REMOVAL

EXISTING MESQUITE RD. OBSTRUCTION CONFLICTS			
NO.	Q STATION, OFFSET	DESCRIPTION	NOTE
10	308+33.80, 20.08 RT	STOP SIGN	REMOVE AND RESET

DATE	BY	REV	REVISION

DUNAWAY (TX REG #1114) 550 Bailey Avenue Suite 400 Fort Worth, TX 76107 817-335-1121

FORT WORTH

PROJ NO. 101264 FILE NO. K-2630

Texas Department of Transportation © 2021

2018 SAFE ROUTES TO SCHOOL IMPROVEMENTS

MESQUITE ROAD
REMOVALS AND UTILITY ADJUSTMENTS
STA. 308+00.00 TO STA. 309+00.00
BONNIE BRAE ELEMENTARY SCHOOL

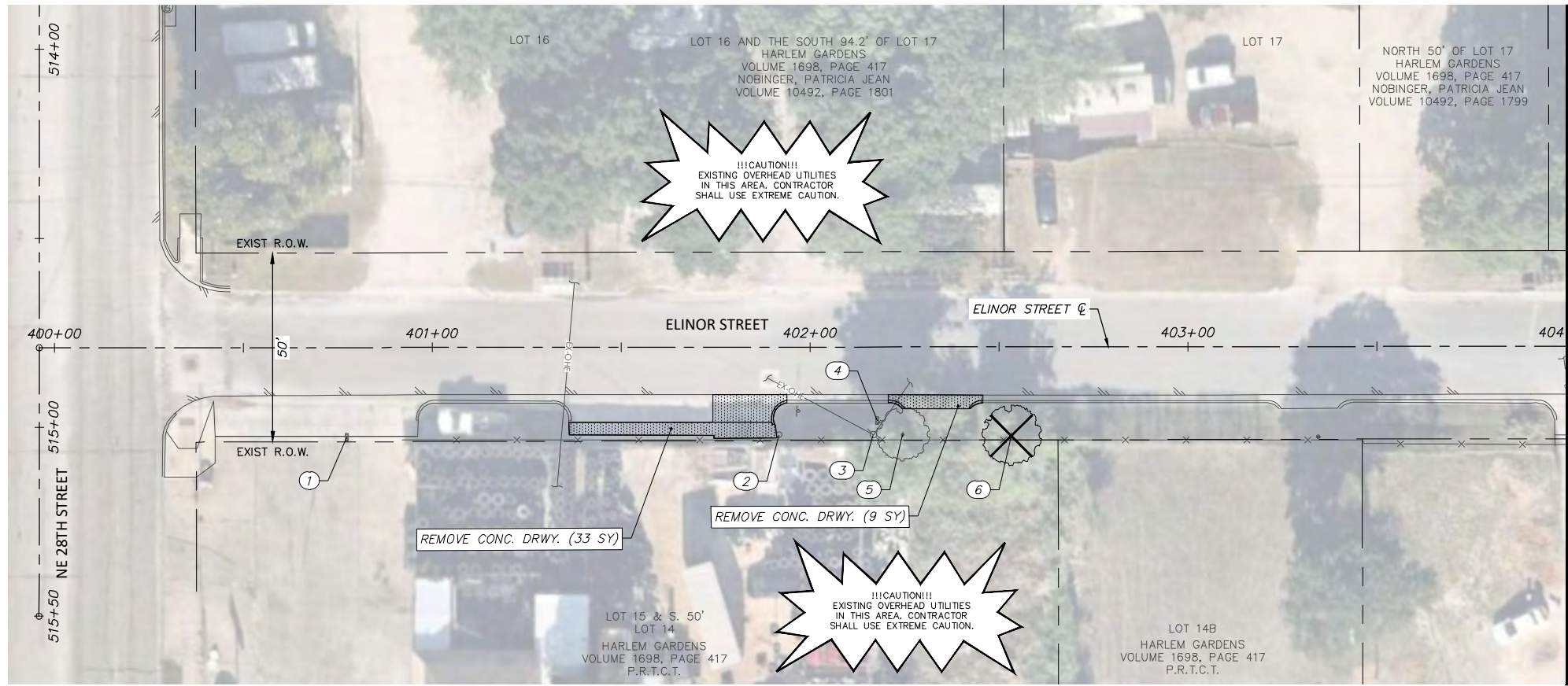
FED.RD. DIV. NO.	STATE	PROJECT NO.	HIGHWAY NO.		
6	TEXAS	STP 2021(929)TP	N/A		
STATE DISTRICT	COUNTY	CONTROL NO.	SECTION NO.	JOB NO.	SHEET NO.
FTW	TARRANT	0902	90	082	43

6/14/2021

Joshua Wright

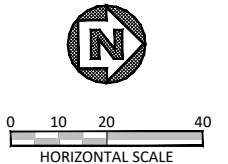
FULL PATH: G:\Production\500\002600\2684\002\Civil\Drawings\Plot Sheets\RMV-PLAN BB\ELINOR ST

FILENAME: RMV-PL-EL.dwg
 PLOTTED BY: LEE MONASTESSE
 PLOTTED WITH: _DWG TO PDF.PC3



ELINOR STREET

MATCH LINE STA 404+00



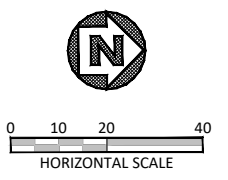
NOTE:
 RETURN ALL REMOVED SIGNS TO TPW FIELD OPERATIONS SUPERVISOR SIDNEY RUTTER (SIDNEY.RUTTER@FORTWORTHTEXAS.GOV) AT 5001 JAMES AVE, FORT WORTH, TX.
 ITEMS NOT CALLED OUT FOR REMOVAL SHALL BE CLEARED & REMOVED AS REQUIRED AND DIRECTED BY THE ENGINEER. COST TO BE INCLUDED IN PRICE BID FOR SITE CLEARING. EXISTING SITE CONDITIONS MAY VARY FROM THOSE SHOWN ON THESE PLANS.
 CONTACT TARIK MCINTYRE (TPW FIELD OPERATIONS SUPERVISOR), 817-392-8101 FOR DROP OFF INFORMATION.

REMOVAL LEGEND

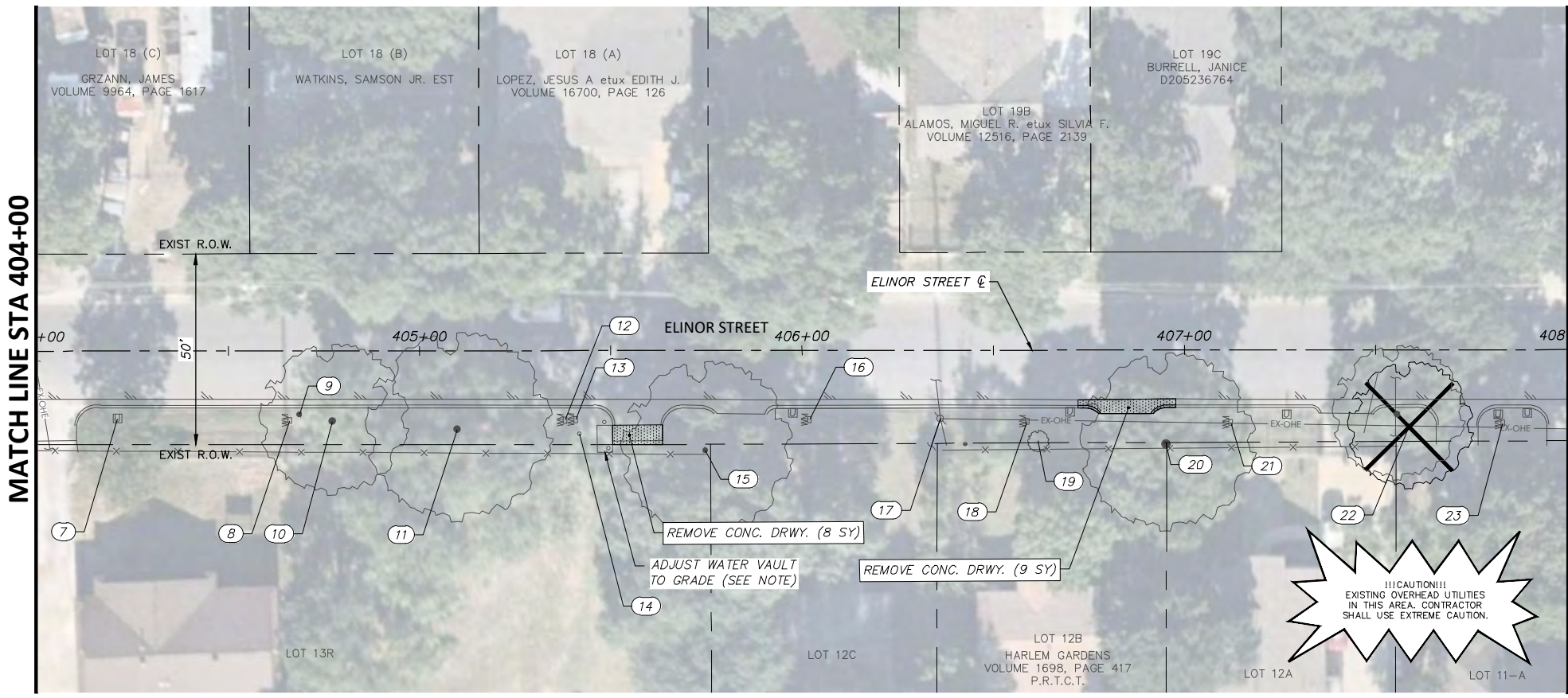
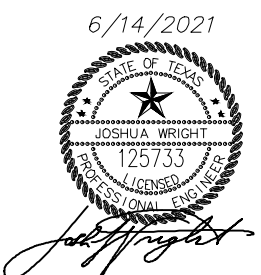
- TREES TO BE REMOVED
- REMOVAL ITEMS
- ABANDONMENT ITEMS
- ASPHALT REMOVAL
- GRAVEL REMOVAL
- CONCRETE REMOVAL
- SIDEWALK/ RAMP REMOVAL
- CONCRETE DRIVE REMOVAL

EXISTING ELINOR ST. OBSTRUCTION CONFLICTS

NO.	STATION, OFFSET	DESCRIPTION	NOTE
1	400+77.40, 23.68 RT	UTILITY VAULT	PROTECT
2	401+91.81, 23.28 RT	BOLLARD	REMOVE
3	402+16.73, 23.19 RT	OHE POLE	PROTECT
4	402+17.77, 19.46 RT	UTILITY VAULT	PROTECT
5	402+24.47, 23.22 RT	TREE	PROTECT
6	402+53.23, 23.55 RT	TREE	REMOVE (5" CALIPER)
7	404+20.90, 17.66 RT	MAILBOX	PROTECT
8	404+66.01, 18.22 RT	WATER METER	PROTECT (ADJUST TO GRADE)
9	404+68.52, 16.63 RT	TREE STUMP	REMOVE
10	404+77.14, 18.40 RT	TREE	PROTECT
11	405+09.80, 20.53 RT	TREE	PROTECT
12	405+37.99, 18.20 RT	WATER METER	PROTECT (ADJUST TO GRADE)
13	405+40.75, 18.07 RT	WATER METER	PROTECT (ADJUST TO GRADE)
14	405+41.73, 21.74 RT	FD CONNECTION	PROTECT
15	405+74.66, 26.13 RT	TREE	PROTECT
16	406+01.92, 18.14 RT	WATER METER	PROTECT (ADJUST TO GRADE)
17	406+36.16, 17.84 RT	OHE POLE	PROTECT
18	406+58.88, 18.61 RT	WATER METER	PROTECT (ADJUST TO GRADE)
19	406+61.73, 23.91 RT	TREE	PROTECT
20	406+95.21, 24.57 RT	TREE	PROTECT
21	407+12.09, 18.96 RT	WATER METER	PROTECT (ADJUST TO GRADE)
22	407+58.77, 20.15 RT	TREE	REMOVE (14" CALIPER)
23	407+83.31, 19.23 RT	WATER METER	PROTECT (ADJUST TO GRADE)



NOTE:
 CONTRACTOR TO FIELD VERIFY ELEVATION OF VAULT. CONTACT ENGINEER IF DISCREPANCY FOUND BETWEEN PLANS AND FIELD CONDITIONS.



ELINOR STREET

MATCH LINE STA 408+00

DATE	BY	REV	REVISION

DUNAWAY 550 Bailey Avenue
 Suite 400
 Fort Worth, TX 76107
 (TX REG #1114) 817-335-1121

FORT WORTH

PROJ NO. 101264 FILE NO. K-2630

Texas Department of Transportation
 © 2021

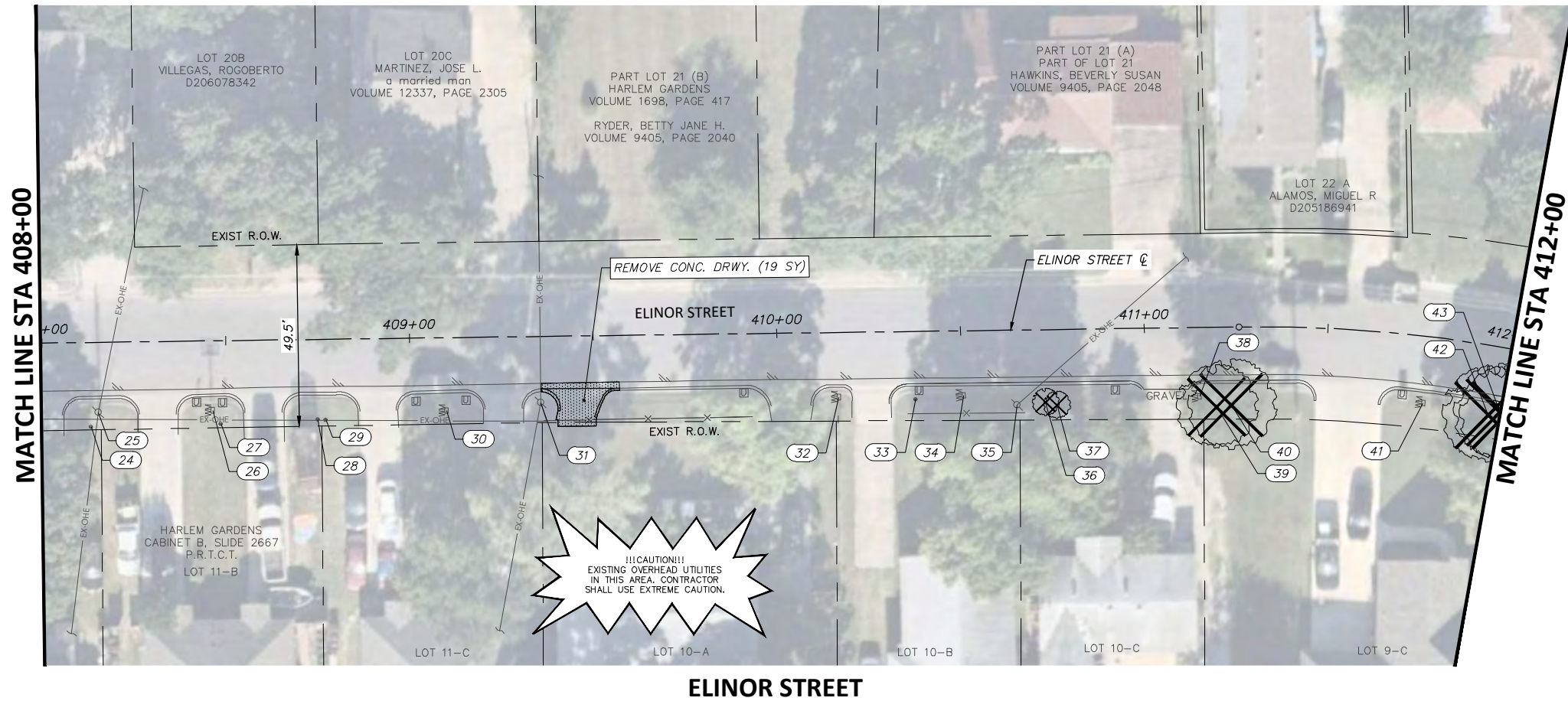
2018 SAFE ROUTES TO SCHOOL IMPROVEMENTS

ELINOR STREET
REMOVALS AND UTILITY ADJUSTMENTS
STA. 400+00.00 TO STA. 408+00.00
BONNIE BRAE ELEMENTARY SCHOOL

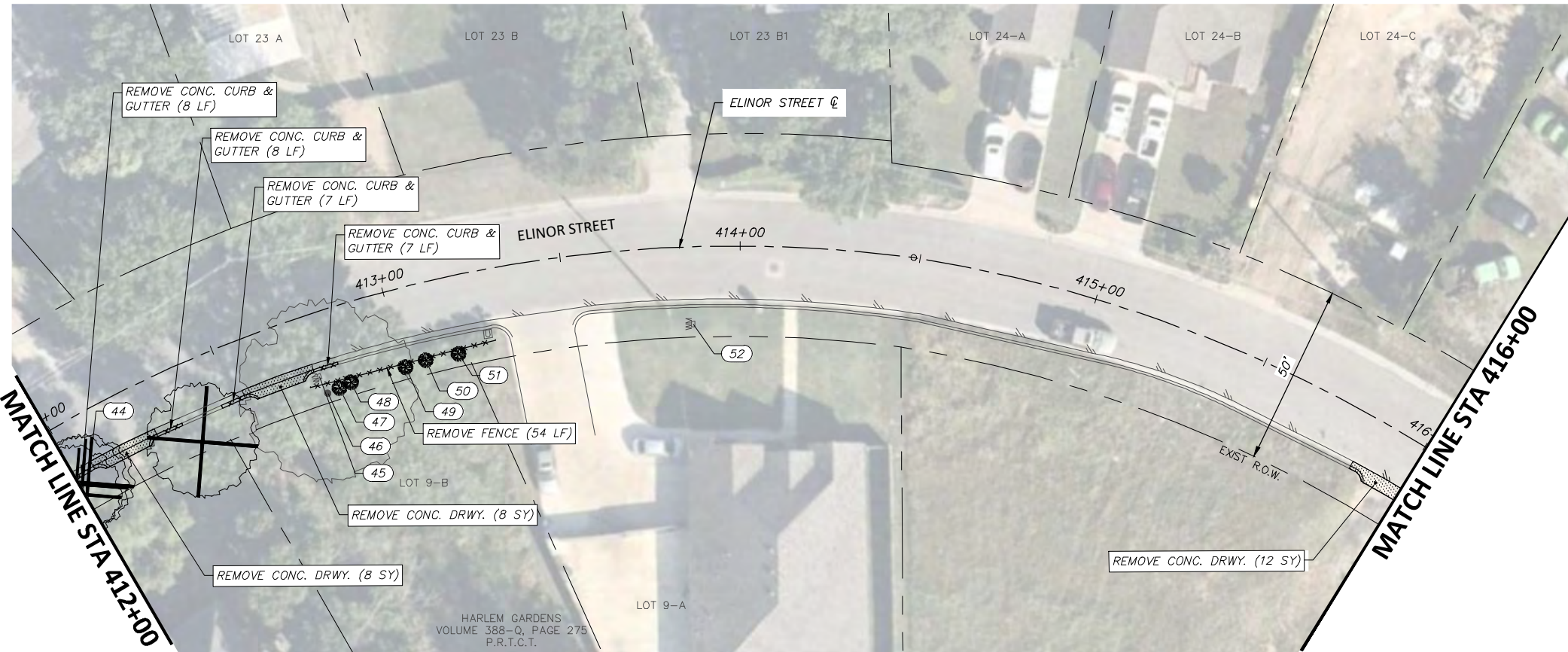
FED. RD. DIV. NO.	STATE	PROJECT NO.	HIGHWAY NO.		
6	TEXAS	STP 2021(929)TP	N/A		
STATE DISTRICT	COUNTY	CONTROL NO.	SECTION NO.	JOB NO.	SHEET NO.
FTW	TARRANT	0902	90	082	44

FULL PATH: G:\Production\500\002600\2684\002\Civil\Drawings\Plot Sheets\RMVL-PLAN BB\ELINOR ST

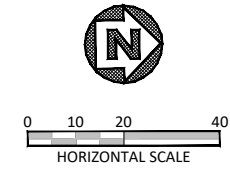
FILENAME: RMVL-PL-EL.dwg
 PLOTTED BY: LEE MONASTESSE
 PLOTTED WITH: _DWG TO PDF.PC3



ELINOR STREET



ELINOR STREET



NOTE:
 RETURN ALL REMOVED SIGNS TO TPW FIELD OPERATIONS SUPERVISOR SIDNEY RUTTER (SIDNEY.RUTTER@FORTWORTHTEXAS.GOV) AT 5001 JAMES AVE, FORT WORTH, TX.
 ITEMS NOT CALLED OUT FOR REMOVAL SHALL BE CLEARED & REMOVED AS REQUIRED AND DIRECTED BY THE ENGINEER. COST TO BE INCLUDED IN PRICE BID FOR SITE CLEARING. EXISTING SITE CONDITIONS MAY VARY FROM THOSE SHOWN ON THESE PLANS.
 CONTACT TARIK MCINTYRE (TPW FIELD OPERATIONS SUPERVISOR), 817-392-8101 FOR DROP OFF INFORMATION.

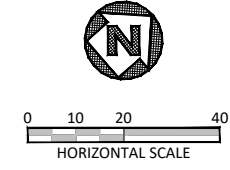
REMOVAL LEGEND

- TREES TO BE REMOVED
- REMOVAL ITEMS
- ABANDONEMENT ITEMS
- ASPHALT REMOVAL
- GRAVEL REMOVAL
- CONCRETE REMOVAL
- SIDEWALK/ RAMP REMOVAL
- CONCRETE DRIVE REMOVAL

EXISTING ELINOR ST. OBSTRUCTION CONFLICTS

NO.	STATION, OFFSET	DESCRIPTION	NOTE
24	408+13.11, 23.05 RT	SS CLEANOUT	PROTECT
25	408+15.05, 19.02 RT	OHE POLE	PROTECT (ADJUST TO GRADE)
26	408+46.30, 18.91 RT	WATER METER	PROTECT (ADJUST TO GRADE)
27	408+48.40, 22.69 RT	SS CLEANOUT	PROTECT (ADJUST TO GRADE)
28	408+74.78, 21.81 RT	SS CLEANOUT	PROTECT (ADJUST TO GRADE)
29	408+76.97, 21.94 RT	SS CLEANOUT	PROTECT (ADJUST TO GRADE)
30	409+09.89, 19.82 RT	WATER METER	PROTECT (ADJUST TO GRADE)
31	409+35.51, 17.93 RT	OHE POLE	PROTECT
32	410+16.66, 17.57 RT	WATER METER	PROTECT (ADJUST TO GRADE)
33	410+37.55, 18.47 RT	SS CLEANOUT	REPLACE W/ CAST IRON LID (SEE DETAILS)
34	410+50.64, 17.56 RT	WATER METER	PROTECT (ADJUST TO GRADE)
35	410+65.13, 20.34 RT	OHE POLE	PROTECT
36	410+72.88, 19.74 RT	TREE	REMOVE (3" CALIPER)
37	410+75.96, 20.56 RT	TREE	REMOVE (3" CALIPER)
38	411+14.77, 18.74 RT	WATER METER	PROTECT (ADJUST TO GRADE)
39	411+19.38, 21.68 RT	TREE	REMOVE (6" CALIPER)
40	411+23.44, 21.23 RT	TREE	REMOVE (8" CALIPER)
41	411+78.19, 18.08 RT	WATER METER	PROTECT (ADJUST TO GRADE)
42	411+97.15, 18.82 RT	TREE	REMOVE (4" CALIPER)
43	412+00.21, 17.56 RT	TREE	REMOVE (5" CALIPER)
44	412+01.94, 17.96 RT	TREE	REMOVE (8" CALIPER)
45	412+75.93, 17.26 RT	WATER METER	PROTECT (ADJUST TO GRADE)
46	412+76.71, 22.48 RT	TREE	PROTECT

* SEE NEXT SHEET FOR CONFLICTS 47 THRU 52.



DATE	BY	REV	REVISION

DUNAWAY 550 Bailey Avenue
 Suite 400
 Fort Worth, TX 76107
 817-335-1121

FORT WORTH

PROJ NO. 101264 FILE NO. K-2630

Texas Department of Transportation
 © 2021

2018 SAFE ROUTES TO SCHOOL IMPROVEMENTS

ELINOR STREET
REMOVALS AND UTILITY ADJUSTMENTS
STA. 408+00.00 TO STA. 416+00.00
BONNIE BRAE ELEMENTARY SCHOOL

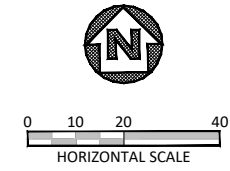
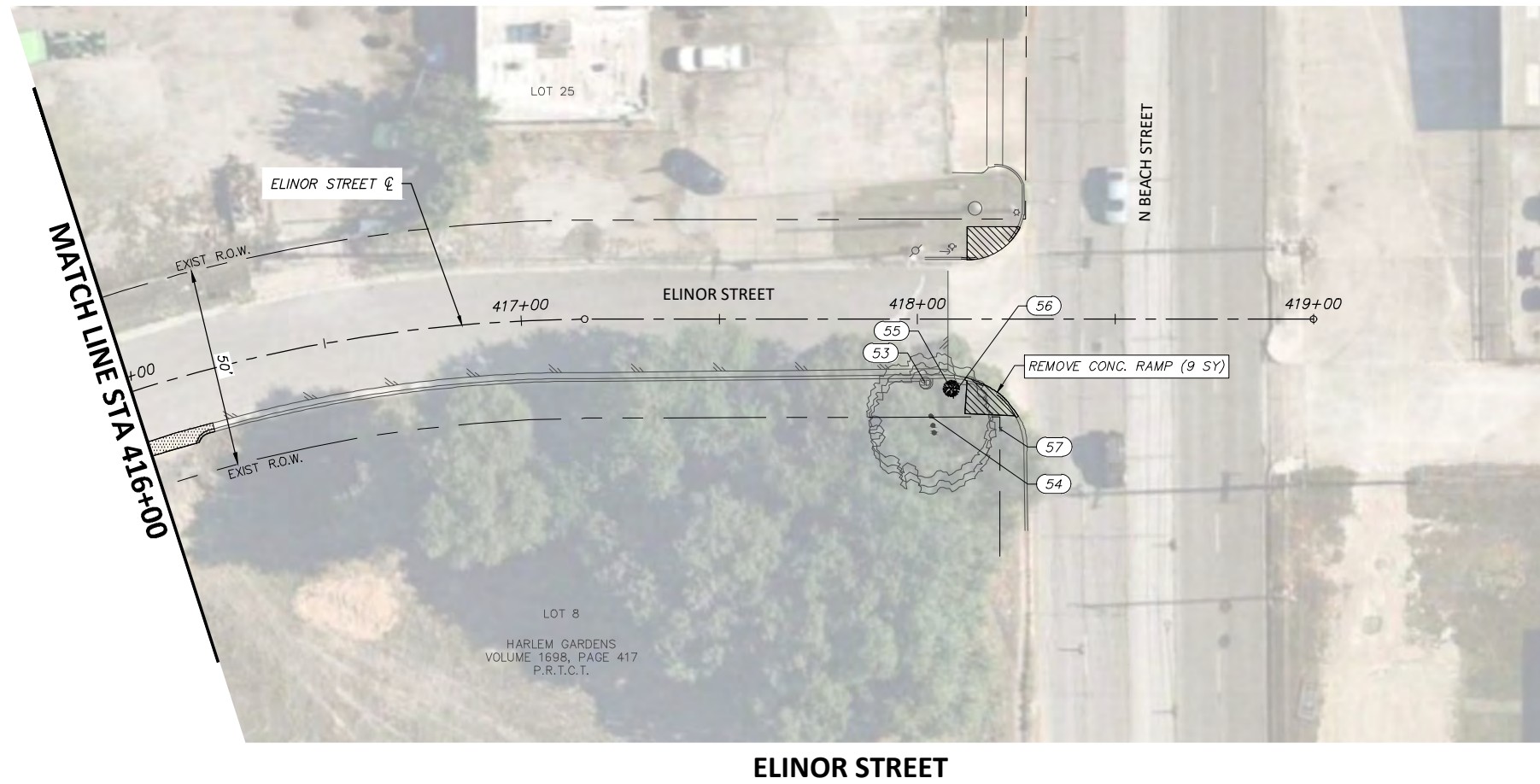
FED. RD. DIV. NO.	STATE	PROJECT NO.	HIGHWAY NO.		
6	TEXAS	STP 2021(929)TP	N/A		
STATE DISTRICT	COUNTY	CONTROL NO.	SECTION NO.	JOB NO.	SHEET NO.
FTW	TARRANT	0902	90	082	45

6/14/2021

Joshua Wright

FULL PATH: G:\Production\500\002600\2684\002\Civil\Drawings\Plot Sheets\RMVL-PLAN BB\ELINOR ST

FILENAME: RMVL-PL-EL.dwg
 PLOTTED BY: LEE MONASTESSE
 PLOTTED WITH: _DWG TO PDF.PC3



NOTE:
 RETURN ALL REMOVED SIGNS TO TPW FIELD OPERATIONS SUPERVISOR SIDNEY RUTTER (SIDNEY.RUTTER@FORTWORTHTEXAS.GOV) AT 5001 JAMES AVE, FORT WORTH, TX.
 ITEMS NOT CALLED OUT FOR REMOVAL SHALL BE CLEARED & REMOVED AS REQUIRED AND DIRECTED BY THE ENGINEER. COST TO BE INCLUDED IN PRICE BID FOR SITE CLEARING. EXISTING SITE CONDITIONS MAY VARY FROM THOSE SHOWN ON THESE PLANS.
 CONTACT TARIK MCINTYRE (TPW FIELD OPERATIONS SUPERVISOR), 817-392-8101 FOR DROP OFF INFORMATION.

REMOVAL LEGEND	
	TREES TO BE REMOVED
	REMOVAL ITEMS
	ABANDONMENT ITEMS
	ASPHALT REMOVAL
	GRAVEL REMOVAL
	CONCRETE REMOVAL
	SIDEWALK/ RAMP REMOVAL
	CONCRETE DRIVE REMOVAL

EXISTING ELINOR ST. OBSTRUCTION CONFLICTS			
NO.	℄ STATION, OFFSET	DESCRIPTION	NOTE
47	412+80.39, 22.02 RT	SHRUB	REMOVE
48	412+84.20, 21.46 RT	SHRUB	REMOVE
49	413+00.76, 21.63 RT	SHRUB	REMOVE
50	413+07.01, 21.14 RT	SHRUB	REMOVE
51	413+16.79, 21.51 RT	SHRUB	REMOVE
52	413+86.33, 21.38 RT	WATER METER	PROTECT (ADJUST TO GRADE)
53	418+02.07, 16.06 RT	STORM DRAIN	PROTECT
54	418+03.46, 24.56 RT	TREE	PROTECT
55	418+08.54, 17.57 RT	SHRUB	REMOVE
56	418+09.46, 18.55 RT	STOP SIGN	REMOVE & RESET
57	418+21.04, 27.77 RT	WATER VALVE	PROTECT

DATE	BY	REV	REVISION

DUNAWAY (TX REG #1114) 550 Bailey Avenue
 Suite 400
 Fort Worth, TX 76107
 817-335-1121

FORT WORTH
 PROJ NO. 101264 FILE NO. K-2630

Texas Department of Transportation
 © 2021

2018 SAFE ROUTES TO SCHOOL IMPROVEMENTS

ELINOR STREET
REMOVALS AND UTILITY ADJUSTMENTS
STA. 416+00.00 TO STA. 419+00.00
BONNIE BRAE ELEMENTARY SCHOOL

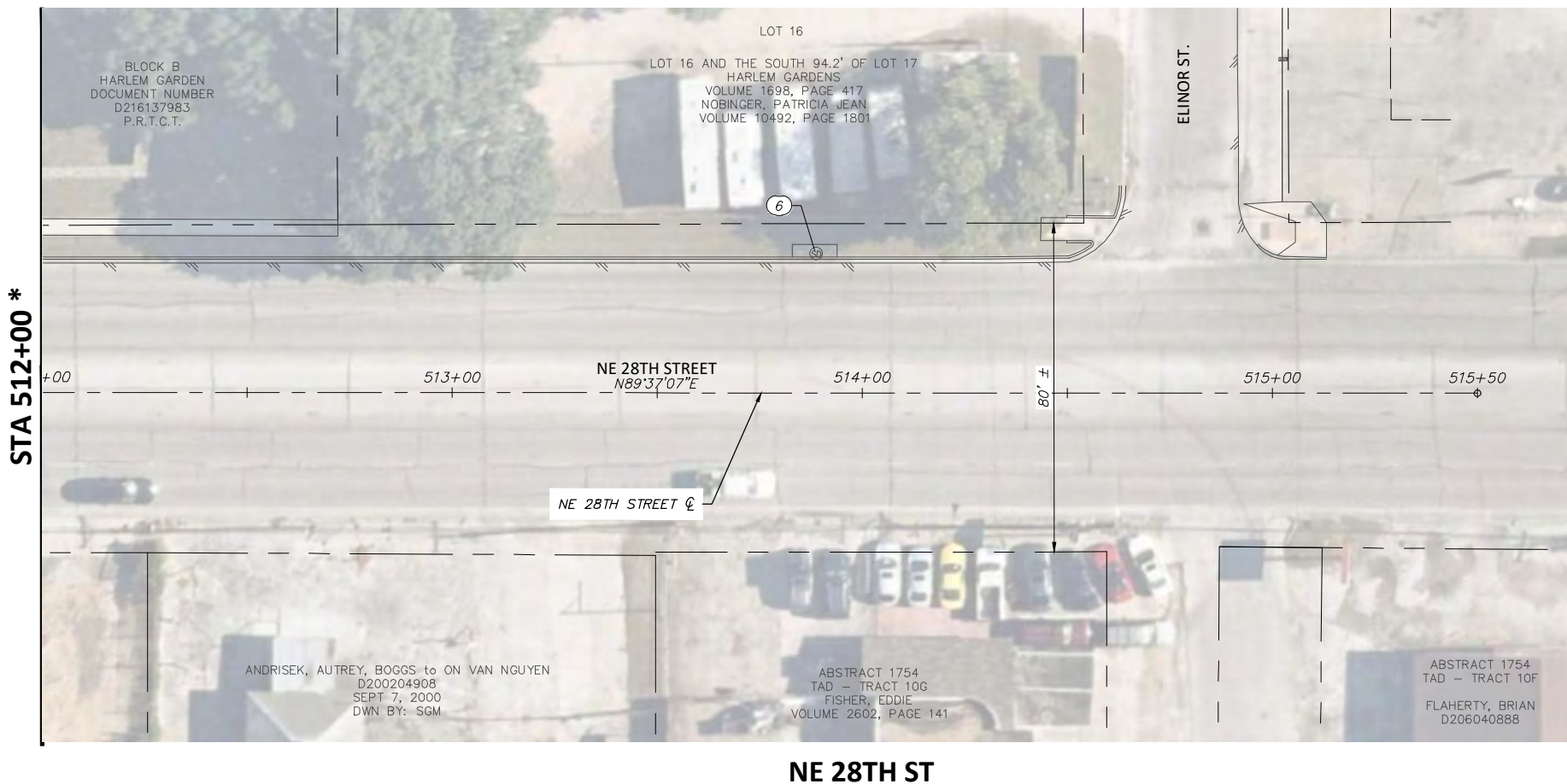
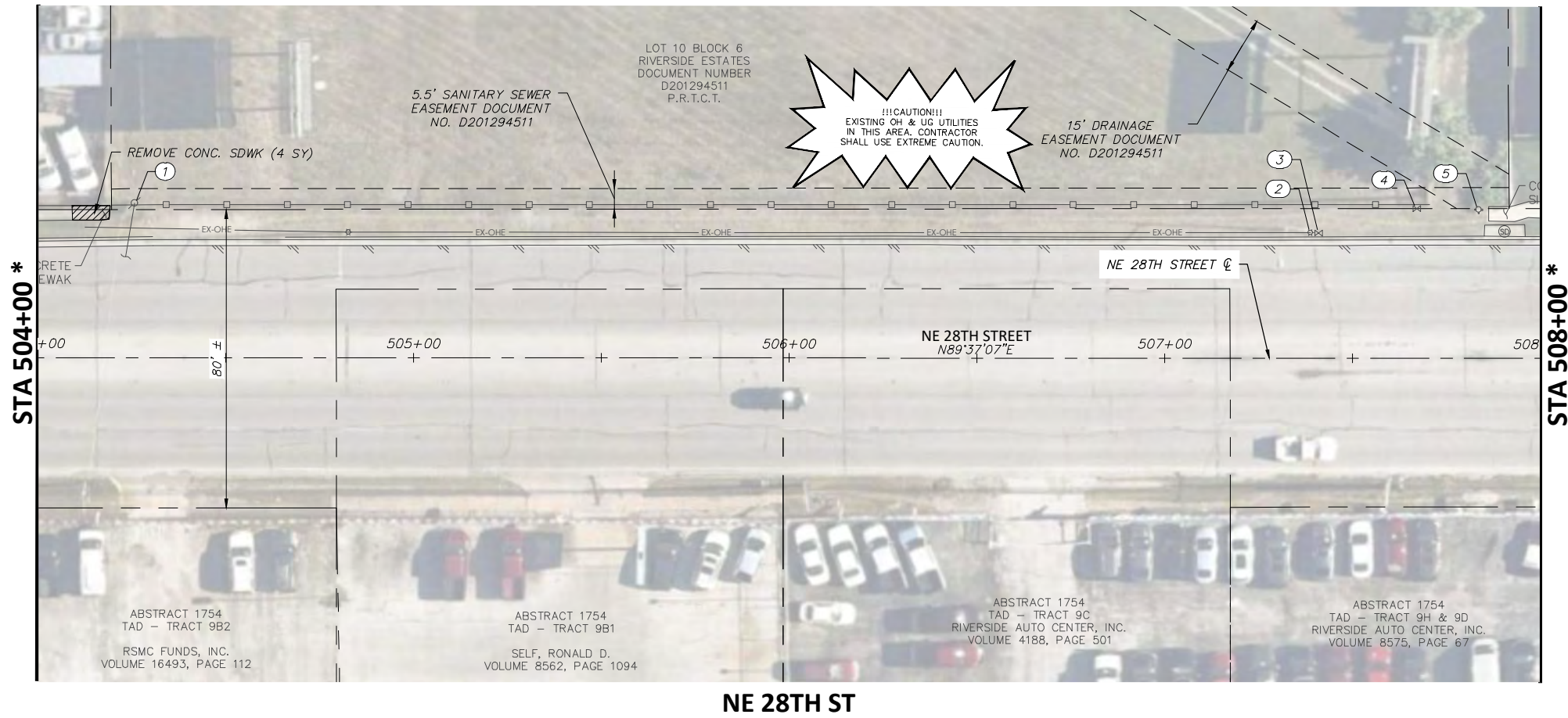
FED.RD. DIV. NO.	STATE	PROJECT NO.		HIGHWAY NO.	
6	TEXAS	STP 2021(929)TP		N/A	
STATE DISTRICT	COUNTY	CONTROL NO.	SECTION NO.	JOB NO.	SHEET NO.
FTW	TARRANT	0902	90	082	46

6/14/2021

 Joshua Wright

FULL PATH: G:\Production\500\002600\2684\002\Civil\Drawings\Plot Sheets\RMVL-PLAN BB\28TH ST

FILENAME: RMVL-PL-28.dwg
 PLOTTED BY: LEE MONASTESSE
 PLOTTED WITH: _DWG TO PDF.PC3



NOTE:
 RETURN ALL REMOVED SIGNS TO TPW FIELD OPERATIONS SUPERVISOR SIDNEY RUTTER (SIDNEY.RUTTER@FORTWORTHTEXAS.GOV) AT 5001 JAMES AVE, FORT WORTH, TX.
 ITEMS NOT CALLED OUT FOR REMOVAL SHALL BE CLEARED & REMOVED AS REQUIRED AND DIRECTED BY THE ENGINEER. COST TO BE INCLUDED IN PRICE BID FOR SITE CLEARING. EXISTING SITE CONDITIONS MAY VARY FROM THOSE SHOWN ON THESE PLANS.
 CONTACT TARIK MCINTYRE (TPW FIELD OPERATIONS SUPERVISOR), 817-392-8101 FOR DROP OFF INFORMATION.

REMOVAL LEGEND	
	TREES TO BE REMOVED
	REMOVAL ITEMS
	ABANDONMENT ITEMS
	ASPHALT REMOVAL
	GRAVEL REMOVAL
	CONCRETE REMOVAL
	SIDEWALK/ RAMP REMOVAL
	CONCRETE DRIVE REMOVAL

EXISTING 28TH ST. OBSTRUCTION CONFLICTS			
NO.	STATION, OFFSET	DESCRIPTION	NOTE
1	504+25.59, 41.13 LT	OHE POLE	PROTECT
2	507+38.68, 33.45 LT	OHE POLE	PROTECT
3	507+40.92, 33.34 LT	WATER VALVE	PROTECT
4	507+67.03, 39.85 LT	WATER VALVE	PROTECT (ADJUST TO GRADE)
5	507+83.51, 39.55 LT	FIRE HYDRANT	PROTECT
6	513+88.76, 33.87 LT	STORM DRAIN	PROTECT

* NO REMOVALS OCCUR BETWEEN STA 0+00 TO STA 4+00, STA 8+00 TO STA 12+00.



DATE	BY	REV	REVISION

DUNAWAY 550 Bailey Avenue
 Suite 400
 Fort Worth, TX 76107
 (TX REG #1114) 817-335-1121

FORT WORTH

PROJ NO. 101264 FILE NO. K-2630

Texas Department of Transportation
 © 2021

2018 SAFE ROUTES TO SCHOOL IMPROVEMENTS

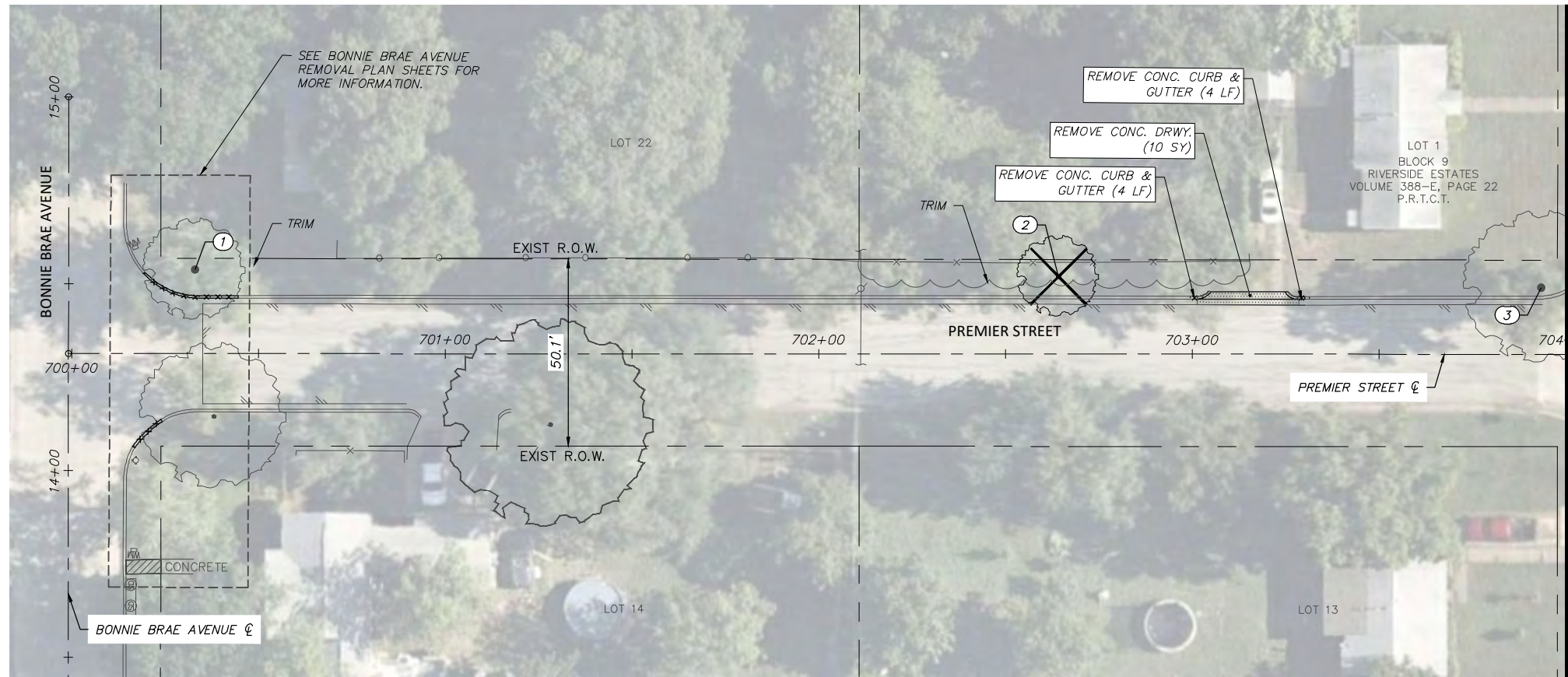
NE 28TH ST
REMOVALS AND UTILITY ADJUSTMENTS
STA. 500+00.00 TO STA. 515+50.00
BONNIE BRAE ELEMENTARY SCHOOL

FED. RD. DIV. NO.	STATE	PROJECT NO.	HIGHWAY NO.
6	TEXAS	STP 2021(929)TP	N/A

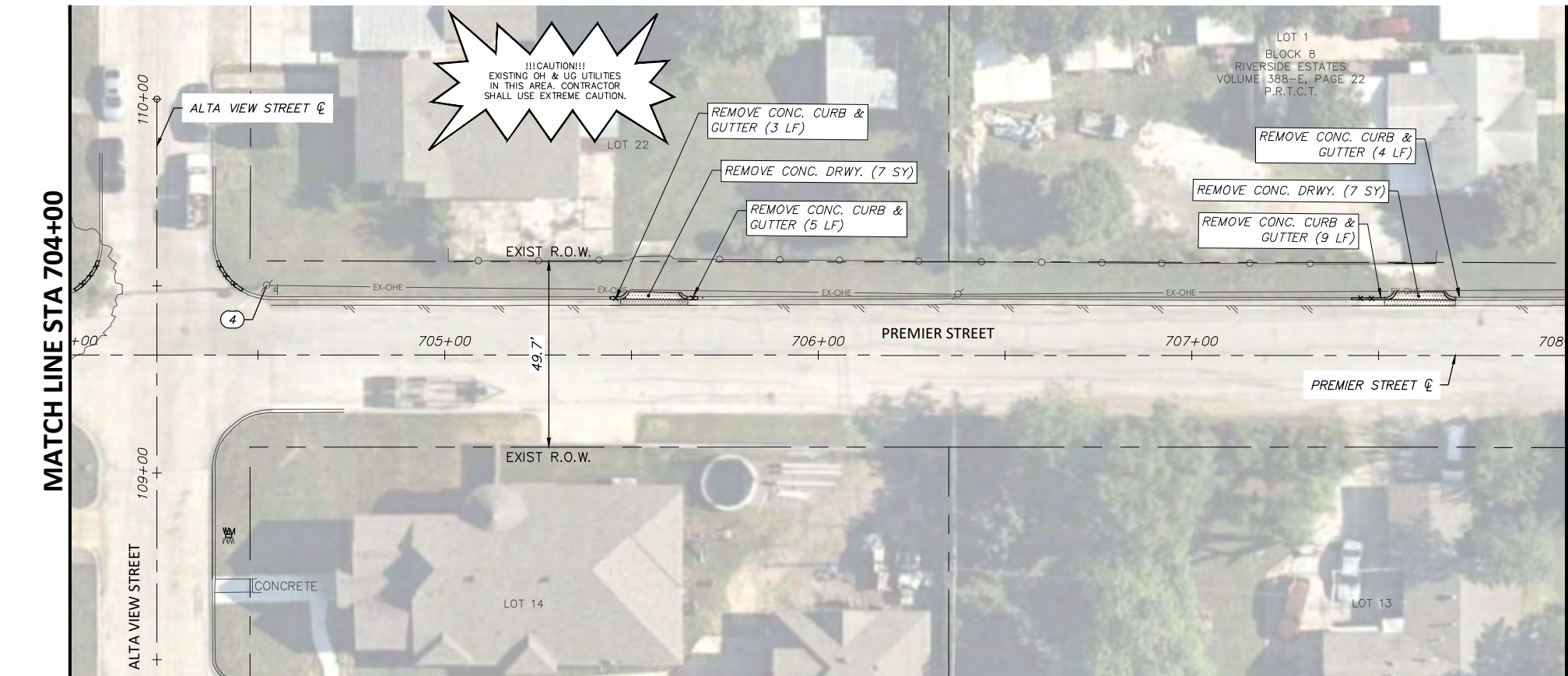
STATE DISTRICT	COUNTY	CONTROL NO.	SECTION NO.	JOB NO.	SHEET NO.
FTW	TARRANT	0902	90	082	47

FULL PATH: G:\Production\500\002600\2684\002\Civil\Drawings\Plot Sheets\RMVL-PLAN-BB\PREMIER-ST

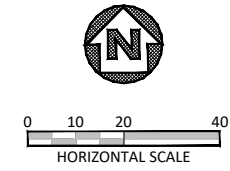
FILENAME: RMVL-PP-FM.dwg
 PLOTTED BY: LEE MONASTESSE
 PLOTTED WITH: _DWG TO PDF.PC3



PREMIER STREET



PREMIER STREET



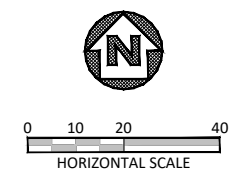
NOTE:
 RETURN ALL REMOVED SIGNS TO TPW FIELD OPERATIONS SUPERVISOR SIDNEY RUTTER (SIDNEY.RUTTER@FORTWORTHTEXAS.GOV) AT 5001 JAMES AVE, FORT WORTH, TX.
 ITEMS NOT CALLED OUT FOR REMOVAL SHALL BE CLEARED & REMOVED AS REQUIRED AND DIRECTED BY THE ENGINEER. COST TO BE INCLUDED IN PRICE BID FOR SITE CLEARING. EXISTING SITE CONDITIONS MAY VARY FROM THOSE SHOWN ON THESE PLANS.
 CONTACT TARIK MCINTYRE (TPW FIELD OPERATIONS SUPERVISOR), 817-392-8101 FOR DROP OFF INFORMATION.

REMOVAL LEGEND

- TREES TO BE REMOVED
- REMOVAL ITEMS
- ABANDONEMENT ITEMS
- ASPHALT REMOVAL
- GRAVEL REMOVAL
- CONCRETE REMOVAL
- SIDEWALK/ RAMP REMOVAL
- CONCRETE DRIVE REMOVAL

EXISTING UTIL-EX OBSTRUCTION CONFLICTS

NO.	℄ STATION, OFFSET	DESCRIPTION	NOTE
1	700+33.06, 22.43 LT	TREE	PROTECT
2	702+64.26, 20.73 LT	TREE	REMOVE 10" CALIPER)
3	703+93.52, 17.77 LT	TREE	PROTECT
4	704+52.32, 18.64 LT	OHE POLE	PROTECT



6/14/2021

 Joshua Wright

DATE	BY	REV	REVISION

DUNAWAY 550 Bailey Avenue
 Suite 400
 Fort Worth, TX 76107
 (TX REG-F-1114) 817-335-1121

FORT WORTH

PROJ NO. 101264 FILE NO. K-2630

Texas Department of Transportation
 © 2021

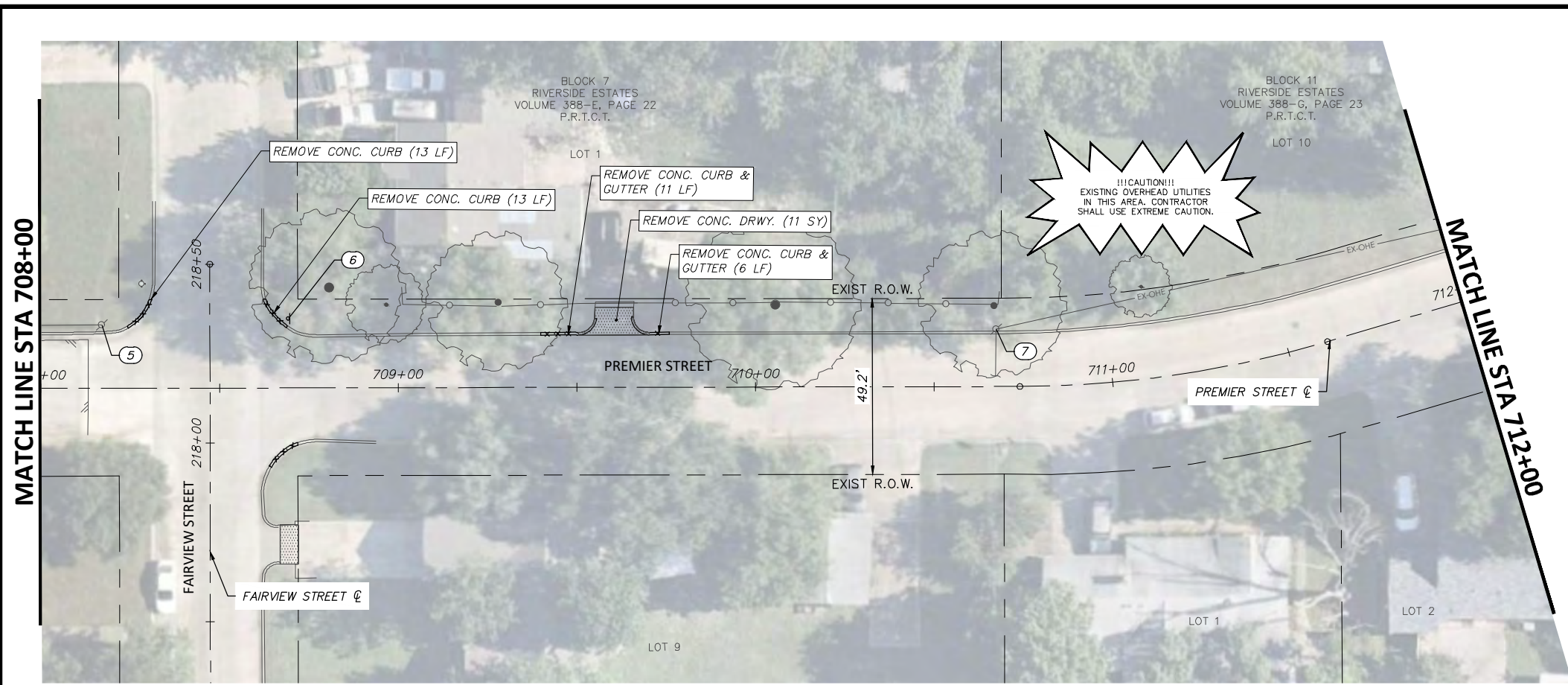
2018 SAFE ROUTES TO SCHOOL IMPROVEMENTS

**PREMIER STREET
 REMOVALS AND UTILITY ADJUSTMENTS
 STA. 700+00.00 TO STA. 708+00.00
 BONNIE BRAE ELEMENTARY SCHOOL**

FED. RD. DIV. NO.	STATE	PROJECT NO.	HIGHWAY NO.		
6	TEXAS	STP 2021(929)TP	N/A		
STATE DISTRICT	COUNTY	CONTROL NO.	SECTION NO.	JOB NO.	SHEET NO.
FTW	TARRANT	0902	90	082	48

FULL PATH: G:\Production\500\002600\2684\002\Civil\Drawings\Plot Sheets\RMVL-PLAN-BB\PREMIER-ST

FILENAME: RMVL-PP-FM.dwg
 PLOTTED BY: LEE MONASTESSE
 PLOTTED WITH: _DWG TO PDF.PC3



PREMIER STREET

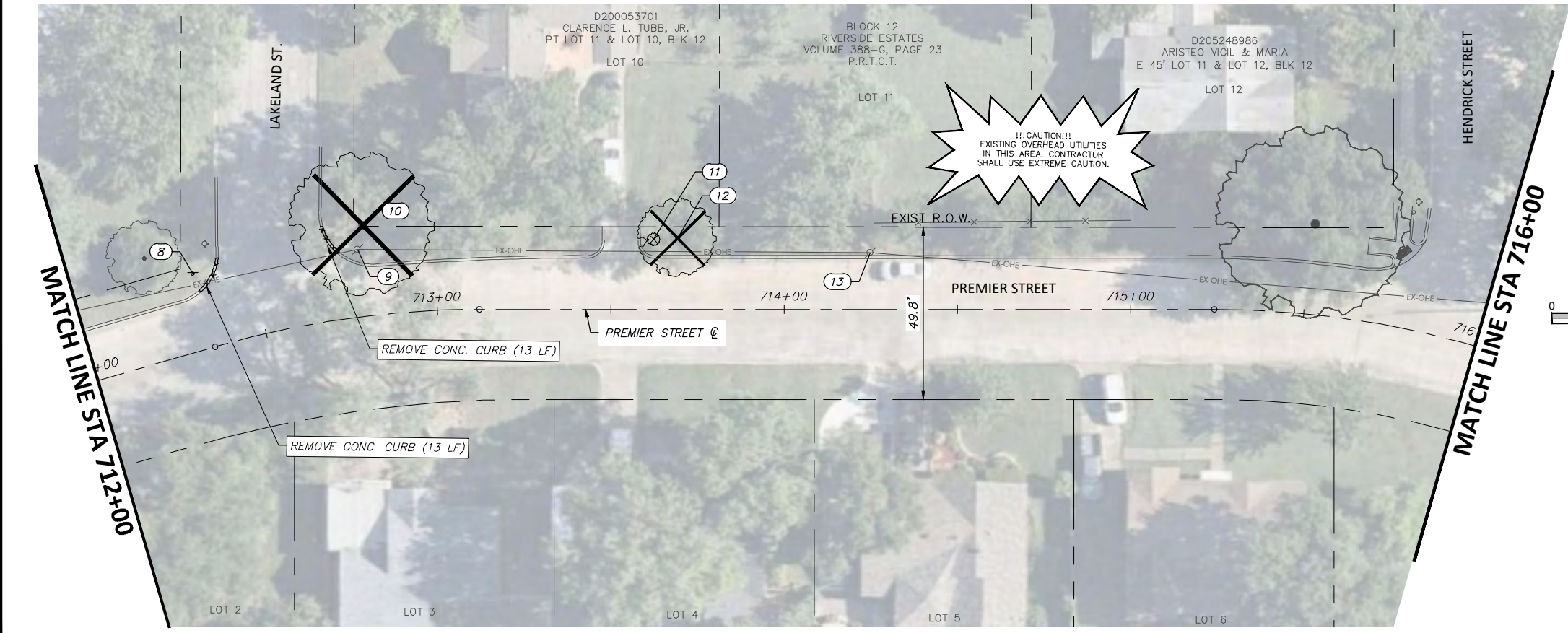
NOTE:
 RETURN ALL REMOVED SIGNS TO TPW FIELD OPERATIONS SUPERVISOR SIDNEY RUTTER (SIDNEY.RUTTER@FORTWORTH.TEXAS.GOV) AT 5001 JAMES AVE, FORT WORTH, TX.
 ITEMS NOT CALLED OUT FOR REMOVAL SHALL BE CLEARED & REMOVED AS REQUIRED AND DIRECTED BY THE ENGINEER. COST TO BE INCLUDED IN PRICE BID FOR SITE CLEARING. EXISTING SITE CONDITIONS MAY VARY FROM THOSE SHOWN ON THESE PLANS.
 CONTACT TARIK MCINTYRE (TPW FIELD OPERATIONS SUPERVISOR), 817-392-8101 FOR DROP OFF INFORMATION.

REMOVAL LEGEND

- TREES TO BE REMOVED
- REMOVAL ITEMS
- ABANDONMENT ITEMS
- ASPHALT REMOVAL
- GRAVEL REMOVAL
- CONCRETE REMOVAL
- SIDEWALK/ RAMP REMOVAL
- CONCRETE DRIVE REMOVAL

EXISTING UTIL-EX OBSTRUCTION CONFLICTS

NO.	STATION, OFFSET	DESCRIPTION	NOTE
5	708+17.03, 17.73 LT	OHE POLE	PROTECT
6	708+69.23, 19.41 LT	STOP SIGN	REMOVE & RESET
7	710+67.36, 16.06 LT	OHE POLE	PROTECT
8	712+34.49, 21.99 LT	STREET SIGN	REMOVE & RESET
9	712+79.12, 19.35 LT	OHE POLE	PROTECT
10	712+81.34, 26.08 LT	TREE	REMOVE (22" CALIPER)
11	713+62.40, 20.25 LT	SHRUB	REMOVE
12	713+69.29, 20.49 LT	TREE	REMOVE (CLUSTER)
13	714+24.86, 16.31 LT	OHE POLE	PROTECT



PREMIER STREET

DUNAWAY 550 Bailey Avenue
 Suite 400
 Fort Worth, TX 76107
 817-335-1121

FORT WORTH

PROJ NO. 101264 FILE NO. K-2630

Texas Department of Transportation
 © 2021

2018 SAFE ROUTES TO SCHOOL IMPROVEMENTS

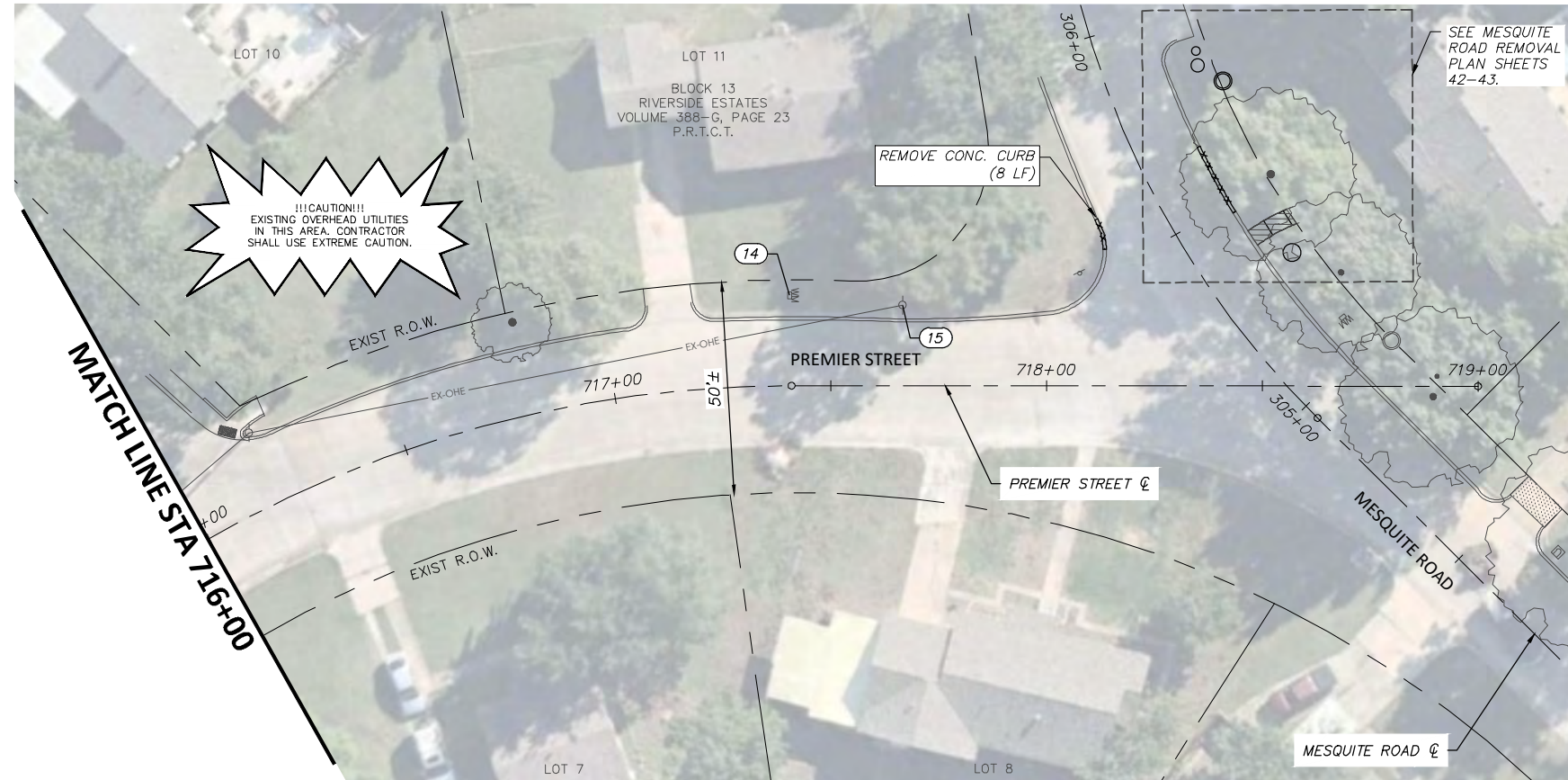
**PREMIER STREET
 REMOVALS AND UTILITY ADJUSTMENTS
 STA. 708+00.00 TO STA. 716+00.00
 BONNIE BRAE ELEMENTARY SCHOOL**

6/14/2021

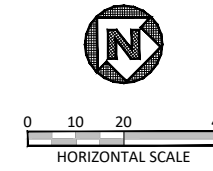
FED. RD. DIV. NO.	STATE	PROJECT NO.	HIGHWAY NO.		
6	TEXAS	STP 2021(929)TP	N/A		
STATE DISTRICT	COUNTY	CONTROL NO.	SECTION NO.	JOB NO.	SHEET NO.
FTW	TARRANT	0902	90	082	49

FULL PATH: G:\Production\500\002600\2684\002\Civil\Drawings\Plot Sheets\RMVL-PLAN-BB\PREMIER-ST

FILENAME: RMVL-PP-FM.dwg
 PLOTTED BY: LEE MONASTESSE
 PLOTTED WITH: _DWG TO PDF.PC3



PREMIER STREET



NOTE:
 RETURN ALL REMOVED SIGNS TO TPW FIELD OPERATIONS SUPERVISOR SIDNEY RUTTER (SIDNEY.RUTTER@FORTWORTHTEXAS.GOV) AT 5001 JAMES AVE, FORT WORTH, TX.
 ITEMS NOT CALLED OUT FOR REMOVAL SHALL BE CLEARED & REMOVED AS REQUIRED AND DIRECTED BY THE ENGINEER. COST TO BE INCLUDED IN PRICE BID FOR SITE CLEARING. EXISTING SITE CONDITIONS MAY VARY FROM THOSE SHOWN ON THESE PLANS.
 CONTACT TARIK MCINTYRE (TPW FIELD OPERATIONS SUPERVISOR), 817-392-8101 FOR DROP OFF INFORMATION.

REMOVAL LEGEND	
	TREES TO BE REMOVED
	REMOVAL ITEMS
	ABANDONMENT ITEMS
	ASPHALT REMOVAL
	GRAVEL REMOVAL
	CONCRETE REMOVAL
	SIDEWALK/ RAMP REMOVAL
	CONCRETE DRIVE REMOVAL

EXISTING UTIL-EX OBSTRUCTION CONFLICTS			
NO.	Q STATION, OFFSET	DESCRIPTION	NOTE
14	717+40.55, 20.89 LT	WATER METER	PROTECT (ADJUST TO GRADE)
15	717+66.70, 18.67 LT	OHE POLE	PROTECT

DATE	BY	REV	REVISION

DUNAWAY (TX REG #1114) 550 Bailey Avenue
 Suite 400
 Fort Worth, TX 76107
 817-335-1121

FORT WORTH
 PROJ NO. 101264 FILE NO. K-2630

Texas Department of Transportation
 © 2021

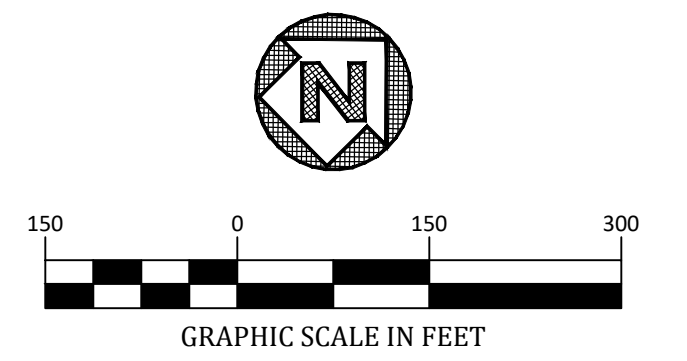
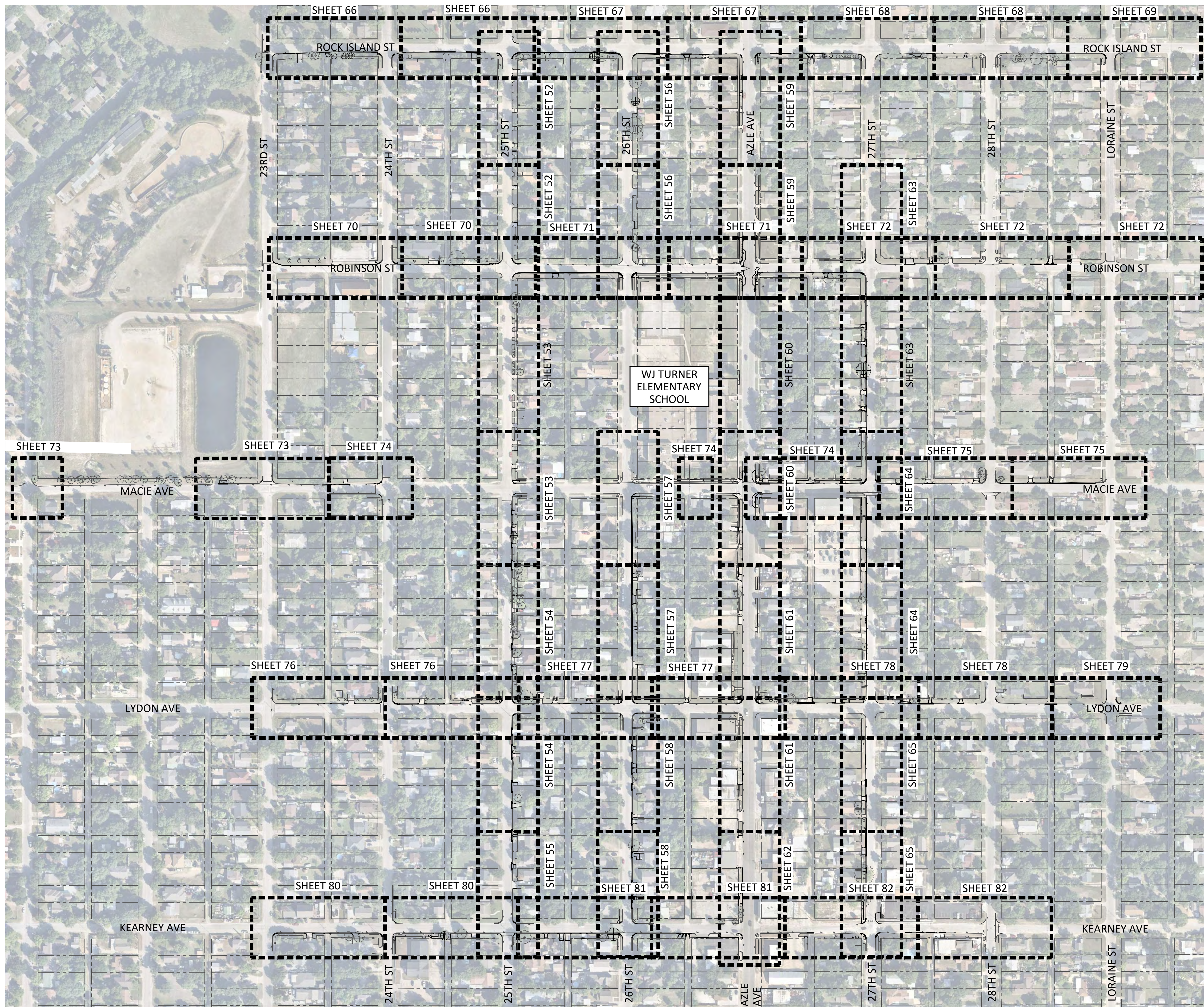
2018 SAFE ROUTES TO SCHOOL IMPROVEMENTS

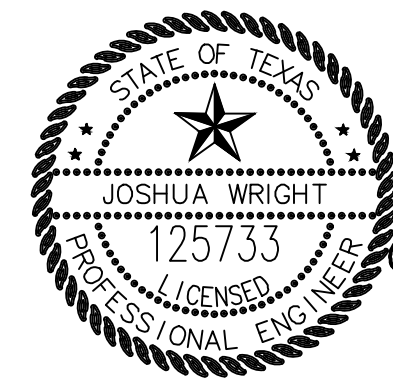
**PREMIER STREET
 REMOVALS AND UTILITY ADJUSTMENTS
 STA. 716+00.00 TO STA. 719+00.00
 BONNIE BRAE ELEMENTARY SCHOOL**

FED.RD. DIV. NO.	STATE	PROJECT NO.	HIGHWAY NO.		
6	TEXAS	STP 2021(929)TP	N/A		
STATE DISTRICT	COUNTY	CONTROL NO.	SECTION NO.	JOB NO.	SHEET NO.
FTW	TARRANT	0902	90	082	50

6/14/2021

 Joshua Wright




 PROJECT ENGINEER
 DATE 6/11/2021

DATE	BY	REV	REVISION


 550 Bailey Avenue
 Suite 400
 Fort Worth, TX 76107
 817-335-1121


 PROJ NO. 101264 FILE NO. K-2630


 Texas Department of Transportation
 © 2020

2018 SAFE ROUTES TO SCHOOL IMPROVEMENTS

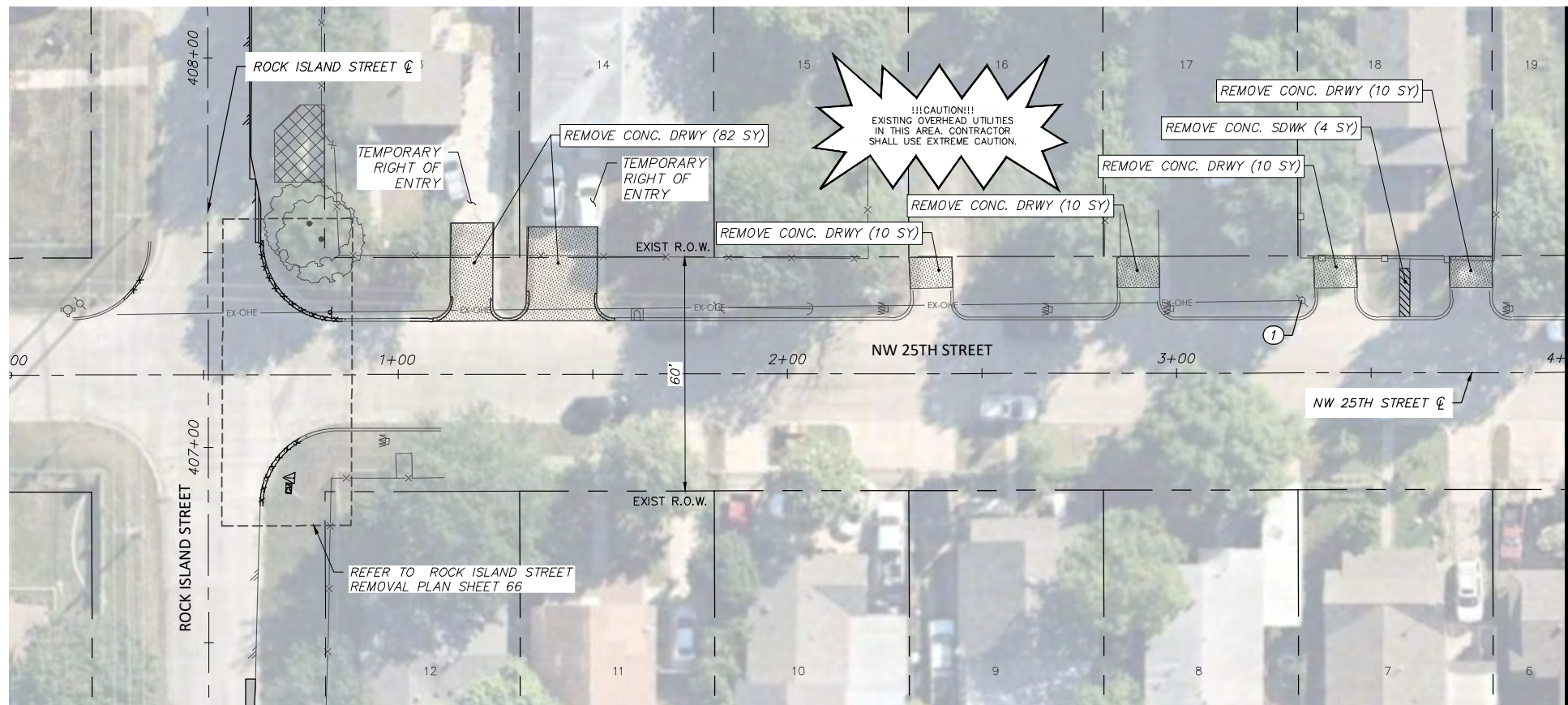
PROJECT REMOVAL KEY MAP

W.J. TURNER ELEMENTARY SCHOOL

FED. RD. DIV. NO.	STATE	PROJECT NO.	HIGHWAY NO.		
6	TEXAS	STP 2021(929)TP	VA		
STATE DISTRICT	COUNTY	CONTROL NO.	SECTION NO.	JOB NO.	SHEET NO.
FTW	TARRANT	0902	90	082	51

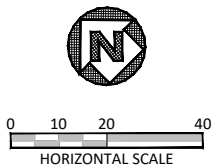
FULL PATH: G:\Production\500\002600\2684\002\Civil\Drawings\Plot Sheets\RMVL-PLAN-WJT\25TH ST

FILENAME: RMVL-PL-25.dwg
 PLOTTED BY: LEE MONASTESSE
 PLOTTED WITH: _DWG TO PDF.PC3



NW 25TH STREET

MATCH LINE STA 4+00



NOTE:

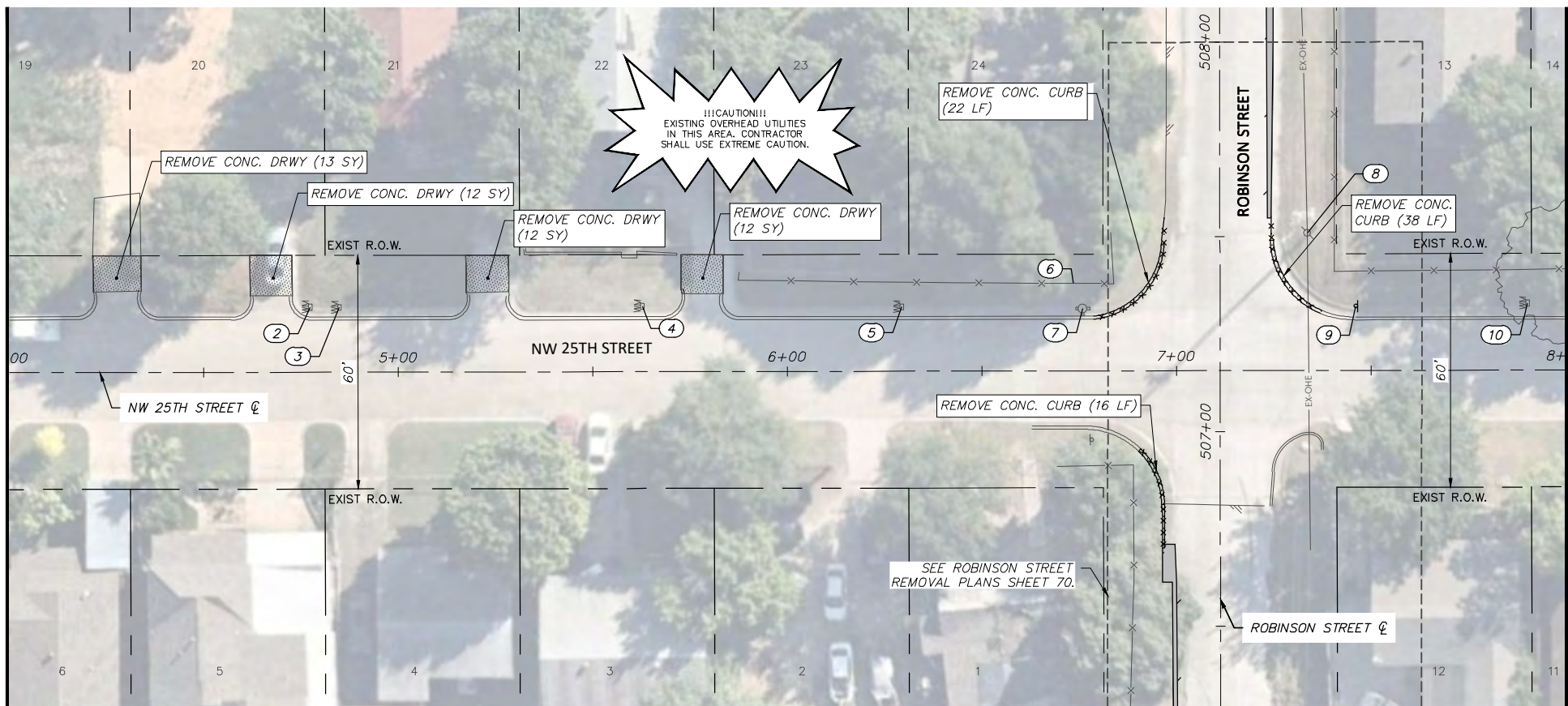
RETURN ALL REMOVED SIGNS TO TPW FIELD OPERATIONS SUPERVISOR SIDNEY RUTTER (SIDNEY.RUTTER@FORTWORTHTEXAS.GOV) AT 5001 JAMES AVE, FORT WORTH, TX.

ITEMS NOT CALLED OUT FOR REMOVAL SHALL BE CLEARED & REMOVED AS REQUIRED AND DIRECTED BY THE ENGINEER. COST TO BE INCLUDED IN PRICE BID FOR SITE CLEARING. EXISTING SITE CONDITIONS MAY VARY FROM THOSE SHOWN ON THESE PLANS.

REMOVAL LEGEND

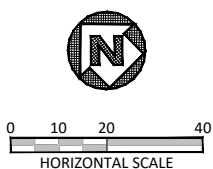
- TREES TO BE REMOVED
- REMOVAL ITEMS
- ABANDONMENT ITEMS
- ASPHALT REMOVAL
- GRAVEL REMOVAL
- CONCRETE REMOVAL
- SIDEWALK/ RAMP REMOVAL
- CONCRETE DRIVE REMOVAL

EXISTING NW-25TH-ST OBSTRUCTION CONFLICTS			
NO.	☉ STATION, OFFSET	DESCRIPTION	NOTE
1	3+32.31, 18.50 LT	OHE POLE	PROTECT
2	4+77.48, 16.69 LT	WATER METER	PROTECT (ADJUST TO GRADE)
3	4+85.01, 16.61 LT	WATER METER	PROTECT (ADJUST TO GRADE)
4	5+62.84, 16.77 LT	WATER METER	PROTECT (ADJUST TO GRADE)
5	6+29.47, 16.56 LT	WATER METER	PROTECT (ADJUST TO GRADE)
6	6+73.61, 22.48 LT	FENCE	PROTECT
7	6+75.99, 16.02 LT	FIRE HYDRANT	PROTECT (ADJUST TO GRADE)
8	7+33.77, 35.35 LT	OHE POLE	PROTECT
9	7+46.17, 16.53 LT	STOP SIGN	REMOVE & RESET
10	7+90.29, 17.21 LT	WATER METER	PROTECT (ADJUST TO GRADE)

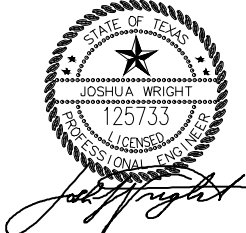


NW 25TH STREET

MATCH LINE STA 8+00



6/14/2021



DATE	BY	REV	REVISION

DUNAWAY 550 Bailey Avenue
 Suite 400
 Fort Worth, TX 76107
 (TX REG. F-1114) 817-335-1121

FORT WORTH

PROJ NO. 101264 FILE NO. K-2630

Texas Department of Transportation
 © 2020

2018 SAFE ROUTES TO SCHOOL IMPROVEMENTS

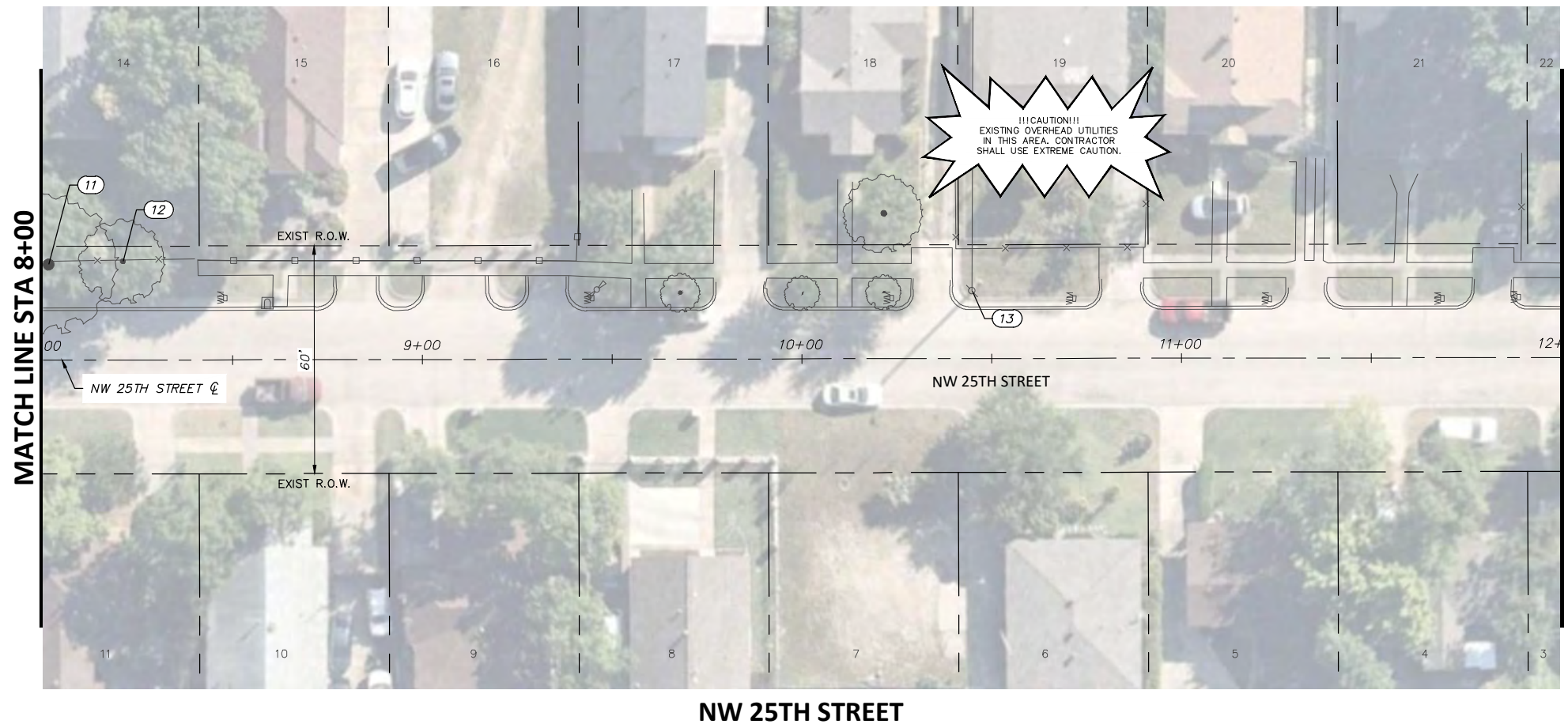
**NW 25TH STREET
 REMOVALS AND UTILITY ADJUSTMENTS
 STA. 0+00.00 TO STA. 8+00.00
 WJ TURNER ELEMENTARY SCHOOL**

FED. RD. DIV. NO.	STATE	PROJECT NO.	HIGHWAY NO.
6	TEXAS	STP 2021(929)TP	N/A

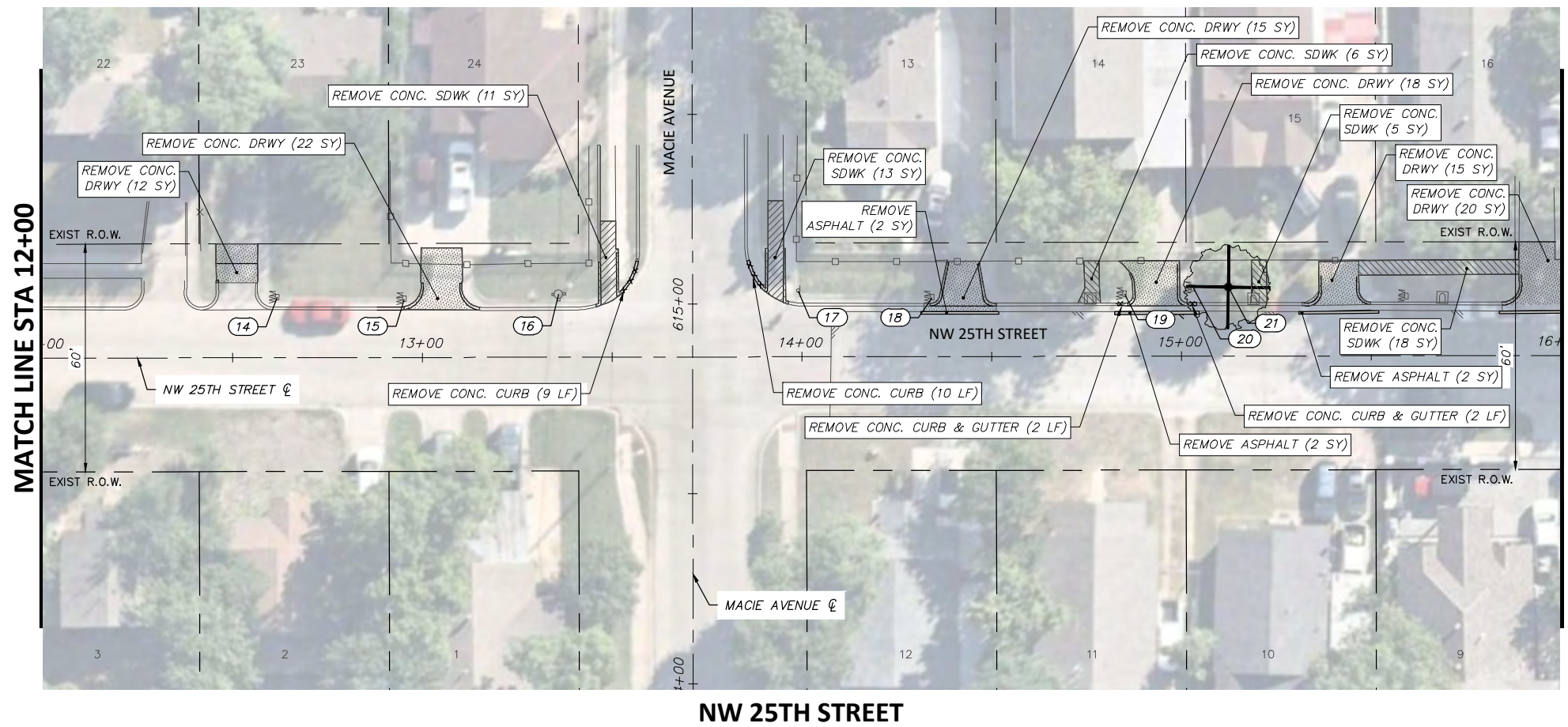
STATE DISTRICT	COUNTY	CONTROL NO.	SECTION NO.	JOB NO.	SHEET NO.
FTW	TARRANT	0902	90	082	52

FULL PATH: G:\Production\500\002600\2684\002\Civil\Drawings\Plot Sheets\RMVL-PLAN-WJT\25TH ST

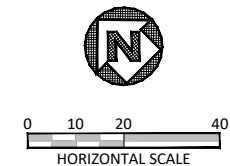
FILENAME: RMVL-PL-25.dwg
 PLOTTED BY: LEE MONASTESSE
 PLOTTED WITH: _DWG TO PDF.PC3



NW 25TH STREET



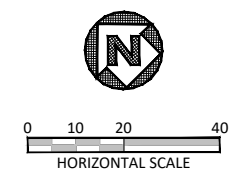
NW 25TH STREET



NOTE:
 RETURN ALL REMOVED SIGNS TO TPW FIELD OPERATIONS SUPERVISOR SIDNEY RUTTER (SIDNEY.RUTTER@FORTWORTHTEXAS.GOV) AT 5001 JAMES AVE, FORT WORTH, TX.
 ITEMS NOT CALLED OUT FOR REMOVAL SHALL BE CLEARED & REMOVED AS REQUIRED AND DIRECTED BY THE ENGINEER. COST TO BE INCLUDED IN PRICE BID FOR SITE CLEARING. EXISTING SITE CONDITIONS MAY VARY FROM THOSE SHOWN ON THESE PLANS.

REMOVAL LEGEND	
	TREES TO BE REMOVED
	REMOVAL ITEMS
	ABANDONEMENT ITEMS
	ASPHALT REMOVAL
	GRAVEL REMOVAL
	CONCRETE REMOVAL
	SIDEWALK/ RAMP REMOVAL
	CONCRETE DRIVE REMOVAL

EXISTING NW-25TH-ST OBSTRUCTION CONFLICTS			
NO.	C STATION, OFFSET	DESCRIPTION	NOTE
11	8+01.62, 25.19 LT	TREE	PROTECT
12	8+21.23, 25.94 LT	TREE	PROTECT
13	10+44.89, 17.80 LT	OHE POLE	PROTECT
14	12+61.83, 15.92 LT	WATER METER	PROTECT (ADJUST TO GRADE)
15	12+95.40, 15.43 LT	WATER METER	PROTECT (ADJUST TO GRADE)
16	13+35.98, 16.60 LT	FIRE HYDRANT	PROTECT (ADJUST TO GRADE)
17	13+99.15, 17.30 LT	STOP SIGN	REMOVE & RESET
18	14+34.45, 15.58 LT	WATER METER	PROTECT (ADJUST TO GRADE)
19	14+85.07, 16.43 LT	WATER METER	PROTECT (ADJUST TO GRADE)
20	15+03.20, 17.99 LT	WATER METER	PROTECT (ADJUST TO GRADE)
21	15+12.44, 18.16 LT	TREE	REMOVE (30" CALIPER)



DATE	BY	REV	REVISION

DUNAWAY 550 Bailey Avenue
 Suite 400
 Fort Worth, TX 76107
 (TX REG. F-1114) 817-335-1121

FORT WORTH

PROJ NO. 101264 FILE NO. K-2630

Texas Department of Transportation
 © 2020

2018 SAFE ROUTES TO SCHOOL IMPROVEMENTS

**NW 25TH STREET
 REMOVALS AND UTILITY ADJUSTMENTS
 STA. 8+00.00 TO STA. 16+00.00
 WJ TURNER ELEMENTARY SCHOOL**

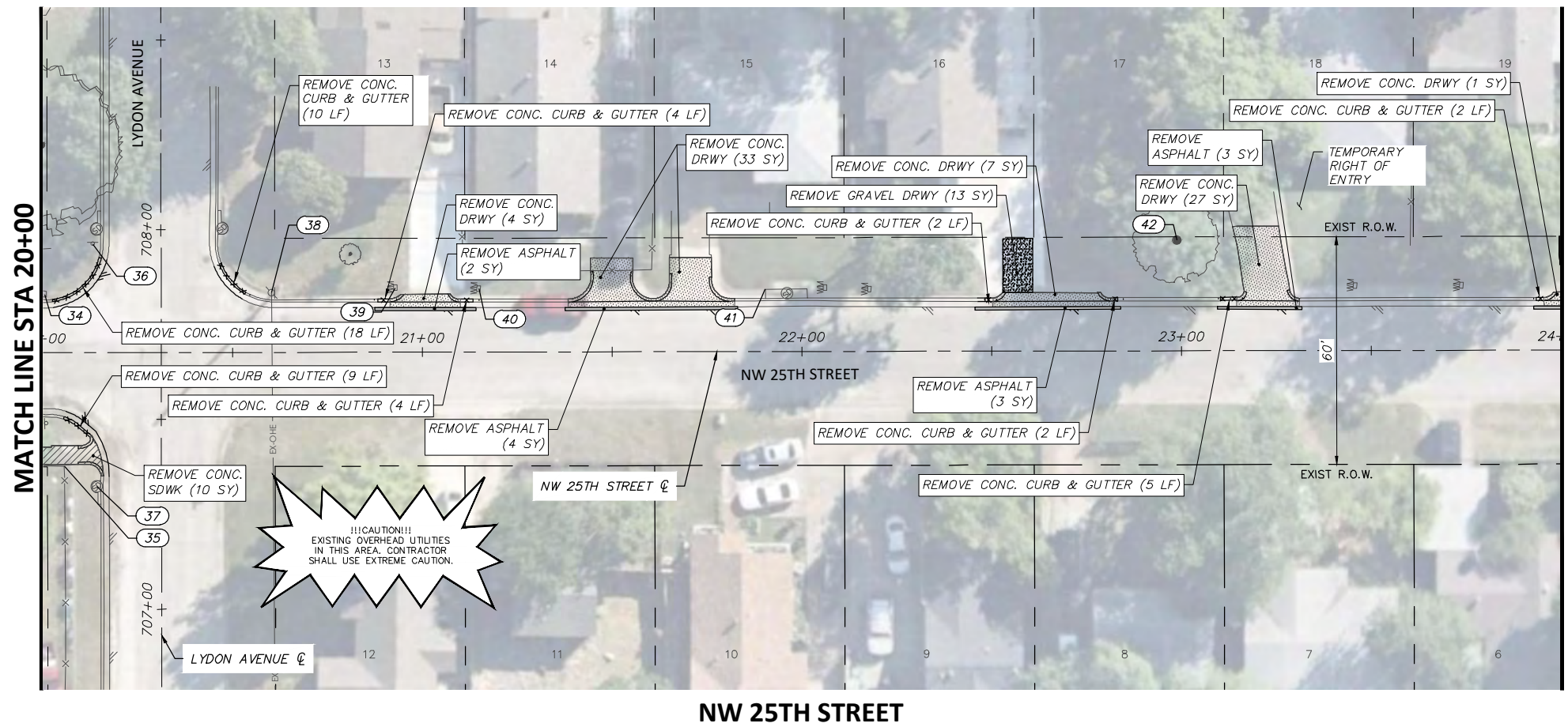
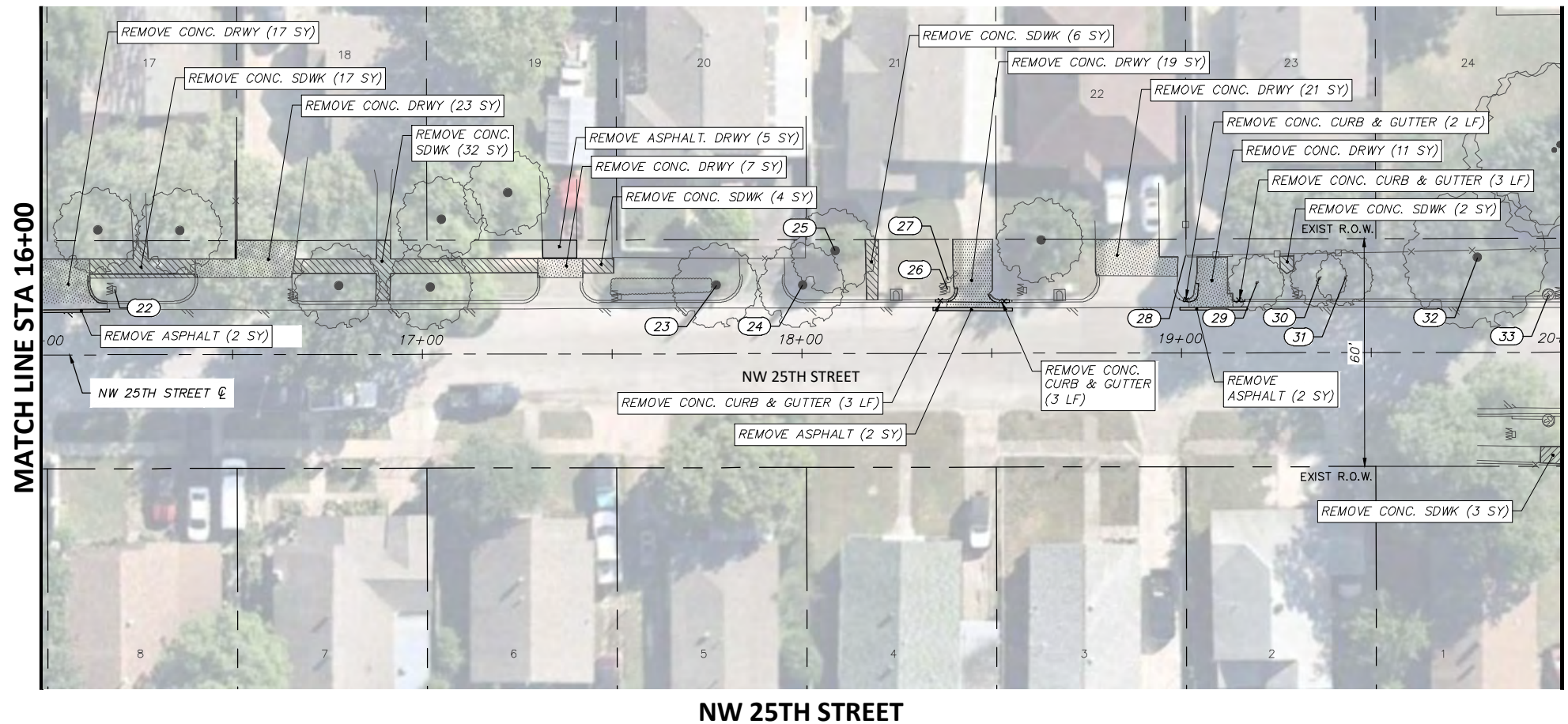
FED. RD. DIV. NO.	STATE	PROJECT NO.	HIGHWAY NO.		
6	TEXAS	STP 2021(929)TP	N/A		
STATE DISTRICT	COUNTY	CONTROL NO.	SECTION NO.	JOB NO.	SHEET NO.
FTW	TARRANT	0902	90	082	53

6/14/2021

Joshua Wright

FULL PATH: G:\Production\500\002600\2684\002\Civil\Drawings\Plot Sheets\RMVL-PLAN-WJT\25TH ST

FILENAME: RMVL-PL-25.dwg
PLOTTED BY: LEE MONASTESSE
PLOTTED WITH: _DWG TO PDF.PC3



NOTE:
RETURN ALL REMOVED SIGNS TO TPW FIELD OPERATIONS SUPERVISOR SIDNEY RUTTER (SIDNEY.RUTTER@FORTWORTHTEXAS.GOV) AT 5001 JAMES AVE, FORT WORTH, TX.
ITEMS NOT CALLED OUT FOR REMOVAL SHALL BE CLEARED & REMOVED AS REQUIRED AND DIRECTED BY THE ENGINEER. COST TO BE INCLUDED IN PRICE BID FOR SITE CLEARING. EXISTING SITE CONDITIONS MAY VARY FROM THOSE SHOWN ON THESE PLANS.

REMOVAL LEGEND

- TREES TO BE REMOVED
- REMOVAL ITEMS
- ABANDONEMENT ITEMS
- ASPHALT REMOVAL
- GRAVEL REMOVAL
- CONCRETE REMOVAL
- SIDEWALK/ RAMP REMOVAL
- CONCRETE DRIVE REMOVAL

EXISTING NW-25TH-ST OBSTRUCTION CONFLICTS

NO.	STATION, OFFSET	DESCRIPTION	NOTE
22	16+18.99, 17.24 LT	WATER METER	PROTECT (ADJUST TO GRADE)
23	17+77.59, 18.01 LT	TREE	PROTECT
24	18+00.31, 18.06 LT	TREE	PROTECT
25	18+08.90, 27.02 LT	TREE	PROTECT
26	18+38.54, 16.82 LT	WATER METER	PROTECT (ADJUST TO GRADE)
27	18+38.75, 19.23 LT	IRRIGATION ITEM	PROTECT (ADJUST TO GRADE)
28	19+01.28, 25.66 LT	FENCE	PROTECT
29	19+20.00, 18.47 LT	TREE	PROTECT
30	19+36.46, 19.56 LT	TREE	PROTECT
31	19+43.29, 19.71 LT	TREE	PROTECT
32	19+78.13, 25.03 LT	TREE	PROTECT
33	19+96.81, 15.14 LT	STORM DRAIN	PROTECT
34	20+00.53, 15.36 LT	WATER METER	PROTECT (ADJUST TO GRADE)
35	20+05.67, 29.87 RT	FENCE	PROTECT
36	20+13.26, 28.70 LT	STOP SIGN	PROTECT
37	20+14.23, 35.25 RT	STORM DRAIN	PROTECT
38	20+60.33, 15.70 LT	OHE POLE/STOP SIGN	PROTECT
39	20+92.94, 16.97 LT	WATER METER	PROTECT (ADJUST TO GRADE)
40	21+14.91, 16.72 LT	WATER METER	PROTECT (ADJUST TO GRADE)
41	21+90.49, 16.44 LT	STORM DRAIN	PROTECT
42	22+98.98, 29.13 LT	TREE	PROTECT

DATE	BY	REV	REVISION

DUNAWAY 550 Bailey Avenue
Suite 400
Fort Worth, TX 76107
817-335-1121
(TX REG. F-1114)

FORT WORTH

PROJ NO. 101264 FILE NO. K-2630

Texas Department of Transportation
© 2020

2018 SAFE ROUTES TO SCHOOL IMPROVEMENTS

**NW 25TH STREET
REMOVALS AND UTILITY ADJUSTMENTS
STA. 16+00.00 TO STA. 24+00.00
WJ TURNER ELEMENTARY SCHOOL**

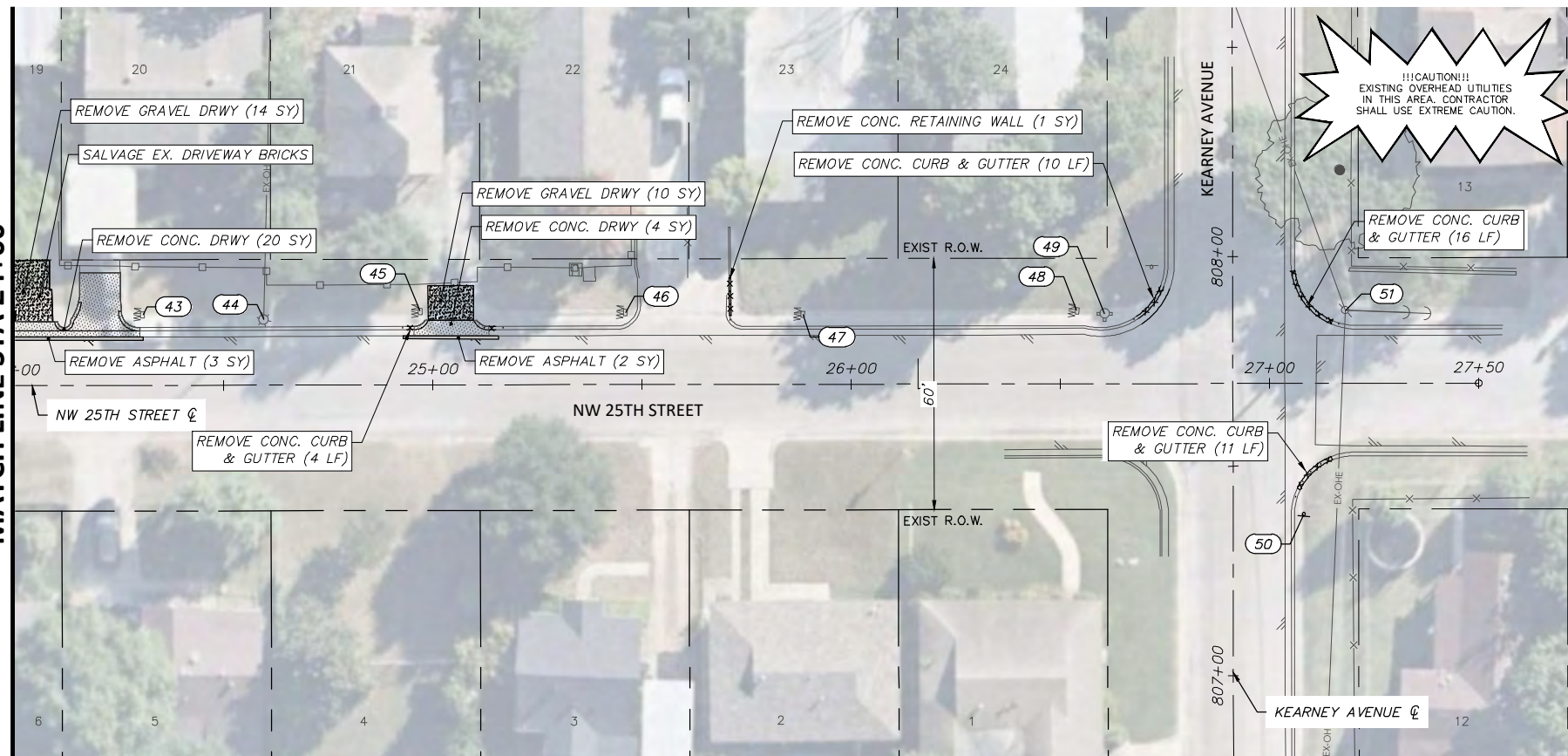
FED. RD. DIV. NO.	STATE	PROJECT NO.	HIGHWAY NO.		
6	TEXAS	STP 2021(929)TP	N/A		
STATE DISTRICT	COUNTY	CONTROL NO.	SECTION NO.	JOB NO.	SHEET NO.
FTW	TARRANT	0902	90	082	54

6/14/2021

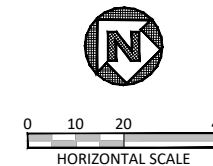
FULL PATH: G:\Production\500\002600\2684\002\Civil\Drawings\Plot Sheets\RMVL-PLAN-WJT\25TH ST

FILENAME: RMVL-PL-25.dwg
 PLOTTED BY: LEE MONASTESSE
 PLOTTED WITH: _DWG TO PDF.PC3

MATCH LINE STA 24+00



NW 25TH STREET



NOTE:

RETURN ALL REMOVED SIGNS TO TPW FIELD OPERATIONS SUPERVISOR SIDNEY RUTTER (SIDNEY.RUTTER@FORTWORTH.TEXAS.GOV) AT 5001 JAMES AVE, FORT WORTH, TX.

ITEMS NOT CALLED OUT FOR REMOVAL SHALL BE CLEARED & REMOVED AS REQUIRED AND DIRECTED BY THE ENGINEER. COST TO BE INCLUDED IN PRICE BID FOR SITE CLEARING. EXISTING SITE CONDITIONS MAY VARY FROM THOSE SHOWN ON THESE PLANS.

REMOVAL LEGEND

- TREES TO BE REMOVED
- REMOVAL ITEMS
- ABANDONMENT ITEMS
- ASPHALT REMOVAL
- GRAVEL REMOVAL
- CONCRETE REMOVAL
- SIDEWALK/RAMP REMOVAL
- CONCRETE DRIVE REMOVAL

EXISTING NW-25TH-ST OBSTRUCTION CONFLICTS

NO.	STATION, OFFSET	DESCRIPTION	NOTE
43	24+30.59, 16.82 LT	WATER METER	PROTECT (ADJUST TO GRADE)
44	24+59.59, 15.66 LT	LIGHT POLE	PROTECT
45	24+97.04, 17.56 LT	WATER METER	PROTECT (ADJUST TO GRADE)
46	25+46.02, 17.18 LT	WATER METER	PROTECT (ADJUST TO GRADE)
47	25+88.42, 16.71 LT	WATER METER	PROTECT (ADJUST TO GRADE)
48	26+53.97, 17.41 LT	WATER METER	PROTECT (ADJUST TO GRADE)
49	26+60.63, 16.72 LT	FIRE HYDRANT	PROTECT (ADJUST TO GRADE)
50	27+08.15, 31.34 RT	STOP SIGN	REMOVE & RESET
51	27+18.19, 17.43 LT	OHE POLE	PROTECT

DATE	BY	REV	REVISION

DUNAWAY 550 Bailey Avenue
 Suite 400
 Fort Worth, TX 76107
 (TX REG #1114) 817-335-1121

FORT WORTH
 PROJ NO. 101264 FILE NO. K-2630

Texas Department of Transportation
 © 2020

2018 SAFE ROUTES TO SCHOOL IMPROVEMENTS

**NW 25TH STREET
 REMOVALS AND UTILITY ADJUSTMENTS
 STA. 24+00.00 TO STA. 27+50.00
 WJ TURNER ELEMENTARY SCHOOL**

FED. RD. DIV. NO.	STATE	PROJECT NO.	HIGHWAY NO.		
6	TEXAS	STP 2021(929)TP	N/A		
STATE DISTRICT	COUNTY	CONTROL NO.	SECTION NO.	JOB NO.	SHEET NO.
FTW	TARRANT	0902	90	082	55

6/14/2021

 Joshua Wright

FULL PATH: G:\Production\500\002600\2684\002\Civil\Drawings\Plot Sheets\RMV-PLAN-WJT\26TH ST

FILENAME: RMV-PL-26.dwg
 PLOTTED BY: LEE MONASTESSE
 PLOTTED WITH: _DWG TO PDF.PC3



NW 26TH STREET

MATCH LINE STA 104+00

NOTE:

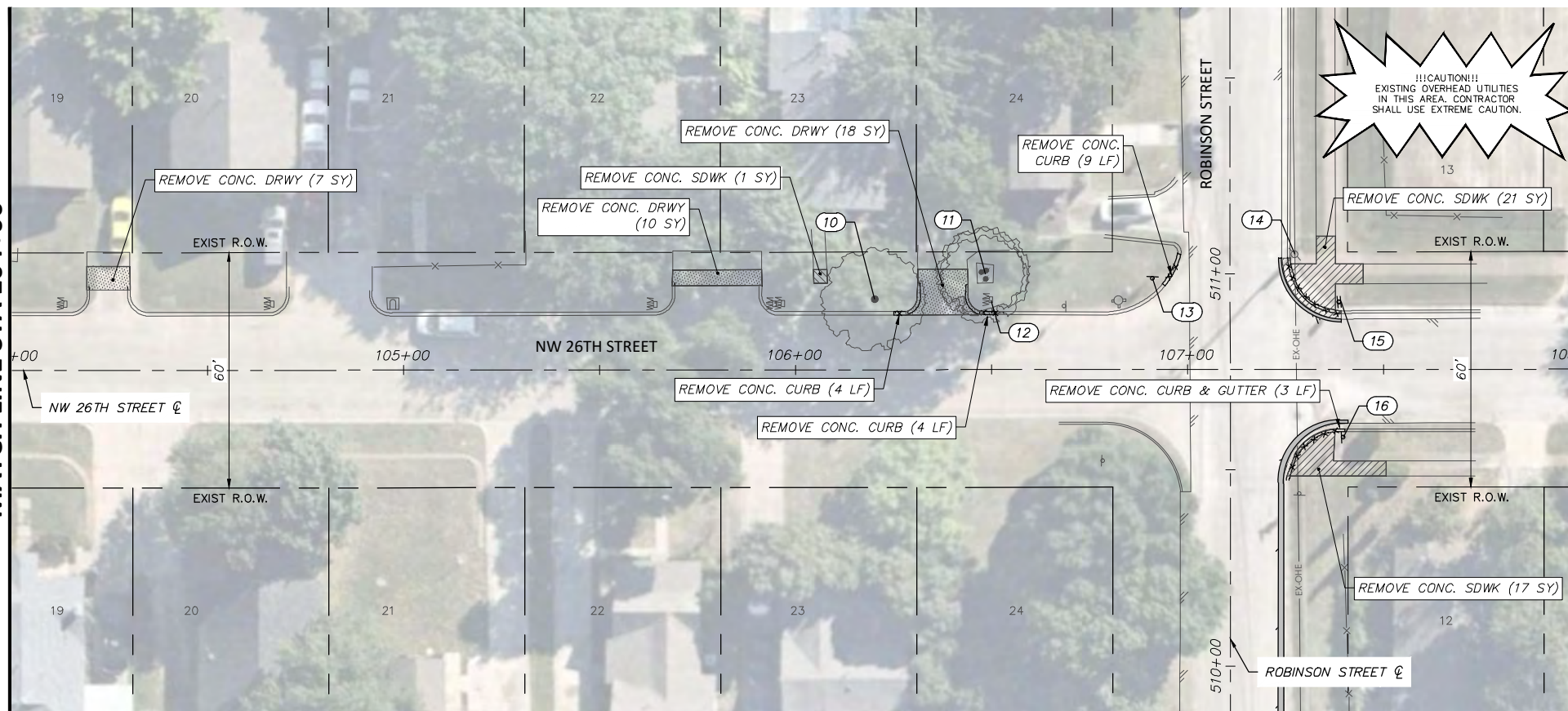
RETURN ALL REMOVED SIGNS TO TPW FIELD OPERATIONS SUPERVISOR SIDNEY RUTTER (SIDNEY.RUTTER@FORTWORTHTEXAS.GOV) AT 5001 JAMES AVE, FORT WORTH, TX.

ITEMS NOT CALLED OUT FOR REMOVAL SHALL BE CLEARED & REMOVED AS REQUIRED AND DIRECTED BY THE ENGINEER. COST TO BE INCLUDED IN PRICE BID FOR SITE CLEARING. EXISTING SITE CONDITIONS MAY VARY FROM THOSE SHOWN ON THESE PLANS.

REMOVAL LEGEND

- TREES TO BE REMOVED
- REMOVAL ITEMS
- ABANDONEMENT ITEMS
- ASPHALT REMOVAL
- GRAVEL REMOVAL
- CONCRETE REMOVAL
- SIDEWALK/ RAMP REMOVAL
- CONCRETE DRIVE REMOVAL

EXISTING NW-26TH-ST OBSTRUCTION CONFLICTS			
NO.	☉ STATION, OFFSET	DESCRIPTION	NOTE
1	100+74.26, 42.55 RT	TREE	PROTECT
2	100+79.44, 20.03 LT	STOP SIGN	PROTECT
3	101+27.67, 17.13 LT	WATER METER	PROTECT (ADJUST TO GRADE)
4	101+52.76, 25.24 LT	TREE	PROTECT
5	101+70.38, 17.13 LT	WATER METER	PROTECT (ADJUST TO GRADE)
6	102+09.14, 24.56 LT	TREE	REMOVE (10" CALIPER)
7	102+15.55, 23.82 LT	TREE	REMOVE (4" CALIPER)
8	102+82.87, 21.65 LT	TREE	PROTECT
9	103+05.78, 22.55 LT	TREE	PROTECT
10	106+20.32, 17.98 LT	TREE	PROTECT
11	106+48.47, 24.27 LT	TREE	PROTECT
12	106+49.95, 17.76 LT	WATER METER	PROTECT (ADJUST TO GRADE)
13	106+91.11, 23.26 LT	STOP SIGN	REMOVE & RESET
14	107+27.44, 29.34 LT	OHE POLE	PROTECT
15	107+39.15, 17.23 LT	STOP SIGN	REMOVE & RESET
16	107+39.77, 17.40 RT	DO NOT ENTER SIGN	REMOVE & RESET



NW 26TH STREET

MATCH LINE STA 104+00

STA 108+00 *

* NO WORK IS PERFORMED BETWEEN STA 108+00 TO STA 113+00.

DATE	BY	REV	REVISION

DUNAWAY 550 Bailey Avenue
 Suite 400
 Fort Worth, TX 76107
 817-335-1121
 (TX REG F-1114)

FORT WORTH
 PROJ NO. 101264 FILE NO. K-2630

Texas Department of Transportation
 © 2020

2018 SAFE ROUTES TO SCHOOL IMPROVEMENTS

**NW 26TH STREET
 REMOVALS AND UTILITY ADJUSTMENTS
 STA. 100+00.00 TO STA. 108+00.00
 WJ TURNER ELEMENTARY SCHOOL**

FED. RD. DIV. NO.	STATE	PROJECT NO.	HIGHWAY NO.		
6	TEXAS	STP 2021(929)TP	N/A		
STATE DISTRICT	COUNTY	CONTROL NO.	SECTION NO.	JOB NO.	SHEET NO.
FTW	TARRANT	0902	90	082	56

6/14/2021

 Joshua Wright