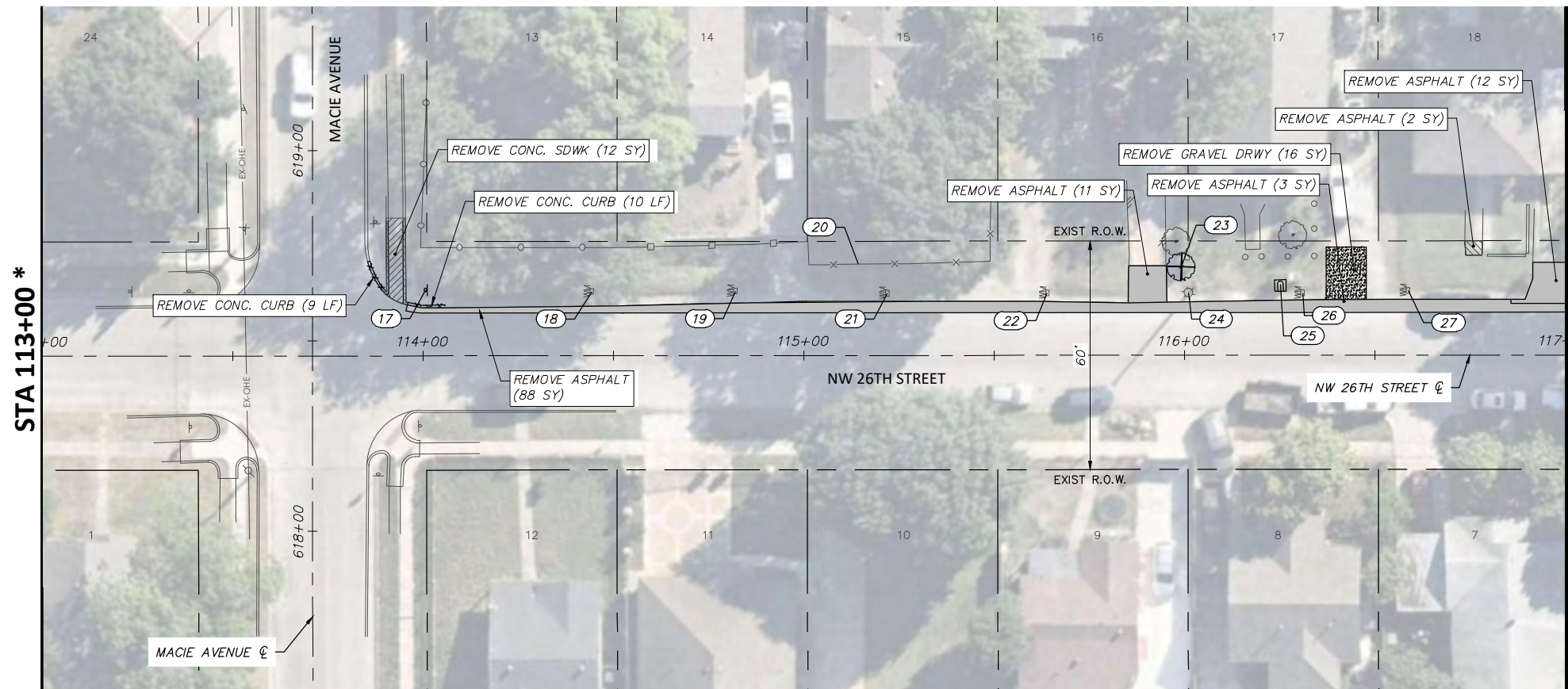


FULL PATH: G:\Production\500\002600\2684\002\Civil\Drawings\Plot Sheets\RMVL-PLAN-WJT\26TH ST

FILENAME: RMVL-PL-26.dwg
 PLOTTED BY: LEE MONASTESSE
 PLOTTED WITH: _DWG TO PDF.PC3

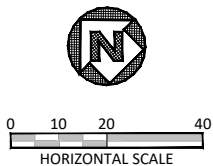


NW 26TH STREET



MATCH LINE STA 117+00

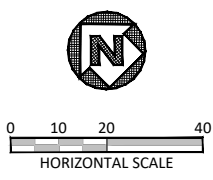
MATCH LINE STA 121+00



NOTE:
 RETURN ALL REMOVED SIGNS TO TPW FIELD OPERATIONS SUPERVISOR SIDNEY RUTTER (SIDNEY.RUTTER@FORTWORTHTEXAS.GOV) AT 5001 JAMES AVE, FORT WORTH, TX.
 ITEMS NOT CALLED OUT FOR REMOVAL SHALL BE CLEARED & REMOVED AS REQUIRED AND DIRECTED BY THE ENGINEER. COST TO BE INCLUDED IN PRICE BID FOR SITE CLEARING. EXISTING SITE CONDITIONS MAY VARY FROM THOSE SHOWN ON THESE PLANS.

REMOVAL LEGEND	
	TREES TO BE REMOVED
	REMOVAL ITEMS
	ABANDONEMENT ITEMS
	ASPHALT REMOVAL
	GRAVEL REMOVAL
	CONCRETE REMOVAL
	SIDEWALK/ RAMP REMOVAL
	CONCRETE DRIVE REMOVAL

EXISTING NW-26TH-ST OBSTRUCTION CONFLICTS			
NO.	STATION, OFFSET	DESCRIPTION	NOTE
17	114+00.67, 17.24 LT	STOP SIGN	REMOVE & RESET
18	114+44.35, 16.81 LT	WATER METER	PROTECT (ADJUST TO GRADE)
19	114+82.05, 16.87 LT	WATER METER	PROTECT (ADJUST TO GRADE)
20	115+14.34, 23.96 LT	FENCE	PROTECT
21	115+21.96, 16.32 LT	WATER METER	PROTECT (ADJUST TO GRADE)
22	115+64.00, 16.41 LT	WATER METER	PROTECT (ADJUST TO GRADE)
23	115+99.18, 23.24 LT	TREE	REMOVE (CLUSTER)
24	116+01.08, 16.36 LT	LIGHT POLE	PROTECT
25	116+25.20, 18.61 LT	MAILBOX	RECONSTRUCT
26	116+31.04, 16.33 LT	WATER METER	PROTECT (ADJUST TO GRADE)
27	116+58.70, 16.94 LT	WATER METER	PROTECT (ADJUST TO GRADE)
28	117+19.53, 18.70 LT	WATER METER	PROTECT (ADJUST TO GRADE)
29	117+50.70, 17.21 LT	CROSS WALK AHEAD SIGN	REMOVE & RESET
30	118+27.72, 17.62 LT	WATER METER	PROTECT (ADJUST TO GRADE)
31	118+82.43, 16.08 LT	WATER METER	PROTECT (ADJUST TO GRADE)
32	119+16.93, 16.34 LT	WATER METER	PROTECT (ADJUST TO GRADE)
33	119+99.66, 20.23 RT	STOP SIGN	REMOVE & RESET
34	120+00.19, 17.16 LT	FIRE HYDRANT	PROTECT (ADJUST TO GRADE)
35	120+04.22, 38.18 RT	FENCE	PROTECT



* NO WORK IS PERFORMED BETWEEN STA 108+00 TO STA 113+00.

6/14/2021

 J. Wright

DATE	BY	REV	REVISION

DUNAWAY 550 Bailey Avenue
 Suite 400
 Fort Worth, TX 76107
 (TX REG. F-1114) 817-335-1121

FORT WORTH

PROJ NO. 101264 FILE NO. K-2630

Texas Department of Transportation
 © 2020

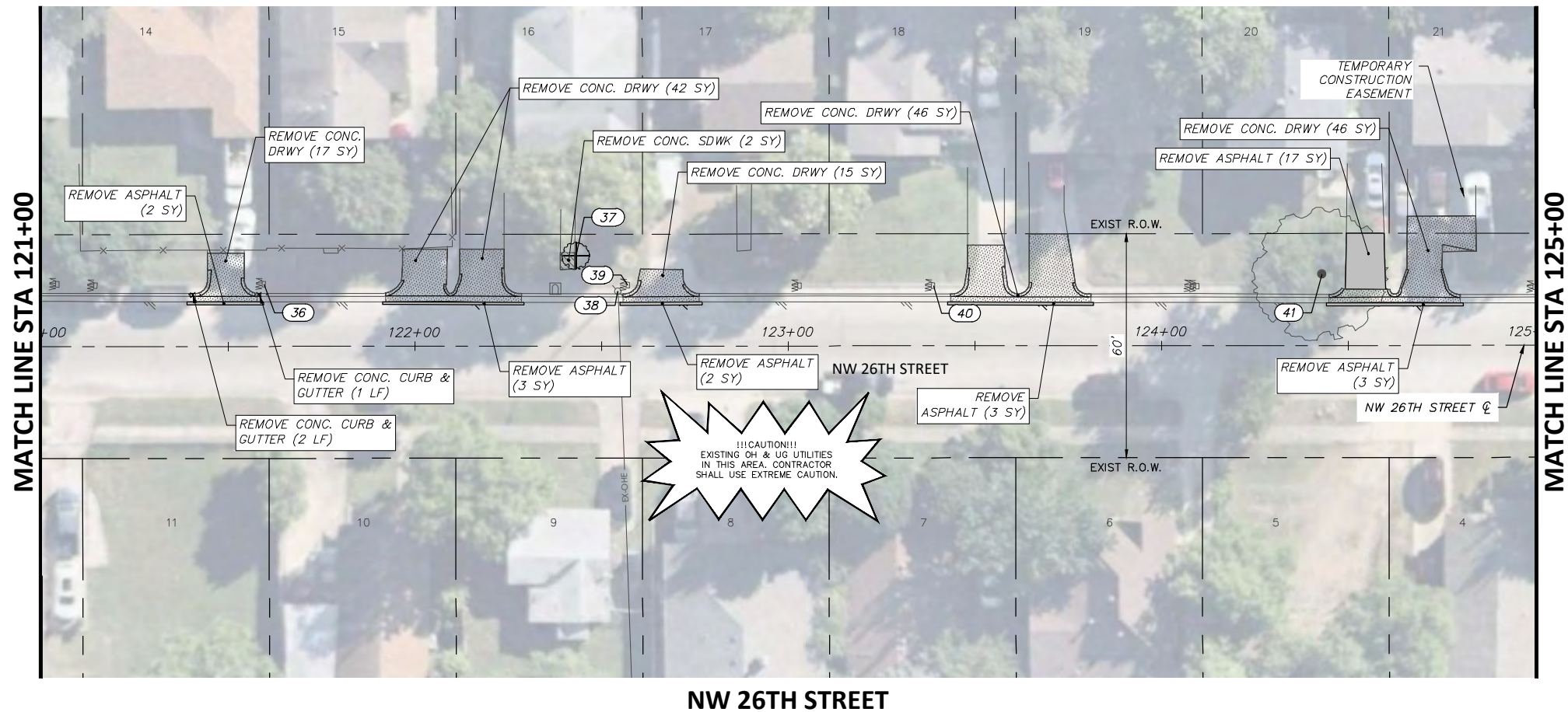
2018 SAFE ROUTES TO SCHOOL IMPROVEMENTS

**NW 26TH STREET
 REMOVALS AND UTILITY ADJUSTMENTS
 STA. 113+00.00 TO STA. 121+00.00
 WJ TURNER ELEMENTARY SCHOOL**

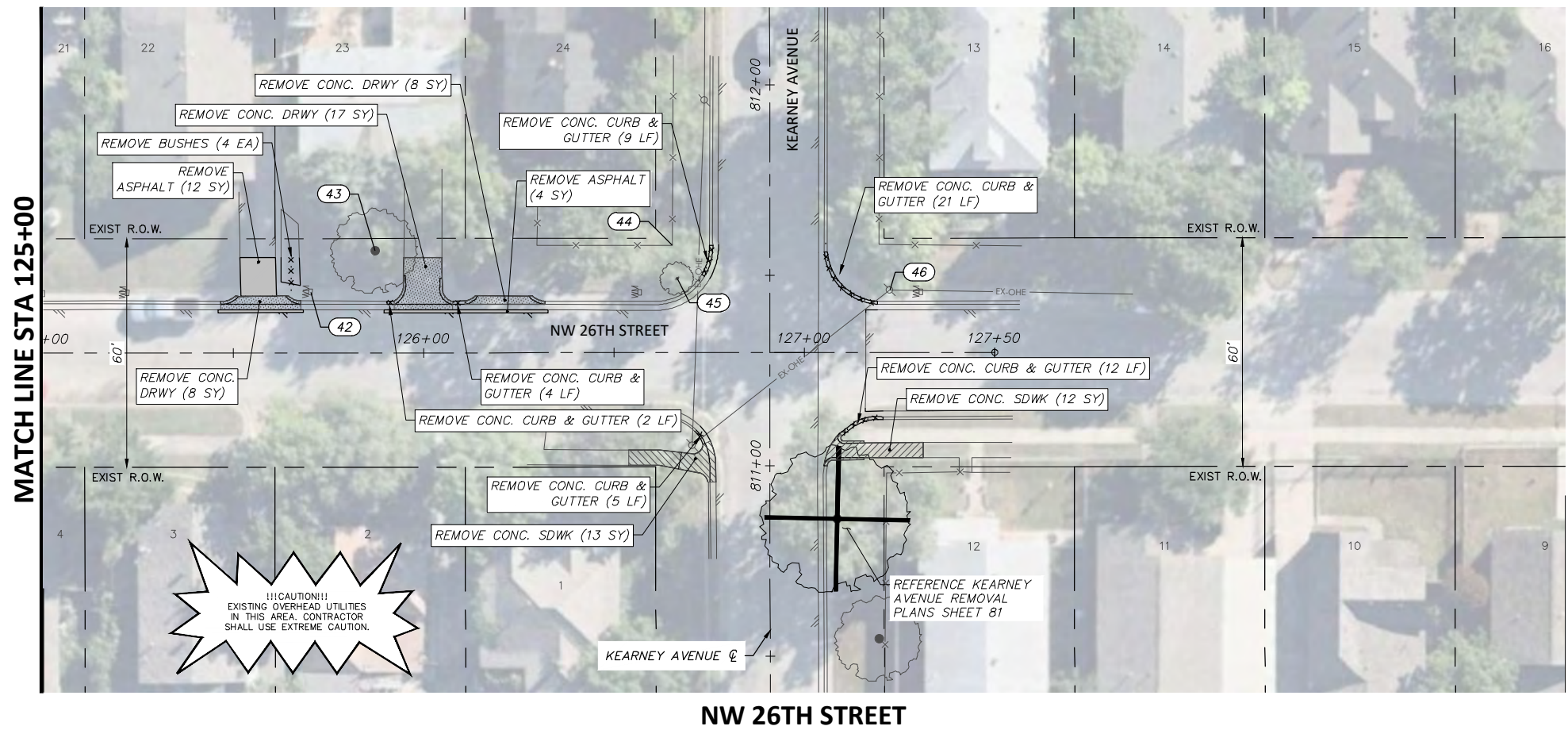
FED. RD. DIV. NO.	STATE	PROJECT NO.	HIGHWAY NO.		
6	TEXAS	STP 2021(929)TP	N/A		
STATE DISTRICT	COUNTY	CONTROL NO.	SECTION NO.	JOB NO.	SHEET NO.
FTW	TARRANT	0902	90	082	57

FULL PATH: G:\Production\500\002600\2684\002\Civil\Drawings\Plot Sheets\RMV-PLAN_WJT\26TH ST

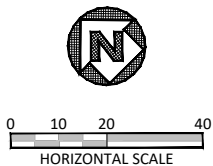
FILENAME: RMV-PL-26.dwg
 PLOTTED BY: LEE MONASTESSE
 PLOTTED WITH: _DWG TO PDF.PC3



NW 26TH STREET



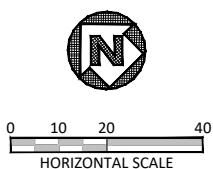
NW 26TH STREET



NOTE:
 RETURN ALL REMOVED SIGNS TO TPW FIELD OPERATIONS SUPERVISOR SIDNEY RUTTER (SIDNEY.RUTTER@FORTWORTHTEXAS.GOV) AT 5001 JAMES AVE, FORT WORTH, TX.
 ITEMS NOT CALLED OUT FOR REMOVAL SHALL BE CLEARED & REMOVED AS REQUIRED AND DIRECTED BY THE ENGINEER. COST TO BE INCLUDED IN PRICE BID FOR SITE CLEARING. EXISTING SITE CONDITIONS MAY VARY FROM THOSE SHOWN ON THESE PLANS.

REMOVAL LEGEND	
	TREES TO BE REMOVED
	REMOVAL ITEMS
	ABANDONEMENT ITEMS
	ASPHALT REMOVAL
	GRAVEL REMOVAL
	CONCRETE REMOVAL
	SIDEWALK/ RAMP REMOVAL
	CONCRETE DRIVE REMOVAL

EXISTING NW-26TH-ST OBSTRUCTION CONFLICTS			
NO.	STATION, OFFSET	DESCRIPTION	NOTE
36	121+59.52, 16.68 LT	WATER METER	PROTECT
37	122+43.17, 24.21 LT	TREE	REMOVE (6" CALIPER)
38	122+54.38, 14.70 LT	OHE POLE	PROTECT
39	122+57.06, 16.33 LT	WATER METER	PROTECT
40	123+38.82, 16.09 LT	WATER METER	PROTECT
41	124+42.96, 19.09 LT	TREE	PROTECT
42	125+70.32, 15.99 LT	WATER METER	PROTECT
43	125+87.31, 26.77 LT	TREE	PROTECT
44	126+65.31, 28.18 LT	FENCE	PROTECT
45	126+66.63, 19.45 LT	TREE	PROTECT
46	127+22.45, 16.38 LT	OHE POLE	PROTECT



6/14/2021

 Joshua Wright
 LICENSED PROFESSIONAL ENGINEER

DATE	BY	REV	REVISION

DUNAWAY 550 Bailey Avenue
 Suite 400
 Fort Worth, TX 76107
 (TX REG F-1114) 817-335-1121

FORT WORTH

PROJ NO. 101264 FILE NO. K-2630

Texas Department of Transportation
 © 2020

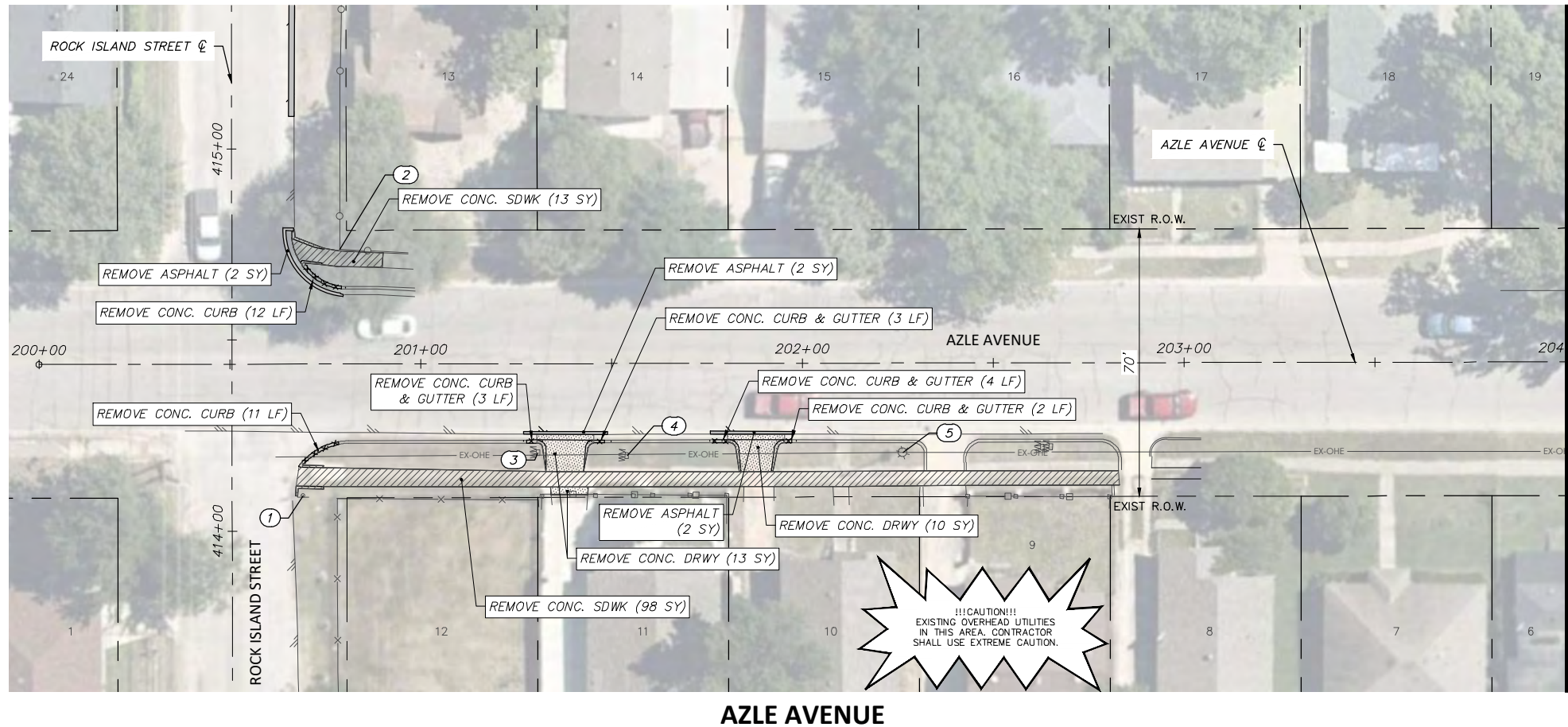
2018 SAFE ROUTES TO SCHOOL IMPROVEMENTS

**NW 26TH STREET
 REMOVALS AND UTILITY ADJUSTMENTS
 STA. 121+00.00 TO STA. 127+50.00
 WJ TURNER ELEMENTARY SCHOOL**

FED. RD. DIV. NO.	STATE	PROJECT NO.	HIGHWAY NO.		
6	TEXAS	STP 2021(929)TP	N/A		
STATE DISTRICT	COUNTY	CONTROL NO.	SECTION NO.	JOB NO.	SHEET NO.
FTW	TARRANT	0902	90	082	58

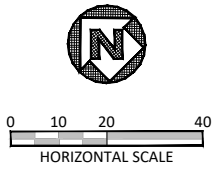
FULL PATH: G:\Production\500\002600\2684\002\Civil\Drawings\Plot Sheets\RMVL-PLAN WJT\AZLE AVE

FILENAME: RMVL-PL-AZ.dwg
 PLOTTED BY: LEE MONASTESSE
 PLOTTED WITH: _DWG TO PDF.PC3



AZLE AVENUE

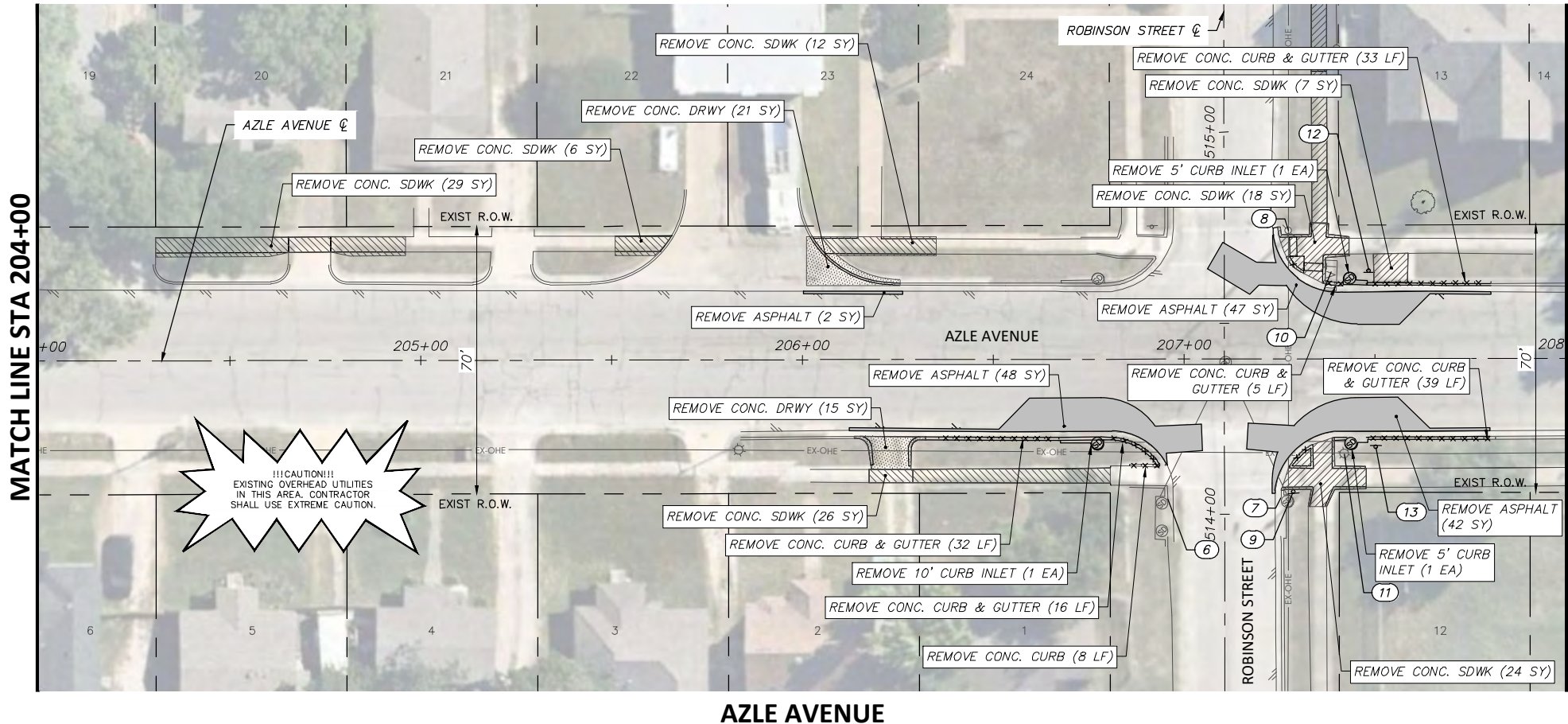
MATCH LINE STA 204+00



NOTE:
 RETURN ALL REMOVED SIGNS TO TPW FIELD OPERATIONS SUPERVISOR SIDNEY RUTTER (SIDNEY.RUTTER@FORTWORTH.TEXAS.GOV) AT 5001 JAMES AVE, FORT WORTH, TX.
 ITEMS NOT CALLED OUT FOR REMOVAL SHALL BE CLEARED & REMOVED AS REQUIRED AND DIRECTED BY THE ENGINEER. COST TO BE INCLUDED IN PRICE BID FOR SITE CLEARING. EXISTING SITE CONDITIONS MAY VARY FROM THOSE SHOWN ON THESE PLANS.

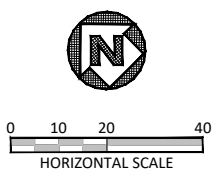
REMOVAL LEGEND	
	TREES TO BE REMOVED
	REMOVAL ITEMS
	ABANDONEMENT ITEMS
	ASPHALT REMOVAL
	GRAVEL REMOVAL
	CONCRETE REMOVAL
	SIDEWALK/ RAMP REMOVAL
	CONCRETE DRIVE REMOVAL

EXISTING AZLE-AVE OBSTRUCTION CONFLICTS			
NO.	CL STATION, OFFSET	DESCRIPTION	NOTE
1	200+69.22, 34.40 RT	STOP SIGN	PROTECT
2	200+78.79, 29.98 LT	FENCE	PROTECT
3	201+30.78, 23.27 RT	WATER METER	PROTECT (ADJUST TO GRADE)
4	201+53.99, 24.15 RT	WATER METER	PROTECT (ADJUST TO GRADE)
5	202+26.35, 23.45 RT	LIGHT POLE	PROTECT
6	206+95.66, 36.48 RT	STORM DRAIN	PROTECT
7	207+25.45, 36.27 RT	STORM DRAIN	PROTECT
8	207+27.50, 33.54 LT	OHE POLE	PROTECT
9	207+28.62, 34.75 RT	STOP SIGN	REMOVE & RESET
10	207+38.76, 22.86 LT	UNKNOWN VAULT	PROTECT
11	207+42.02, 24.78 RT	LIGHT POLE	PROTECT
12	207+48.56, 23.04 LT	TRAFFIC/BUS STOP SIGN	REMOVE & RESET
13	207+50.30, 23.14 RT	TRAFFIC SIGN	REMOVE & RESET



AZLE AVENUE

MATCH LINE STA 208+00



DATE	BY	REV	REVISION

DUNAWAY 550 Bailey Avenue
 Suite 400
 Fort Worth, TX 76107
 (TX REG. F-1114) 817-335-1121

FORT WORTH

PROJ NO. 101264 FILE NO. K-2630

Texas Department of Transportation
 © 2020

2018 SAFE ROUTES TO SCHOOL IMPROVEMENTS

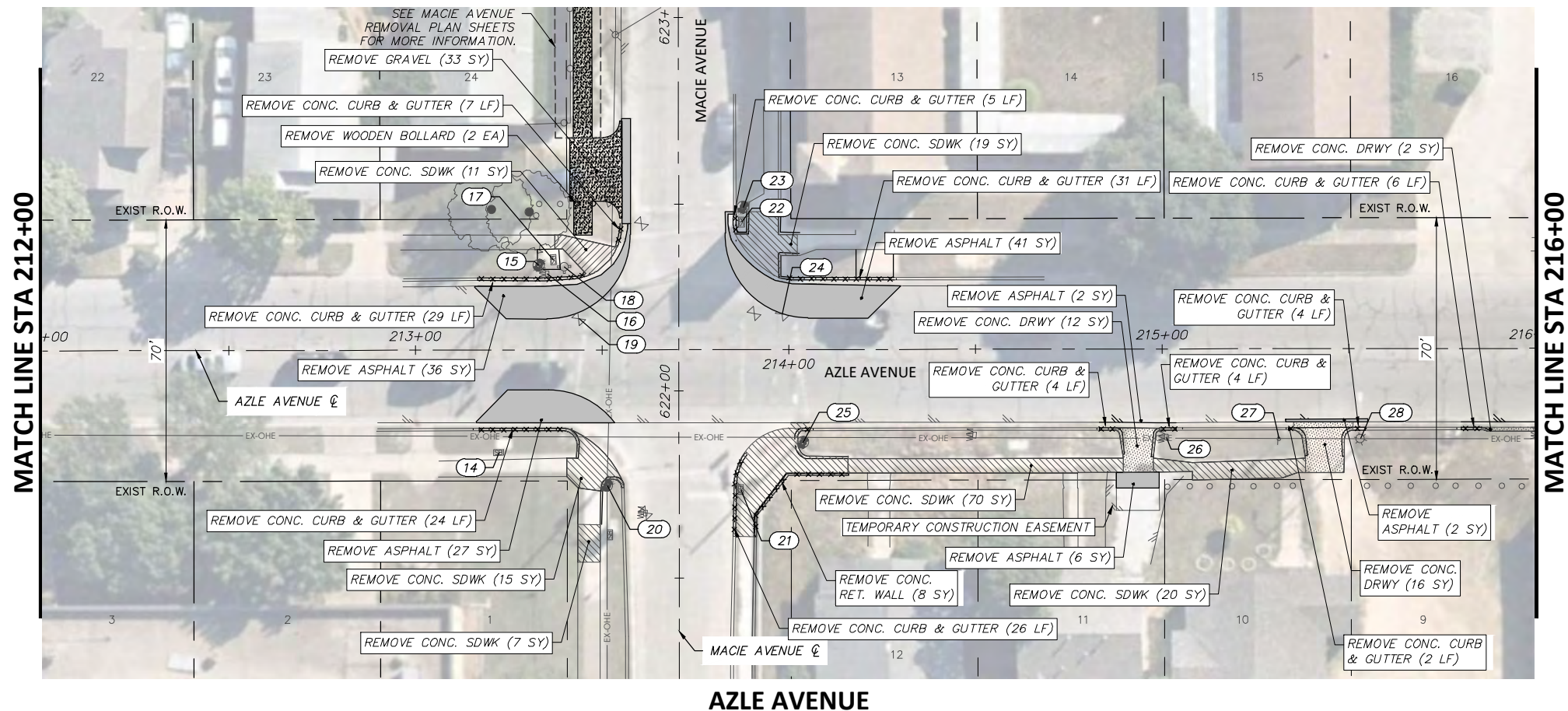
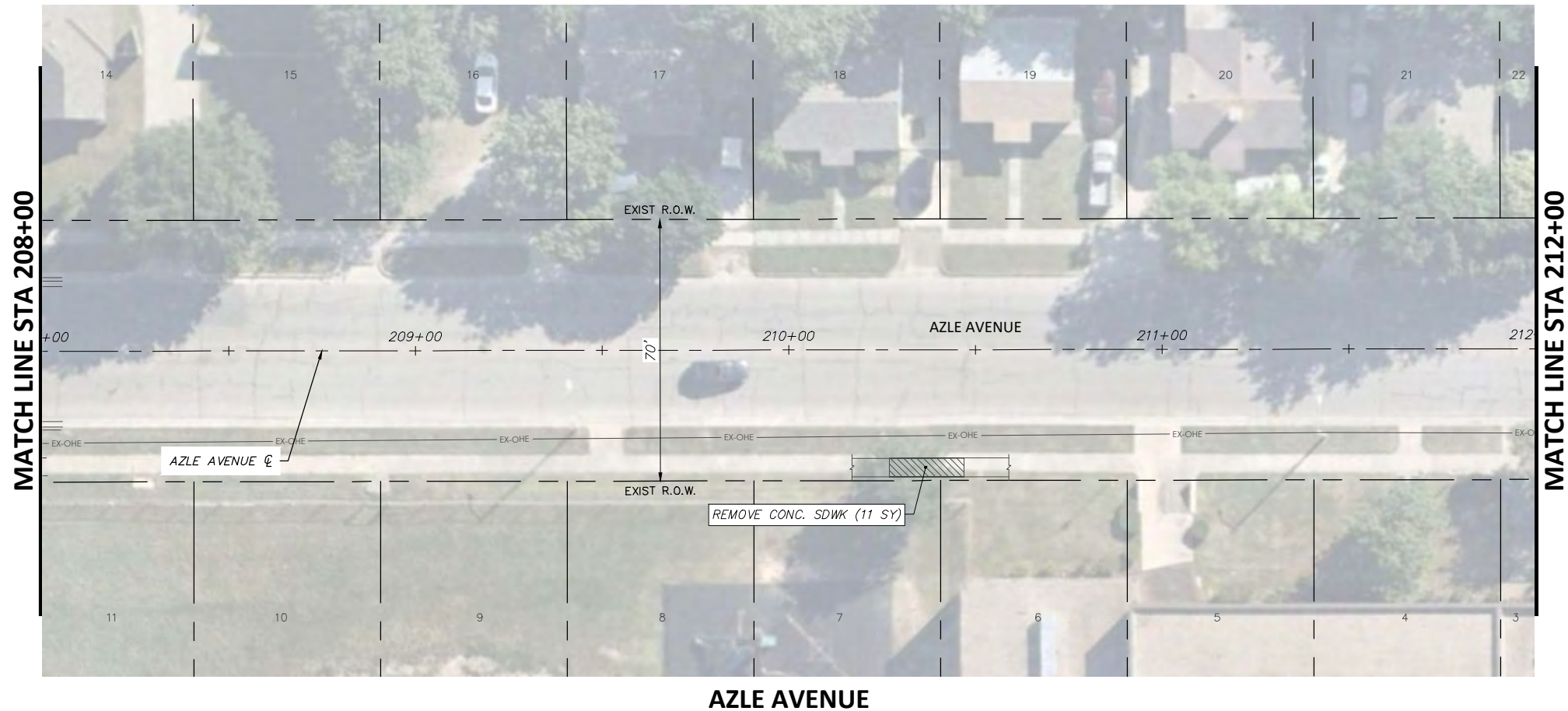
AZLE AVENUE
REMOVALS AND UTILITY ADJUSTMENTS
STA. 200+00.00 TO STA. 208+00.00
WJ TURNER ELEMENTARY SCHOOL

FED. RD. DIV. NO.	STATE	PROJECT NO.	HIGHWAY NO.		
6	TEXAS	STP 2021(929)TP	N/A		
STATE DISTRICT	COUNTY	CONTROL NO.	SECTION NO.	JOB NO.	SHEET NO.
FTW	TARRANT	0902	90	082	59

6/14/2021

FULL PATH: G:\Production\500\002600\2684\002\Civil\Drawings\Plot Sheets\RMV-PLAN WJT\AZLE AVE

FILENAME: RMV-PL-AZ.dwg
 PLOTTED BY: LEE MONASTESSE
 PLOTTED WITH: _DWG TO PDF.PC3



NOTE:
 RETURN ALL REMOVED SIGNS TO TPW FIELD OPERATIONS SUPERVISOR SIDNEY RUTTER (SIDNEY.RUTTER@FORTWORTHTEXAS.GOV) AT 5001 JAMES AVE, FORT WORTH, TX.
 ITEMS NOT CALLED OUT FOR REMOVAL SHALL BE CLEARED & REMOVED AS REQUIRED AND DIRECTED BY THE ENGINEER. COST TO BE INCLUDED IN PRICE BID FOR SITE CLEARING. EXISTING SITE CONDITIONS MAY VARY FROM THOSE SHOWN ON THESE PLANS.

REMOVAL LEGEND

- TREES TO BE REMOVED
- REMOVAL ITEMS
- ABANDONEMENT ITEMS
- ASPHALT REMOVAL
- GRAVEL REMOVAL
- CONCRETE REMOVAL
- SIDEWALK/ RAMP REMOVAL
- CONCRETE DRIVE REMOVAL

EXISTING AZLE-AVE OBSTRUCTION CONFLICTS

NO.	STATION, OFFSET	DESCRIPTION	NOTE
14	213+22.56, 27.29 RT	TRAFFIC SIGNAL BOX	PROTECT
15	213+33.20, 22.69 LT	TRAFFIC SIGNAL POLE	PROTECT
16	213+35.34, 20.40 LT	WATER METER	PROTECT (ADJUST TO GRADE)
17	213+37.07, 24.06 LT	TRAFFIC SIGNAL BOX	PROTECT
18	213+39.91, 22.29 LT	FIRE HYDRANT	PROTECT (ADJUST TO GRADE)
19	213+43.80, 8.39 LT	WATER VALVE	PROTECT (ADJUST TO GRADE)
20	213+51.34, 36.31 RT	TRAFFIC SIGNAL POLE	PROTECT
21	213+87.09, 37.39 RT	TRAFFIC SIGNAL BOX	PROTECT
22	213+87.45, 34.23 LT	SIGNAL BOX	PROTECT
23	213+87.93, 38.09 LT	TRAFFIC SIGNAL POLE	PROTECT
24	213+98.30, 9.49 LT	WATER VALVE	PROTECT (ADJUST TO GRADE)
25	214+03.85, 24.84 RT	TRAFFIC SIGNAL POLE	PROTECT
26	215+01.11, 23.60 RT	WATER METER	PROTECT (ADJUST TO GRADE)
27	215+31.39, 24.21 RT	TRAFFIC SIGN	PROTECT
28	215+53.13, 24.14 RT	LIGHT POLE	PROTECT

DUNAWAY 550 Bailey Avenue, Suite 400, Fort Worth, TX 76107, 817-335-1121
 (TX REG. F-1114)

FORT WORTH

PROJ NO. 101264 FILE NO. K-2630

Texas Department of Transportation © 2020

2018 SAFE ROUTES TO SCHOOL IMPROVEMENTS

AZLE AVENUE REMOVALS AND UTILITY ADJUSTMENTS STA. 208+00.00 TO STA. 216+00.00 WJ TURNER ELEMENTARY SCHOOL

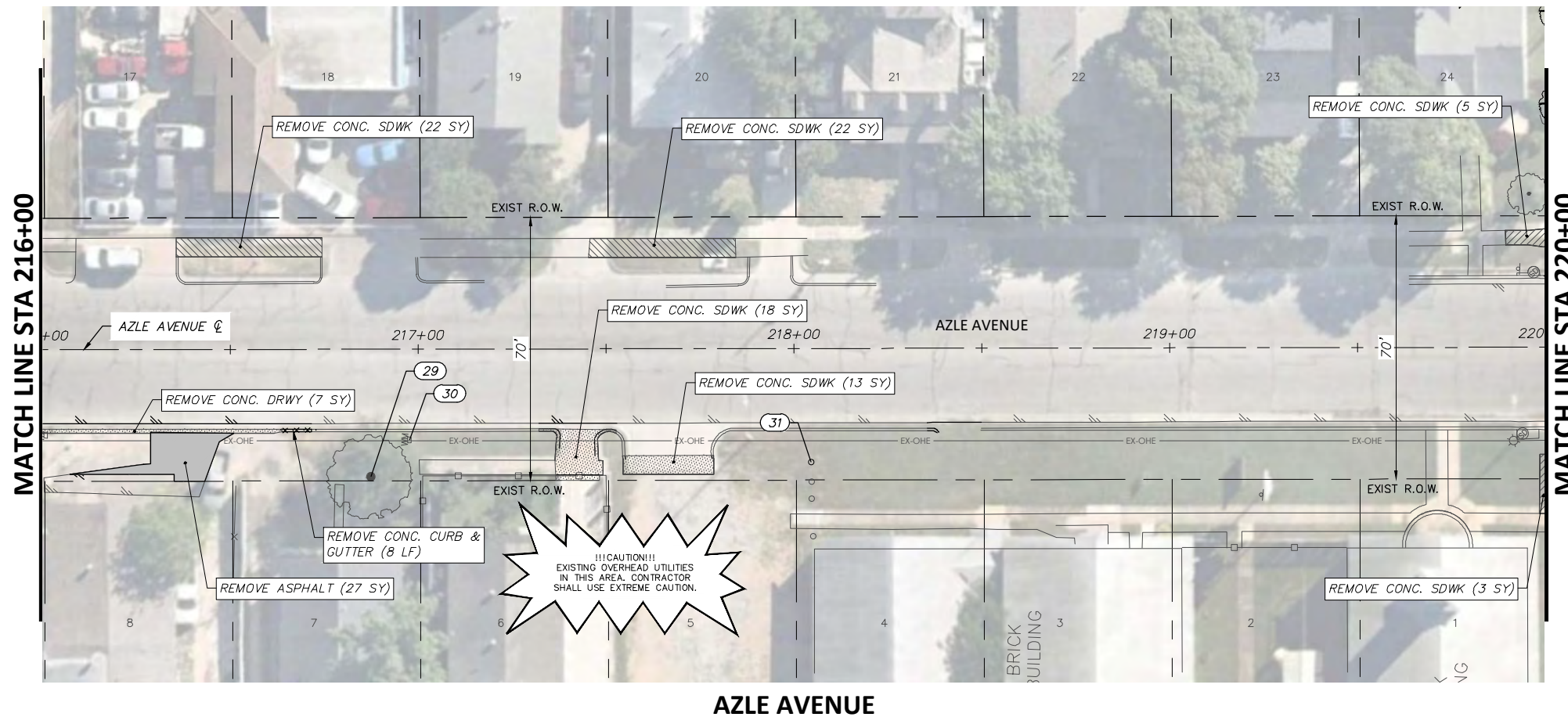
6/14/2021

JOSHUA WRIGHT 125733 LICENSED PROFESSIONAL ENGINEER

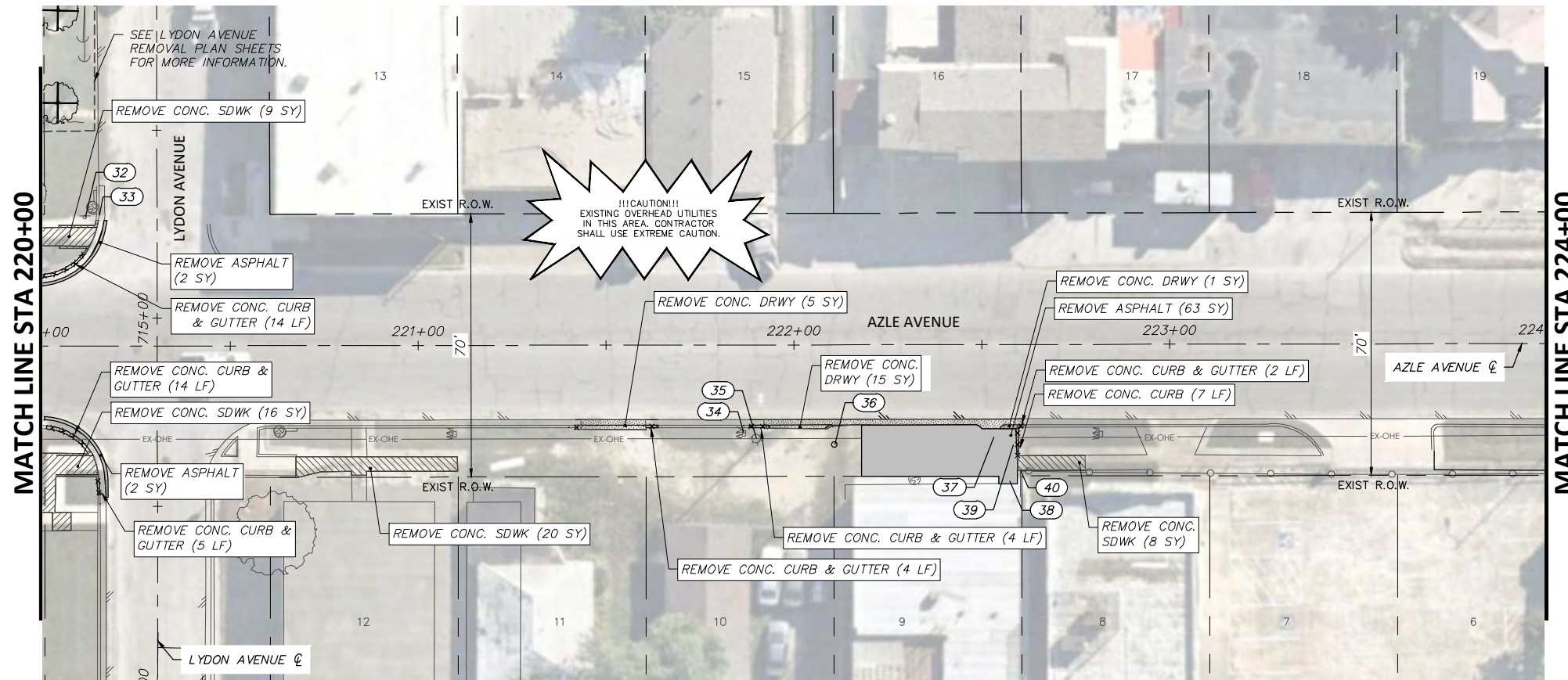
FED. RD. DIV. NO.	STATE	PROJECT NO.	HIGHWAY NO.
6	TEXAS	STP 2021(929)TP	N/A
STATE DISTRICT	COUNTY	CONTROL NO.	SECTION NO.
FTW	TARRANT	0902	90
			JOB NO.
			082
			SHEET NO.
			60

FULL PATH: G:\Production\500\002600\2684\002\Civil\Drawings\Plot Sheets\RMV\PLAN WJT\AZLE AVE

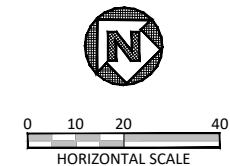
FILENAME: RMV-PL-AZ.dwg
 PLOTTED BY: LEE MONASTESSE
 PLOTTED WITH: _DWG TO PDF.PC3



AZLE AVENUE



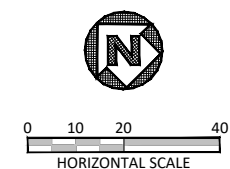
AZLE AVENUE



NOTE:
 RETURN ALL REMOVED SIGNS TO TPW FIELD OPERATIONS SUPERVISOR SIDNEY RUTTER (SIDNEY.RUTTER@FORTWORTHTEXAS.GOV) AT 5001 JAMES AVE, FORT WORTH, TX.
 ITEMS NOT CALLED OUT FOR REMOVAL SHALL BE CLEARED & REMOVED AS REQUIRED AND DIRECTED BY THE ENGINEER. COST TO BE INCLUDED IN PRICE BID FOR SITE CLEARING. EXISTING SITE CONDITIONS MAY VARY FROM THOSE SHOWN ON THESE PLANS.

REMOVAL LEGEND	
	TREES TO BE REMOVED
	REMOVAL ITEMS
	ABANDONEMENT ITEMS
	ASPHALT REMOVAL
	GRAVEL REMOVAL
	CONCRETE REMOVAL
	SIDEWALK/ RAMP REMOVAL
	CONCRETE DRIVE REMOVAL

EXISTING AZLE-AVE OBSTRUCTION CONFLICTS			
NO.	STATION, OFFSET	DESCRIPTION	NOTE
29	216+87.41, 33.96 RT	TREE	PROTECT
30	216+97.71, 24.15 RT	WATER METER	PROTECT (ADJUST TO GRADE)
31	218+04.64, 30.22 RT	BOLLARD	REMOVE
32	220+11.49, 34.30 LT	STOP SIGN	PROTECT
33	220+15.22, 34.76 LT	STORM DRAIN	PROTECT
34	221+86.72, 23.53 RT	WATER METER	PROTECT (ADJUST TO GRADE)
35	221+90.06, 24.98 RT	LIGHT POLE	PROTECT
36	222+10.88, 26.56 RT	BOLLARD	REMOVE
37	222+53.27, 24.52 RT	WATER METER	PROTECT (ADJUST TO GRADE)
38	222+57.42, 36.28 RT	BOLLARD	REMOVE
39	222+58.41, 26.55 RT	BOLLARD	REMOVE
40	222+60.31, 33.70 RT	FENCE	PROTECT



DATE	BY	REV	REVISION

DUNAWAY 550 Bailey Avenue
 Suite 400
 Fort Worth, TX 76107
 (TX REG #1114) 817-335-1121

FORT WORTH

PROJ NO. 101264 FILE NO. K-2630

Texas Department of Transportation
 © 2020

2018 SAFE ROUTES TO SCHOOL IMPROVEMENTS

**AZLE AVENUE
 REMOVALS AND UTILITY ADJUSTMENTS
 STA. 216+00.00 TO STA. 224+00.00
 WJ TURNER ELEMENTARY SCHOOL**

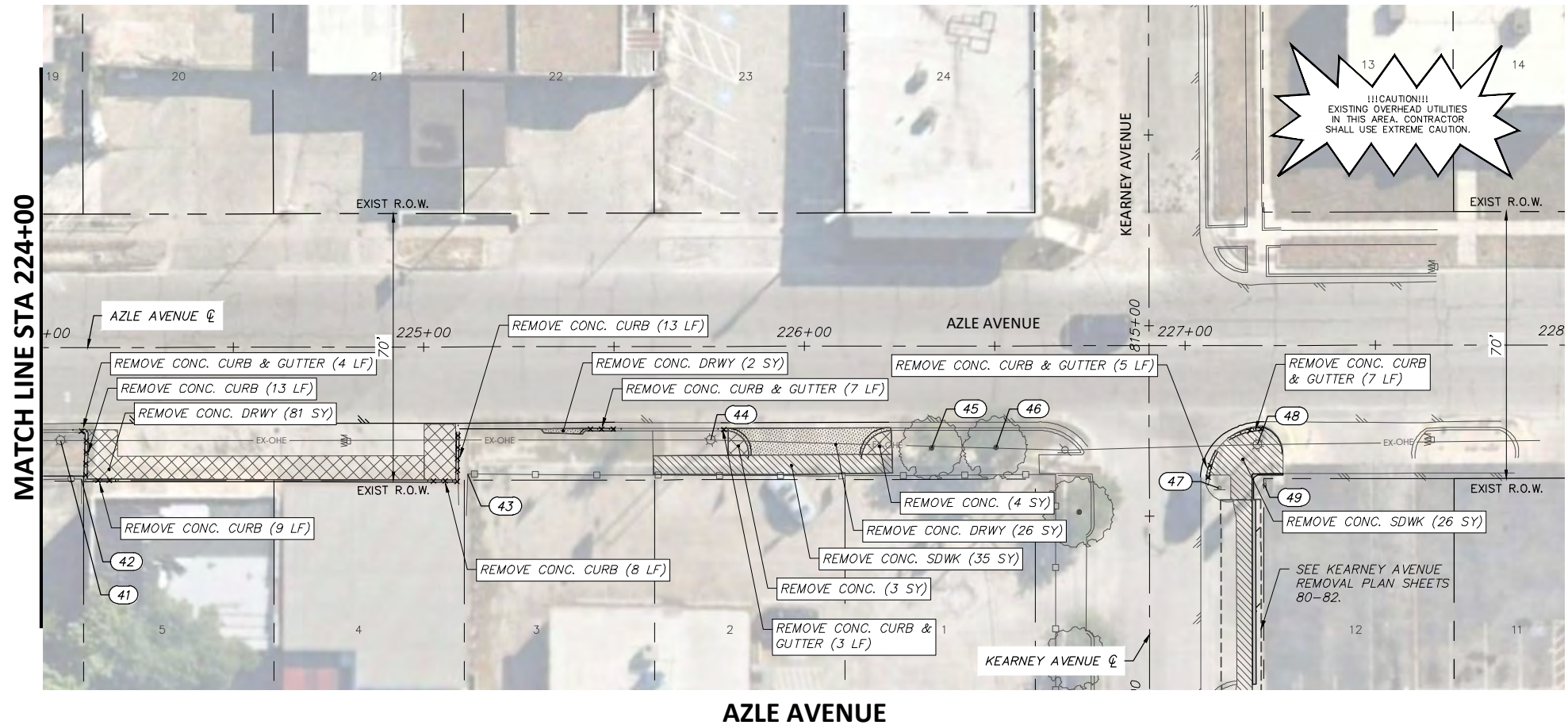
FED. RD. DIV. NO.	STATE	PROJECT NO.	HIGHWAY NO.		
6	TEXAS	STP 2021(929)TP	N/A		
STATE DISTRICT	COUNTY	CONTROL NO.	SECTION NO.	JOB NO.	SHEET NO.
FTW	TARRANT	0902	90	082	61

6/14/2021

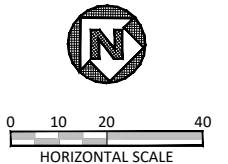
Joshua Wright

FULL PATH: G:\Production\500\002600\2684\002\Civil\Drawings\Plot Sheets\RMV-PLAN WJT\AZLE AVE

FILENAME: RMV-PL-AZ.dwg
 PLOTTED BY: LEE MONASTESSE
 PLOTTED WITH: _DWG TO PDF.PC3



!!!CAUTION!!!
 EXISTING OVERHEAD UTILITIES
 IN THIS AREA. CONTRACTOR
 SHALL USE EXTREME CAUTION.



NOTE:
 RETURN ALL REMOVED SIGNS
 TO TPW FIELD OPERATIONS
 SUPERVISOR SIDNEY RUTTER
 (SIDNEY.RUTTER@
 FORTWORTHTEXAS.GOV) AT
 5001 JAMES AVE, FORT WORTH,
 TX.
 ITEMS NOT CALLED OUT FOR
 REMOVAL SHALL BE CLEARED
 & REMOVED AS REQUIRED AND
 DIRECTED BY THE ENGINEER.
 COST TO BE INCLUDED IN
 PRICE BID FOR SITE CLEARING.
 EXISTING SITE CONDITIONS MAY
 VARY FROM THOSE SHOWN ON
 THESE PLANS.

REMOVAL LEGEND

- TREES TO BE REMOVED
- REMOVAL ITEMS
- ABANDONEMENT ITEMS
- ASPHALT REMOVAL
- GRAVEL REMOVAL
- CONCRETE REMOVAL
- SIDEWALK/ RAMP REMOVAL
- CONCRETE DRIVE REMOVAL

EXISTING AZLE-AVE OBSTRUCTION CONFLICTS

NO.	☉ STATION, OFFSET	DESCRIPTION	NOTE
41	224+04.69, 24.41 RT	LIGHT POLE	PROTECT
42	224+10.11, 34.55 RT	FENCE	PROTECT
43	225+11.59, 33.43 RT	FENCE	PROTECT
44	225+75.46, 24.56 RT	LIGHT POLE	PROTECT
45	226+33.49, 26.74 RT	TREE	PROTECT
46	226+50.38, 26.68 RT	TREE	PROTECT
47	227+09.04, 37.43 RT	STOP SIGN	PROTECT
48	227+19.03, 26.05 RT	LIGHT POLE	PROTECT
49	227+20.88, 36.61 RT	PRIVATE BUSINESS SIGN	PROTECT

DATE	BY	REV	REVISION

DUNAWAY (TX REG #1114) 550 Bailey Avenue
 Suite 400
 Fort Worth, TX 76107
 817-335-1121

FORT WORTH

PROJ NO. 101264 FILE NO. K-2630

Texas Department of Transportation
 © 2020

2018 SAFE ROUTES TO SCHOOL IMPROVEMENTS

**AZLE AVENUE
 REMOVALS AND UTILITY ADJUSTMENTS
 STA. 224+00.00 TO STA. 228+00.00
 WJ TURNER ELEMENTARY SCHOOL**

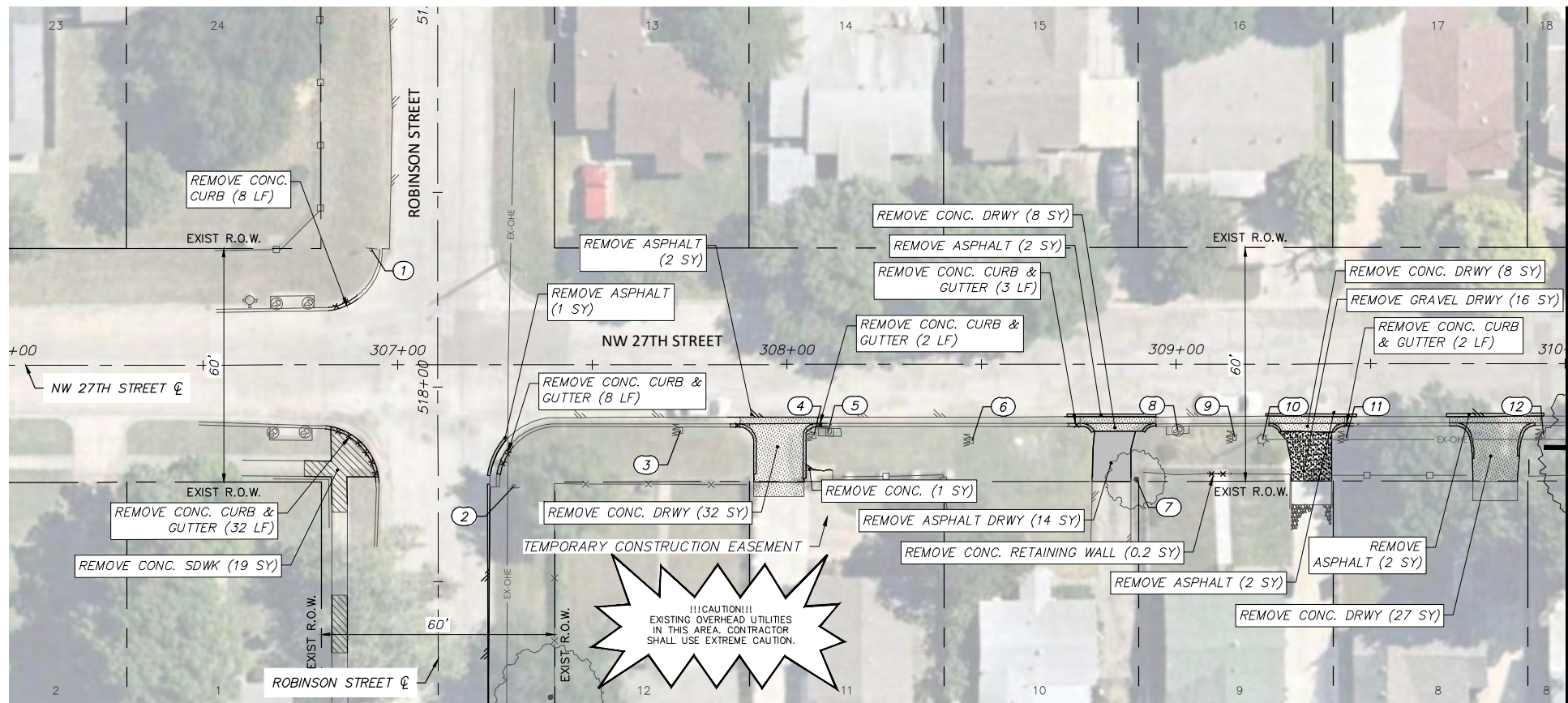
FED. RD. DIV. NO.	STATE	PROJECT NO.	HIGHWAY NO.		
6	TEXAS	STP 2021(929)TP	N/A		
STATE DISTRICT	COUNTY	CONTROL NO.	SECTION NO.	JOB NO.	SHEET NO.
FTW	TARRANT	0902	90	082	62

6/14/2021

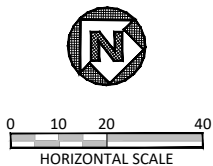
Joshua Wright

FULL PATH: G:\Production\500\002600\2684\002\Civil\Drawings\Plot Sheets\RMVL-PLAN WJT\27TH ST

FILENAME: RMVL-PL-27.dwg
 PLOTTED BY: LEE MONASTESSE
 PLOTTED WITH: _DWG TO PDF.PC3



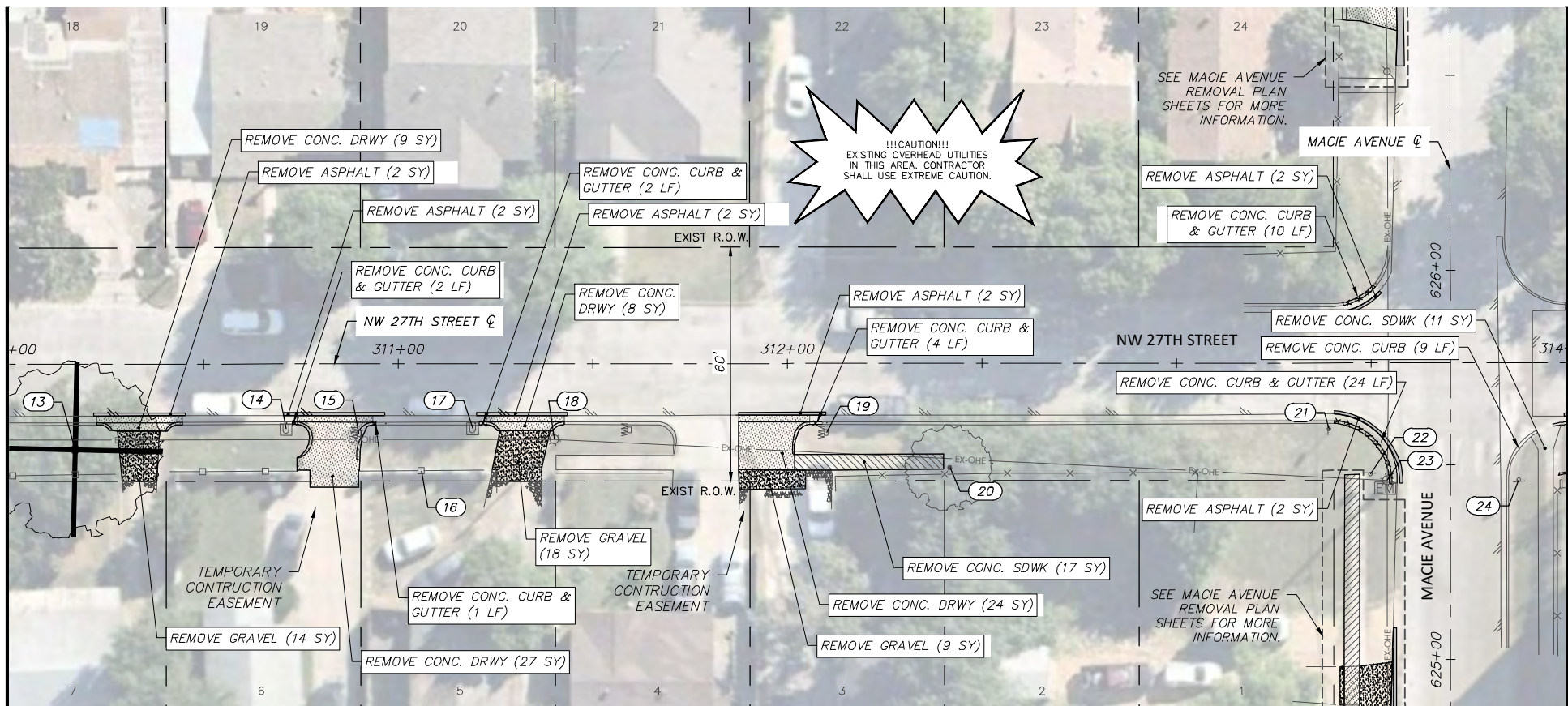
NW 27TH STREET



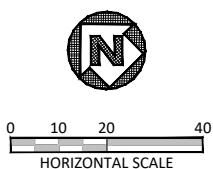
NOTE:
 RETURN ALL REMOVED SIGNS TO TPW FIELD OPERATIONS SUPERVISOR SIDNEY RUTTER (SIDNEY.RUTTER@FORTWORTHTEXAS.GOV) AT 5001 JAMES AVE, FORT WORTH, TX.
 ITEMS NOT CALLED OUT FOR REMOVAL SHALL BE CLEARED & REMOVED AS REQUIRED AND DIRECTED BY THE ENGINEER. COST TO BE INCLUDED IN PRICE BID FOR SITE CLEARING. EXISTING SITE CONDITIONS MAY VARY FROM THOSE SHOWN ON THESE PLANS.

REMOVAL LEGEND	
	TREES TO BE REMOVED
	REMOVAL ITEMS
	ABANDONEMENT ITEMS
	ASPHALT REMOVAL
	GRAVEL REMOVAL
	CONCRETE REMOVAL
	SIDEWALK/ RAMP REMOVAL
	CONCRETE DRIVE REMOVAL

EXISTING NW-27TH-ST OBSTRUCTION CONFLICTS			
NO.	STATION, OFFSET	DESCRIPTION	NOTE
1	306+93.26, 29.51 LT	STOP SIGN	PROTECT
2	307+29.81, 31.22 RT	STOP SIGN	PROTECT
3	307+72.66, 16.89 RT	WATER METER	PROTECT (ADJUST TO GRADE)
4	308+06.91, 18.39 RT	WATER METER	PROTECT (ADJUST TO GRADE)
5	308+10.61, 17.27 RT	MAIL BOX	PROTECT
6	308+47.48, 19.66 RT	WATER METER	PROTECT (ADJUST TO GRADE)
7	308+89.78, 29.62 RT	TREE	PROTECT
8	309+00.47, 17.07 RT	STORM DRAIN	PROTECT
9	309+15.02, 18.88 RT	WATER METER	PROTECT (ADJUST TO GRADE)
10	309+22.13, 19.39 RT	LIGHT POLE	PROTECT
11	309+43.61, 18.96 RT	WATER METER	PROTECT (ADJUST TO GRADE)
12	309+94.39, 18.36 RT	WATER METER	PROTECT (ADJUST TO GRADE)
13	310+16.95, 21.98 RT	TREE	REMOVE (36" CALIPER)
14	310+71.16, 16.75 RT	MAIL BOX	PROTECT
15	310+89.92, 17.90 RT	WATER METER	PROTECT (ADJUST TO GRADE)
16	311+05.86, 27.43 RT	FENCE	PROTECT
17	311+19.17, 16.74 RT	MAIL BOX	PROTECT
18	311+40.04, 19.45 RT	LIGHT POLE	PROTECT
19	312+09.97, 17.78 RT	WATER METER	PROTECT (ADJUST TO GRADE)
20	312+41.71, 26.82 RT	TREE	PROTECT
21	313+39.16, 17.04 RT	STOP SIGN	PROTECT
22	313+49.72, 28.61 RT	CROSS WALK SIGN	PROTECT
23	313+53.98, 30.13 RT	LIGHT POLE W/ METER	PROTECT
24	313+87.84, 30.10 RT	STOP SIGN	PROTECT



NW 27TH STREET



DATE	BY	REV	REVISION

DUNAWAY 550 Bailey Avenue
 Suite 400
 Fort Worth, TX 76107
 817-335-1121
 (TX REG F-1114)

FORT WORTH
 PROJ NO. 101264 FILE NO. K-2630
 Texas Department of Transportation
 © 2020

2018 SAFE ROUTES TO SCHOOL IMPROVEMENTS

**NW 27TH STREET
 REMOVALS AND UTILITY ADJUSTMENTS
 STA. 306+00.00 TO STA. 314+00.00
 WJ TURNER ELEMENTARY SCHOOL**

6/14/2021

STATE OF TEXAS
 JOSHUA WRIGHT
 125733
 LICENSED PROFESSIONAL ENGINEER

FED. RD. DIV. NO.	STATE	PROJECT NO.	HIGHWAY NO.		
6	TEXAS	STP 2021(929)TP	N/A		
STATE DISTRICT	COUNTY	CONTROL NO.	SECTION NO.	JOB NO.	SHEET NO.
FTW	TARRANT	0902	90	082	63

FULL PATH: G:\Production\500\002600\2684\002\Civil\Drawings\Plot Sheets\RMV-PLAN WJT\27TH ST

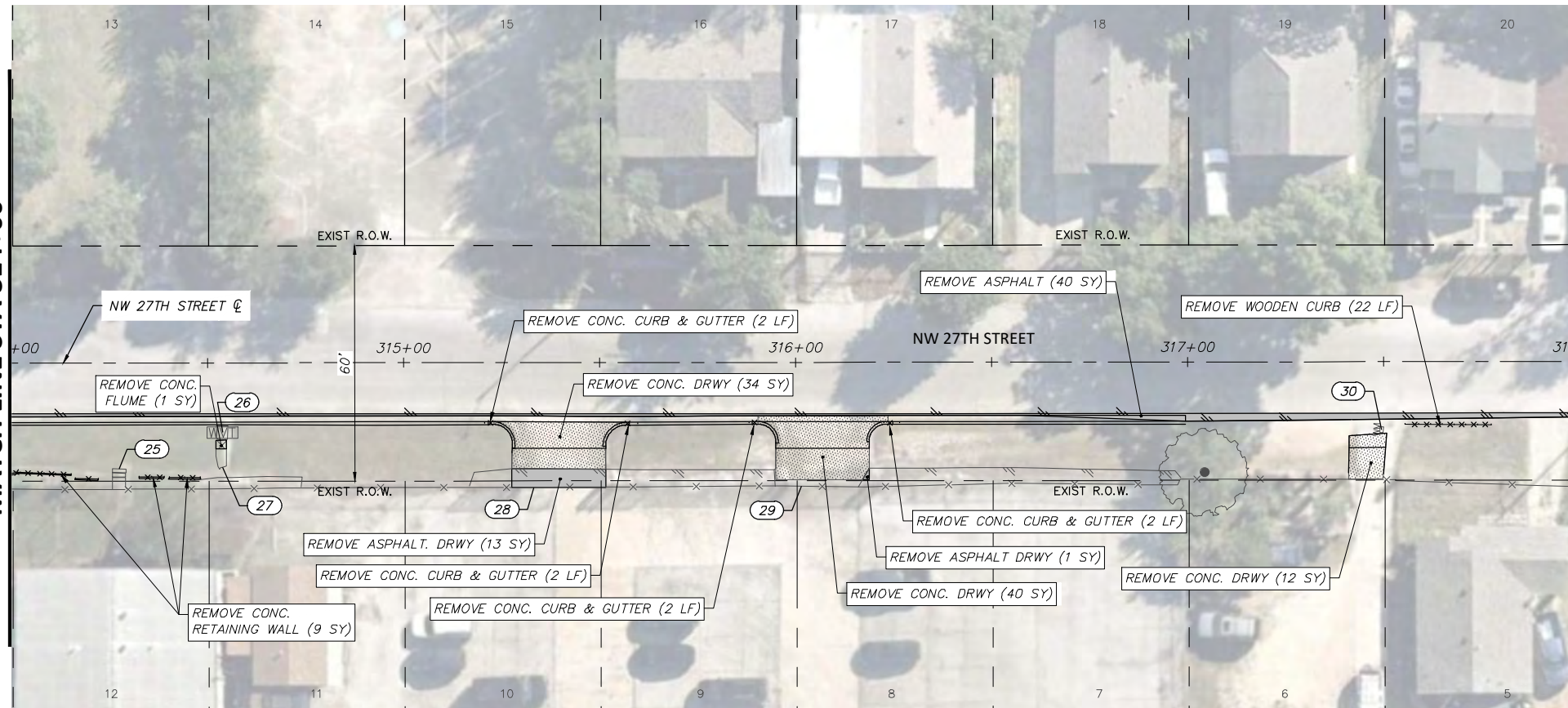
FILENAME: RMV-PL-27.dwg
 PLOTTED BY: LEE MONASTESSE
 PLOTTED WITH: _DWG TO PDF.PC3

MATCH LINE STA 314+00

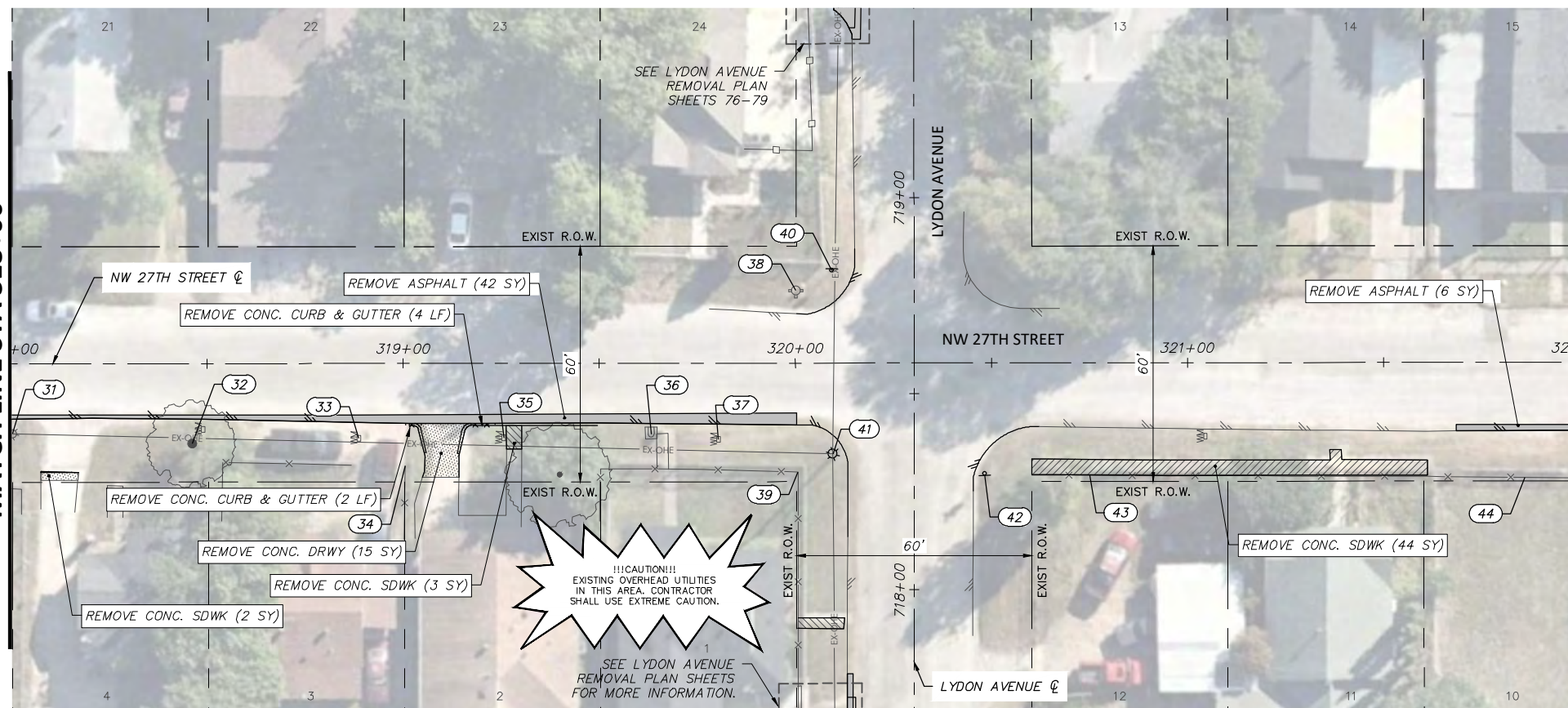
MATCH LINE STA 318+00

MATCH LINE STA 318+00

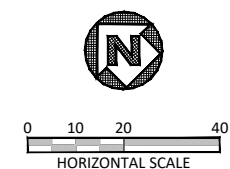
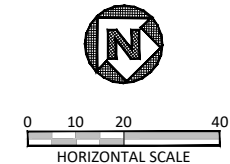
MATCH LINE STA 322+00



NW 27TH STREET



NW 27TH STREET



NOTE:
 RETURN ALL REMOVED SIGNS TO TPW FIELD OPERATIONS SUPERVISOR SIDNEY RUTTER (SIDNEY.RUTTER@FORTWORTHTEXAS.GOV) AT 5001 JAMES AVE, FORT WORTH, TX.
 ITEMS NOT CALLED OUT FOR REMOVAL SHALL BE CLEARED & REMOVED AS REQUIRED AND DIRECTED BY THE ENGINEER. COST TO BE INCLUDED IN PRICE BID FOR SITE CLEARING. EXISTING SITE CONDITIONS MAY VARY FROM THOSE SHOWN ON THESE PLANS.

REMOVAL LEGEND	
	TREES TO BE REMOVED
	REMOVAL ITEMS
	ABANDONEMENT ITEMS
	ASPHALT REMOVAL
	GRAVEL REMOVAL
	CONCRETE REMOVAL
	SIDEWALK/ RAMP REMOVAL
	CONCRETE DRIVE REMOVAL

EXISTING NW-27TH-ST OBSTRUCTION CONFLICTS			
NO.	℄ STATION, OFFSET	DESCRIPTION	NOTE
25	314+27.39, 26.99 RT	CONC. STEPS	PROTECT
26	314+53.74, 17.78 RT	WATER METER VAULT	PROTECT (ADJUST TO GRADE)
27	314+53.78, 26.60 RT	DRAIN PIPE	PROTECT
28	315+33.16, 31.80 RT	GATE	PROTECT
29	316+01.42, 31.54 RT	GATE	PROTECT
30	317+49.40, 17.36 RT	WATER METER	PROTECT
31	318+00.29, 17.84 RT	LIGHT POLE	PROTECT
32	318+46.22, 20.42 RT	TREE	PROTECT
33	318+88.68, 19.05 RT	WATER METER	PROTECT (ADJUST TO GRADE)
34	319+00.52, 26.14 RT	FENCE	PROTECT
35	319+25.69, 19.03 RT	WATER METER	PROTECT (ADJUST TO GRADE)
36	319+63.25, 18.09 RT	MAIL BOX	PROTECT
37	319+80.34, 19.44 RT	WATER METER	PROTECT (ADJUST TO GRADE)
38	320+00.17, 18.45 LT	FIRE HYDRANT	PROTECT (ADJUST TO GRADE)
39	320+00.64, 27.81 RT	FENCE	PROTECT
41	320+09.57, 23.18 RT	LIGHT POLE	RELOCATE LIGHT POLE (BY OTHERS)
42	320+48.25, 28.65 RT	STOP SIGN	PROTECT
43	320+75.04, 28.71 RT	FENCE	PROTECT
44	321+86.03, 29.35 RT	CHAIN LINK FENCE	PROTECT

DATE	BY	REV	REVISION

DUNAWAY 550 Bailey Avenue
 Suite 400
 Fort Worth, TX 76107
 (TX REG #1114) 817-335-1121

FORT WORTH

PROJ NO. 101264 FILE NO. K-2630

Texas Department of Transportation
 © 2020

2018 SAFE ROUTES TO SCHOOL IMPROVEMENTS

**NW 27TH STREET
 REMOVALS AND UTILITY ADJUSTMENTS
 STA. 314+00.00 TO STA. 322+00.00
 WJ TURNER ELEMENTARY SCHOOL**

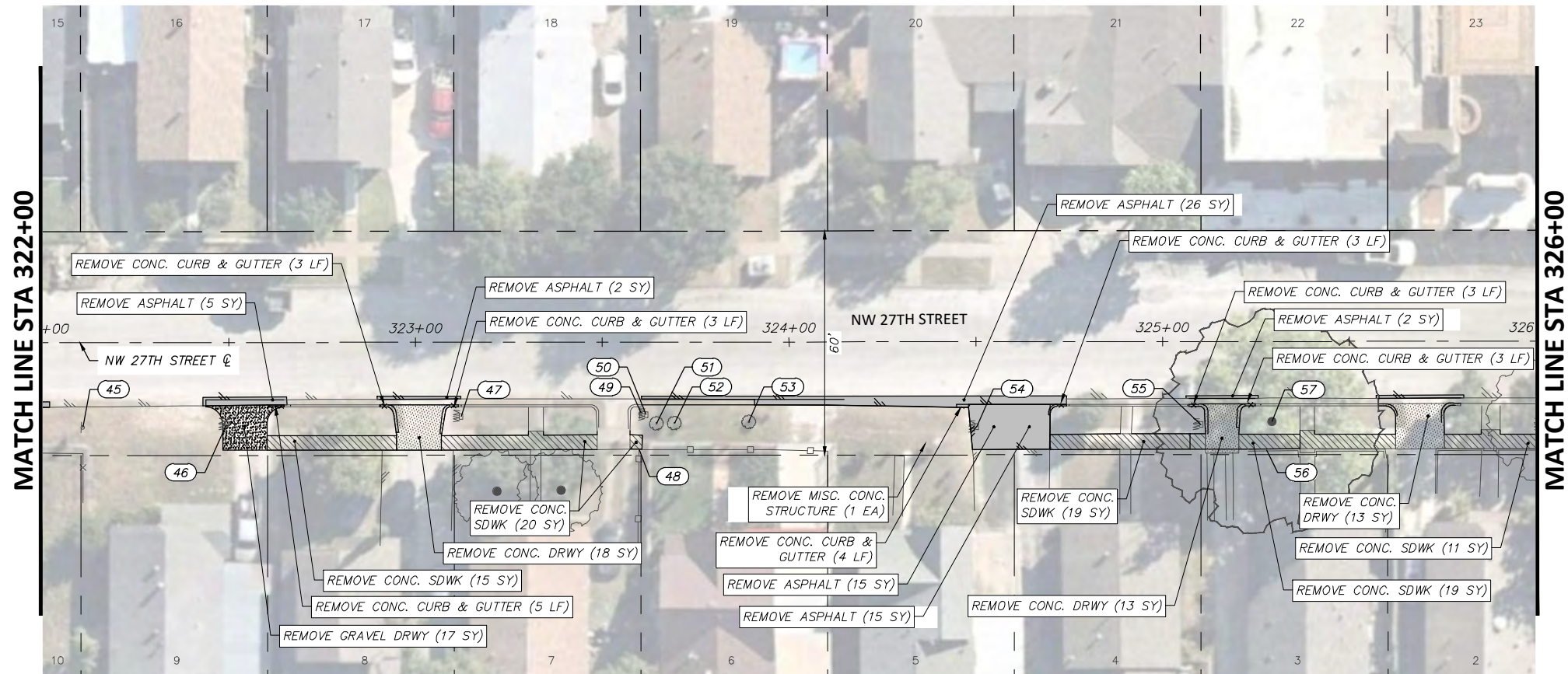
FED. RD. DIV. NO.	STATE	PROJECT NO.	HIGHWAY NO.		
6	TEXAS	STP 2021(929)TP	N/A		
STATE DISTRICT	COUNTY	CONTROL NO.	SECTION NO.	JOB NO.	SHEET NO.
FTW	TARRANT	0902	90	082	64

6/14/2021

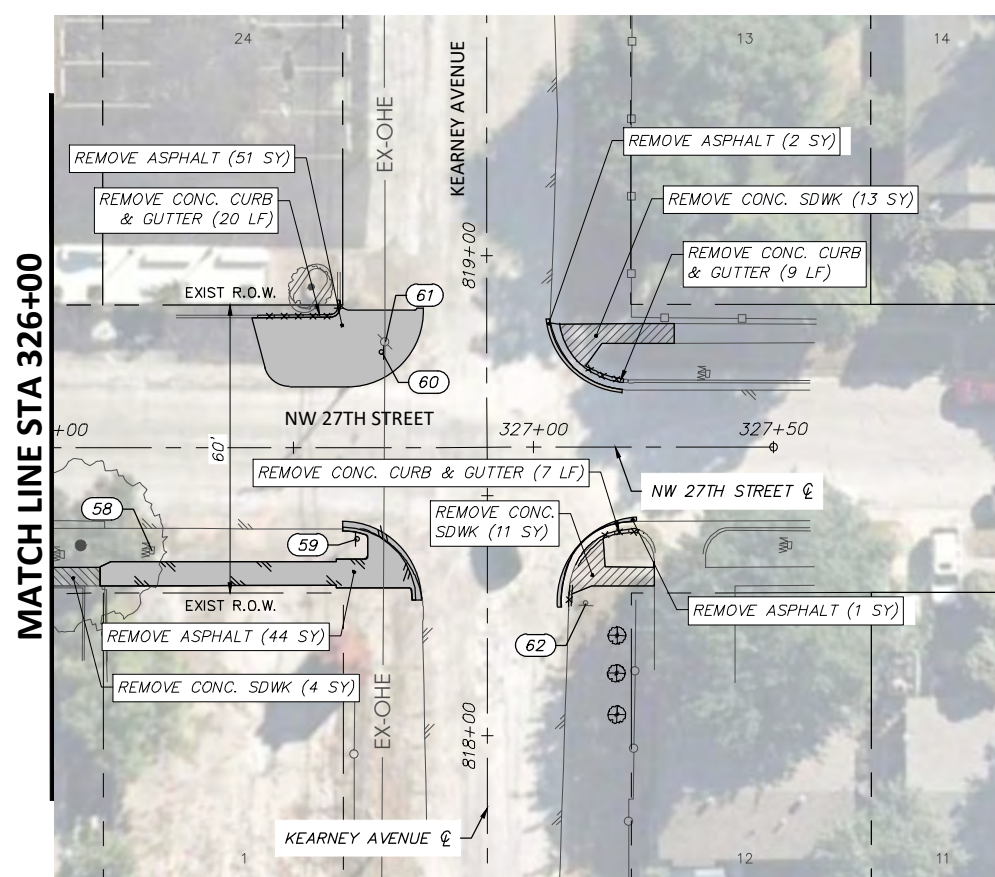
Joshua Wright

FULL PATH: G:\Production\500\002600\2684\002\Civil\Drawings\Plot Sheets\RMV-PLAN WJT\27TH ST

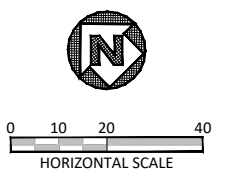
FILENAME: RMV-PL-27.dwg
 PLOTTED BY: LEE MONASTESSE
 PLOTTED WITH: _DWG TO PDF.PC3



NW 27TH STREET



NW 27TH STREET



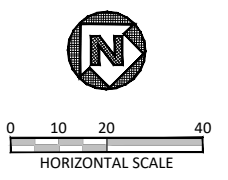
NOTE:
 RETURN ALL REMOVED SIGNS TO TPW FIELD OPERATIONS SUPERVISOR SIDNEY RUTTER (SIDNEY.RUTTER@FORTWORTHTEXAS.GOV) AT 5001 JAMES AVE, FORT WORTH, TX.
 ITEMS NOT CALLED OUT FOR REMOVAL SHALL BE CLEARED & REMOVED AS REQUIRED AND DIRECTED BY THE ENGINEER. COST TO BE INCLUDED IN PRICE BID FOR SITE CLEARING. EXISTING SITE CONDITIONS MAY VARY FROM THOSE SHOWN ON THESE PLANS.

REMOVAL LEGEND

- TREES TO BE REMOVED
- REMOVAL ITEMS
- ABANDONEMENT ITEMS
- ASPHALT REMOVAL
- GRAVEL REMOVAL
- CONCRETE REMOVAL
- SIDEWALK/ RAMP REMOVAL
- CONCRETE DRIVE REMOVAL

EXISTING NW-27TH-ST OBSTRUCTION CONFLICTS

NO.	C/L STATION, OFFSET	DESCRIPTION	NOTE
45	322+10.82, 22.72 RT	CROSS WALK AHEAD SIGN	REMOVE & RESET
46	322+49.37, 21.96 RT	WATER METER	RELOCATE OUTSIDE DRIVEWAY
47	323+12.16, 19.90 RT	WATER METER	PROTECT (ADJUST TO GRADE)
48	323+59.82, 28.83 RT	FENCE	PROTECT
49	323+60.37, 19.05 RT	ADVISORY SIGN	PROTECT
50	323+61.74, 19.47 RT	WATER METER	PROTECT (ADJUST TO GRADE)
51	323+64.50, 21.74 RT	TREE	PROTECT
52	323+69.29, 21.69 RT	TREE	PROTECT
53	323+89.23, 21.39 RT	TREE	PROTECT
54	324+50.22, 22.76 RT	WATER METER	PROTECT (ADJUST TO GRADE)
55	325+10.37, 22.30 RT	WATER METER	PROTECT (ADJUST TO GRADE)
56	325+27.85, 29.02 RT	ROCK WALL	PROTECT
57	325+29.32, 21.43 RT	TREE	PROTECT
58	326+20.56, 21.52 RT	WATER METER	PROTECT (ADJUST TO GRADE)
59	326+63.26, 19.13 RT	STOP SIGN	REMOVE & RESET
60	326+68.41, 19.78 LT	PED CROSSING SIGN	PROTECT
61	326+69.12, 21.94 LT	POWER POLE	PROTECT
62	327+10.88, 32.49 RT	STOP SIGN	PROTECT



6/14/2021

 Joshua Wright

DATE	BY	REV	REVISION

DUNAWAY 550 Bailey Avenue
 Suite 400
 Fort Worth, TX 76107
 (TX REG. F-1114) 817-335-1121

FORT WORTH

PROJ NO. 101264 FILE NO. K-2630

Texas Department of Transportation
 © 2020

2018 SAFE ROUTES TO SCHOOL IMPROVEMENTS

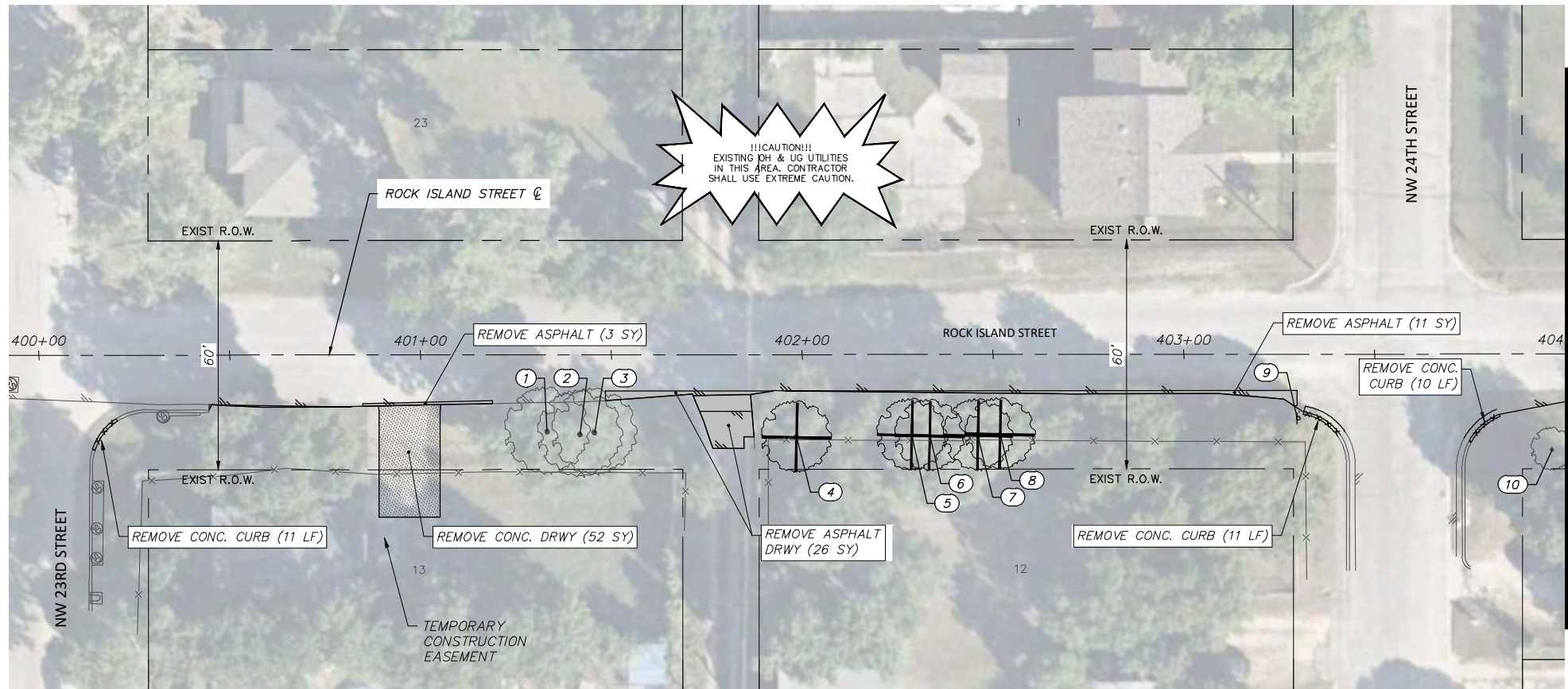
**NW 27TH STREET
 REMOVALS AND UTILITY ADJUSTMENTS
 STA. 322+00.00 TO STA. 327+50.00
 WJ TURNER ELEMENTARY SCHOOL**

FED. RD. DIV. NO.	STATE	PROJECT NO.	HIGHWAY NO.
6	TEXAS	STP 2021(929)TP	N/A

STATE DISTRICT	COUNTY	CONTROL NO.	SECTION NO.	JOB NO.	SHEET NO.
FTW	TARRANT	0902	90	082	65

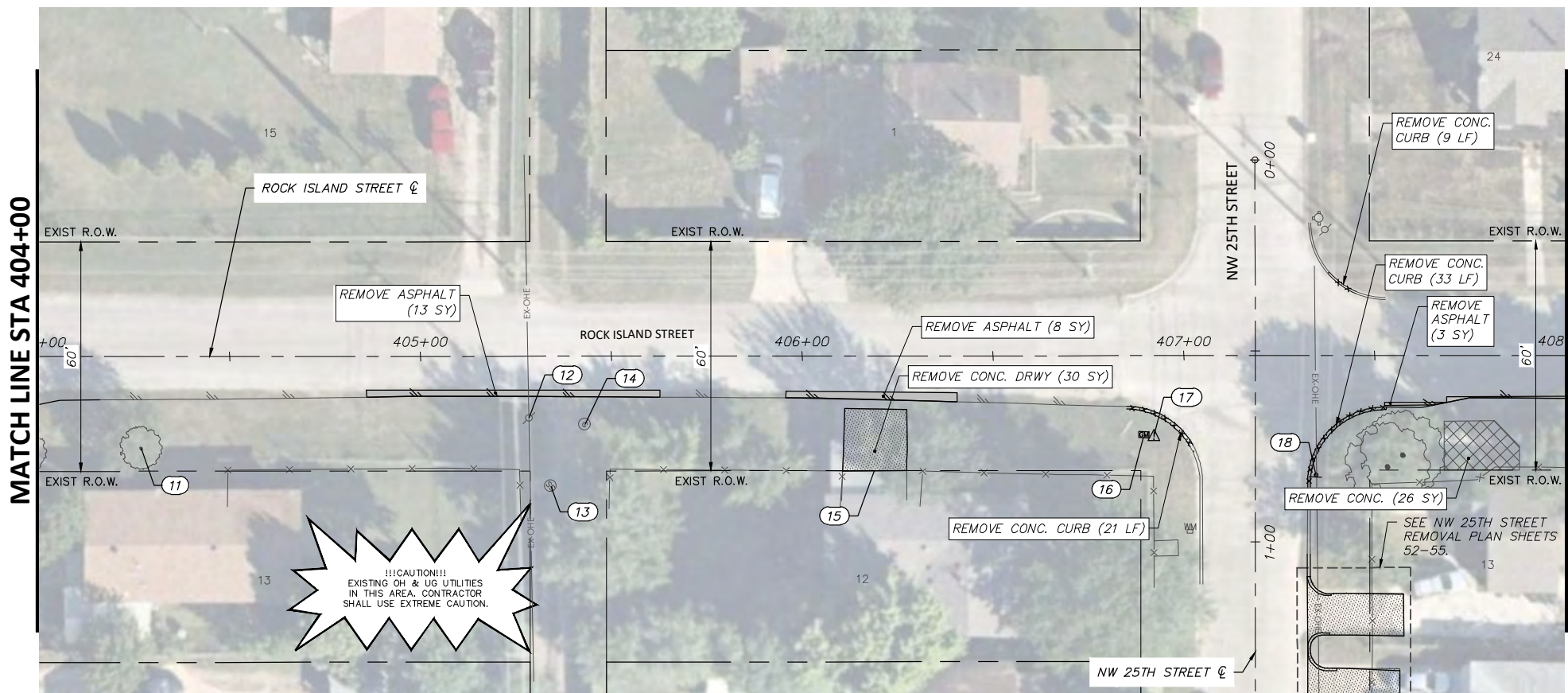
FULL PATH: G:\Production\500\002600\2684\002\Civil\Drawings\Plot Sheets\RMV-PLAN WJT\ROCK ISLAND ST

FILENAME: RMV-PL-RI.dwg
PLOTTED BY: LEE MONASTESSE
PLOTTED WITH: _DWG TO PDF.PC3



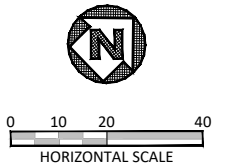
ROCK ISLAND STREET

MATCH LINE STA 404+00



ROCK ISLAND STREET

MATCH LINE STA 408+00

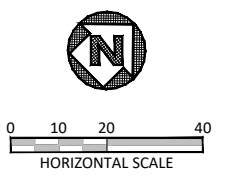


NOTE:
RETURN ALL REMOVED SIGNS TO TPW FIELD OPERATIONS SUPERVISOR SIDNEY RUTTER (SIDNEY.RUTTER@FORTWORTHTEXAS.GOV) AT 5001 JAMES AVE, FORT WORTH, TX.

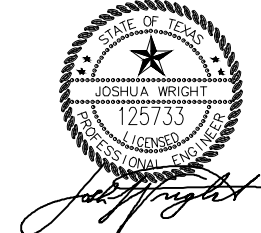
ITEMS NOT CALLED OUT FOR REMOVAL SHALL BE CLEARED & REMOVED AS REQUIRED AND DIRECTED BY THE ENGINEER. COST TO BE INCLUDED IN PRICE BID FOR SITE CLEARING. EXISTING SITE CONDITIONS MAY VARY FROM THOSE SHOWN ON THESE PLANS.

REMOVAL LEGEND	
	TREES TO BE REMOVED
	REMOVAL ITEMS
	ABANDONEMENT ITEMS
	ASPHALT REMOVAL
	GRAVEL REMOVAL
	CONCRETE REMOVAL
	SIDEWALK/ RAMP REMOVAL
	CONCRETE DRIVE REMOVAL

EXISTING ROCK ISLAND ST OBSTRUCTION CONFLICTS			
NO.	STATION, OFFSET	DESCRIPTION	NOTE
1	401+33.20, 20.16 RT	TREE	PROTECT
2	401+41.79, 20.93 RT	TREE	PROTECT
3	401+45.56, 20.43 RT	TREE	PROTECT
4	401+98.49, 21.70 RT	TREE	REMOVE (CLUSTER)
5	402+28.70, 21.16 RT	TREE	REMOVE (CLUSTER)
6	402+33.42, 21.33 RT	TREE	REMOVE (CLUSTER)
7	402+46.07, 21.25 RT	TREE	REMOVE (CLUSTER)
8	402+51.85, 20.97 RT	TREE	REMOVE (CLUSTER)
9	403+29.66, 16.84 RT	STOP SIGN	REMOVE & RESET
10	403+96.47, 25.00 RT	TREE	PROTECT
11	404+26.79, 24.06 RT	TREE	PROTECT
12	405+28.40, 16.18 RT	OHE POLE	PROTECT
13	405+34.04, 33.98 RT	SSMH	PROTECT
14	405+43.04, 17.86 RT	GAS MH	PROTECT, ADJUST TO GRADE
15	406+18.87, 30.03 RT	FENCE/GATE	PROTECT
16	406+89.46, 21.24 RT	GAS TEST PORT	RELOCATE (BY OTHERS)
17	406+92.18, 20.96 RT	GAS WARNING SIGN	REMOVE & RESET (BY OTHERS)
18	407+34.68, 31.36 RT	STOP SIGN	PROTECT



6/14/2021



DATE	BY	REV	REVISION

DUNAWAY 550 Bailey Avenue
Suite 400
Fort Worth, TX 76107
817-335-1121
(TX REG. F-1114)

FORT WORTH

PROJ NO. 101264 FILE NO. K-2630

Texas Department of Transportation
© 2020

2018 SAFE ROUTES TO SCHOOL IMPROVEMENTS

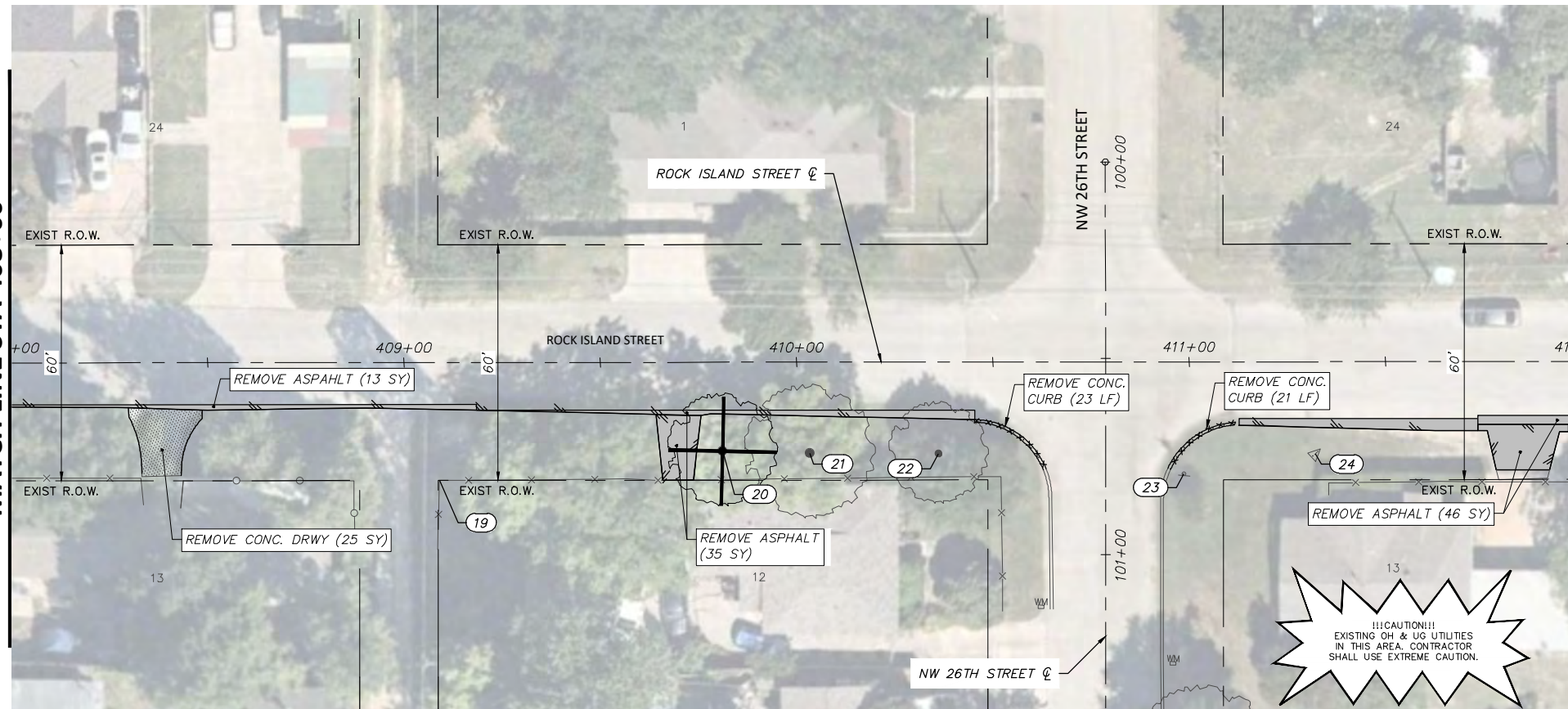
**ROCK ISLAND STREET
REMOVALS AND UTILITY ADJUSTMENTS
STA. 400+00.00 TO STA. 408+00.00
WJ TURNER ELEMENTARY SCHOOL**

FED. RD. DIV. NO.	STATE	PROJECT NO.	HIGHWAY NO.		
6	TEXAS	STP 2021(929)TP	N/A		
STATE DISTRICT	COUNTY	CONTROL NO.	SECTION NO.	JOB NO.	SHEET NO.
FTW	TARRANT	0902	90	082	66

FULL PATH: G:\Production\500\002600\2684\002\Civil\Drawings\Plot Sheets\RMVL-PLAN-WJT\ROCK ISLAND ST

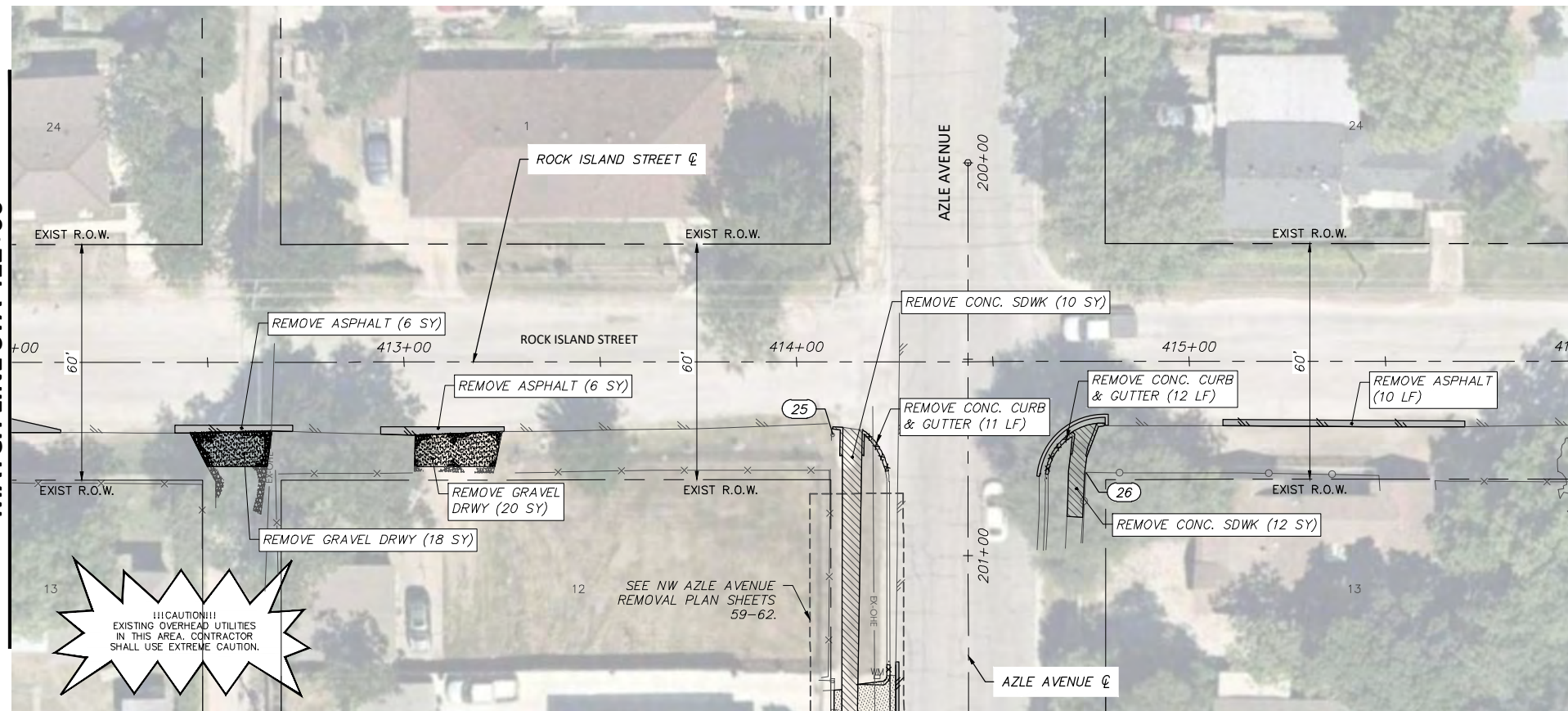
FILENAME: RMVL-PL-RI.dwg
 PLOTTED BY: LEE MONASTESSE
 PLOTTED WITH: _DWG TO PDF.PC3

MATCH LINE STA 408+00

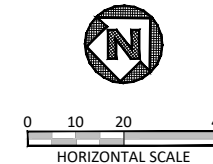


ROCK ISLAND STREET

MATCH LINE STA 412+00



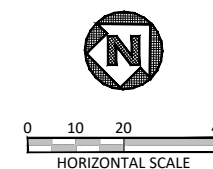
ROCK ISLAND STREET



NOTE:
 RETURN ALL REMOVED SIGNS TO TPW FIELD OPERATIONS SUPERVISOR SIDNEY RUTTER (SIDNEY.RUTTER@FORTWORTHTEXAS.GOV) AT 5001 JAMES AVE, FORT WORTH, TX.
 ITEMS NOT CALLED OUT FOR REMOVAL SHALL BE CLEARED & REMOVED AS REQUIRED AND DIRECTED BY THE ENGINEER. COST TO BE INCLUDED IN PRICE BID FOR SITE CLEARING. EXISTING SITE CONDITIONS MAY VARY FROM THOSE SHOWN ON THESE PLANS.

REMOVAL LEGEND	
	TREES TO BE REMOVED
	REMOVAL ITEMS
	ABANDONEMENT ITEMS
	ASPHALT REMOVAL
	GRAVEL REMOVAL
	CONCRETE REMOVAL
	SIDEWALK/ RAMP REMOVAL
	CONCRETE DRIVE REMOVAL

EXISTING ROCK ISLAND ST OBSTRUCTION CONFLICTS			
NO.	STATION, OFFSET	DESCRIPTION	NOTE
19	409+08.99, 29.97 RT	GAS TEST	PROTECT
20	409+81.13, 22.63 RT	TREE	REMOVE (6" CALIPER)
21	410+03.33, 23.18 RT	TREE	PROTECT
22	410+36.14, 23.34 RT	TREE	PROTECT
23	410+98.72, 28.53 RT	STOP SIGN	PROTECT
24	411+32.09, 23.41 RT	GAS WARNING SIGN	REMOVE & RESET (BY OTHERS)
25	414+09.29, 18.63 RT	STOP SIGN	PROTECT
26	414+73.67, 28.20 RT	FENCE	PROTECT



6/14/2021

 Joshua Wright

DATE	BY	REV	REVISION

DUNAWAY 550 Bailey Avenue
 Suite 400
 Fort Worth, TX 76107
 (TX REG #1114) 817-335-1121

FORT WORTH

PROJ NO. 101264 FILE NO. K-2630

Texas Department of Transportation
 © 2020

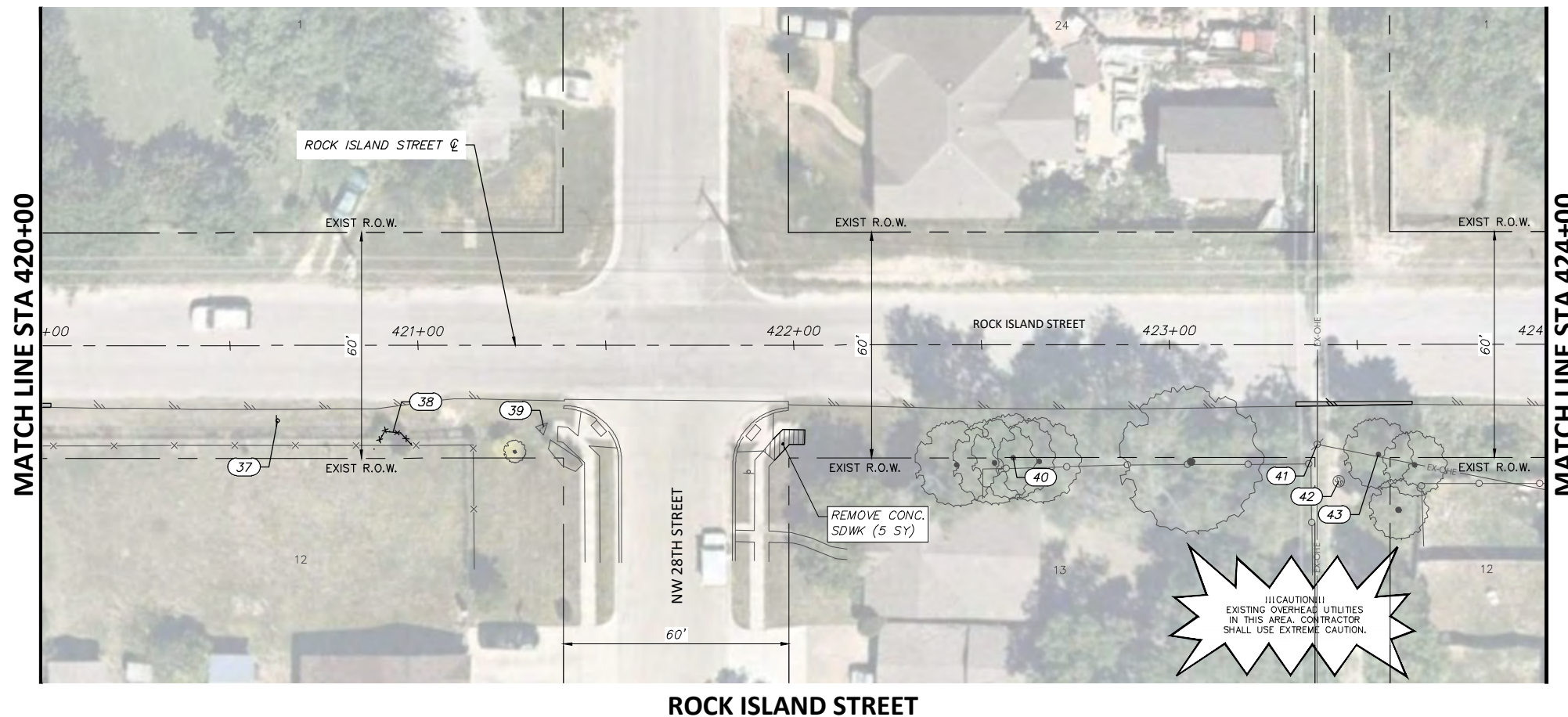
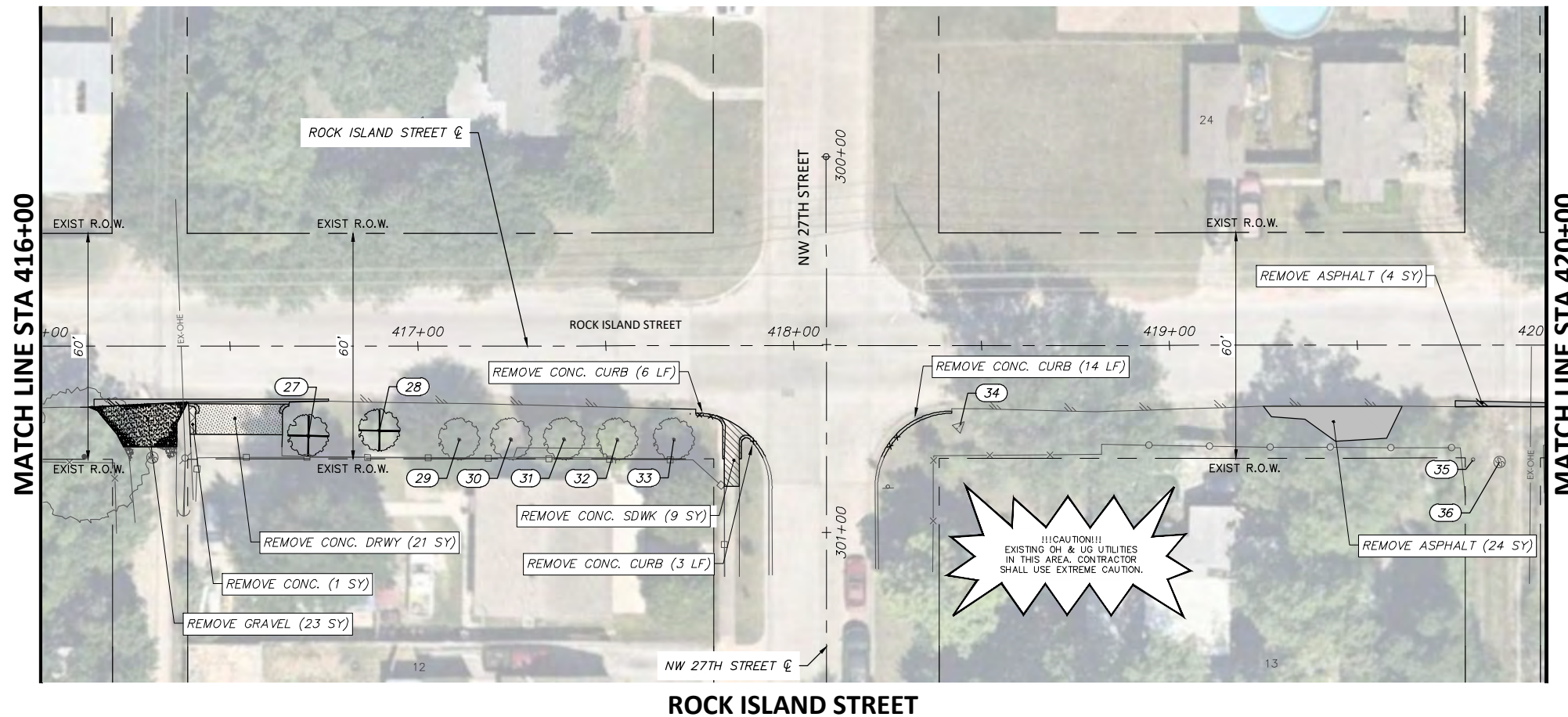
2018 SAFE ROUTES TO SCHOOL IMPROVEMENTS

**ROCK ISLAND STREET
 REMOVALS AND UTILITY ADJUSTMENTS
 STA. 408+00.00 TO STA. 416+00.00
 WJ TURNER ELEMENTARY SCHOOL**

FED. RD. DIV. NO.	STATE	PROJECT NO.	HIGHWAY NO.		
6	TEXAS	STP 2021(929)TP	N/A		
STATE DISTRICT	COUNTY	CONTROL NO.	SECTION NO.	JOB NO.	SHEET NO.
FTW	TARRANT	0902	90	082	67

FULL PATH: G:\Production\500\002600\2684\002\Civil\Drawings\Plot Sheets\RMV-PLAN WJT\ROCK ISLAND ST

FILENAME: RMV-PL-RI.dwg
PLOTTED BY: LEE MONASTESSE
PLOTTED WITH: _DWG TO PDF.PC3



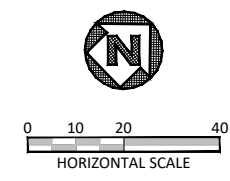
NOTE:

RETURN ALL REMOVED SIGNS TO TPW FIELD OPERATIONS SUPERVISOR SIDNEY RUTTER (SIDNEY.RUTTER@FORTWORTHTEXAS.GOV) AT 5001 JAMES AVE, FORT WORTH, TX.

ITEMS NOT CALLED OUT FOR REMOVAL SHALL BE CLEARED & REMOVED AS REQUIRED AND DIRECTED BY THE ENGINEER. COST TO BE INCLUDED IN PRICE BID FOR SITE CLEARING. EXISTING SITE CONDITIONS MAY VARY FROM THOSE SHOWN ON THESE PLANS.

REMOVAL LEGEND

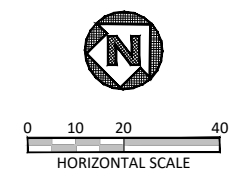
- TREES TO BE REMOVED
- REMOVAL ITEMS
- ABANDONEMENT ITEMS
- ASPHALT REMOVAL
- GRAVEL REMOVAL
- CONCRETE REMOVAL
- SIDEWALK/ RAMP REMOVAL
- CONCRETE DRIVE REMOVAL



EXISTING ROCK ISLAND ST OBSTRUCTION CONFLICTS			
NO.	STATION, OFFSET	DESCRIPTION	NOTE
27	416+70.80, 23.89 RT	TREE	REMOVE (3" CALIPER)
28	416+89.72, 22.49 RT	TREE	REMOVE (1" CALIPER)
29	417+10.97, 24.90 RT	TREE	PROTECT
30	417+24.76, 24.89 RT	TREE	PROTECT
31	417+38.89, 24.87 RT	TREE	PROTECT
32	417+53.06, 24.97 RT	TREE	PROTECT
33	417+68.12, 24.96 RT	TREE	PROTECT
34	418+44.31, 21.24 RT	GAS TEST	RELOCATE (BY OTHERS)
35	419+80.79, 30.57 RT	GAS METER	PROTECT
36	419+87.89, 31.14 RT	SSMH	PROTECT
37	420+62.67, 20.04 RT	BUS STOP SIGN	REMOVE & RESET
38	420+93.31, 23.08 RT	LANDSCAPING	SALVAGE LANDSCAPE ITEMS *
39	421+33.40, 21.74 RT	GAS WARNING SIGN	RESET (BY OTHERS)
40	422+58.44, 30.07 RT	TREE	PROTECT
41	423+39.31, 26.60 RT	OHE POLE	PROTECT
42	423+45.10, 36.37 RT	SSMH	PROTECT
43	423+55.61, 29.28 RT	TREE	PROTECT

* NOTE:

LANDSCAPING ITEMS TO BE SALVAGED IN COORDINATION WITH PROPERTY OWNER.



DATE	BY	REV	REVISION

2018 SAFE ROUTES TO SCHOOL IMPROVEMENTS

**ROCK ISLAND STREET
REMOVALS AND UTILITY ADJUSTMENTS
STA. 416+00.00 TO STA. 424+00.00
WJ TURNER ELEMENTARY SCHOOL**

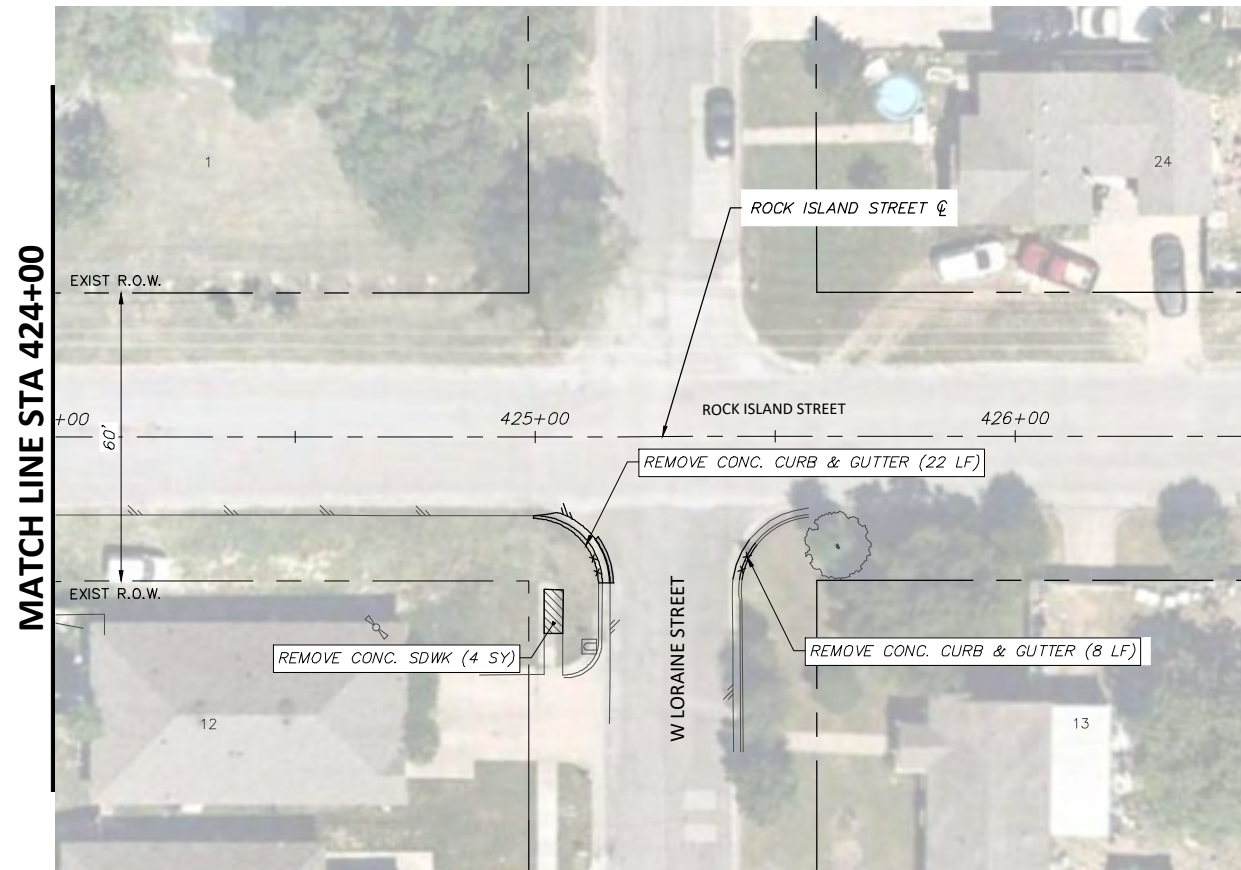
FED. RD. DIV. NO.	STATE	PROJECT NO.	HIGHWAY NO.		
6	TEXAS	STP 2021(929)TP	N/A		
STATE DISTRICT	COUNTY	CONTROL NO.	SECTION NO.	JOB NO.	SHEET NO.
FTW	TARRANT	0902	90	082	68

6/14/2021

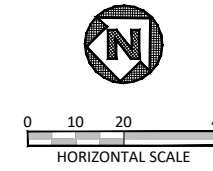
Joshua Wright

FULL PATH: G:\Production\500\002600\2684\002\Civil\Drawings\Plot Sheets\RMV - PLAN WJT\ROCK ISLAND ST

FILENAME: RMV-PL-RI.dwg
 PLOTTED BY: LEE MONASTESSE
 PLOTTED WITH: _DWG TO PDF.PC3



ROCK ISLAND STREET



NOTE:
 RETURN ALL REMOVED SIGNS TO TPW FIELD OPERATIONS SUPERVISOR SIDNEY RUTTER (SIDNEY.RUTTER@FORTWORTHTEXAS.GOV) AT 5001 JAMES AVE, FORT WORTH, TX.
 ITEMS NOT CALLED OUT FOR REMOVAL SHALL BE CLEARED & REMOVED AS REQUIRED AND DIRECTED BY THE ENGINEER. COST TO BE INCLUDED IN PRICE BID FOR SITE CLEARING. EXISTING SITE CONDITIONS MAY VARY FROM THOSE SHOWN ON THESE PLANS.

REMOVAL LEGEND	
	TREES TO BE REMOVED
	REMOVAL ITEMS
	ABANDONEMENT ITEMS
	ASPHALT REMOVAL
	GRAVEL REMOVAL
	CONCRETE REMOVAL
	SIDEWALK/ RAMP REMOVAL
	CONCRETE DRIVE REMOVAL

DATE	BY	REV	REVISION

DUNAWAY (TX REG #1114) 550 Bailey Avenue
 Suite 400
 Fort Worth, TX 76107
 817-335-1121

FORT WORTH
 PROJ NO. 101264 FILE NO. K-2630

Texas Department of Transportation
 © 2020

2018 SAFE ROUTES TO SCHOOL IMPROVEMENTS

**ROCK ISLAND STREET
 REMOVALS AND UTILITY ADJUSTMENTS
 STA. 424+00.00 TO STA. 426+54.00
 WJ TURNER ELEMENTARY SCHOOL**

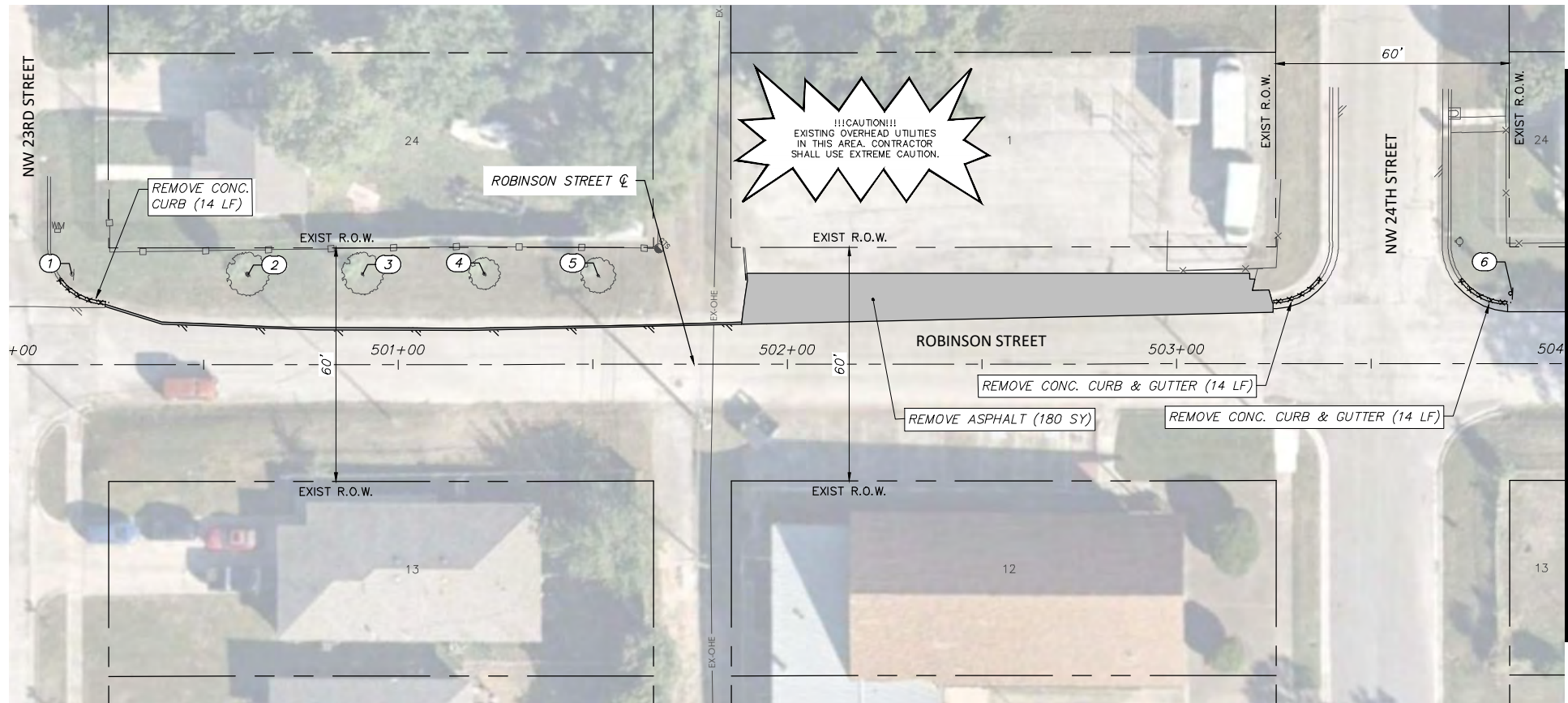
FED. RD. DIV. NO.	STATE	PROJECT NO.		HIGHWAY NO.	
6	TEXAS	STP 2021(929)TP		N/A	
STATE DISTRICT	COUNTY	CONTROL NO.	SECTION NO.	JOB NO.	SHEET NO.
FTW	TARRANT	0902	90	082	69

6/14/2021

 Joshua Wright

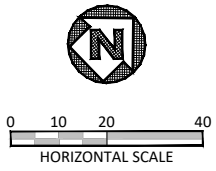
FULL PATH: G:\Production\500\002600\2684\002\Civil\Drawings\Plot Sheets\RMV - PLAN WJT\ROBINSON ST

FILENAME: RMV-PL-RB.dwg
 PLOTTED BY: LEE MONASTESSE
 PLOTTED WITH: _DWG TO PDF.PC3



ROBINSON STREET

MATCH LINE STA 504+00



NOTE:
 RETURN ALL REMOVED SIGNS TO TPW FIELD OPERATIONS SUPERVISOR SIDNEY RUTTER (SIDNEY.RUTTER@FORTWORTHTEXAS.GOV) AT 5001 JAMES AVE, FORT WORTH, TX.
 ITEMS NOT CALLED OUT FOR REMOVAL SHALL BE CLEARED & REMOVED AS REQUIRED AND DIRECTED BY THE ENGINEER. COST TO BE INCLUDED IN PRICE BID FOR SITE CLEARING. EXISTING SITE CONDITIONS MAY VARY FROM THOSE SHOWN ON THESE PLANS.

REMOVAL LEGEND	
	TREES TO BE REMOVED
	REMOVAL ITEMS
	ABANDONEMENT ITEMS
	ASPHALT REMOVAL
	GRAVEL REMOVAL
	CONCRETE REMOVAL
	SIDEWALK/ RAMP REMOVAL
	CONCRETE DRIVE REMOVAL

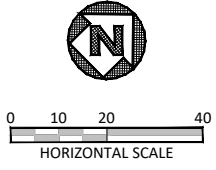
EXISTING ROBINSON ST OBSTRUCTION CONFLICTS			
NO.	STATION, OFFSET	DESCRIPTION	NOTE
1	500+16.31, 23.19 LT	STOP SIGN	PROTECT
2	500+61.46, 23.11 LT	TREE	PROTECT
3	500+90.94, 23.22 LT	TREE	PROTECT
4	501+22.26, 23.22 LT	TREE	PROTECT
5	501+51.48, 22.73 LT	TREE	PROTECT
6	503+86.39, 18.00 LT	STOP SIGN	REMOVE & RESET
7	504+35.94, 22.66 LT	TREE	REMOVE (2" CALIPER)
8	505+20.80, 20.54 LT	LANDSCAPING	PROTECT



ROBINSON STREET

MATCH LINE STA 504+00

MATCH LINE STA 508+00



* NOTE:
 LANDSCAPING ITEMS TO BE SALVAGED IN COORDINATION WITH PROPERTY OWNER

DATE	BY	REV	REVISION

DUNAWAY 550 Bailey Avenue
 Suite 400
 Fort Worth, TX 76107
 (TX REG F-1114) 817-335-1121

FORT WORTH
 PROJ NO. 101264 FILE NO. K-2630

Texas Department of Transportation
 © 2020

2018 SAFE ROUTES TO SCHOOL IMPROVEMENTS

**ROBINSON STREET
 REMOVALS AND UTILITY ADJUSTMENTS
 STA. 500+00.00 TO STA. 508+00.00
 WJ TURNER ELEMENTARY SCHOOL**

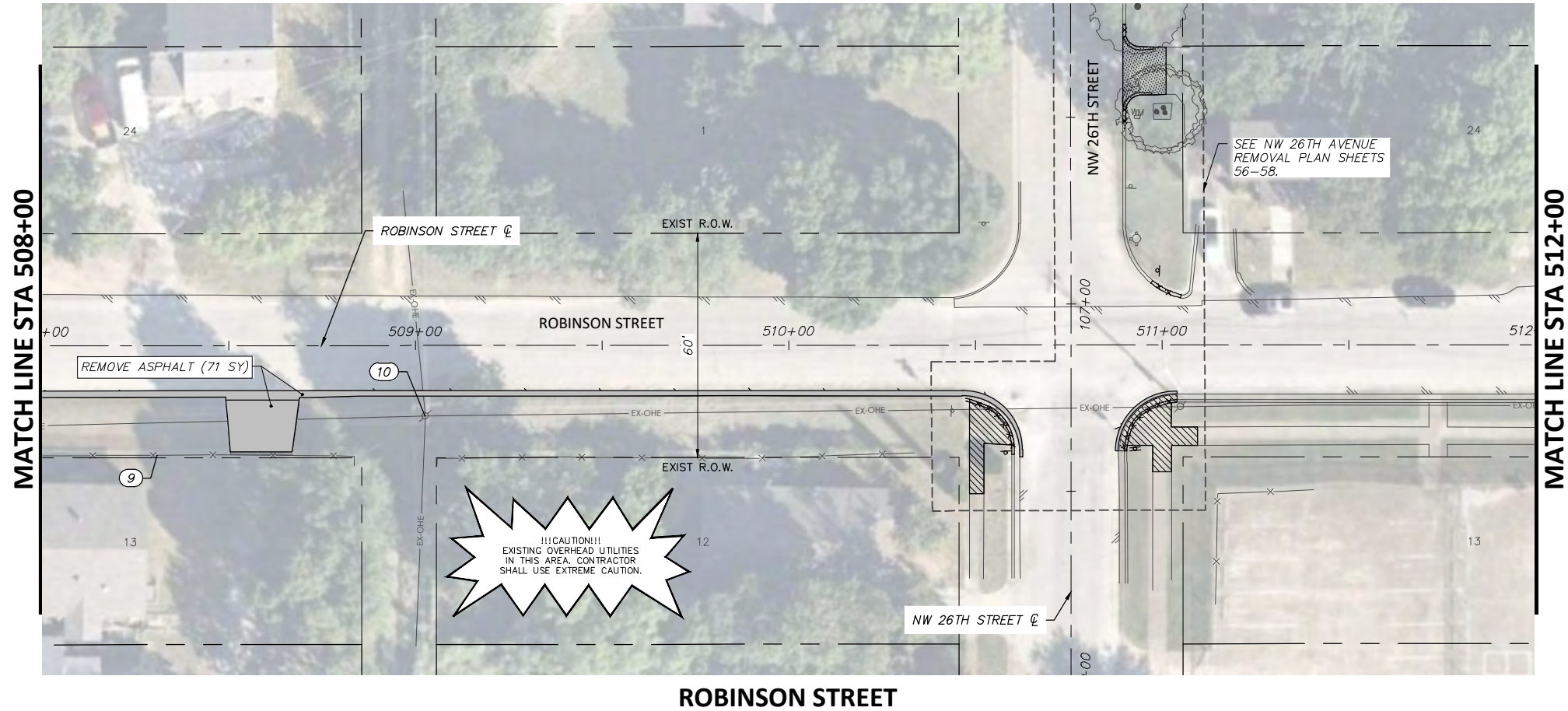
6/14/2021

 Joshua Wright

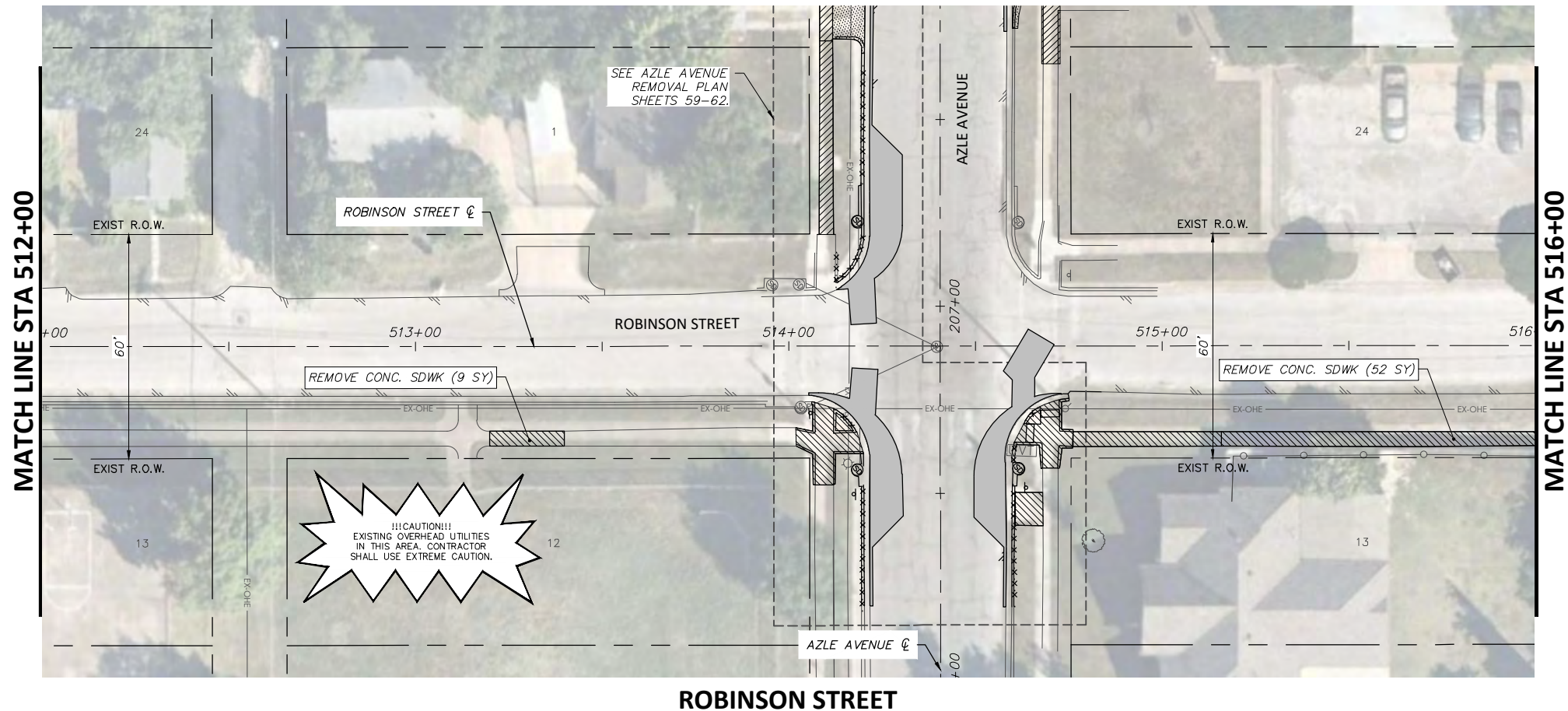
FED. RD. DIV. NO.	STATE	PROJECT NO.	HIGHWAY NO.		
6	TEXAS	STP 2021(929)TP	N/A		
STATE DISTRICT	COUNTY	CONTROL NO.	SECTION NO.	JOB NO.	SHEET NO.
FTW	TARRANT	0902	90	082	70

FULL PATH: G:\Production\500\002600\2684\002\Civil\Drawings\Plot Sheets\RMVL-PLAN-WJT\ROBINSON ST

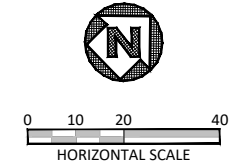
FILENAME: RMVL-PL-RB.dwg
 PLOTTED BY: LEE MONASTESSE
 PLOTTED WITH: _DWG TO PDF.PC3



ROBINSON STREET



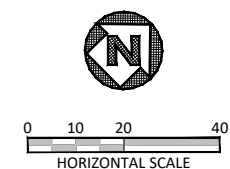
ROBINSON STREET



NOTE:
 RETURN ALL REMOVED SIGNS TO TPW FIELD OPERATIONS SUPERVISOR SIDNEY RUTTER (SIDNEY.RUTTER@FORTWORTHTEXAS.GOV) AT 5001 JAMES AVE, FORT WORTH, TX.
 ITEMS NOT CALLED OUT FOR REMOVAL SHALL BE CLEARED & REMOVED AS REQUIRED AND DIRECTED BY THE ENGINEER. COST TO BE INCLUDED IN PRICE BID FOR SITE CLEARING. EXISTING SITE CONDITIONS MAY VARY FROM THOSE SHOWN ON THESE PLANS.

REMOVAL LEGEND	
	TREES TO BE REMOVED
	REMOVAL ITEMS
	ABANDONMENT ITEMS
	ASPHALT REMOVAL
	GRAVEL REMOVAL
	CONCRETE REMOVAL
	SIDEWALK/ RAMP REMOVAL
	CONCRETE DRIVE REMOVAL

EXISTING ROBINSON ST OBSTRUCTION CONFLICTS			
NO.	STATION, OFFSET	DESCRIPTION	NOTE
9	508+30.87, 29.27 RT	FENCE	PROTECT
10	509+02.68, 18.92 RT	OHE POLE	PROTECT



DATE	BY	REV	REVISION

DUNAWAY 550 Bailey Avenue
 Suite 400
 Fort Worth, TX 76107
 (TX REG #1114) 817-335-1121

FORT WORTH

PROJ NO. 101264 FILE NO. K-2630

Texas Department of Transportation
 © 2020

2018 SAFE ROUTES TO SCHOOL IMPROVEMENTS

**ROBINSON STREET
 REMOVALS AND UTILITY ADJUSTMENTS
 STA. 508+00.00 TO STA. 516+00.00
 WJ TURNER ELEMENTARY SCHOOL**

FED. RD. DIV. NO.	STATE	PROJECT NO.	HIGHWAY NO.		
6	TEXAS	STP 2021(929)TP	N/A		
STATE DISTRICT	COUNTY	CONTROL NO.	SECTION NO.	JOB NO.	SHEET NO.
FTW	TARRANT	0902	90	082	71

6/14/2021

JOSHUA WRIGHT
 125733
 LICENSED PROFESSIONAL ENGINEER