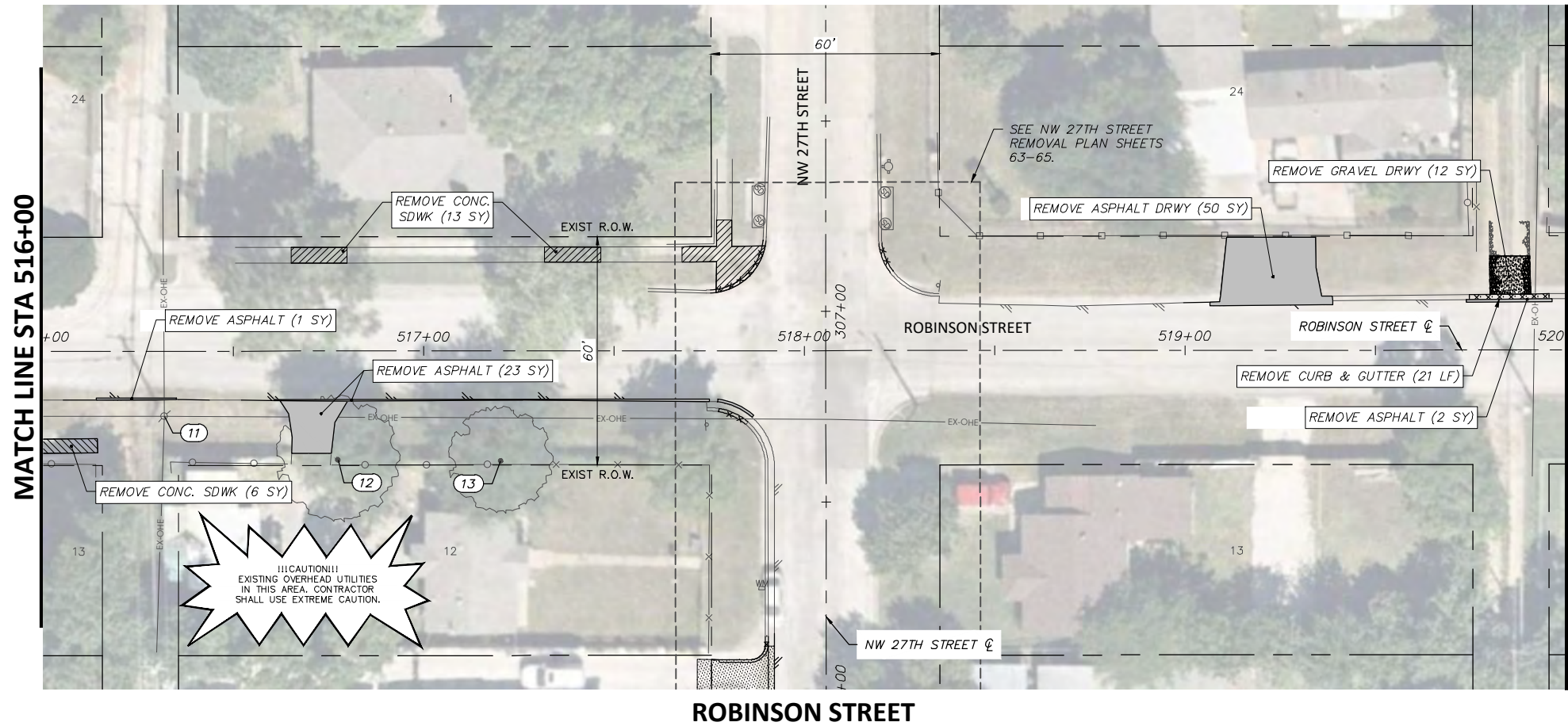
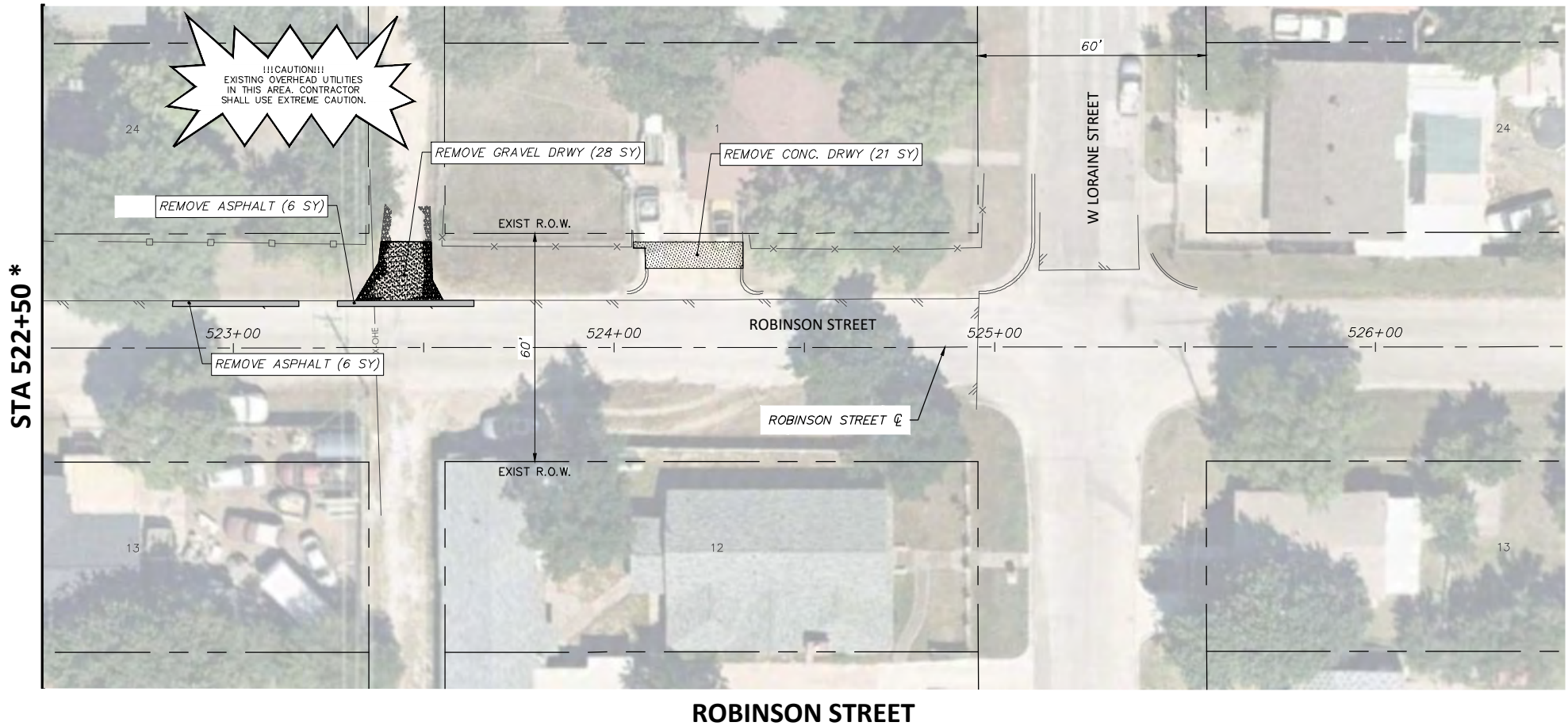


FULL PATH: G:\Production\500\002600\2684\002\Civil\Drawings\Plot Sheets\RMVL-PLAN-WJT\ROBINSON ST

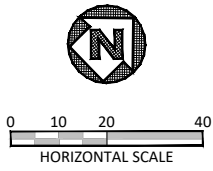
FILENAME: RMVL-PL-RB.dwg  
 PLOTTED BY: LEE MONASTESSE  
 PLOTTED WITH: \_DWG TO PDF.PC3



ROBINSON STREET



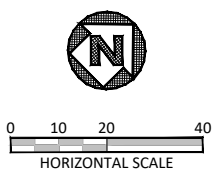
ROBINSON STREET



**NOTE:**  
 RETURN ALL REMOVED SIGNS TO TPW FIELD OPERATIONS SUPERVISOR SIDNEY RUTTER (SIDNEY.RUTTER@FORTWORTHTEXAS.GOV) AT 5001 JAMES AVE, FORT WORTH, TX.  
 ITEMS NOT CALLED OUT FOR REMOVAL SHALL BE CLEARED & REMOVED AS REQUIRED AND DIRECTED BY THE ENGINEER. COST TO BE INCLUDED IN PRICE BID FOR SITE CLEARING. EXISTING SITE CONDITIONS MAY VARY FROM THOSE SHOWN ON THESE PLANS.

REMOVAL LEGEND	
	TREES TO BE REMOVED
	REMOVAL ITEMS
	ABANDONMENT ITEMS
	ASPHALT REMOVAL
	GRAVEL REMOVAL
	CONCRETE REMOVAL
	SIDEWALK/ RAMP REMOVAL
	CONCRETE DRIVE REMOVAL

EXISTING ROBINSON ST OBSTRUCTION CONFLICTS			
NO.	STATION, OFFSET	DESCRIPTION	NOTE
11	516+31.92, 17.08 RT	OHE POLE	PROTECT
12	516+77.54, 28.63 RT	TREE	PROTECT
13	517+20.28, 28.92 RT	TREE	PROTECT



\* THERE ARE NO REMOVALS BETWEEN STA 520+00 THRU STA 522+50.

6/14/2021  
  
 Joshua Wright

DATE	BY	REV	REVISION

**DUNAWAY** 550 Bailey Avenue  
 Suite 400  
 Fort Worth, TX 76107  
 (TX REG #1114) 817-335-1121

**FORT WORTH**

PROJ NO. 101264 FILE NO. K-2630

Texas Department of Transportation  
 © 2020

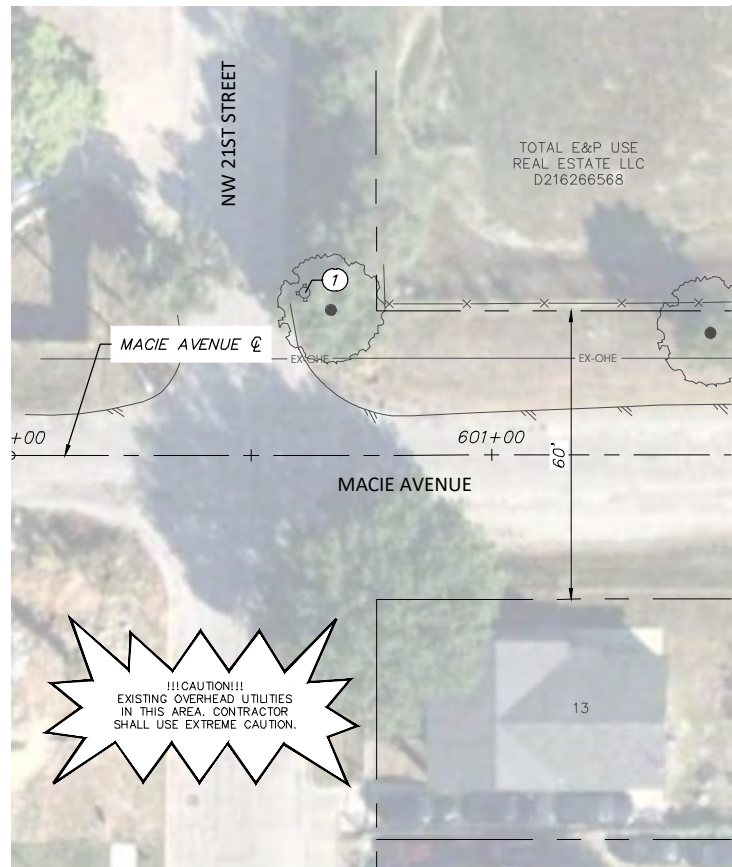
2018 SAFE ROUTES TO SCHOOL IMPROVEMENTS

**ROBINSON STREET  
 REMOVALS AND UTILITY ADJUSTMENTS  
 STA. 516+00.00 TO STA. 526+50.00  
 WJ TURNER ELEMENTARY SCHOOL**

FED. RD. DIV. NO.	STATE	PROJECT NO.	HIGHWAY NO.		
6	TEXAS	STP 2021(929)TP	N/A		
STATE DISTRICT	COUNTY	CONTROL NO.	SECTION NO.	JOB NO.	SHEET NO.
FTW	TARRANT	0902	90	082	72

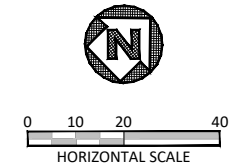
FULL PATH: G:\Production\500\002600\2684\002\Civil\Drawings\Plot Sheets\RMV-PLAN WJT\MACIE AVE

FILENAME: RMV-PL-MC.dwg  
 PLOTTED BY: LEE MONASTESSE  
 PLOTTED WITH: \_DWG TO PDF.PC3



STA 601+50 \*

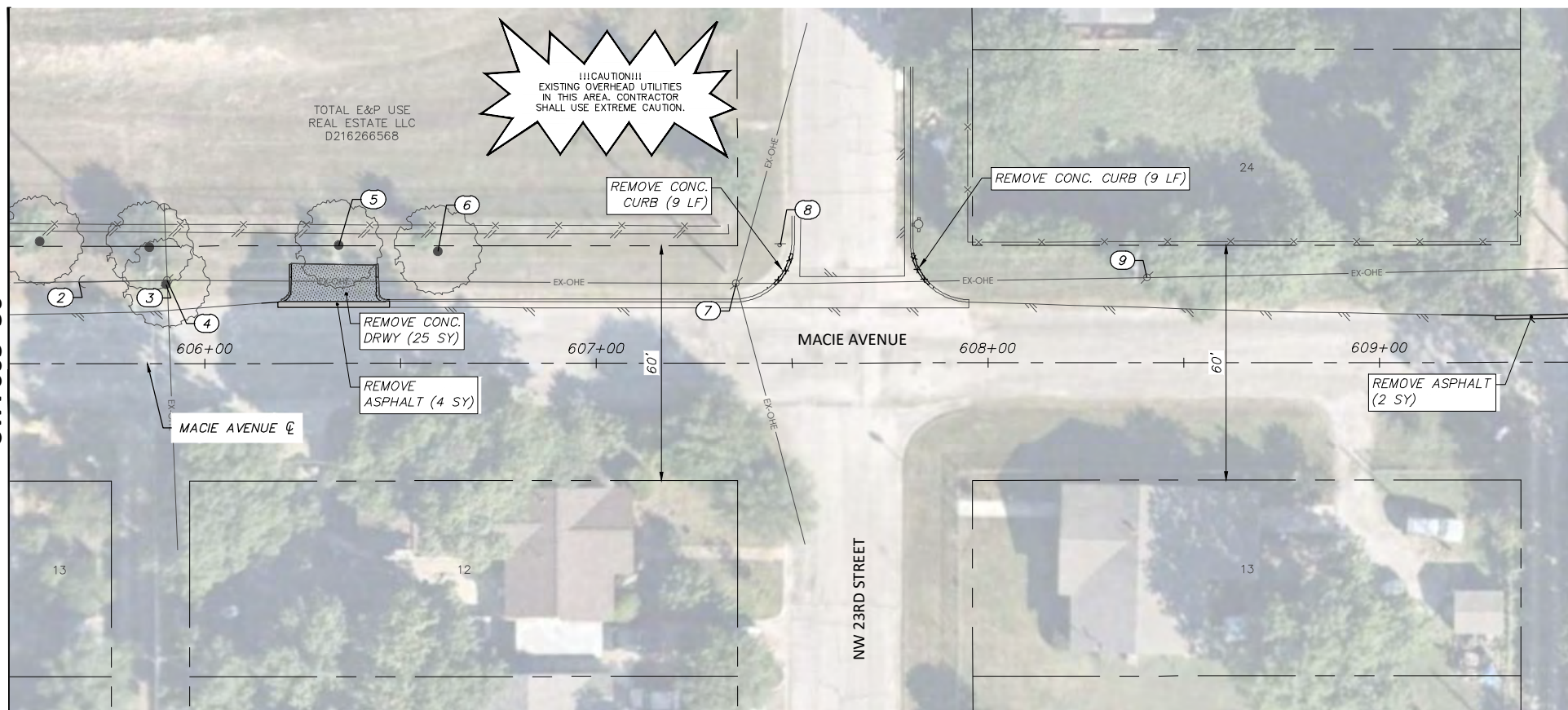
MACIE AVENUE



**NOTE:**  
 RETURN ALL REMOVED SIGNS TO TPW FIELD OPERATIONS SUPERVISOR SIDNEY RUTTER (SIDNEY.RUTTER@FORTWORTHTEXAS.GOV) AT 5001 JAMES AVE, FORT WORTH, TX.  
 ITEMS NOT CALLED OUT FOR REMOVAL SHALL BE CLEARED & REMOVED AS REQUIRED AND DIRECTED BY THE ENGINEER. COST TO BE INCLUDED IN PRICE BID FOR SITE CLEARING. EXISTING SITE CONDITIONS MAY VARY FROM THOSE SHOWN ON THESE PLANS.

REMOVAL LEGEND	
	TREES TO BE REMOVED
	REMOVAL ITEMS
	ABANDONEMENT ITEMS
	ASPHALT REMOVAL
	GRAVEL REMOVAL
	CONCRETE REMOVAL
	SIDEWALK/ RAMP REMOVAL
	CONCRETE DRIVE REMOVAL

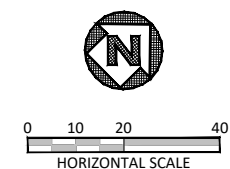
EXISTING MACIE AVE OBSTRUCTION CONFLICTS			
NO.	CL STATION, OFFSET	DESCRIPTION	NOTE
1	600+61.19, 33.81 LT	FIRE HYDRANT	PROTECT
2	605+67.96, 20.82 LT	GUY WIRE	PROTECT
3	605+90.10, 20.27 LT	TREE	PROTECT
4	605+90.34, 21.27 LT	OHE POLE	PROTECT
5	606+34.24, 30.12 LT	TREE	PROTECT
6	606+59.52, 28.61 LT	TREE	PROTECT
7	607+35.74, 20.34 LT	OHE POLE	PROTECT
8	607+46.94, 30.07 LT	STOP SIGN	PROTECT
9	608+40.70, 21.78 LT	OHE POLE	PROTECT



STA 605+50 \*

MATCH LINE STA 609+50

MACIE AVENUE



\* THERE ARE NO REMOVALS BETWEEN STA 601+50 AND STA 605+50.

DATE	BY	REV	REVISION

**DUNAWAY** 550 Bailey Avenue  
 Suite 400  
 Fort Worth, TX 76107  
 (TX REG #1114) 817-335-1121

**FORT WORTH**

PROJ NO. 101264 FILE NO. K-2630

Texas Department of Transportation  
 © 2020

2018 SAFE ROUTES TO SCHOOL IMPROVEMENTS

**MACIE AVENUE  
 REMOVALS AND UTILITY ADJUSTMENTS  
 STA. 600+00.00 TO STA. 609+50.00  
 WJ TURNER ELEMENTARY SCHOOL**

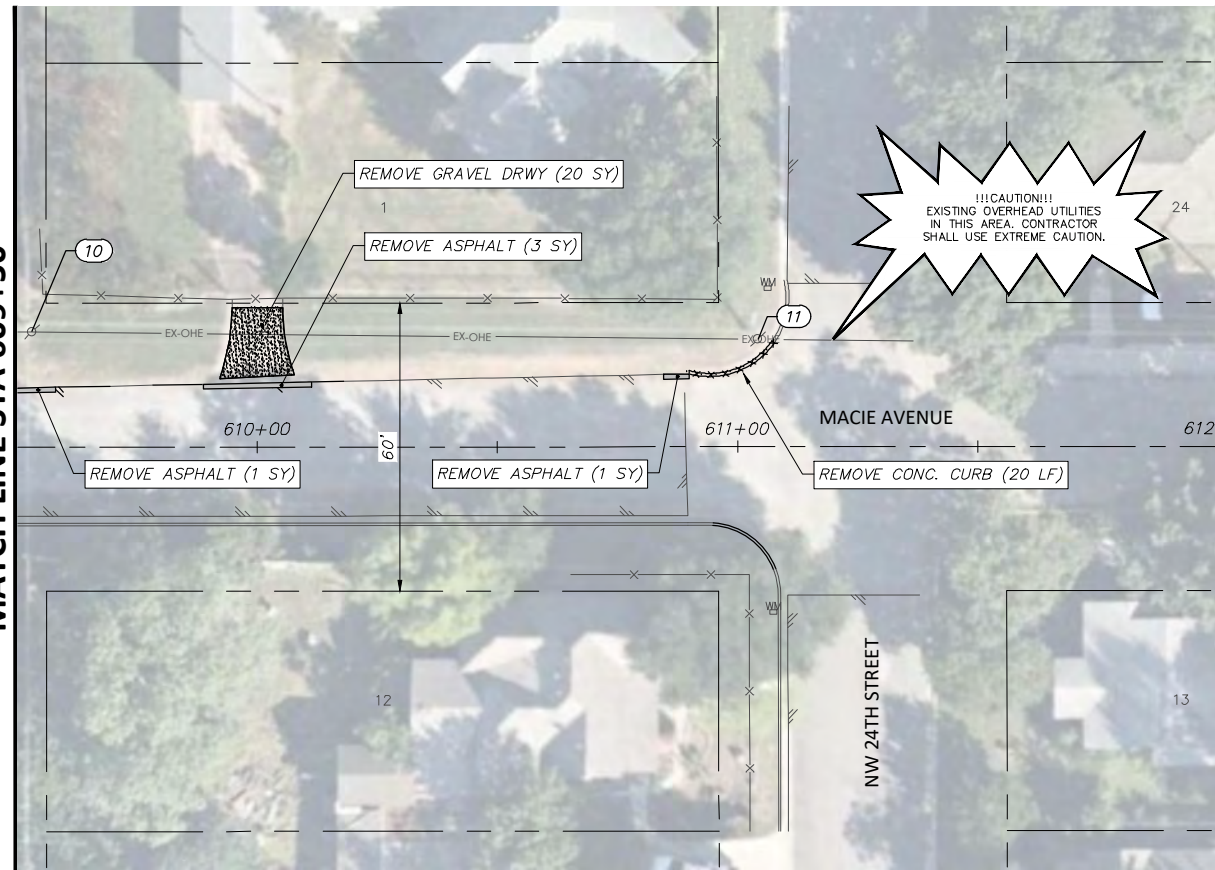
FED. RD. DIV. NO.	STATE	PROJECT NO.	HIGHWAY NO.		
6	TEXAS	STP 2021(929)TP	N/A		
STATE DISTRICT	COUNTY	CONTROL NO.	SECTION NO.	JOB NO.	SHEET NO.
FTW	TARRANT	0902	90	082	73

6/14/2021

FULL PATH: G:\Production\500\002600\2684\002\Civil\Drawings\Plot Sheets\RMVL-PLAN-WJT\MACIE AVE

FILENAME: RMVL-PL-MC.dwg  
 PLOTTED BY: LEE MONASTESSE  
 PLOTTED WITH: \_DWG TO PDF.PC3

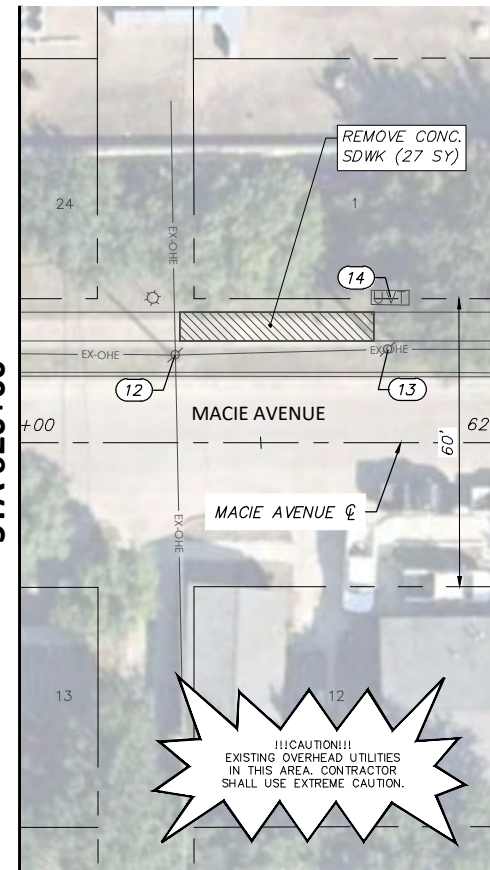
MATCH LINE STA 609+50



MACIE AVENUE

STA 612+00 \*

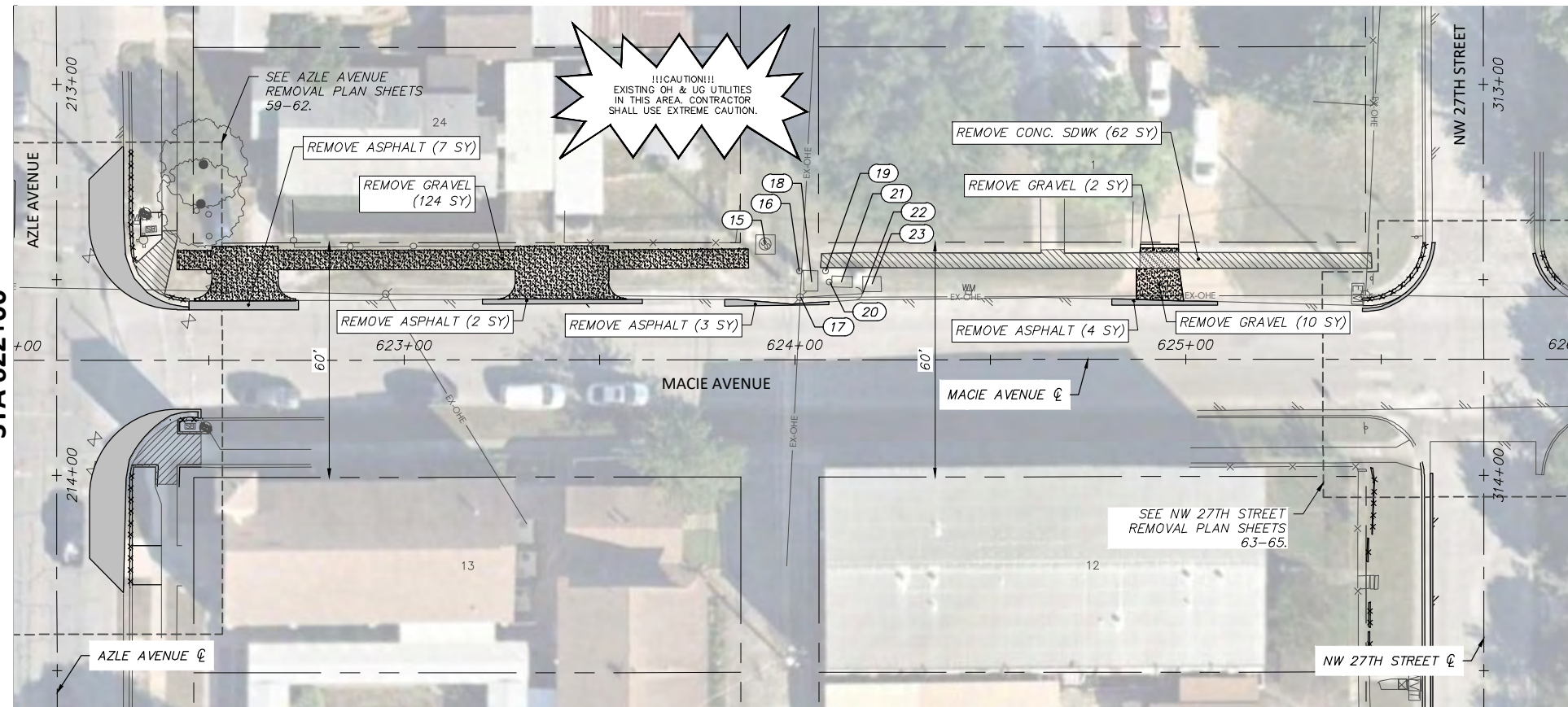
STA 620+00 \*



MACIE AVENUE

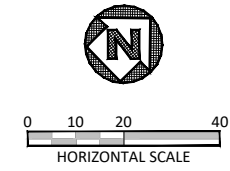
STA 621+00 \*

STA 622+00 \*



MACIE AVENUE

MATCH LINE STA 626+00



**NOTE:**  
 RETURN ALL REMOVED SIGNS TO TPW FIELD OPERATIONS SUPERVISOR SIDNEY RUTTER (SIDNEY.RUTTER@FORTWORTHTEXAS.GOV) AT 5001 JAMES AVE, FORT WORTH, TX.  
 ITEMS NOT CALLED OUT FOR REMOVAL SHALL BE CLEARED & REMOVED AS REQUIRED AND DIRECTED BY THE ENGINEER. COST TO BE INCLUDED IN PRICE BID FOR SITE CLEARING. EXISTING SITE CONDITIONS MAY VARY FROM THOSE SHOWN ON THESE PLANS.

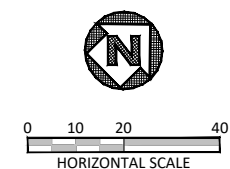
**REMOVAL LEGEND**

- TREES TO BE REMOVED
- REMOVAL ITEMS
- ABANDONEMENT ITEMS
- ASPHALT REMOVAL
- GRAVEL REMOVAL
- CONCRETE REMOVAL
- SIDEWALK/ RAMP REMOVAL
- CONCRETE DRIVE REMOVAL

**EXISTING MACIE AVE OBSTRUCTION CONFLICTS**

NO.	☉ STATION, OFFSET	DESCRIPTION	NOTE
10	609+53.08, 24.04 LT	OHE POLE	PROTECT
11	611+04.25, 22.37 LT	OHE POLE	PROTECT
12	620+32.20, 18.26 LT	OHE POLE	PROTECT
13	620+76.41, 19.46 LT	OHE POLE	PROTECT
14	620+77.10, 30.30 LT	UNKNOWN VAULT	PROTECT
15	623+92.46, 29.51 LT	SSMH	PROTECT
16	624+01.18, 22.68 LT	BOLLARD	PROTECT
17	624+01.41, 16.02 LT	OHE POLE	PROTECT
18	624+04.25, 19.79 LT	COMM. CABINET	PROTECT
19	624+07.86, 22.58 LT	BOLLARD	PROTECT
20	624+08.83, 19.88 LT	BOLLARD	PROTECT
21	624+11.85, 19.82 LT	COMM VAULT	PROTECT
22	624+17.24, 16.93 LT	GUY WIRE	PROTECT
23	624+19.74, 19.25 LT	COMM. CABINET	PROTECT

NO REMOVALS BETWEEN STA 612+00 AND STA 620+00, STA 621+00 AND STA 622+00.



6/14/2021  
  
 Joshua Wright

DATE	BY	REV	REVISION

**DUNAWAY** 550 Bailey Avenue  
 Suite 400  
 Fort Worth, TX 76107  
 (TX REG F-1114) 817-335-1121

**FORT WORTH**

PROJ NO. 101264 FILE NO. K-2630

Texas Department of Transportation  
 © 2020

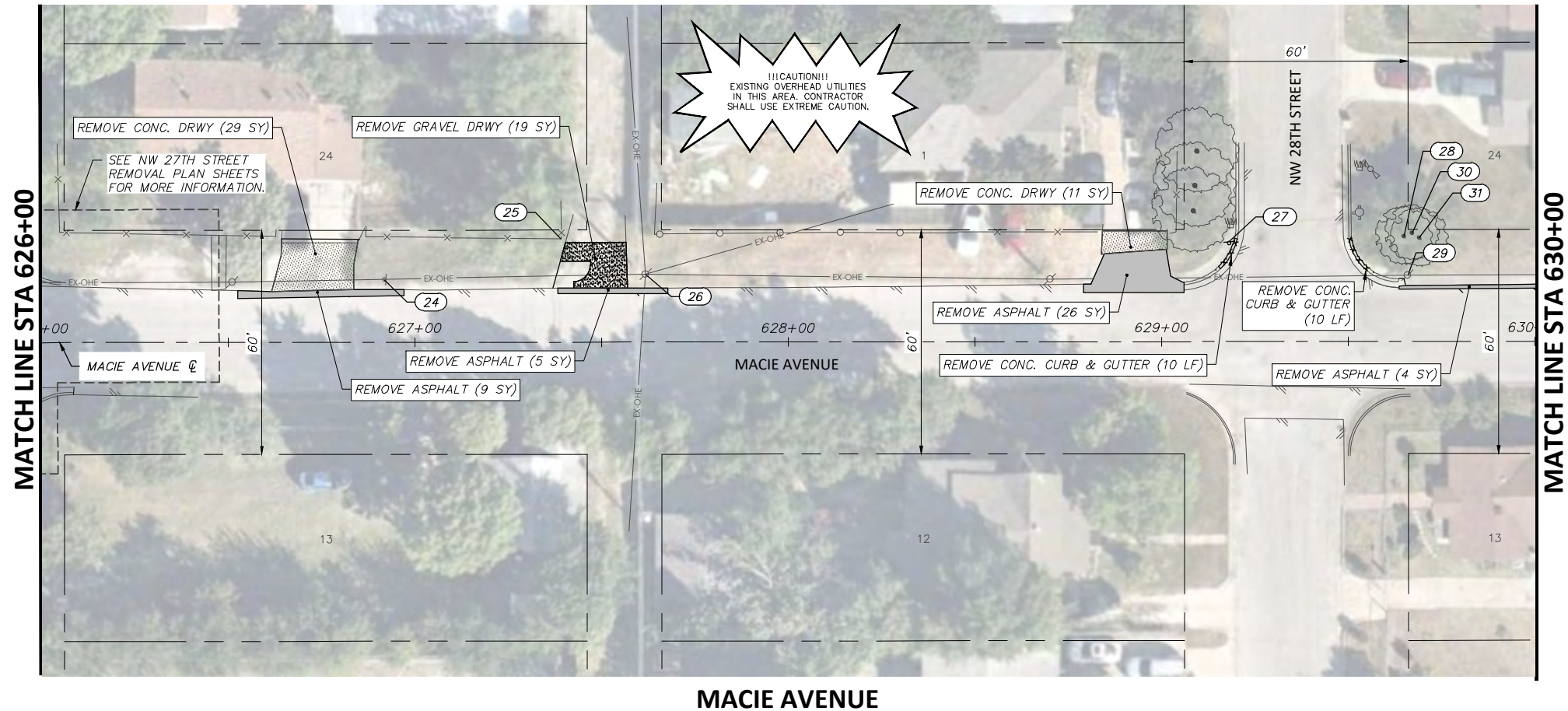
2018 SAFE ROUTES TO SCHOOL IMPROVEMENTS

**MACIE AVENUE**  
 REMOVALS AND UTILITY ADJUSTMENTS  
 STA. 609+50.00 TO STA. 626+00.00  
 WJ TURNER ELEMENTARY SCHOOL

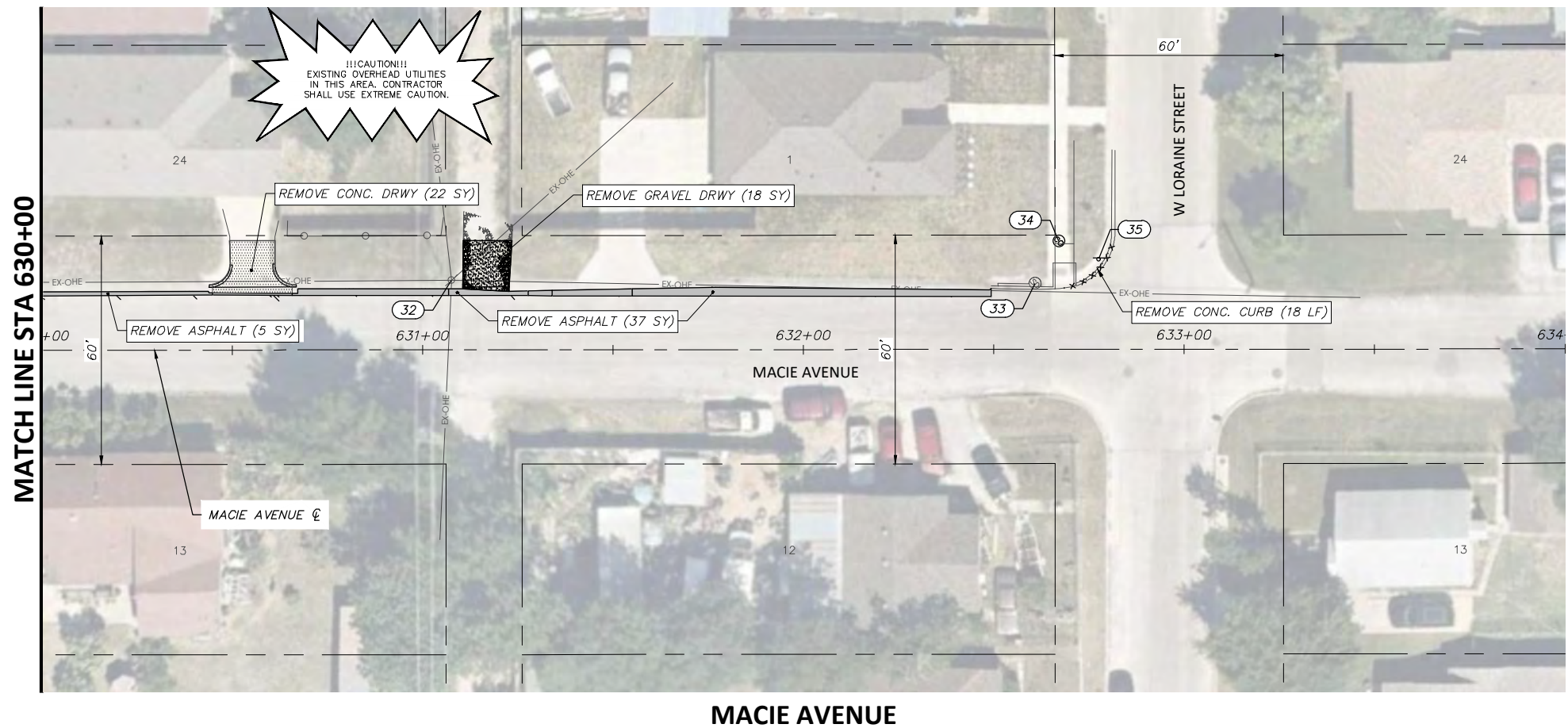
FED. RD. DIV. NO.	STATE	PROJECT NO.	HIGHWAY NO.		
6	TEXAS	STP 2021(929)TP	N/A		
STATE DISTRICT	COUNTY	CONTROL NO.	SECTION NO.	JOB NO.	SHEET NO.
FTW	TARRANT	0902	90	082	74

FULL PATH: G:\Production\500\002600\2684\002\Civil\Drawings\Plot Sheets\RMVL-PLAN WJT\MACIE AVE

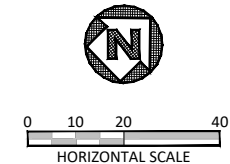
FILENAME: RMVL-PL-MC.dwg  
 PLOTTED BY: LEE MONASTESSE  
 PLOTTED WITH: \_DWG TO PDF.PC3



MACIE AVENUE



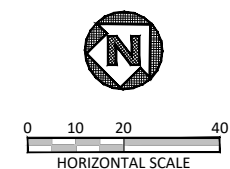
MACIE AVENUE



NOTE:  
 RETURN ALL REMOVED SIGNS TO TPW FIELD OPERATIONS SUPERVISOR SIDNEY RUTTER (SIDNEY.RUTTER@FORTWORTHTEXAS.GOV) AT 5001 JAMES AVE, FORT WORTH, TX.  
 ITEMS NOT CALLED OUT FOR REMOVAL SHALL BE CLEARED & REMOVED AS REQUIRED AND DIRECTED BY THE ENGINEER. COST TO BE INCLUDED IN PRICE BID FOR SITE CLEARING. EXISTING SITE CONDITIONS MAY VARY FROM THOSE SHOWN ON THESE PLANS.

REMOVAL LEGEND	
	TREES TO BE REMOVED
	REMOVAL ITEMS
	ABANDONEMENT ITEMS
	ASPHALT REMOVAL
	GRAVEL REMOVAL
	CONCRETE REMOVAL
	SIDEWALK/ RAMP REMOVAL
	CONCRETE DRIVE REMOVAL

EXISTING MACIE AVE OBSTRUCTION CONFLICTS			
NO.	STATION, OFFSET	DESCRIPTION	NOTE
24	626+91.82, 16.77 LT	CROSS WALK AHEAD SIGN	REMOVE & RESET
25	627+39.21, 27.65 LT	FENCE	PROTECT
26	627+61.79, 18.18 LT	OHE POLE	PROTECT
27	629+18.04, 26.70 LT	STOP SIGN	REMOVE & RESET
28	629+64.89, 28.15 LT	TREE	PROTECT
29	629+65.85, 17.69 LT	OHE POLE	PROTECT
30	629+67.09, 29.03 LT	TREE	PROTECT
31	629+69.01, 27.76 LT	TREE	PROTECT
32	631+07.56, 18.23 LT	OHE POLE	PROTECT
33	632+60.84, 17.30 LT	STORM DRAIN	PROTECT
34	632+67.14, 28.35 LT	SS CLEAN OUT	PROTECT (ADJUST TO GRADE)
35	632+77.60, 24.05 LT	STOP SIGN	REMOVE & RESET



6/14/2021  
  
 Joshua Wright  
 LICENSED PROFESSIONAL ENGINEER

DATE	BY	REV	REVISION

**DUNAWAY** 550 Bailey Avenue  
 Suite 400  
 Fort Worth, TX 76107  
 (TX REG #1114) 817-335-1121

**FORT WORTH**

PROJ NO. 101264 FILE NO. K-2630

Texas Department of Transportation  
 © 2020

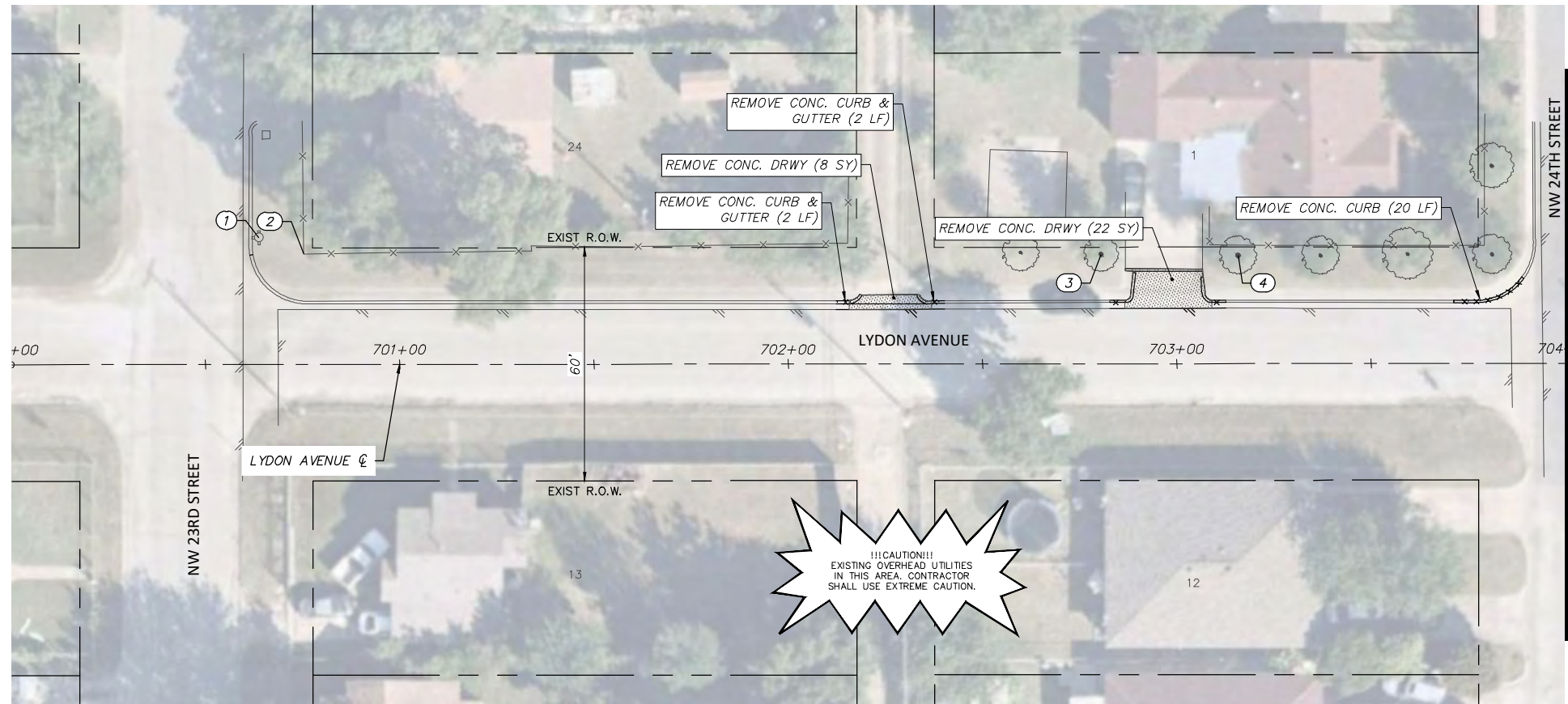
2018 SAFE ROUTES TO SCHOOL IMPROVEMENTS

**MACIE AVENUE**  
**REMOVALS AND UTILITY ADJUSTMENTS**  
**STA. 626+00.00 TO STA. 634+00.00**  
**WJ TURNER ELEMENTARY SCHOOL**

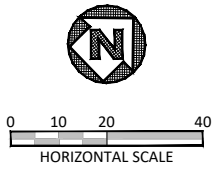
FED. RD. DIV. NO.	STATE	PROJECT NO.	HIGHWAY NO.		
6	TEXAS	STP 2021(929)TP	N/A		
STATE DISTRICT	COUNTY	CONTROL NO.	SECTION NO.	JOB NO.	SHEET NO.
FTW	TARRANT	0902	90	082	75

FULL PATH: G:\Production\500\002600\2684\002\Civil\Drawings\Plot Sheets\RMV-PLAN\_WJT\LYDON AVE

FILENAME: RMV-PL-LY.dwg  
 PLOTTED BY: LEE MONASTESSE  
 PLOTTED WITH: \_DWG TO PDF.PC3



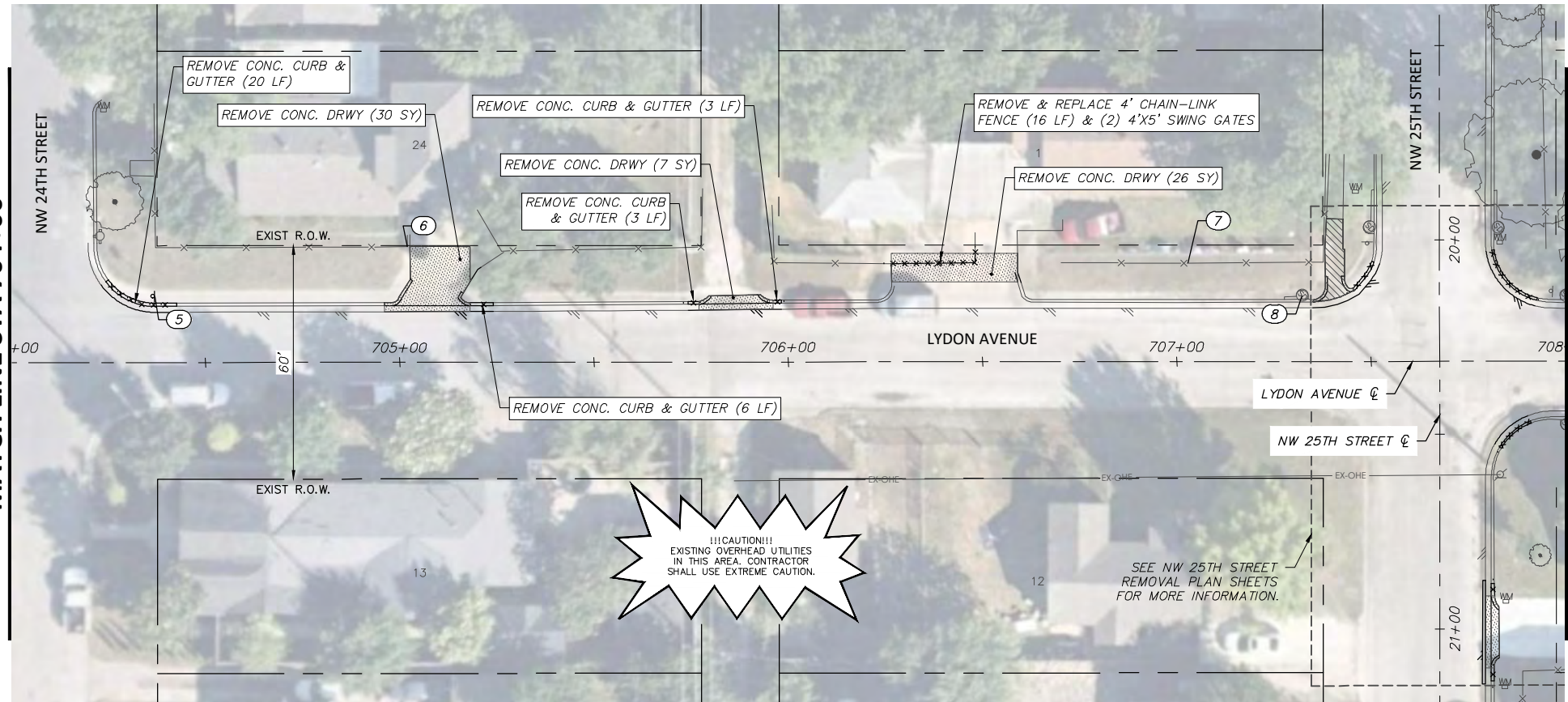
**LYDON AVENUE**



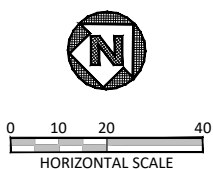
**NOTE:**  
 RETURN ALL REMOVED SIGNS TO TPW FIELD OPERATIONS SUPERVISOR SIDNEY RUTTER (SIDNEY.RUTTER@FORTWORTHTEXAS.GOV) AT 5001 JAMES AVE, FORT WORTH, TX.  
 ITEMS NOT CALLED OUT FOR REMOVAL SHALL BE CLEARED & REMOVED AS REQUIRED AND DIRECTED BY THE ENGINEER. COST TO BE INCLUDED IN PRICE BID FOR SITE CLEARING. EXISTING SITE CONDITIONS MAY VARY FROM THOSE SHOWN ON THESE PLANS.

REMOVAL LEGEND	
	TREES TO BE REMOVED
	REMOVAL ITEMS
	ABANDONEMENT ITEMS
	ASPHALT REMOVAL
	GRAVEL REMOVAL
	CONCRETE REMOVAL
	SIDEWALK/ RAMP REMOVAL
	CONCRETE DRIVE REMOVAL

EXISTING LYDON STREET OBSTRUCTION CONFLICTS			
NO.	☉ STATION, OFFSET	DESCRIPTION	NOTE
1	700+63.79, 32.63 LT	FIRE HYDRANT	PROTECT
2	700+75.33, 28.41 LT	FENCE	PROTECT
3	702+80.54, 28.16 LT	TREE	PROTECT
4	703+15.78, 27.83 LT	TREE	PROTECT
5	704+36.91, 16.94 LT	STOP SIGN	REMOVE & RESET
6	705+01.98, 29.68 LT	FENCE	PROTECT
7	707+02.78, 25.29 LT	FENCE	PROTECT
8	707+32.36, 17.02 LT	STORM DRAIN	PROTECT



**LYDON AVENUE**



DATE	BY	REV	REVISION

**DUNAWAY** 550 Bailey Avenue  
 Suite 400  
 Fort Worth, TX 76107  
 (TX REG #1114) 817-335-1121

**FORT WORTH**

PROJ NO. 101264 FILE NO. K-2630

Texas Department of Transportation  
 © 2020

2018 SAFE ROUTES TO SCHOOL IMPROVEMENTS

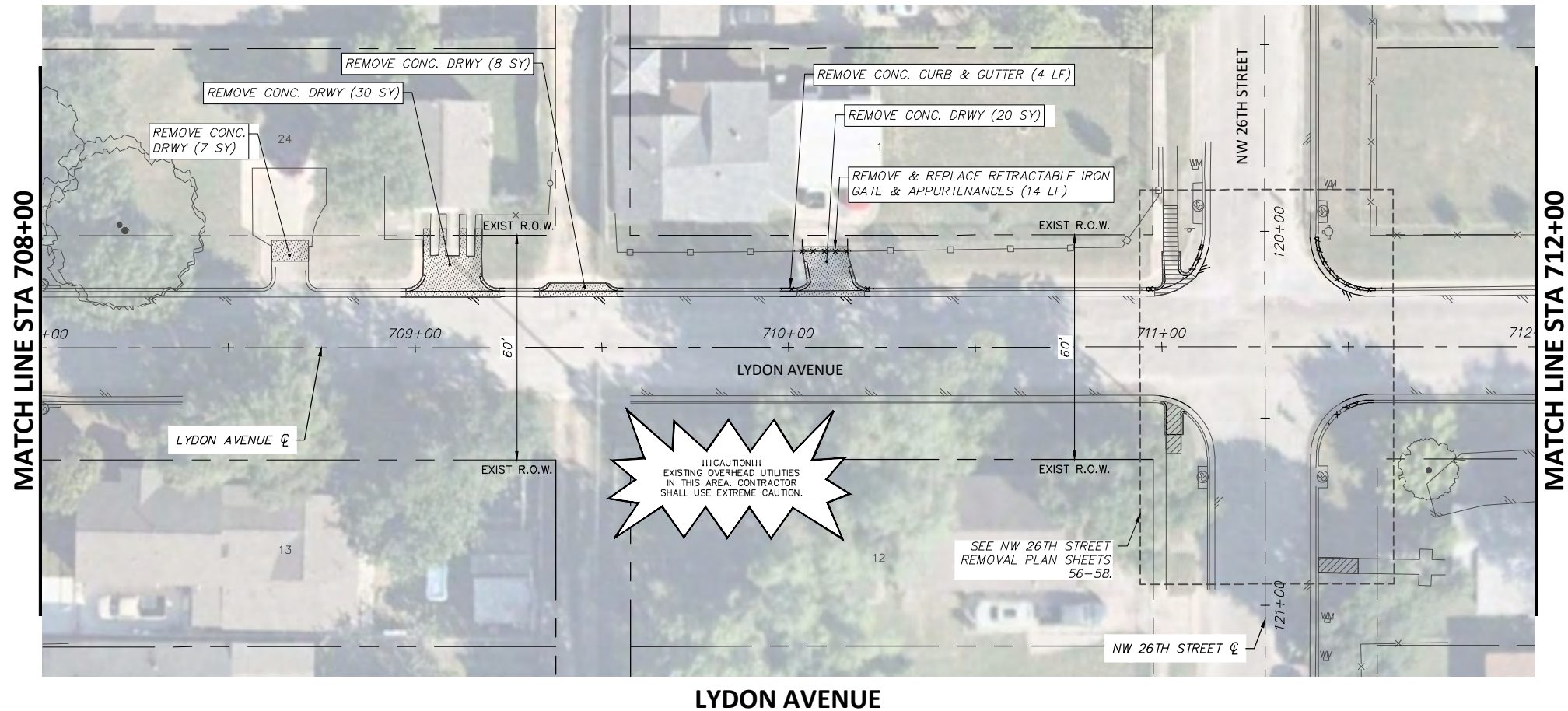
**LYDON AVENUE  
 REMOVALS AND UTILITY ADJUSTMENTS  
 STA. 700+00.00 TO STA. 708+00.00  
 WJ TURNER ELEMENTARY SCHOOL**

FED. RD. DIV. NO.	STATE	PROJECT NO.	HIGHWAY NO.		
6	TEXAS	STP 2021(929)TP	N/A		
STATE DISTRICT	COUNTY	CONTROL NO.	SECTION NO.	JOB NO.	SHEET NO.
FTW	TARRANT	0902	90	082	76

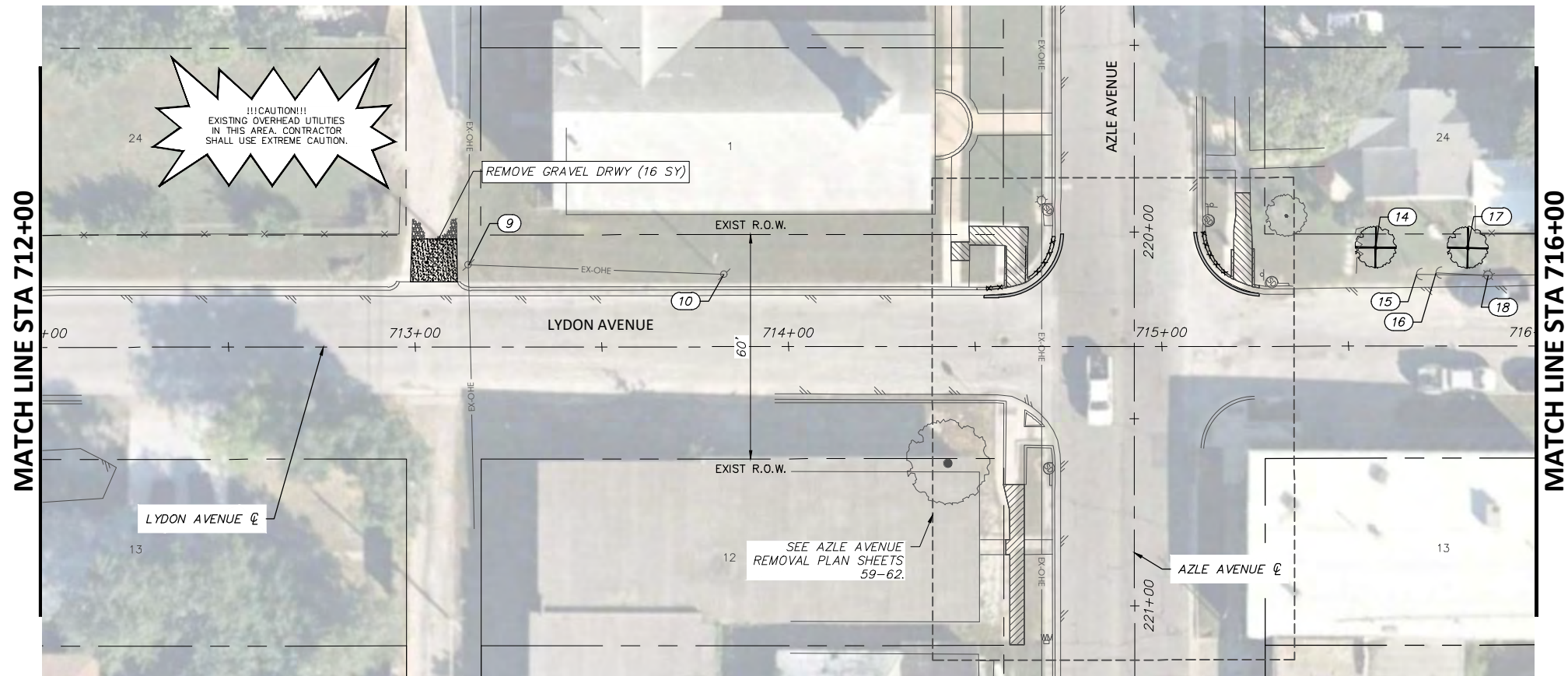
6/14/2021

FULL PATH: G:\Production\500\002600\2684\002\Civil\Drawings\Plot Sheets\RMV-PLAN WJT\LYDON AVE

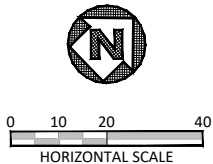
FILENAME: RMV-PL-LY.dwg  
 PLOTTED BY: LEE MONASTESSE  
 PLOTTED WITH: \_DWG TO PDF.PC3



LYDON AVENUE



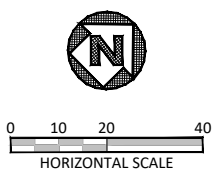
LYDON AVENUE



**NOTE:**  
 RETURN ALL REMOVED SIGNS TO TPW FIELD OPERATIONS SUPERVISOR SIDNEY RUTTER (SIDNEY.RUTTER@FORTWORTH.TEXAS.GOV) AT 5001 JAMES AVE, FORT WORTH, TX.  
 ITEMS NOT CALLED OUT FOR REMOVAL SHALL BE CLEARED & REMOVED AS REQUIRED AND DIRECTED BY THE ENGINEER. COST TO BE INCLUDED IN PRICE BID FOR SITE CLEARING. EXISTING SITE CONDITIONS MAY VARY FROM THOSE SHOWN ON THESE PLANS.

REMOVAL LEGEND	
	TREES TO BE REMOVED
	REMOVAL ITEMS
	ABANDONMENT ITEMS
	ASPHALT REMOVAL
	GRAVEL REMOVAL
	CONCRETE REMOVAL
	SIDEWALK/ RAMP REMOVAL
	CONCRETE DRIVE REMOVAL

EXISTING LYDON STREET OBSTRUCTION CONFLICTS			
NO.	STATION, OFFSET	DESCRIPTION	NOTE
9	713+14.26, 21.92 LT	OHE POLE	PROTECT
10	713+82.75, 19.37 LT	OHE POLE	PROTECT
14	715+57.30, 26.37 LT	TREE	REMOVE (CLUSTER)
15	715+68.27, 19.17 LT	GUY WIRE	PROTECT
16	715+73.52, 19.66 LT	GUY WIRE	PROTECT
17	715+81.93, 26.24 LT	TREE	REMOVE (CLUSTER)
18	715+87.46, 18.99 LT	LIGHT POLE	PROTECT



DATE	BY	REV	REVISION

**DUNAWAY** 550 Bailey Avenue  
 Suite 400  
 Fort Worth, TX 76107  
 (TX REG F-1114) 817-335-1121

**FORT WORTH**

PROJ NO. 101264 FILE NO. K-2630

Texas Department of Transportation  
 © 2020

2018 SAFE ROUTES TO SCHOOL IMPROVEMENTS

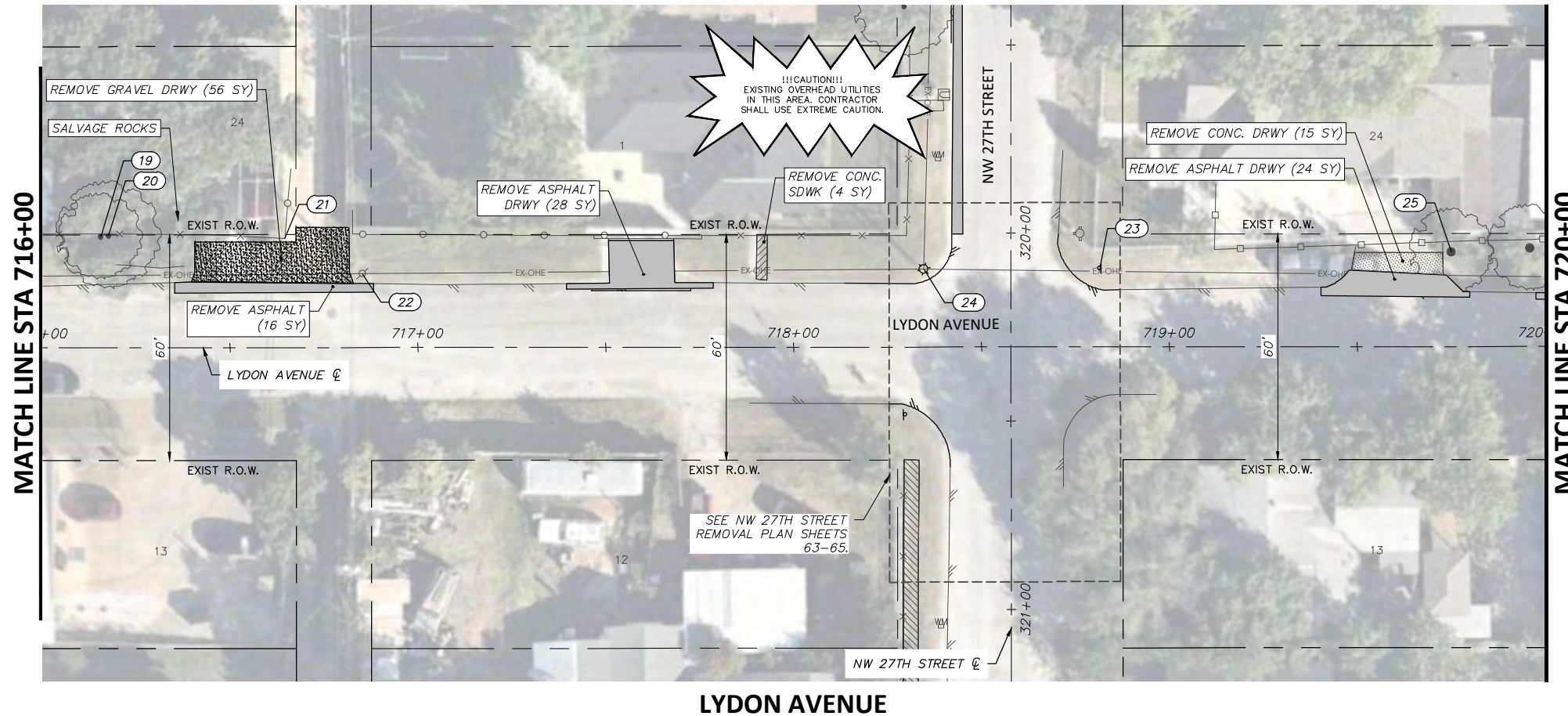
**LYDON AVENUE**  
 REMOVALS AND UTILITY ADJUSTMENTS  
 STA. 708+00.00 TO STA. 716+00.00  
 WJ TURNER ELEMENTARY SCHOOL

FED. RD. DIV. NO.	STATE	PROJECT NO.	HIGHWAY NO.		
6	TEXAS	STP 2021(929)TP	N/A		
STATE DISTRICT	COUNTY	CONTROL NO.	SECTION NO.	JOB NO.	SHEET NO.
FTW	TARRANT	0902	90	082	77

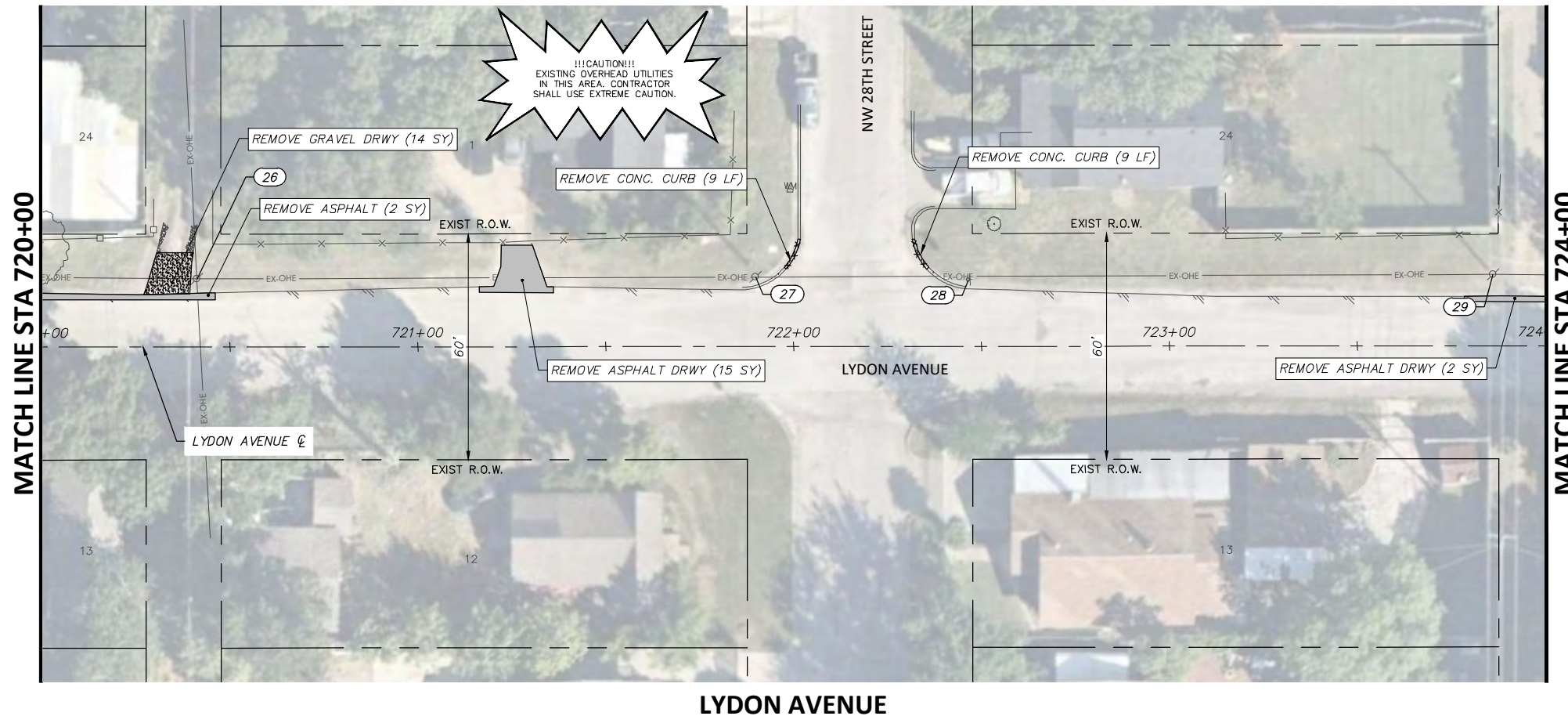
6/14/2021

FULL PATH: G:\Production\500\002600\2684\002\Civil\Drawings\Plot Sheets\RMV-PLAN WJT\LYDON AVE

FILENAME: RMV-PL-LY.dwg  
 PLOTTED BY: LEE MONASTESSE  
 PLOTTED WITH: \_DWG TO PDF.PC3



LYDON AVENUE



LYDON AVENUE

**NOTE:**  
 RETURN ALL REMOVED SIGNS TO TPW FIELD OPERATIONS SUPERVISOR SIDNEY RUTTER (SIDNEY.RUTTER@FORTWORTH.TEXAS.GOV) AT 5001 JAMES AVE, FORT WORTH, TX.  
 ITEMS NOT CALLED OUT FOR REMOVAL SHALL BE CLEARED & REMOVED AS REQUIRED AND DIRECTED BY THE ENGINEER. COST TO BE INCLUDED IN PRICE BID FOR SITE CLEARING. EXISTING SITE CONDITIONS MAY VARY FROM THOSE SHOWN ON THESE PLANS.

**REMOVAL LEGEND**

- TREES TO BE REMOVED
- REMOVAL ITEMS
- ABANDONMENT ITEMS
- ASPHALT REMOVAL
- GRAVEL REMOVAL
- CONCRETE REMOVAL
- SIDEWALK/ RAMP REMOVAL
- CONCRETE DRIVE REMOVAL

**EXISTING LYDON STREET OBSTRUCTION CONFLICTS**

NO.	☉ STATION, OFFSET	DESCRIPTION	NOTE
19	716+15.59, 29.39 LT	TREE	REMOVE
20	716+17.70, 29.67 LT	TREE	REMOVE
21	716+64.58, 29.06 LT	FENCE	PROTECT
22	716+85.26, 19.64 LT	OHE POLE	PROTECT
23	718+81.45, 20.99 LT	SIGN	REMOVE & RESET
24	718+34.66, 20.72 LT	LIGHT POLE	REMOVE & RESET
25	719+75.07, 25.09 LT	TREE	PROTECT
26	720+41.16, 18.08 LT	OHE POLE	PROTECT
27	721+89.88, 18.48 LT	OHE POLE	PROTECT
28	722+46.55, 17.64 LT	STOP SIGN	PROTECT
29	723+86.15, 19.01 LT	OHE POLE	PROTECT

**DUNAWAY** 550 Bailey Avenue  
 Suite 400  
 Fort Worth, TX 76107  
 (TX REG #1114) 817-335-1121

**FORT WORTH**

PROJ NO. 101264 FILE NO. K-2630

Texas Department of Transportation  
 © 2020

2018 SAFE ROUTES TO SCHOOL IMPROVEMENTS

**LYDON AVENUE**  
 REMOVALS AND UTILITY ADJUSTMENTS  
 STA. 716+00.00 TO STA. 724+00.00  
 WJ TURNER ELEMENTARY SCHOOL

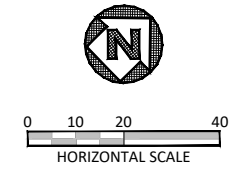
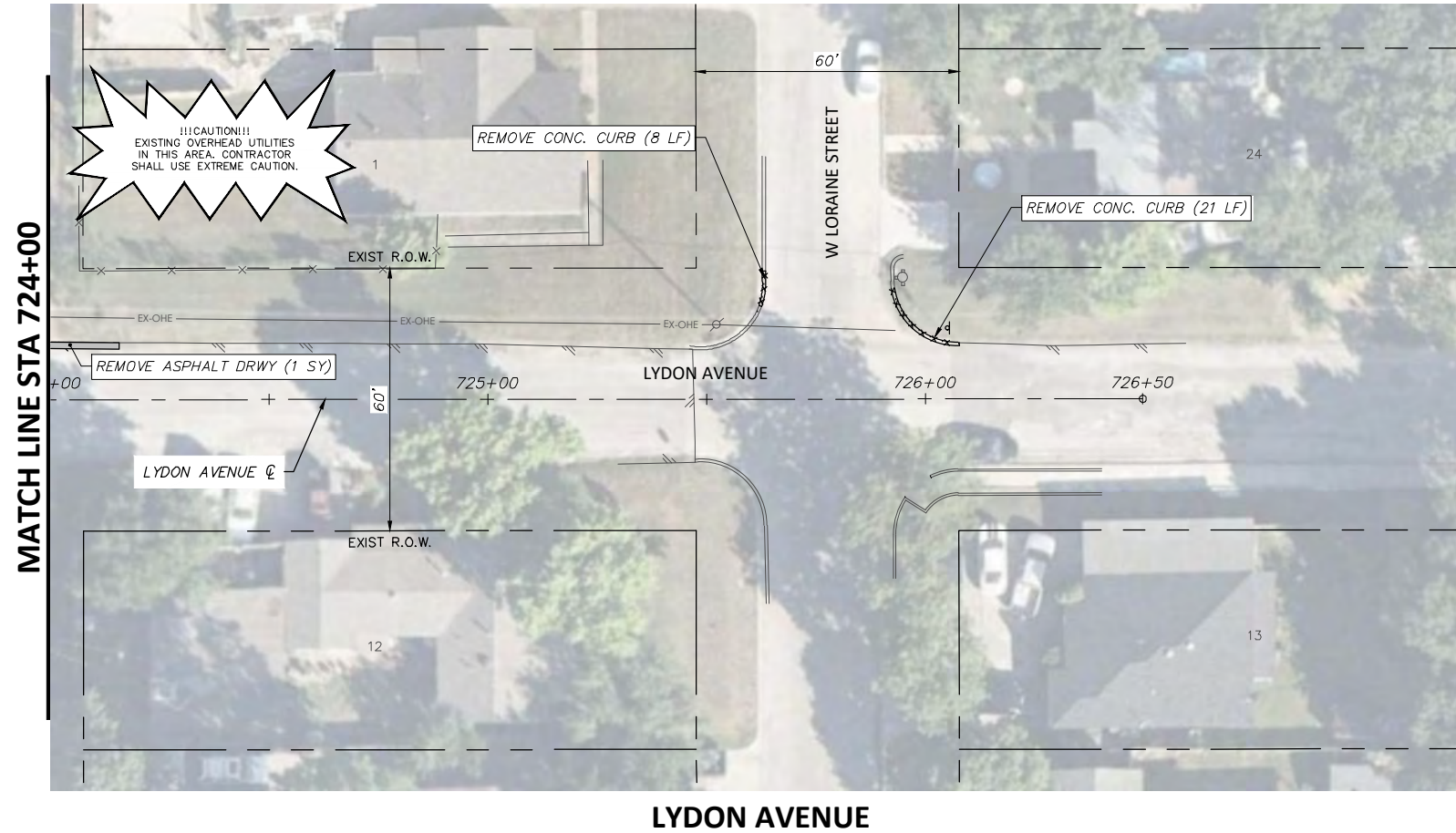
6/14/2021

JOSHUA WRIGHT  
 125733  
 LICENSED PROFESSIONAL ENGINEER

FED. RD. DIV. NO.	STATE	PROJECT NO.	HIGHWAY NO.		
6	TEXAS	STP 2021(929)TP	N/A		
STATE DISTRICT	COUNTY	CONTROL NO.	SECTION NO.	JOB NO.	SHEET NO.
FTW	TARRANT	0902	90	082	78

FULL PATH: G:\Production\500\002600\2684\002\Civil\Drawings\Plot Sheets\RMV - PLAN WJT\LYDON AVE

FILENAME: RMV-PL-LY.dwg  
 PLOTTED BY: LEE MONASTESSE  
 PLOTTED WITH: \_DWG TO PDF.PC3



**NOTE:**  
 RETURN ALL REMOVED SIGNS TO TPW FIELD OPERATIONS SUPERVISOR SIDNEY RUTTER (SIDNEY.RUTTER@FORTWORTHTEXAS.GOV) AT 5001 JAMES AVE, FORT WORTH, TX.  
 ITEMS NOT CALLED OUT FOR REMOVAL SHALL BE CLEARED & REMOVED AS REQUIRED AND DIRECTED BY THE ENGINEER. COST TO BE INCLUDED IN PRICE BID FOR SITE CLEARING. EXISTING SITE CONDITIONS MAY VARY FROM THOSE SHOWN ON THESE PLANS.

REMOVAL LEGEND	
	TREES TO BE REMOVED
	REMOVAL ITEMS
	ABANDONEMENT ITEMS
	ASPHALT REMOVAL
	GRAVEL REMOVAL
	CONCRETE REMOVAL
	SIDEWALK/ RAMP REMOVAL
	CONCRETE DRIVE REMOVAL

DATE	BY	REV	REVISION

PROJ NO. 101264 FILE NO. K-2630

Texas Department of Transportation

2018 SAFE ROUTES TO SCHOOL IMPROVEMENTS

**LYDON AVENUE  
 REMOVALS AND UTILITY ADJUSTMENTS  
 STA. 724+00.00 TO STA. 726+50.00  
 WJ TURNER ELEMENTARY SCHOOL**

FED. RD. DIV. NO.	STATE	PROJECT NO.		HIGHWAY NO.	
6	TEXAS	STP 2021(929)TP		N/A	
STATE DISTRICT	COUNTY	CONTROL NO.	SECTION NO.	JOB NO.	SHEET NO.
FTW	TARRANT	0902	90	082	79

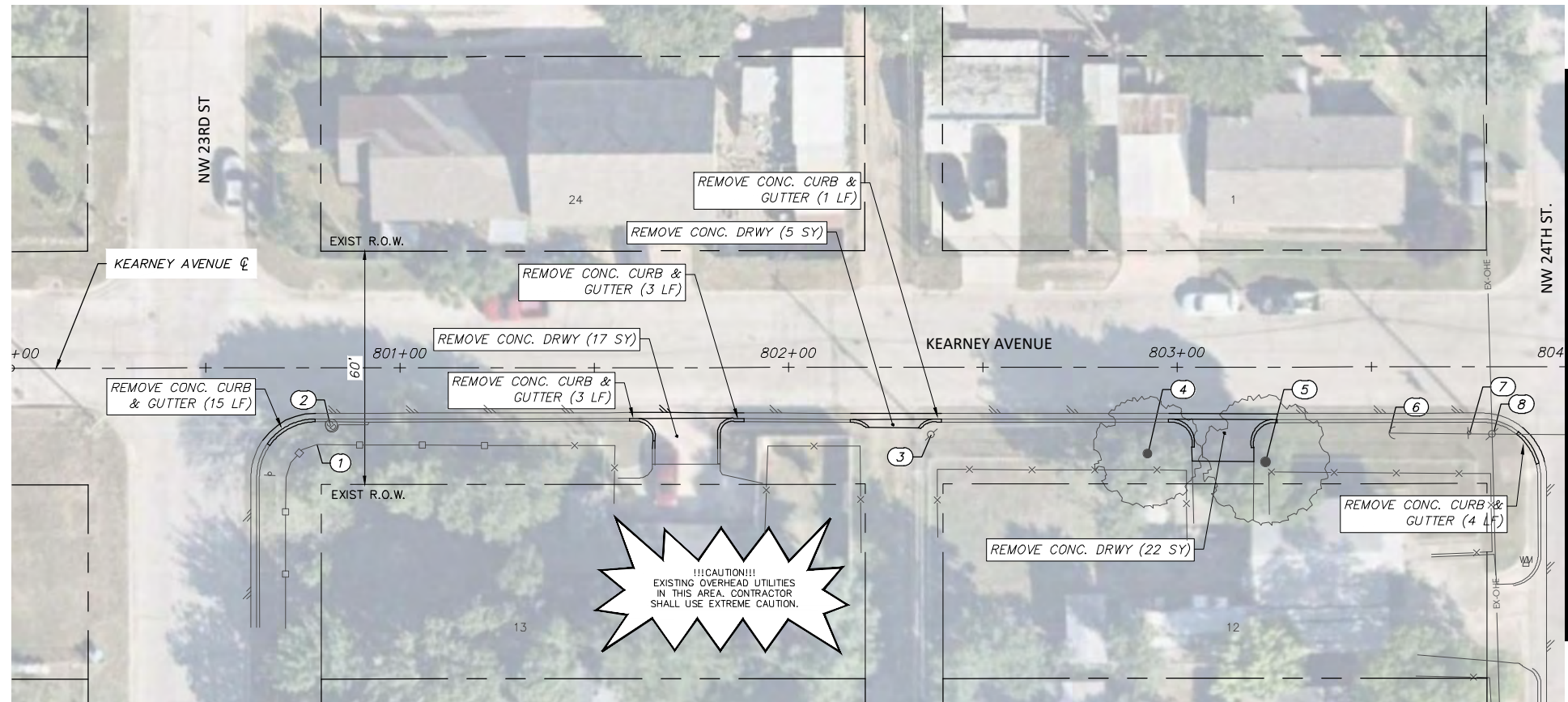
6/14/2021

*Joshua Wright*



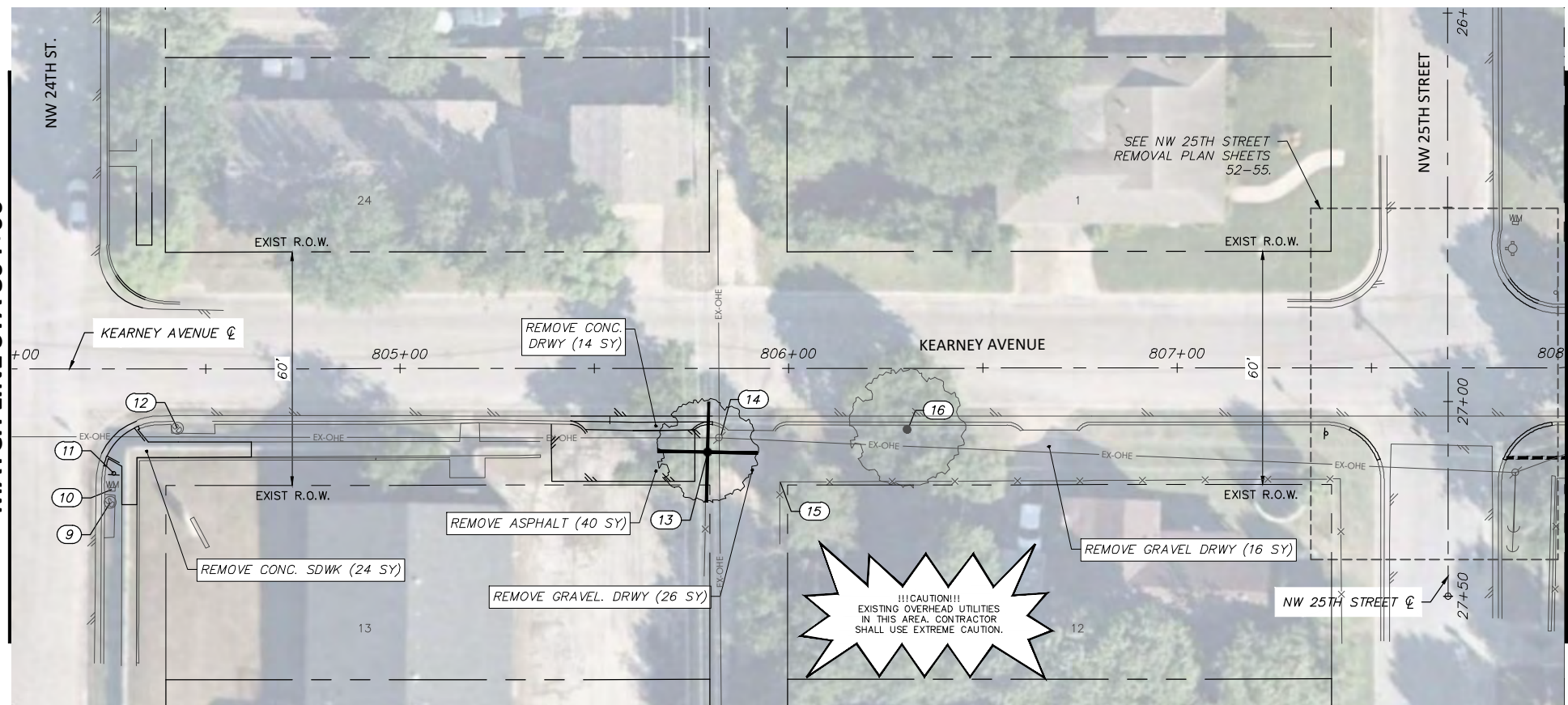
FULL PATH: G:\Production\500\002600\2684\002\Civil\Drawings\Plot Sheets\RMV-PLAN WJT\KEARNEY AVE

FILENAME: RMV-PL-KR.dwg  
 PLOTTED BY: LEE MONASTESSE  
 PLOTTED WITH: \_DWG TO PDF.PC3



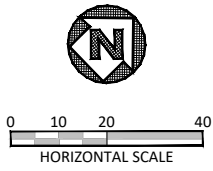
**KEARNEY AVENUE**

MATCH LINE STA 804+00



**KEARNEY AVENUE**

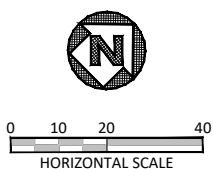
MATCH LINE STA 808+00



**NOTE:**  
 RETURN ALL REMOVED SIGNS TO TPW FIELD OPERATIONS SUPERVISOR SIDNEY RUTTER (SIDNEY.RUTTER@FORTWORTHTEXAS.GOV) AT 5001 JAMES AVE, FORT WORTH, TX.  
 ITEMS NOT CALLED OUT FOR REMOVAL SHALL BE CLEARED & REMOVED AS REQUIRED AND DIRECTED BY THE ENGINEER. COST TO BE INCLUDED IN PRICE BID FOR SITE CLEARING. EXISTING SITE CONDITIONS MAY VARY FROM THOSE SHOWN ON THESE PLANS.

REMOVAL LEGEND	
	TREES TO BE REMOVED
	REMOVAL ITEMS
	ABANDONEMENT ITEMS
	ASPHALT REMOVAL
	GRAVEL REMOVAL
	CONCRETE REMOVAL
	SIDEWALK/ RAMP REMOVAL
	CONCRETE DRIVE REMOVAL

EXISTING KEARNEY AVE OBSTRUCTION CONFLICTS			
NO.	STATION, OFFSET	DESCRIPTION	NOTE
1	800+78.67, 19.75 RT	FENCE	PROTECT
2	800+82.39, 14.77 RT	STORM MH	PROTECT
3	802+36.75, 17.28 RT	OHE POLE	PROTECT
4	802+92.48, 22.27 RT	TREE	PROTECT
5	803+22.82, 24.37 RT	TREE	PROTECT
6	803+54.70, 17.01 RT	GUY WIRE	PROTECT
7	803+75.30, 17.03 RT	STOP SIGN	PROTECT
8	803+81.10, 17.34 RT	OHE POLE	PROTECT
9	804+25.47, 34.43 RT	STORM DRAIN	PROTECT
10	804+25.93, 31.02 RT	WATER METER	PROTECT (ADJUST TO GRADE)
11	804+26.40, 26.86 RT	STOP SIGN	REMOVE & RESET
12	804+42.80, 15.34 RT	STORM DRAIN	PROTECT
13	805+79.23, 21.53 RT	TREE	REMOVE
14	805+82.21, 17.90 RT	OHE POLE	PROTECT
15	805+97.79, 29.22 RT	FENCE	PROTECT
16	806+30.63, 15.84 RT	TREE	PROTECT



DATE	BY	REV	REVISION

**DUNAWAY** 550 Bailey Avenue  
 Suite 400  
 Fort Worth, TX 76107  
 (TX REG #1114) 817-335-1121

**FORT WORTH**

PROJ NO. 101264 FILE NO. K-2630

Texas Department of Transportation  
 © 2020

2018 SAFE ROUTES TO SCHOOL IMPROVEMENTS

**KEARNEY AVENUE  
 REMOVALS AND UTILITY ADJUSTMENTS  
 STA. 800+00.00 TO STA. 808+00.00  
 WJ TURNER ELEMENTARY SCHOOL**

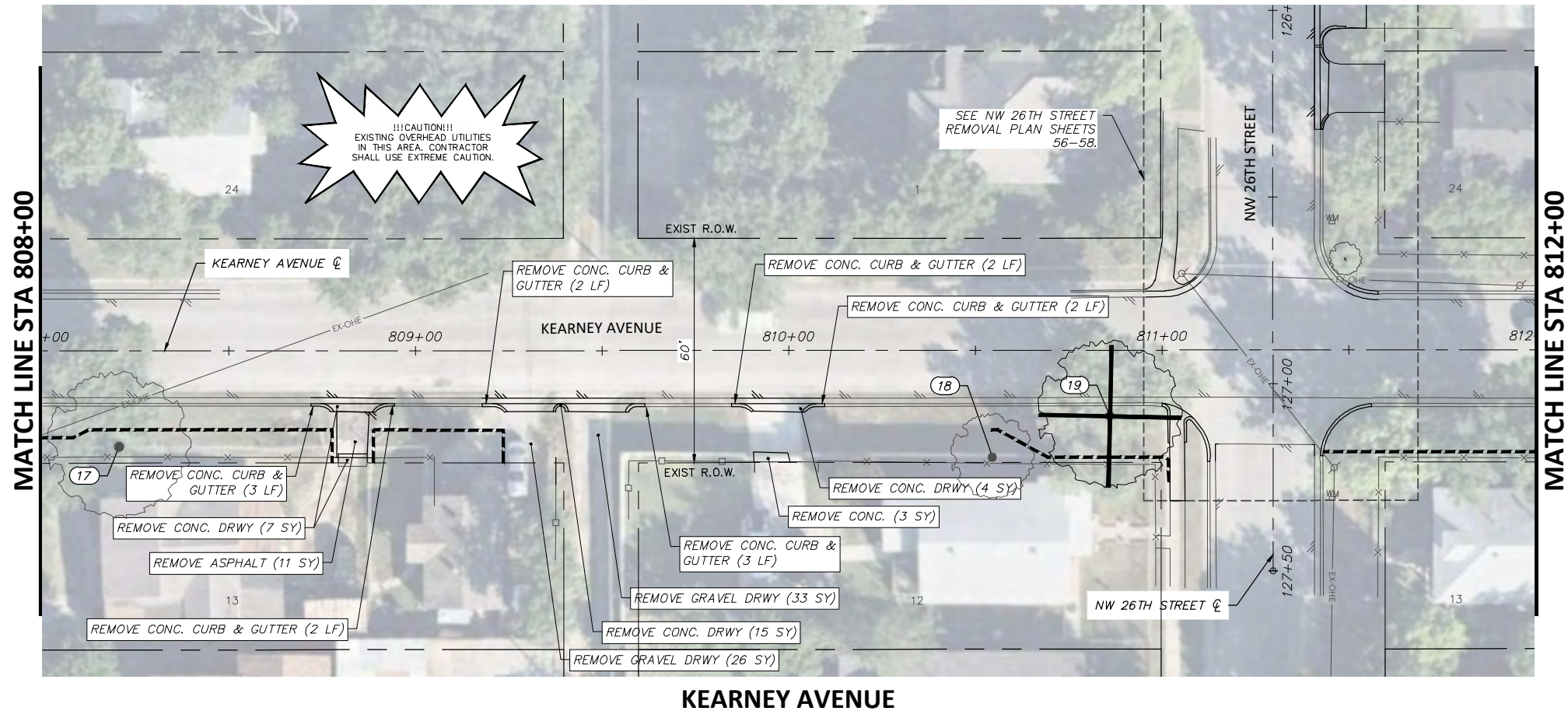
FED. RD. DIV. NO.	STATE	PROJECT NO.	HIGHWAY NO.		
6	TEXAS	STP 2021(929)TP	N/A		
STATE DISTRICT	COUNTY	CONTROL NO.	SECTION NO.	JOB NO.	SHEET NO.
FTW	TARRANT	0902	90	082	80

6/14/2021

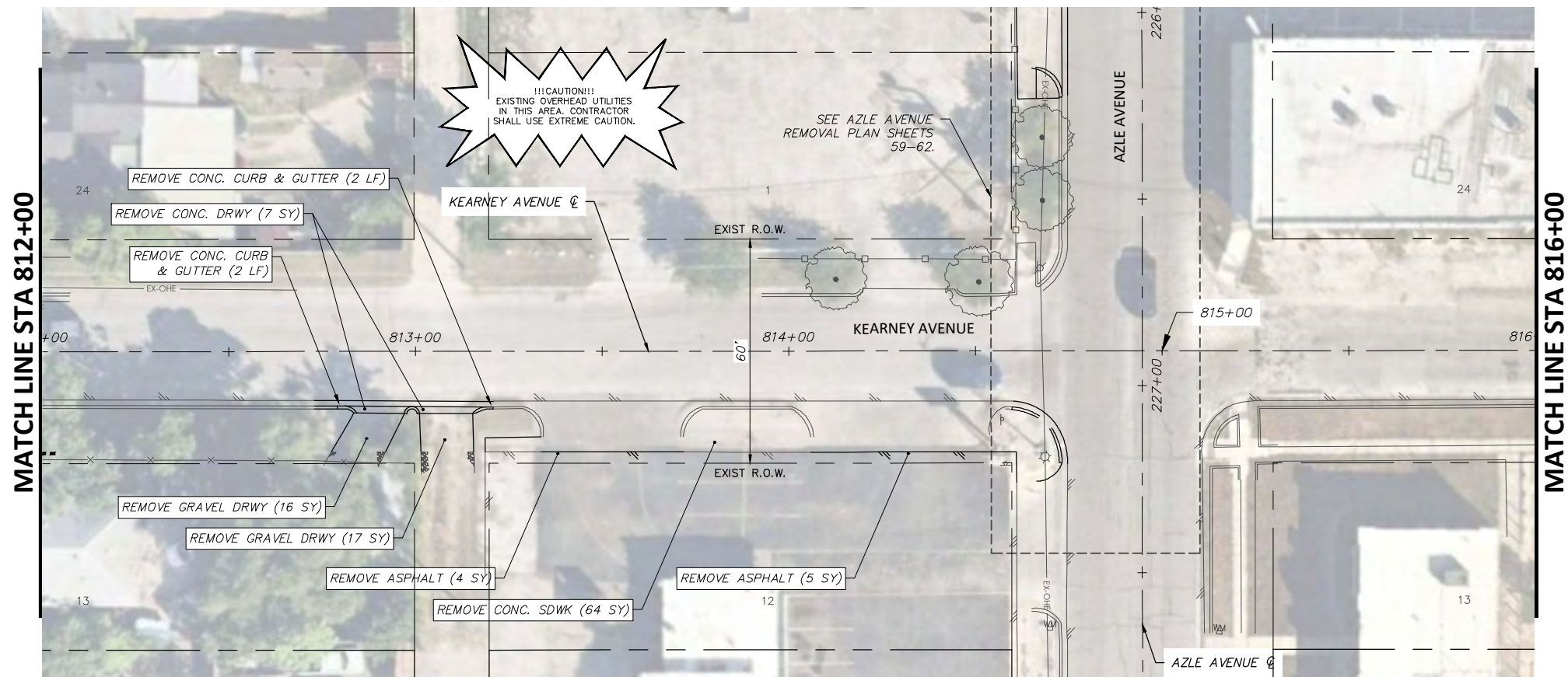
*Joshua Wright*

FULL PATH: G:\Production\500\002600\2684\002\Civil\Drawings\Plot Sheets\RMV-PLAN-WJT\KEARNEY AVE

FILENAME: RMV-PL-KR.dwg  
 PLOTTED BY: LEE MONASTESSE  
 PLOTTED WITH: \_DWG TO PDF.PC3



**KEARNEY AVENUE**



**KEARNEY AVENUE**

**NOTE:**  
 RETURN ALL REMOVED SIGNS TO TPW FIELD OPERATIONS SUPERVISOR SIDNEY RUTTER (SIDNEY.RUTTER@FORTWORTHTEXAS.GOV) AT 5001 JAMES AVE, FORT WORTH, TX.  
 ITEMS NOT CALLED OUT FOR REMOVAL SHALL BE CLEARED & REMOVED AS REQUIRED AND DIRECTED BY THE ENGINEER. COST TO BE INCLUDED IN PRICE BID FOR SITE CLEARING. EXISTING SITE CONDITIONS MAY VARY FROM THOSE SHOWN ON THESE PLANS.

**REMOVAL LEGEND**

- TREES TO BE REMOVED
- REMOVAL ITEMS
- ABANDONEMENT ITEMS
- ASPHALT REMOVAL
- GRAVEL REMOVAL
- CONCRETE REMOVAL
- SIDEWALK/ RAMP REMOVAL
- CONCRETE DRIVE REMOVAL

**EXISTING KEARNEY AVE OBSTRUCTION CONFLICTS**

NO.	STATION, OFFSET	DESCRIPTION	NOTE
17	808+20.68, 25.68 RT	TREE	PROTECT
18	810+54.63, 28.68 RT	TREE	PROTECT
19	810+86.06, 17.68 RT	TREE	REMOVE (30" CALIPER)

**DUNAWAY** 550 Bailey Avenue Suite 400 Fort Worth, TX 76107 817-335-1121 (TX REG F-1114)

**FORT WORTH**

PROJ NO. 101264 FILE NO. K-2630

Texas Department of Transportation © 2020

2018 SAFE ROUTES TO SCHOOL IMPROVEMENTS

**KEARNEY AVENUE REMOVALS AND UTILITY ADJUSTMENTS STA. 808+00.00 TO STA. 816+00.00 WJ TURNER ELEMENTARY SCHOOL**

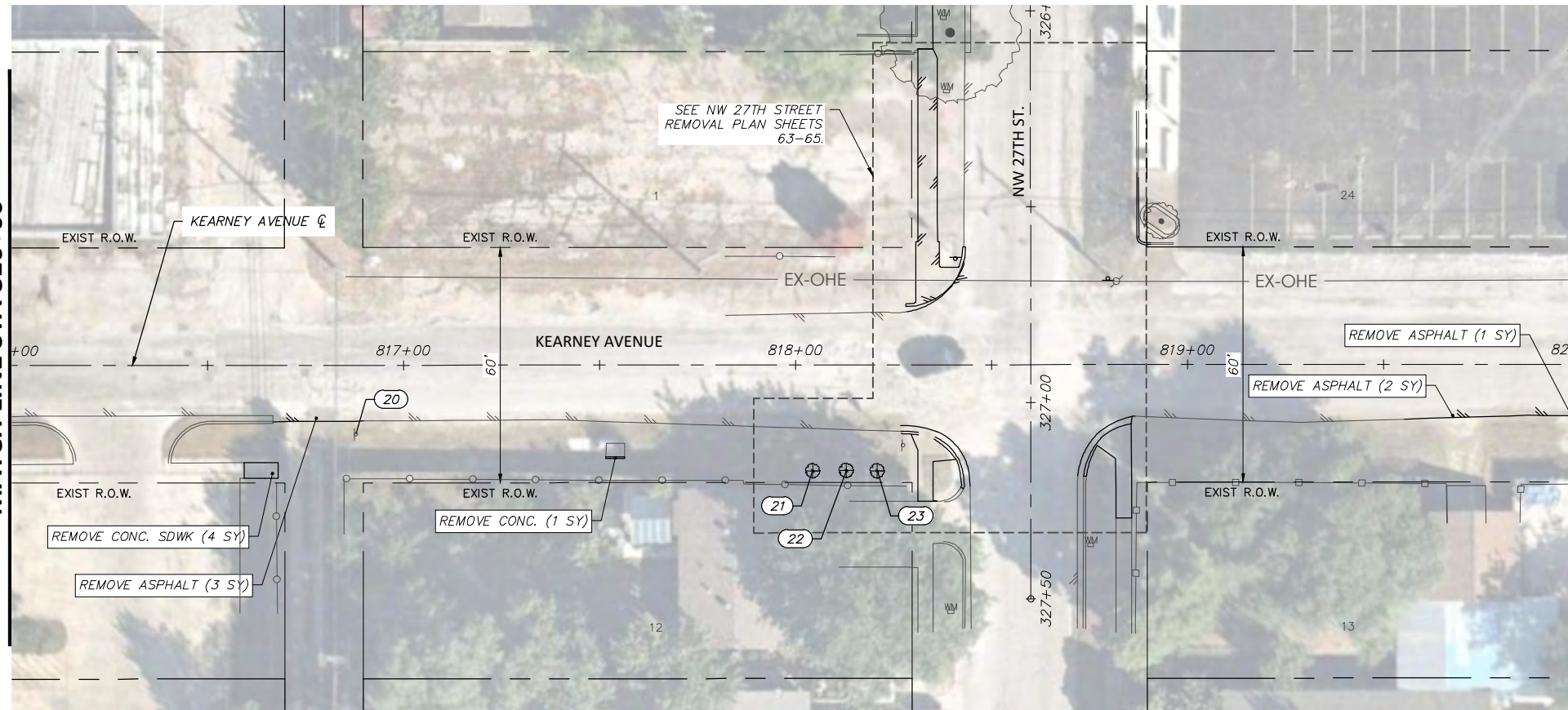
6/14/2021

FED. RD. DIV. NO.	STATE	PROJECT NO.	HIGHWAY NO.
6	TEXAS	STP 2021(929)TP	N/A
STATE DISTRICT	COUNTY	CONTROL NO.	SECTION NO.
FTW	TARRANT	0902	90
			JOB NO.
			082
			SHEET NO.
			81

FULL PATH: G:\Production\500\002600\2684\002\Civil\Drawings\Plot Sheets\RMV - PLAN WJT\KEARNEY AVE

FILENAME: RMV-PL-KR.dwg  
 PLOTTED BY: LEE MONASTESSE  
 PLOTTED WITH: \_DWG TO PDF.PC3

MATCH LINE STA 816+00



KEARNEY AVENUE

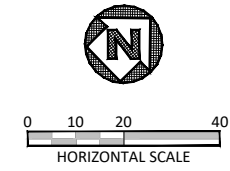
MATCH LINE STA 820+00

NOTE:

RETURN ALL REMOVED SIGNS TO TPW FIELD OPERATIONS SUPERVISOR SIDNEY RUTTER (SIDNEY.RUTTER@FORTWORTHTEXAS.GOV) AT 5001 JAMES AVE, FORT WORTH, TX.  
 ITEMS NOT CALLED OUT FOR REMOVAL SHALL BE CLEARED & REMOVED AS REQUIRED AND DIRECTED BY THE ENGINEER. COST TO BE INCLUDED IN PRICE BID FOR SITE CLEARING. EXISTING SITE CONDITIONS MAY VARY FROM THOSE SHOWN ON THESE PLANS.

REMOVAL LEGEND

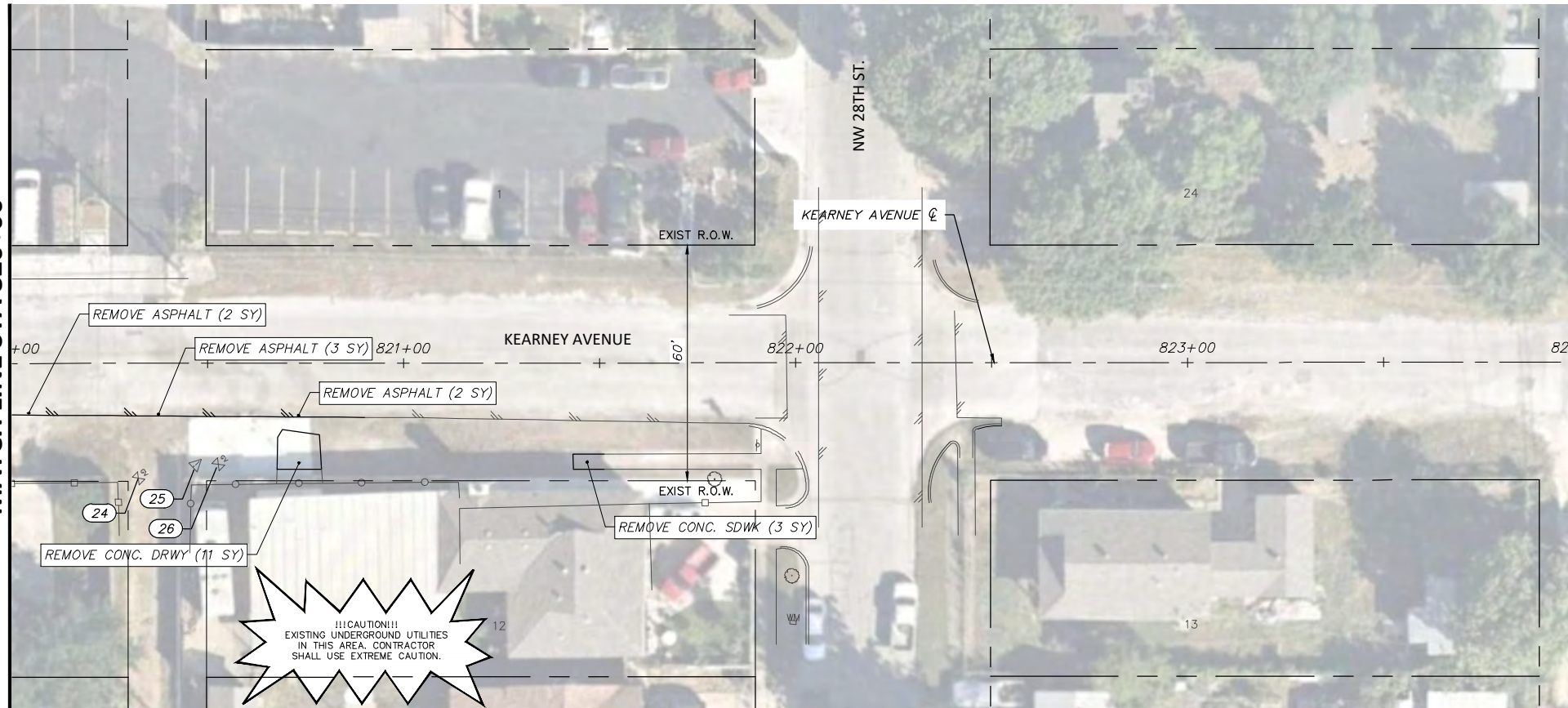
- TREES TO BE REMOVED
- REMOVAL ITEMS
- ABANDONEMENT ITEMS
- ASPHALT REMOVAL
- GRAVEL REMOVAL
- CONCRETE REMOVAL
- SIDEWALK/ RAMP REMOVAL
- CONCRETE DRIVE REMOVAL



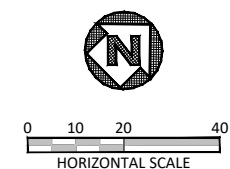
EXISTING KEARNEY AVE OBSTRUCTION CONFLICTS			
NO.	STATION, OFFSET	DESCRIPTION	NOTE
20	816+87.92, 17.60 RT	GUIDE SIGN	PROTECT
21	818+04.41, 27.05 RT	TREE	REMOVE (< 6" CALIPER)
22	818+12.98, 26.96 RT	TREE	REMOVE (< 6" CALIPER)
23	818+20.86, 27.08 RT	TREE	REMOVE (< 6" CALIPER)
24	820+32.41, 29.30 RT	GAS VALVE	PROTECT
25	820+47.11, 26.30 RT	GAS WARNING SIGN	REMOVE & RESET *
26	820+52.75, 25.75 RT	GAS VALVE	PROTECT (ADJUST TO GRADE) *

\*CONTRACTOR TO COORDINATE WITH ATMOS ENERGY WHEN ADJUSTING ANY GAS APPURTENANCES.

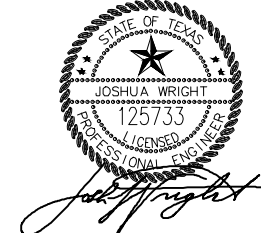
MATCH LINE STA 820+00



KEARNEY AVENUE



6/14/2021



DATE	BY	REV	REVISION

**DUNAWAY** 550 Bailey Avenue  
 Suite 400  
 Fort Worth, TX 76107  
 (TX REG. F-1114) 817-335-1121

**FORT WORTH**

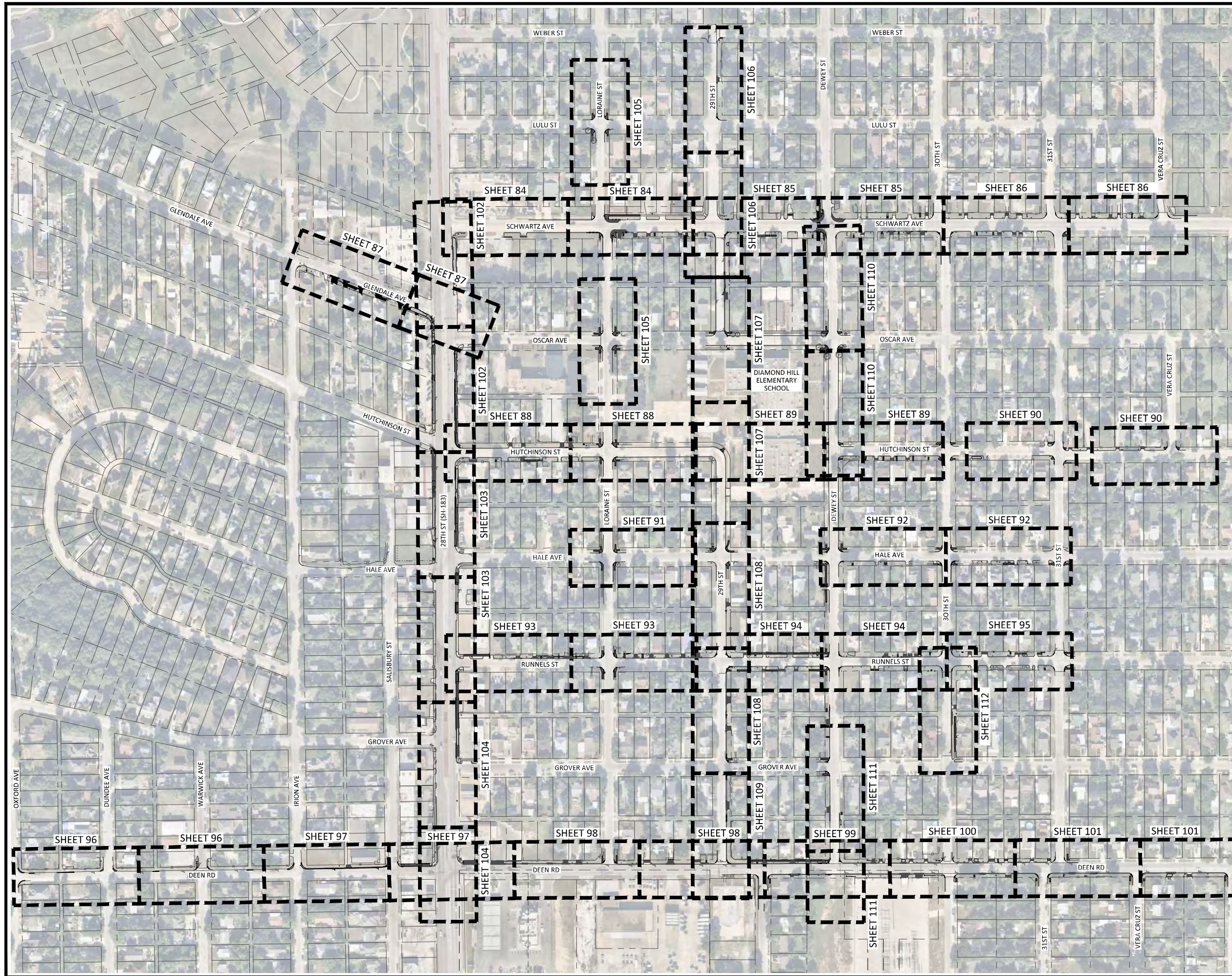
PROJ NO. 101264 FILE NO. K-2630

Texas Department of Transportation  
 © 2020

2018 SAFE ROUTES TO SCHOOL IMPROVEMENTS

**KEARNEY AVENUE  
 REMOVALS AND UTILITY ADJUSTMENTS  
 STA. 816+00.00 TO STA. 824+00.00  
 WJ TURNER ELEMENTARY SCHOOL**

FED. RD. DIV. NO.	STATE	PROJECT NO.	HIGHWAY NO.		
6	TEXAS	STP 2021(929)TP	N/A		
STATE DISTRICT	COUNTY	CONTROL NO.	SECTION NO.	JOB NO.	SHEET NO.
FTW	TARRANT	0902	90	082	82



PROJECT ENGINEER  
 JOSHUA WRIGHT  
 DATE 6/11/2021

DATE	BY	REV	REVISION

**DUNAWAY**  
 (TX REG #114)  
 550 Bailey Avenue  
 Suite 400  
 Fort Worth, TX 76107  
 817-335-1121

**FORT WORTH**  
 PROJ NO. 101264 FILE NO. K-2630

Texas Department of Transportation  
 © 2021

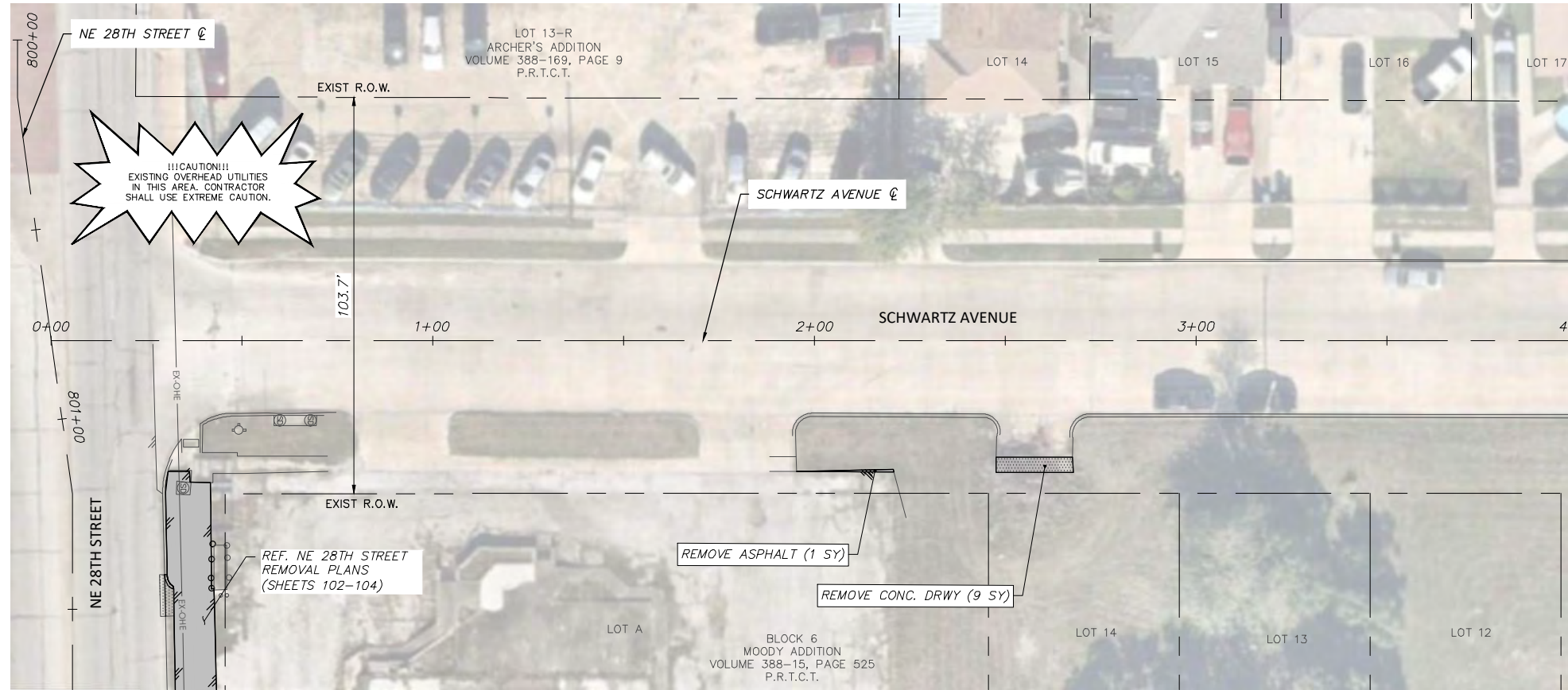
2018 SAFE ROUTES TO SCHOOL IMPROVEMENTS

**PROJECT REMOVAL KEY MAP  
 DIAMOND HILL**

FED. RD. DIV. NO.	STATE	PROJECT NO.	HIGHWAY NO.		
6	TEXAS	STP 2021(929)TP	VA		
STATE DISTRICT	COUNTY	CONTROL NO.	SECTION NO.	JOB NO.	SHEET NO.
FTW	TARRANT	0902	90	082	83

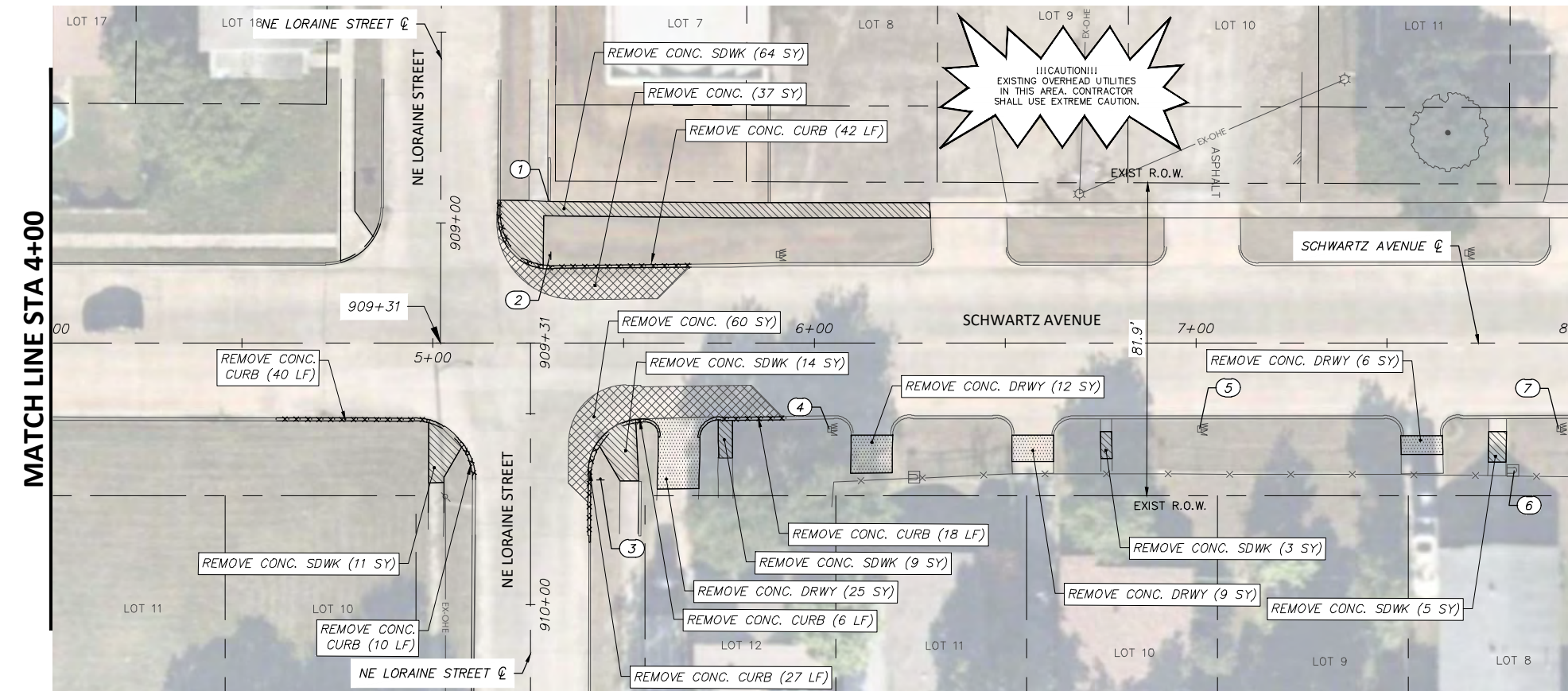
FULL PATH: G:\Production\500\002600\2684\002\Civil\Drawings\Plot Sheets\RMV-PLAN DH\SCHWARTZ AVE

FILENAME: RMV-PL-SZ.dwg  
 PLOTTED BY: LEE MONASTESSE  
 PLOTTED WITH: \_DWG TO PDF.PC3



**SCHWARTZ AVENUE**

MATCH LINE STA 4+00



**SCHWARTZ AVENUE**

MATCH LINE STA 8+00

NOTE:  
 RETURN ALL REMOVED SIGNS TO TPW FIELD OPERATIONS SUPERVISOR SIDNEY RUTTER (SIDNEY.RUTTER@FORTWORTH.TEXAS.GOV) AT 5001 JAMES AVE, FORT WORTH, TX.  
 ITEMS NOT CALLED OUT FOR REMOVAL SHALL BE CLEARED & REMOVED AS REQUIRED AND DIRECTED BY THE ENGINEER. COST TO BE INCLUDED IN PRICE BID FOR SITE CLEARING. EXISTING SITE CONDITIONS MAY VARY FROM THOSE SHOWN ON THESE PLANS.

**REMOVAL LEGEND**

- TREES TO BE REMOVED
- REMOVAL ITEMS
- ABANDONEMENT ITEMS
- ASPHALT REMOVAL
- GRAVEL REMOVAL
- CONCRETE REMOVAL
- SIDEWALK/ RAMP REMOVAL
- CONCRETE DRIVE REMOVAL

EXISTING SCHWARTZ AVE OBSTRUCTION CONFLICTS			
NO.	STATION, OFFSET	DESCRIPTION	NOTE
1	5+30.51, 37.15 LT	RETAINING WALL	PROTECT
2	5+30.64, 22.87 LT	CRIME WATCH SIGN	REMOVE & RESET
3	5+43.92, 35.64 RT	STOP SIGN	REMOVE & RESET
4	6+03.88, 22.59 RT	WATER METER	PROTECT (ADJUST TO GRADE)
5	7+00.90, 22.55 RT	WATER METER	PROTECT (ADJUST TO GRADE)
6	7+83.25, 33.41 RT	MAIL BOX	PROTECT
7	7+94.99, 22.51 RT	WATER METER	PROTECT (ADJUST TO GRADE)

DATE	BY	REV	REVISION

**DUNAWAY** 550 Bailey Avenue  
 Suite 400  
 Fort Worth, TX 76107  
 (TX REG #1114) 817-335-1121

**FORT WORTH**

PROJ NO. 101264 FILE NO. K-2630

Texas Department of Transportation  
 © 2021

2018 SAFE ROUTES TO SCHOOL IMPROVEMENTS

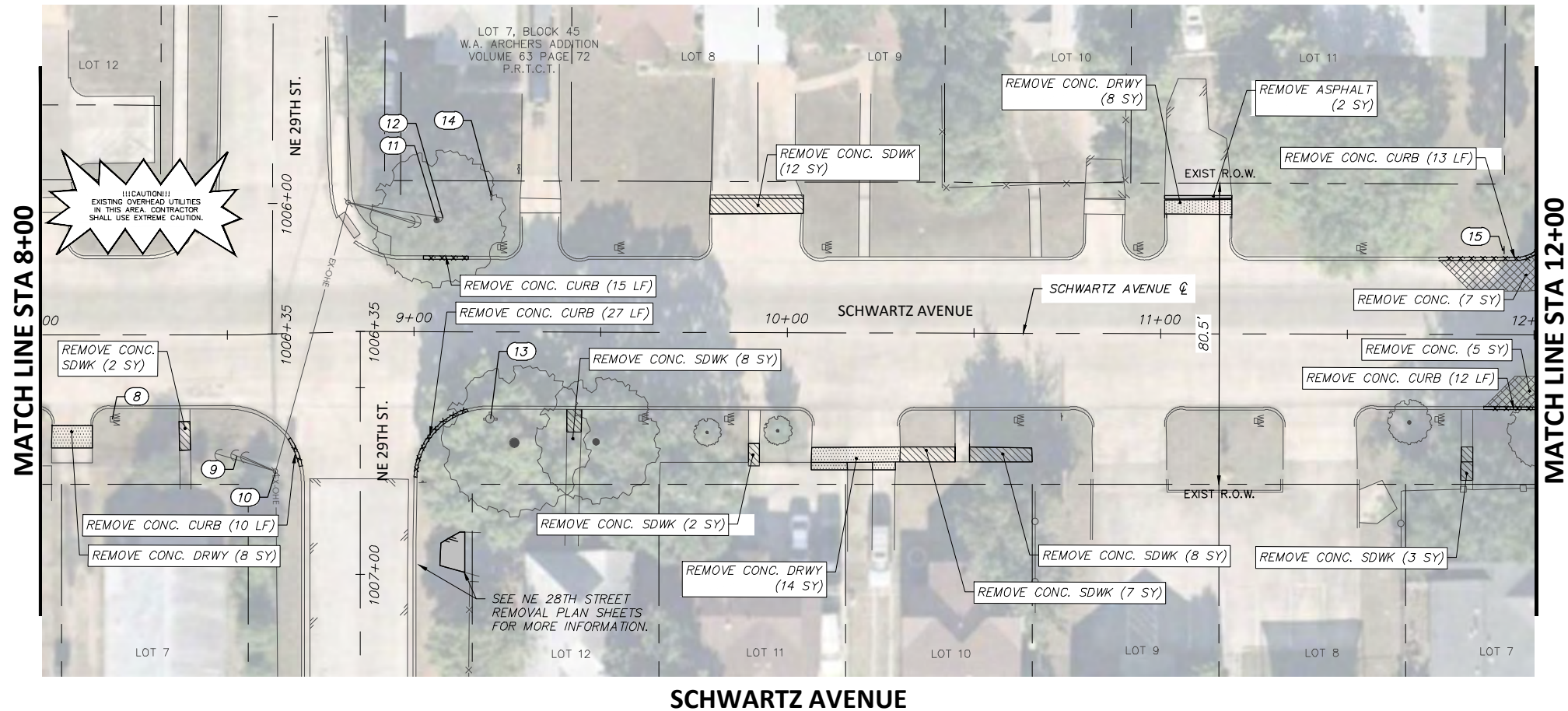
**SCHWARTZ AVENUE**  
**REMOVALS AND UTILITY ADJUSTMENTS**  
**STA. 0+00.00 TO STA. 8+00.00**  
**DIAMOND HILL ELEMENTARY SCHOOL**

FED. RD. DIV. NO.	STATE	PROJECT NO.	HIGHWAY NO.		
6	TEXAS	STP 2021(929)TP	N/A		
STATE DISTRICT	COUNTY	CONTROL NO.	SECTION NO.	JOB NO.	SHEET NO.
FTW	TARRANT	0902	90	082	84

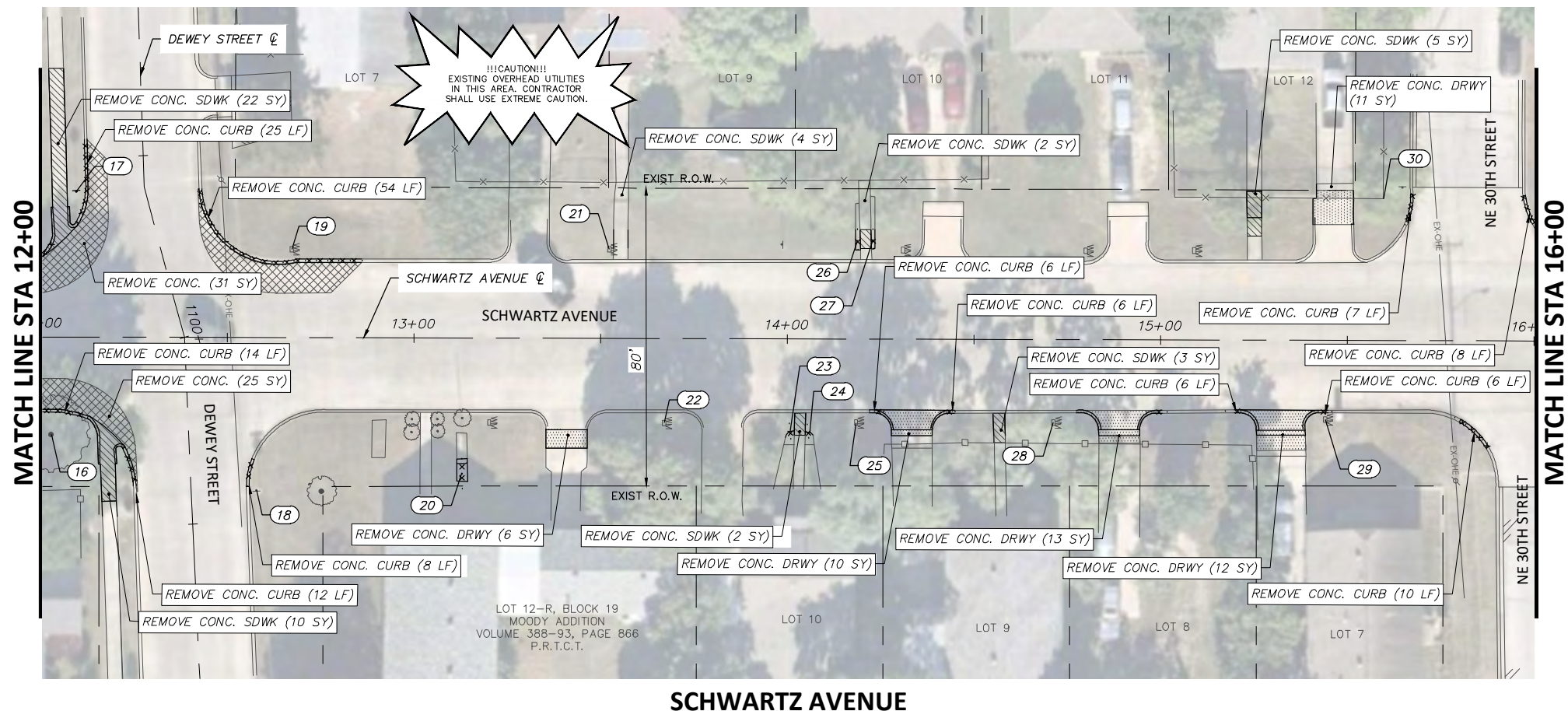
6/14/2021

FULL PATH: G:\Production\500\002600\2684\002\Civil\Drawings\Plot Sheets\RMVL-PLAN-DH\SCHWARTZ AVE

FILENAME: RMVL-PL-SZ.dwg  
PLOTTED BY: LEE MONASTESSE  
PLOTTED WITH: \_DWG TO PDF.PC3



**SCHWARTZ AVENUE**



**SCHWARTZ AVENUE**

**REMOVAL LEGEND**

- TREES TO BE REMOVED
- REMOVAL ITEMS
- ABANDONMENT ITEMS
- ASPHALT REMOVAL
- GRAVEL REMOVAL
- CONCRETE REMOVAL
- SIDEWALK/ RAMP REMOVAL
- CONCRETE DRIVE REMOVAL

**NOTE:**  
RETURN ALL REMOVED SIGNS TO TPW FIELD OPERATIONS SUPERVISOR SIDNEY RUTTER (SIDNEY.RUTTER@FORTWORTHTEXAS.GOV) AT 5001 JAMES AVE, FORT WORTH, TX.  
ITEMS NOT CALLED OUT FOR REMOVAL SHALL BE CLEARED & REMOVED AS REQUIRED AND DIRECTED BY THE ENGINEER. COST TO BE INCLUDED IN PRICE BID FOR SITE CLEARING. EXISTING SITE CONDITIONS MAY VARY FROM THOSE SHOWN ON THESE PLANS.

**EXISTING SCHWARTZ AVE OBSTRUCTION CONFLICTS**

NO.	STATION, OFFSET	DESCRIPTION	NOTE
8	8+19.08, 22.62 RT	WATER METER	PROTECT (ADJUST TO GRADE)
9	8+52.58, 32.49 RT	GUY WIRE (2)	PROTECT
10	8+61.87, 36.79 RT	OHE POLE	PROTECT
11	9+06.04, 29.78 LT	TREE	PROTECT
12	9+07.72, 30.49 LT	GUY WIRE	PROTECT
13	9+20.52, 23.32 RT	FIRE HYDRANT	PROTECT
14	9+20.64, 36.45 LT	IRRIGATION ITEM	PROTECT
15	11+91.67, 22.65 LT	SPEED LIMIT SIGN	REMOVE & RESET
16	12+02.90, 26.11 RT	TREE	PROTECT
17	12+09.45, 38.93 LT	STOP SIGN	REMOVE & RESET
18	12+57.92, 40.89 RT	STOP SIGN	PROTECT
19	12+67.17, 23.65 LT	WATER METER	PROTECT (ADJUST TO GRADE)
20	13+12.98, 36.03 RT	WOOD PLANTER	SALVAGE (SEE NOTE 1)
21	13+52.27, 23.77 LT	WATER METER	PROTECT (ADJUST TO GRADE)
22	13+67.09, 22.56 RT	WATER METER	PROTECT (ADJUST TO GRADE)
23	14+00.73, 25.53 RT	LANDSCAPING	SALVAGE (SEE NOTE 1)
24	14+05.98, 25.34 RT	LANDSCAPING	SALVAGE (SEE NOTE 1)
25	14+18.46, 22.36 RT	WATER METER	PROTECT (ADJUST TO GRADE)
26	14+18.80, 26.50 LT	PLANTED BUSHES	SALVAGE (SEE NOTE 1)
27	14+22.94, 26.80 LT	PLANTED BUSHES	SALVAGE (SEE NOTE 1)
28	14+71.38, 22.19 RT	WATER METER	PROTECT (ADJUST TO GRADE)
29	15+44.13, 21.19 RT	WATER METER	PROTECT (ADJUST TO GRADE)

\* SEE NEXT SHEET FOR REMOVAL ITEM 30.

**DUNAWAY** 550 Bailey Avenue Suite 400 Fort Worth, TX 76107 817-335-1121

**FORT WORTH**

PROJ NO. 101264 FILE NO. K-2630

Texas Department of Transportation © 2021

2018 SAFE ROUTES TO SCHOOL IMPROVEMENTS

**SCHWARTZ AVENUE**  
**REMOVALS AND UTILITY ADJUSTMENTS**  
**STA. 8+00.00 TO STA. 16+00.00**  
**DIAMOND HILL ELEMENTARY SCHOOL**

FED. RD. DIV. NO.	STATE	PROJECT NO.	HIGHWAY NO.
6	TEXAS	STP 2021(929)TP	N/A
STATE DISTRICT	COUNTY	CONTROL NO.	SECTION NO.
FTW	TARRANT	0902	90
			JOB NO.
			082
			SHEET NO.
			85

6/14/2021

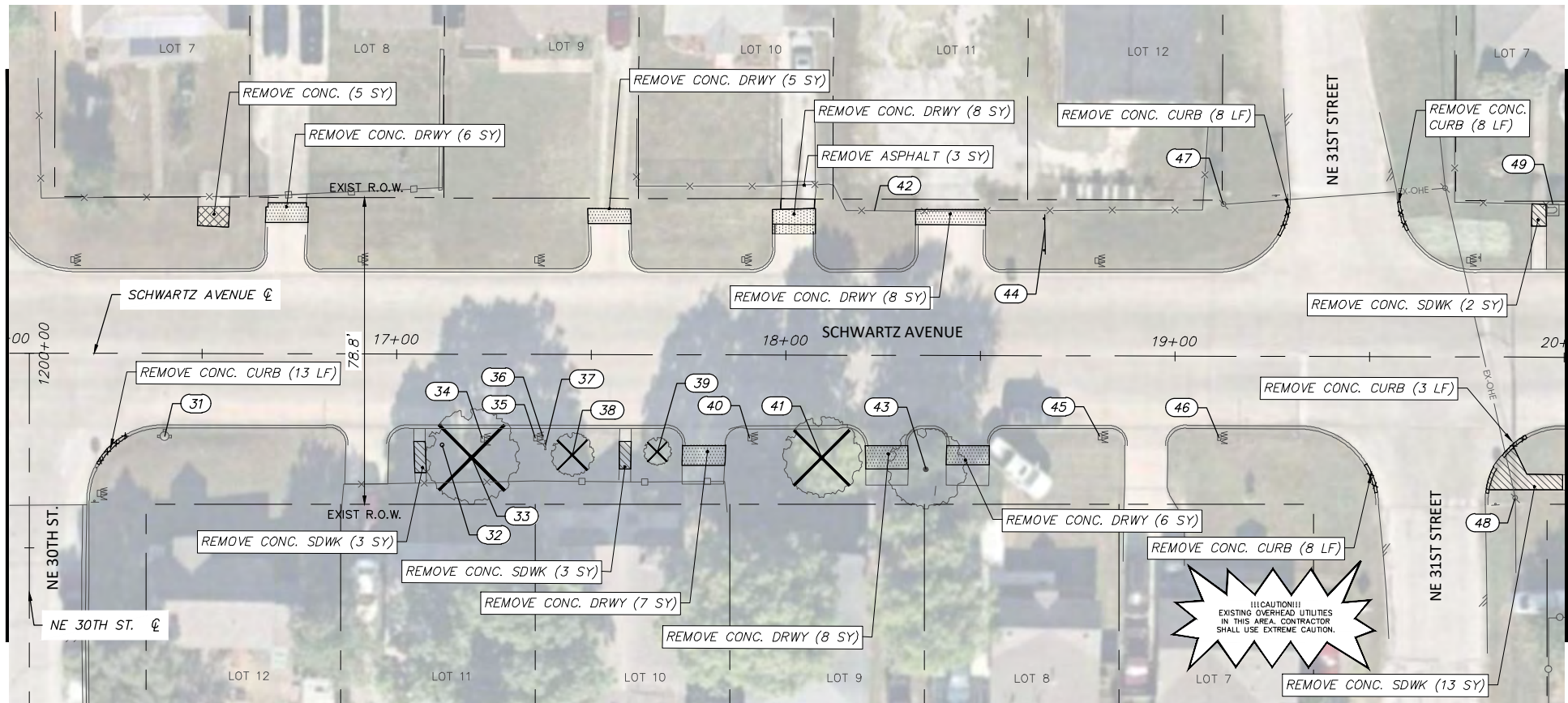
**JOSHUA WRIGHT**  
125733  
LICENSED PROFESSIONAL ENGINEER

FULL PATH: G:\Production\500\002600\2684\002\Civil\Drawings\Plot Sheets\RMV-PLAN DH\SCHWARTZ AVE

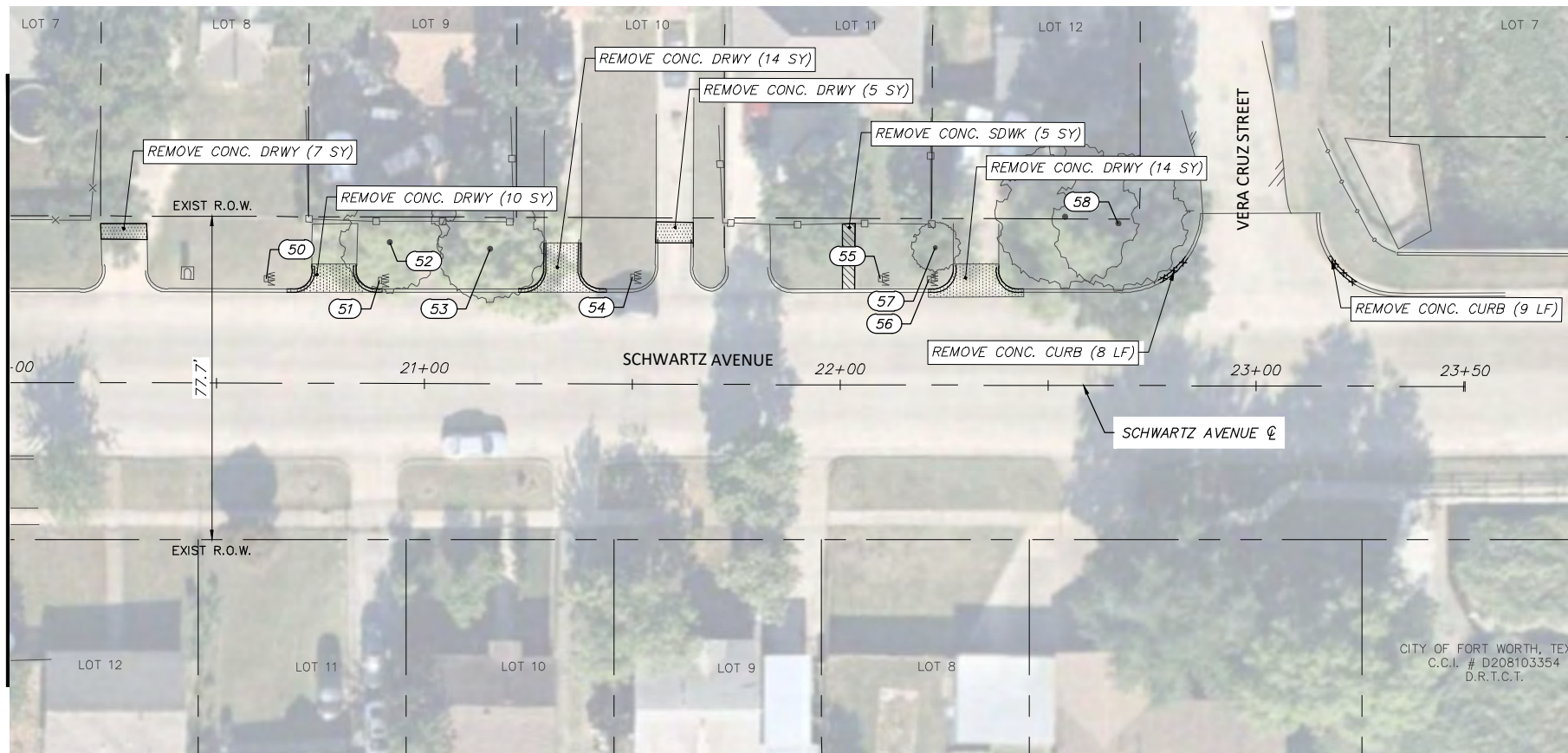
FILENAME: RMV-PL-SZ.dwg  
PLOTTED BY: LEE MONASTESSE  
PLOTTED WITH: \_DWG TO PDF.PC3

MATCH LINE STA 16+00

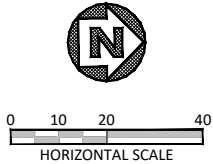
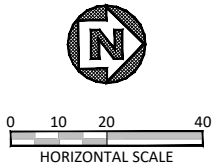
MATCH LINE STA 20+00



**SCHWARTZ AVENUE**



**SCHWARTZ AVENUE**



NOTE:

RETURN ALL REMOVED SIGNS TO TPW FIELD OPERATIONS SUPERVISOR SIDNEY RUTTER (SIDNEY.RUTTER@FORTWORTHTEXAS.GOV) AT 5001 JAMES AVE, FORT WORTH, TX.

ITEMS NOT CALLED OUT FOR REMOVAL SHALL BE CLEARED & REMOVED AS REQUIRED AND DIRECTED BY THE ENGINEER. COST TO BE INCLUDED IN PRICE BID FOR SITE CLEARING. EXISTING SITE CONDITIONS MAY VARY FROM THOSE SHOWN ON THESE PLANS.

**REMOVAL LEGEND**

- TREES TO BE REMOVED
- REMOVAL ITEMS
- ABANDONEMENT ITEMS
- ASPHALT REMOVAL
- GRAVEL REMOVAL
- CONCRETE REMOVAL
- SIDEWALK/ RAMP REMOVAL
- CONCRETE DRIVE REMOVAL

**EXISTING SCHWARTZ AVE OBSTRUCTION CONFLICTS**

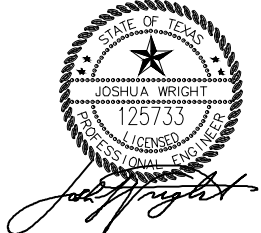
NO.	STATION, OFFSET	DESCRIPTION	NOTE
30	15+59.53, 37.90 LT	CHAIN LINK FENCE	PROTECT
31	16+40.39, 21.30 RT	FIRE HYDRANT	PROTECT
32	17+11.77, 23.38 RT	TREE STUMP	REMOVE
33	17+19.32, 26.50 RT	TREE	REMOVE (14" CALIPER)
34	17+22.16, 21.74 RT	WATER METER	PROTECT (ADJUST TO GRADE)
35	17+35.74, 21.47 RT	WATER METER	PROTECT (ADJUST TO GRADE)
36	17+37.62, 20.93 RT	TRAFFIC SIGN	REMOVE & RESET
37	17+38.25, 23.26 RT	IRRIGATION ITEM	PROTECT
38	17+45.18, 25.79 RT	TREE	REMOVE (2" CALIPER)
39	17+67.03, 24.89 RT	TREE	REMOVE (2" CALIPER)
40	17+90.78, 21.31 RT	WATER METER	PROTECT (ADJUST TO GRADE)
41	18+09.27, 26.34 RT	TREE	REMOVE (8" CALIPER)
42	18+22.61, 37.13 LT	CHAIN LINK FENCE	PROTECT
43	18+36.11, 29.25 RT	TREE	PROTECT
44	18+66.53, 32.53 LT	CHURCH SIGN	SALVAGE (SEE NOTE 1)
45	18+80.74, 20.74 RT	WATER METER	PROTECT (ADJUST TO GRADE)
46	19+11.43, 20.97 RT	WATER METER	PROTECT
48	19+87.55, 36.22 RT	OHE POLE	PROTECT
49	19+97.05, 39.27 LT	MAIL BOX	PROTECT
50	20+61.89, 25.11 LT	WATER METER	PROTECT (ADJUST TO GRADE)
51	20+89.28, 24.80 LT	WATER METER	PROTECT (ADJUST TO GRADE)
52	20+91.62, 33.90 LT	TREE	PROTECT
53	21+15.74, 32.42 LT	TREE	PROTECT

\* 54 THRU 56 - WATER METER PROTECT (ADJUST TO GRADE)  
57 THRU 58 - TREE PROTECT

NOTE:

- ITEMS TO BE SALVAGED IN COORDINATION WITH PROPERTY OWNER.

6/14/2021



DATE	BY	REV	REVISION

**DUNAWAY** (TX REG. F-1114) 550 Bailey Avenue Suite 400 Fort Worth, TX 76107 817-335-1121

**FORT WORTH** PROJ NO. 101264 FILE NO. K-2630

Texas Department of Transportation © 2021

2018 SAFE ROUTES TO SCHOOL IMPROVEMENTS

**SCHWARTZ AVENUE  
REMOVALS AND UTILITY ADJUSTMENTS  
STA. 16+00.00 TO STA. 23+50.00  
DIAMOND HILL ELEMENTARY SCHOOL**

FED. RD. DIV. NO.	STATE	PROJECT NO.	HIGHWAY NO.		
6	TEXAS	STP 2021(929)TP	N/A		
STATE DISTRICT	COUNTY	CONTROL NO.	SECTION NO.	JOB NO.	SHEET NO.
FTW	TARRANT	0902	90	082	86