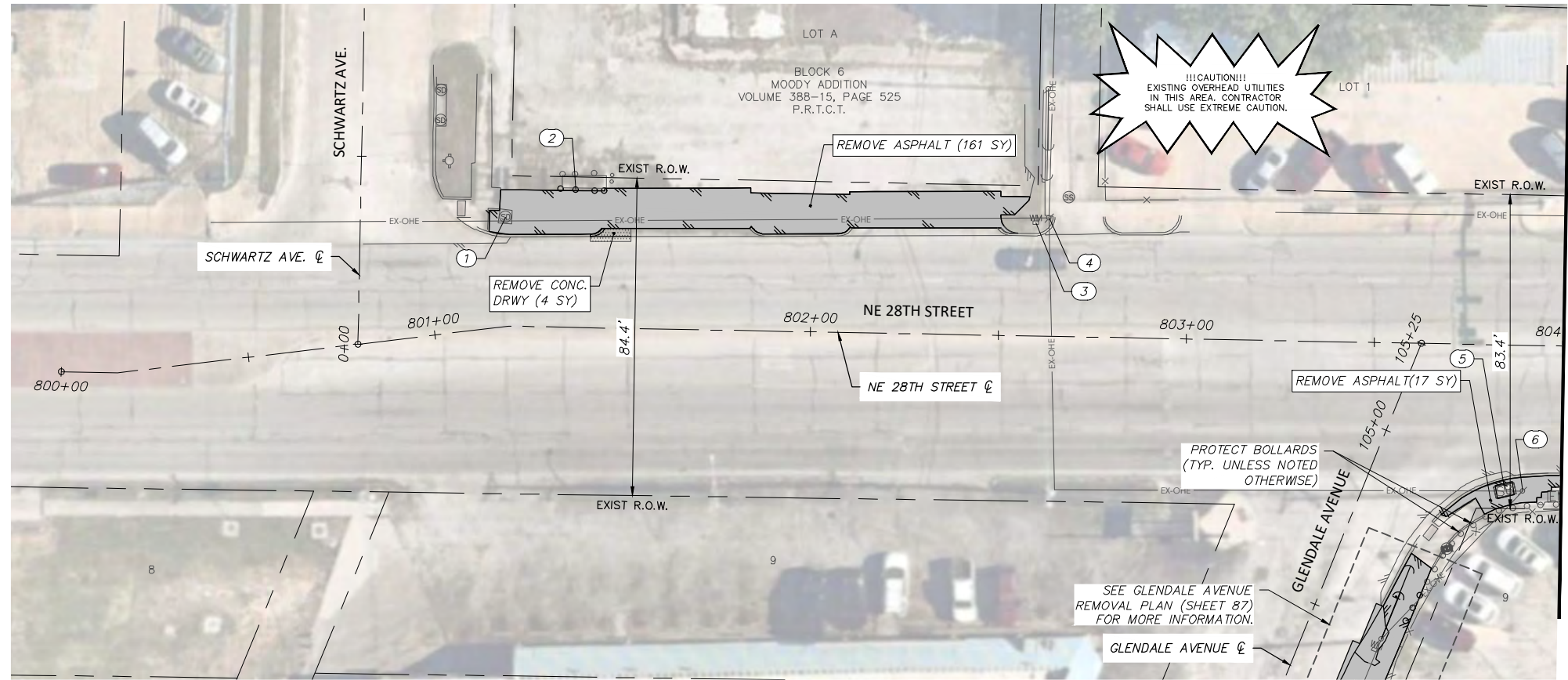


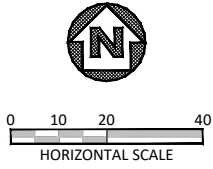
FULL PATH: G:\Production\500\002600\2684\002\Civil\Drawings\Plot Sheets\RMVL-PLAN DR\NE 28TH ST

FILENAME: RMVL-PL-28.dwg  
 PLOTTED BY: LEE MONASTESSE  
 PLOTTED WITH: \_DWG TO PDF.PC3



**NE 28TH STREET**

MATCH LINE STA 804+00



NOTE:

RETURN ALL REMOVED SIGNS TO TPW FIELD OPERATIONS SUPERVISOR SIDNEY RUTTER (SIDNEY.RUTTER@FORTWORTH.TEXAS.GOV) AT 5001 JAMES AVE, FORT WORTH, TX.

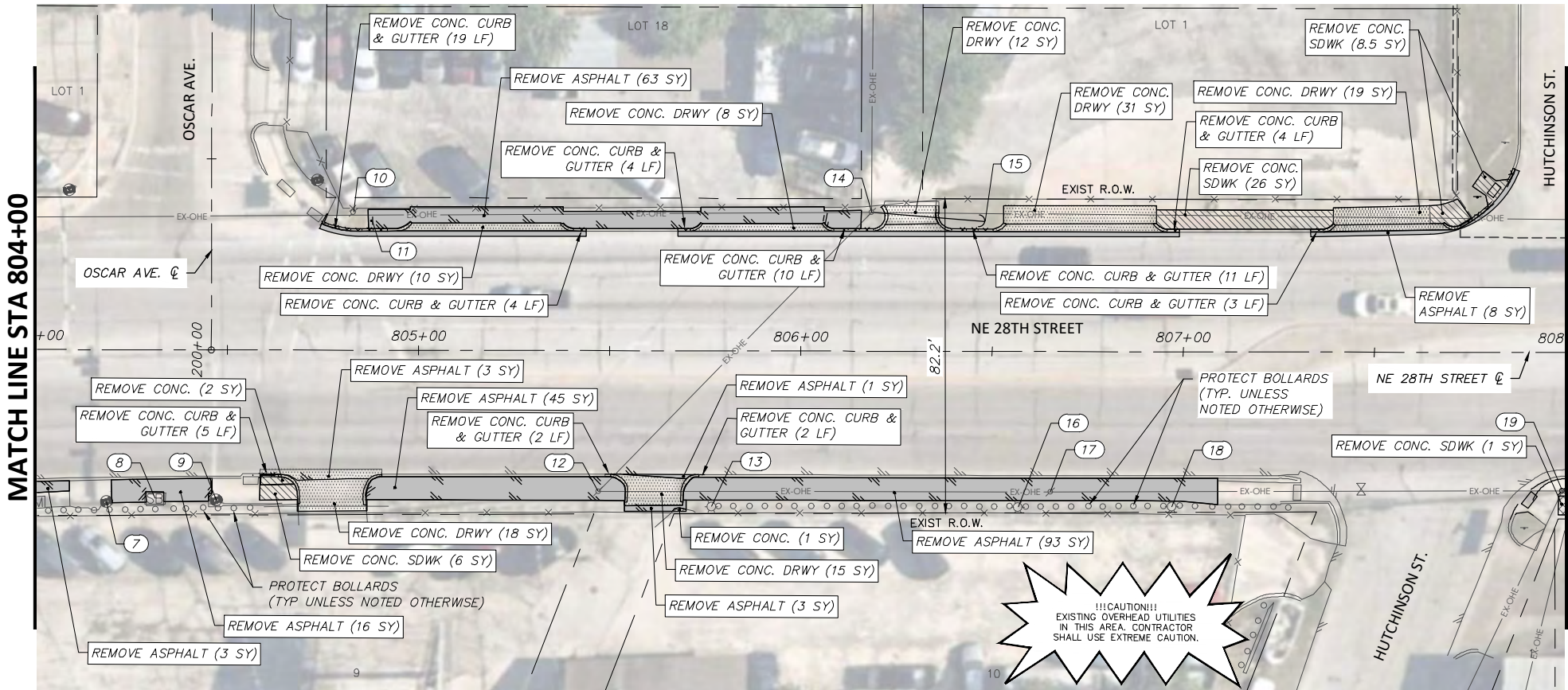
ITEMS NOT CALLED OUT FOR REMOVAL SHALL BE CLEARED & REMOVED AS REQUIRED AND DIRECTED BY THE ENGINEER. COST TO BE INCLUDED IN PRICE BID FOR SITE CLEARING. EXISTING SITE CONDITIONS MAY VARY FROM THOSE SHOWN ON THESE PLANS.

**REMOVAL LEGEND**

- TREES TO BE REMOVED
- REMOVAL ITEMS
- ABANDONEMENT ITEMS
- ASPHALT REMOVAL
- GRAVEL REMOVAL
- CONCRETE REMOVAL
- SIDEWALK/ RAMP REMOVAL
- CONCRETE DRIVE REMOVAL

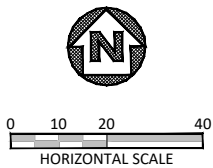
**EXISTING 28TH ST. OBSTRUCTION CONFLICTS**

NO.	STATION, OFFSET	DESCRIPTION	NOTE
1	801+19.75, 29.07 LT	SSMH	PROTECT
2	801+36.96, 36.59 LT	BOLLARD (4)	REMOVE
3	802+59.34, 30.15 LT	WATER METER	PROTECT
4	802+62.88, 31.42 LT	OHE POLE	PROTECT
5	803+85.47, 38.66 RT	SIGNAL BOX	PROTECT
6	803+90.14, 38.81 RT	OHE POLE	PROTECT
7	804+18.40, 39.74 RT	SIGNAL POLE	PROTECT
8	804+31.11, 38.91 RT	SIGNAL BOX	PROTECT
9	804+47.15, 39.33 RT	SIGNAL POLE	PROTECT
10	804+82.86, 36.08 LT	OHE POLE	PROTECT
11	804+87.87, 33.81 LT	CROSS WALK SIGN	REMOVE AND RESET
12	805+47.02, 36.79 RT	OHE POLE	PROTECT
13	805+76.62, 40.77 RT	LIGHT POLE	PROTECT
14	806+18.40, 36.35 LT	OHE POLE	PROTECT
15	806+48.05, 33.95 LT	GUY WIRE	PROTECT
16	806+56.84, 40.77 RT	LIGHT POLE	PROTECT
17	806+65.31, 36.70 RT	OHE POLE	PROTECT
18	806+97.02, 40.60 RT	LIGHT POLE	PROTECT
19	807+99.27, 36.17 RT	OHE POLE	PROTECT

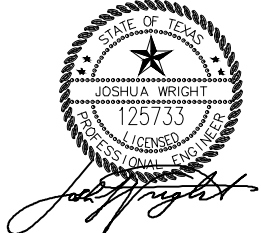


**NE 28TH STREET**

MATCH LINE STA 808+00



6/14/2021



DATE	BY	REV	REVISION

550 Bailey Avenue  
Suite 400  
Fort Worth, TX 76107  
817-335-1121

PROJ NO. 101264 FILE NO. K-2630

Texas Department of Transportation  
© 2021

2018 SAFE ROUTES TO SCHOOL IMPROVEMENTS

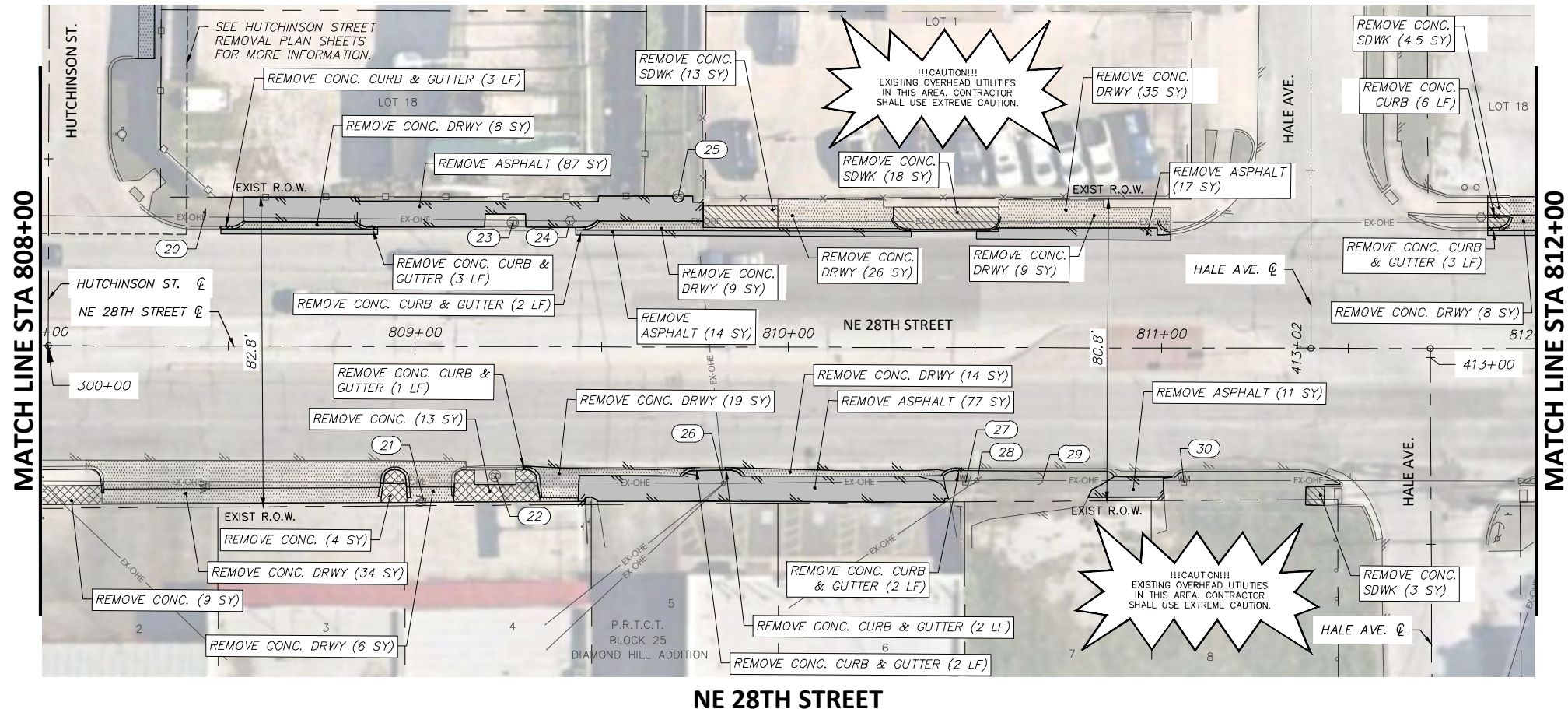
**NE 28TH STREET**  
**REMOVALS AND UTILITY ADJUSTMENTS**  
**STA. 800+00.00 TO STA. 808+00.00**  
**DIAMOND HILL ELEMENTARY SCHOOL**

FED. RD. DIV. NO.	STATE	PROJECT NO.	HIGHWAY NO.		
6	TEXAS	STP 2021(929)TP	N/A		
STATE DISTRICT	COUNTY	CONTROL NO.	SECTION NO.	JOB NO.	SHEET NO.
FTW	TARRANT	0902	90	082	<b>102</b>

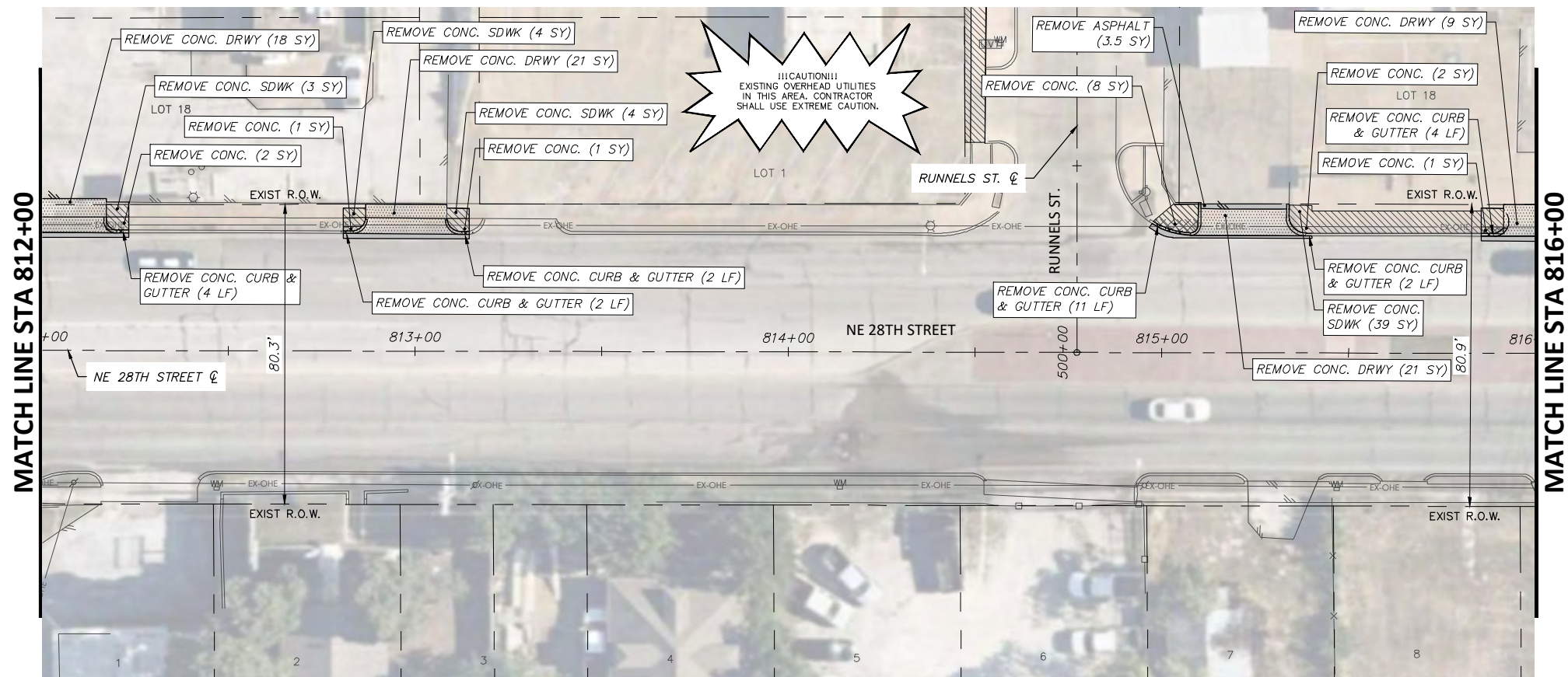


FULL PATH: G:\Production\500\002600\2684\002\Civil\Drawings\Plot Sheets\RMVL-PLAN DR\NE 28TH ST

FILENAME: RMVL-PL-28.dwg  
PLOTTED BY: LEE MONASTESSE  
PLOTTED WITH: \_DWG TO PDF.PC3



**NE 28TH STREET**



**NE 28TH STREET**

**NOTE:**

RETURN ALL REMOVED SIGNS TO TPW FIELD OPERATIONS SUPERVISOR SIDNEY RUTTER (SIDNEY.RUTTER@FORTWORTHTEXAS.GOV) AT 5001 JAMES AVE, FORT WORTH, TX.

ITEMS NOT CALLED OUT FOR REMOVAL SHALL BE CLEARED & REMOVED AS REQUIRED AND DIRECTED BY THE ENGINEER. COST TO BE INCLUDED IN PRICE BID FOR SITE CLEARING. EXISTING SITE CONDITIONS MAY VARY FROM THOSE SHOWN ON THESE PLANS.

**REMOVAL LEGEND**

- TREES TO BE REMOVED
- REMOVAL ITEMS
- ABANDONMENT ITEMS
- ASPHALT REMOVAL
- GRAVEL REMOVAL
- CONCRETE REMOVAL
- SIDEWALK/ RAMP REMOVAL
- CONCRETE DRIVE REMOVAL

NO.	STATION, OFFSET	DESCRIPTION	NOTE
20	808+43.76, 35.76 LT	BUS STOP SIGN	REMOVE AND RESET
21	809+02.43, 41.47 RT	WATER METER	PROTECT
22	809+21.51, 34.57 RT	STORM DRAIN	PROTECT
23	809+26.11, 33.06 LT	STORM DRAIN	PROTECT
24	809+41.45, 33.64 LT	LIGHT POLE	PROTECT
25	809+70.40, 40.26 LT	SANITARY SEWER	PROTECT
26	809+82.73, 36.47 RT	OHE POLE	PROTECT
27	810+47.47, 36.26 RT	WATER METER	PROTECT
28	810+50.59, 35.56 RT	OHE POLE	PROTECT
29	810+68.25, 35.04 RT	GUY WIRE	PROTECT
30	811+05.95, 36.25 RT	WATER METER	PROTECT

**DUNAWAY**

550 Bailey Avenue  
Suite 400  
Fort Worth, TX 76107  
817-335-1121

**FORT WORTH**

PROJ NO. 101264 FILE NO. K-2630

Texas Department of Transportation  
© 2021

2018 SAFE ROUTES TO SCHOOL IMPROVEMENTS

**NE 28TH STREET**  
REMOVALS AND UTILITY ADJUSTMENTS  
STA. 808+00.00 TO STA. 816+00.00  
DIAMOND HILL ELEMENTARY SCHOOL

6/14/2021

DATE	BY	REV	REVISION

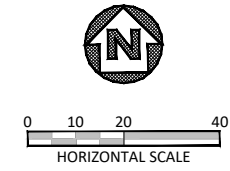
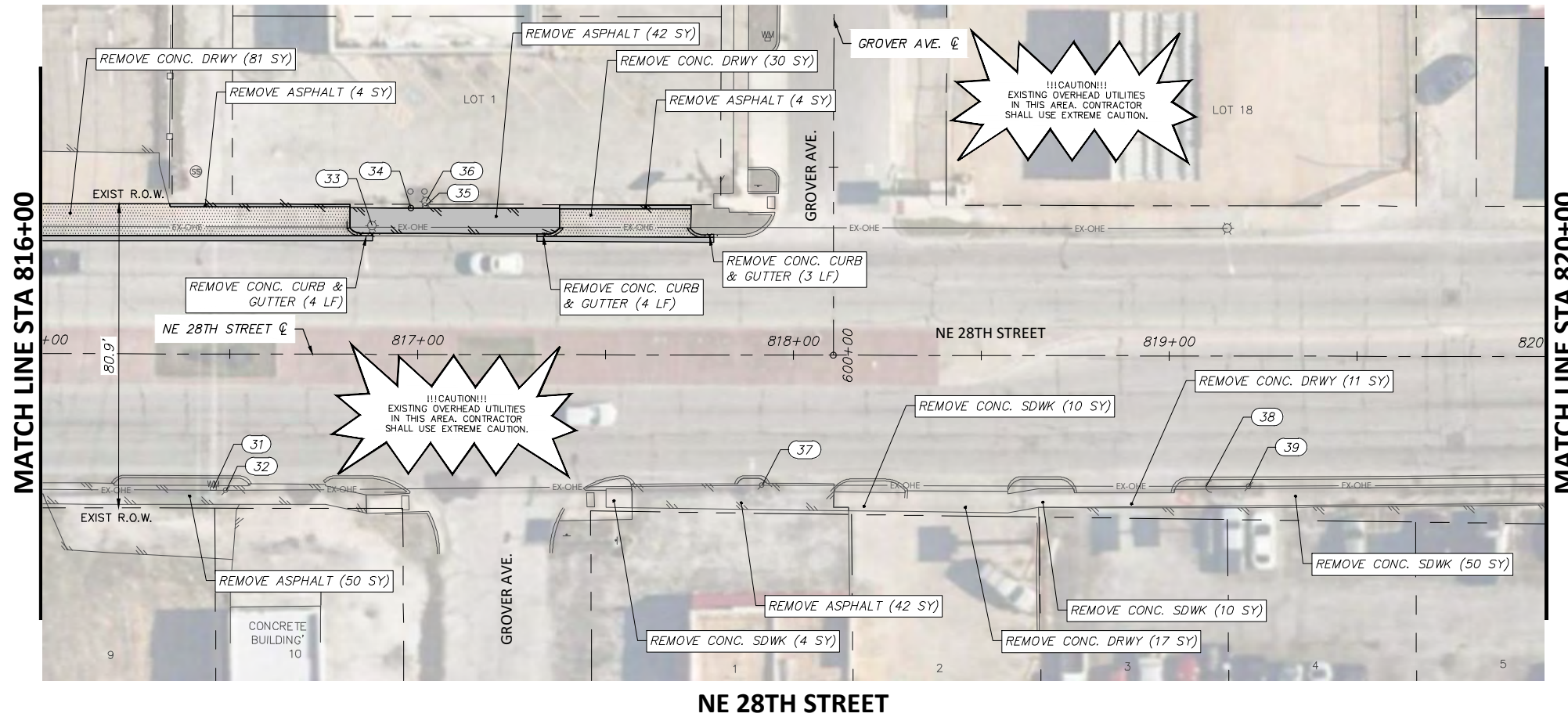
FED. RD. DIV. NO.	STATE	PROJECT NO.	HIGHWAY NO.
6	TEXAS	STP 2021(929)TP	N/A

STATE DISTRICT	COUNTY	CONTROL NO.	SECTION NO.	JOB NO.	SHEET NO.
FTW	TARRANT	0902	90	082	103



FULL PATH: G:\Production\500\002600\2684\002\Civil\Drawings\Plot Sheets\RMVL-PLAN DR\NE 28TH ST

FILENAME: RMVL-PL-28.dwg  
 PLOTTED BY: LEE MONASTESSE  
 PLOTTED WITH: \_DWG TO PDF.PC3



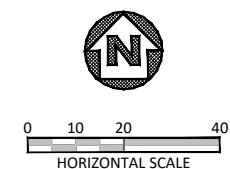
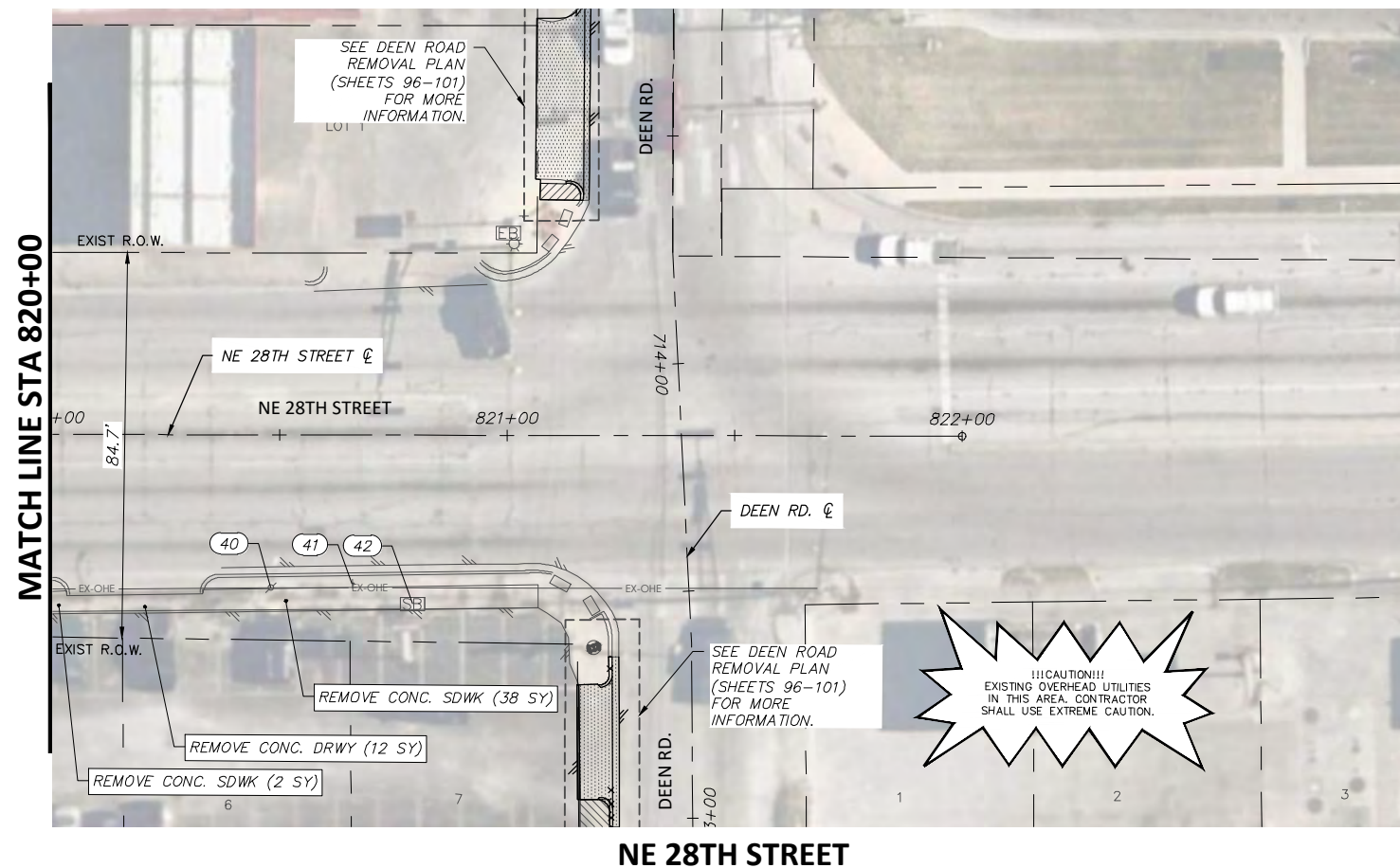
**NOTE:**  
 RETURN ALL REMOVED SIGNS TO TPW FIELD OPERATIONS SUPERVISOR SIDNEY RUTTER (SIDNEY.RUTTER@FORTWORTH.TEXAS.GOV) AT 5001 JAMES AVE, FORT WORTH, TX.  
 ITEMS NOT CALLED OUT FOR REMOVAL SHALL BE CLEARED & REMOVED AS REQUIRED AND DIRECTED BY THE ENGINEER. COST TO BE INCLUDED IN PRICE BID FOR SITE CLEARING. EXISTING SITE CONDITIONS MAY VARY FROM THOSE SHOWN ON THESE PLANS.

**REMOVAL LEGEND**

- TREES TO BE REMOVED
- REMOVAL ITEMS
- ABANDONEMENT ITEMS
- ASPHALT REMOVAL
- GRAVEL REMOVAL
- CONCRETE REMOVAL
- SIDEWALK/ RAMP REMOVAL
- CONCRETE DRIVE REMOVAL

**EXISTING 28TH ST. OBSTRUCTION CONFLICTS**

NO.	STATION, OFFSET	DESCRIPTION	NOTE
31	816+45.61, 35.82 RT	WATER METER	PROTECT (ADJUST TO GRADE)
32	816+48.95, 36.31 RT	OHE POLE	RELOCATE UTILITY POLE (BY OTHER)
33	816+87.75, 34.15 LT	LIGHT POLE	PROTECT
34	816+98.10, 38.90 LT	BOLLARD	PROTECT
35	817+01.86, 39.49 LT	BOLLARD	PROTECT
36	817+02.11, 40.66 LT	LIGHT POLE	PROTECT
37	817+91.66, 34.60 RT	OHE POLE	PROTECT
38	819+09.81, 34.84 RT	GUY WIRE	PROTECT
39	819+21.18, 34.68 RT	OHE POLE	PROTECT
40	820+48.21, 33.60 RT	OHE POLE	PROTECT
41	820+66.10, 32.74 RT	NO PARKING SIGN	REMOVE AND RESET
42	820+79.32, 37.12 RT	SIGNAL BOX	PROTECT



6/14/2021

DATE	BY	REV	REVISION

**DUNAWAY** 550 Bailey Avenue  
 Suite 400  
 Fort Worth, TX 76107  
 (TX REG. F-1114) 817-335-1121

**FORT WORTH**

PROJ NO. 101264 FILE NO. K-2630

Texas Department of Transportation  
 © 2021

2018 SAFE ROUTES TO SCHOOL IMPROVEMENTS

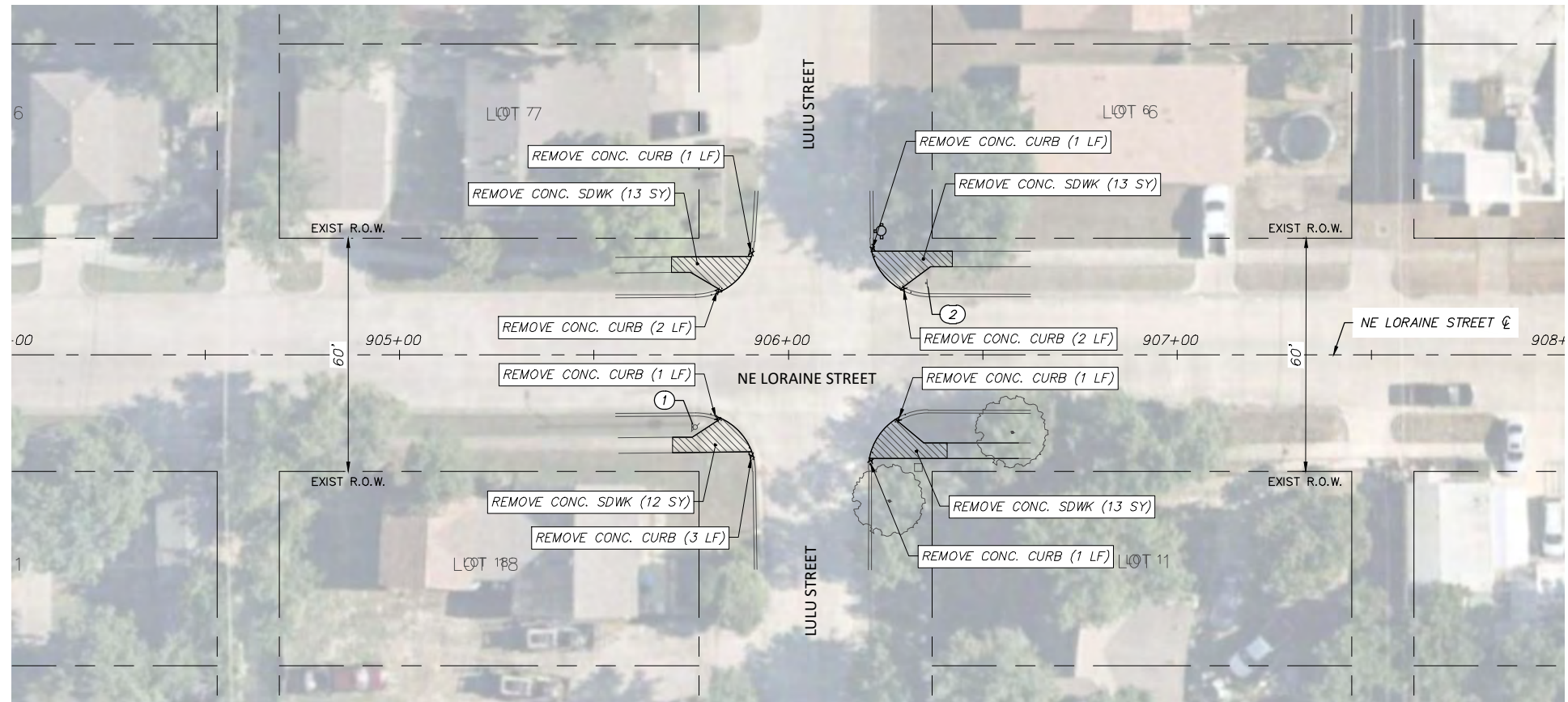
**NE 28TH STREET  
 REMOVALS AND UTILITY ADJUSTMENTS  
 STA. 816+00.00 TO STA. 822+00.00  
 DIAMOND HILL ELEMENTARY SCHOOL**

FED. RD. DIV. NO.	STATE	PROJECT NO.	HIGHWAY NO.		
6	TEXAS	STP 2021(929)TP	N/A		
STATE DISTRICT	COUNTY	CONTROL NO.	SECTION NO.	JOB NO.	SHEET NO.
FTW	TARRANT	0902	90	082	104

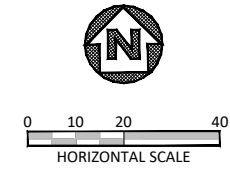


FULL PATH: G:\Production\500\002600\2684\002\Civil\Drawings\Plot Sheets\RMVL-PLAN DH\LORLAINE ST

FILENAME: RMVL-PL-LN.dwg  
 PLOTTED BY: LEE MONASTESSE  
 PLOTTED WITH: \_DWG TO PDF.PC3



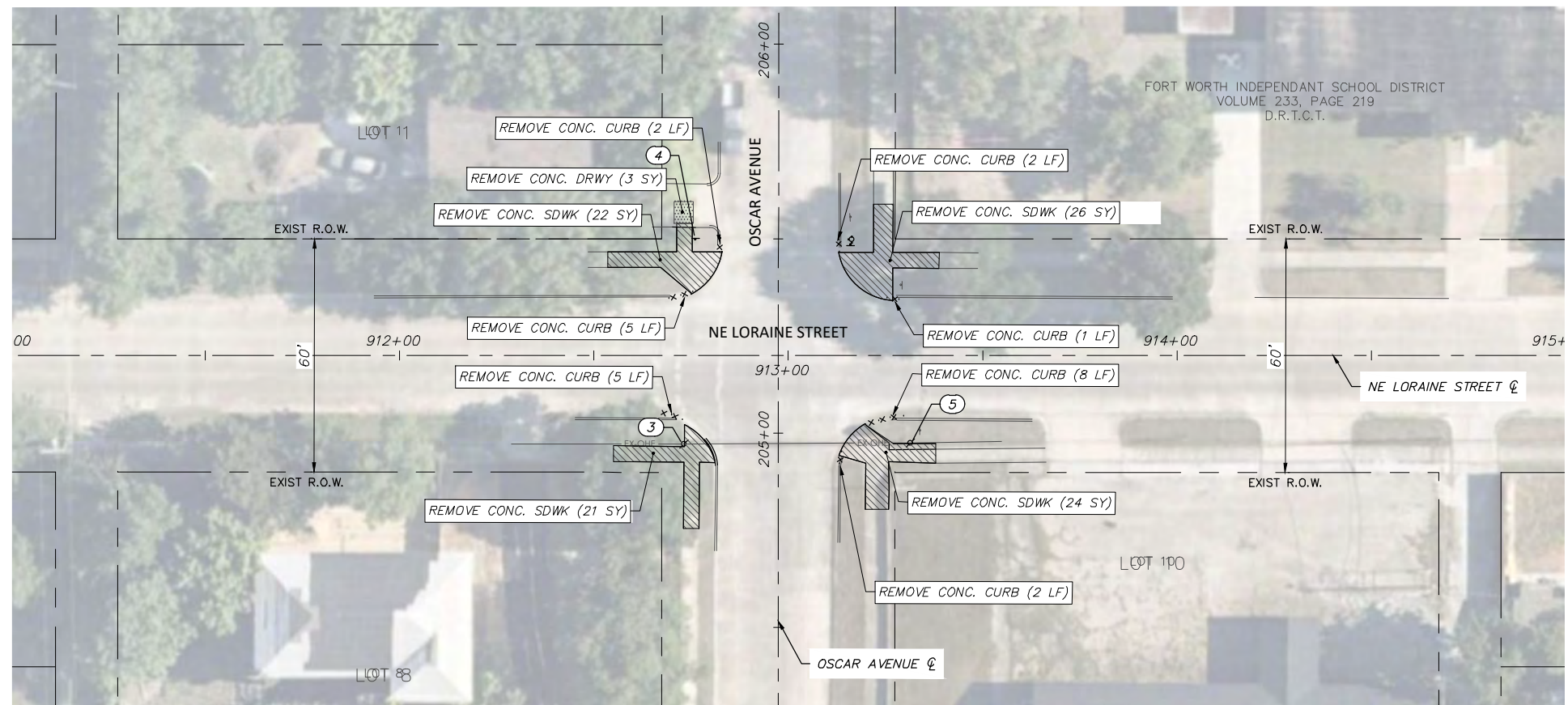
**NE LORLAINE STREET**



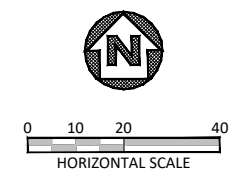
**NOTE:**  
 RETURN ALL REMOVED SIGNS TO TPW FIELD OPERATIONS SUPERVISOR SIDNEY RUTTER (SIDNEY.RUTTER@FORTWORTHTEXAS.GOV) AT 5001 JAMES AVE, FORT WORTH, TX.  
 ITEMS NOT CALLED OUT FOR REMOVAL SHALL BE CLEARED & REMOVED AS REQUIRED AND DIRECTED BY THE ENGINEER. COST TO BE INCLUDED IN PRICE BID FOR SITE CLEARING. EXISTING SITE CONDITIONS MAY VARY FROM THOSE SHOWN ON THESE PLANS.

REMOVAL LEGEND	
	TREES TO BE REMOVED
	REMOVAL ITEMS
	ABANDONMENT ITEMS
	ASPHALT REMOVAL
	GRAVEL REMOVAL
	CONCRETE REMOVAL
	SIDEWALK/ RAMP REMOVAL
	CONCRETE DRIVE REMOVAL

EXISTING NE LORLAINE ST OBSTRUCTION CONFLICTS			
NO.	STATION, OFFSET	DESCRIPTION	NOTE
1	905+76.06, 18.68 RT	OHE POLE/STOP SIGN	PROTECT
2	906+35.48, 18.41 LT	STOP SIGN	PROTECT
3	912+73.13, 22.79 RT	OHE POLE	RELOCATE OHE POLE (BY OTHER)
4	912+76.07, 29.88 LT	STOP SIGN	REMOVE & RESET
5	913+31.42, 22.53 RT	OHE POLE	PROTECT



**NE LORLAINE STREET**



6/14/2021

DATE	BY	REV	REVISION

**DUNAWAY** 550 Bailey Avenue  
 Suite 400  
 Fort Worth, TX 76107  
 (TX REG #1114) 817-335-1121

**FORT WORTH**

PROJ NO. 101264 FILE NO. K-2630

Texas Department of Transportation  
 © 2021

2018 SAFE ROUTES TO SCHOOL IMPROVEMENTS

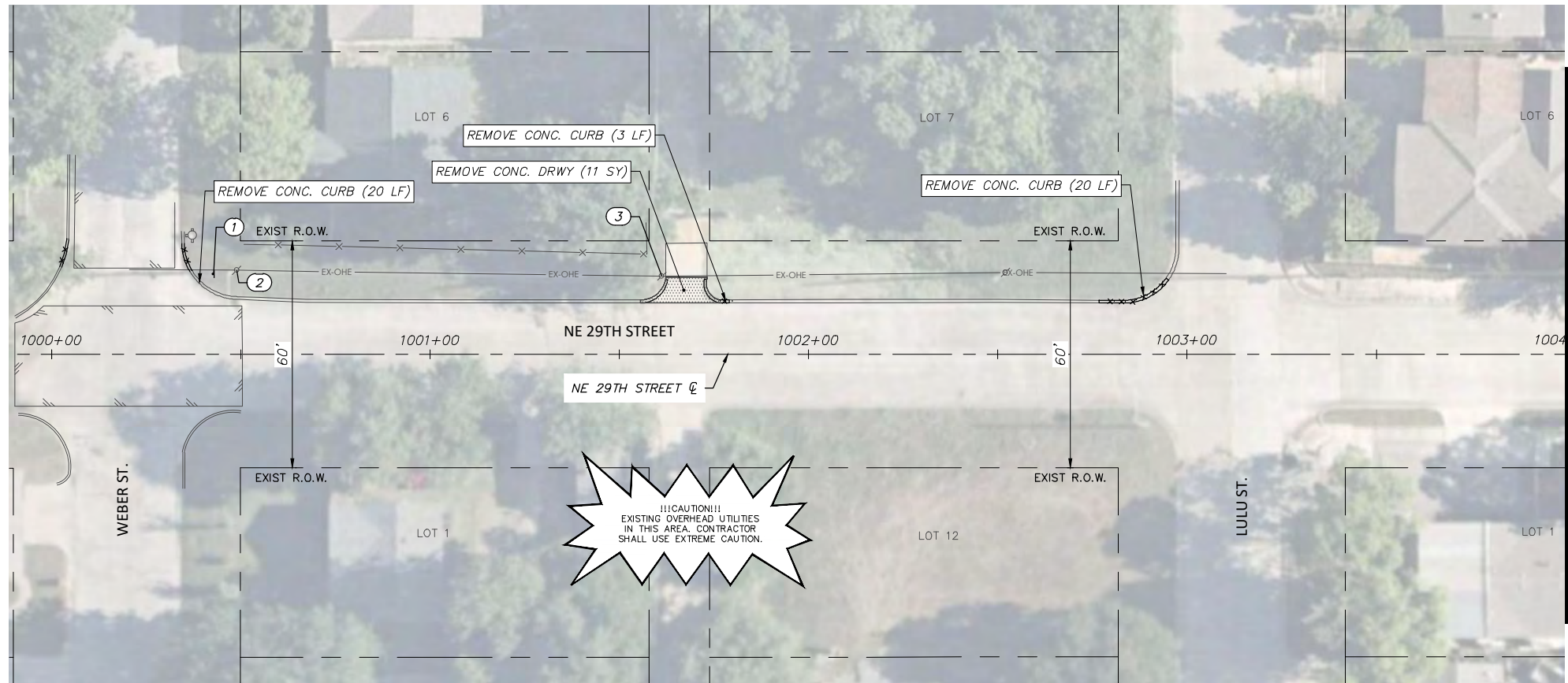
**NE LORLAINE STREET  
 REMOVALS AND UTILITY ADJUSTMENTS  
 AT LULU ST & OSCAR AVE  
 DIAMOND HILL ELEMENTARY SCHOOL**

FED. RD. DIV. NO.	STATE	PROJECT NO.	HIGHWAY NO.		
6	TEXAS	STP 2021(929)TP	N/A		
STATE DISTRICT	COUNTY	CONTROL NO.	SECTION NO.	JOB NO.	SHEET NO.
FTW	TARRANT	0902	90	082	105



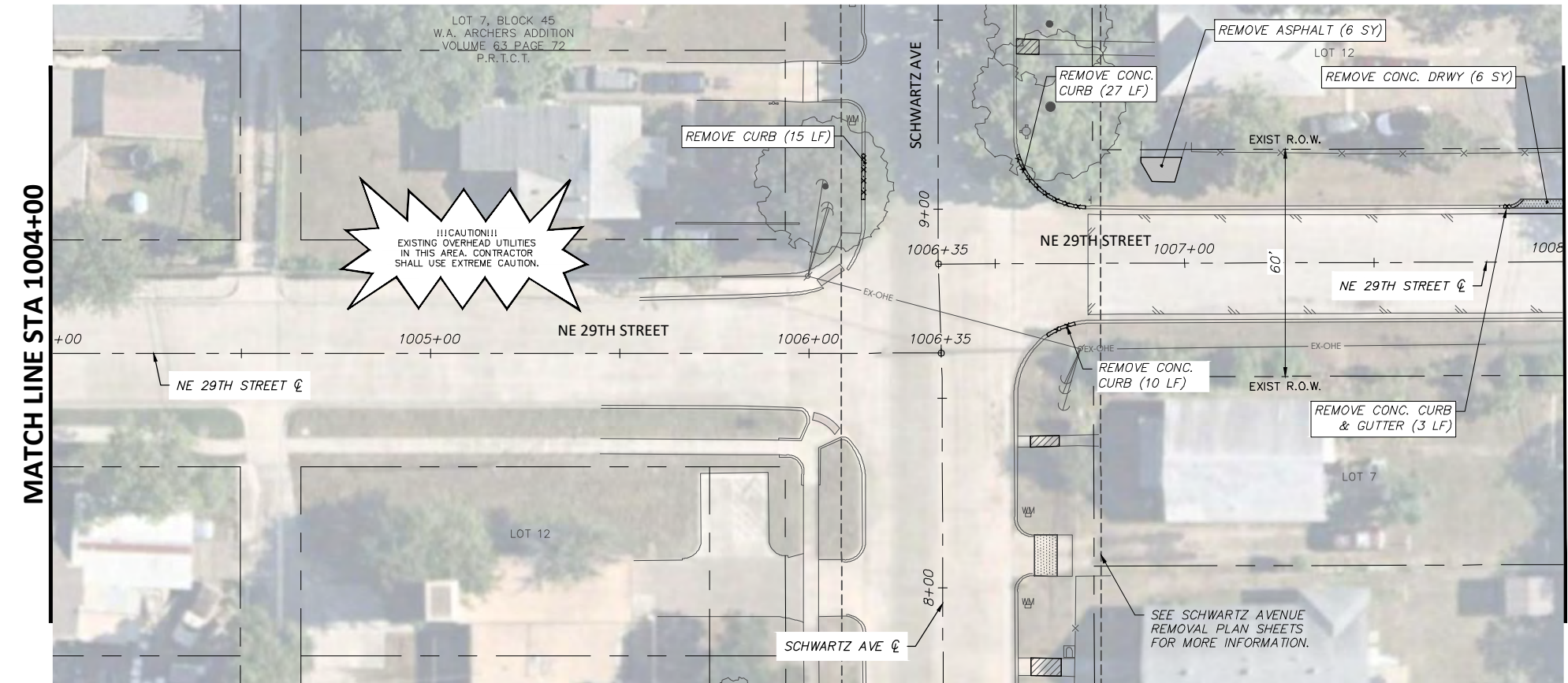
FULL PATH: G:\Production\500\002600\2684\002\Civil\Drawings\Plot Sheets\RMVL-PLAN DR\NE 29TH ST

FILENAME: RMVL-PL-29.dwg  
 PLOTTED BY: LEE MONASTESSE  
 PLOTTED WITH: \_DWG TO PDF.PC3



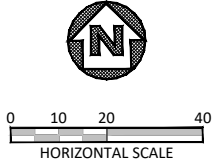
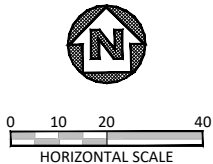
**NE 29TH STREET**

MATCH LINE STA 1004+00



**NE 29TH STREET**

MATCH LINE STA 1008+00



**NOTE:**  
 RETURN ALL REMOVED SIGNS TO TPW FIELD OPERATIONS SUPERVISOR SIDNEY RUTTER (SIDNEY.RUTTER@FORTWORTHTEXAS.GOV) AT 5001 JAMES AVE, FORT WORTH, TX.  
 ITEMS NOT CALLED OUT FOR REMOVAL SHALL BE CLEARED & REMOVED AS REQUIRED AND DIRECTED BY THE ENGINEER. COST TO BE INCLUDED IN PRICE BID FOR SITE CLEARING. EXISTING SITE CONDITIONS MAY VARY FROM THOSE SHOWN ON THESE PLANS.

**REMOVAL LEGEND**

- TREES TO BE REMOVED
- REMOVAL ITEMS
- ABANDONEMENT ITEMS
- ASPHALT REMOVAL
- GRAVEL REMOVAL
- CONCRETE REMOVAL
- SIDEWALK/ RAMP REMOVAL
- CONCRETE DRIVE REMOVAL

**EXISTING NE 29TH ST OBSTRUCTION CONFLICTS**

NO.	CL STATION, OFFSET	DESCRIPTION	NOTE
1	1000+42.68, 21.25 LT	STREET SIGN	PROTECT
2	1000+48.86, 22.23 LT	OHE POLE	PROTECT
3	1001+61.21, 20.68 LT	OHE POLE	PROTECT

DATE	BY	REV	REVISION

**DUNAWAY** 550 Bailey Avenue  
 Suite 400  
 Fort Worth, TX 76107  
 (TX REG #1114) 817-335-1121

**FORT WORTH**

PROJ NO. 101264 FILE NO. K-2630

Texas Department of Transportation  
 © 2021

2018 SAFE ROUTES TO SCHOOL IMPROVEMENTS

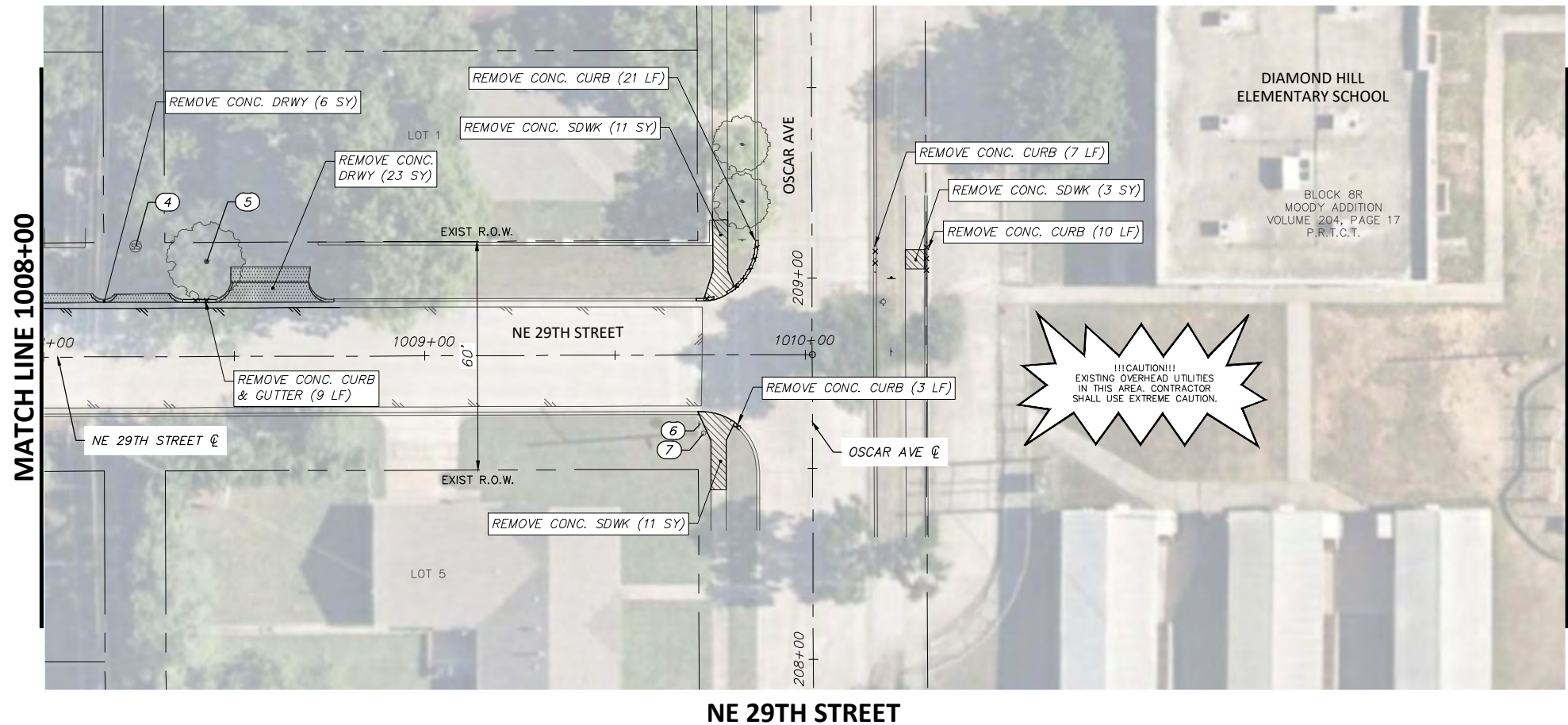
**NE 29TH STREET  
 REMOVALS AND UTILITY ADJUSTMENTS  
 STA. 1000+00.00 TO STA. 1008+00.00  
 DIAMOND HILL ELEMENTARY SCHOOL**

FED. RD. DIV. NO.	STATE	PROJECT NO.	HIGHWAY NO.		
6	TEXAS	STP 2021(929)TP	N/A		
STATE DISTRICT	COUNTY	CONTROL NO.	SECTION NO.	JOB NO.	SHEET NO.
FTW	TARRANT	0902	90	082	106

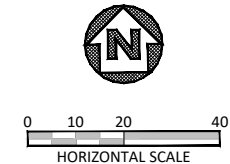
6/14/2021

*Joshua Wright*





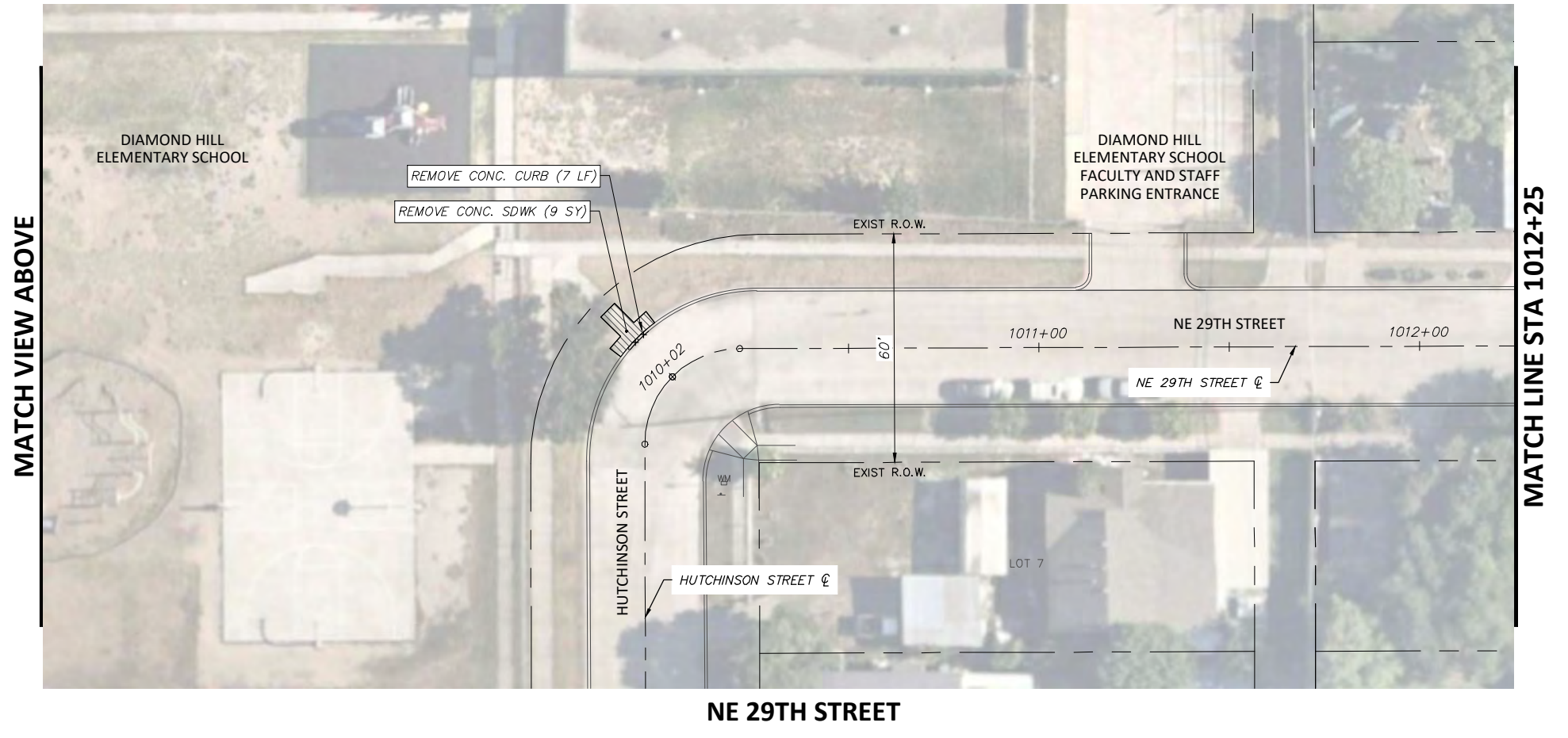
NE 29TH STREET



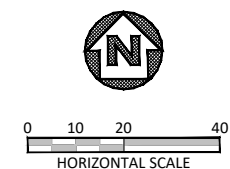
**NOTE:**  
 RETURN ALL REMOVED SIGNS TO TPW FIELD OPERATIONS SUPERVISOR SIDNEY RUTTER (SIDNEY.RUTTER@FORTWORTHTEXAS.GOV) AT 5001 JAMES AVE, FORT WORTH, TX.  
 ITEMS NOT CALLED OUT FOR REMOVAL SHALL BE CLEARED & REMOVED AS REQUIRED AND DIRECTED BY THE ENGINEER. COST TO BE INCLUDED IN PRICE BID FOR SITE CLEARING. EXISTING SITE CONDITIONS MAY VARY FROM THOSE SHOWN ON THESE PLANS.

REMOVAL LEGEND	
	TREES TO BE REMOVED
	REMOVAL ITEMS
	ABANDONEMENT ITEMS
	ASPHALT REMOVAL
	GRAVEL REMOVAL
	CONCRETE REMOVAL
	SIDEWALK/ RAMP REMOVAL
	CONCRETE DRIVE REMOVAL

EXISTING NE 29TH ST OBSTRUCTION CONFLICTS			
NO.	☉ STATION, OFFSET	DESCRIPTION	NOTE
4	1008+24.22, 28.94 LT	SSMH	PROTECT
5	1008+42.85, 24.92 LT	TREE	PROTECT
6	1009+72.20, 18.23 RT	STOP SIGN	PROTECT
7	1009+73.23, 20.59 RT	OHE POLE	PROTECT



NE 29TH STREET



DATE	BY	REV	REVISION

**DUNAWAY** 550 Bailey Avenue  
 Suite 400  
 Fort Worth, TX 76107  
 (TX REG #1114) 817-335-1121

**FORT WORTH**

PROJ NO. 101264 FILE NO. K-2630

Texas Department of Transportation  
 © 2021

2018 SAFE ROUTES TO SCHOOL IMPROVEMENTS

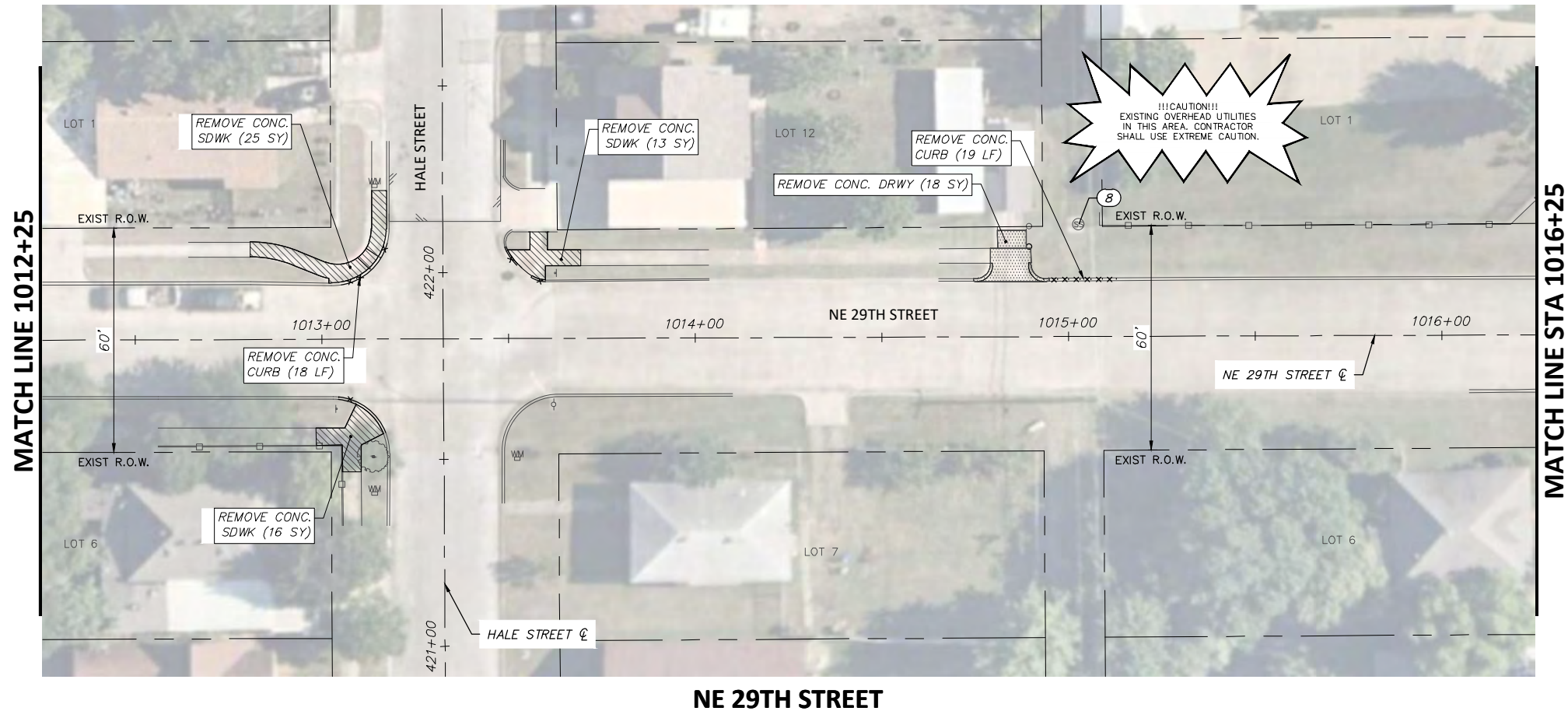
**NE 29TH STREET  
 REMOVALS AND UTILITY ADJUSTMENTS  
 STA. 1008+00.00 TO STA. 1012+25.00  
 DIAMOND HILL ELEMENTARY SCHOOL**

FED. RD. DIV. NO.	STATE	PROJECT NO.	HIGHWAY NO.		
6	TEXAS	STP 2021(929)TP	N/A		
STATE DISTRICT	COUNTY	CONTROL NO.	SECTION NO.	JOB NO.	SHEET NO.
FTW	TARRANT	0902	90	082	107

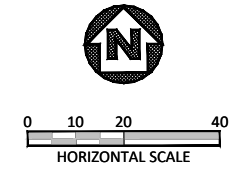
6/14/2021

*Joshua Wright*





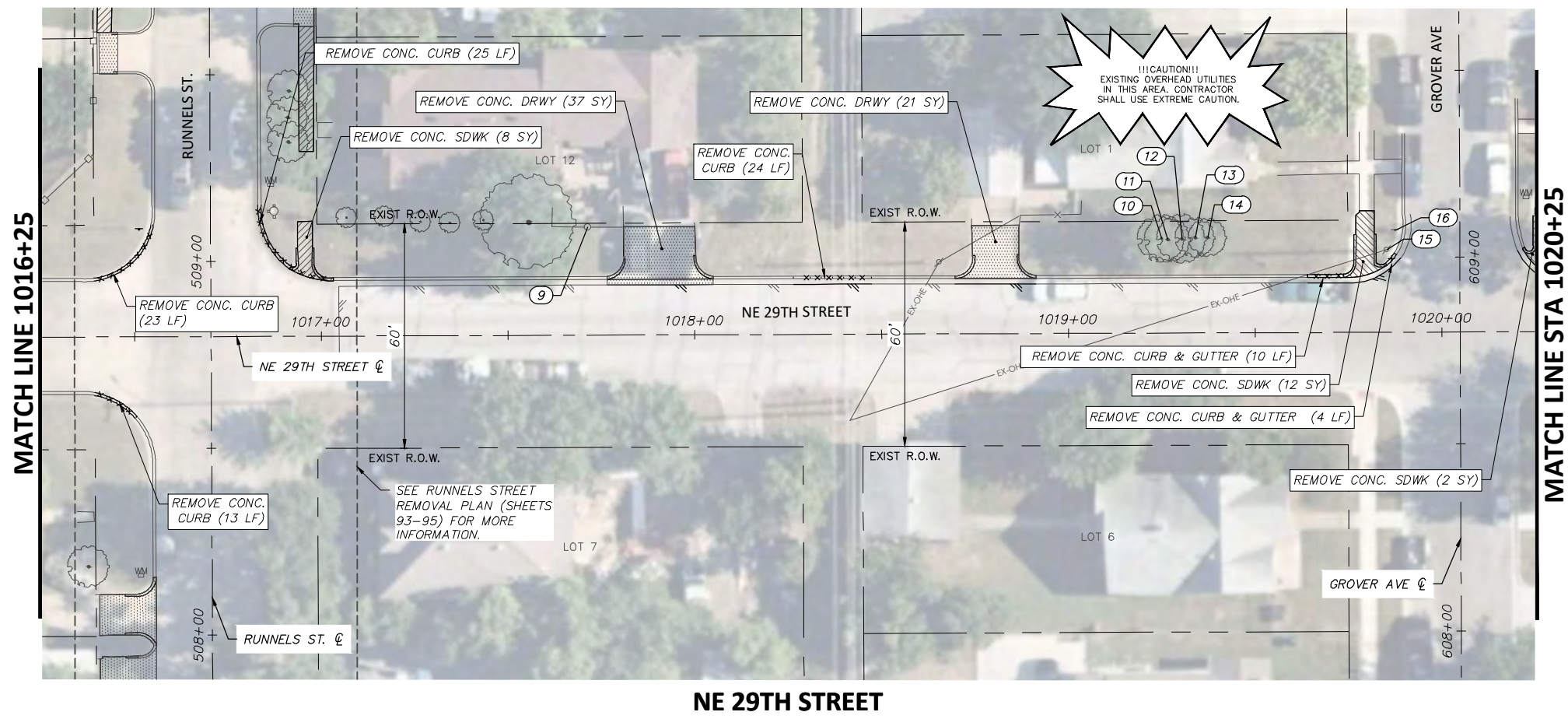
**NE 29TH STREET**



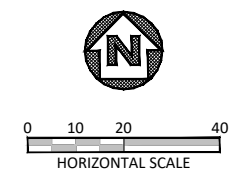
**NOTE:**  
 RETURN ALL REMOVED SIGNS TO TPW FIELD OPERATIONS SUPERVISOR SIDNEY RUTTER (SIDNEY.RUTTER@FORTWORTHTEXAS.GOV) AT 5001 JAMES AVE, FORT WORTH, TX.  
 ITEMS NOT CALLED OUT FOR REMOVAL SHALL BE CLEARED & REMOVED AS REQUIRED AND DIRECTED BY THE ENGINEER. COST TO BE INCLUDED IN PRICE BID FOR SITE CLEARING. EXISTING SITE CONDITIONS MAY VARY FROM THOSE SHOWN ON THESE PLANS.

REMOVAL LEGEND	
	TREES TO BE REMOVED
	REMOVAL ITEMS
	ABANDONEMENT ITEMS
	ASPHALT REMOVAL
	GRAVEL REMOVAL
	CONCRETE REMOVAL
	SIDEWALK/ RAMP REMOVAL
	CONCRETE DRIVE REMOVAL

EXISTING NE 29TH ST OBSTRUCTION CONFLICTS			
NO.	☐ STATION, OFFSET	DESCRIPTION	NOTE
8	1015+02.79, 30.00 LT	SSMH	PROTECT
9	1017+71.40, 28.96 LT	WOOD FENCE	PROTECT
10	1019+25.09, 25.25 LT	TREE	PROTECT
11	1019+26.73, 24.97 LT	TREE	PROTECT
12	1019+30.51, 25.12 LT	TREE	PROTECT
13	1019+34.12, 25.47 LT	TREE	PROTECT
14	1019+37.41, 25.49 LT	TREE	PROTECT
15	1019+85.28, 22.09 LT	OHE POLE	PROTECT
16	1019+87.54, 27.26 LT	STOP SIGN	PROTECT



**NE 29TH STREET**



DATE	BY	REV	REVISION

**DUNAWAY** 550 Bailey Avenue  
 Suite 400  
 Fort Worth, TX 76107  
 (TX REG. F-1114) 817-335-1121

**FORT WORTH**

PROJ NO. 101264 FILE NO. K-2630

Texas Department of Transportation  
 © 2021

2018 SAFE ROUTES TO SCHOOL IMPROVEMENTS

**NE 29TH STREET  
 REMOVALS AND UTILITY ADJUSTMENTS  
 STA. 1012+25.00 TO STA. 1020+25.00  
 DIAMOND HILL ELEMENTARY SCHOOL**

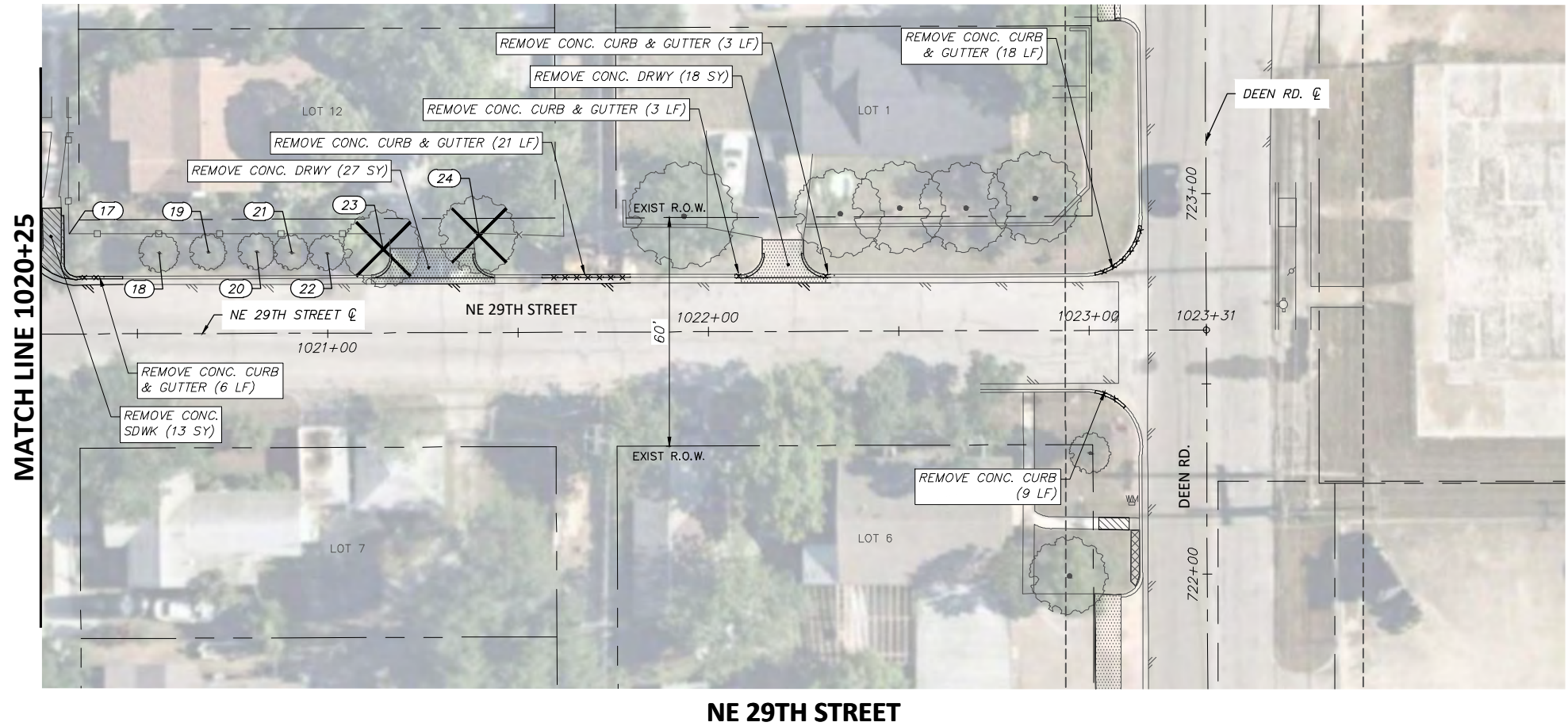
FED. RD. DIV. NO.	STATE	PROJECT NO.	HIGHWAY NO.		
6	TEXAS	STP 2021(929)TP	N/A		
STATE DISTRICT	COUNTY	CONTROL NO.	SECTION NO.	JOB NO.	SHEET NO.
FTW	TARRANT	0902	90	082	108

6/14/2021



FULL PATH: G:\Production\500\002600\2684\002\Civil\Drawings\Plot Sheets\RMVL-PLAN DR\NE 29TH ST

FILENAME: RMVL-PL-29.dwg  
 PLOTTED BY: LEE MONASTESSE  
 PLOTTED WITH: \_DWG TO PDF.PC3



**NOTE:**  
 RETURN ALL REMOVED SIGNS TO TPW FIELD OPERATIONS SUPERVISOR SIDNEY RUTTER (SIDNEY.RUTTER@FORTWORTHTEXAS.GOV) AT 5001 JAMES AVE, FORT WORTH, TX.  
 ITEMS NOT CALLED OUT FOR REMOVAL SHALL BE CLEARED & REMOVED AS REQUIRED AND DIRECTED BY THE ENGINEER. COST TO BE INCLUDED IN PRICE BID FOR SITE CLEARING. EXISTING SITE CONDITIONS MAY VARY FROM THOSE SHOWN ON THESE PLANS.

REMOVAL LEGEND	
	TREES TO BE REMOVED
	REMOVAL ITEMS
	ABANDONEMENT ITEMS
	ASPHALT REMOVAL
	GRAVEL REMOVAL
	CONCRETE REMOVAL
	SIDEWALK/ RAMP REMOVAL
	CONCRETE DRIVE REMOVAL

EXISTING NE 29TH ST OBSTRUCTION CONFLICTS			
NO.	STATION, OFFSET	DESCRIPTION	NOTE
17	1020+32.11, 26.30 LT	FENCE	PROTECT
18	1020+55.90, 21.22 LT	TREE	PROTECT
19	1020+68.75, 21.34 LT	TREE	PROTECT
20	1020+81.49, 21.43 LT	TREE	PROTECT
21	1020+90.63, 21.18 LT	TREE	PROTECT
22	1020+99.98, 20.94 LT	TREE	PROTECT
23	1021+14.70, 21.96 LT	TREE	REMOVE (18" CALIPER)
24	1021+39.85, 25.52 LT	TREE	REMOVE (24" CALIPER)

DATE	BY	REV	REVISION

**DUNAWAY** (TX REG #1114) 550 Bailey Avenue  
 Suite 400  
 Fort Worth, TX 76107  
 817-335-1121

**FORT WORTH**

PROJ NO. 101264 FILE NO. K-2630

Texas Department of Transportation  
 © 2021

2018 SAFE ROUTES TO SCHOOL IMPROVEMENTS

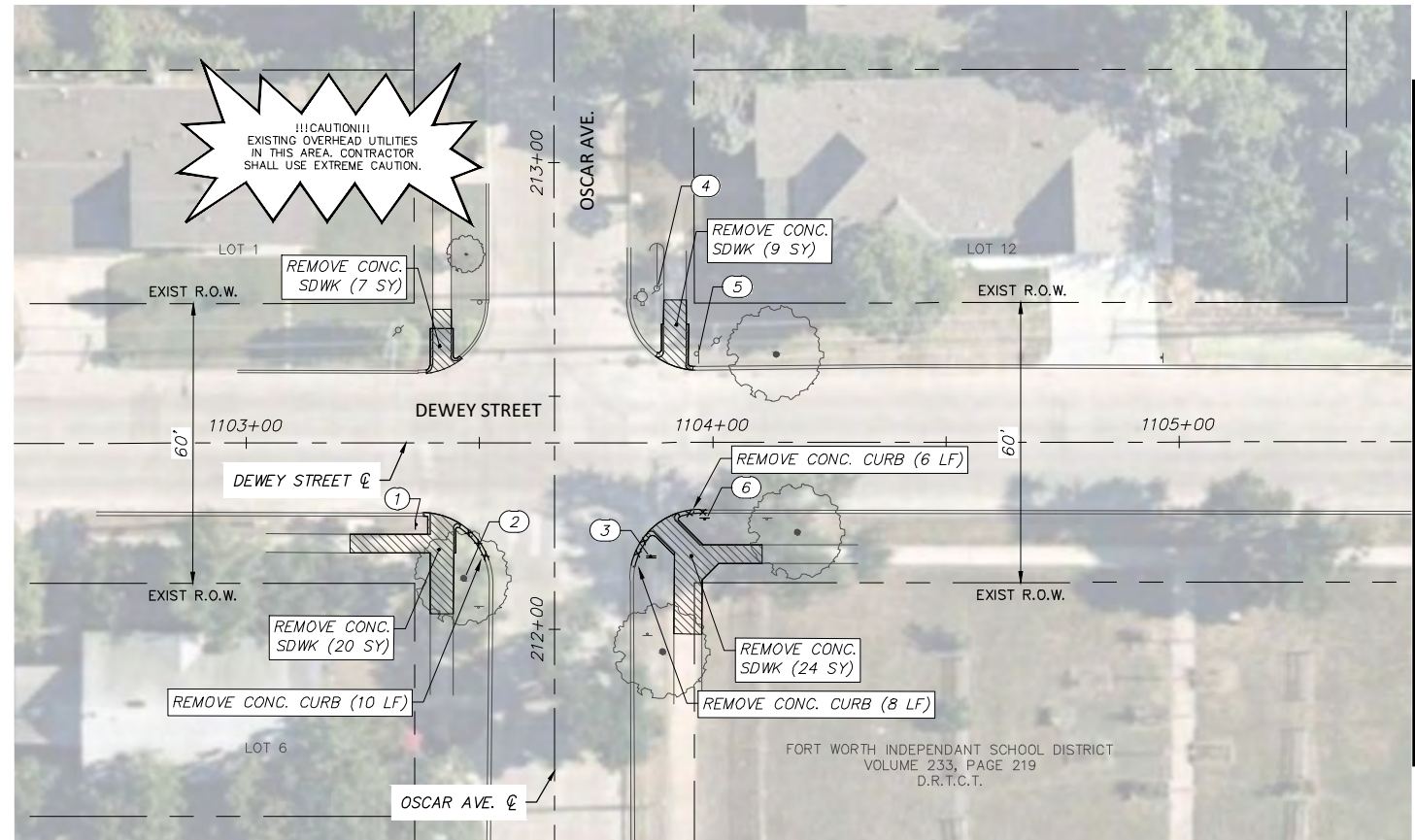
**NE 29TH STREET  
 REMOVALS AND UTILITY ADJUSTMENTS  
 STA. 1020+25.00 TO STA. 1023+31.00  
 DIAMOND HILL ELEMENTARY SCHOOL**

FED. RD. DIV. NO.	STATE	PROJECT NO.	HIGHWAY NO.
6	TEXAS	STP 2021(929)TP	N/A

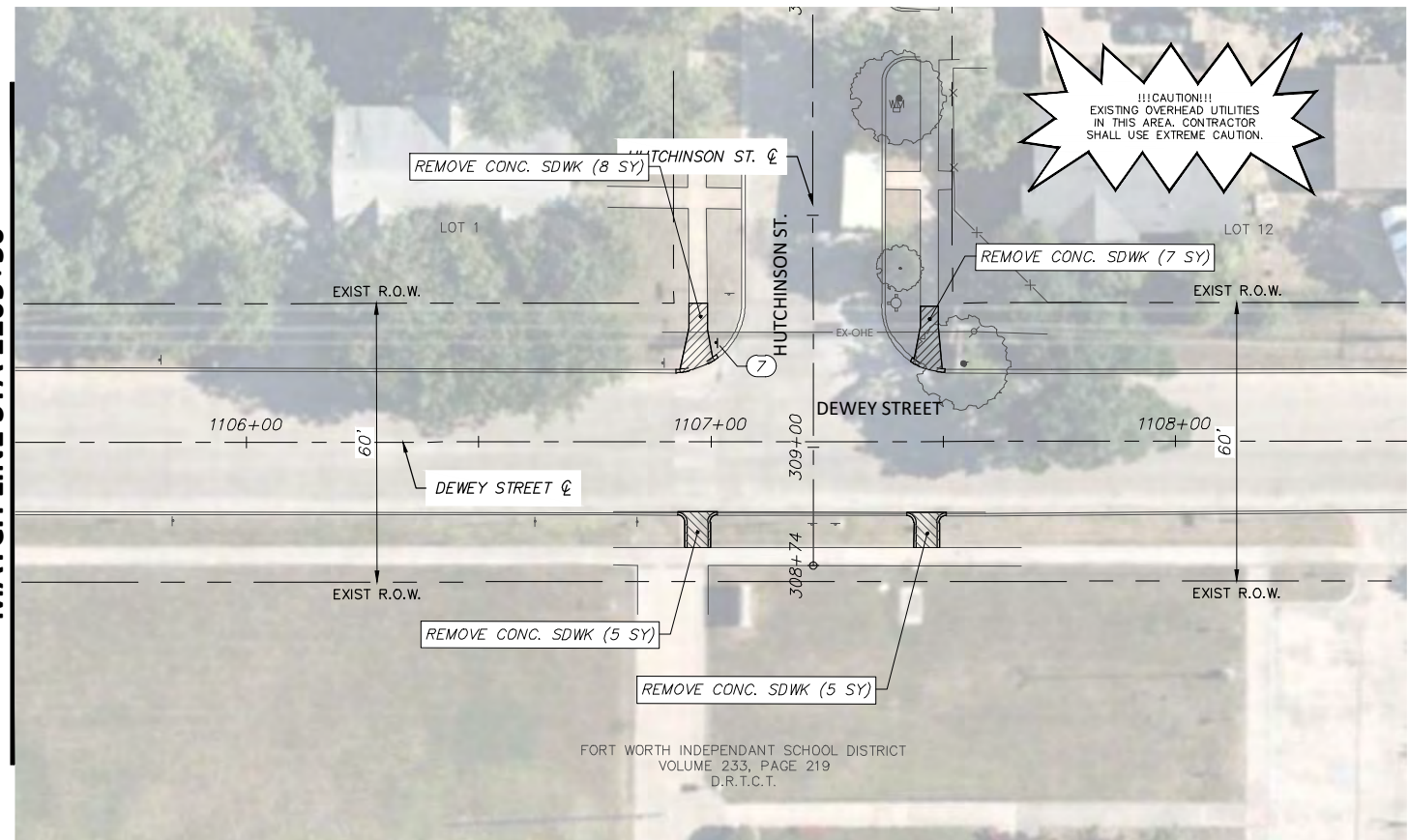
STATE DISTRICT	COUNTY	CONTROL NO.	SECTION NO.	JOB NO.	SHEET NO.
FTW	TARRANT	0902	90	082	109

6/14/2021

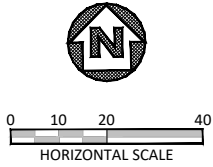




DEWEY STREET



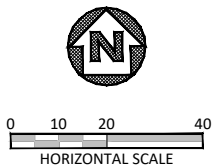
DEWEY STREET



**NOTE:**  
 RETURN ALL REMOVED SIGNS TO TPW FIELD OPERATIONS SUPERVISOR SIDNEY RUTTER (SIDNEY.RUTTER@FORTWORTHTEXAS.GOV) AT 5001 JAMES AVE, FORT WORTH, TX.  
 ITEMS NOT CALLED OUT FOR REMOVAL SHALL BE CLEARED & REMOVED AS REQUIRED AND DIRECTED BY THE ENGINEER. COST TO BE INCLUDED IN PRICE BID FOR SITE CLEARING. EXISTING SITE CONDITIONS MAY VARY FROM THOSE SHOWN ON THESE PLANS.

REMOVAL LEGEND	
	TREES TO BE REMOVED
	REMOVAL ITEMS
	ABANDONEMENT ITEMS
	ASPHALT REMOVAL
	GRAVEL REMOVAL
	CONCRETE REMOVAL
	SIDEWALK/ RAMP REMOVAL
	CONCRETE DRIVE REMOVAL

EXISTING DEWEY STREET OBSTRUCTION CONFLICTS			
NO.	STATION, OFFSET	DESCRIPTION	NOTE
1	1103+36.42, 17.56 RT	STOP SIGN	REMOVE & RESET
2	1103+46.61, 29.10 RT	TREE	PROTECT
3	1103+86.73, 24.51 RT	STOP SIGN	REMOVE & RESET
4	1103+88.11, 32.96 LT	OHE POLE	PROTECT
5	1103+96.82, 18.94 LT	STOP SIGN	PROTECT
6	1103+98.29, 16.43 RT	TRAFFIC SIGN	REMOVE & RESET
7	1107+01.12, 21.28 LT	TRAFFIC SIGN	PROTECT



MATCH LINE STA 1105+50

MATCH LINE STA 1105+50

DATE	BY	REV	REVISION

**DUNAWAY** 550 Bailey Avenue  
 Suite 400  
 Fort Worth, TX 76107  
 (TX REG #1114) 817-335-1121

**FORT WORTH**

PROJ NO. 101264 FILE NO. K-2630

Texas Department of Transportation  
 © 2021

2018 SAFE ROUTES TO SCHOOL IMPROVEMENTS

**DEWEY STREET  
 REMOVALS AND UTILITY ADJUSTMENTS  
 STA. 1102+50.00 TO STA. 1108+50.00  
 DIAMOND HILL ELEMENTARY SCHOOL**

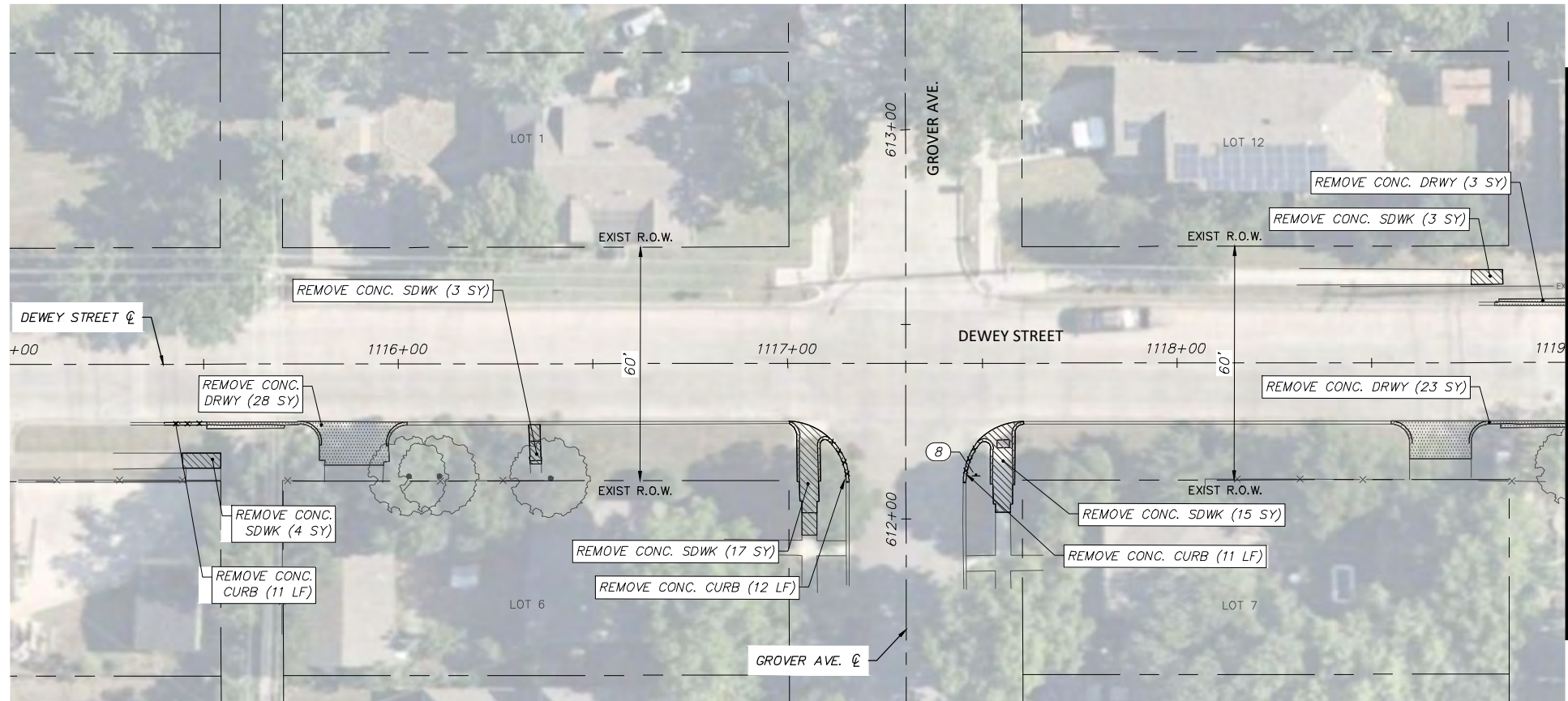
FED. RD. DIV. NO.	STATE	PROJECT NO.	HIGHWAY NO.		
6	TEXAS	STP 2021(929)TP	N/A		
STATE DISTRICT	COUNTY	CONTROL NO.	SECTION NO.	JOB NO.	SHEET NO.
FTW	TARRANT	0902	90	082	110

6/14/2021



FULL PATH: G:\Production\500\002600\2684\002\Civil\Drawings\Plot Sheets\RMV-PLAN DR\DEWEY ST

FILENAME: RMV-PL-DW.dwg  
 PLOTTED BY: LEE MONASTESSE  
 PLOTTED WITH: \_DWG TO PDF.PC3



DEWEY STREET

MATCH LINE STA 1119+00

NOTE:

RETURN ALL REMOVED SIGNS TO TPW FIELD OPERATIONS SUPERVISOR SIDNEY RUTTER (SIDNEY.RUTTER@FORTWORTHTEXAS.GOV) AT 5001 JAMES AVE, FORT WORTH, TX.

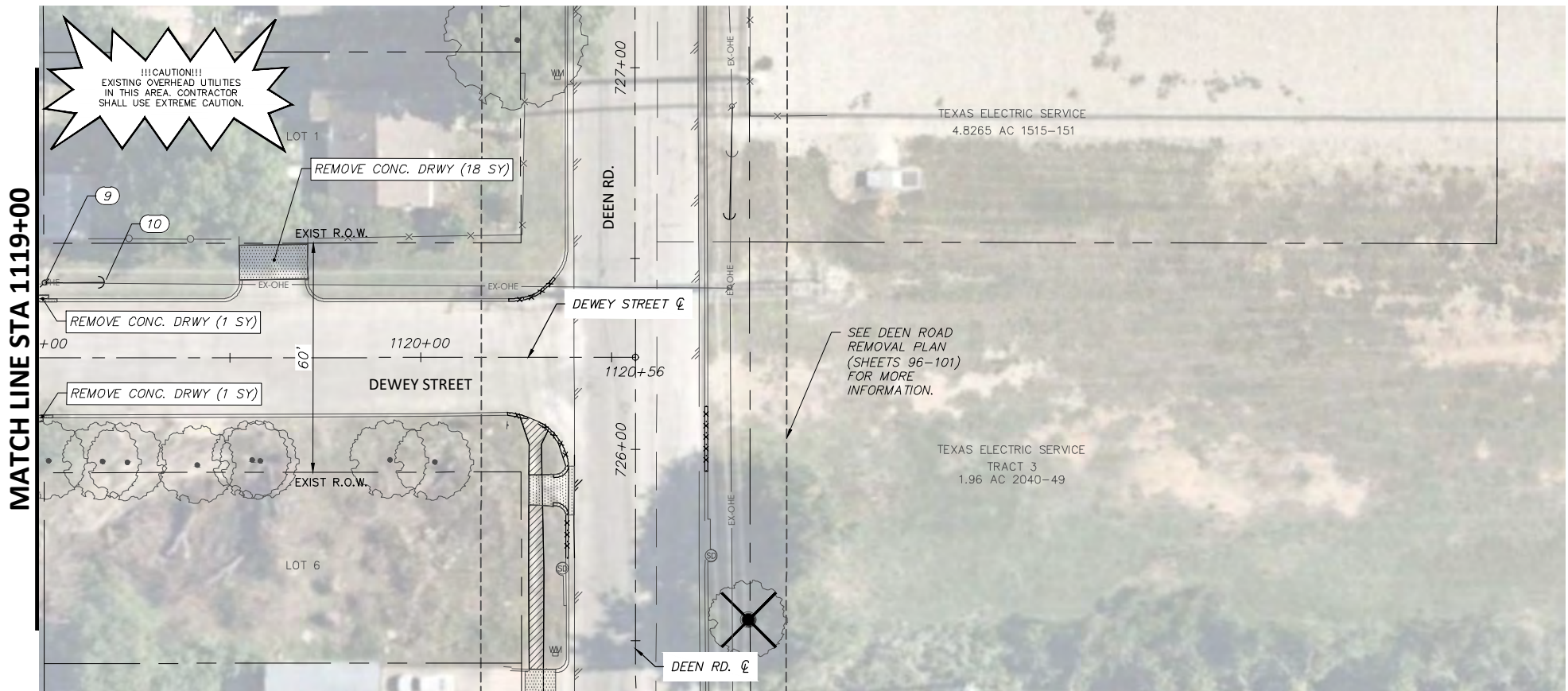
ITEMS NOT CALLED OUT FOR REMOVAL SHALL BE CLEARED & REMOVED AS REQUIRED AND DIRECTED BY THE ENGINEER. COST TO BE INCLUDED IN PRICE BID FOR SITE CLEARING. EXISTING SITE CONDITIONS MAY VARY FROM THOSE SHOWN ON THESE PLANS.

REMOVAL LEGEND

- TREES TO BE REMOVED
- REMOVAL ITEMS
- ABANDONEMENT ITEMS
- ASPHALT REMOVAL
- GRAVEL REMOVAL
- CONCRETE REMOVAL
- SIDEWALK/ RAMP REMOVAL
- CONCRETE DRIVE REMOVAL

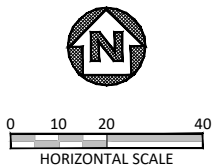
EXISTING DEWEY STREET OBSTRUCTION CONFLICTS

NO.	STATION, OFFSET	DESCRIPTION	NOTE
8	1117+48.40, 28.67 RT	STOP SIGN	REMOVE & RESET
9	1119+01.50, 19.64 LT	OHE POLE	PROTECT
10	1119+17.16, 19.69 LT	GUY WIRE	RELOCATE GUY WIRE (BY OTHER)



DEWEY STREET

MATCH LINE STA 1119+00



DATE	BY	REV	REVISION

**DUNAWAY** 550 Bailey Avenue  
 Suite 400  
 Fort Worth, TX 76107  
 (TX REG F-1114) 817-335-1121

**FORT WORTH**  
 PROJ NO. 101264 FILE NO. K-2630

Texas Department of Transportation  
 © 2021

2018 SAFE ROUTES TO SCHOOL IMPROVEMENTS

**DEWEY STREET  
 REMOVALS AND UTILITY ADJUSTMENTS  
 STA. 1115+00.00 TO STA. 1120+56.00  
 DIAMOND HILL ELEMENTARY SCHOOL**

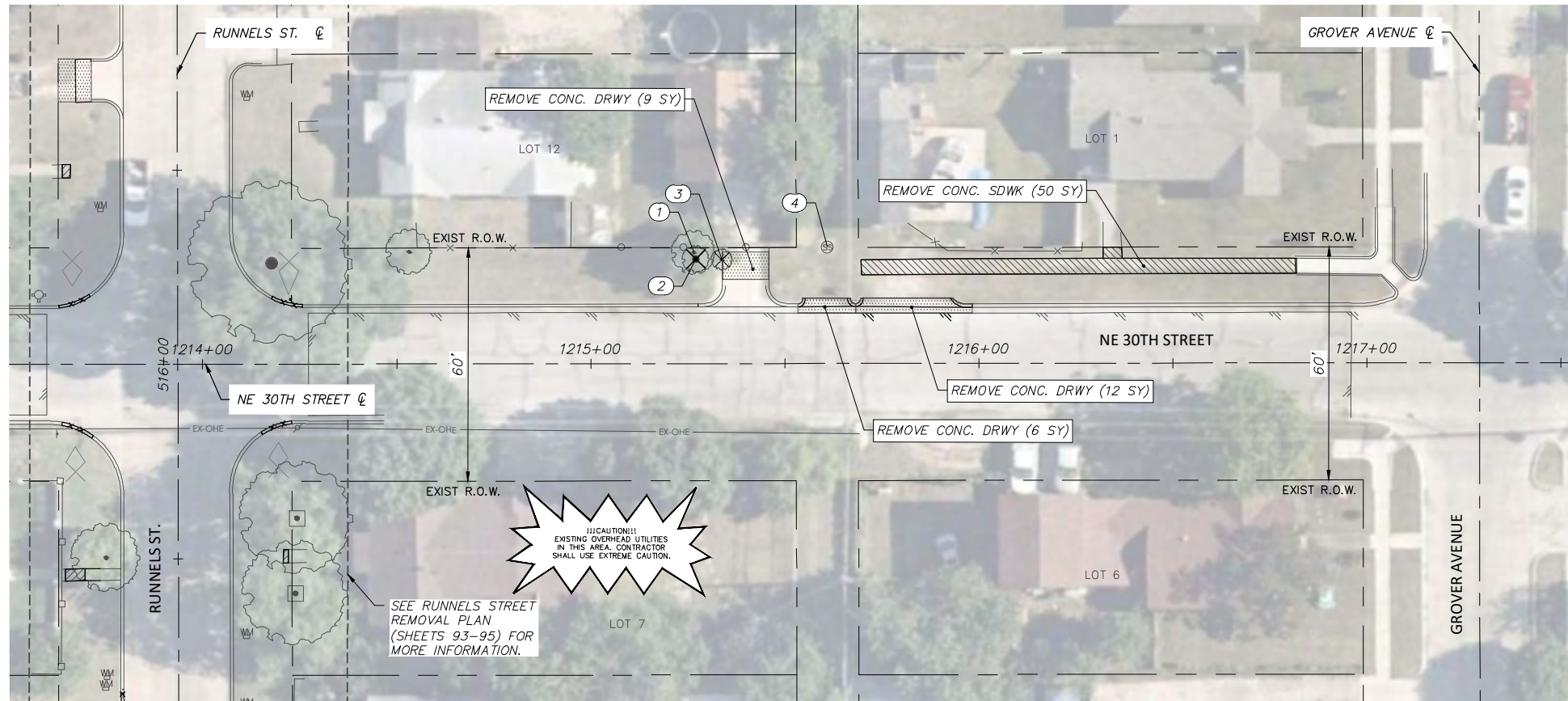
FED. RD. DIV. NO.	STATE	PROJECT NO.	HIGHWAY NO.		
6	TEXAS	STP 2021(929)TP	N/A		
STATE DISTRICT	COUNTY	CONTROL NO.	SECTION NO.	JOB NO.	SHEET NO.
FTW	TARRANT	0902	90	082	111

6/14/2021  
  
 Joshua Wright

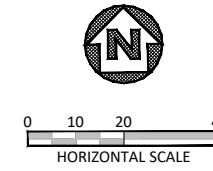


FULL PATH: G:\Production\500\002600\2684\002\Civil\Drawings\Plot Sheets\RMVL-PLAN DR\NE 30TH ST

FILENAME: RMVL-PL-30.dwg  
 PLOTTED BY: LEE MONASTESSE  
 PLOTTED WITH: \_DWG TO PDF.PC3



**NE 30TH STREET**



**NOTE:**

RETURN ALL REMOVED SIGNS TO TPW FIELD OPERATIONS SUPERVISOR SIDNEY RUTTER (SIDNEY.RUTTER@FORTWORTHTEXAS.GOV) AT 5001 JAMES AVE, FORT WORTH, TX.

ITEMS NOT CALLED OUT FOR REMOVAL SHALL BE CLEARED & REMOVED AS REQUIRED AND DIRECTED BY THE ENGINEER. COST TO BE INCLUDED IN PRICE BID FOR SITE CLEARING. EXISTING SITE CONDITIONS MAY VARY FROM THOSE SHOWN ON THESE PLANS.

**REMOVAL LEGEND**

- TREES TO BE REMOVED
- REMOVAL ITEMS
- ABANDONEMENT ITEMS
- ASPHALT REMOVAL
- GRAVEL REMOVAL
- CONCRETE REMOVAL
- SIDEWALK/ RAMP REMOVAL
- CONCRETE DRIVE REMOVAL

**EXISTING NE 30TH ST. OBSTRUCTION CONFLICTS**

NO.	STATION, OFFSET	DESCRIPTION	NOTE
1	1215+26.62, 28.57 LT	TREE	PROTECT
2	1215+27.14, 26.89 LT	TREE STUMP	REMOVE (16" CALIPER)
3	1215+33.83, 26.78 LT	TREE	REMOVE (CLUSTER)
4	1215+61.05, 29.88 LT	SSMH	PROTECT

DATE	BY	REV	REVISION

**DUNAWAY** (TX REG. F-1114) 550 Bailey Avenue Suite 400 Fort Worth, TX 76107 817-335-1121

**FORT WORTH**  
 PROJ NO. 101264 FILE NO. K-2630

Texas Department of Transportation  
 © 2021

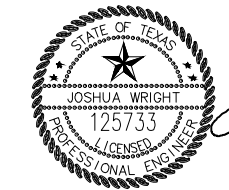
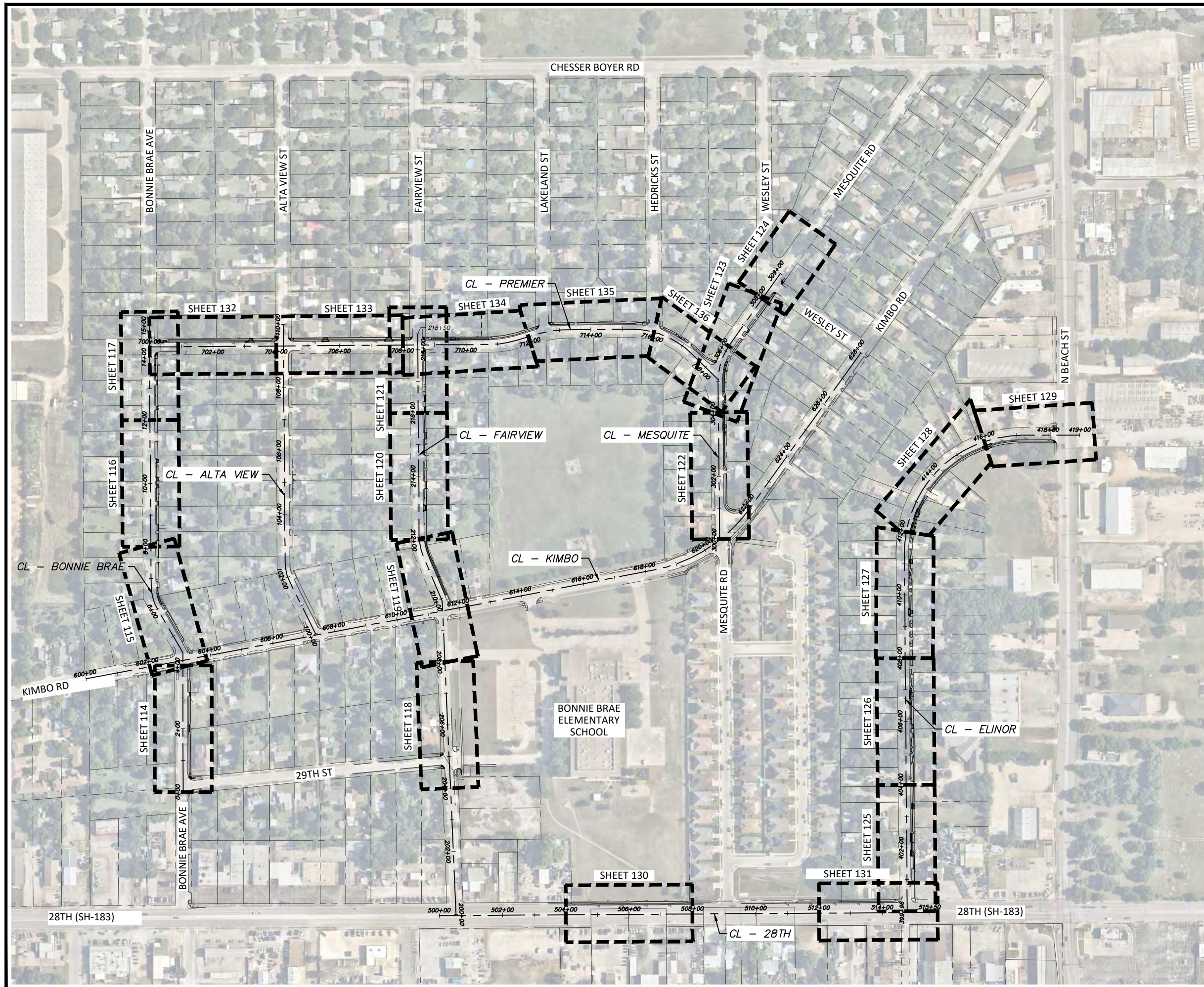
2018 SAFE ROUTES TO SCHOOL IMPROVEMENTS

**NE 30TH STREET  
 REMOVALS AND UTILITY ADJUSTMENTS  
 STA. 1213+50.00 TO STA. 1217+50.00  
 DIAMOND HILL ELEMENTARY SCHOOL**

FED. RD. DIV. NO.	STATE	PROJECT NO.		HIGHWAY NO.	
6	TEXAS	STP 2021(929)TP		N/A	
STATE DISTRICT	COUNTY	CONTROL NO.	SECTION NO.	JOB NO.	SHEET NO.
FTW	TARRANT	0902	90	082	112

6/14/2021





Joshua Wright  
 PROJECT ENGINEER  
 6/11/2021  
 DATE

DATE	BY	REV	REVISION

**DUNAWAY** 550 Bailey Avenue  
 Suite 400  
 Fort Worth, TX 76107  
 (TX REG #1114) 817-335-1121

**FORT WORTH**  
 PROJ NO. 101264 FILE NO. K-2630

Texas Department of Transportation  
 © 2021  
 2018 SAFE ROUTES TO SCHOOL IMPROVEMENTS

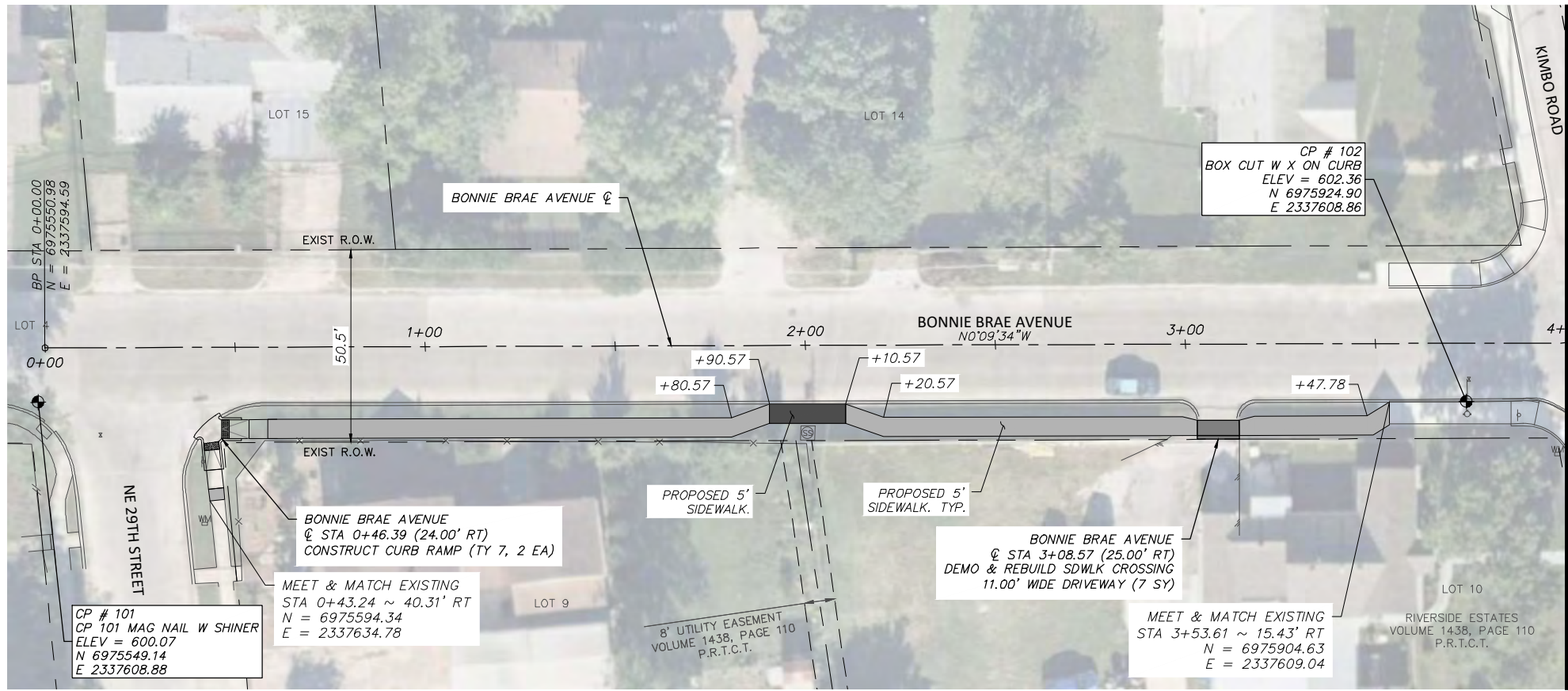
**PAVING PLAN & PROFILE**  
**PROJECT P&P KEY MAP**  
**BONNIE BRAE ELEMENTARY SCHOOL**

FED. RD. DIV. NO.	STATE	PROJECT NO.	HIGHWAY NO.		
6	TEXAS	STP2021(929)TP	VA		
STATE DISTRICT	COUNTY	CONTROL NO.	SECTION NO.	JOB NO.	SHEET NO.
FTW	TARRANT	0902	90	082	113



FULL PATH: G:\Production\500\002600\2684\002\Civil\Drawings\Plot Sheets\PLAN & PROFILE BB\BONNIE BRAE AVE

FILENAME: ROAD-PP-BB.dwg  
PLOTTED BY: LEE MONASTESSE  
PLOTTED WITH: \_DWG TO PDF.PC3

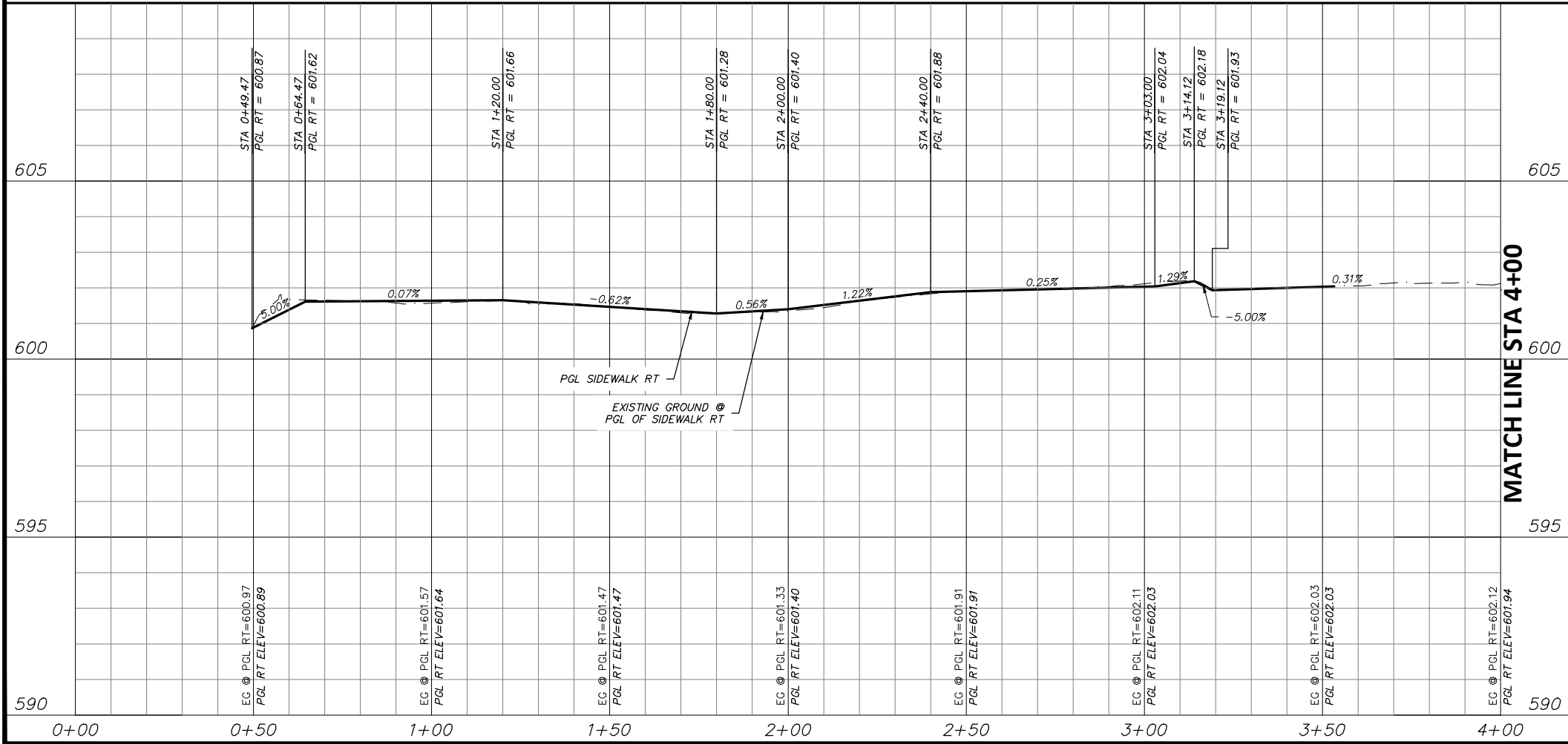


**BONNIE BRAE AVENUE**

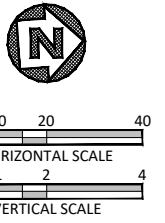
MATCH LINE STA 4+00

**LEGEND**

	PROPOSED 6" CONC. DRIVEWAY PAVEMENT
	PROPOSED 4" SETBACK SIDEWALK (5' WIDE)
	PROPOSED 4" SIDEWALK ADJACENT TO BACK OF CURB (6' WIDE)
	PROPOSED HMAC
	PROPOSED CONC. SIDEWALK (SPECIAL) (RETAIN. WALL) - PLAN
	PROPOSED CONC. SIDEWALK (SPECIAL) (RETAIN. WALL) - PROFILE



MATCH LINE STA 4+00



STATE OF TEXAS  
  
 JOSHUA WRIGHT  
 PROJECT ENGINEER  
 6/11/2021  
 DATE

- NOTES:**
- VERTICAL PROFILES PROVIDED FOR GENERAL REFERENCE. CONTRACTOR SHALL LAY VERTICAL GRADE PER THESE PLANS AND AS NECESSARY DUE TO VARYING SITE CONDITIONS AT THE DIRECTION OF THE ENGINEER.
  - NEW SIDEWALK AND RAMPS TO ADHERE TO ALL APPLICABLE ADA, TAS, AND PROWAG REGULATIONS.
  - EXISTING DRIVEWAYS TO REMAIN HAVE 2% OR LESS CROSS SLOPE 48" WIDE OR GREATER AT SIDEWALK CROSSING LOCATION. PROPOSED SIDEWALK TO MEET AND MATCH EXISTING PAVEMENT AT THESE DRIVES.
  - EXISTING METERS & VALVES WITHIN LIMITS OF FINISHED GRADE TO BE ADJUSTED VERTICALLY TO MATCH. METERS & VALVES SHALL NOT BE PARTIALLY LOCATED IN DRIVEWAYS OR SIDEWALKS. A 6" CONCRETE APRON TO BE CONSTRUCTED AROUND THESE STRUCTURES. REFER TO DETAIL, SHEET 17.
  - CONTRACTOR SHALL CONFIRM LOCATION OF ALL EXISTING UTILITIES AND ELEVATIONS PRIOR TO CONSTRUCTION.

DATE	BY	REV	REVISION

**DUNAWAY** 550 Bailey Avenue  
 Suite 400  
 Fort Worth, TX 76107  
 817-335-1121  
 (TX REG #1114)

**FORT WORTH**

PROJ NO. 101264 FILE NO. K-2630

Texas Department of Transportation  
 © 2021

2018 SAFE ROUTES TO SCHOOL IMPROVEMENTS

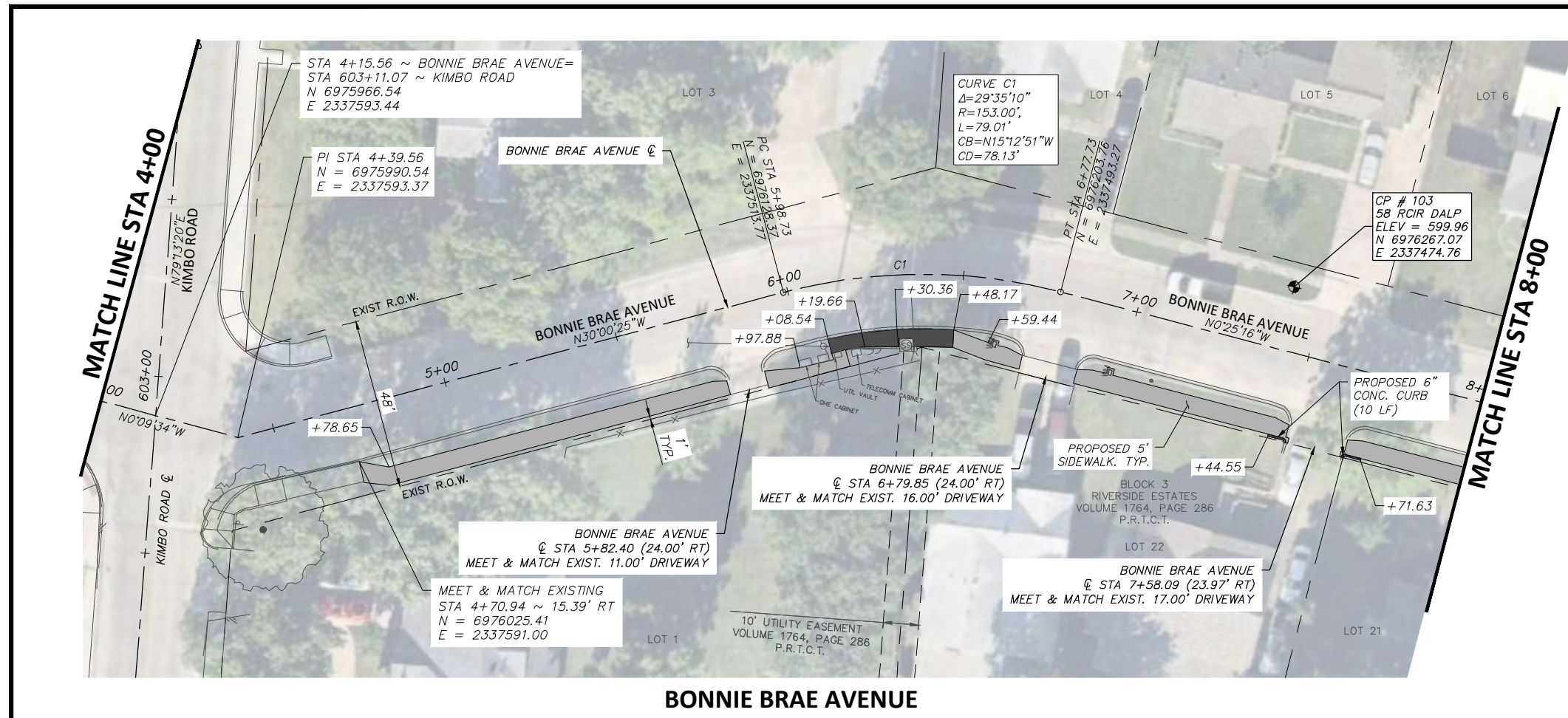
**BONNIE BRAE AVENUE  
 PAVING PLAN & PROFILE  
 STA. 0+00.00 TO STA. 4+00.00  
 BONNIE BRAE ELEMENTARY SCHOOL**

FED. RD. DIV. NO.	STATE	PROJECT NO.	HIGHWAY NO.
6	TEXAS	STP2021(929)TP	VA
STATE DISTRICT	COUNTY	CONTROL NO.	SECTION NO.
FTW	TARRANT	0902	90
			JOB NO.
			082
			SHEET NO.
			114



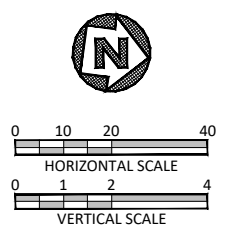
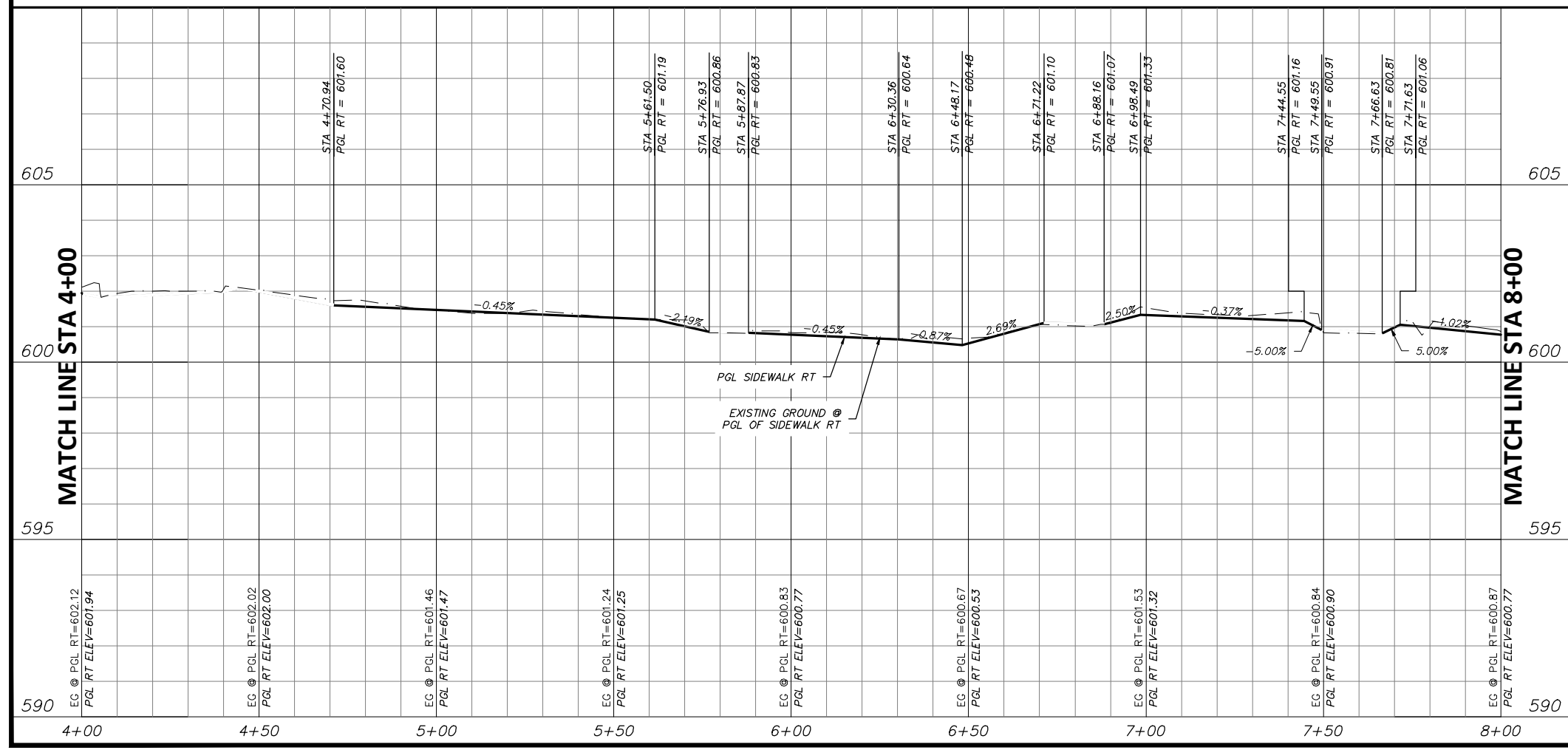
FILENAME: ROAD-PP-BB.dwg  
 PLOTTED BY: LEE MONASTESSE  
 PLOTTED WITH: \_DWG TO PDF.PC3

Full Path: G:\Production\500\002600\2684\002\Civil\Drawings\Plot Sheets\PLAN & PROFILE BB\BONNIE BRAE AVE



**LEGEND**

	PROPOSED 6" CONC. DRIVEWAY PAVEMENT
	PROPOSED 4" SETBACK SIDEWALK (5' WIDE)
	PROPOSED 4" SIDEWALK ADJACENT TO BACK OF CURB (6' WIDE)
	PROPOSED HMA
	PROPOSED CONC. SIDEWALK (SPECIAL) (RETAIN. WALL) - PLAN
	PROPOSED CONC. SIDEWALK (SPECIAL) (RETAIN. WALL) - PROFILE



STATE OF TEXAS  
 JOSHUA WRIGHT  
 LICENSED PROFESSIONAL ENGINEER  
 125733  
 PROJECT ENGINEER  
 6/11/2021  
 DATE

- NOTES:**
- VERTICAL PROFILES PROVIDED FOR GENERAL REFERENCE. CONTRACTOR SHALL LAY VERTICAL GRADE PER THESE PLANS AND AS NECESSARY DUE TO VARYING SITE CONDITIONS AT THE DIRECTION OF THE ENGINEER.
  - NEW SIDEWALK AND RAMPS TO ADHERE TO ALL APPLICABLE ADA, TAS, AND PROWAG REGULATIONS.
  - EXISTING DRIVEWAYS TO REMAIN HAVE 2% OR LESS CROSS SLOPE 48" WIDE OR GREATER AT SIDEWALK CROSSING LOCATION. PROPOSED SIDEWALK TO MEET AND MATCH EXISTING PAVEMENT AT THESE DRIVES.
  - EXISTING METERS & VALVES WITHIN LIMITS OF FINISHED GRADE TO BE ADJUSTED VERTICALLY TO MATCH. METERS & VALVES SHALL NOT BE PARTIALLY LOCATED IN DRIVEWAYS OR SIDEWALKS. A 6" CONCRETE APRON TO BE CONSTRUCTED AROUND THESE STRUCTURES. REFER TO DETAIL, SHEET 17.
  - CONTRACTOR SHALL CONFIRM LOCATION OF ALL EXISTING UTILITIES AND ELEVATIONS PRIOR TO CONSTRUCTION.

DATE	BY	REV	REVISION

**DUNAWAY** (TX REG #1114)  
 550 Bailey Avenue  
 Suite 400  
 Fort Worth, TX 76107  
 817-335-1121

**FORT WORTH**

PROJ NO. 101264 FILE NO. K-2630

Texas Department of Transportation  
 © 2021

2018 SAFE ROUTES TO SCHOOL IMPROVEMENTS

**BONNIE BRAE AVENUE  
 PAVING PLAN & PROFILE  
 STA. 4+00.00 TO STA. 8+00.00  
 BONNIE BRAE ELEMENTARY SCHOOL**

FED. RD. DIV. NO.	STATE	PROJECT NO.	HIGHWAY NO.
6	TEXAS	STP2021(929)TP	VA
STATE DISTRICT	COUNTY	CONTROL NO.	SECTION NO.
FTW	TARRANT	0902	90
			JOB NO.
			082
			SHEET NO.
			115

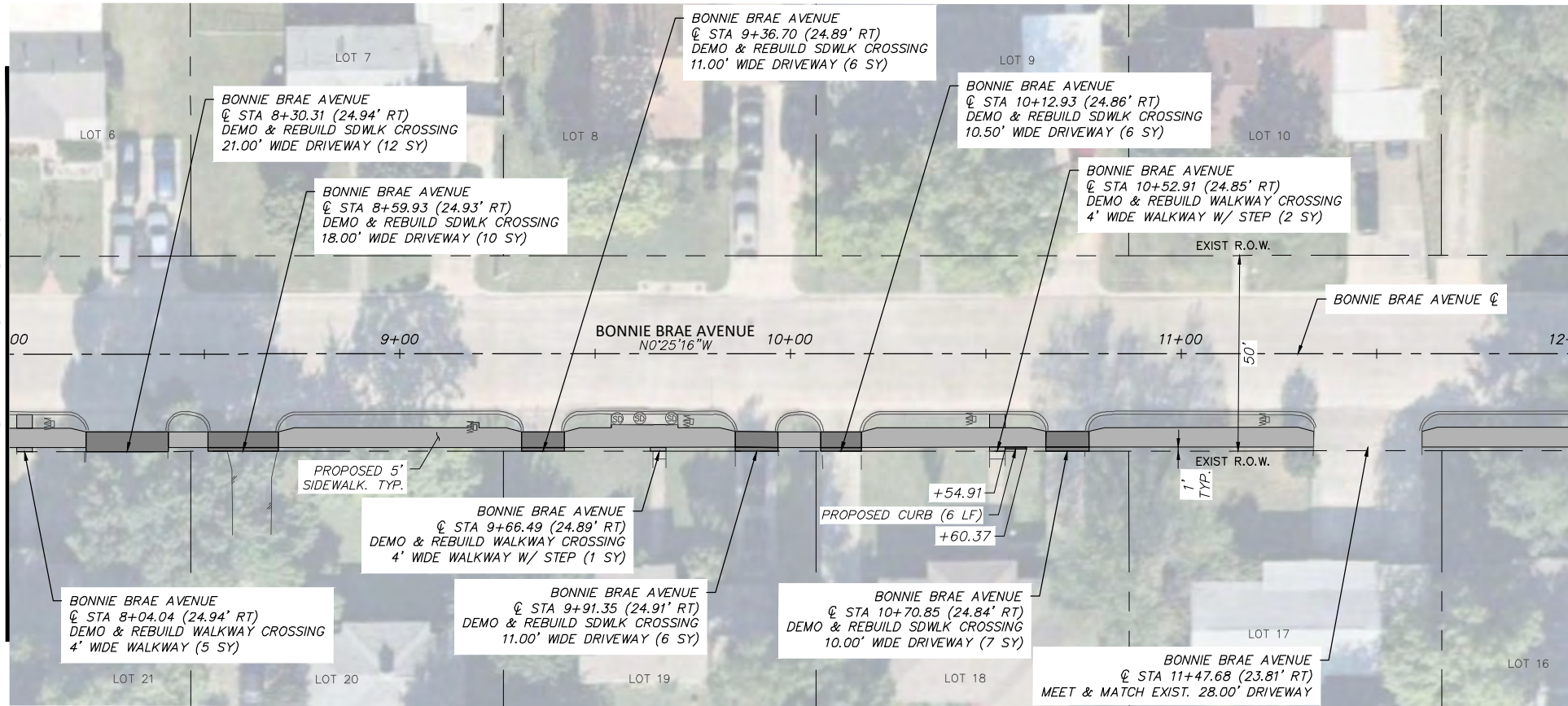


FULL PATH: G:\Production\500\002600\2684\002\Civil\Drawings\Plot Sheets\PLAN & PROFILE BB\BONNIE BRAE AVE

FILENAME: ROAD-PP-BB.dwg  
 PLOTTED BY: LEE MONASTESSE  
 PLOTTED WITH: \_DWG TO PDF.PC3

MATCH LINE STA 8+00

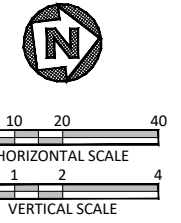
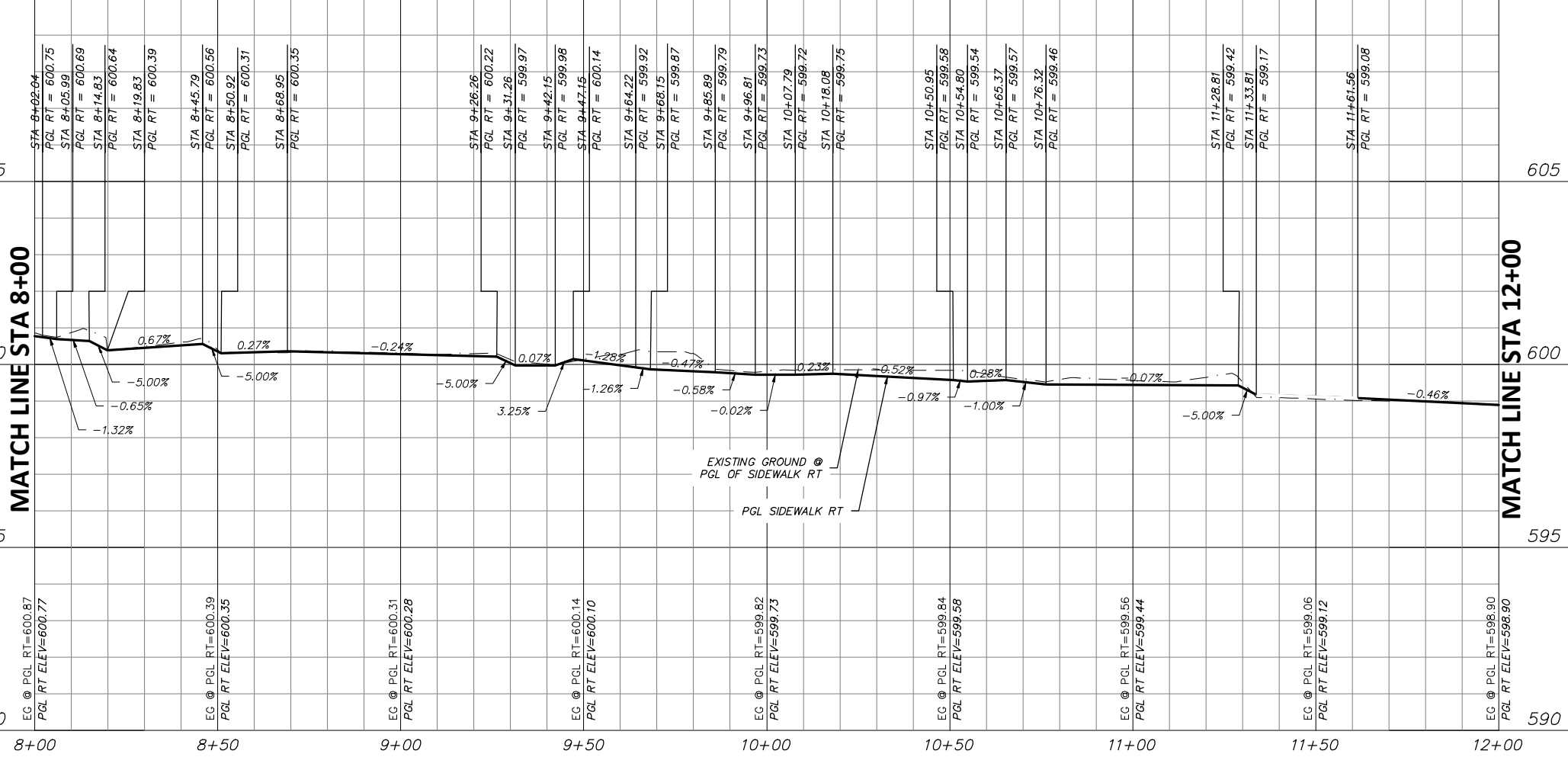
MATCH LINE STA 12+00



**BONNIE BRAE AVENUE**

**LEGEND**

- PROPOSED 6" CONC. DRIVEWAY PAVEMENT
- PROPOSED 4" SETBACK SIDEWALK (5' WIDE)
- PROPOSED 4" SIDEWALK ADJACENT TO BACK OF CURB (6' WIDE)
- PROPOSED HMA
- PROPOSED CONC. SIDEWALK (SPECIAL) (RETAIN. WALL) - PLAN
- PROPOSED CONC. SIDEWALK (SPECIAL) (RETAIN. WALL) - PROFILE



STATE OF TEXAS  
 JOSHUA WRIGHT  
 LICENSED PROFESSIONAL ENGINEER  
 125733  
 PROJECT ENGINEER  
 6/11/2021  
 DATE

**NOTES:**

1. VERTICAL PROFILES PROVIDED FOR GENERAL REFERENCE. CONTRACTOR SHALL LAY VERTICAL GRADE PER THESE PLANS AND AS NECESSARY DUE TO VARYING SITE CONDITIONS AT THE DIRECTION OF THE ENGINEER.
2. NEW SIDEWALK AND RAMPS TO ADHERE TO ALL APPLICABLE ADA, TAS, AND PROWAG REGULATIONS.
3. EXISTING DRIVEWAYS TO REMAIN HAVE 2% OR LESS CROSS SLOPE 48" WIDE OR GREATER AT SIDEWALK CROSSING LOCATION. PROPOSED SIDEWALK TO MEET AND MATCH EXISTING PAVEMENT AT THESE DRIVES.
4. EXISTING METERS & VALVES WITHIN LIMITS OF FINISHED GRADE TO BE ADJUSTED VERTICALLY TO MATCH. METERS & VALVES SHALL NOT BE PARTIALLY LOCATED IN DRIVEWAYS OR SIDEWALKS. A 6" CONCRETE APRON TO BE CONSTRUCTED AROUND THESE STRUCTURES. REFER TO DETAIL, SHEET 17.
5. CONTRACTOR SHALL CONFIRM LOCATION OF ALL EXISTING UTILITIES AND ELEVATIONS PRIOR TO CONSTRUCTION.

DATE	BY	REV	REVISION

**DUNAWAY** 550 Bailey Avenue  
 Suite 400  
 Fort Worth, TX 76107  
 (TX REG #1114) 817-335-1121

**FORT WORTH**

PROJ NO. 101264 FILE NO. K-2630

Texas Department of Transportation  
 © 2021

2018 SAFE ROUTES TO SCHOOL IMPROVEMENTS

**BONNIE BRAE AVENUE  
 PAVING PLAN & PROFILE  
 STA. 8+00.00 TO STA. 12+00.00  
 BONNIE BRAE ELEMENTARY SCHOOL**

FED. RD. DIV. NO.	STATE	PROJECT NO.	HIGHWAY NO.
6	TEXAS	STP2021(929)TP	VA

STATE DISTRICT	COUNTY	CONTROL NO.	SECTION NO.	JOB NO.	SHEET NO.
FTW	TARRANT	0902	90	082	116