



# **FORT WORTH WATER SYSTEM EXPANSION AND CAPACITY IMPROVEMENTS**

**February 18, 2025**

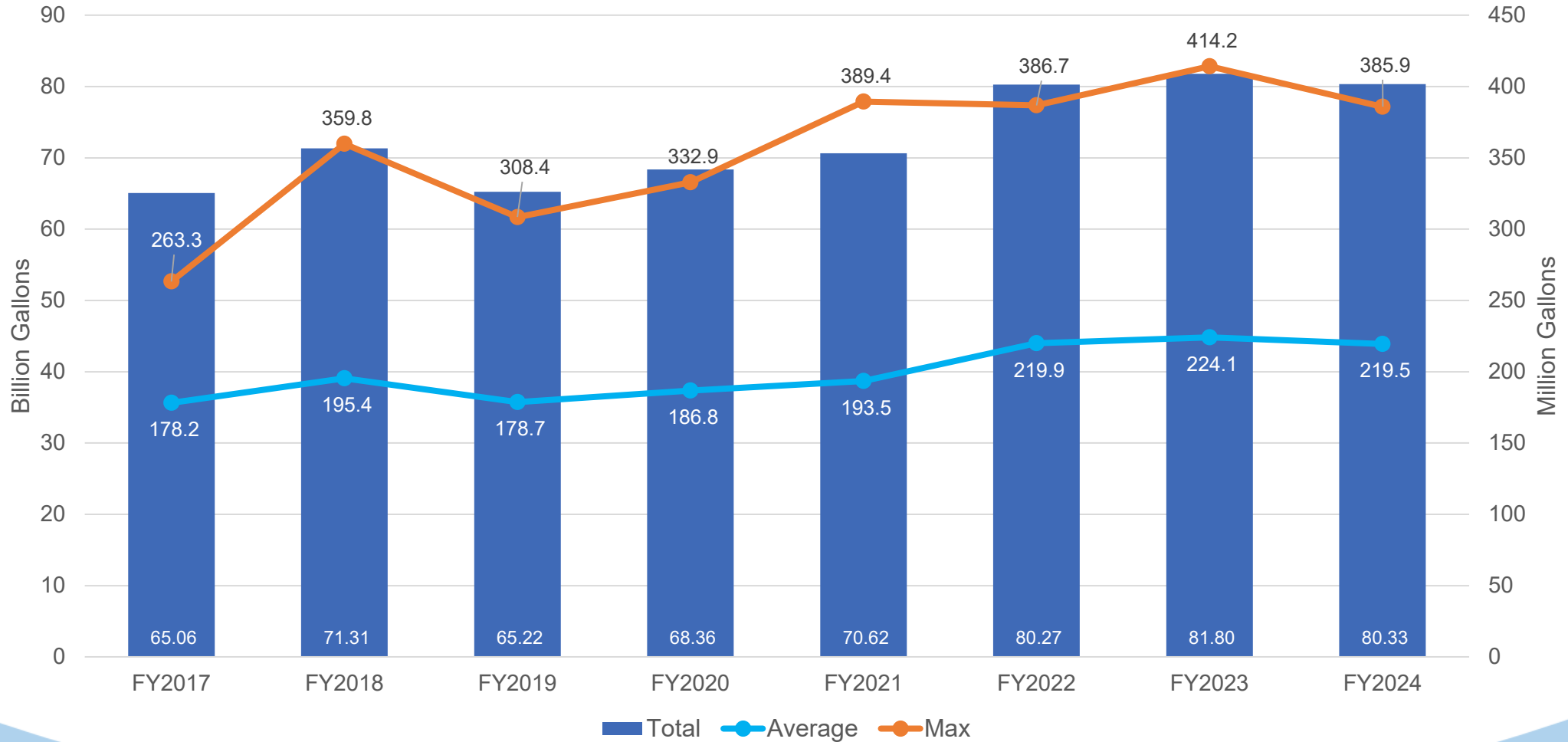
# Agenda >>>>

- **Usage, Population, and Service Area Growth**
- **Infrastructure Improvements - West and North Water Systems**
- **Water Conservation Ordinance**



# Water Usage 2017-2024

## Produced Water



# Water/Wastewater Service Population & Employment (Retail + Wholesale)

## Water Service Area Projections

Year	Service Area Population			Service Area Employment		
	2025	2035	2045	2025	2035	2045
City of Fort Worth	1,017,863	1,264,157	1,459,826	683,904	775,564	856,104
Wholesale Customers	433,898	507,653	549,529	239,101	290,213	316,353
<b>TOTAL</b>	<b>1,451,761</b>	<b>1,771,810</b>	<b>2,009,355</b>	<b>923,005</b>	<b>1,065,777</b>	<b>1,172,457</b>
<b>Annual Growth Rate</b>	--	2.0%	1.3%	--	1.4%	1.0%

## Wastewater Service Area Projections

Year	Service Area Population			Service Area Employment		
	2025	2035	2045	2025	2035	2045
City of Fort Worth	1,017,863	1,264,157	1,459,826	683,904	775,564	856,104
Wholesale Customers	371,547	436,431	484,452	168,165	196,475	227,501
<b>TOTAL</b>	<b>1,389,410</b>	<b>1,700,588</b>	<b>1,944,278</b>	<b>852,069</b>	<b>972,039</b>	<b>1,083,605</b>
<b>Annual Growth Rate</b>	--	2.0%	1.3%	--	1.3%	1.1%



# Water System Equivalent Meters

$$\text{Population/Employment Growth 2025-2035} \div \text{Equivalent Meter Factor} = \text{Increase in Equivalent Service Meters}$$

Description	Total 2025 (A)	Total 2035 (B)	Equivalent Meter Factor (C)	Increase in Equivalent Service Meters ( [B – A] / C )
Fort Worth Population	1,017,863	1,264,157	2.63	93,648
Fort Worth Employment	683,904	775,564	5.42	16,911
Wholesale Population	433,898	507,653	2.47	29,860
Wholesale Employment	239,101	290,213	2.88	17,747
<b>TOTAL EQUIVALENT METER GROWTH</b>				<b>158,166</b>

# Wastewater System Equivalent Meters

$$\text{Population/Employment Growth 2025-2035} \div \text{Equivalent Meter Factor} = \text{Increase in Equivalent Service Meters}$$

Description	Total 2025 (A)	Total 2035 (B)	Equivalent Meter Factor (C)	Increase in Equivalent Service Meters ( [B – A] / C)
Fort Worth Population	1,017,863	1,264,157	2.69	91,559
Fort Worth Employment	683,904	775,564	7.28	12,591
Wholesale Population	371,547	436,431	2.87	22,608
Wholesale Employment	168,165	196,475	4.24	6,677

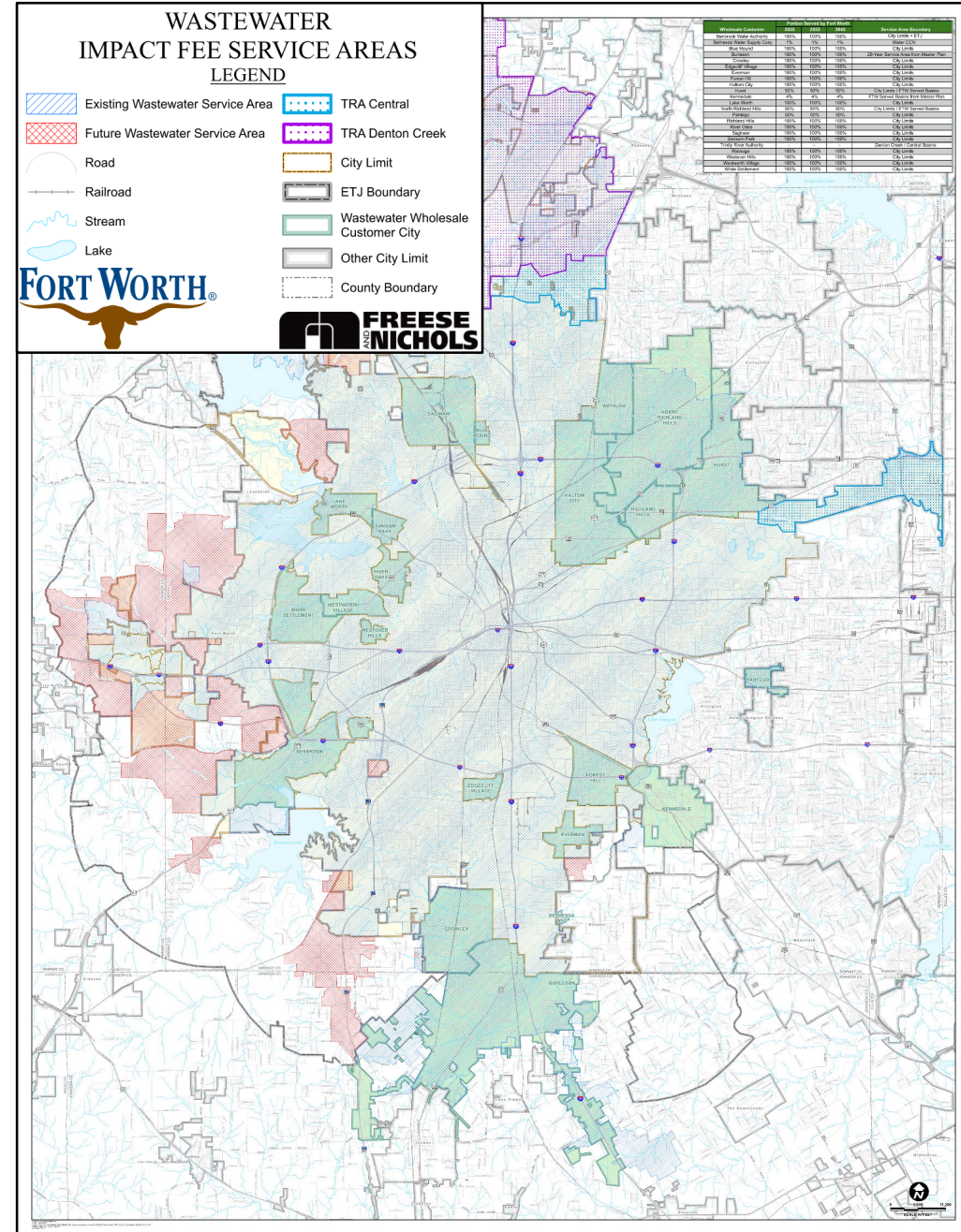
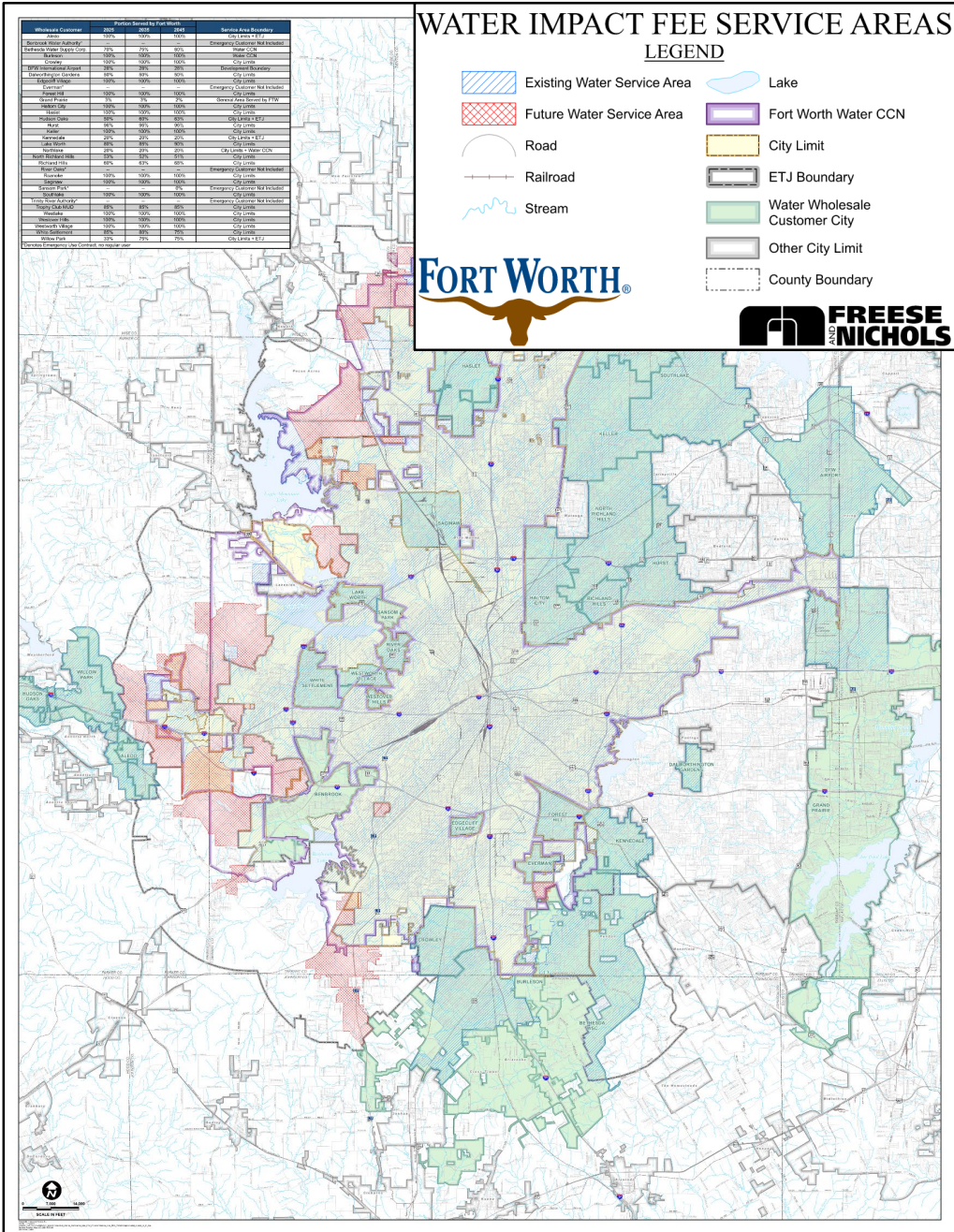
**TOTAL EQUIVALENT METER GROWTH**

**133,435**





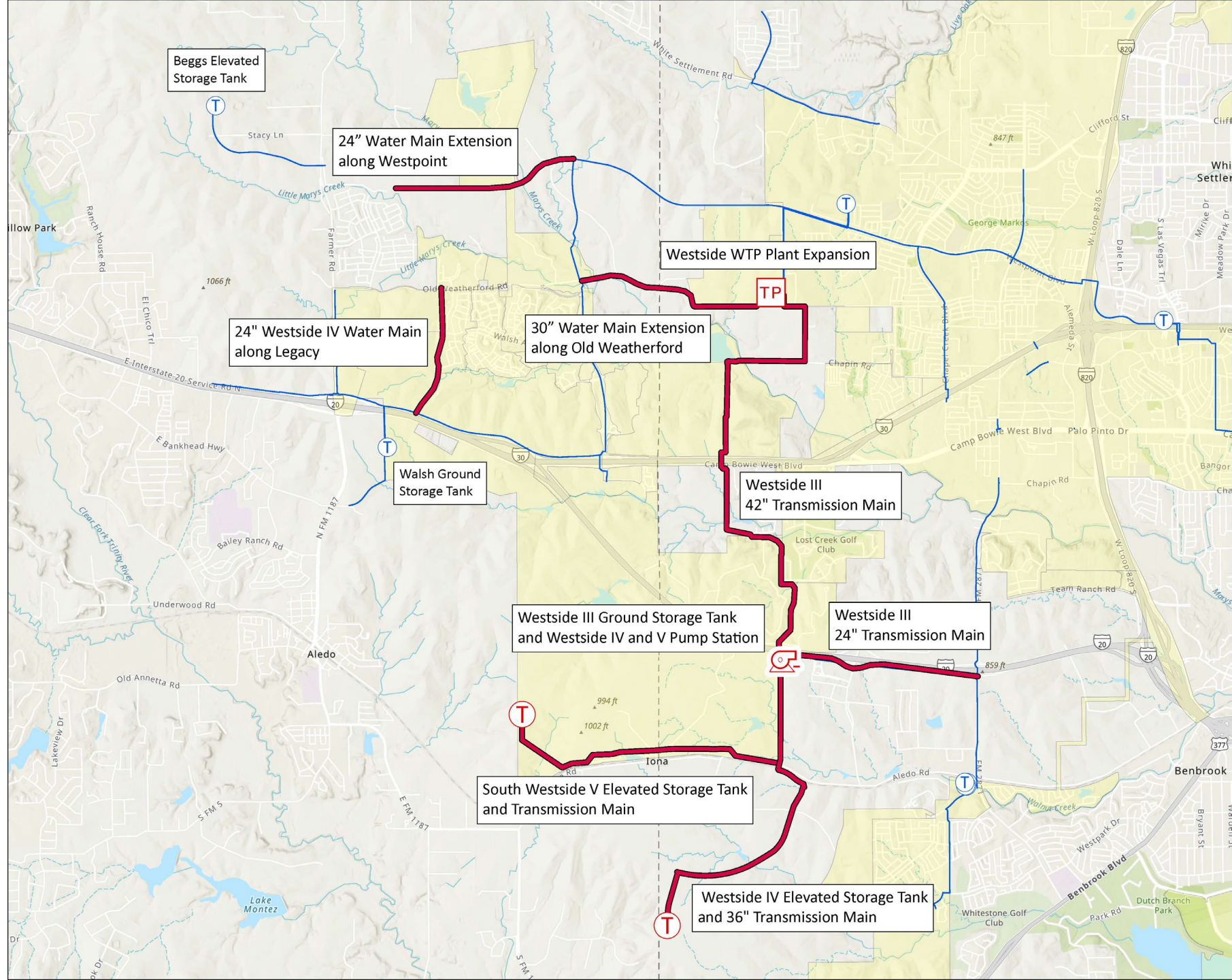
# Service Areas







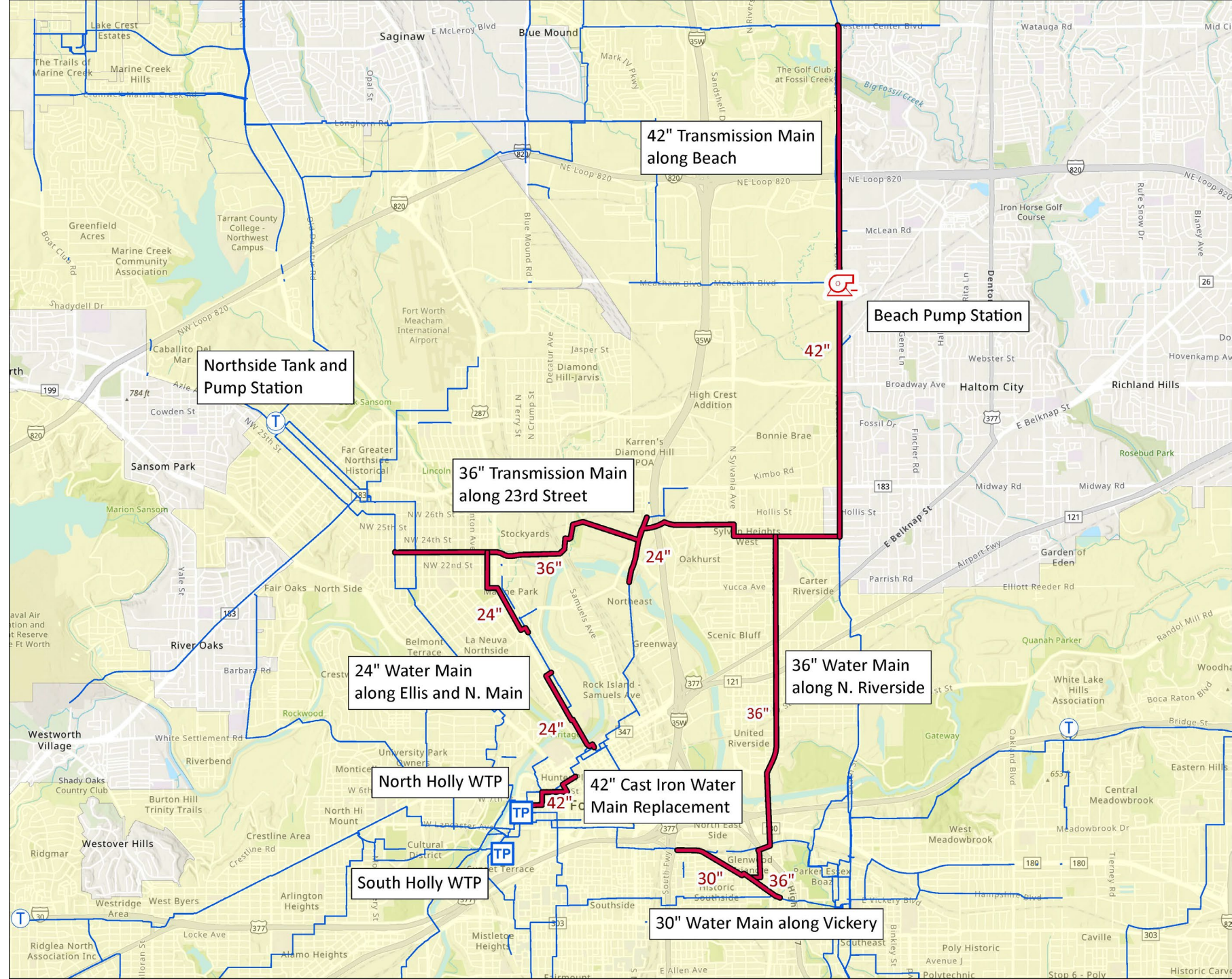
# Westside Water System Improvements







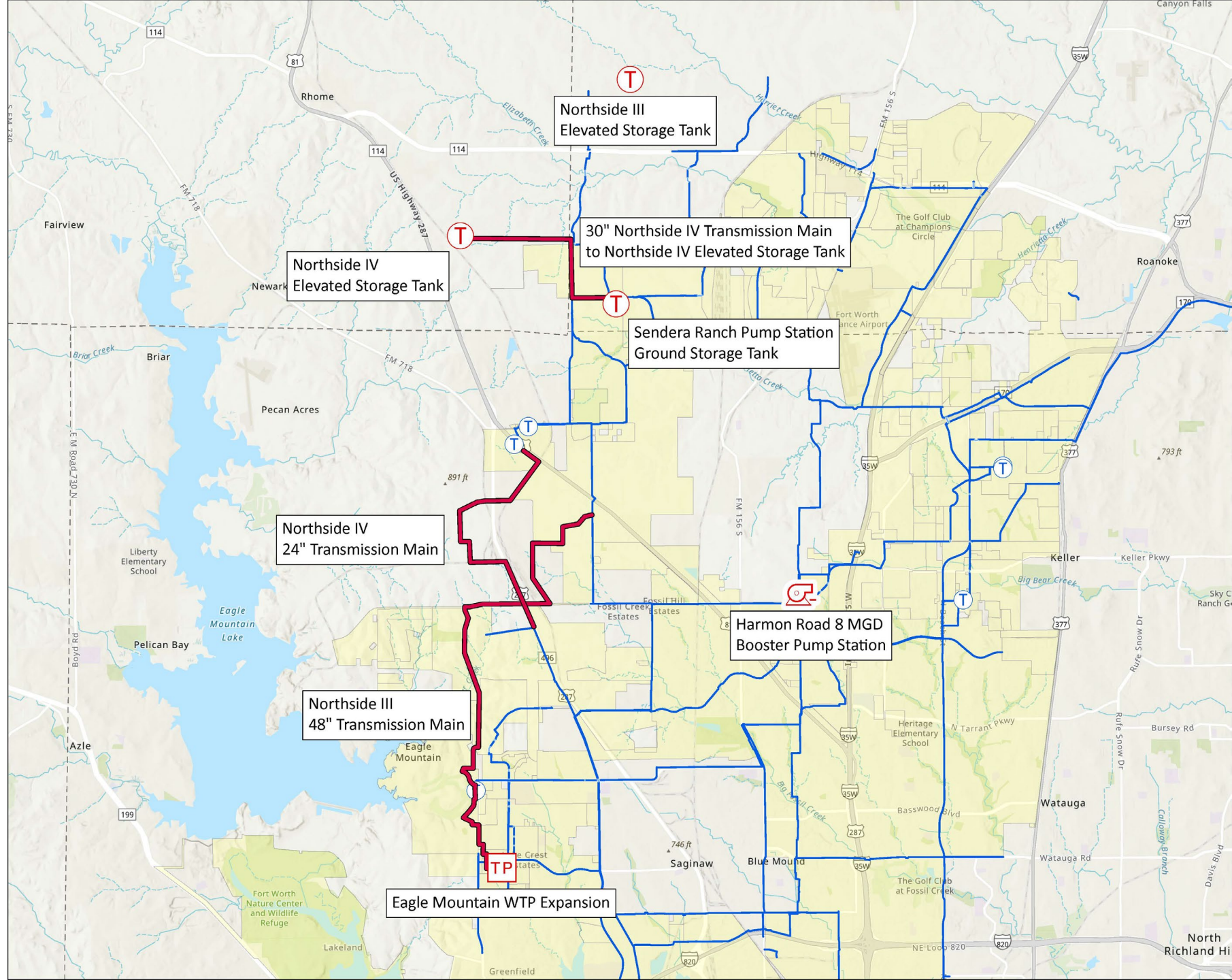
# Northside Water System Improvements







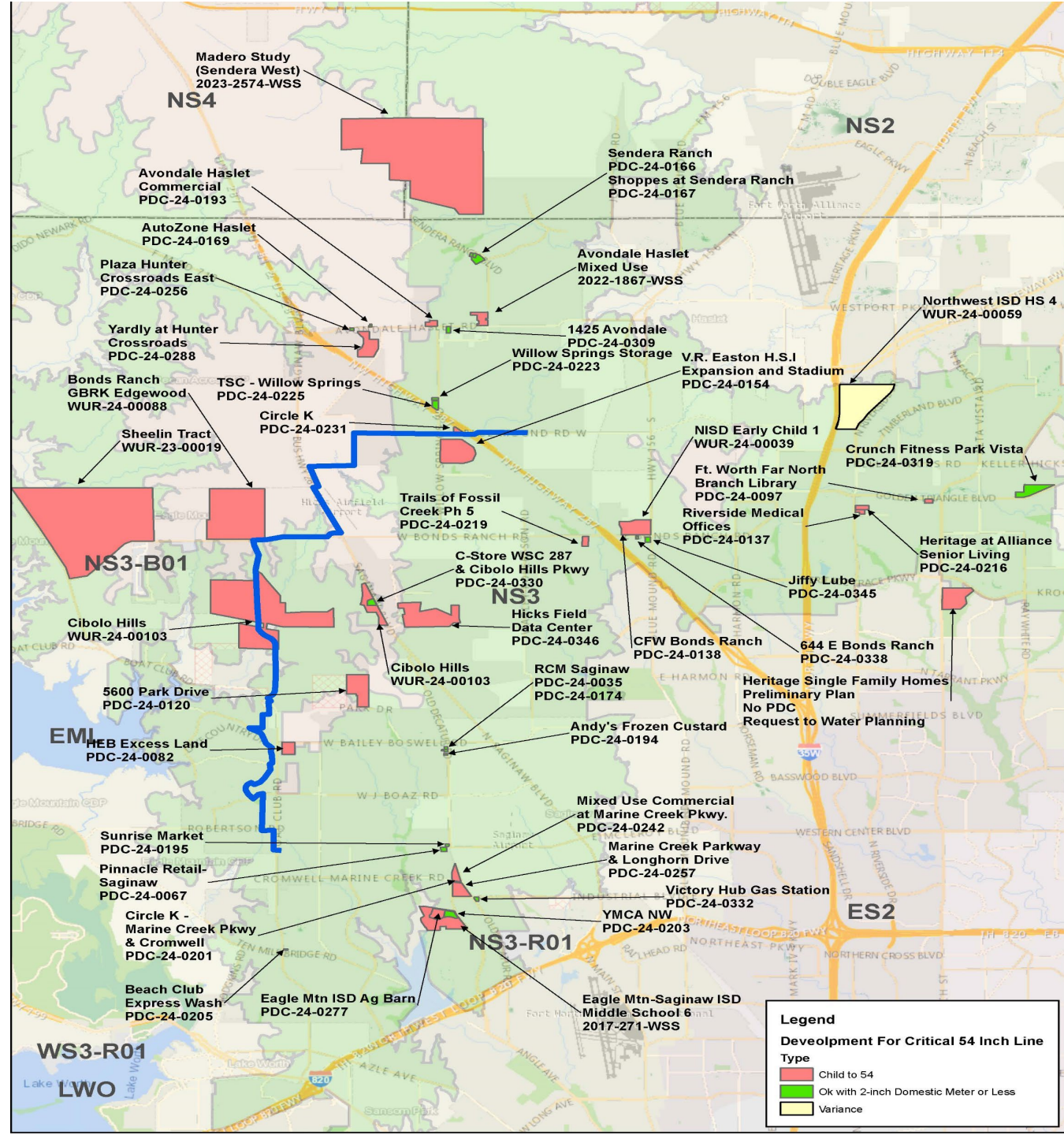
# Far Northside Water System Improvements







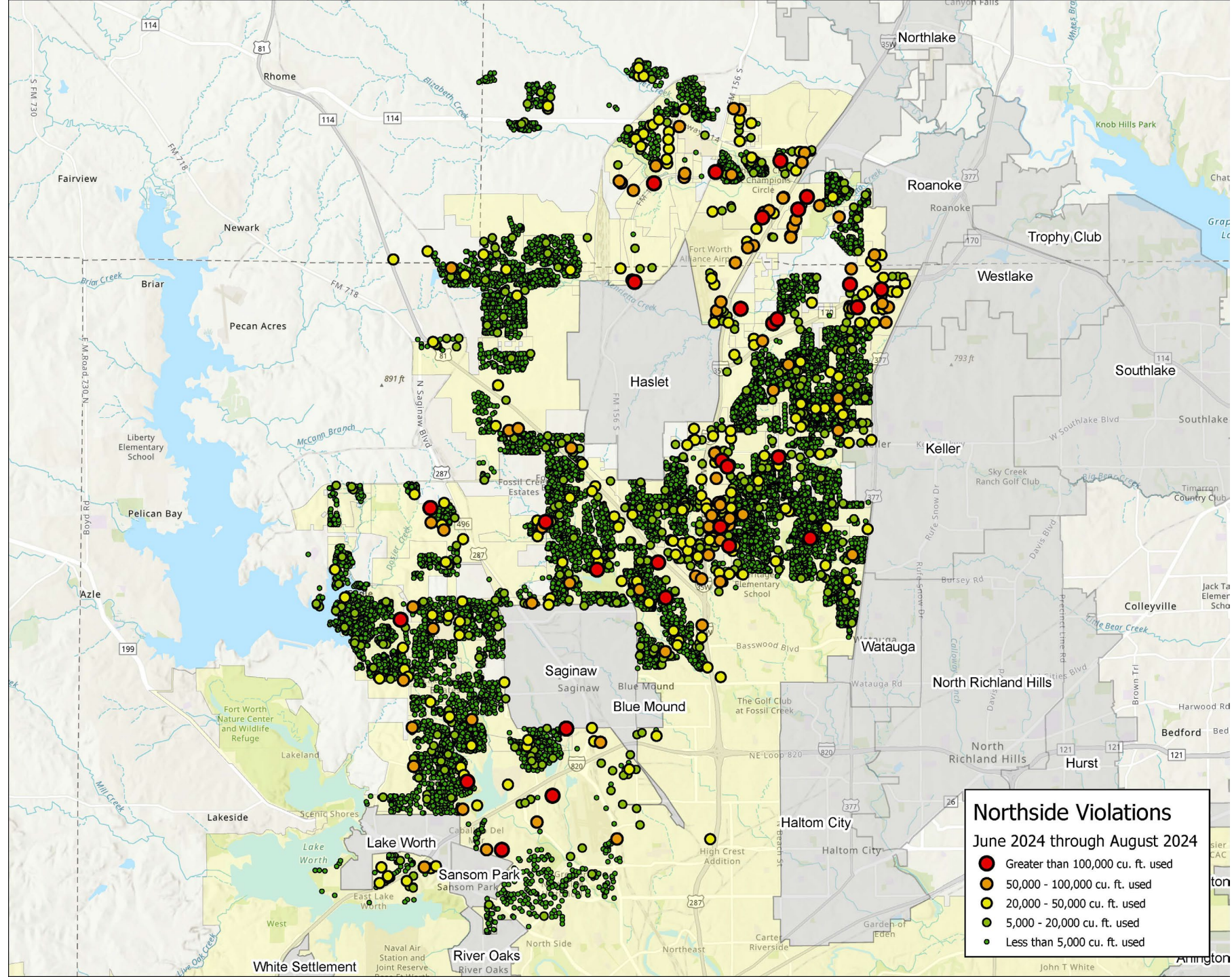
# North Fort Worth Development - 54-Inch Water Line







# 2024 Water Irrigation Ordinance Violations







# QUESTIONS?

