



Community Open House

Long Ave Pedestrian Safety Improvements Project

CPN: 104299

Project Manager: Seth Cooksey, PE

Project Engineer: Kimley-Horn and Associates, Inc.

September 27, 2023

Agenda

- **Project Background and Limits**
- **Existing Condition and Proposed Improvements**
- **Schedule**
- **Questions**



Project Background

- Project is located on Long Ave between Azle Ave and Angle Ave.
- City conducted High Injury Network (HIN) evaluation and developed improvements recommendation on March 2022
- Selected Kimley-Horn to design the improvements in July 2023
- The project will be funded through ARPA funds.



Existing Conditions

- **Long Ave is Four Lane Divided Road.**
- **Sidewalk on both sides throughout the project locations with an exception of section between 33rd and 35th Street on the north side**
- **Existing Signalized Intersection at Azle Avenue and Long Avenue**
- **Existing median openings at 27th, 28th, Loraine, 29th, 30th, 31st, 32nd, 33rd, 34th, and 35th Streets**
- **Midblock Crossing at 32nd and 33rd Streets at Dolores Huerta Elementary**

Summary of Proposed Improvements

- **Closure of Sidewalk Gap Between 33rd and 35th Streets**
- **Upgraded Traffic Signal at Azle Avenue**
- **Closure of Median Openings at 27th, Loraine, 30th, and 34th Streets**
- **Installation of Left Turn Lanes at 28th, 29th, 31st, 33rd, and 35th Streets**
- **Installation of a High Visibility Crosswalk at either 32nd or 33rd Street**
- **Closure of the Second McKinley Avenue Leg SE of the 35th Street Intersection**
- **Traffic Signal Installation at 35th Street Intersection**

Existing Configuration at Long Ave and Azle Ave



Existing Conditions

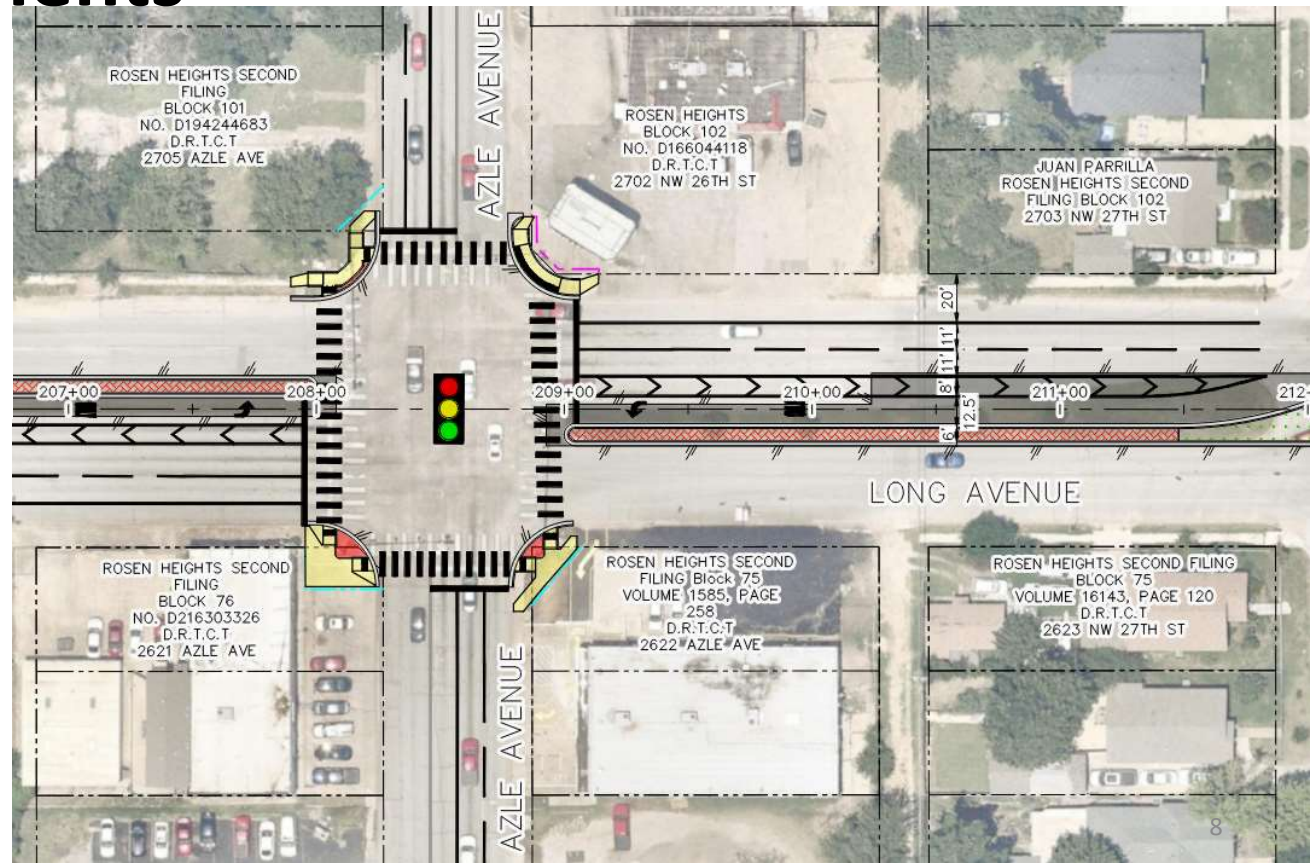




Proposed Improvements

Proposed Improvements Include:

- Upgrade traffic signal
- Provide zero offset left turn lane
- Provide stamped concrete median
- Provide ADA compliant curb ramp, crosswalk and pedestrian push buttons.



Existing Configuration Long Ave and 35th Street



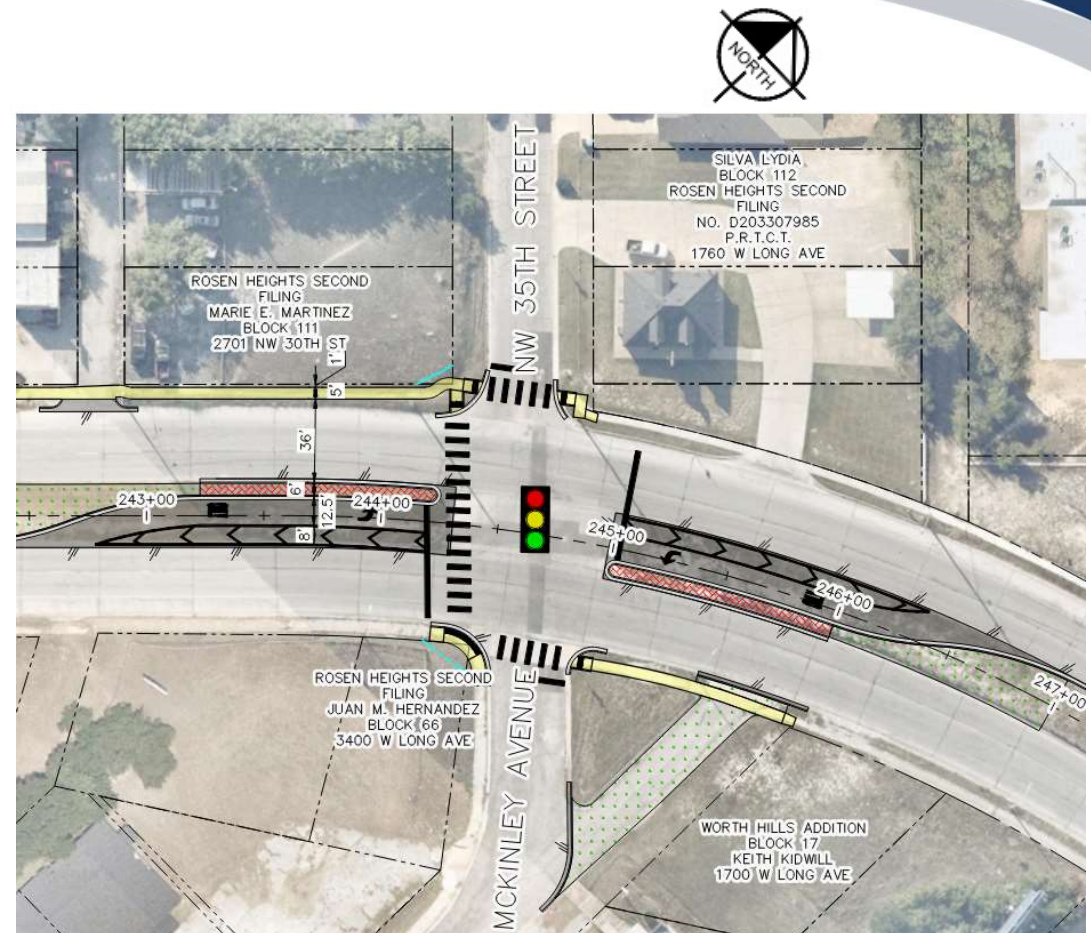
Existing Conditions



Proposed Improvements

Proposed Improvements Include:

- Install new traffic signal
- Provide zero offset left turn lanes along Long Ave
- Install stamped concrete median
- Provide ADA compliant curb ramp, crosswalk and pedestrian push buttons.
- Close 2nd leg of McKinley Ave to simplify intersection geometry.

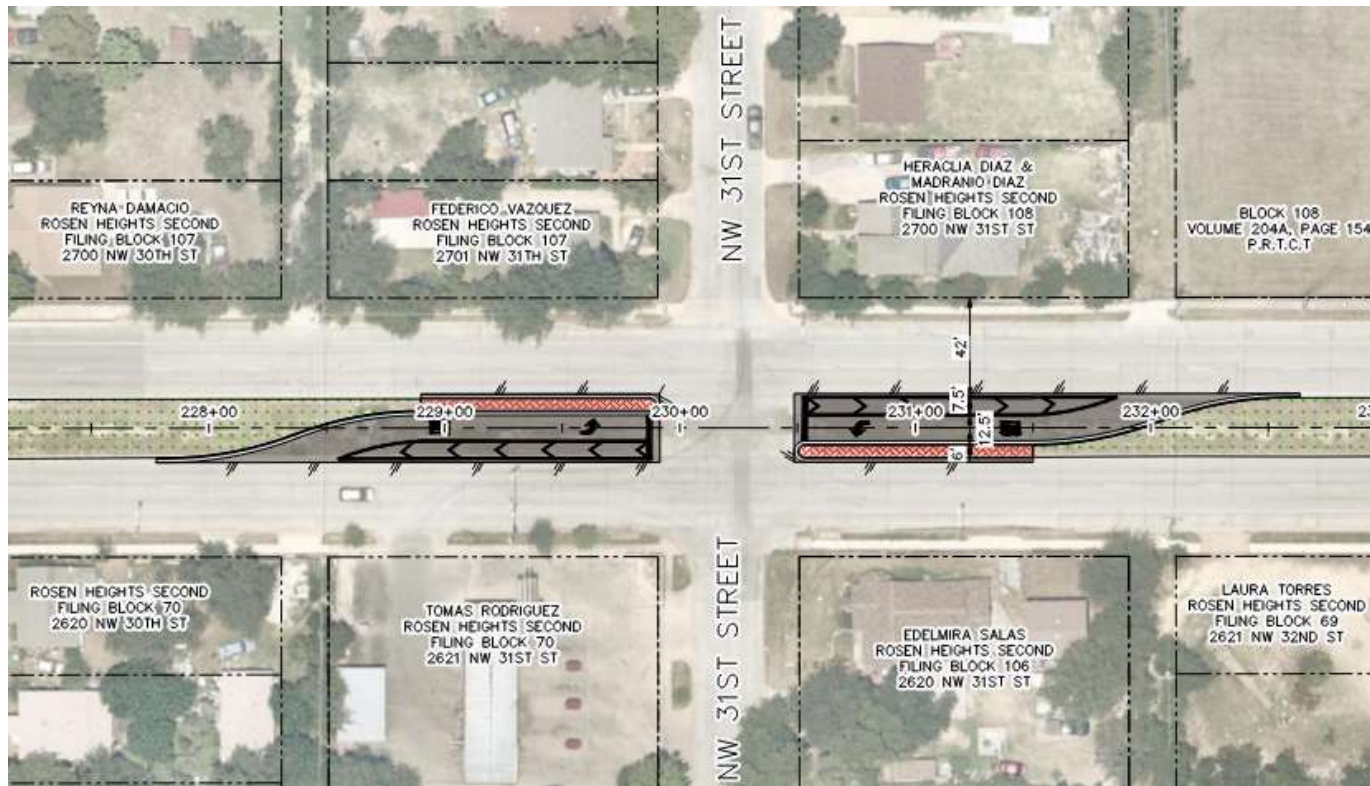


Typical Left Turn Lane Installation



Proposed Locations:

- 28th Street
- 29th Street
- 31st Street
- 33rd Street
- 35th Street



Typical Median Opening Closure



Proposed Locations:

- 27th Street
- Loraine Street
- 30th Street
- 34th Street



Schedule

- **Long Avenue Pedestrian Safety Improvements**
 - **30% Design Submittal – October 2023**
 - **Design Complete – May 2024**
 - **Bid and Award- July 2024**
 - **Contractor Notice to Proceed – September 2024**
 - **Substantial Completion – October 2025**



Contact Information:

Seth Cooksey, PE

City Project Manager

Seth.Cooksey@fortworthtexas.gov

Office Phone: 469-236-3764

Abhishek Acharya, PE

Project Manager

Abhishek.Acharya@kimley-horn.com

Office Phone: 817-339-2297

Thank you all!!

QUESTIONS

