



### Examples of programs that qualify for tuition assistance:

- Avionic maintenance
- Automotive repair
- Beauty school
- Commercial driver
- Culinary skills
- Composite bonding
- Computer systems
- Forklift driving
- Heating, ventilation and air conditioning (HVAC)
- Manufacturing Skills Service Center (MSSC) safety training
- Medical assistant including CPR/ EKG certification
- Office careers
- Occupational Safety and Health Administration (OSHA) training
- Paralegal
- Pharmacy tech
- Phlebotomy certification
- Security installation
- Welding

... And more!



The EnVision Center is dedicated to helping individuals overcome barriers, develop job skills, and achieve financial self-sufficiency.



Fort Worth EnVision Center  
MLK Community Center  
5565 Truman Drive  
Fort Worth, TX 76112  
817-392-2591



City of Fort Worth

EnVision Center

## EnCAP Case Management PROGRAM



Creating Opportunity Through Support - From Hardship to Hope. Case management support to help you achieve financial stability and independence.



## WHO IS ELIGIBLE?



Applicants must:

- Be at least 18 years old and reside in Tarrant County
- Meet specific income eligibility guidelines including documentation of all household income.
- Provide required documentation including ID, paystubs for the past 30 days, proof of ability to work in the U.S., utility bills, and proof of residency.

## WHAT WILL BE EXPECTED OF ME?

To obtain support, applicants must work with a CAP Caseworker to monitor their progress toward the completion of training or certification to secure and maintain employment.

## HOW DO I APPLY?

### CONTACT

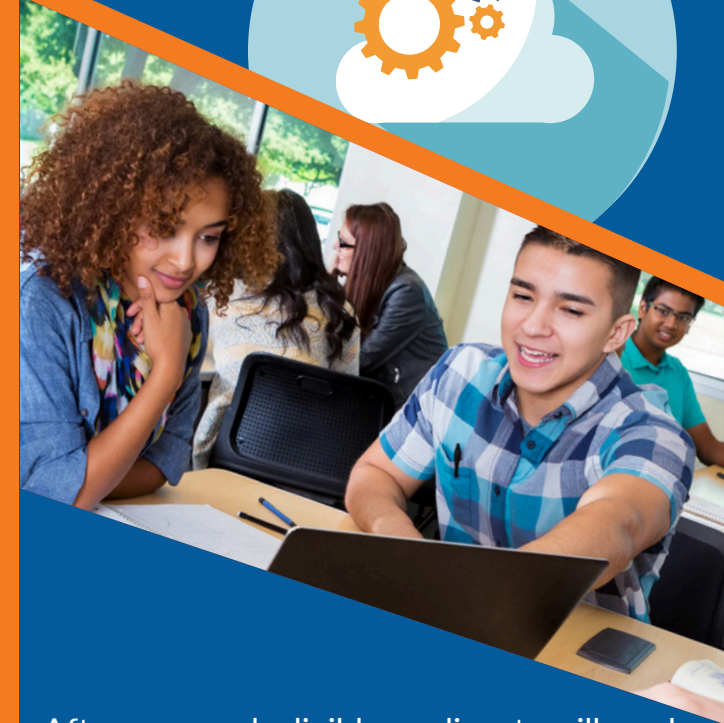
EnVision Center located at the  
MLK Community Center  
5565 Truman Drive, Fort Worth TX 76112

### EMAIL

[Suzanne.Richards@FortWorthTexas.gov](mailto:Suzanne.Richards@FortWorthTexas.gov)

### CALL

817-392-2591



After approval, eligible applicants will work with a CAP Caseworker to select an accredited educational institution that leads to employment opportunities.

No out-of-pocket expenses for those enrolled as case management clients!

Community *Action* Partners  
Serving all of Tarrant County



This initiative is offered as a program of Community Action Partners (CAP) and the EnVision Center.

We empower individuals through guided case management support and tuition assistance to gain skills, earn credentials, and achieve long-term financial stability.

Assistance can help cover tuition costs for:

- Workforce training
- Short-term certifications
- High school equivalency completion
- Apprenticeships
- Literacy education
- ESL programs

Enrolled clients may also be eligible to receive assistance with:

- Books and supplies
- Uniforms and clothing
- Laptops
- Tools and equipment
- Rent and utility assistance
- Transportation

Maximum benefit limit of \$6,000 per person.