

GATEWAY PARK MASTERPLAN

- Amenity Legend**

 - 1 Existing Athletic Field Complex
 - 2 Existing Disc Golf Course
 - 3 Existing Mountain Bike Trails
 - 4 Existing Fort Woof Dog Park
 - 5 Parking Lot
 - 6 Food Truck Parking
 - 7 Vehicular Enhancement
 - 8 Large Trailer Parking
 - 9 Gateway Park Entry Drive Monument
 - 10 Outdoor Equestrian Center
 - 11 Park Facility
 - 12 Restrooms/Concession Building
 - 13 Outdoor Event Space
 - 14 Great Lawn
 - 15 Outdoor Market Space
 - 16 Paved Path
 - 17 Unpaved Path
 - 18 Mountain Bike Trail Expansion
 - 19 Boardwalk/Bridge Crossing
 - 20 Scenic Overlook
 - 21 Outdoor Classroom and Low Ropes Course
 - 22 Fort Woof Dog Park Expansion
 - 23 Athletic Field Expansion
 - 24 Basketball Courts
 - 25 Tennis and Pickleball Courts
 - 26 Sand Volleyball Courts
 - 27 Destination Playground
 - 28 Splashpad
 - 29 Disc Golf Expansion
 - 30 Mountain Biking Hub
 - 31 Bike Skills Course and Skatepark
 - 32 Stairway to Overlook
 - 33 Hill Slide
 - 34 Paddle Sports Boat Launch
 - 35 Playground
 - 36 Trail Connection to Brandies St.
 - 37 Maintenance Road
 - 38 Bioretention Area



Riverside Dr.

Interstate 30

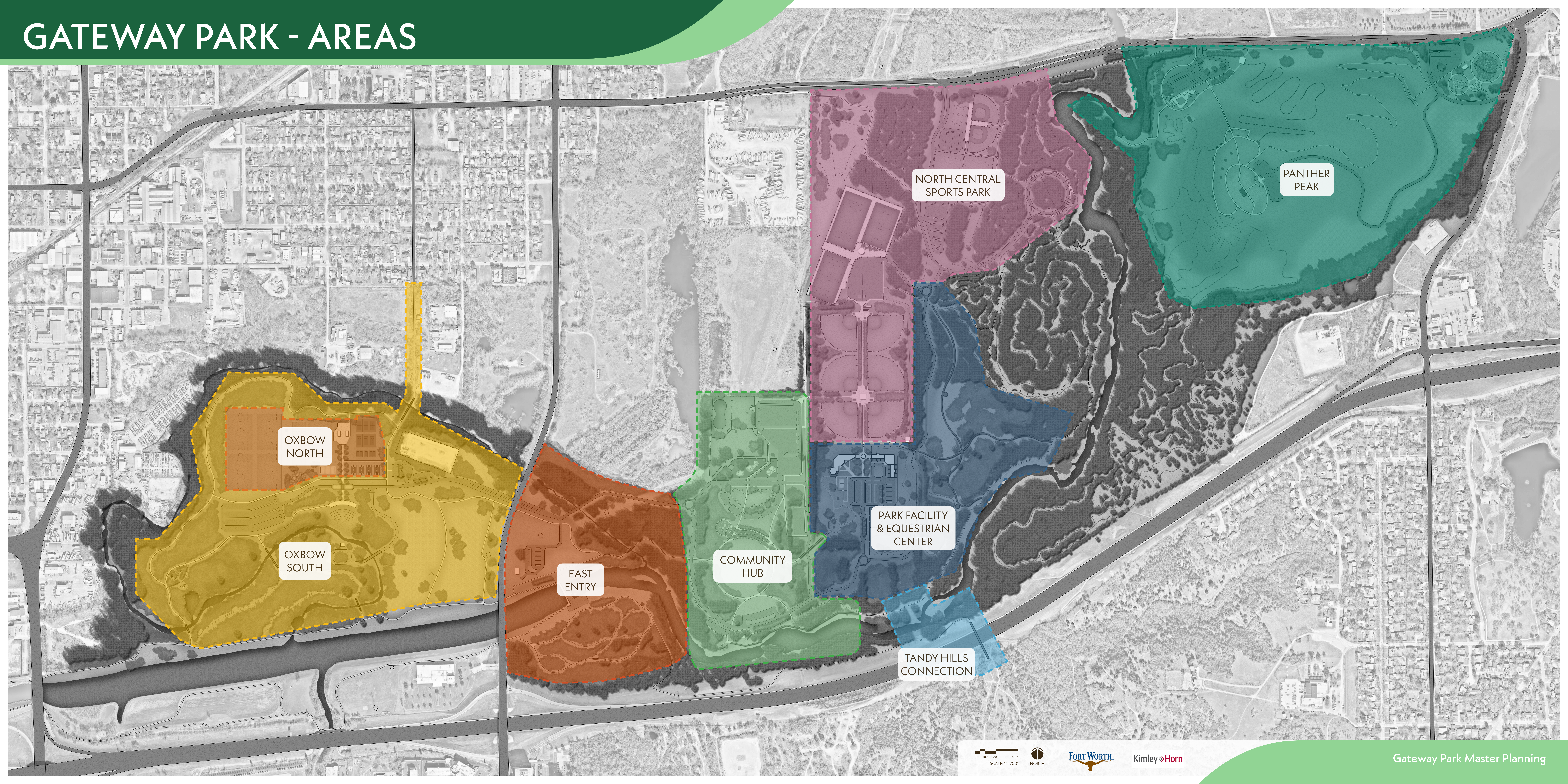
Beach St.

East 1st St.

Oakland Blvd.

Interstate 30

GATEWAY PARK - AREAS



OXBOW
NORTH

OXBOW
SOUTH

EAST
ENTRY

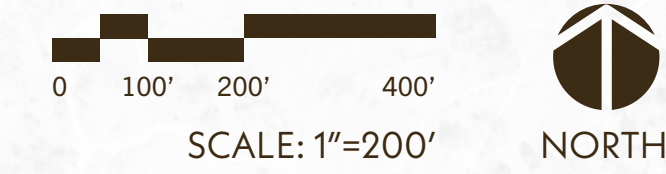
COMMUNITY
HUB

NORTH CENTRAL
SPORTS PARK

PARK FACILITY
& EQUESTRIAN
CENTER

TANDY HILLS
CONNECTION

PANTHER
PEAK



Kimley»Horn