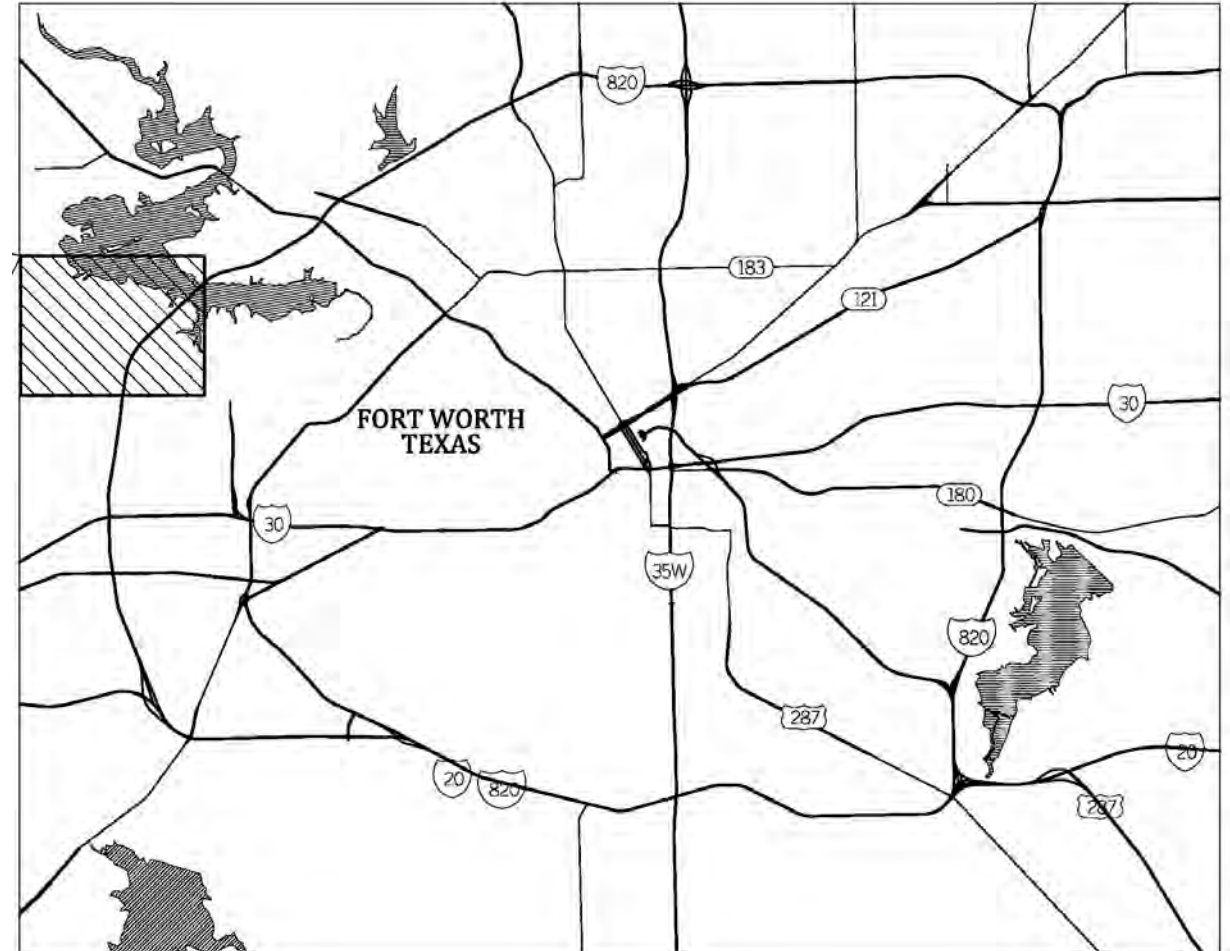


# Silver Creek Road

Mitch Aiton, P.E.  
City of Fort Worth - TPW

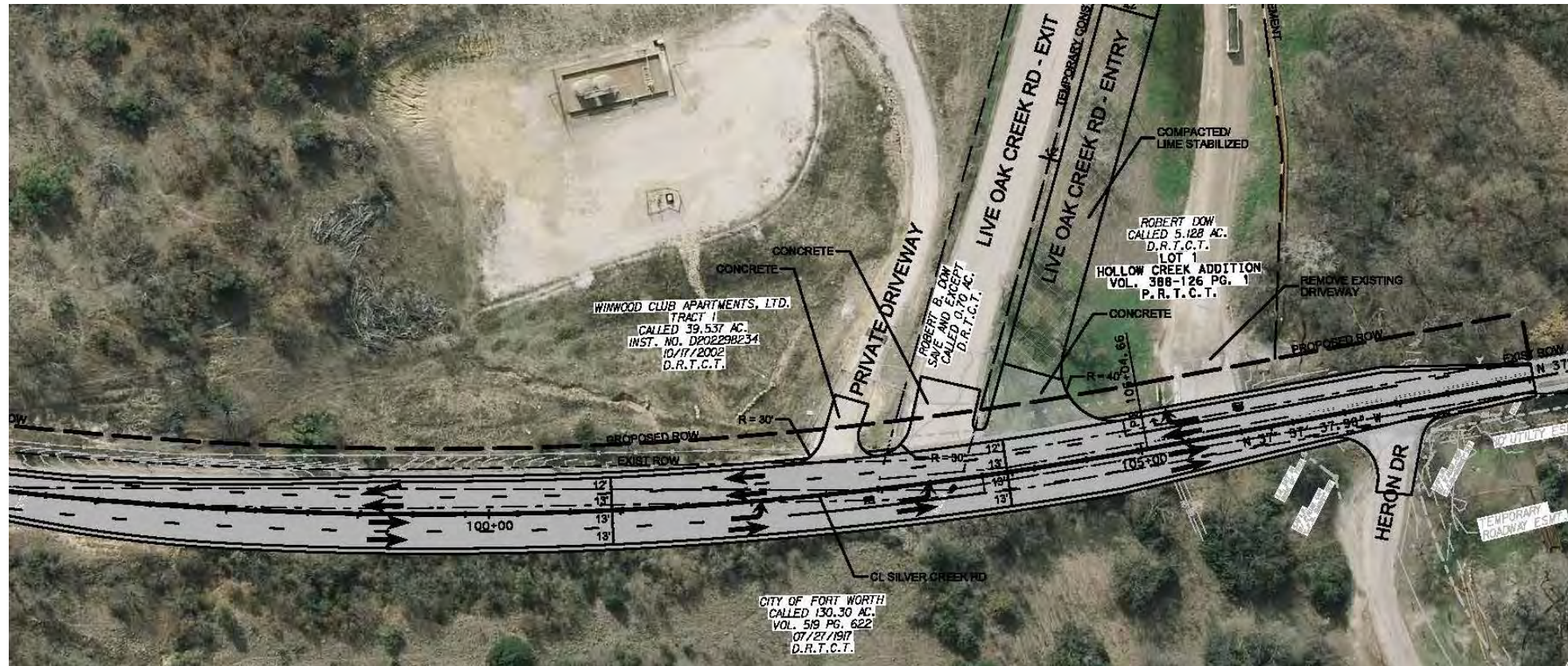


# Project Improvements

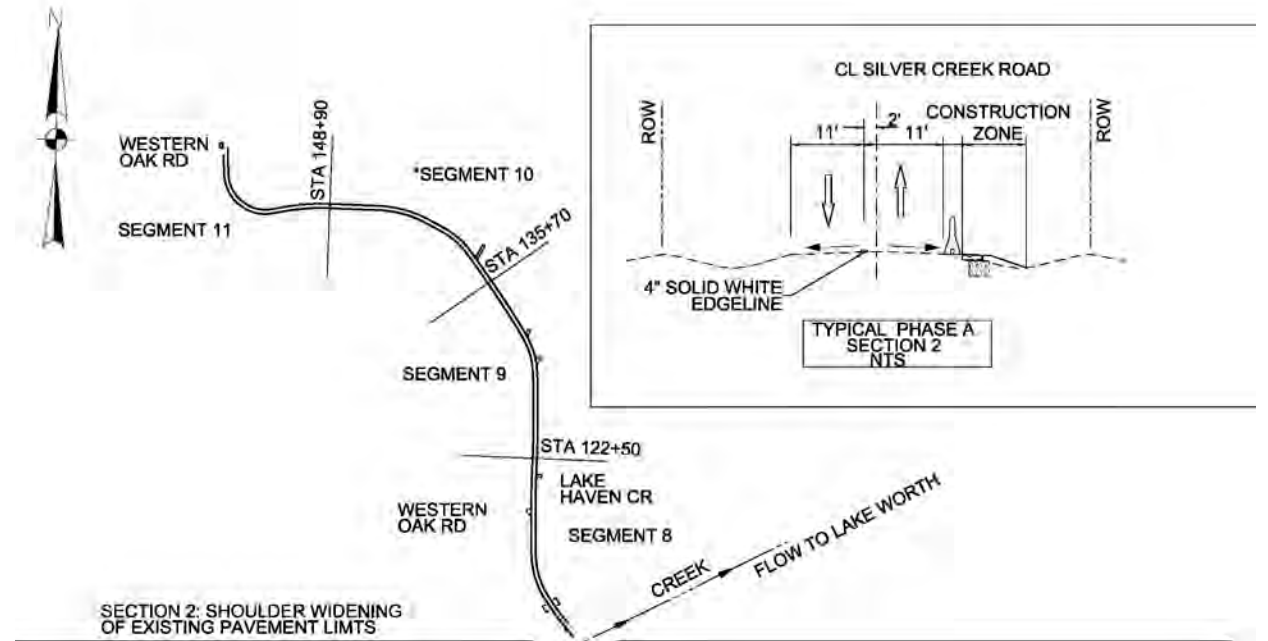
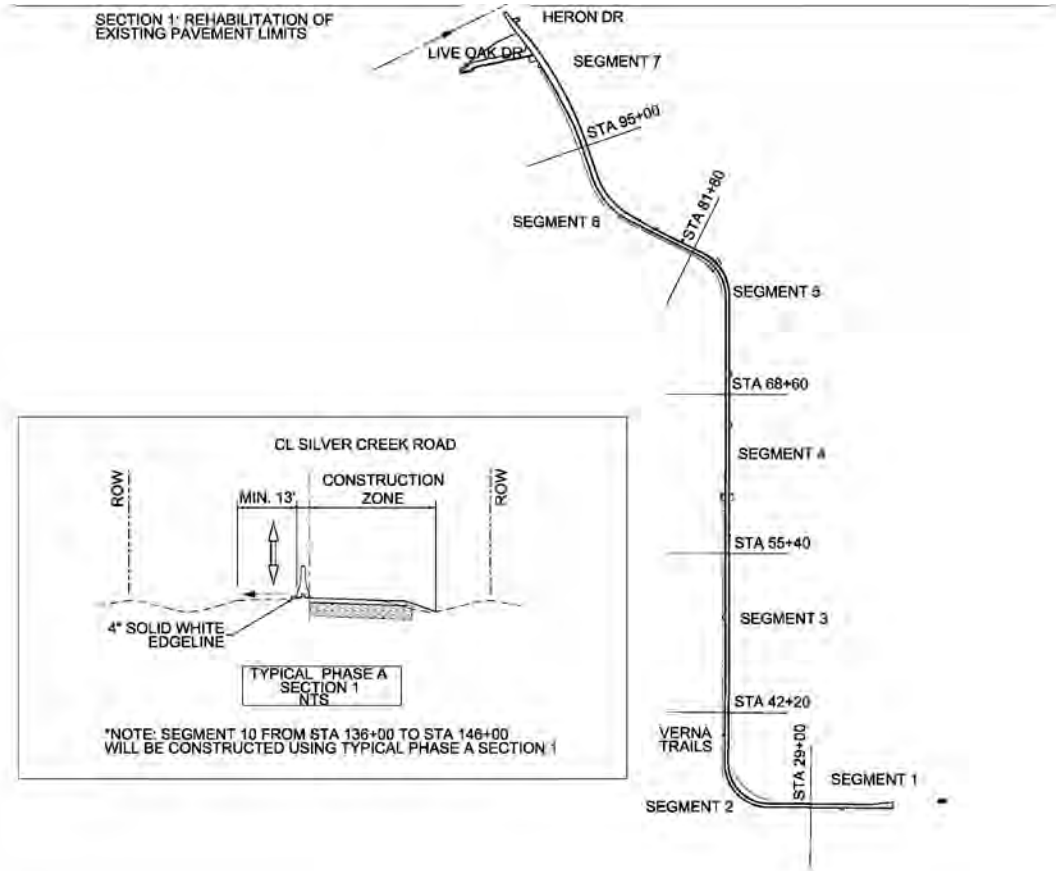
- Rebuild Subgrade, New Asphalt Driving Surface
- Improved Drainage – Cross Culverts and Ditches
  - Will Improve Future Road Performance
- Add 4' Shoulder to Existing 13' Lane
- Flatter turns where available
- Turn Lanes at Silver Creek Materials



# Silver Creek Materials



# Construction Phasing





# Remaining Project Schedule

- Plans are in Final Review
- Right of Way Acquisition is in Final Stages
- Franchise Utility Relocation
  - 2 Oncor Poles to Relocate Advertise For Construction
- Begin Construction

# Restriping Near 820



# Thank You

