

Camp Bowie Area – Neville to Clover- Water and Sewer Improvements in-person community construction meeting

Thursday, May 14, 2026, 6 p.m.

Fort Worth Fire Department Local 440, 3855 Tulsa Way

Agenda

- Introductions
- Project Overview
- Project Area
- Frequently Asked Questions
- Timeline



Camp Bowie Area – Neville to Clover– Water and Sewer Improvements

Your project team includes:

Project Manager: Dena Johnson, Fort Worth Water

- 817-991-8820
- Dena.Johnson@FortWorthTexas.gov

Inspector: Richard W. Walden, TPW

- 682-249-3078
- Richard.Walden@FortWorthTexas.gov

Camp Bowie Area – Neville to Clover– Water and Sewer Improvements

Your project team includes:

Contractor: GraTex

- John Crowley

Engineering Design Consultant:

- Ryley Paroulek/Westwood

Why are you doing these projects?

Fort Worth prioritizes water and sewer line replacements based on available data which includes the water main break history, leak history, CCTV (closed circuit TV) inspection, age of the line, and the line material.

In this instance, the project was created because of the cast iron pipe initiative the City of Fort Worth is implementing to remove and replace old deteriorated cast iron water mains in the system.



What are the boundaries?

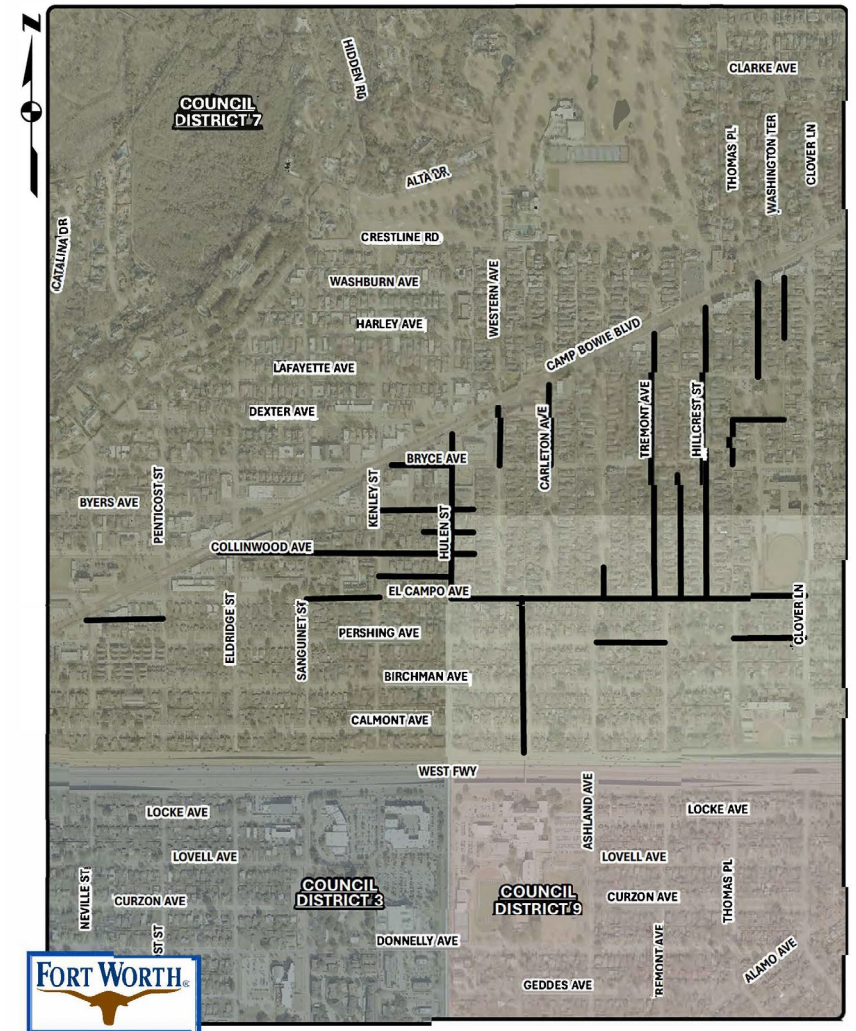
Existing water and sanitary sewer lines will be replaced and storm drain lines will be installed in an area bound by:

- Camp Bowie Boulevard to the north
- Interstate 30/West Freeway to the south
- Clover Lane to the east
- And Camp Bowie Boulevard at Neville Street to the west.

This project is in Fort Worth Council District 7.

Construction will impact the West Side Alliance and the Arlington Heights neighborhood association

Camp Bowie Area -Neville to Clover - Water & Sewer Improvements - construction map



Cast iron water lines and deteriorated sanitary sewer lines will be replaced in the following ...

Collinwood Avenue

- From Eldridge Street then, east 175 feet of Hulen Street

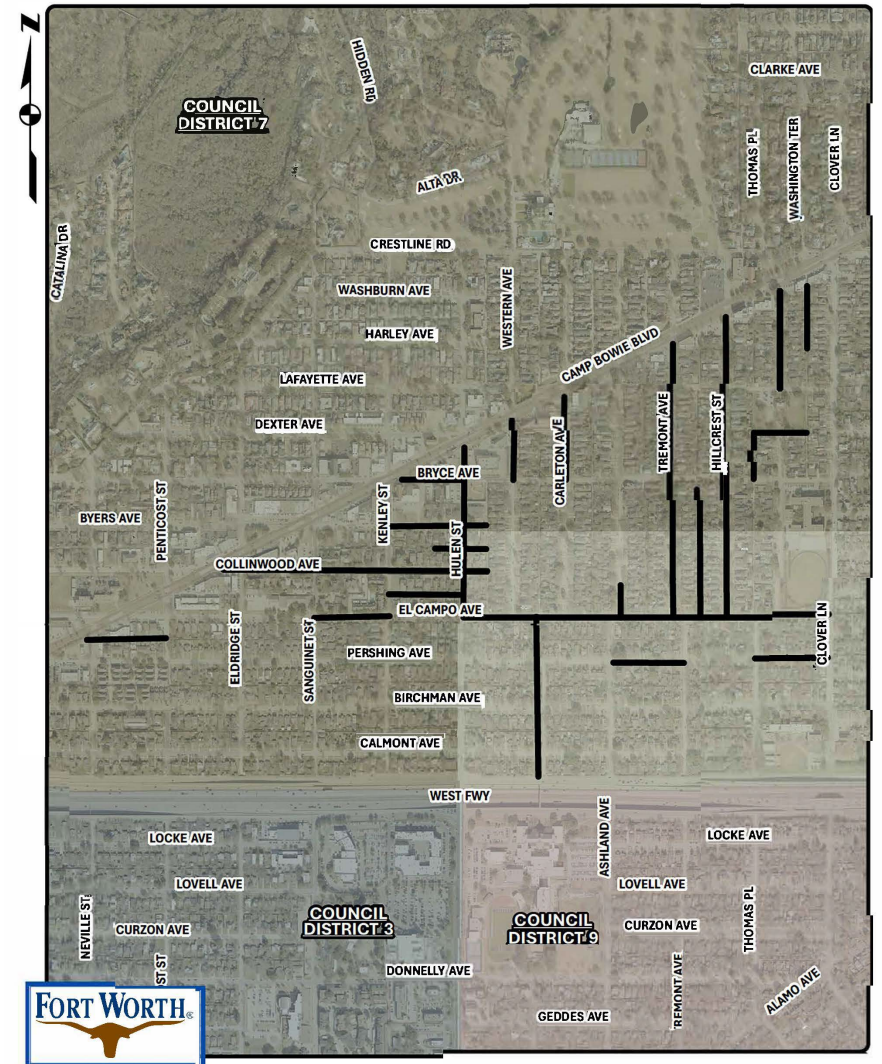
Hulen Street

- From El Campo Avenue to Camp Bowie Boulevard

Bryce Avenue

- From Kenley Street to Hulen Street

Camp Bowie Area -Neville to Clover - Water & Sewer Improvements - construction map



Cast iron water lines only will be replaced in the following ...

Western Avenue

- From Bryce Avenue to Camp Bowie Boulevard (*cast iron water main*)

Western Avenue

- From the I-30 frontage road to El Campo Avenue (*cast iron water main*)

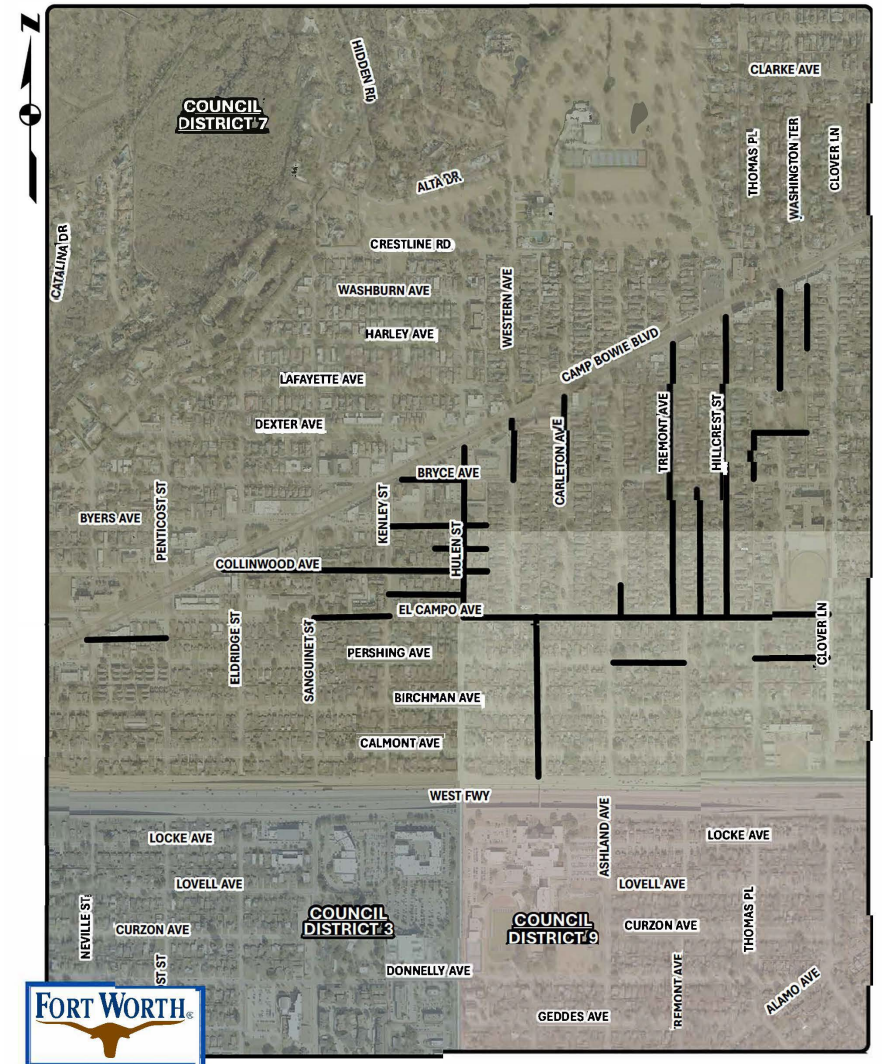
Pershing Avenue

- From Ashland Avenue to Tremont Avenue (*cast iron water main*)

Pershing Avenue

- From Thomas Place to Clover Lane

Camp Bowie Area -Neville to Clover - Water & Sewer Improvements - construction map



Cast iron water lines only will be replaced in the following ...

Byers Avenue

- From Kenley Street and east 175 feet of Hulen Street

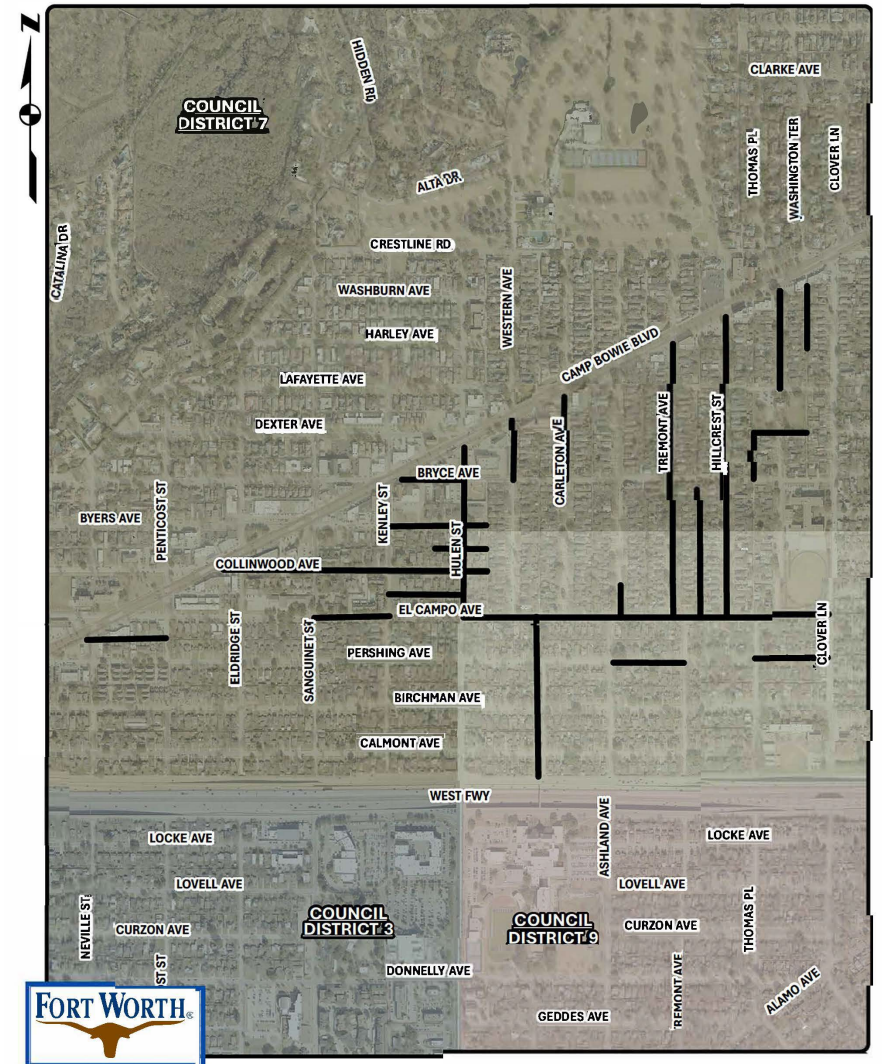
Hillcrest Street

- From El Campo Avenue to Camp Bowie Boulevard

Thomas Place

- From Camp Bowie Boulevard to Lafayette Avenue

Camp Bowie Area -Neville to Clover - Water & Sewer Improvements - construction map



Sanitary sewer lines only will be replaced in the following ...

Alley between El Campo Avenue and Collinwood Avenue

- From Kenley Street to Hulen Street

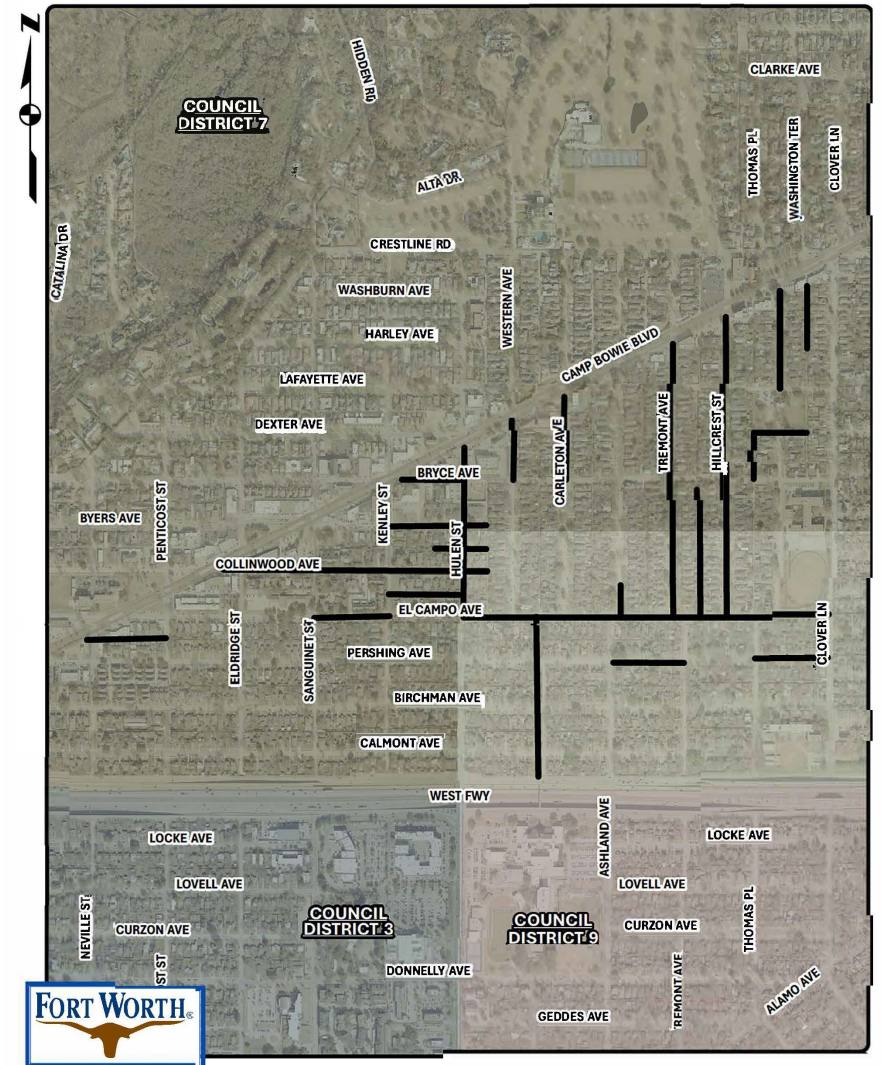
Alley between Collinwood Avenue and Byers Avenue

- From 175 feet north and 190 feet west of the Collinwood Avenue/Hulen Street intersection, then east 385 feet

Carlton Avenue

- From Bryce Avenue , then north 300 feet

Camp Bowie Area -Neville to Clover - Water & Sewer Improvements - construction map



Sanitary sewer lines only will be replaced in the following ...

Easement between Hillcrest Street and Thomas Place

- From Bryce Avenue, then north 300 feet

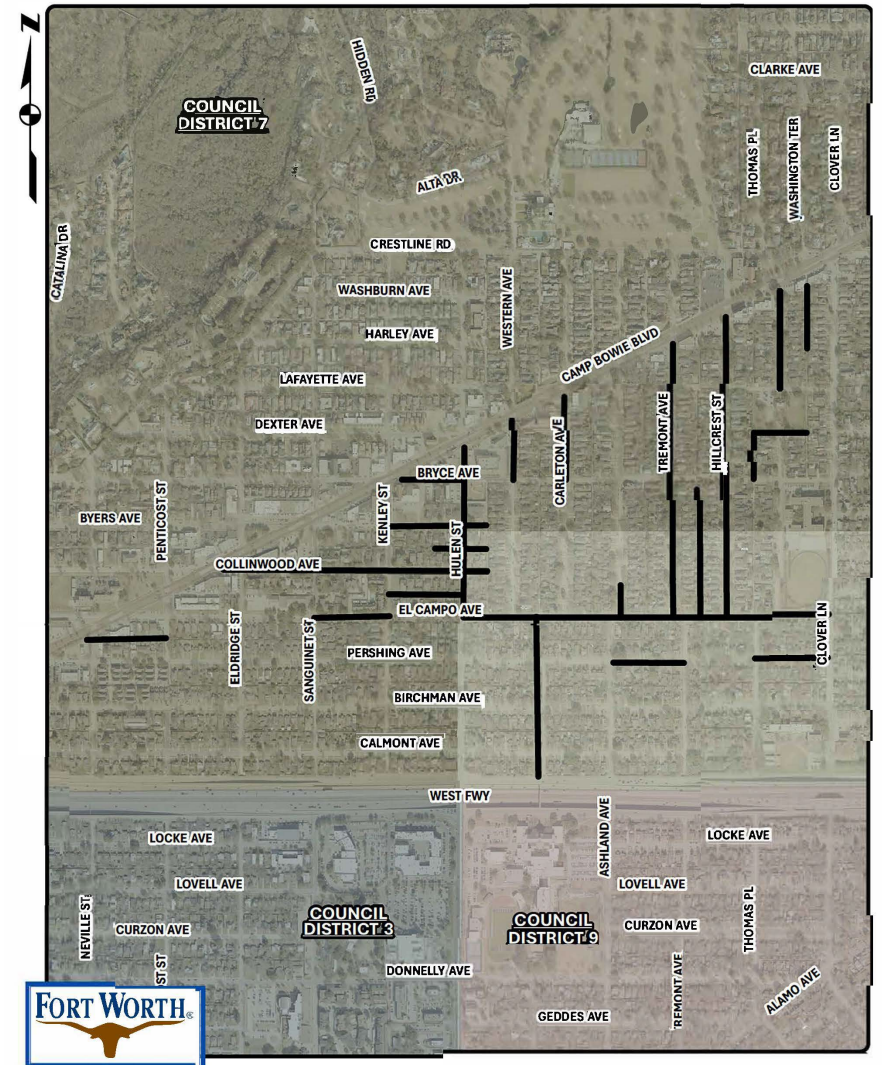
Easement between Hillcrest Street and Tremont Avenue

- From Bryce Avenue to El Campo Avenue

Easement between Bryce Avenue and Lafayette Avenue

- From 200 feet west and 300 feet north of the Bryce Avenue/Thomas Place intersection, then to the east 430 feet

Camp Bowie Area -Neville to Clover - Water & Sewer Improvements - construction map



Sanitary sewer lines only will be replaced in the following ...

Alley between Pershing Avenue and El Campo Avenue

- From Neville Street to Penticost Street

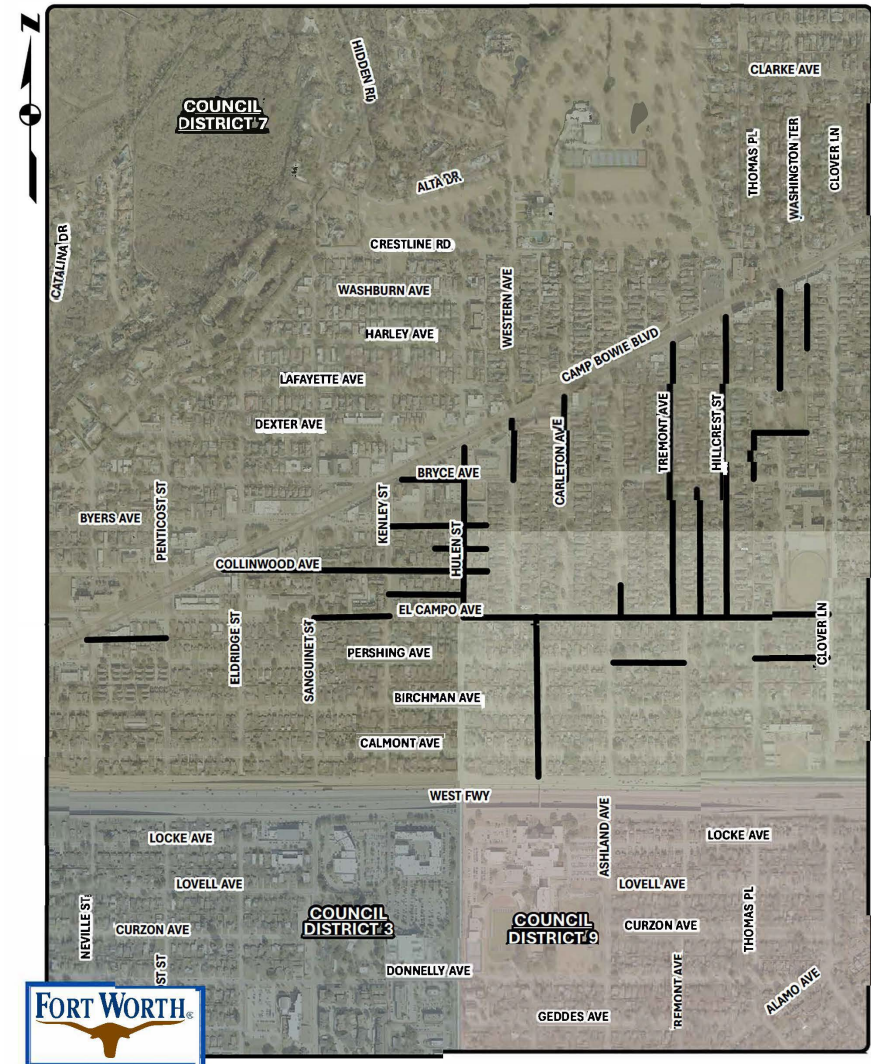
Easement north of Pershing Avenue

- From Camp Bowie Boulevard to Penticost Street

El Campo Avenue

- From Sanguinet Street to Kenley Street

Camp Bowie Area -Neville to Clover - Water & Sewer Improvements - construction map



Sanitary sewer lines only will be replaced in the following ...

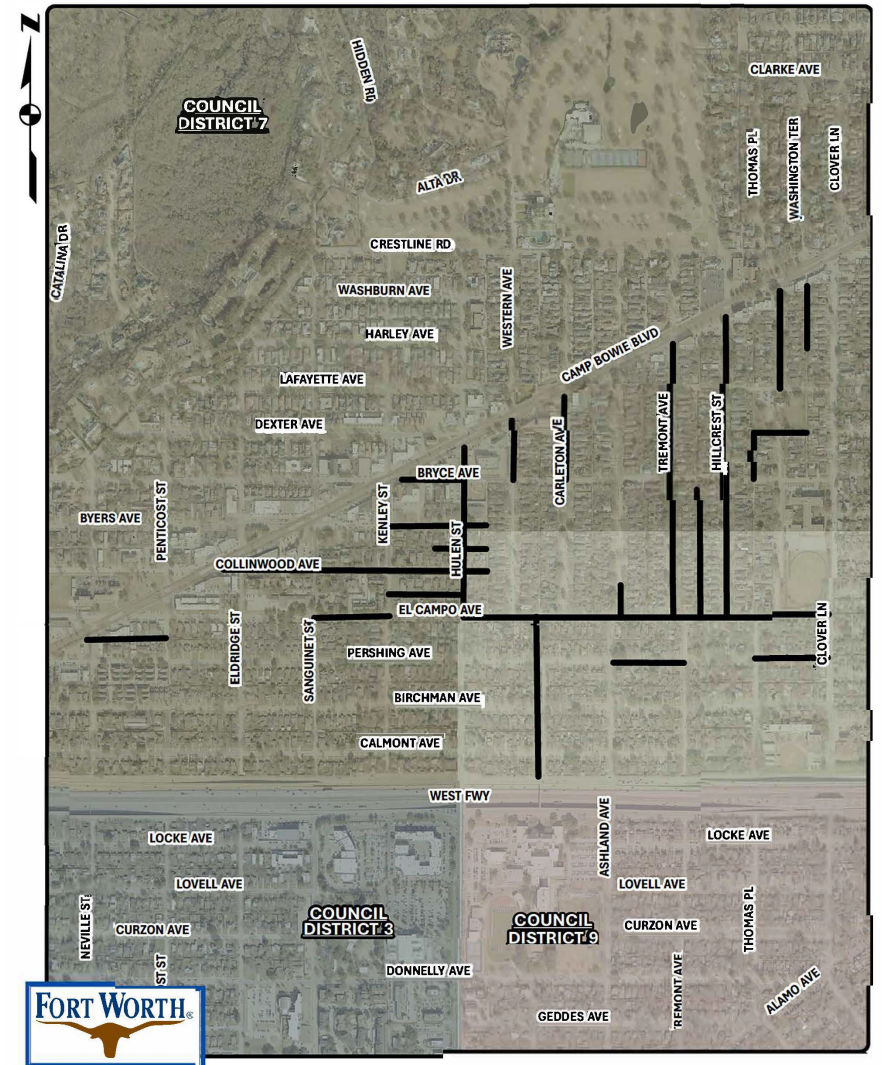
The easement south of Camp Bowie Boulevard

- From Thomas Place to Tremont Avenue

Easement between Thomas Place and Clover Lane

- From Camp Bowie Boulevard, then to the south 555 feet

Camp Bowie Area -Neville to Clover - Water & Sewer Improvements - construction map

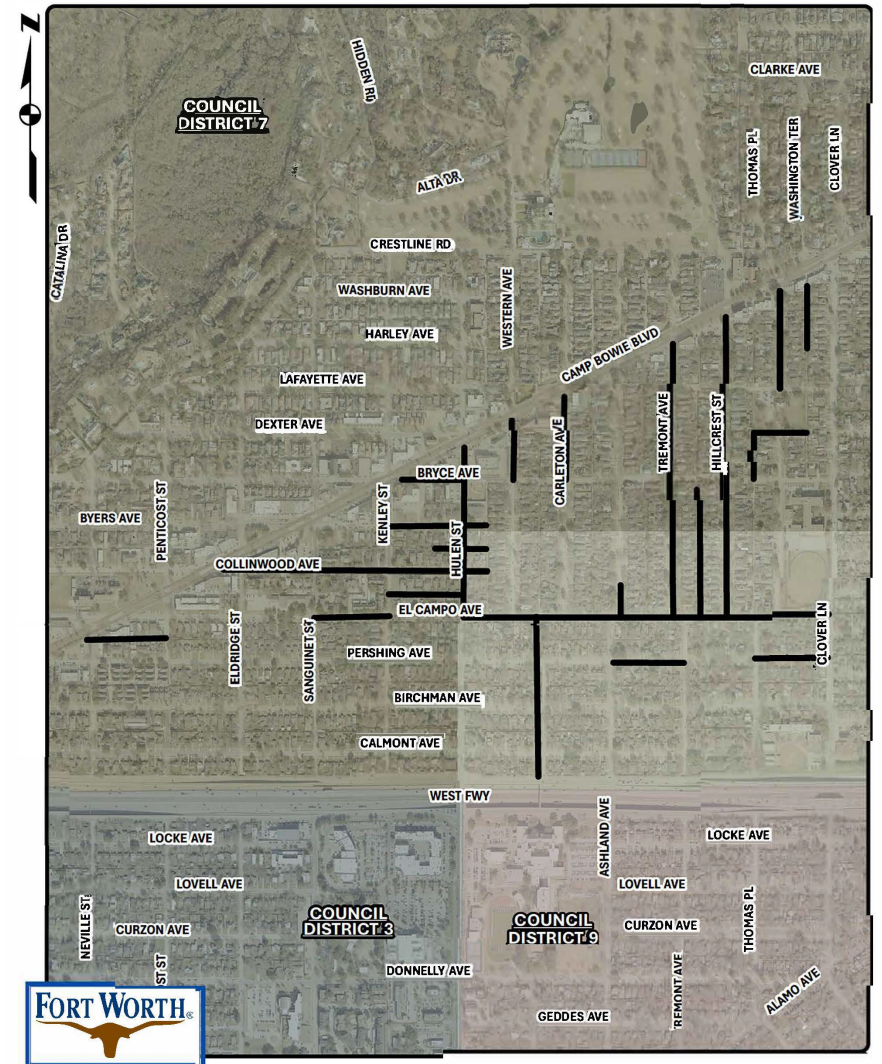


Cast iron water, sanitary sewer and storm drain lines will be replaced in

Tremont Avenue

- From El Campo Avenue to Camp Bowie Boulevard

Camp Bowie Area -Neville to Clover - Water & Sewer Improvements - construction map

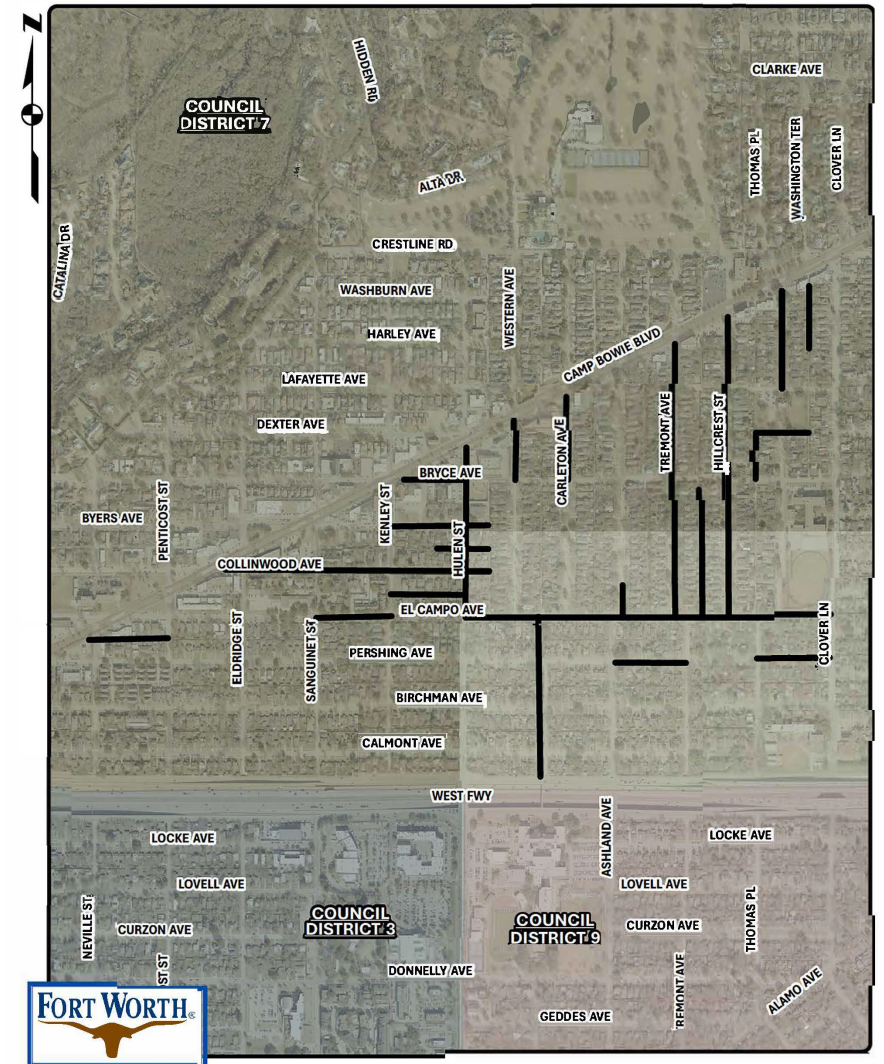


Cast iron water and storm drain lines will be replaced in ...

El Campo Avenue

- Hulen Street to Clover Lane
- Ashland Avenue from El Campo Avenue to the north 100 feet

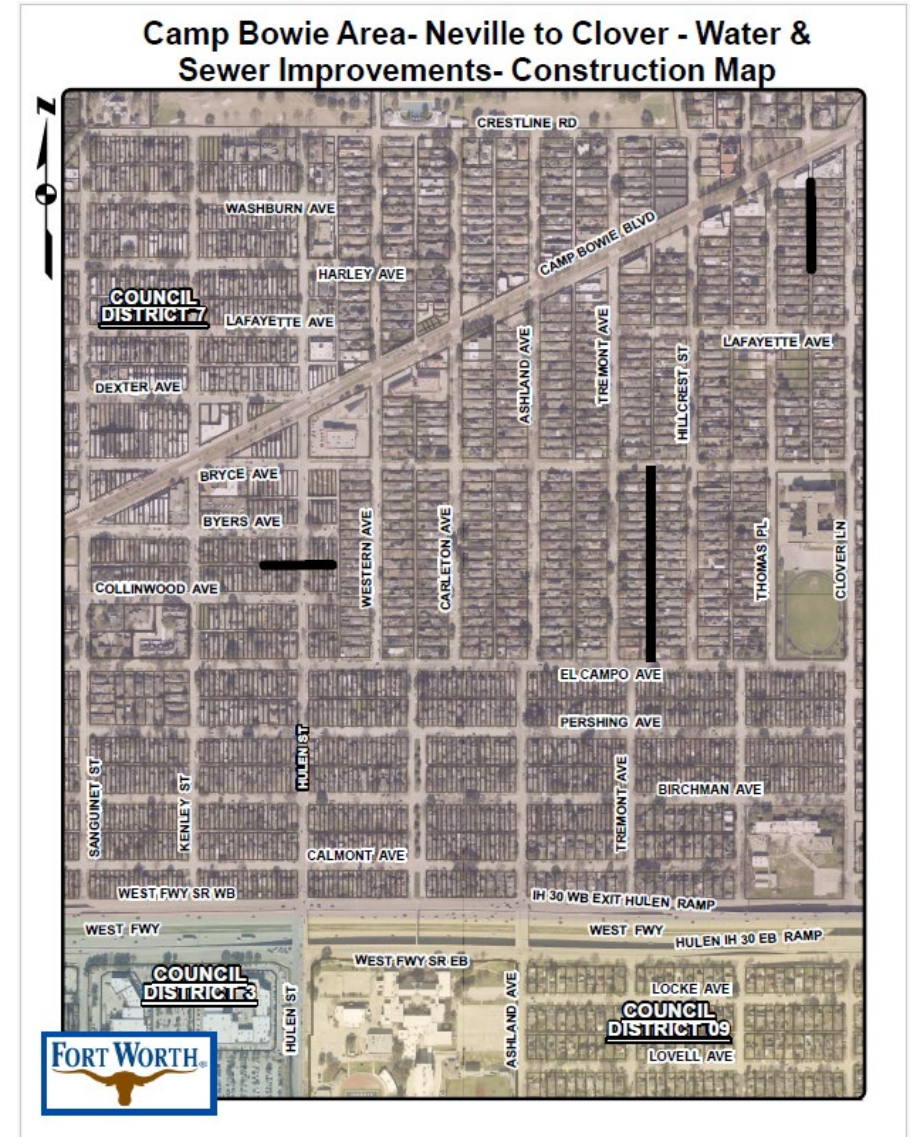
Camp Bowie Area -Neville to Clover - Water & Sewer Improvements - construction map



Construction will start

5/22/26 in the following order:

- Sanitary sewer in the alley between Collinwood Avenue and Byers Avenue
- Sanitary sewer in the alley between Hillcrest Street and Tremont Avenue
- Sanitary sewer in the easement between Thomas Place and Clover Lane



Frequently Asked Questions

How will we know construction is starting?

Customers need to keep an eye on your front door for a door hanger from the City of Fort Worth.

You will receive two door hangers.

The first one says “Construction Starts in 7 Days.”

WATER UTILITY IMPROVEMENTS

Construction Starts in 7 Days

WATER AND/OR WASTEWATER improvements are coming to your neighborhood. Crews are scheduled to begin work within the next SEVEN days, weather permitting.

Residents will have access to homes at all times. Water service will only be interrupted for short periods of time and advance notice will be provided as to when this will occur. There is never an interruption to wastewater service.

Residents are asked to keep all vehicles off both sides of the street during the week from 7 a.m. to 6 p.m. Travel and driveway access will be limited at times during construction.

For questions, please call 817-392-8306.

MEJORAMIENTO EN LA UTILIDAD DE AGUAS

Construcción Comienza en 7 días

Mejoramiento a agua y aguas residuales llegan a su vecindario. Los equipos están programados para comenzar a trabajar dentro de los próximos SIETE días, si el tiempo lo permite.

Los residentes tendrán acceso a sus hogares en todo momento. El servicio de agua sólo será interrumpido por períodos cortos del tiempo y el previo aviso será proporcionado en cuanto a cuando esto ocurra. Nunca hay una interrupción de servicio de alcantarillado y saneamiento.

Se pide a los residentes que retiren todos los vehículos desde a ambos lados de la calle durante la semana de 7 a.m. a 6 p.m. Los viajes y el acceso a la cochera estarán limitados a veces durante la construcción.

Para preguntas, por favor llame al 817-392-8306.

How will we know construction is starting?

The second door hanger says, "Construction Starts Tomorrow."

Businesses will be alerted 48 hours before construction starts.

The inspector will include his/her business card and contact information on the door hanger.

WATER UTILITY IMPROVEMENTS

Construction Starts TOMORROW

WATER AND/OR WASTEWATER improvements are coming to your neighborhood. Crews are scheduled to begin work **TOMORROW**, weather permitting.

Residents will have access to homes. Water service will only be interrupted for short periods of time and advance notice will be provided as to when this will occur.

Residents are asked to keep all vehicles off both sides of the street during the week from 7 a.m. to 6 p.m. Travel and driveway access will be limited at times during construction.

For questions, please call 817-392-8306.

MEJORAMIENTO EN LA UTILIDAD DE AGUAS

La construcción empieza MAÑANA

Mejoramiento a agua y aguas residuales llegan a su vecindario. Los equipos están programados para comenzar a trabajar **MAÑANA**, si el tiempo lo permite.

Los residentes tendrán acceso a sus hogares en todo momento. El servicio de agua sólo será interrumpido por períodos cortos del tiempo y el previo aviso será proporcionado en cuanto a cuando esto ocurra. Nunca hay una interrupción de servicio de alcantarillado y saneamiento.

Se pide a los residentes que retiren todos los vehículos desde a ambos lados de la calle durante la semana de 7 a.m. a 6 p.m. Los viajes y el acceso a la cochera estarán limitados a veces durante la construcción.

Para preguntas, por favor llame al 817-392-8306.

Will our water be turned off during construction?

Water will be turned off for 15–30 minutes when service is transferred from the existing line to a temporary water line, and when the service is transferred from the temporary to the new line. These switchovers are done during the day.

The contractor will knock on the door and let customers know when the water will be turned off. The transfer typically takes 30 minutes per house or business.



How does the temporary line impact my home & water bill?

The temporary water line ensures that you are not without water during construction. In the summer months the continuous flow keeps the water from becoming stagnant in the above-ground line.

During the winter months, water must be continually flowing through the temporary line to keep the line from freezing. Customers should also keep their faucets dripping.

The bill for your water usage while you are on the temporary line is based on an average of the previous months' usage.





Will I have access to my driveway during construction?

The inspector and the contractor will work with residents who need driveway access during active construction hours.

Will the City's trash truck be able to pick up my trash and recycling during construction?

If your side of the street is closed on your scheduled trash collection day, the contractor will take your trash and recycling carts to the opposite side of the street so the trash collection vehicle can pick it up.



Do you replace the water service line up to my house?

We replace the City-owned service line to the property line. We also replace the water meter and meter box and will repair impacted areas on your property. We do not replace the water line from the water meter to your home or business.

The service line from the water meter to your home or business is considered private plumbing and, in the event of a leak, repairs need to be done by a licensed plumber at the homeowners' expense.

Will our sewer service be disrupted?

Sanitary sewer service will not be interrupted. New sewer cleanouts will be installed at the property line. The sewer cleanout provides crews easy access if a backup or blockage occurs.



Will you need access to our property?

Construction will be in the streets and easements. If Fort Worth Water needs access to your property you will be contacted. If an easement is needed for your property a city land agent will contact you soon.

What are the construction hours?

The hours of construction are:

- 7 a.m. to 6 p.m., Monday through Friday . . .
- And, if requested by the contractor and approved by the City, 9 a.m. to 4 p.m., or 5 p.m. – on Saturdays.



Will there be lane closures during construction?

Yes. Signs will be posted to alert motorists.



If you see water running down the street, don't turn it off.

Before we can connect your services to the new water line we have to flush the line.

The water flow – from flushing the line – will be continuous until the inspector gets the samples for that day. You will be connected to the new water main after two consecutive samples pass the bacteriological test.

When it is time to sample the water flowing through the new water main, the contractor will place traffic cones around the valve to prevent anyone from parking over the valve. Don't move the cones, don't park over the cones and don't turn off the water valve.



How do I report an emergency or non-emergency?

Emergencies

Water main breaks, sewer backups - 24 hours a day
817-392-4477, Select Option 1

Water Call Center (non-emergency)

- 7 am to 7 pm Monday through Friday
- 817-392-4477
- Closed City holidays



Download the MyFW app from the App Store or Google Play. You can report sewer overflows, leaks and water main breaks, missing or broken meter lids, water theft, water violations, no water service, water pressure issues and other sewer concerns.

Where can I get more information?

Progress will be updated on the City of Fort Worth website at www.FortWorthTexas.gov. Type 104668 in the search bar on the home page.

Your project page is:

<https://www.fortworthtexas.gov/projects/cfw-camp-bowie-area-neville-to-clover-water-and-sewer-improvements>

Thank you!