

Westcliff, Foster Park and Overton Area Improvements community construction meeting

Thursday, August 21, 2025 7 p.m.

Cowtown Marathon, 3584 South Hills Avenue, Suite 21

Agenda

- Introductions
- Project Overview
- Project Area
- Frequently Asked Questions
- Timeline



Your project team includes:

Project Manager: Preeti KC

- 817-392-5467; Preeti.KC@FortWorthTexas.gov
- Fort Worth Water Department

Inspector: William (Bill) Fauver

- 817-897-3698; William.Fauver@FortWorthTexas.gov
- Transportation and Public Works

Your project team includes:

Contractor: Gra-Tex Utilities

- John Crowley

Engineering Design Consultant: Multatech Engineering Inc.

- Robert Pretus
- Paul Padilla

Project Overview

This part of the project is bound by . . .

- Sunnybank Drive at Western Center to the north
- Overton Ridge Boulevard to the west
- South Drive to the south, and
- Trail Lake Drive to the east.

Cast iron water mains will be replaced in eight streets.

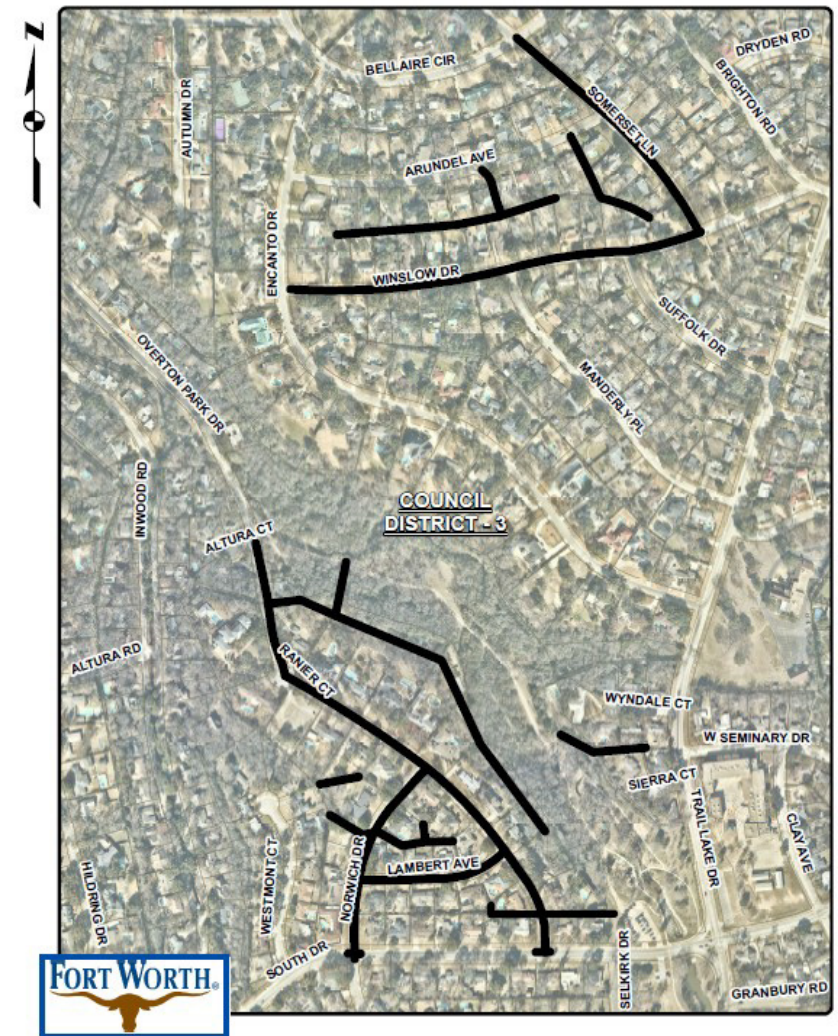
Nine sewer mains – in easements - will also be replaced.

This part of the overall project is in Fort Worth Council District 3.

Why are we doing this project?

Fort Worth prioritizes water and sewer line replacements based on available data which includes:

- Water main break history
- Leak history
- CCTV (closed circuit TV) inspection
- Age of the line
- Line material
- Lead service lines
- Cast iron lines



Project Overview

The focus - for this Fort Worth Water capital improvement construction project – is the replacement of cast iron water mains. That includes:

Somerset Lane

- From Winslow Drive north to Bellaire Circle

Winslow Drive

- From Encanto Drive to Somerset Lane

Ranier Court

- From Altura Court to South Drive

Norwich Drive

- From Ranier Court to South Drive

Project Overview

The focus - for this Fort Worth Water capital improvement construction project – is the replacement of cast iron water mains. That includes:

Lambert Avenue

- From Ranier Court to Norwich Drive

Wyndale Court

- From Trail Lake Drive to the cul-de-sac

Overton Park Drive

- From Altura Court to Ranier Court

Sierra Court

- From Trail Lake Drive to the cul-de-sac

Westcliff West neighborhood association easements

- Easement between Arundel Avenue and Winslow Drive from 220 feet east of Encanto Drive to 910 feet east
- Easement south of Arundel Avenue from Arundel Avenue to 190 feet south
- Easement west of Somerset Lane from Arundel Avenue to 500 feet south
- Easement between Sierra Court and Wyndale Court from 130 feet west of Trail Lake Drive to 360 feet west

Sewer mains will be replaced in each of these segments

Foster Park neighborhood association easements

- Easement east of Ranier Court from 150 feet east of the Lambert Avenue/Ranier Court intersection to 1,510 feet north then 170 feet east
- Easement west of Norwich Drive from 180 feet north of Norwich Drive to 170 feet west
- Easement north of Lambert Avenue from 150 feet west of Ranier Court to 542 feet west

Sewer mains will be replaced in each of these segments

Foster Park neighborhood association easements

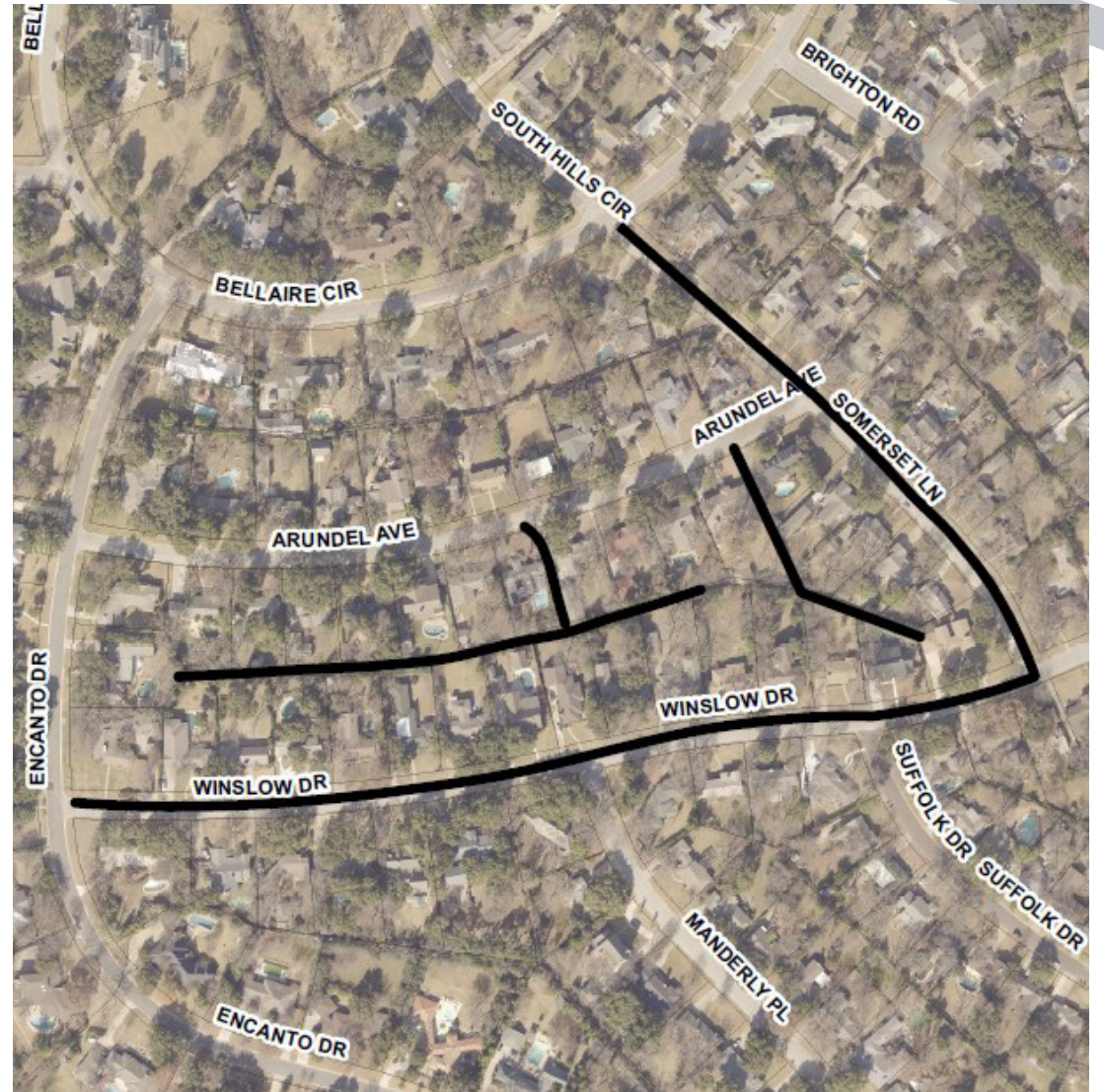
Easement east of Overton Park from 270 feet south of the Overton Park Drive/Altura Court intersection to 150 feet east/155 feet southeasterly

Easement north of South Drive from 150 feet north and 300 feet east of the South Drive/Ranier Court intersection to 500 feet west then 60 feet north

Sewer mains will be replaced in each of these segments

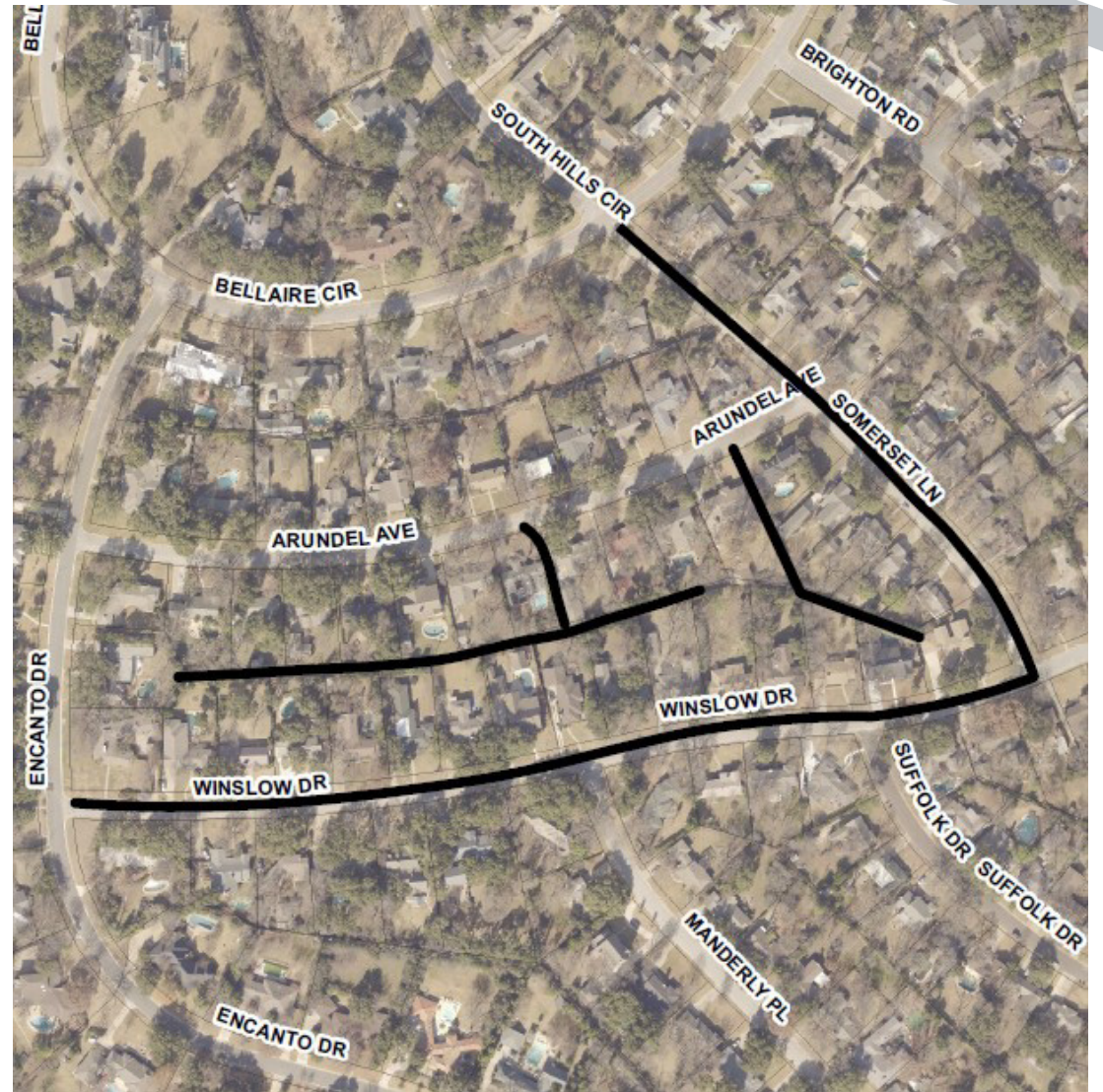
Project Area

- Winslow Drive from Encanto Drive to Somerset Lane (water)
- Somerset Lane from Bellaire Circle to Winslow Drive (water)
- Easement between Arundel Avenue and Winslow Drive from 220 feet east of Encanto Drive to 910 feet east (sewer)



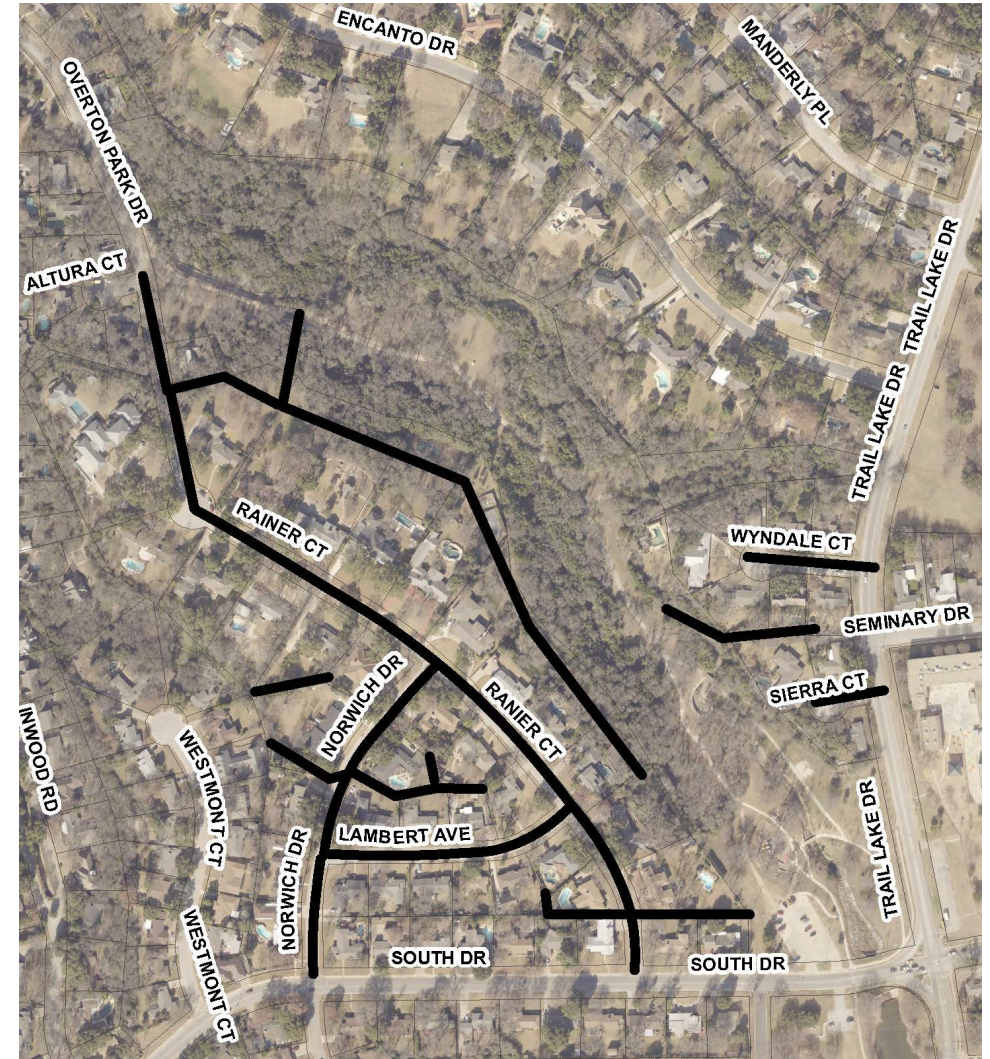
Project Area

- Easement south of Arundel Avenue from Arundel Avenue to 190 feet south (sewer)
- Easement west of Somerset Lane from Arundel Avenue to 500 feet south (sewer)



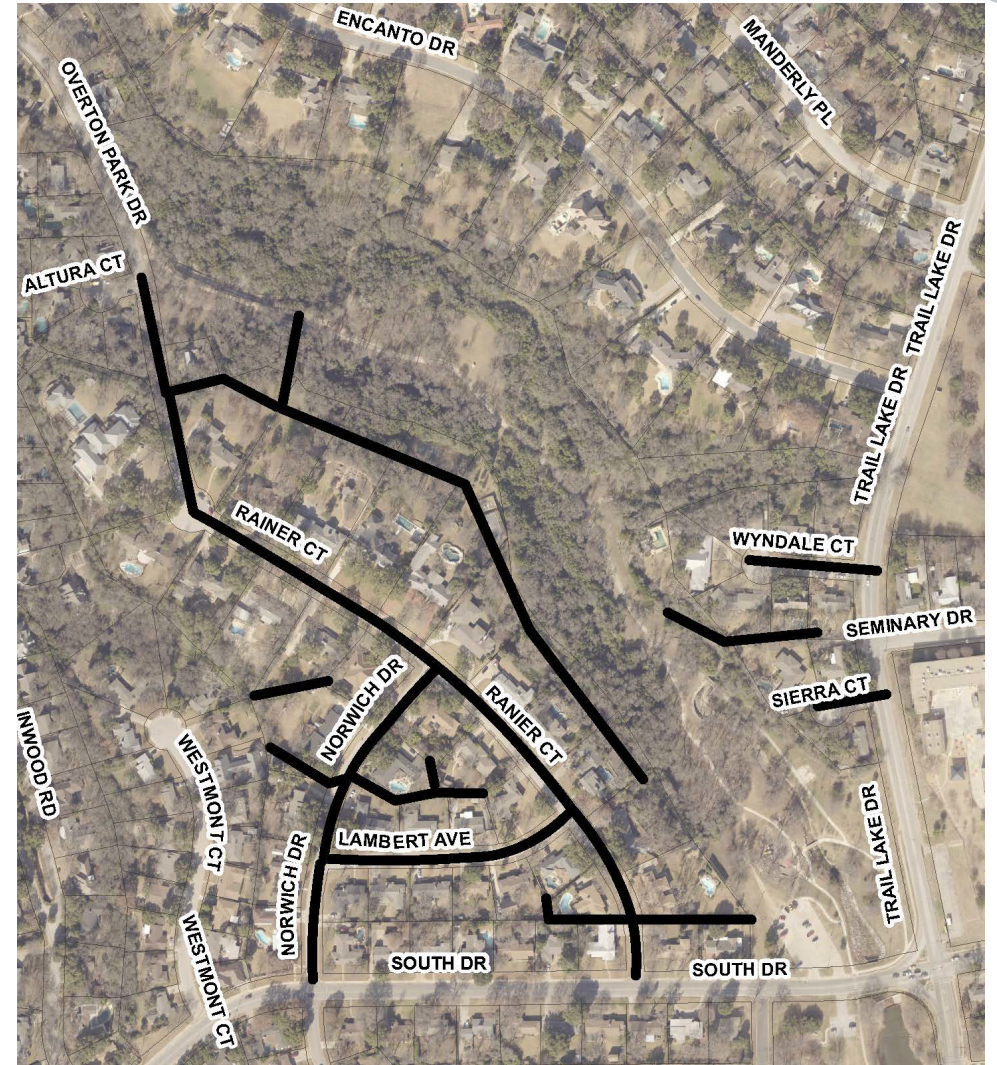
Project Area

- Overton Park Drive from Altura Court to Ranier Court (water)
- Ranier Court from South Dr. to 1,620 feet north (water)



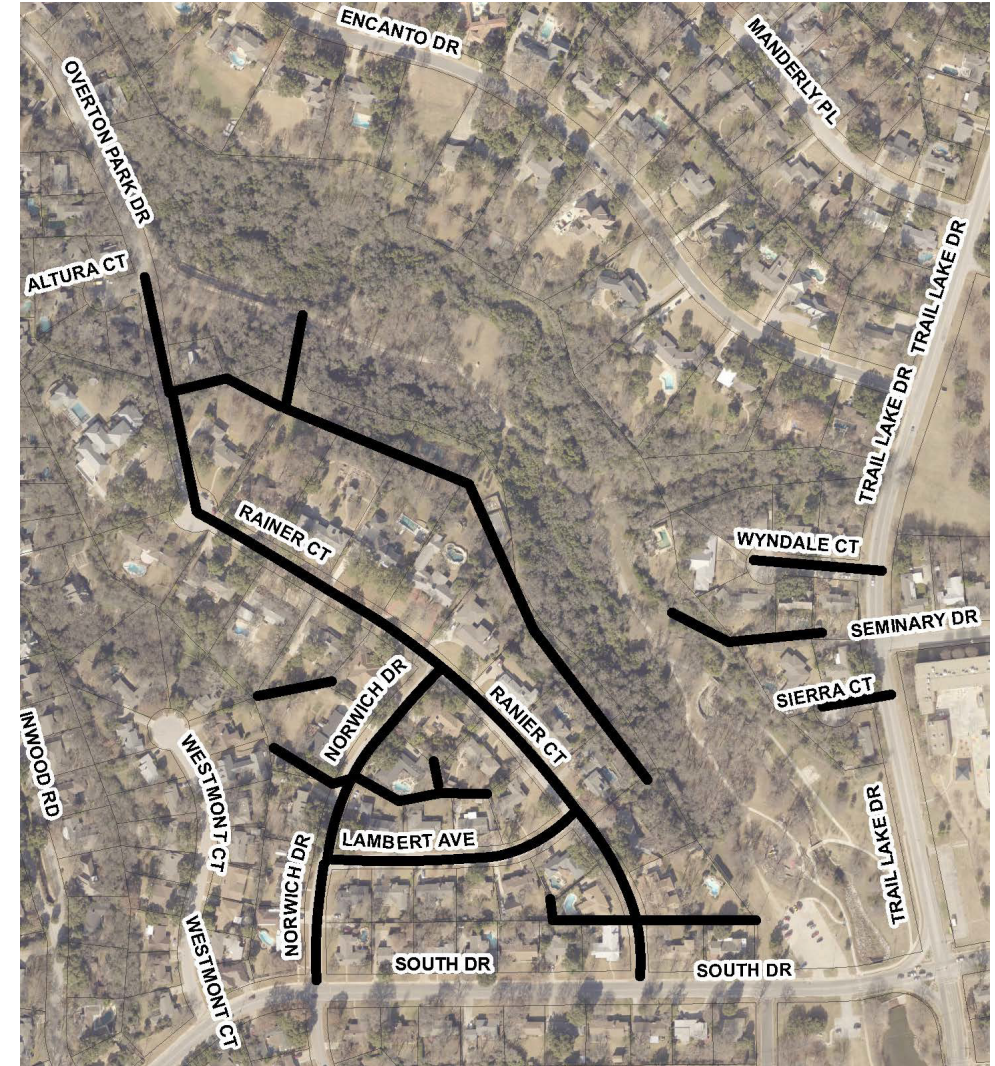
Project Area

- Norwich Drive from Ranier Court to South Drive (water)
- Lambert Avenue from Ranier Court to Norwich Drive (water)



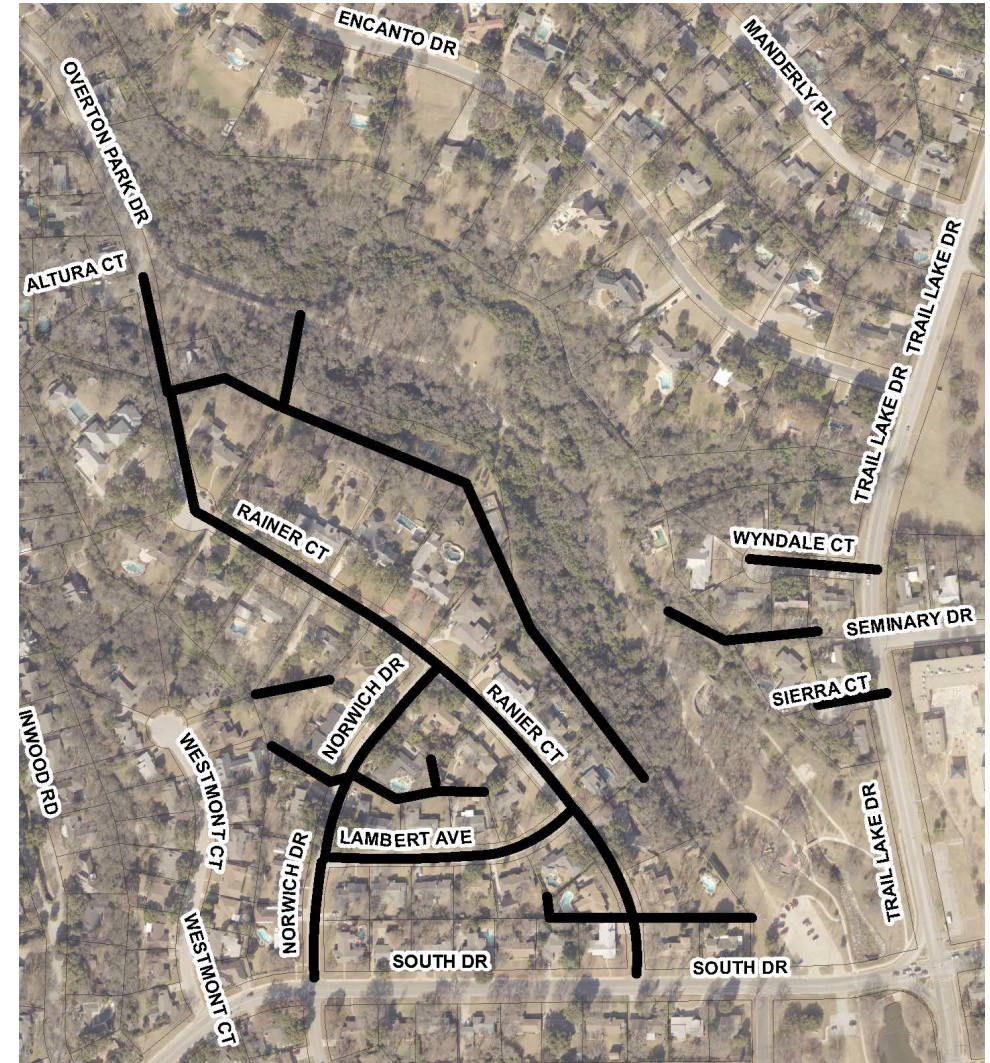
Project Area

- Wyndale Court from Trail Lake Drive to the cul-de-sac (water)
- Sierra Court from Trail Lake Drive to the cul-de-sac (water)
- Easement east of Ranier Court from 150 feet east of the Lambert Avenue/Ranier Court intersection to 1,510 feet north then 170 feet east (sewer)



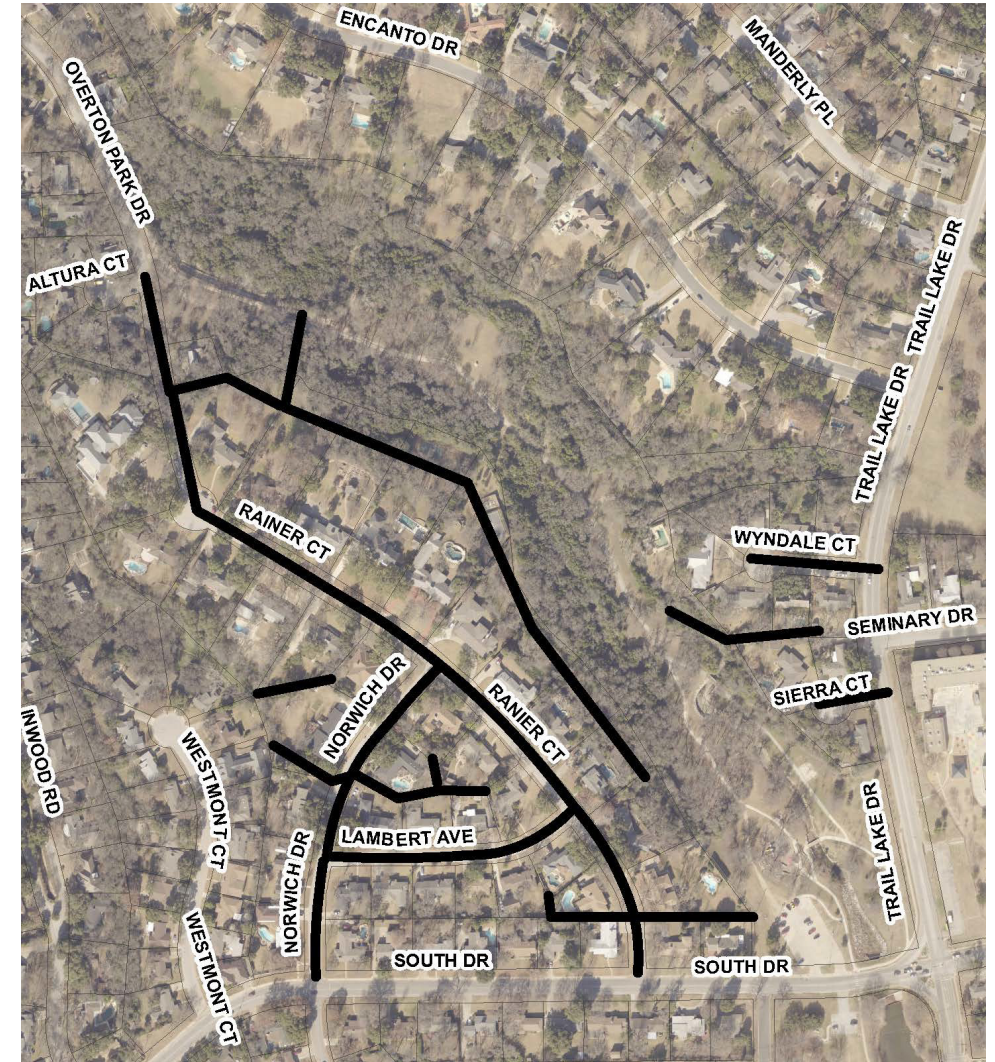
Project Area

- Easement west of Norwich Drive from 180 feet north of Norwich Drive to 170 feet west (sewer)
- Easement north of Lambert Avenue from 150 feet west of Ranier Court to 542 feet west (sewer)
- Easement east of Overton Park from 270 feet south of the Overton Park Drive/Altura Court intersection to 150 feet east/155 feet southeasterly (sewer)



Project Area

- Easement north of South Drive from 150 feet north and 300 feet east of the South Drive/Ranier Court intersection to 500 feet west then 60 feet north (sewer)
- Easement between Sierra Court and Wyndale Court from 130 feet west of Trail Lake Drive to 360 feet west (sewer)



Will our water be turned off?

Water will be turned off for 15-30 minutes when service is transferred from the existing line to a temporary water line, and when the service is transferred from the temporary to the new line. These switchovers are done during the day.

The contractor will knock on the door and let customers know when the water will be turned off. The transfer typically takes 30 minutes per house or business.



Will you need access to our property?

Construction will be in the streets and easements. If Fort Worth Water needs access to your property, we will contact you. If an easement is needed for your property a city land agent should have contacted you.

Will our sewer service be disrupted?

Sanitary sewer service will not be interrupted. New sewer cleanouts will be installed at the property line. The sewer cleanout provides crews easy access if a backup or blockage occurs. The sewer line from the cleanout to the house is the owner's responsibility to maintain.



Will I have access to my driveway?

The inspector and the contractor will work with residents who need driveway access during active construction hours.





Will the city's trash truck be able to pick up my trash and recycling during construction?

If your side of the street is closed on your scheduled trash collection day, the contractor will take your trash and recycling carts to the opposite side of the street so the trash collection vehicle can pick it up.



Will there be lane closures during construction?



Yes.

Signs will be posted to alert motorists.

What are the construction hours?

The hours of construction are 7 am to 6 pm, Monday-Friday and, if requested by the contractor, 9 am to 4 pm or 5 pm on Saturdays.

Timeline

The notice to proceed date is Tuesday, September 2. The contractor will start on:

- Ranier Court from Altura Court to South Drive
- Norwich Drive from Ranier Court to South Drive
- Lambert Avenue from Ranier Court to Norwich Drive



Four segments are already under construction

Council District 3/*Overton Woods neighborhood association*

- Ranch View Road from Bellaire Drive South to 67 feet east (sewer).
- Easement south of SW Loop 820 from Overton Ridge Boulevard to 610 feet west (sewer) - *no neighborhood association*

Council District 4/*Summerfields neighborhood association*

- Western Center Boulevard from Silver Sage Drive to 600 feet west (sewer);
- Poppy Court from Sunnybank Drive to just north of Western Center Boulevard (water and sewer).

Where can I get more information?

- Go to www.FortWorthTexas.gov and type in the project number – 102783- in the search bar on the home page. Westcliff, Foster Park, Overton & Summerfields Area Improvements will pop up.
- To get project page updates, scroll down to the bottom of the project page and click on “Subscribe to this page.”
- The PowerPoint will be linked to this project page.

How do I report an emergency or non-emergency?

Emergencies

Water main breaks, sewer backups - 24 hours a day

817-392-4477, Select Option 1

Water Call Center (non-emergency)

- 7 am to 7 pm Monday through Friday
- 817-392-4477
- Closed City holidays



Download the MyFW app from the App Store or Google Play. You can report sewer overflows, leaks and water main breaks, missing or broken meter lids, water theft, water violations, no water service, water pressure issues and other sewer concerns.

Your project team includes:

Project Manager: Preeti KC

- 817-392-5467; Preeti.KC@FortWorthTexas.gov
- Fort Worth Water Department

Inspector: William (Bill) Fauver

- 817-897-3698; William.Fauver@FortWorthTexas.gov
- Transportation and Public Works

Your project team includes:

Contractor: Gra-Tex Utilities

- John Crowley

Engineering Design Consultant: Multatech Engineering Inc.

- Robert Pretus
- Paul Padilla

Thank you

