



APPENDIX E

20-YEAR PLANNED

SERVICE AREAS

The maps in this appendix depict the Planned Service Areas (PSAs), which are locations in the extraterritorial jurisdiction (ETJ) that the City of Fort Worth expects to be able to serve within the next 20-25 years with appropriate municipal services and infrastructure. The City delineates Planned Service Areas in the ETJ to help guide planning and decision-making on capital improvement projects, future land use allocations, municipal services forecasting, and annexation requests. Inclusion of property in a Planned Service Area does not obligate the City to provide services to the property, nor does it prohibit the City from considering areas outside of PSAs for service provision.

Key factors used to determine Planned Service Areas include proximity to:

- City limits
- Water lines
- Highways, arterial thoroughfares, and railroads

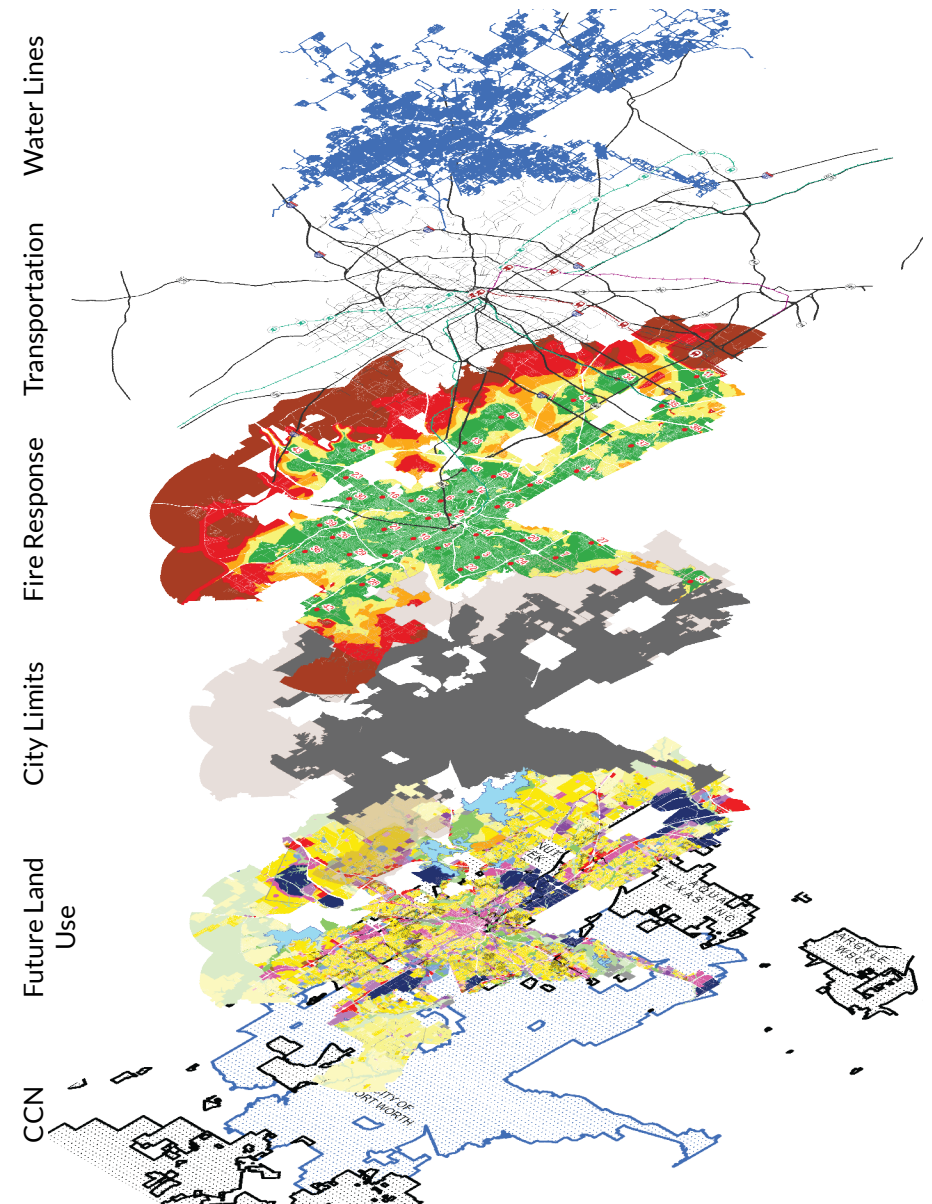
Other factors considered in determining PSAs include the City's future land use plan, the location and extent of buildable land, fire station response times, and Certificates of Convenience and Necessity (CCNs, which define existing water and sewer service areas).



One million gallon elevated water storage tank in Parker County, constructed north of I-20 to serve development in far west Fort Worth.

Source: City of Fort Worth Departments: Development Services, Fire & Emergency Services, IT Solutions, Planning & Data Analytics, Water, and the City Manager's Office, 2022.

SELECTION FACTORS



Fort Worth has 16 Planned Service Areas, as shown on the map to the right. Planned Service Area maps are provided on the following pages in counter-clockwise order, starting with the Far North Area – East.

Planned Service Areas

- [1\) Far North Area - East](#)

- [2\) Far North Area - West](#)

- [3\) Eagle Mountain/ Business 287 Area](#)

- [4\) Boat Club & Bailey Boswell Intersection](#)

- [5\) Ten Mile Bridge & Cromwell Marine Creek Area](#)

- [6\) Jacksboro Highway/Nine Mile Bridge Area](#)

- [7\) Haywire/Silver Creek Area](#)

- [8\) Walsh Ranch North/FM 3325 Area](#)

- [9\) Walsh Ranch South & Veale Ranch Area](#)

- [10\) US 377 & FM 1187 Intersection](#)

- [11\) Oakmont/Chisholm Trail Parkway Area](#)

- [12\) Old Granbury Rd/FWWR/Tarleton North Area](#)

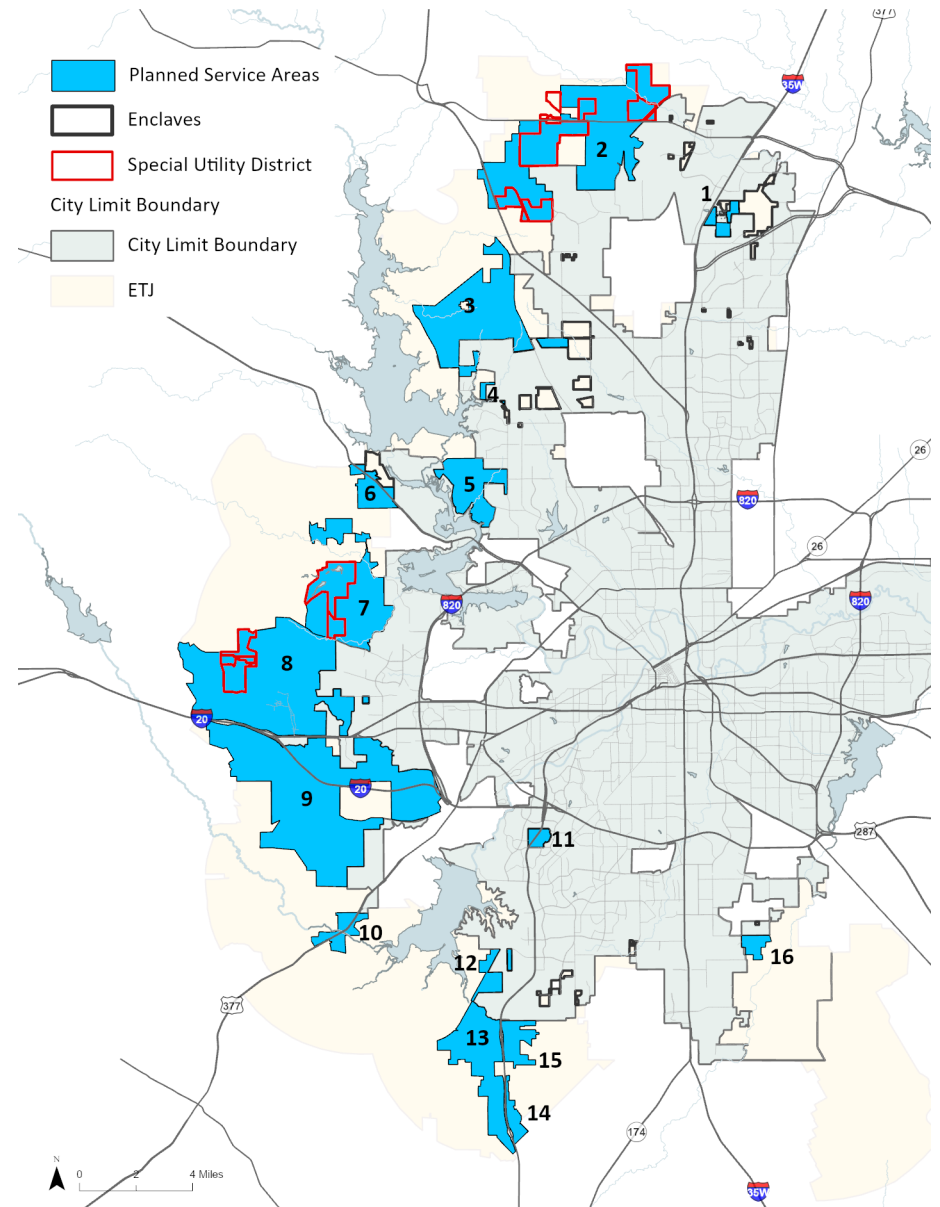
- [13\) Rock Creek Basin/Chisholm Trail Parkway West Area](#)

- [14\) Chisholm Trail Parkway East/South CR 920 Area](#)

- [15\) Chisholm Trail Parkway/East FM 1187/Cleburne Rd Area](#)

- [16\) Everman Area - Southeast](#)

20-YEAR PLANNED SERVICE AREAS



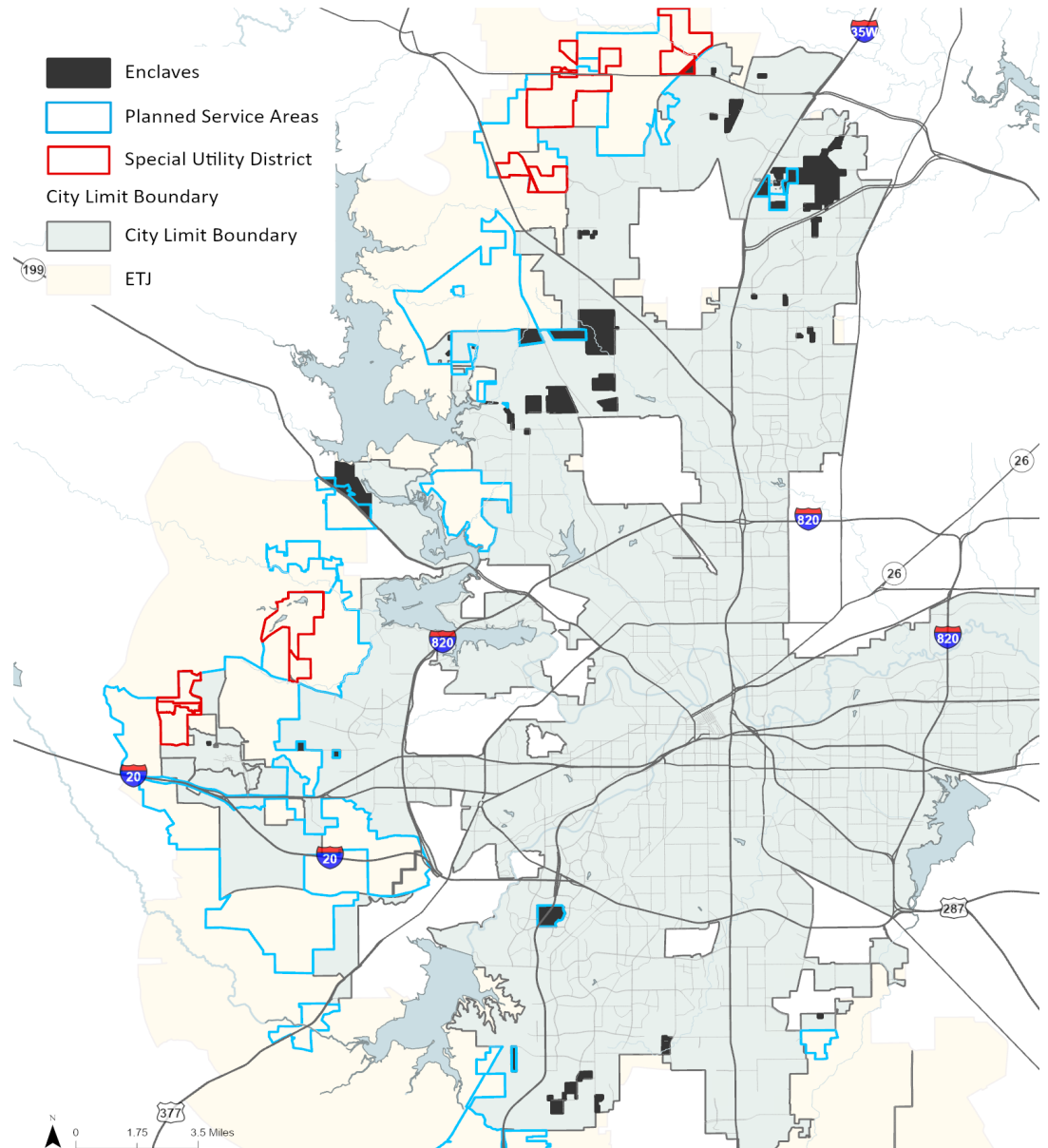
Source: City of Fort Worth Departments: Development Services, Fire & Emergency Services, IT Solutions, Planning & Data Analytics, Water, and the City Manager's Office, 2023.

ENCLAVE PSA

Enclave PSAs are islands of unincorporated ETJ land surrounded by the incorporated City of Fort Worth. Enclave PSAs are identified as Vacant, Redevelopable, Developed, or Gas Well based on their primary existing use/condition. For planning purposes, enclaves are areas within the City's ETJ that are surrounded by the corporate limits of the City and/or the corporate limits or ETJ of other municipalities or otherwise approved by City Council.

CH. 24: ANNEXATIONS

APPENDIX F: ANNEXATION POLICY & PROGRAM



Source: City of Fort Worth Departments: Development Services, Fire & Emergency Services, IT Solutions, Planning & Data Analytics, Water, and the City Manager's Office, 2023.

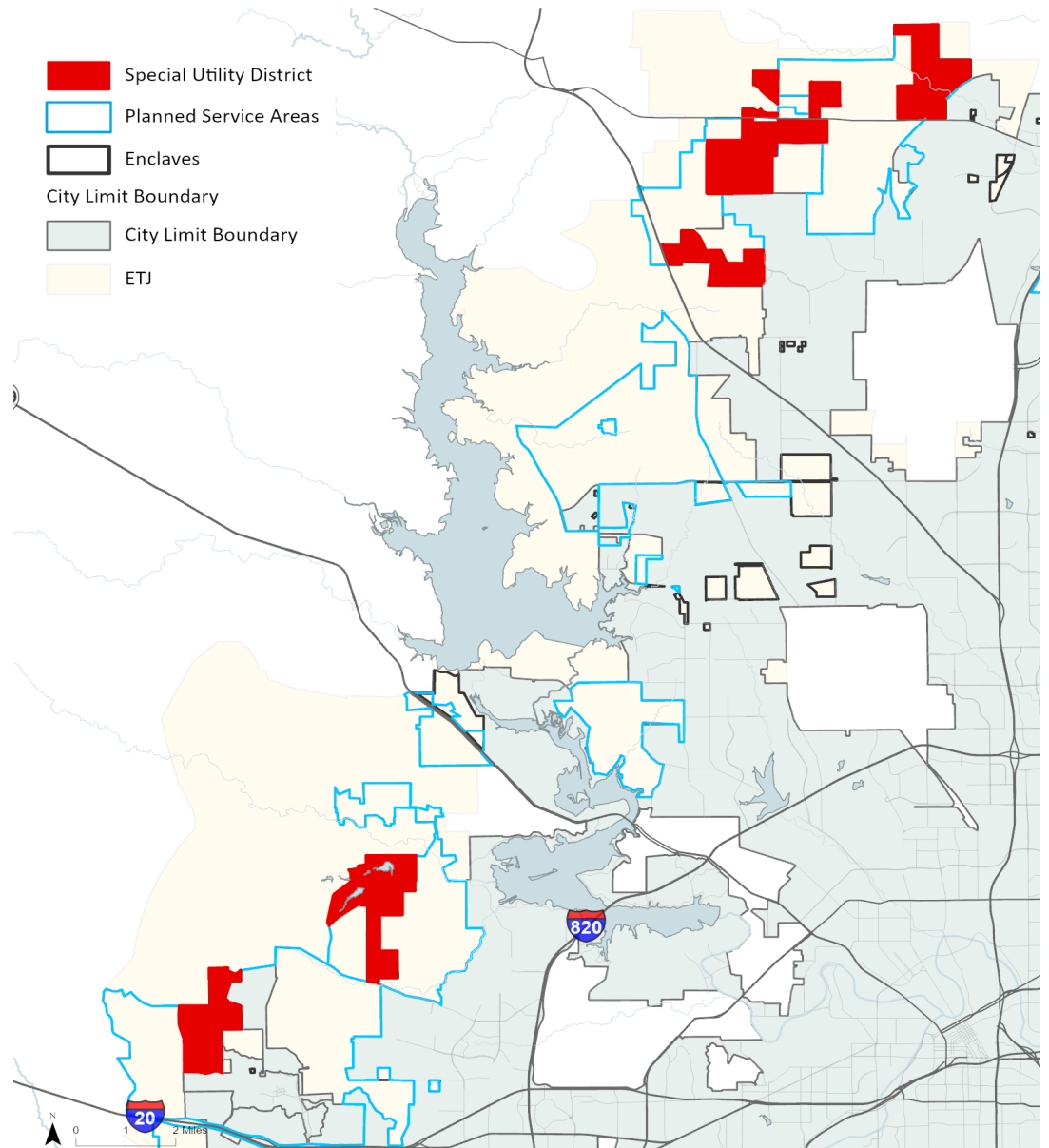
SPECIAL UTILITY DISTRICT PSA

Special Utility Districts are governmental entities created under State Law. They are endowed with rights to provide water, wastewater, drainage, and other services to facilitate development within a city's corporate boundaries and extrateritorial jurisdiction.

11

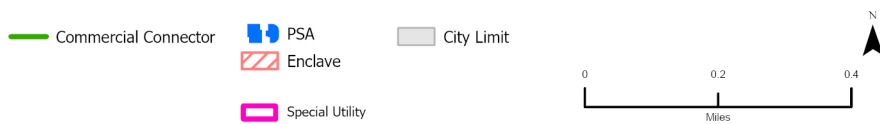
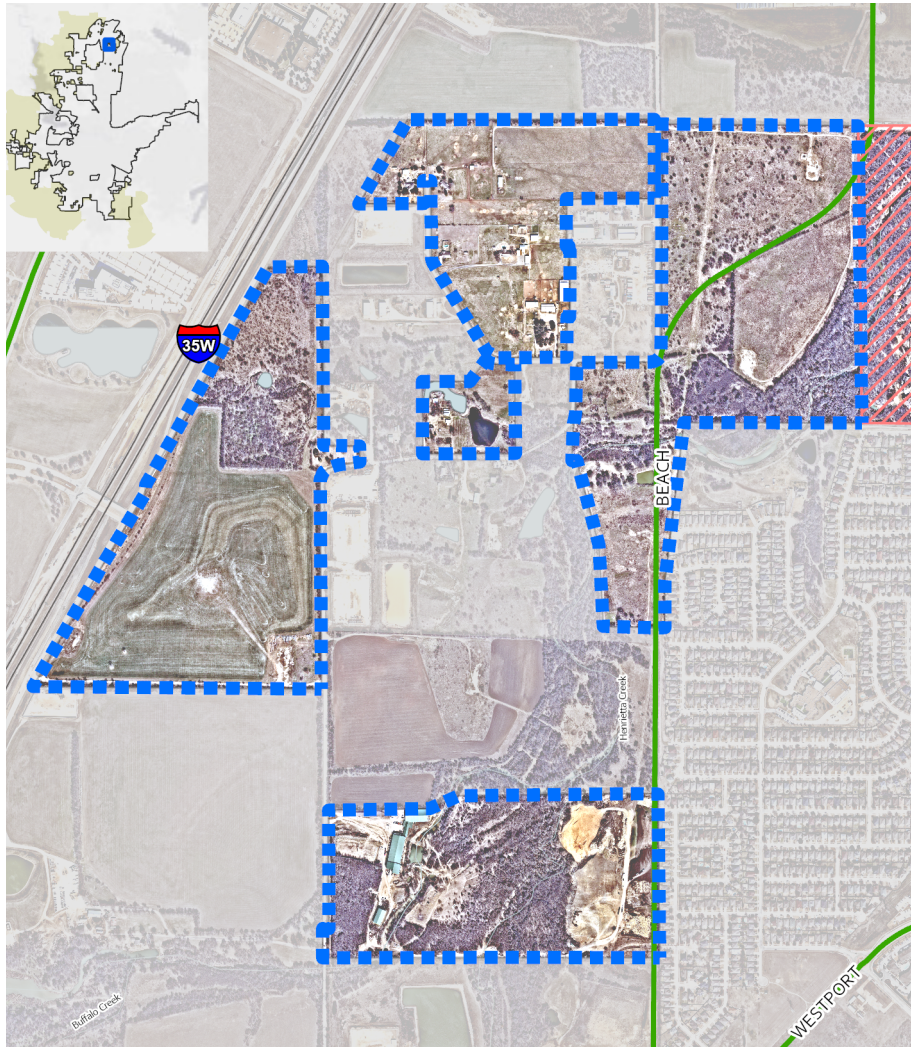
Special Utility Districts

APPENDIX G: SPECIAL UTILITY DISTRICTS

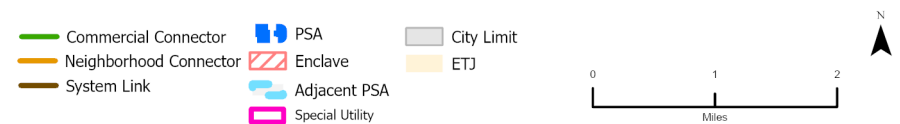
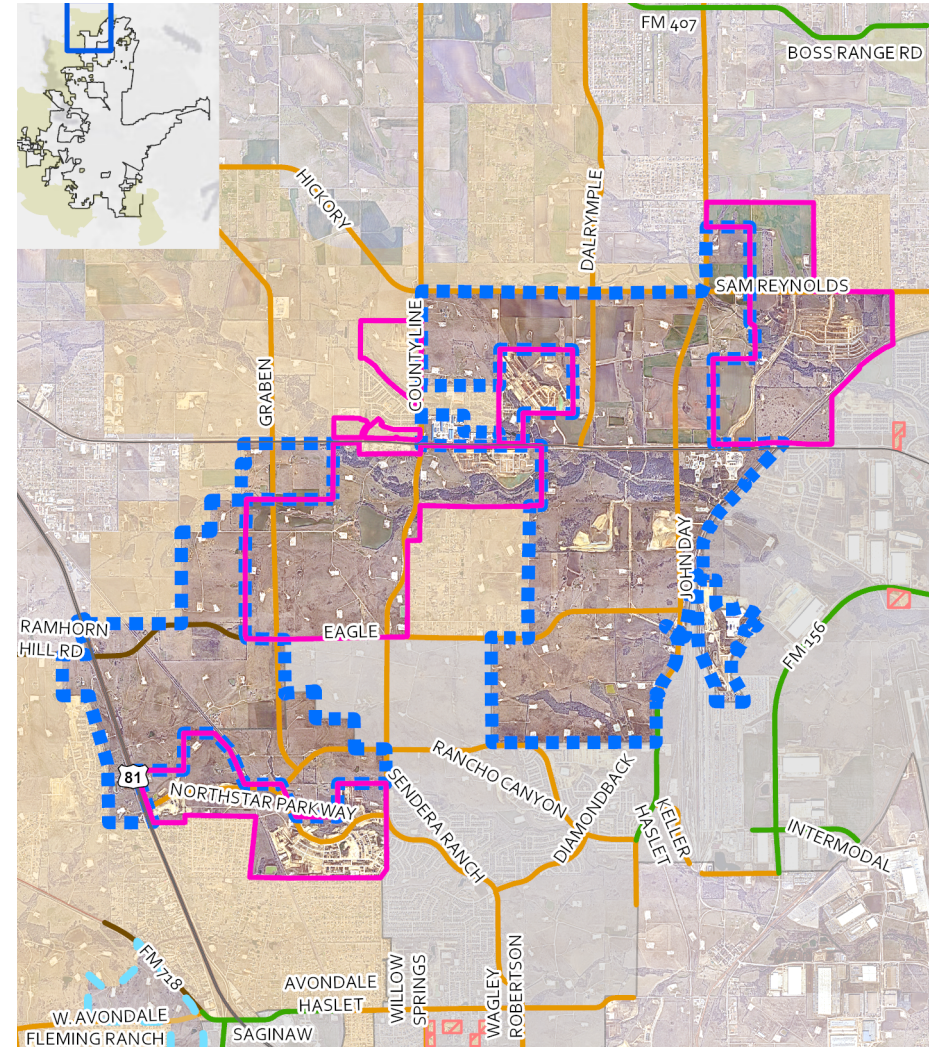


Source: City of Fort Worth Departments: Development Services, Fire & Emergency Services, IT Solutions, Planning & Data Analytics, Water, and the City Manager's Office, 2023.

1) FAR NORTH AREA - EAST

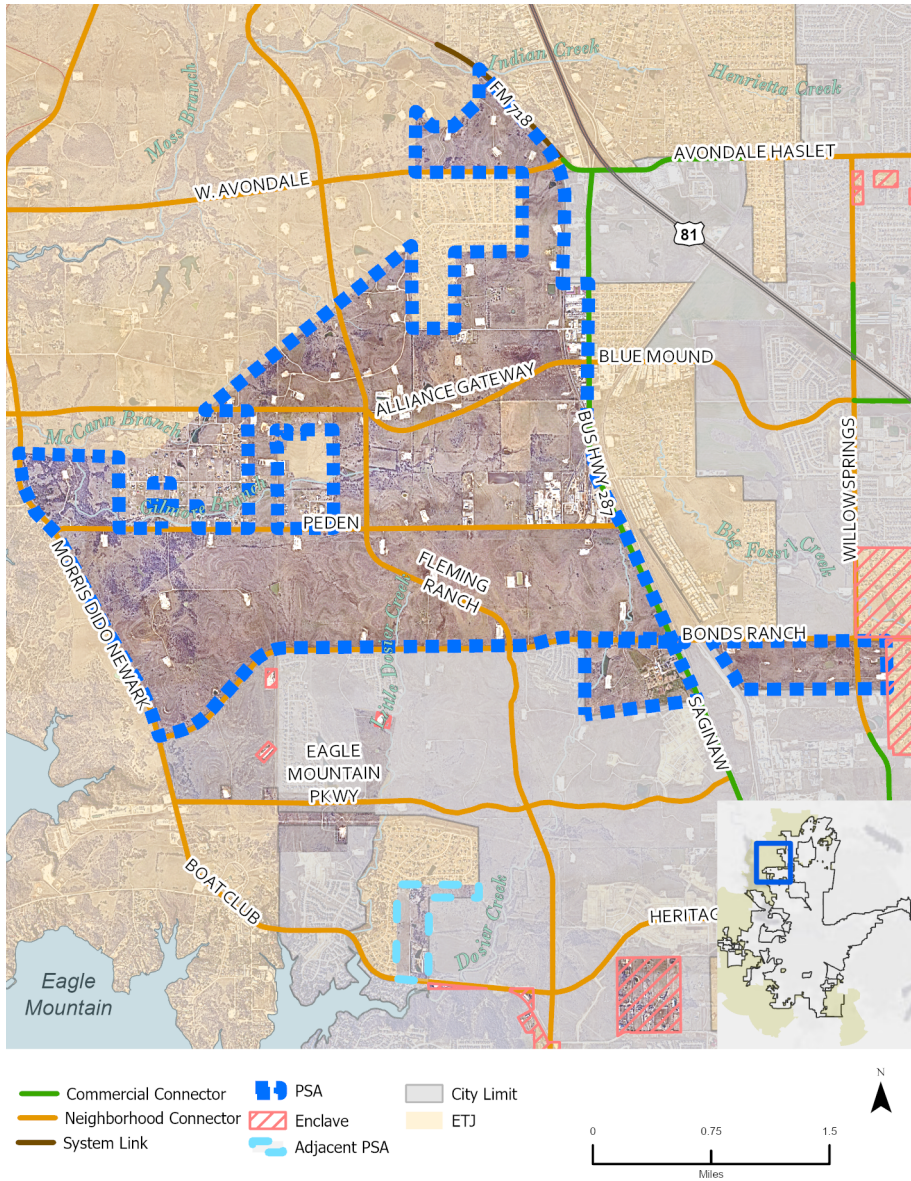


2) FAR NORTH AREA - WEST



Source: City of Fort Worth Departments: Development Services, Fire & Emergency Services, IT Solutions, Planning & Data Analytics, Water, and the City Manager's Office, 2023.

3) EAGLE MOUNTAIN/ BUSINESS 287 AREA

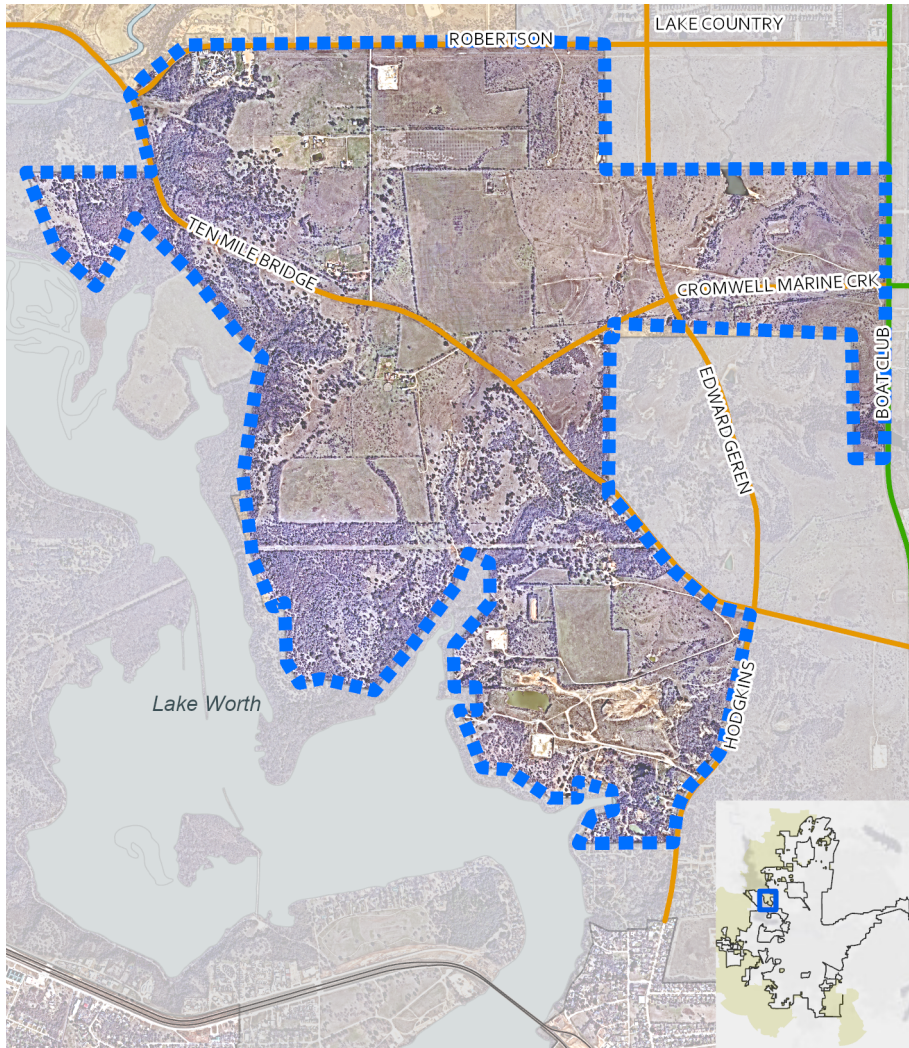


4) BOAT CLUB & BAILEY BOSWELL INTERSECTION

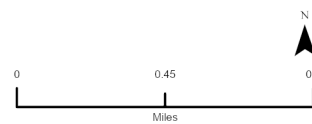


Source: City of Fort Worth Departments: Development Services, Fire & Emergency Services, IT Solutions, Planning & Data Analytics, Water, and the City Manager's Office, 2023.

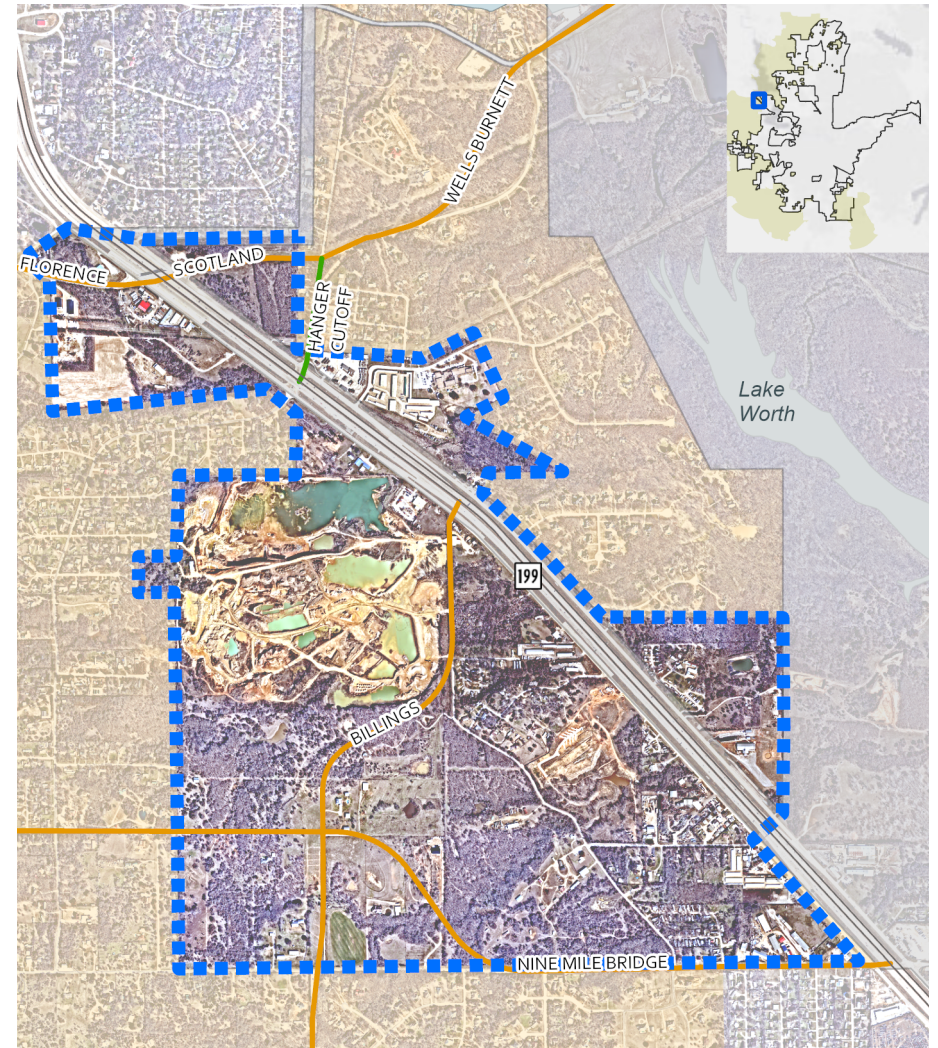
5) TEN MILE BRIDGE & CROMWELL MARINE CREEK AREA



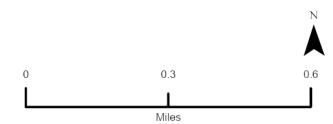
- Commercial Connector
- Neighborhood Connector
- PSA
- City Limit
- ETJ



6) JACKSBORO HIGHWAY/NINE MILE BRIDGE AREA

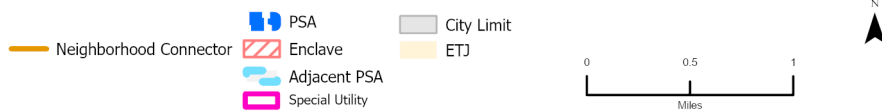
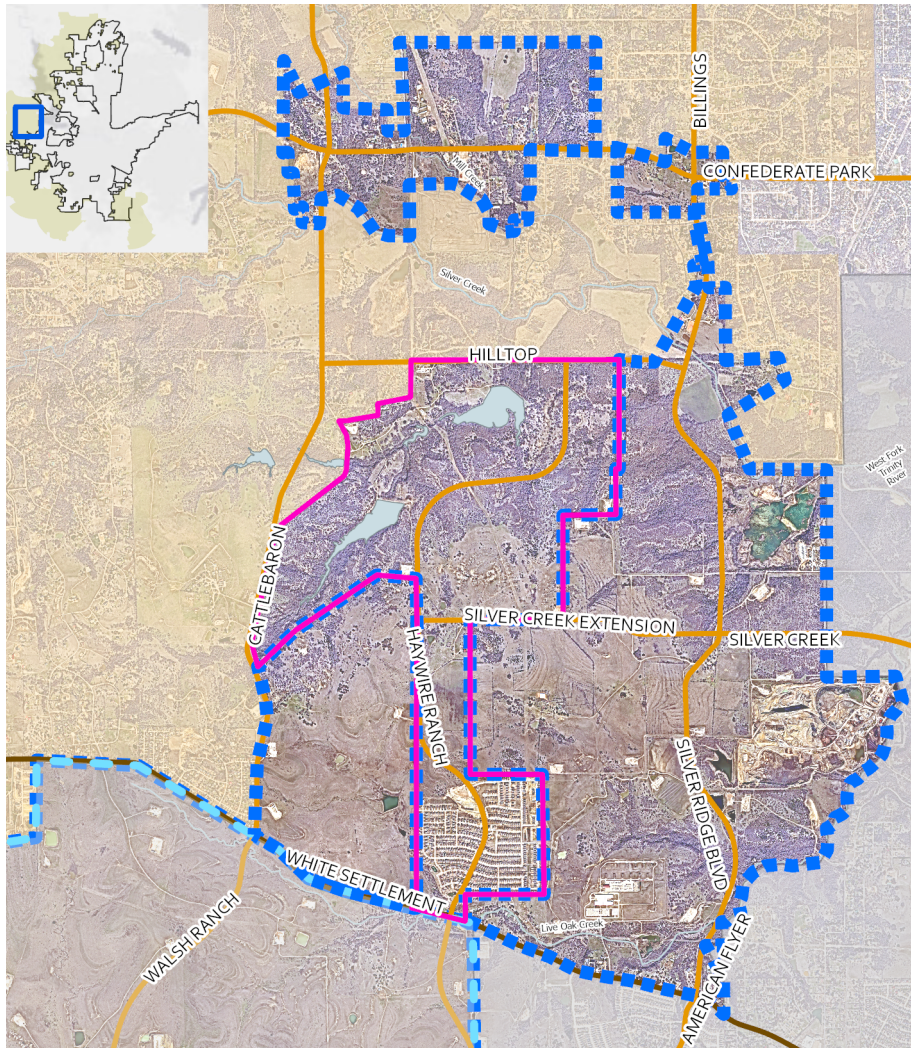


- Commercial Connector
- Neighborhood Connector
- PSA
- City Limit
- ETJ
- Enclave
- Adjacent PSA

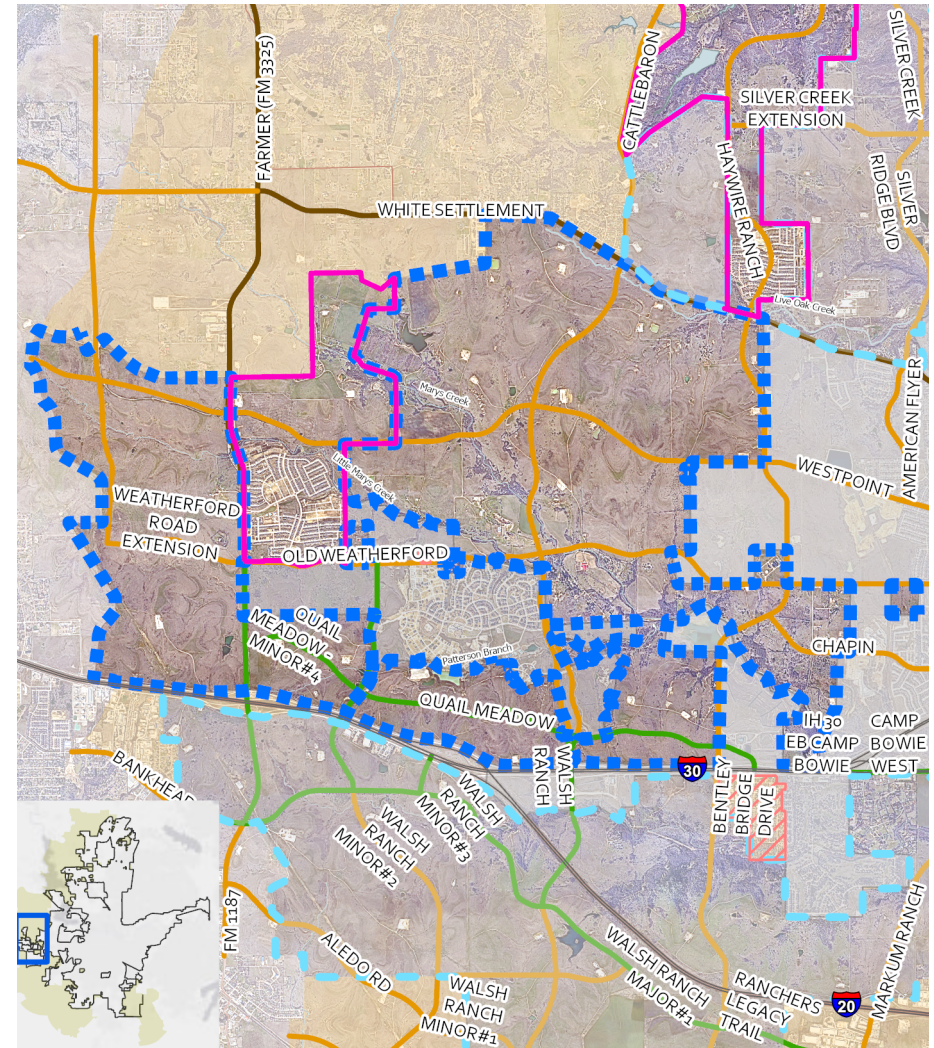


Source: City of Fort Worth Departments: Development Services, Fire & Emergency Services, IT Solutions, Planning & Data Analytics, Water, and the City Manager's Office, 2023.

7) HAYWIRE/SILVER CREEK AREA

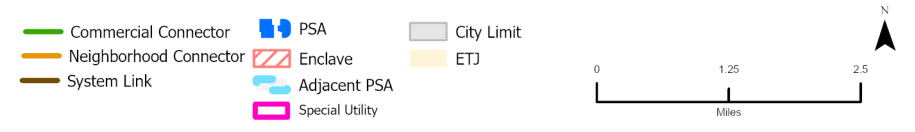
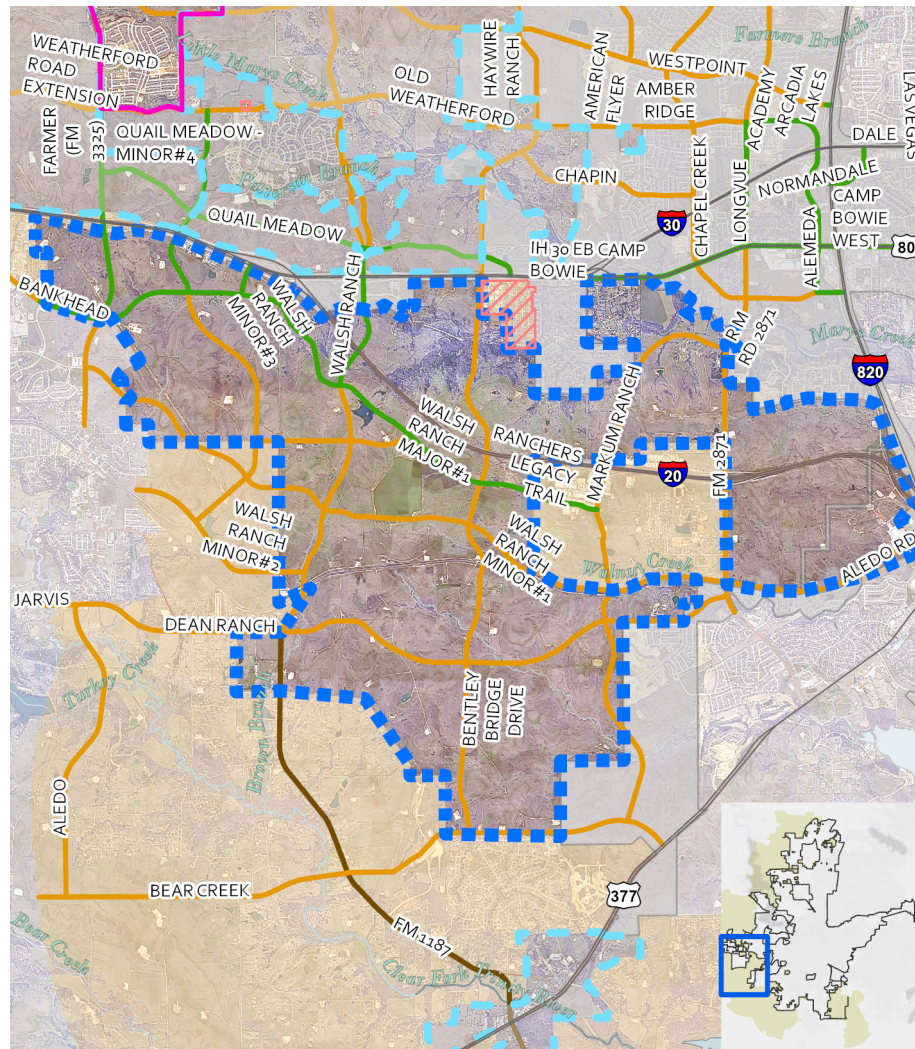


8) WALSH RANCH NORTH/FM 3325 AREA

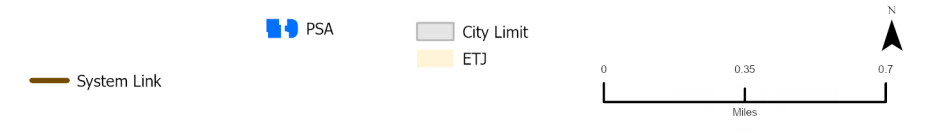
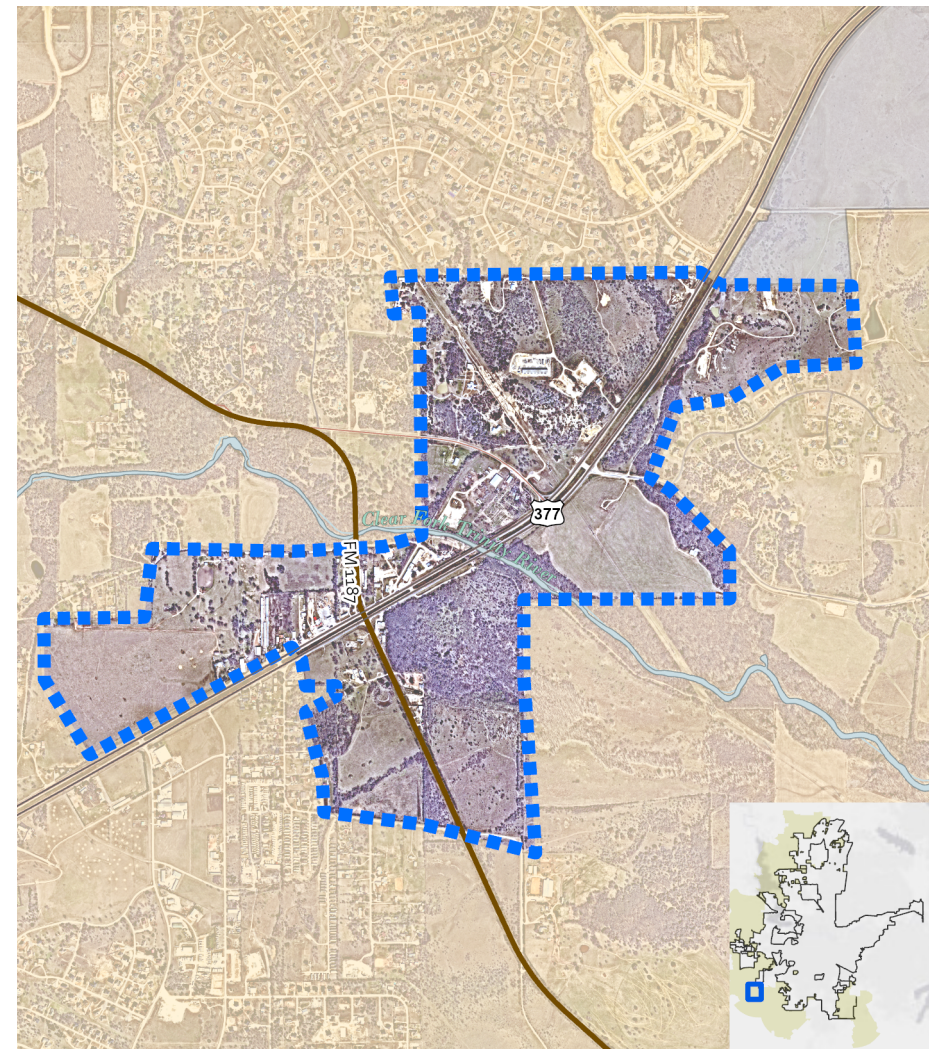


Source: City of Fort Worth Departments: Development Services, Fire & Emergency Services, IT Solutions, Planning & Data Analytics, Water, and the City Manager's Office, 2023.

9) WALSH RANCH SOUTH/VEALE RANCH AREA

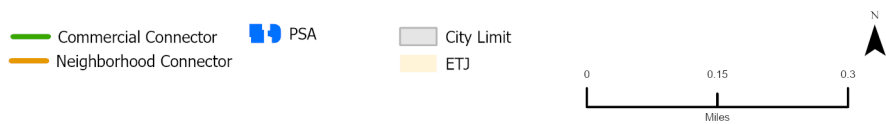


10) US 377 & FM 1187 INTERSECTION

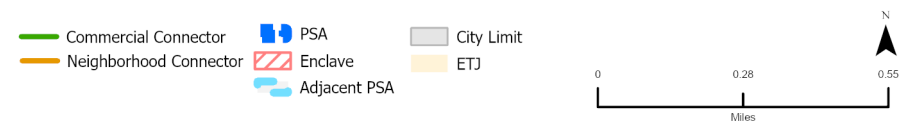
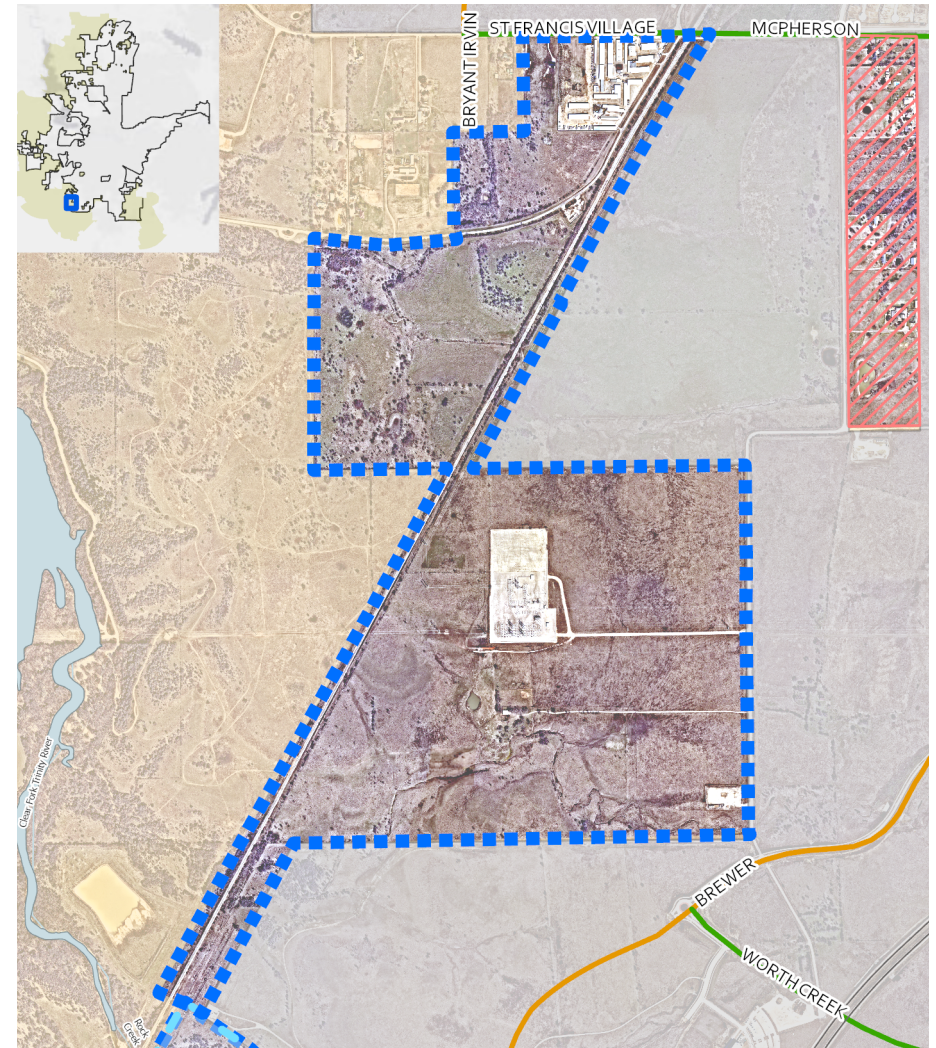


Source: City of Fort Worth Departments: Development Services, Fire & Emergency Services, IT Solutions, Planning & Data Analytics, Water, and the City Manager's Office, 2023.

11) OAKMONT/CHISHOLM TRAIL PARKWAY AREA

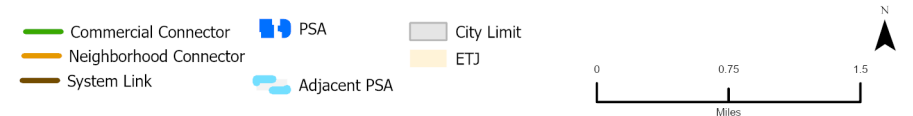
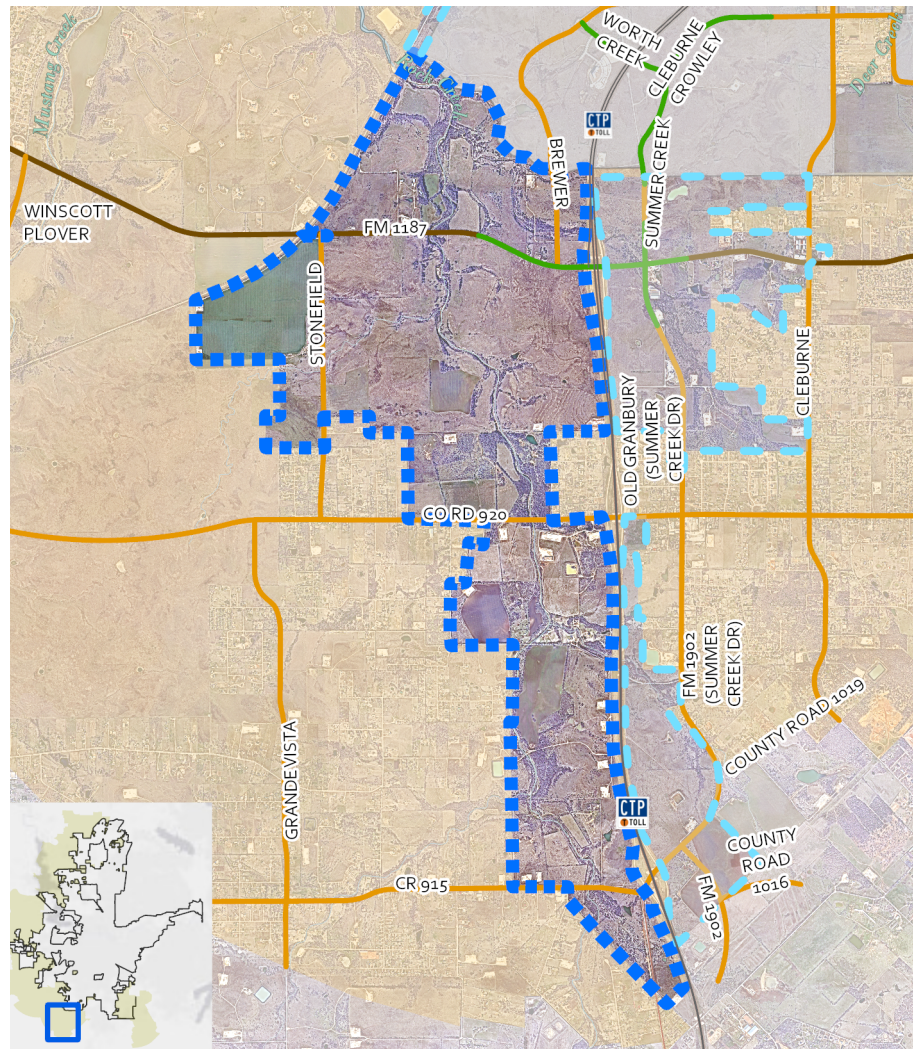


12) OLD GRANBURY RD/FWWR/TARLETON NORTH AREA

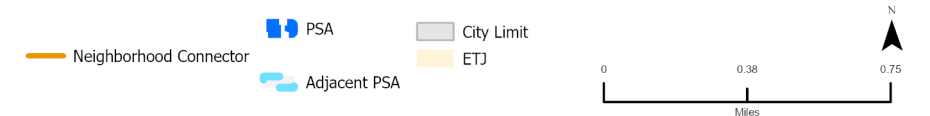
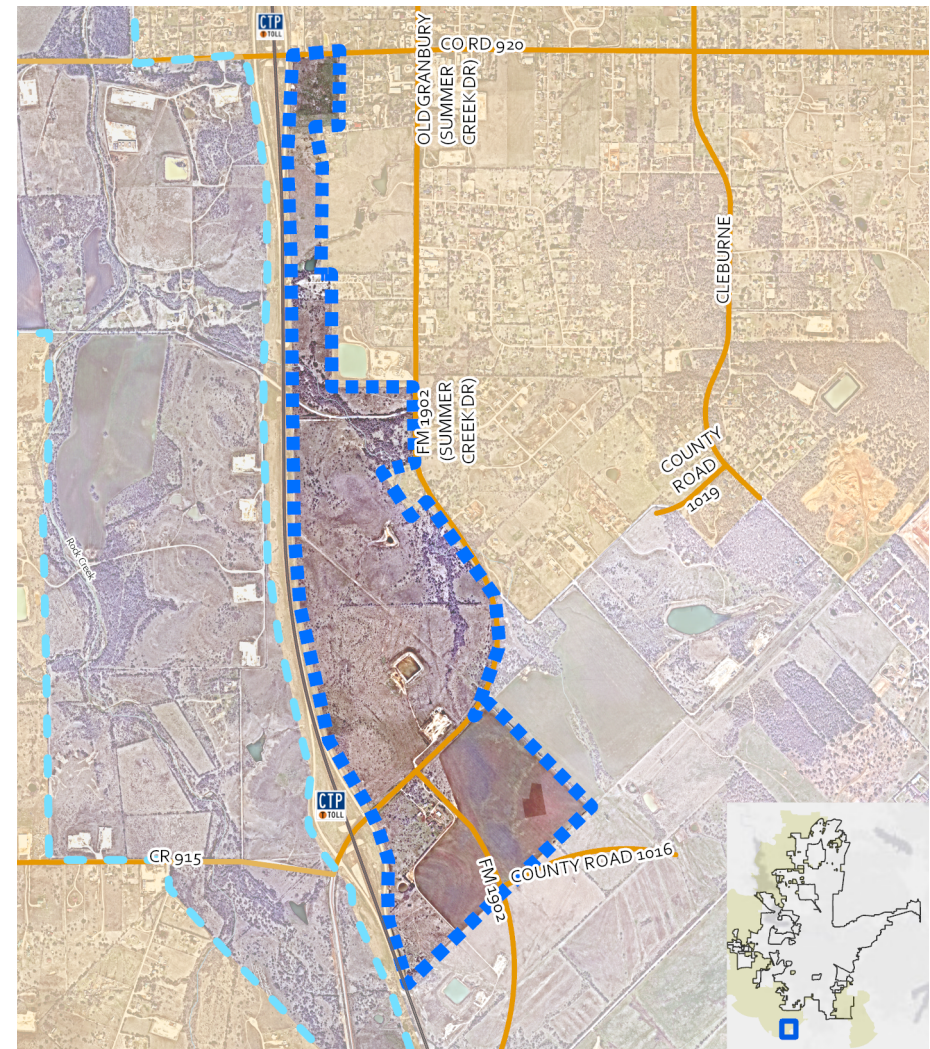


Source: City of Fort Worth Departments: Development Services, Fire & Emergency Services, IT Solutions, Planning & Data Analytics, Water, and the City Manager's Office, 2023.

13) ROCK CREEK BASIN & CHISHOLM TRAIL PARKWAY WEST AREA

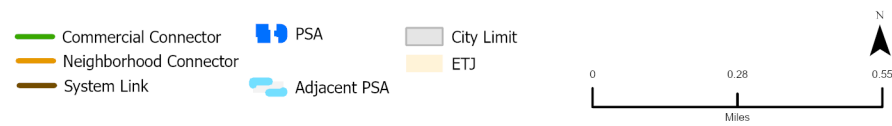
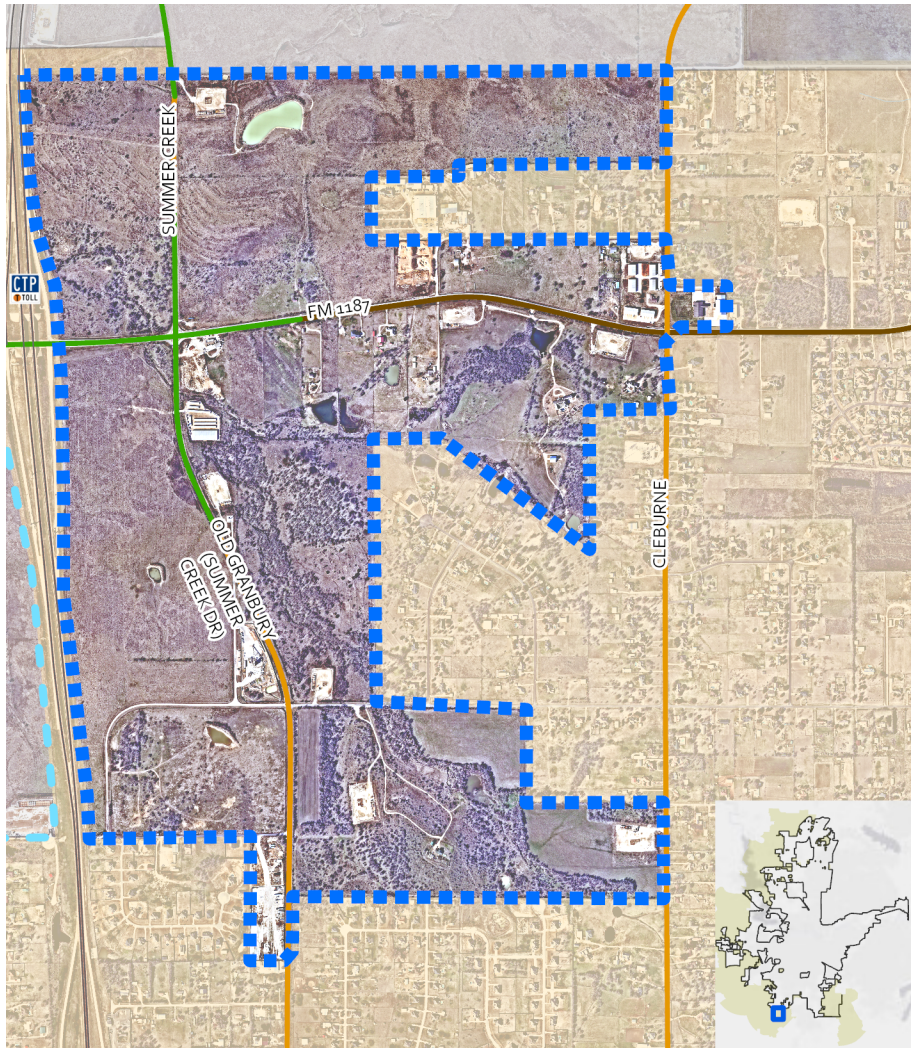


14) CHISHOLM TRAIL PARKWAY EAST/SOUTH CR 920 AREA

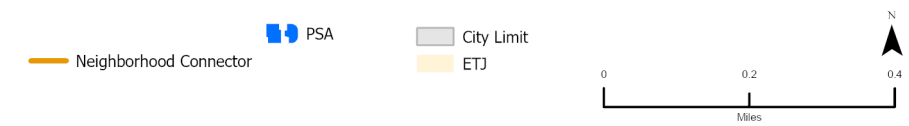
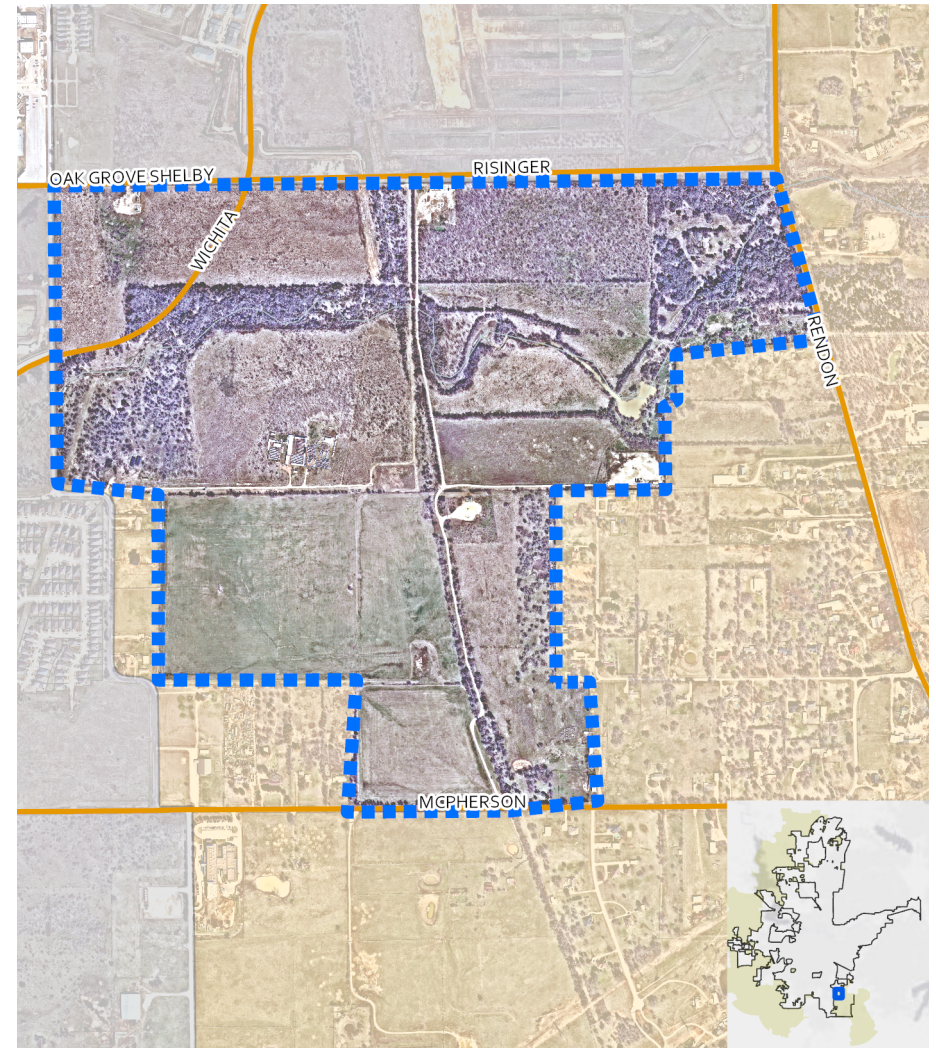


Source: City of Fort Worth Departments: Development Services, Fire & Emergency Services, IT Solutions, Planning & Data Analytics, Water, and the City Manager's Office, 2023.

15) CHISHOLM TRAIL PARKWAY/EAST FM 1187/CLEBURNE RD AREA



17) EVERMAN AREA - SOUTHEAST



Source: City of Fort Worth Departments: Development Services, Fire & Emergency Services, IT Solutions, Planning & Data Analytics, Water, and the City Manager's Office, 2023.