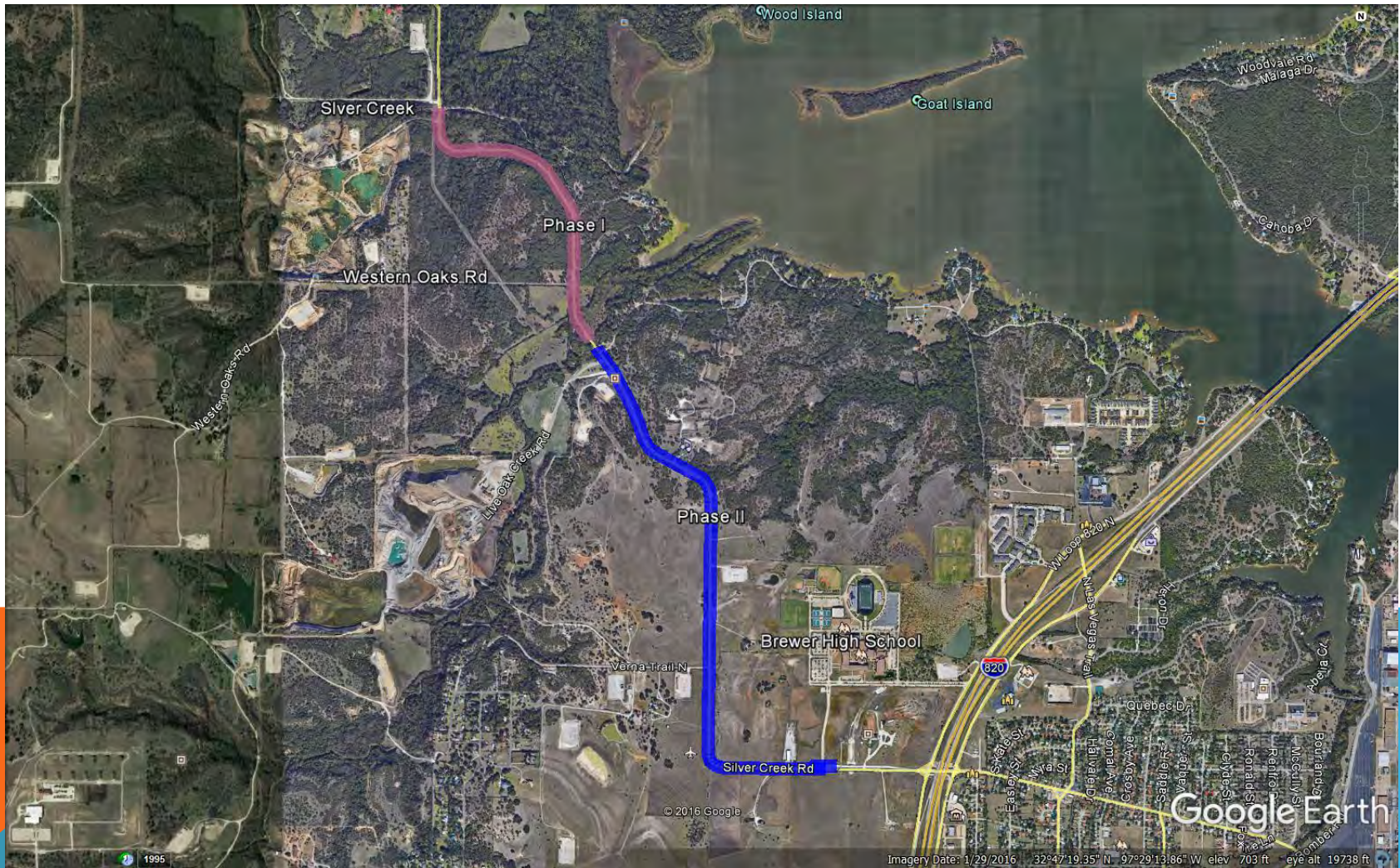


SILVER CREEK ROAD - PROJECT NO. 02101



PHASING

PHASE I

- Limits: Live Oak Creek bridge to Silver Creek bridge
- Scope: pulverize and overlay - completed in 2016

PHASE II (Brewer Dr. to Silver Creek bridge)

Phase IIA

- concrete pavement panel replacement (Brewer Dr. to beginning of asphalt)
 - Pulverize, overlay and add shoulders on segments not requiring ROW *
- * Where feasible and practical

Phase IIB

- Replace undersized culverts
- Construct auxiliary lanes at Silver Creek Materials
- Improve two 90-degree curves
- Pulverize, overlay and add shoulders on segments requiring ROW

PROPOSED SILVER CREEK ROAD IMPROVEMENTS



SECTION 2

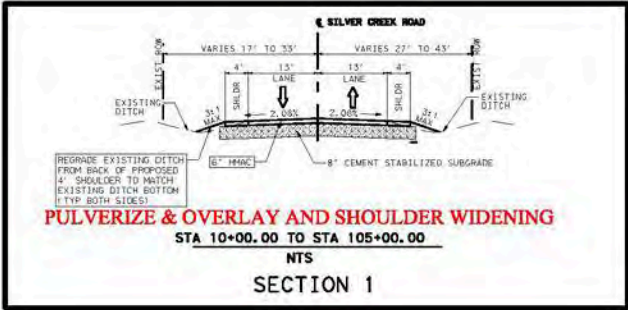


SILVER CREEK MATERIALS



SECTION 1

Google Earth



PULVERIZE & OVERLAY AND SHOULDER WIDENING

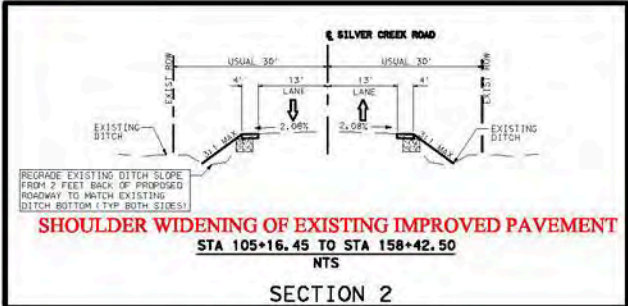
STA 10+00.00 TO STA 105+00.00

NTS

SECTION 1

The project will include:

- Reconstruction of the existing pavement from the end of the boulevard section at Brewer High School entrance to Live Oak Creek bridge (excluding the bridge) with wider shoulders
- Construction of shoulders throughout Phase 1 (from Live Oak Bridge to Silver Creek Bridge)
- Consideration for acceleration and left turn lanes at Silver Creek Materials



SHOULDER WIDENING OF EXISTING IMPROVED PAVEMENT

STA 105+16.45 TO STA 158+42.50

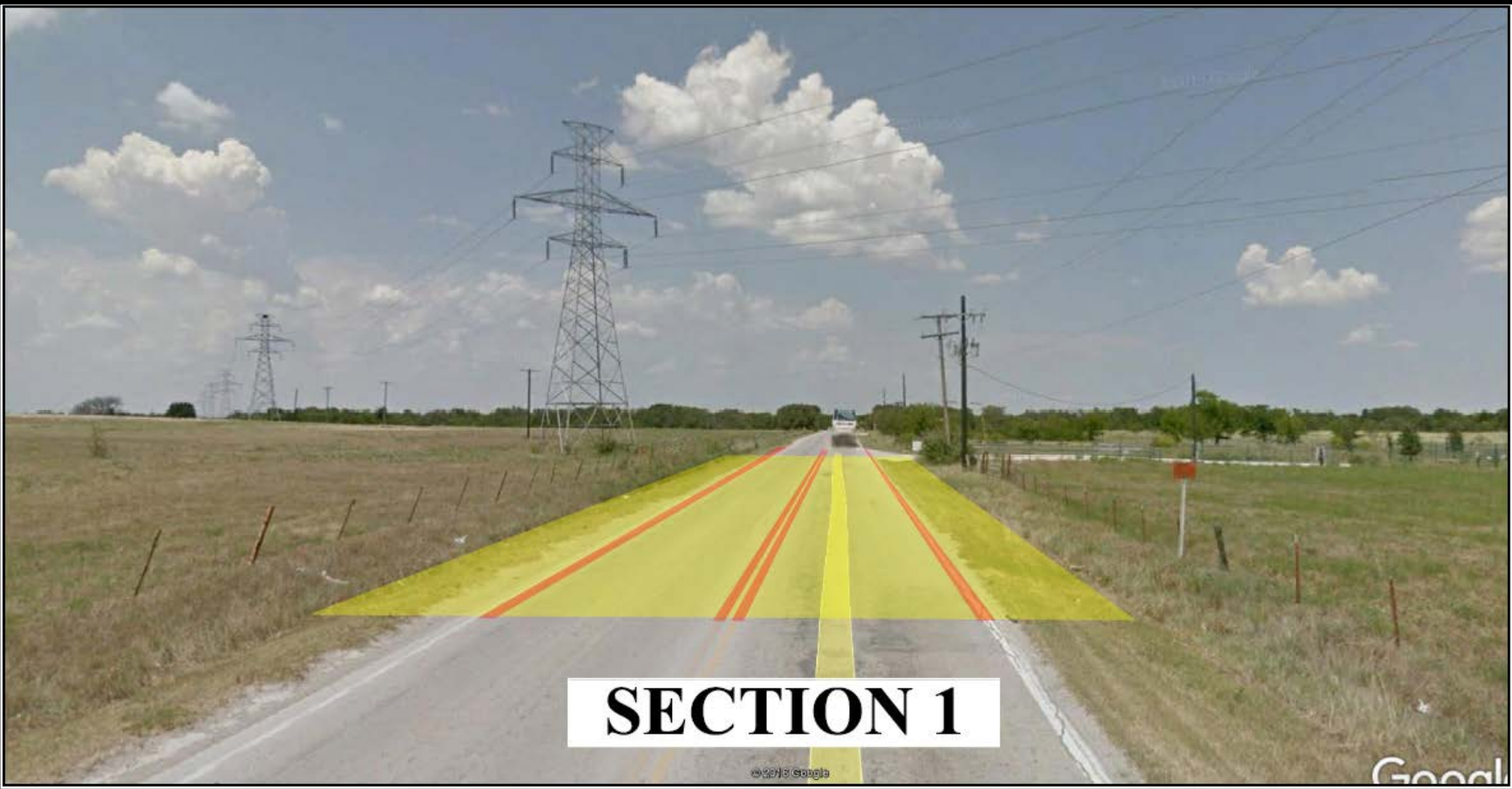
NTS

SECTION 2

PRELIMINARY
 NOT FOR CONSTRUCTION PURPOSES
 03/17/2017



MV Engineering, Inc.
 FIRM REG. NO. F-9474
 14850 Quorum Dr., Ste 220
 Dallas, Texas, 75254
 Ph: (972)733-3618 Fax: (972)468-6986



SECTION 1

© 2013 Google

Google



SECTION 2



SILVER CREEK MATERIALS

CONSTRUCTION SCHEDULE

PHASE I scope (pulverize and overlay) complete

PHASE II

- Phase IIA - start Nov 2017
- Phase IIB
 - Early start Fall 2018
 - Late start Spring 2019

Construction duration depends on scope to be included in each phase