



Community Information Meeting for
W. Long Ave & Angle Ave
Intersection Improvement Project

City Project No. 101583
Council District 2

Project Manager: Brendan McInnes, PE
Project Engineer: Bridgefamer & Associates
Contractor: Reyes Group

May 25, 2022

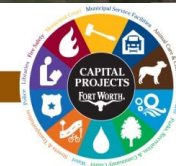
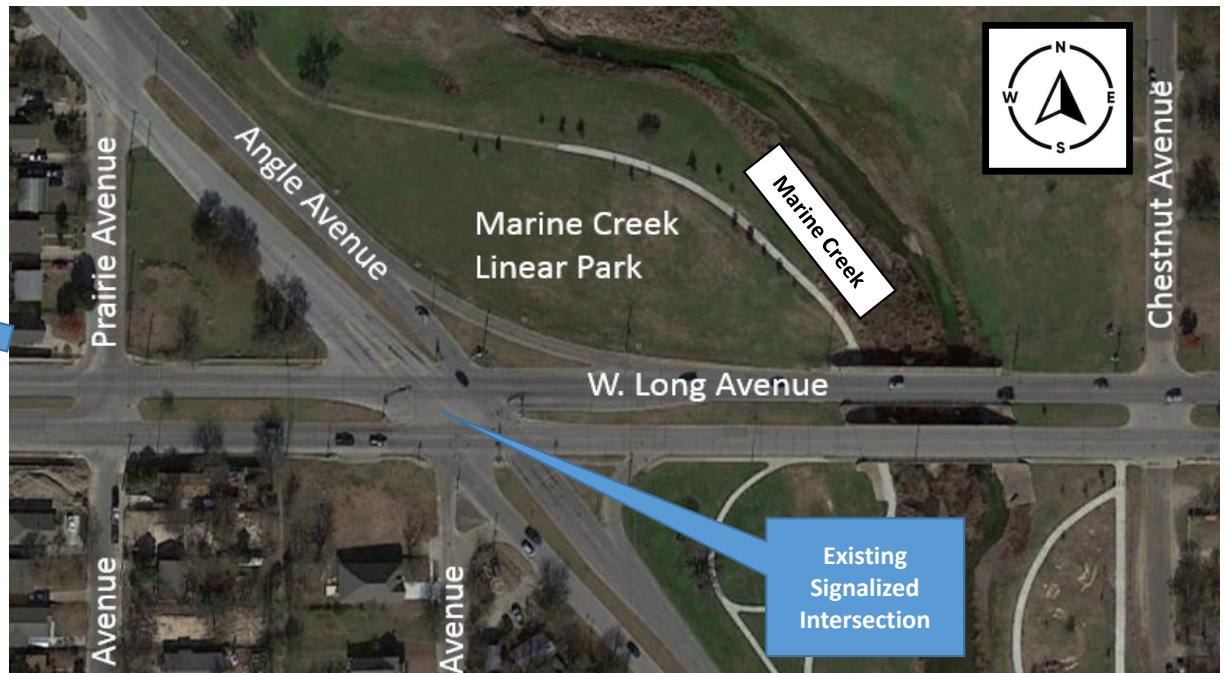
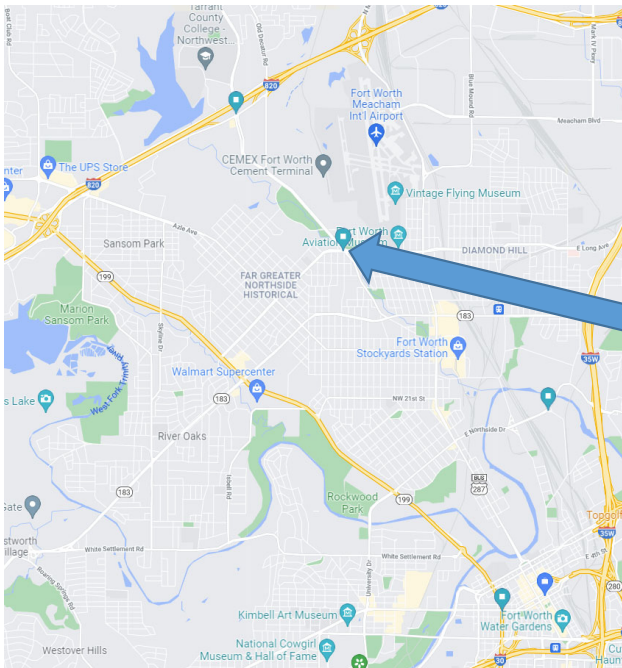


Agenda

- **Introduction of City Staff and Project Engineer**
- **Project Location**
- **Project Background**
- **Proposed Improvements**
- **Schedule and Notifications**
- **Typical Construction Process**



Project Location



Project Background

- **Existing 5 leg intersection on skew angle**
- **Kirkpatrick Middle School, Dolores Huerta, Milton L. Kirkpatrick, Washington Heights Elementary Schools along W. Long Ave**
- **Objective**
 - **Improve safety by making the intersection more compact**
 - **Reduce vehicle turning path lengths**
 - **Improving pedestrian facilities**

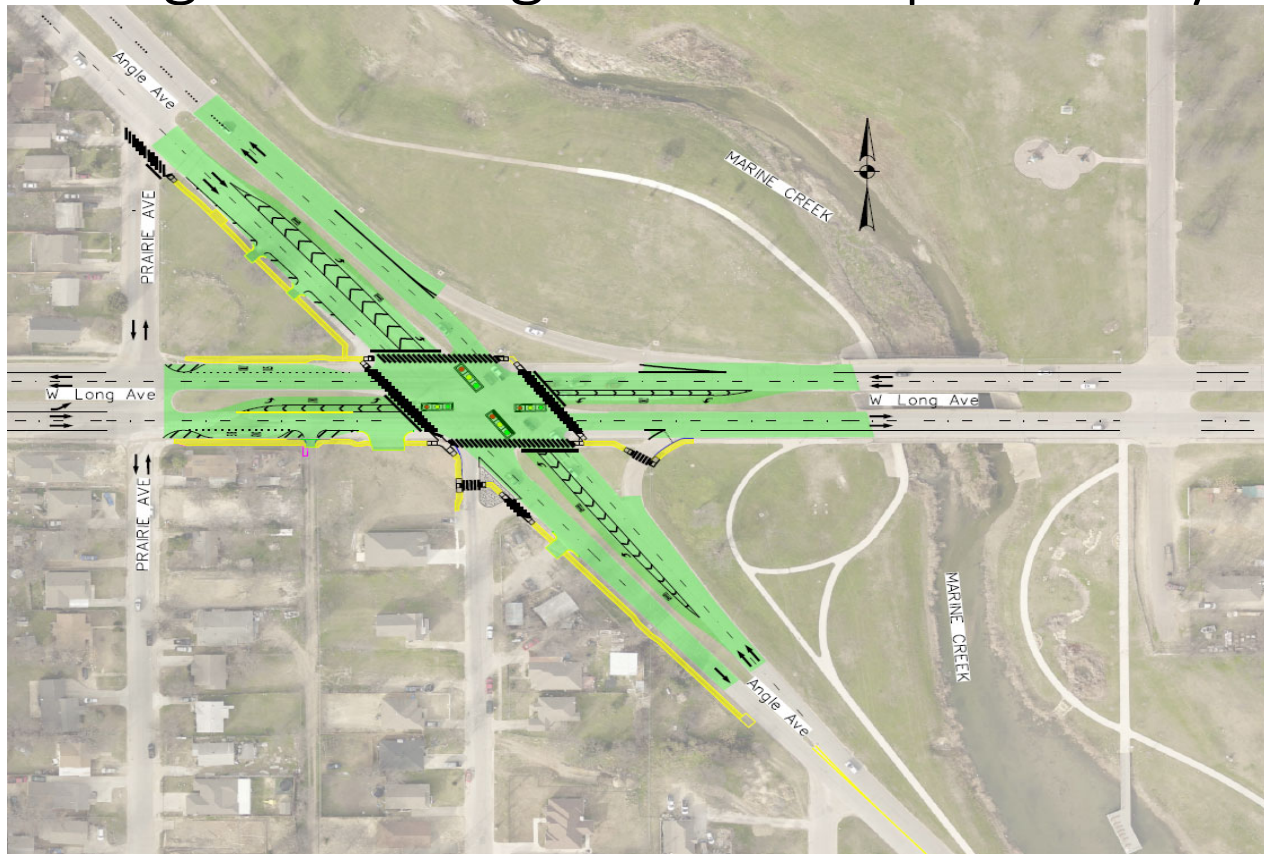


Proposed Improvements

- **Pavement widening**
- **Left turn modifications**
- **Pavement markings**
- **ADA Ramps**
- **Traffic Signal Replacement**
- **Illumination**
- **Storm drain modifications**
- **Water and Sanitary Sewer Adjustments**



W. Long Ave & Angle Ave - Proposed Layout





Project Schedule and Notification

- Estimated Construction Start: July/August 2022
- Construction Duration: 310 Calendar Days
- Estimated Construction Completion: Summer 2023
- Working Hours
 - 7 AM – 6 PM M-F (Standard Hours)
 - 9 AM – 5 PM (Weekend Hours if Requested in Writing and Approved)
- Project Notification
 - Project Signs and Message Boards (Placed 7 Days Before Construction)
 - Door Hangers on Residences and Businesses (7 Days Before Construction)

Project schedule could be affected by unforeseen events such as utility conflicts or weather

Typical Construction Process

- Notifications
- Traffic Control Implementation
- Erosion Control Plan Implementation
- Milling and full depth pavement repairs
- Site Clearing
- Traffic Signal Installation
- Pavement and Sidewalk Construction
- Asphalt Overlay and final pavement markings
- Landscaping / Sodding
- Traffic Control Removal
- Final Clean Up

TRAFFIC CONTROL PLAN NARRATIVE

PHASE 1 STAGE 1

1. MAINTAIN TRAFFIC IN EXISTING CONFIGURATION ON EXISTING PAVEMENT.
2. PLACE ADVANCE WARNING SIGNS AS SHOWN AND IN ACCORDANCE WITH BC STANDARDS.
3. INSTALL STORM WATER POLLUTION PREVENTION DEVICES AS SHOWN IN THE EROSION CONTROL PLANS.
4. MILL EXISTING ASPHALT PAVEMENT SURFACE AND COMPLETE FULL DEPTH PAVEMENT REPAIRS. UTILIZE TCP STANDARDS FOR LANE CLOSURES AS NEEDED.
5. PLACE WORK ZONE PAVEMENT MARKINGS TO MAINTAIN TRAFFIC IN EXISTING CONFIGURATION AS SHOWN. UTILIZE TCP STANDARDS FOR LANE CLOSURES AS NEEDED.

PHASE 1 STAGE 2

1. CLOSE RIGHT LANES AS SHOWN.
2. MAINTAIN EXISTING TRAFFIC SIGNAL IN OPERATION.
3. PLACE WATER BARRIER AND WORK ZONE PAVEMENT MARKINGS FOR TEMPORARY PEDESTRIAN ROUTE AS SHOWN.
4. SHIFT PEDESTRIAN ROUTES AND STAGE CONSTRUCT SIDEWALKS AND DRIVEWAYS AS SHOWN IN TEMPORARY SIDEWALK PLANS.
5. CONSTRUCT PROPOSED TRAFFIC SIGNALS INCLUDING CONDUIT, FOUNDATIONS, POLES, AND MAST ARMS.
6. PLACE PROPOSED TRAFFIC SIGNAL INTO SERVICE AND TAKE EXISTING SIGNAL OUT OF SERVICE.
7. CONSTRUCT DRAINAGE AND PAVEMENT ON OUTSIDE AS SHOWN.

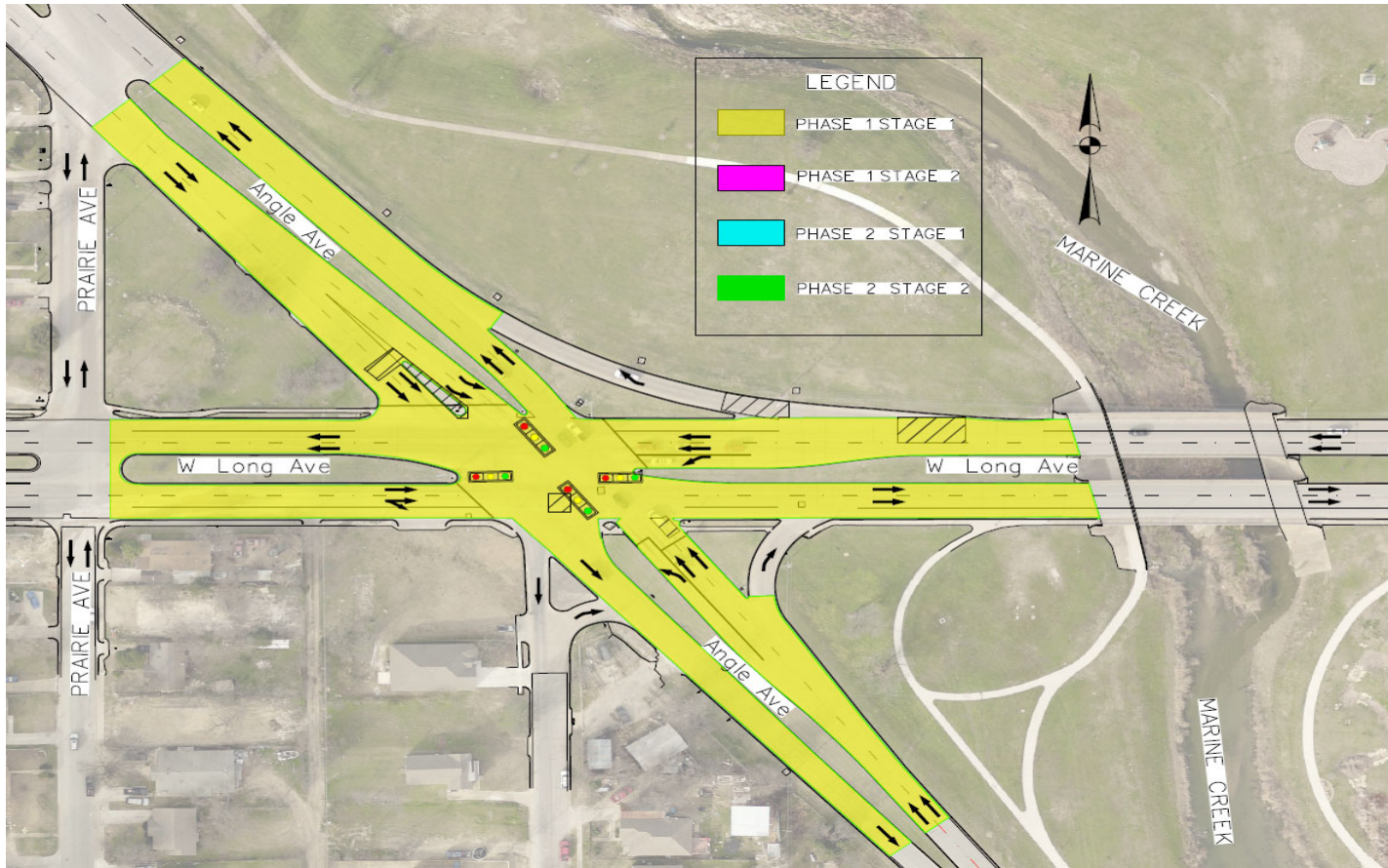
PHASE 2 STAGE 1

1. CLOSE LEFT LANES AS SHOWN.
2. ADJUST TRAFFIC SIGNAL OPERATION FOR LANE CONFIGURATION AS NEEDED.
3. CONSTRUCT DRAINAGE, ILLUMINATION, AND PAVEMENT WIDENING IN MEDIAN AS SHOWN.

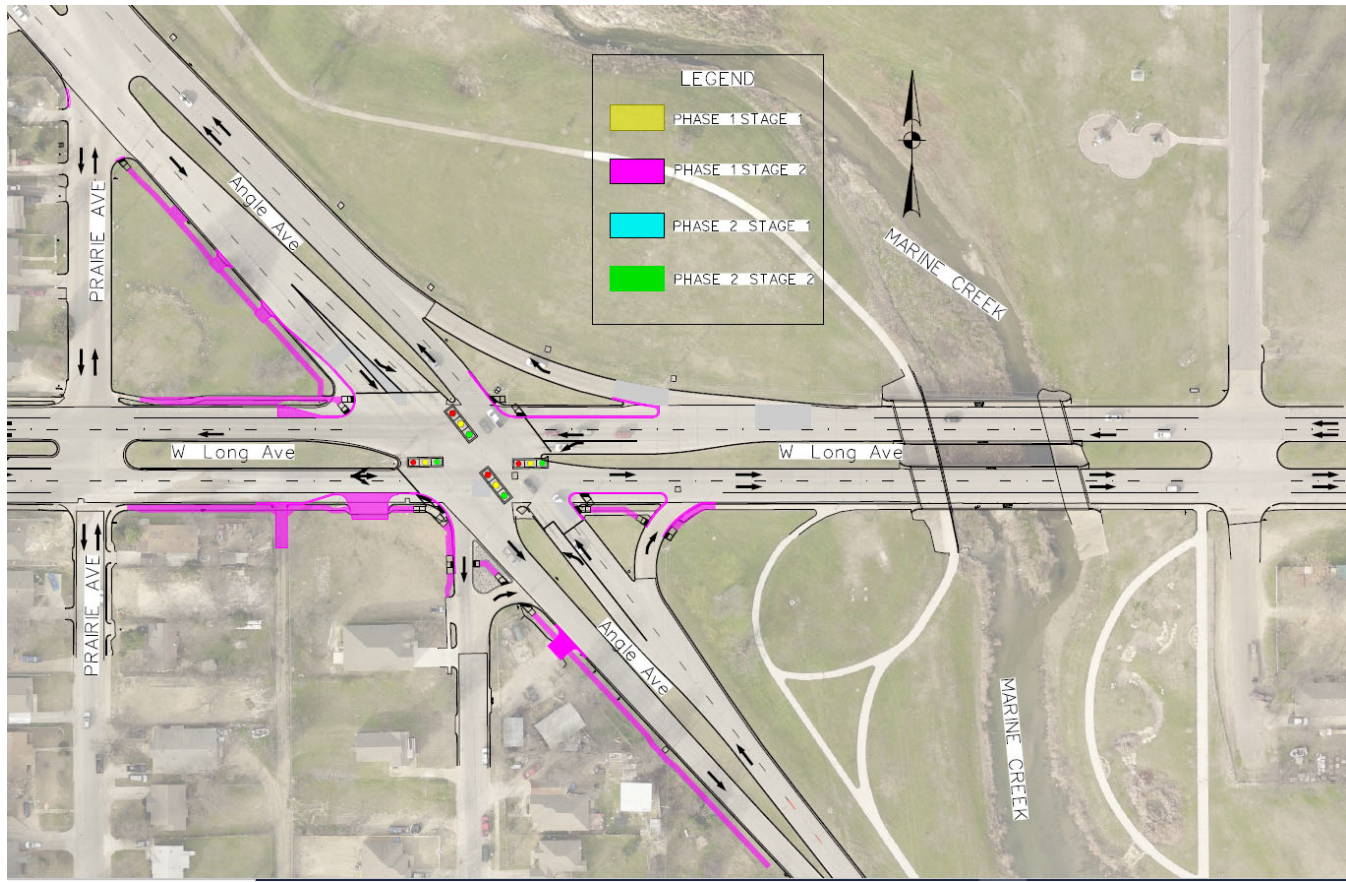
PHASE 2 STAGE 2

1. PLACE SHORT TERM PAVEMENT MARKINGS. SHIFT TRAFFIC TO FINAL CONFIGURATION.
2. CONSTRUCT FINAL ASPHALT OVERLAY. UTILIZE TCP STANDARDS FOR LANE CLOSURES AS NEEDED.
3. FOLLOWING COMPLETION OF PAVING IMPROVEMENTS, INSTALL ALL PERMANENT SIGNING AND PAVEMENT MARKINGS UTILIZING TCP STANDARDS FOR LANE CLOSURES AS NEEDED.
4. PLACE PROPOSED TRAFFIC SIGNAL INTO FINAL OPERATION.
5. PERFORM FINAL CLEAN UP AND COMPLETE ALL PUNCH LIST ITEMS. LEAVE ADVANCE WARNING SIGNS IN PLACE UNTIL SIGN REMOVAL IS APPROVED BY THE ENGINEER.

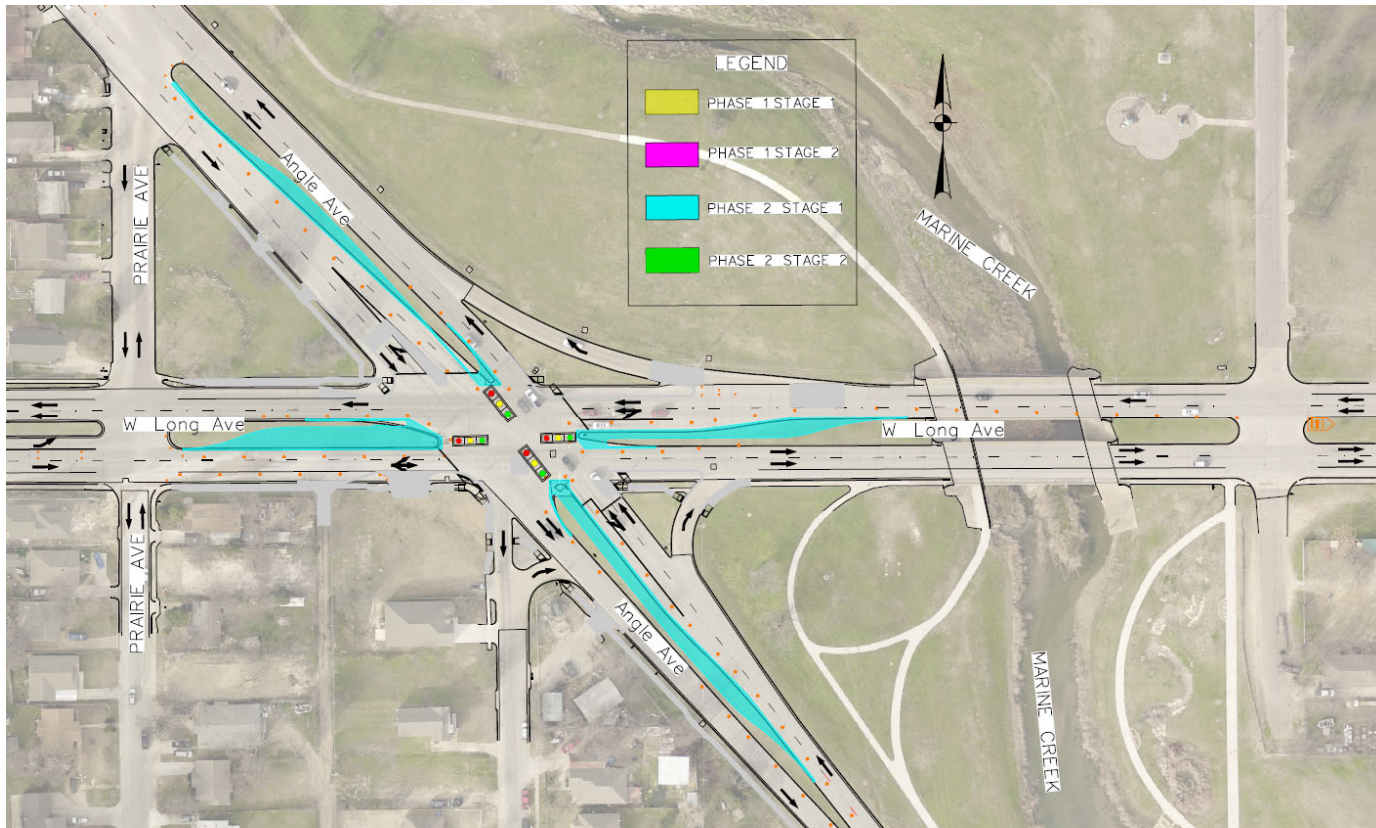
Project Phasing/Traffic Control - P1S1



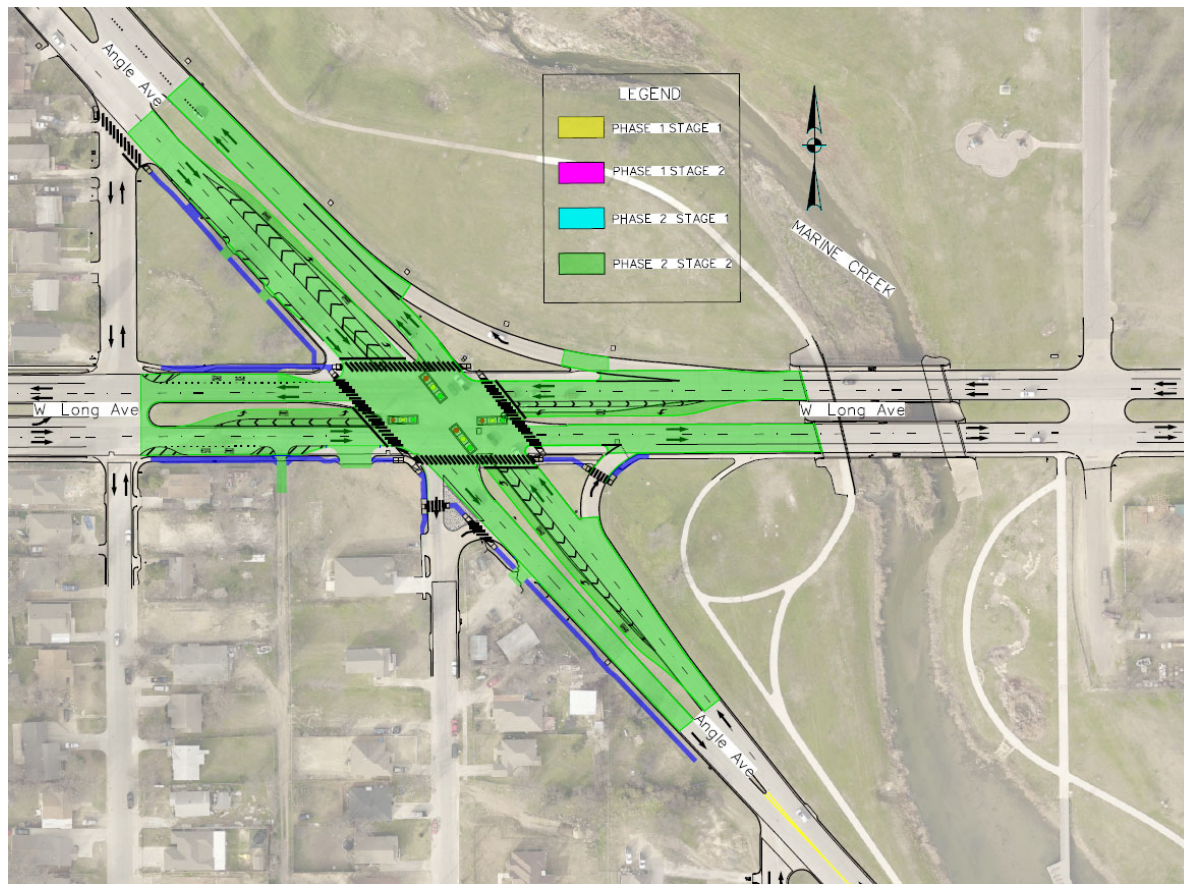
Project Phasing/Traffic Control - P1S2



Project Phasing/Traffic Control - P2S1



Project Phasing/Traffic Control - P2S2



QUESTIONS?

Contact Information

Brendan McInnes, P.E.
Project Manager
(817) 392 - 2817

Brendnan.McInnes@fortworthtexas.gov

Contact Information

James Ruiz
Project Inspector
(817) 675-1574

james.ruiz@fortworthtexas.gov

Contact Information

Craig Benckendorf
Contractor
(214) 912-2252

cbenckendorf@ReyesGroup.com

