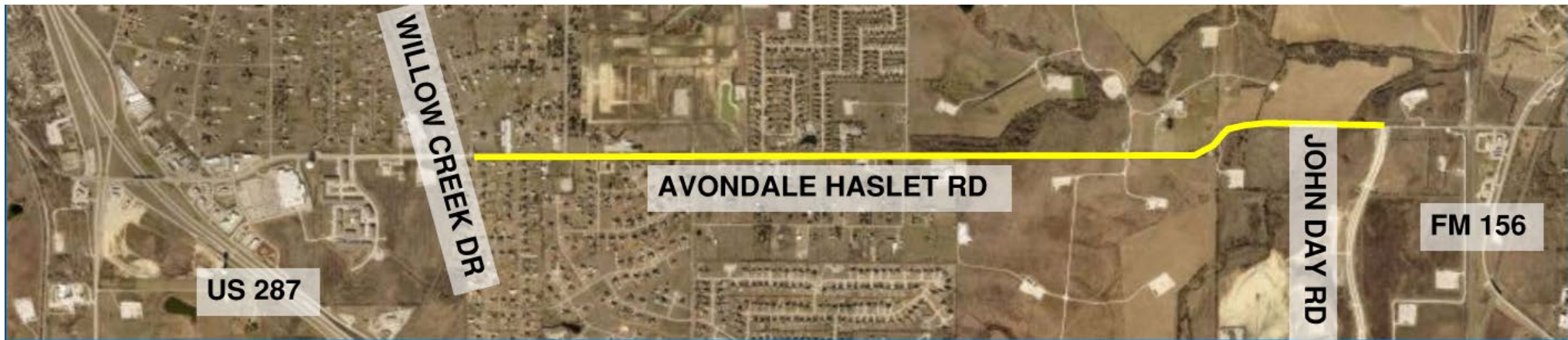


Avondale Haslet

Willow Creek Drive to Haslet City Limits

Mitch Aiton, P.E.
City of Fort Worth - TPW



Project Funding

- City of Fort Worth 2018 Bond - \$12,080,000
- City of Fort Worth 2022 Bond - \$17,020,000
- Tarrant County 2021 Bond - \$19,300,000

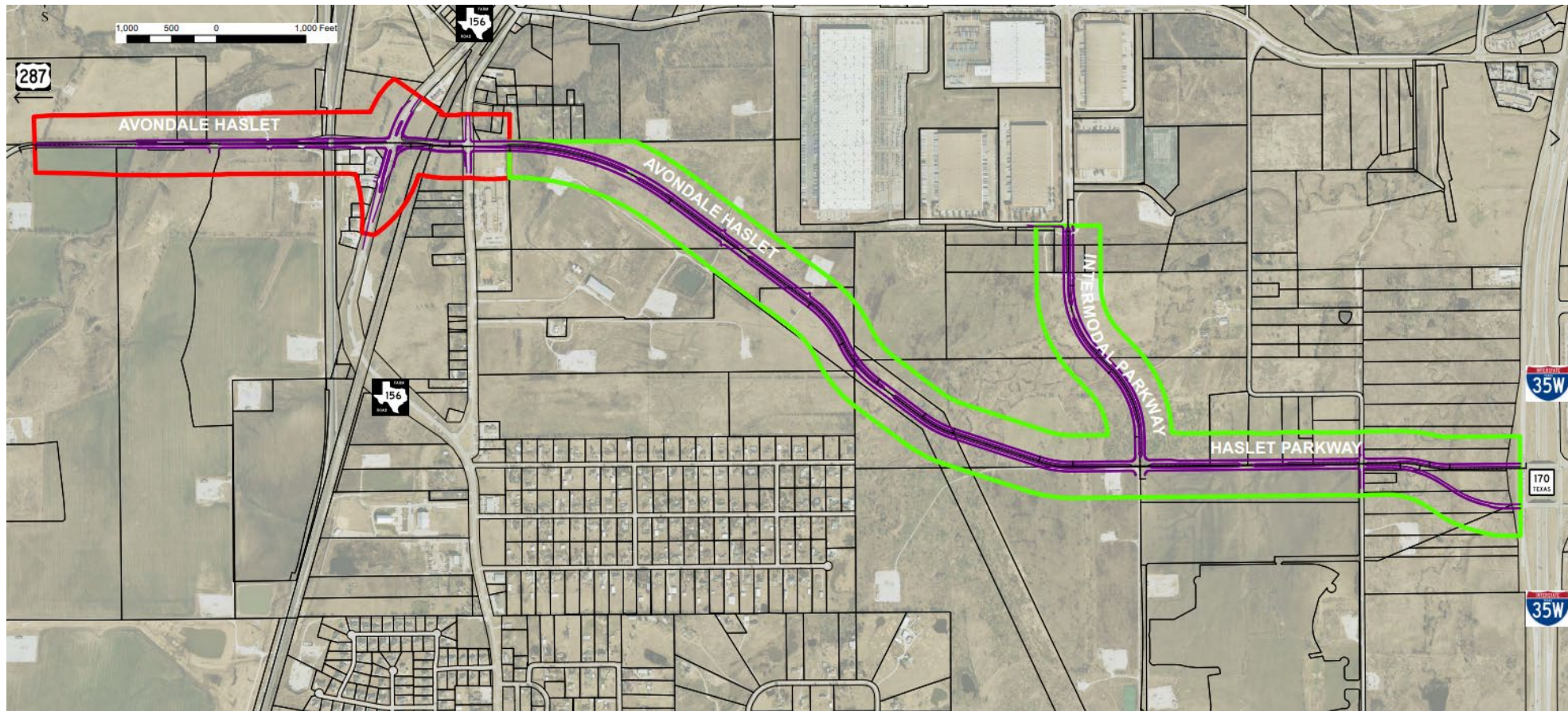
Project Schedule

- Design
 - 90%
- Row of Way Acquisition / Franchise Utility Relocation
 - In Progress
- Construction
 - Begin August 2024 (Estimated 30 months)

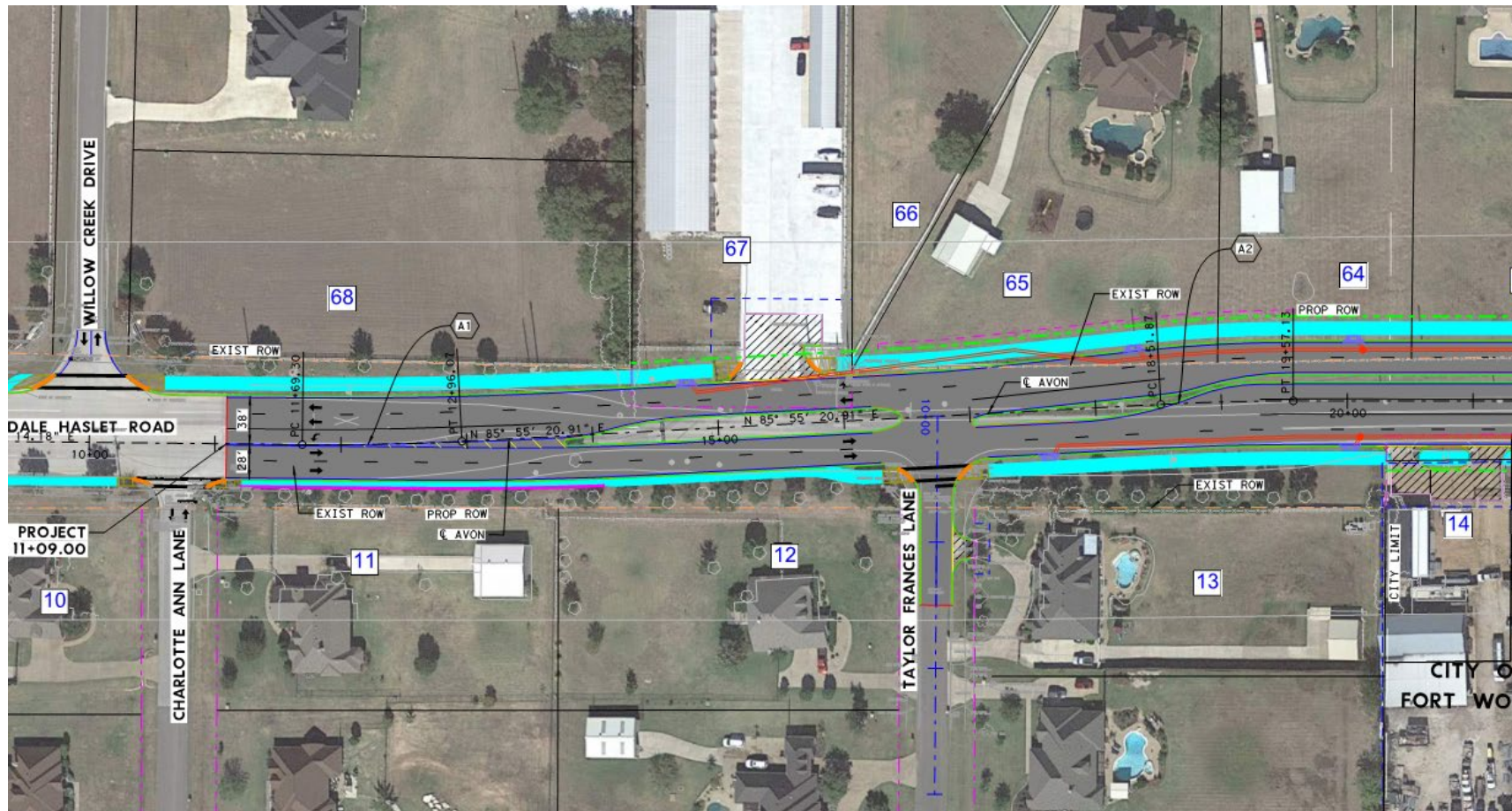
Project Improvements

- 4 Lane Concrete Road with Divided Median
- 10' Shared Use Path Sidewalks
- Improved Drainage Collection
- Illumination & Landscape Improvements
- Turn lanes and Traffic Signals at Sendera Ranch, Willow Springs North and Willow Springs South Intersections

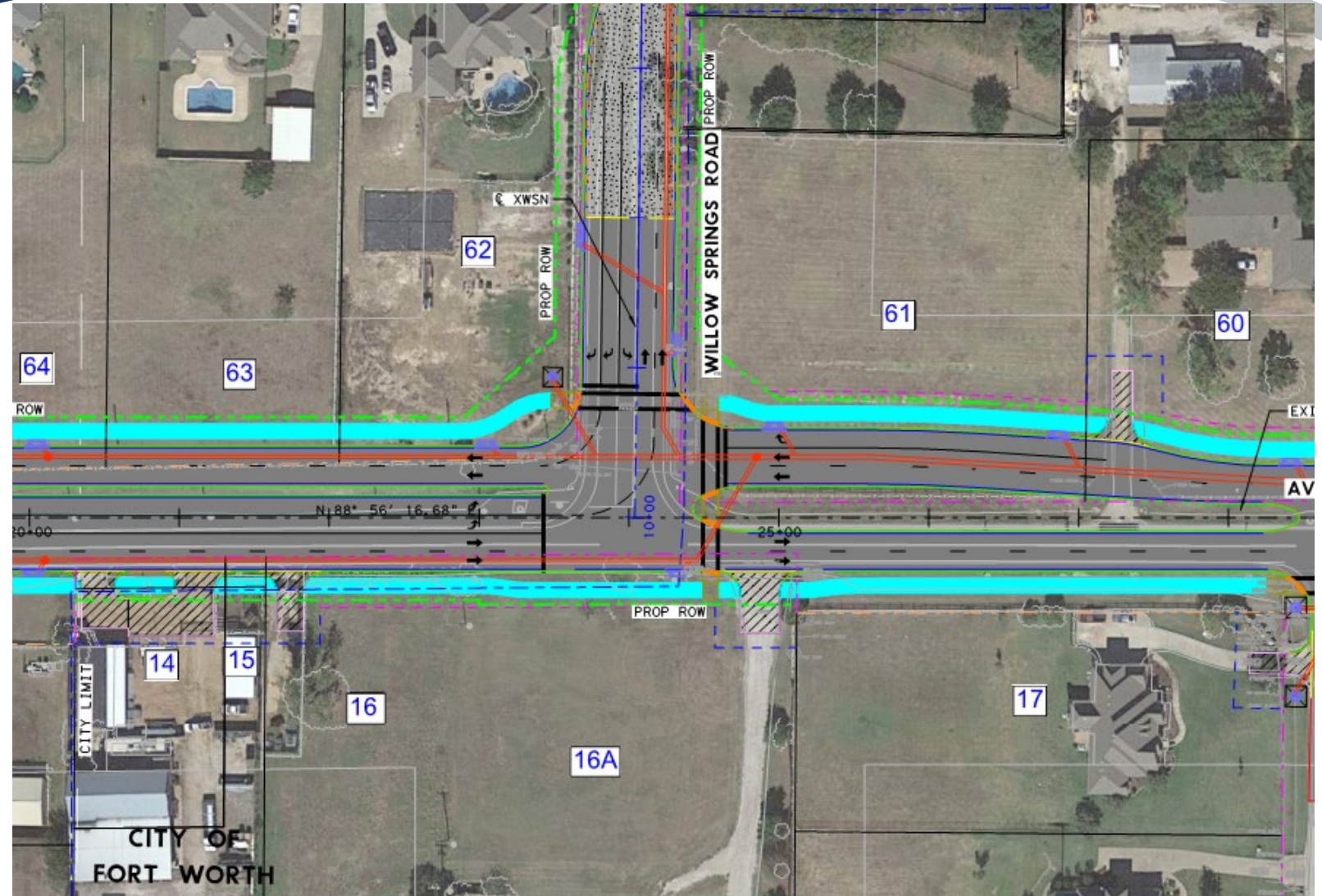
Haslet Parkway Improvements



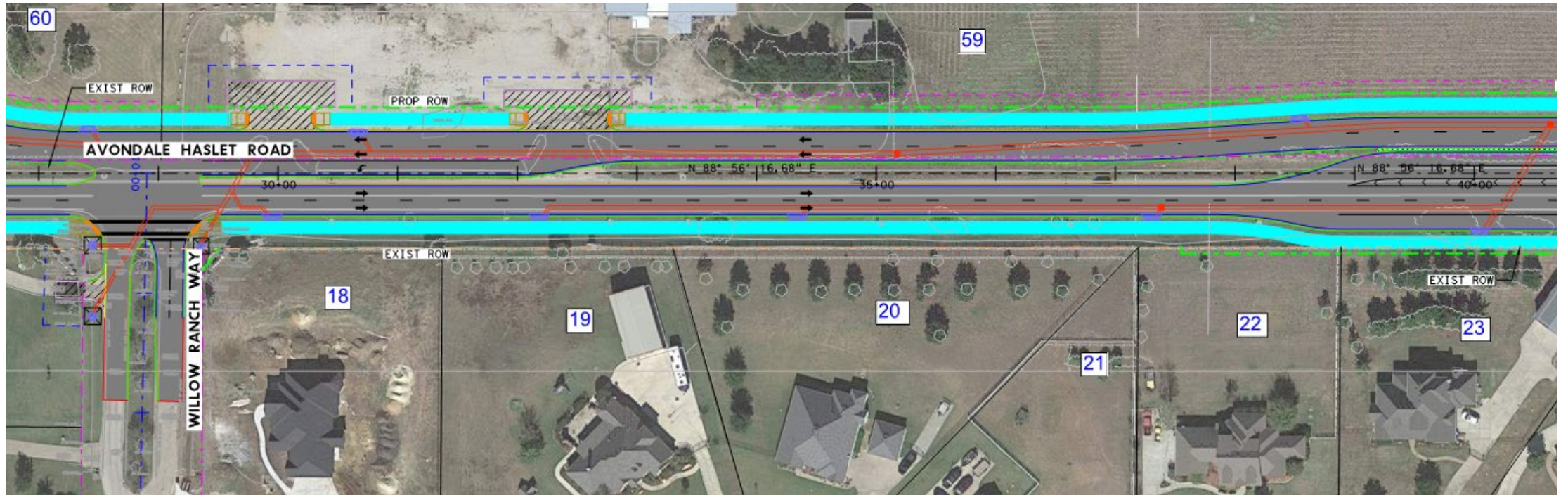
Avondale Haslet Improvements



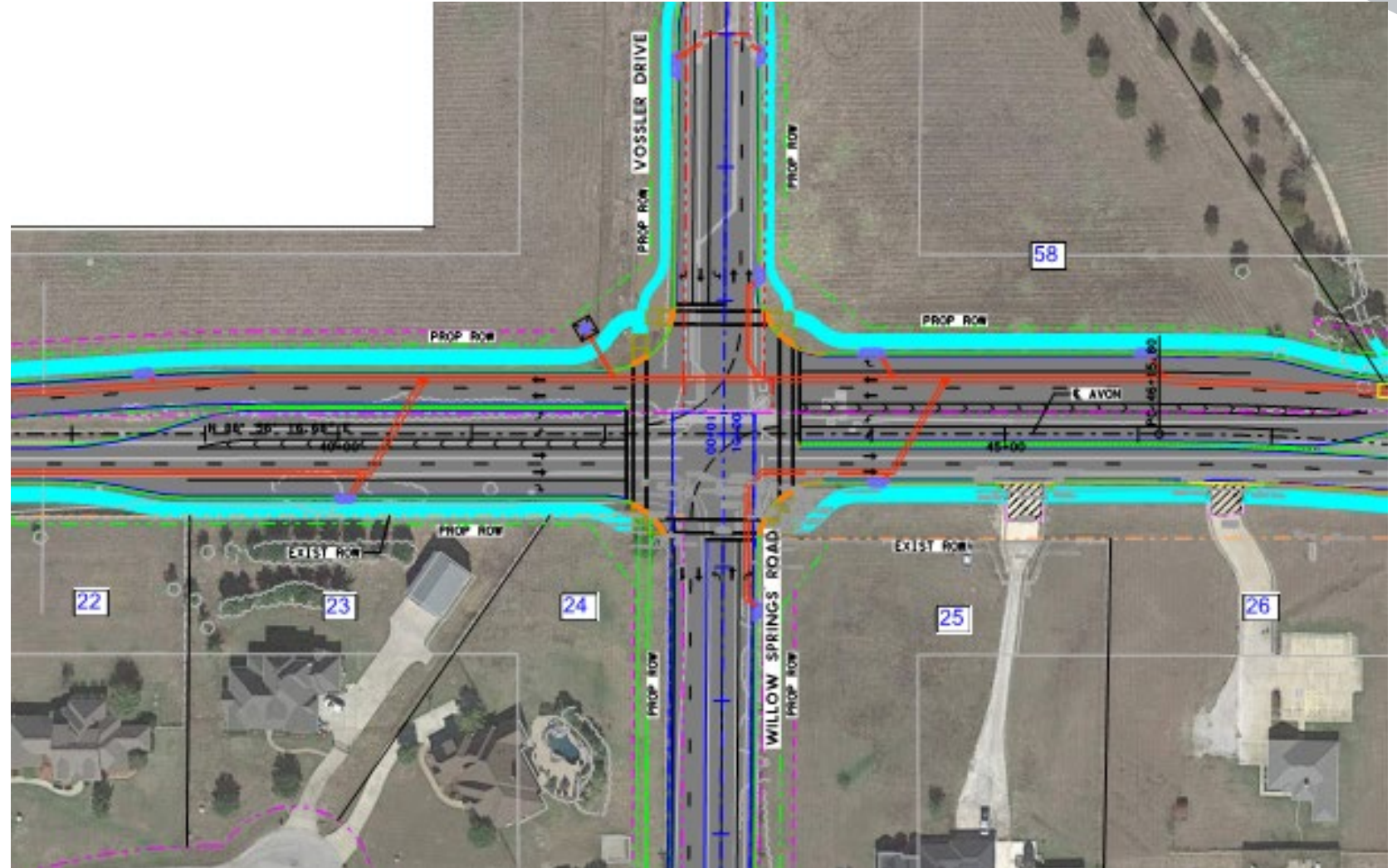
Avondale Haslet Improvements



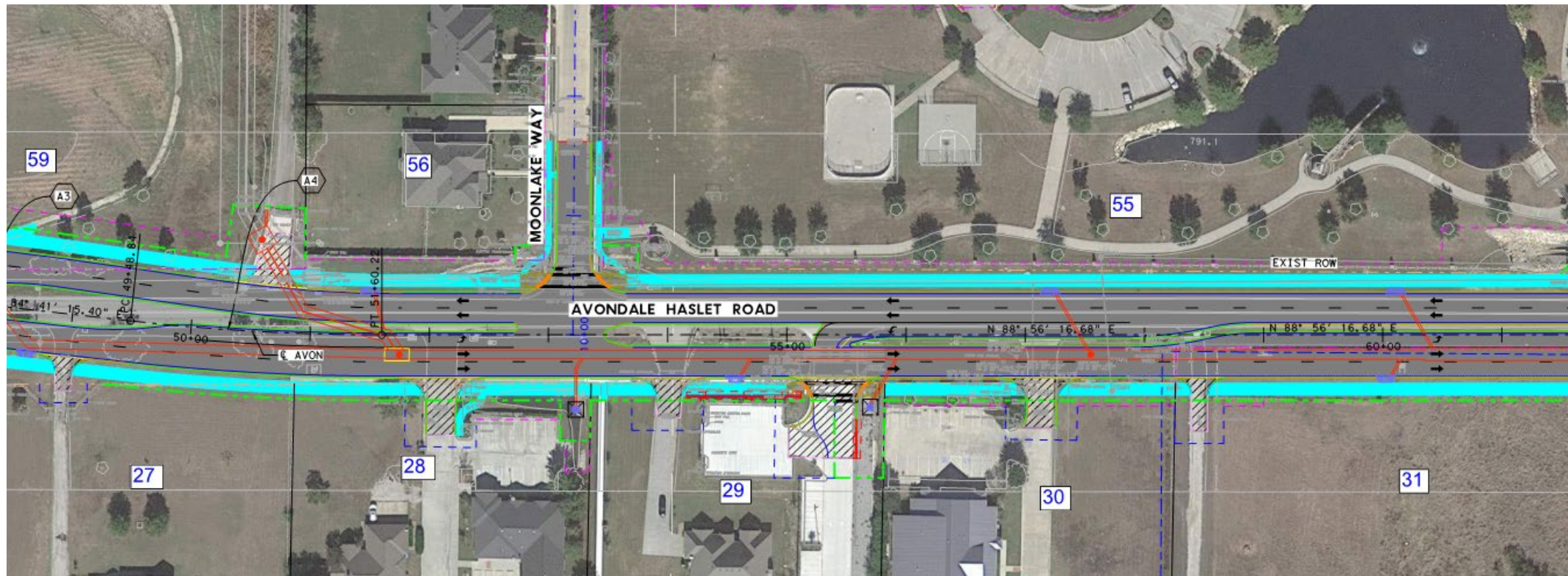
Avondale Haslet Improvements



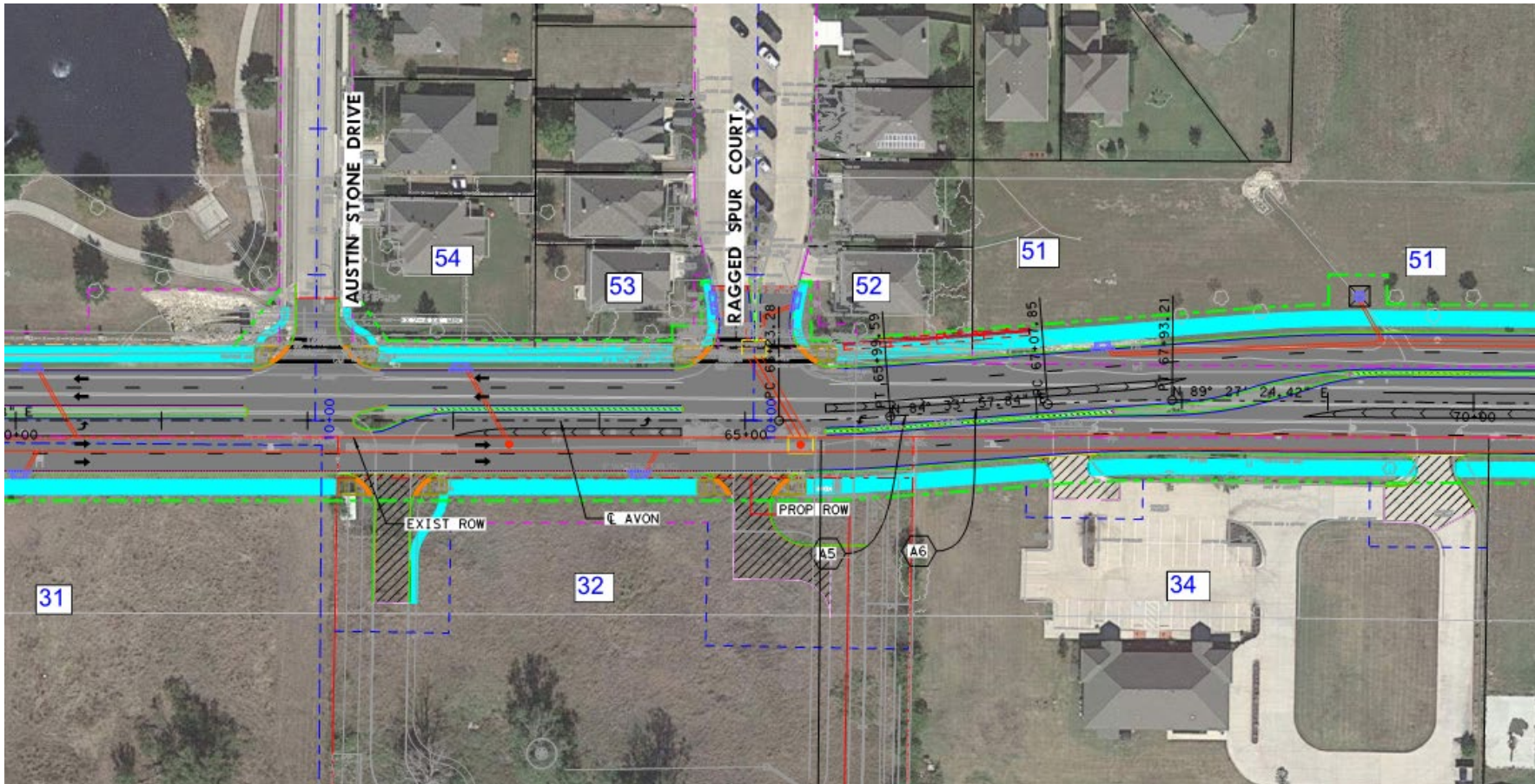
Avondale Haslet Improvements



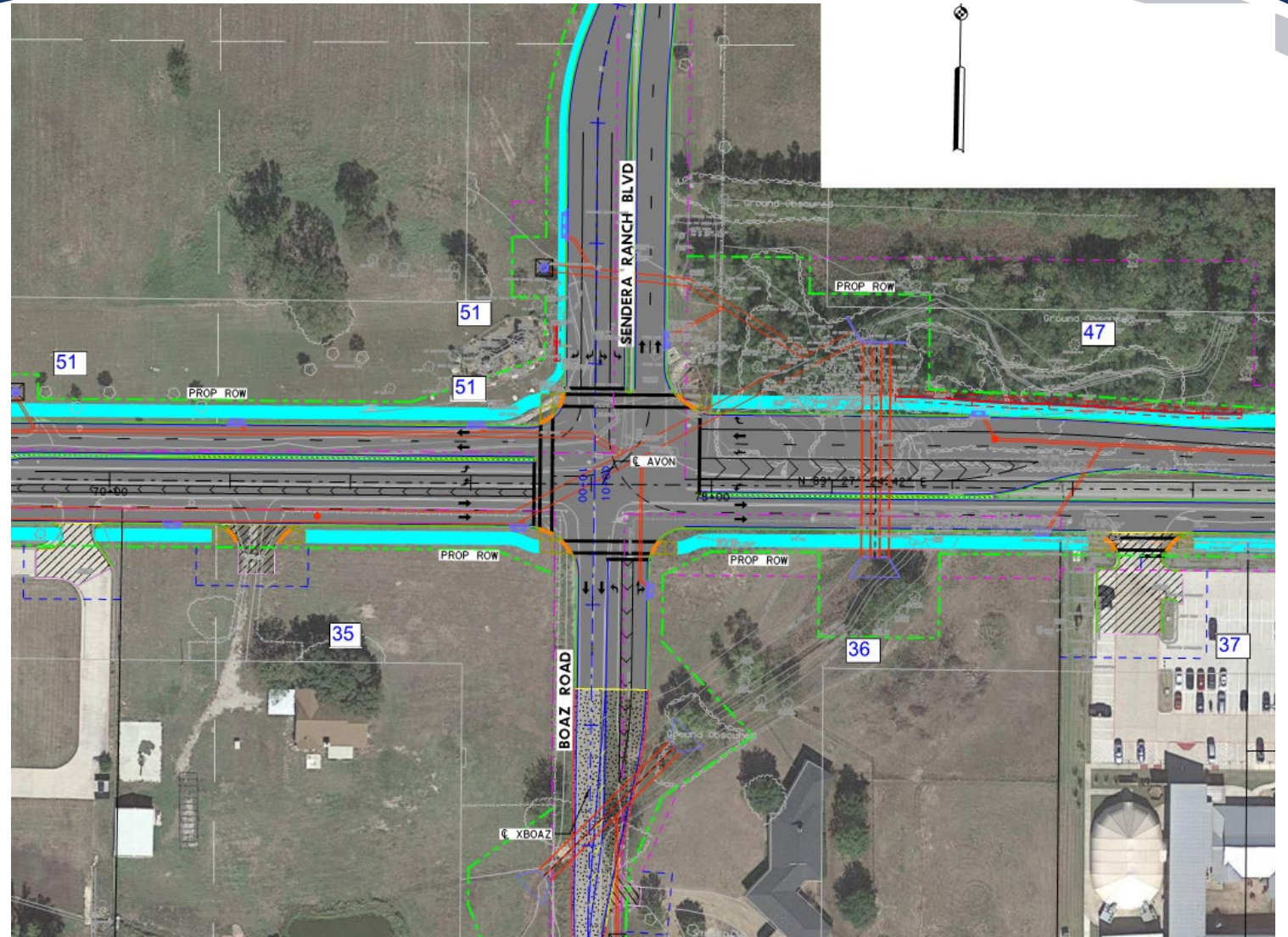
Avondale Haslet Improvements



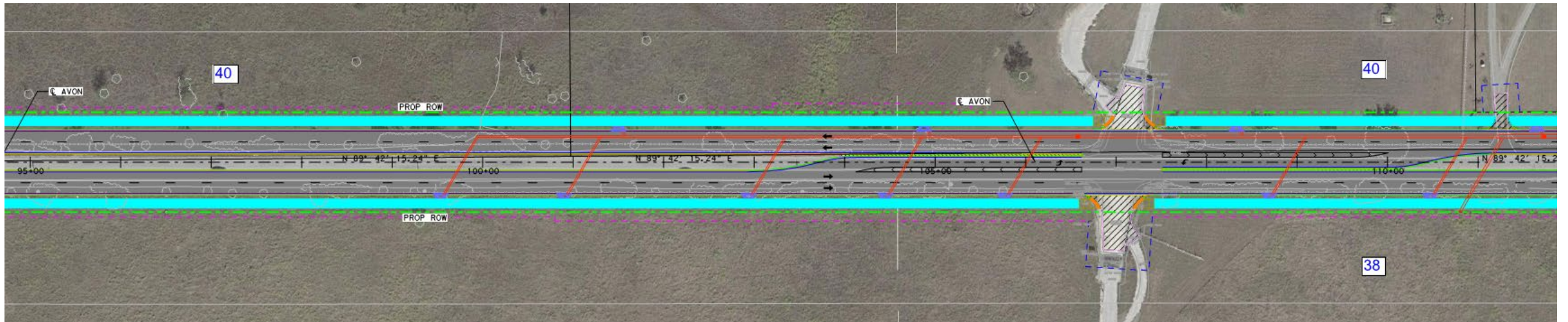
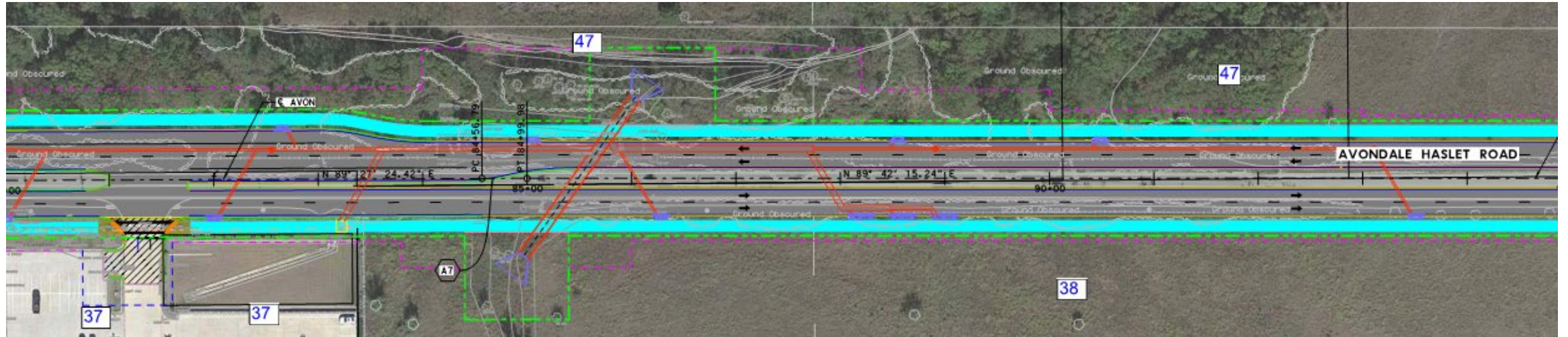
Avondale Haslet Improvements



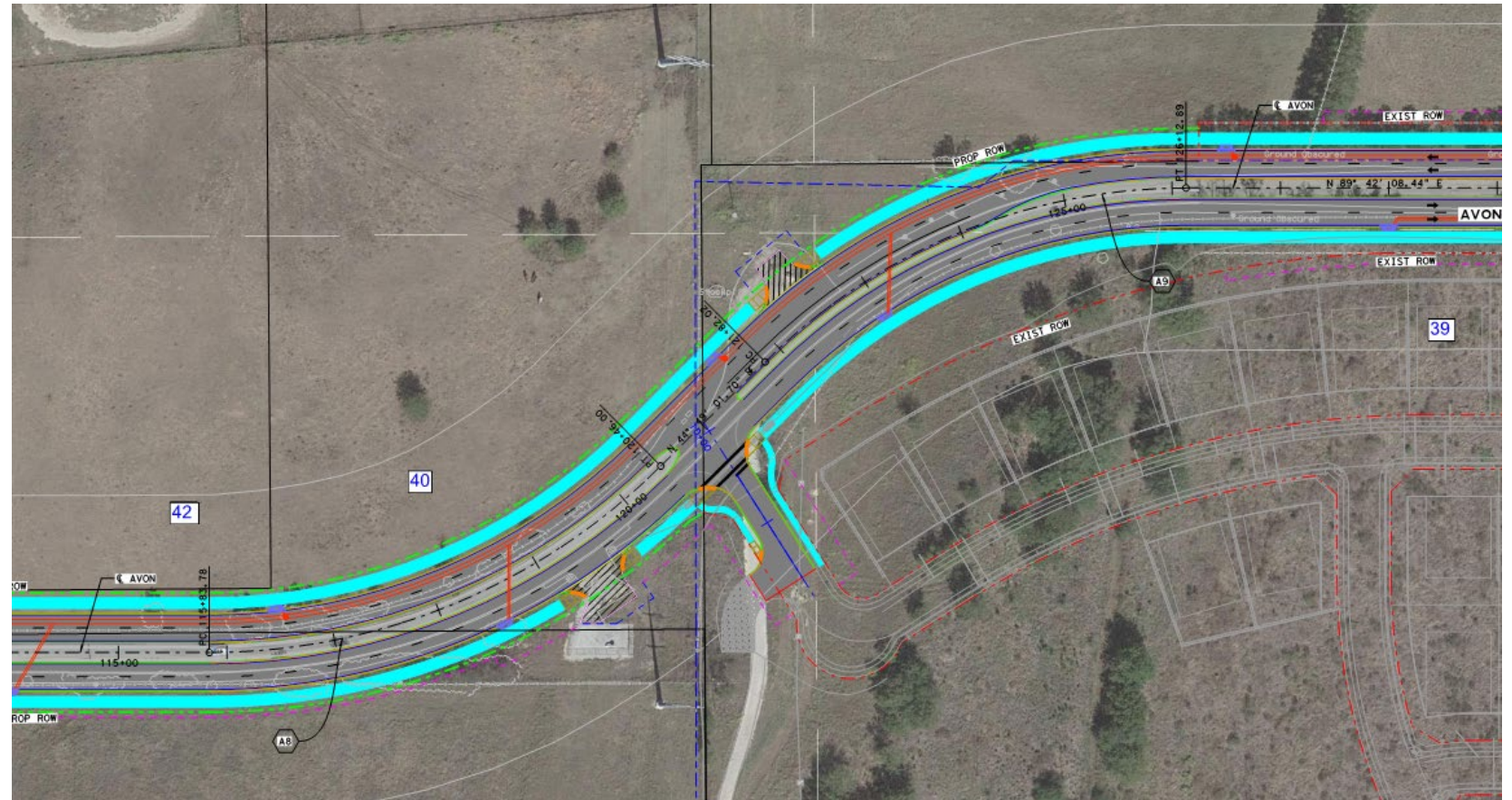
Avondale Haslet Improvements



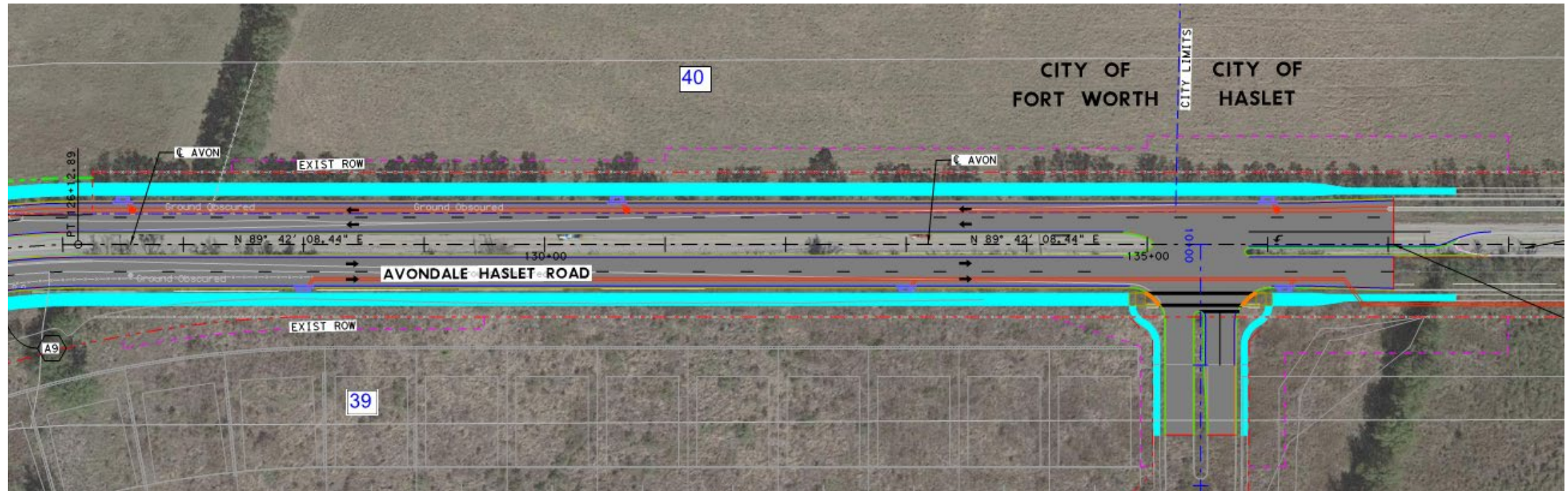
Avondale Haslet Improvements



Avondale Haslet Improvements



Avondale Haslet Improvements



Thank You

Mitch Aiton

682-715-9424

Mitchell.Aiton@fortworthtexas.gov

