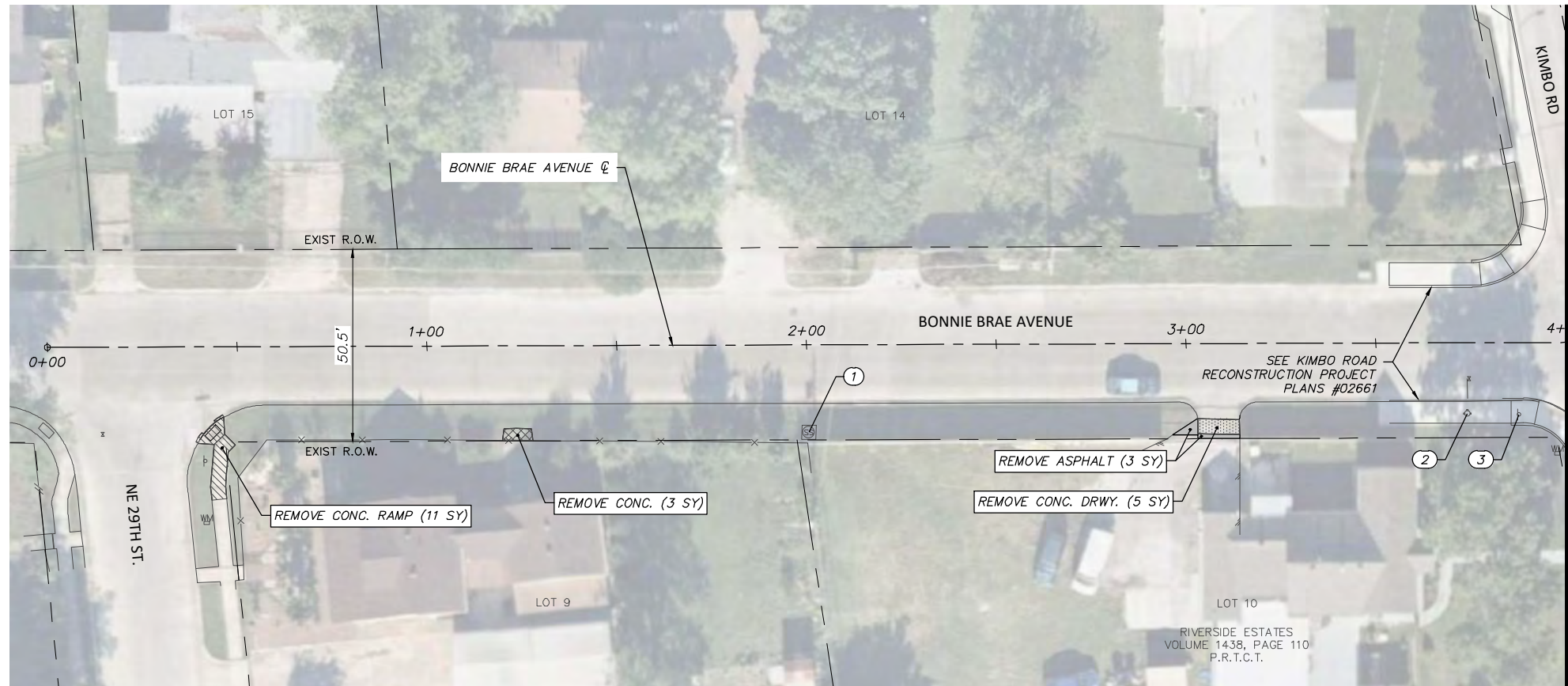


FULL PATH: G:\Production\500\002600\2684\002\Civil\Drawings\Plot Sheets\RMVL-PLAN-BB\BONNIE BRAE AVE

FILENAME: RMVL-PL-BB.dwg
 PLOTTED BY: LEE MONASTESSE
 PLOTTED WITH: _DWG TO PDF.PC3



BONNIE BRAE AVENUE

NOTE:

RETURN ALL REMOVED SIGNS TO TPW FIELD OPERATIONS SUPERVISOR SIDNEY RUTTER (SIDNEY.RUTTER@FORTWORTHTEXAS.GOV) AT 5001 JAMES AVE, FORT WORTH, TX.

ITEMS NOT CALLED OUT FOR REMOVAL SHALL BE CLEARED & REMOVED AS REQUIRED AND DIRECTED BY THE ENGINEER. COST TO BE INCLUDED IN PRICE BID FOR SITE CLEARING. EXISTING SITE CONDITIONS MAY VARY FROM THOSE SHOWN ON THESE PLANS.

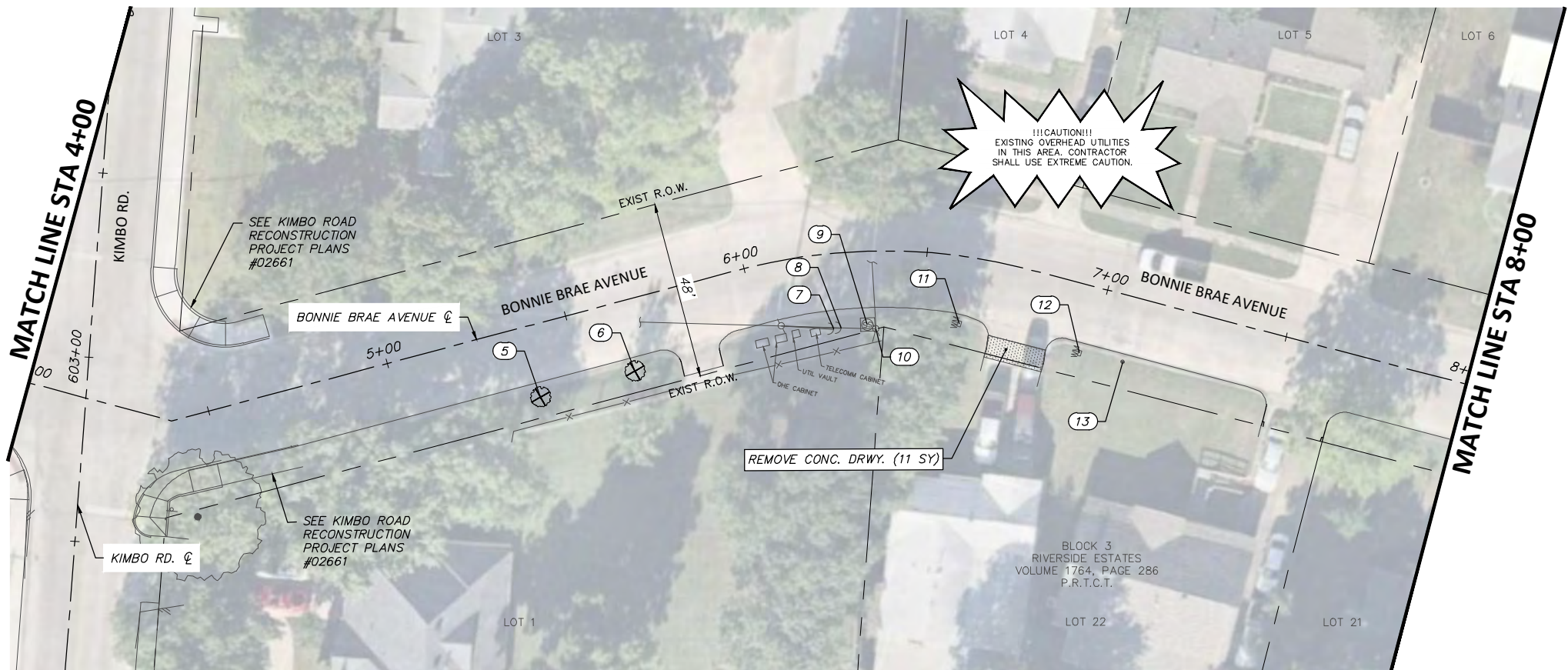
CONTACT TARIK MCINTYRE (TPW FIELD OPERATIONS SUPERVISOR), 817-392-8101 FOR DROP OFF INFORMATION.

REMOVAL LEGEND

- TREES TO BE REMOVED
- REMOVAL ITEMS
- ABANDONEMENT ITEMS
- ASPHALT REMOVAL
- GRAVEL REMOVAL
- CONCRETE REMOVAL
- SIDEWALK/ RAMP REMOVAL
- CONCRETE DRIVE REMOVAL

EXISTING BONNIE BRAE OBSTRUCTION CONFLICTS

NO.	STATION, OFFSET	DESCRIPTION	NOTE
1	2+00.57, 23.01 RT	SSMH	REPLACE APRON
2	3+74.10, 18.62 RT	FIRE HYDRANT	SEE KIMBO ROAD RECONSTRUCTION CITY PROJECT PLANS #02661
3	3+87.68, 18.91 RT	SIGN	SEE KIMBO ROAD RECONSTRUCTION CITY PROJECT PLANS #02661
5	5+37.80, 19.44 RT	TREE	REMOVE (2" CALIPER)
6	5+64.30, 19.25 RT	TREE	REMOVE (2" CALIPER)
7	6+22.55, 20.53 RT	GUY WIRE	RELOCATE GUY WIRE (BY OTHER)
8	6+24.86, 20.50 RT	GUY WIRE	RELOCATE GUY WIRE (BY OTHER)
9	6+33.13, 19.98 RT	SSMH	ADJUST TO FINISH GRADE (REPLACE LID)
10	6+35.68, 21.20 RT	OHE POLE	RELOCATE UTILITY POLE (BY OTHER)
11	6+61.53, 18.28 RT	WATER METER	PROTECT (ADJUST TO GRADE)
12	6+97.01, 18.41 RT	WATER METER	PROTECT (ADJUST TO GRADE)
13	7+08.94, 17.73 RT	S.S. CLEANOUT	PROTECT



BONNIE BRAE AVENUE

NOTE:

RETURN ALL REMOVED SIGNS TO TPW FIELD OPERATIONS SUPERVISOR SIDNEY RUTTER (SIDNEY.RUTTER@FORTWORTHTEXAS.GOV) AT 5001 JAMES AVE, FORT WORTH, TX.

ITEMS NOT CALLED OUT FOR REMOVAL SHALL BE CLEARED & REMOVED AS REQUIRED AND DIRECTED BY THE ENGINEER. COST TO BE INCLUDED IN PRICE BID FOR SITE CLEARING. EXISTING SITE CONDITIONS MAY VARY FROM THOSE SHOWN ON THESE PLANS.

CONTACT TARIK MCINTYRE (TPW FIELD OPERATIONS SUPERVISOR), 817-392-8101 FOR DROP OFF INFORMATION.

REMOVAL LEGEND

- TREES TO BE REMOVED
- REMOVAL ITEMS
- ABANDONEMENT ITEMS
- ASPHALT REMOVAL
- GRAVEL REMOVAL
- CONCRETE REMOVAL
- SIDEWALK/ RAMP REMOVAL
- CONCRETE DRIVE REMOVAL

EXISTING BONNIE BRAE OBSTRUCTION CONFLICTS

NO.	STATION, OFFSET	DESCRIPTION	NOTE
1	2+00.57, 23.01 RT	SSMH	REPLACE APRON
2	3+74.10, 18.62 RT	FIRE HYDRANT	SEE KIMBO ROAD RECONSTRUCTION CITY PROJECT PLANS #02661
3	3+87.68, 18.91 RT	SIGN	SEE KIMBO ROAD RECONSTRUCTION CITY PROJECT PLANS #02661
5	5+37.80, 19.44 RT	TREE	REMOVE (2" CALIPER)
6	5+64.30, 19.25 RT	TREE	REMOVE (2" CALIPER)
7	6+22.55, 20.53 RT	GUY WIRE	RELOCATE GUY WIRE (BY OTHER)
8	6+24.86, 20.50 RT	GUY WIRE	RELOCATE GUY WIRE (BY OTHER)
9	6+33.13, 19.98 RT	SSMH	ADJUST TO FINISH GRADE (REPLACE LID)
10	6+35.68, 21.20 RT	OHE POLE	RELOCATE UTILITY POLE (BY OTHER)
11	6+61.53, 18.28 RT	WATER METER	PROTECT (ADJUST TO GRADE)
12	6+97.01, 18.41 RT	WATER METER	PROTECT (ADJUST TO GRADE)
13	7+08.94, 17.73 RT	S.S. CLEANOUT	PROTECT

DATE	BY	REV	REVISION

DUNAWAY 550 Bailey Avenue
 Suite 400
 Fort Worth, TX 76107
 (TX REG. F-1114) 817-335-1121

FORT WORTH

PROJ NO. 101264 FILE NO. K-2630

Texas Department of Transportation
 © 2021

2018 SAFE ROUTES TO SCHOOL IMPROVEMENTS

BONNIE BRAE AVENUE
REMOVALS AND UTILITY ADJUSTMENTS
STA. 0+00.00 TO STA. 8+00.00
BONNIE BRAE ELEMENTARY SCHOOL

FED. RD. DIV. NO.	STATE	PROJECT NO.	HIGHWAY NO.		
6	TEXAS	STP 2021(929)TP	N/A		
STATE DISTRICT	COUNTY	CONTROL NO.	SECTION NO.	JOB NO.	SHEET NO.
FTW	TARRANT	0902	90	082	38

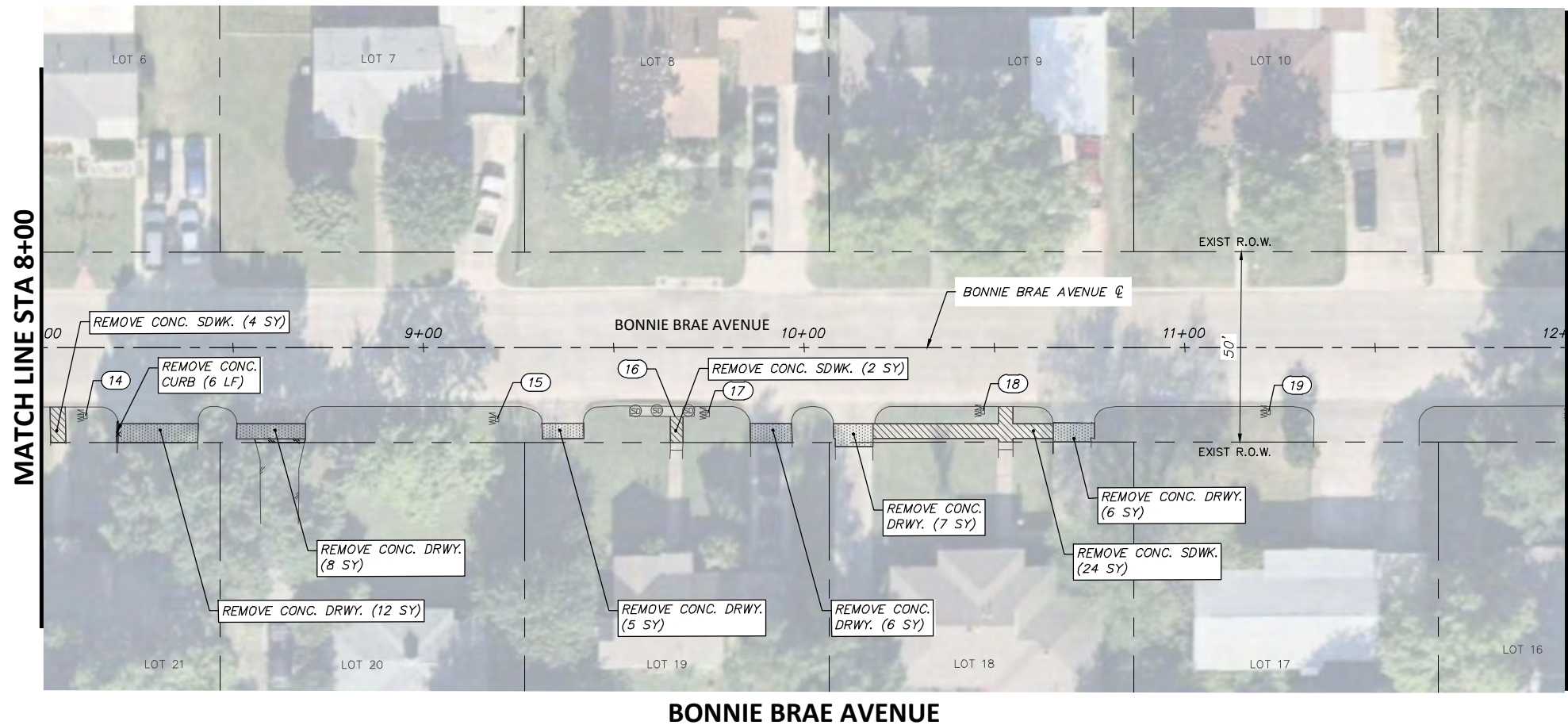
6/14/2021

JOSHUA WRIGHT
 125733
 LICENSED PROFESSIONAL ENGINEER

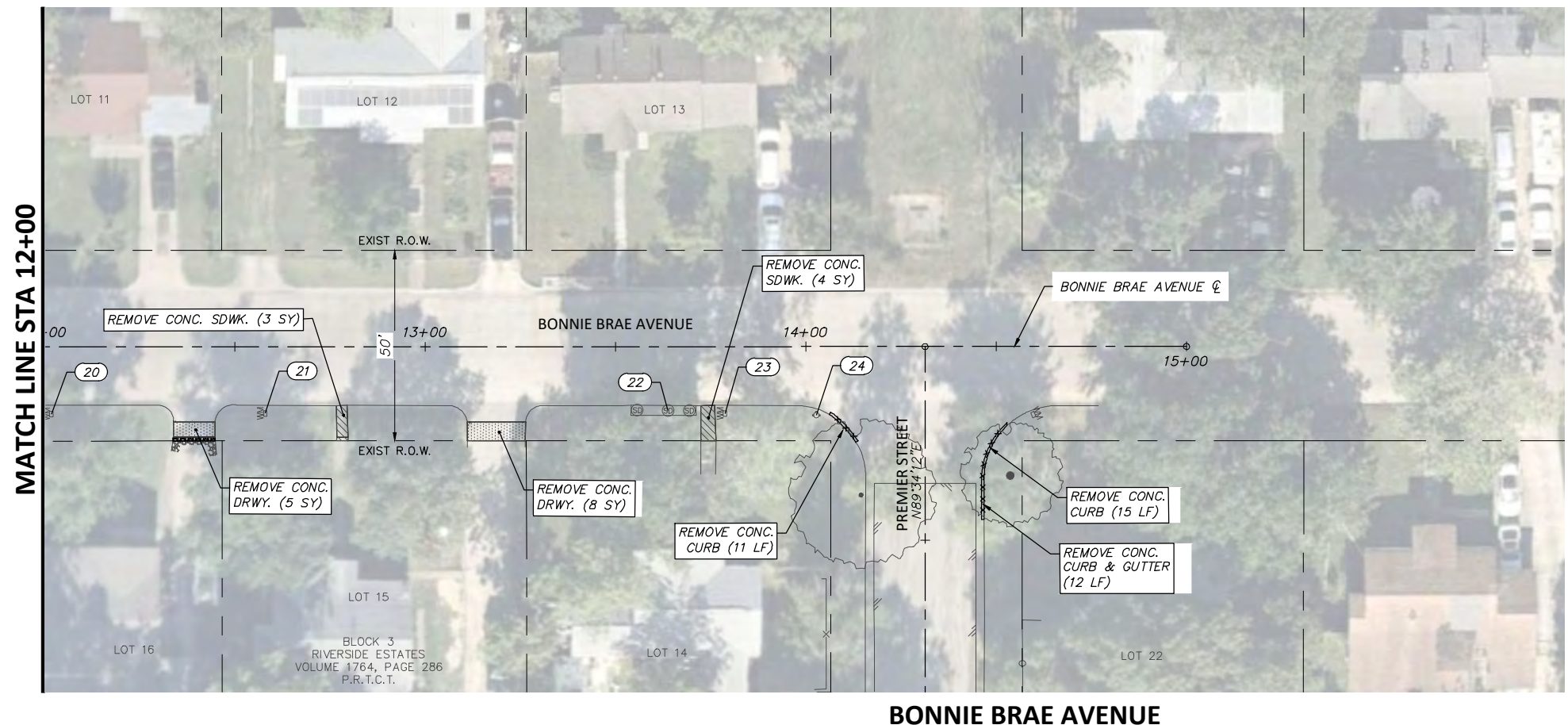
Joshua Wright

FULL PATH: G:\Production\500\002600\2684\002\Civil\Drawings\Plot Sheets\RMVL-PLAN-BB\BONNIE BRAE AVE

FILENAME: RMVL-PL-BB.dwg
 PLOTTED BY: LEE MONASTESSE
 PLOTTED WITH: _DWG TO PDF.PC3



BONNIE BRAE AVENUE



BONNIE BRAE AVENUE

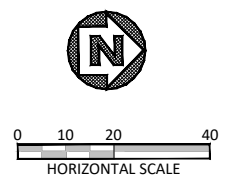
REMOVAL LEGEND

- TREES TO BE REMOVED
- REMOVAL ITEMS
- ABANDONEMENT ITEMS
- ASPHALT REMOVAL
- GRAVEL REMOVAL
- CONCRETE REMOVAL
- SIDEWALK/ RAMP REMOVAL
- CONCRETE DRIVE REMOVAL

NOTE:
 RETURN ALL REMOVED SIGNS TO TPW FIELD OPERATIONS SUPERVISOR SIDNEY RUTTER (SIDNEY.RUTTER@FORTWORTHTEXAS.GOV) AT 5001 JAMES AVE, FORT WORTH, TX.
 ITEMS NOT CALLED OUT FOR REMOVAL SHALL BE CLEARED & REMOVED AS REQUIRED AND DIRECTED BY THE ENGINEER. COST TO BE INCLUDED IN PRICE BID FOR SITE CLEARING. EXISTING SITE CONDITIONS MAY VARY FROM THOSE SHOWN ON THESE PLANS.
 CONTACT TARIK MCINTYRE (TPW FIELD OPERATIONS SUPERVISOR), 817-392-8101 FOR DROP OFF INFORMATION.

EXISTING BONNIE BRAE OBSTRUCTION CONFLICTS

NO.	STATION, OFFSET	DESCRIPTION	NOTE
14	8+11.20, 17.93 RT	WATER METER	PROTECT (ADJUST TO GRADE)
15	9+19.34, 18.76 RT	WATER METER	PROTECT (ADJUST TO GRADE)
16	9+66.18, 18.15 RT	CURB INLET	PROTECT
17	9+74.69, 17.33 RT	WATER METER	PROTECT (ADJUST TO GRADE)
18	10+46.97, 16.67 RT	WATER METER	PROTECT (ADJUST TO GRADE)
19	11+21.98, 16.83 RT	WATER METER	PROTECT (ADJUST TO GRADE)
20	12+01.74, 17.70 RT	WATER METER	PROTECT (ADJUST TO GRADE)
21	12+57.94, 17.56 RT	WATER METER	PROTECT (ADJUST TO GRADE)
22	13+63.80, 16.83 RT	CURB INLET	PROTECT
23	13+78.73, 17.58 RT	WATER METER	PROTECT (ADJUST TO GRADE)
24	14+02.75, 18.06 RT	FIRE HYDRANT	PROTECT



6/14/2021

Joshua Wright

DATE	BY	REV	REVISION

DUNAWAY 550 Bailey Avenue
 Suite 400
 Fort Worth, TX 76107
 817-335-1121
 (TX REG. F-1114)

FORT WORTH

PROJ NO. 101264 FILE NO. K-2630

Texas Department of Transportation
 © 2021

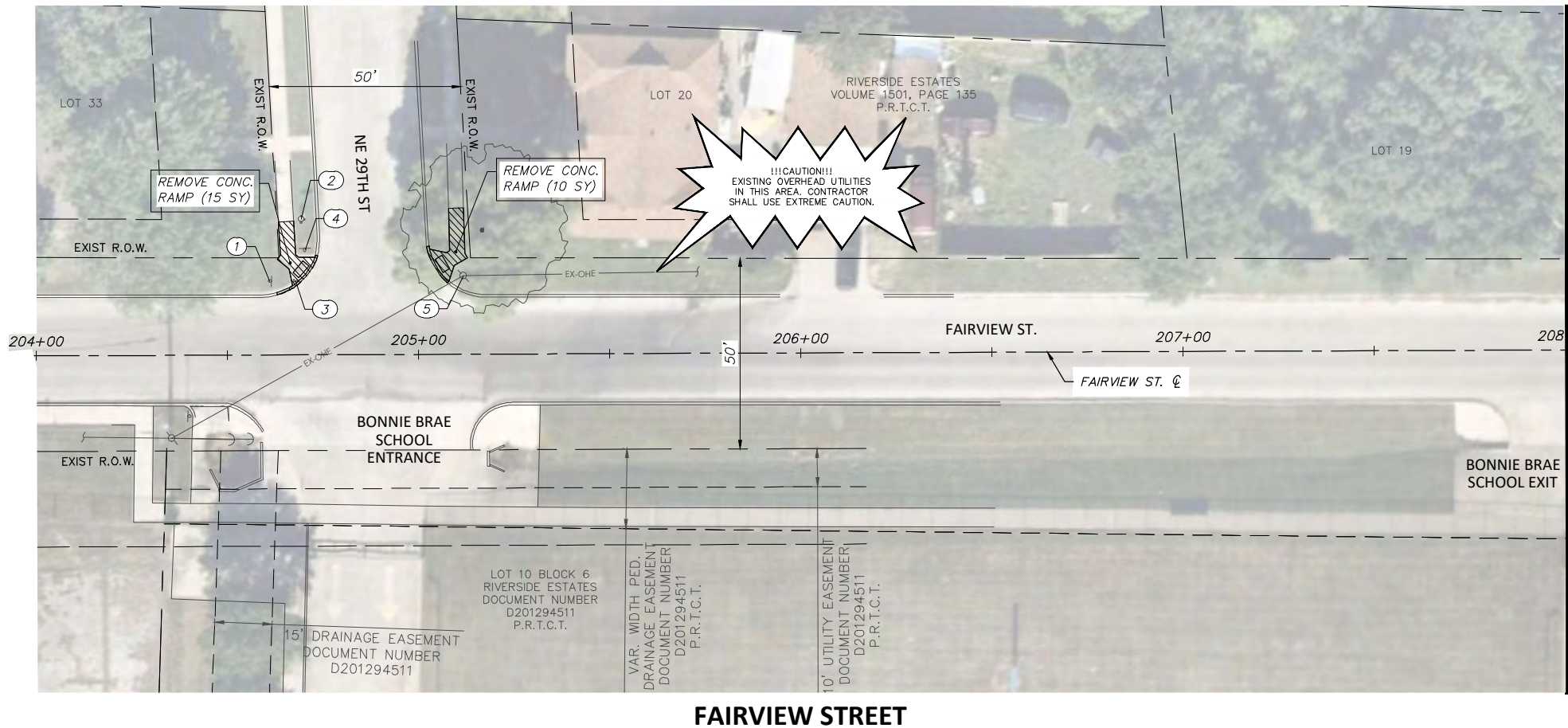
2018 SAFE ROUTES TO SCHOOL IMPROVEMENTS

BONNIE BRAE AVENUE
REMOVALS AND UTILITY ADJUSTMENTS
STA. 8+00.00 TO STA. 15+00.00
BONNIE BRAE ELEMENTARY SCHOOL

FED. RD. DIV. NO.	STATE	PROJECT NO.	HIGHWAY NO.		
6	TEXAS	STP 2021(929)TP	N/A		
STATE DISTRICT	COUNTY	CONTROL NO.	SECTION NO.	JOB NO.	SHEET NO.
FTW	TARRANT	0902	90	082	39

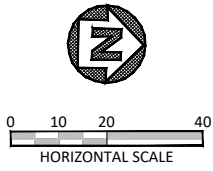
FULL PATH: G:\Production\500\002600\2684\002\Civil\Drawings\Plot Sheets\RMVL-PLAN-BB\FAIRVIEW ST

FILENAME: RMVL-PP-FV.dwg
 PLOTTED BY: LEE MONASTESSE
 PLOTTED WITH: _DWG TO PDF.PC3



FAIRVIEW STREET

MATCH LINE STA 208+00



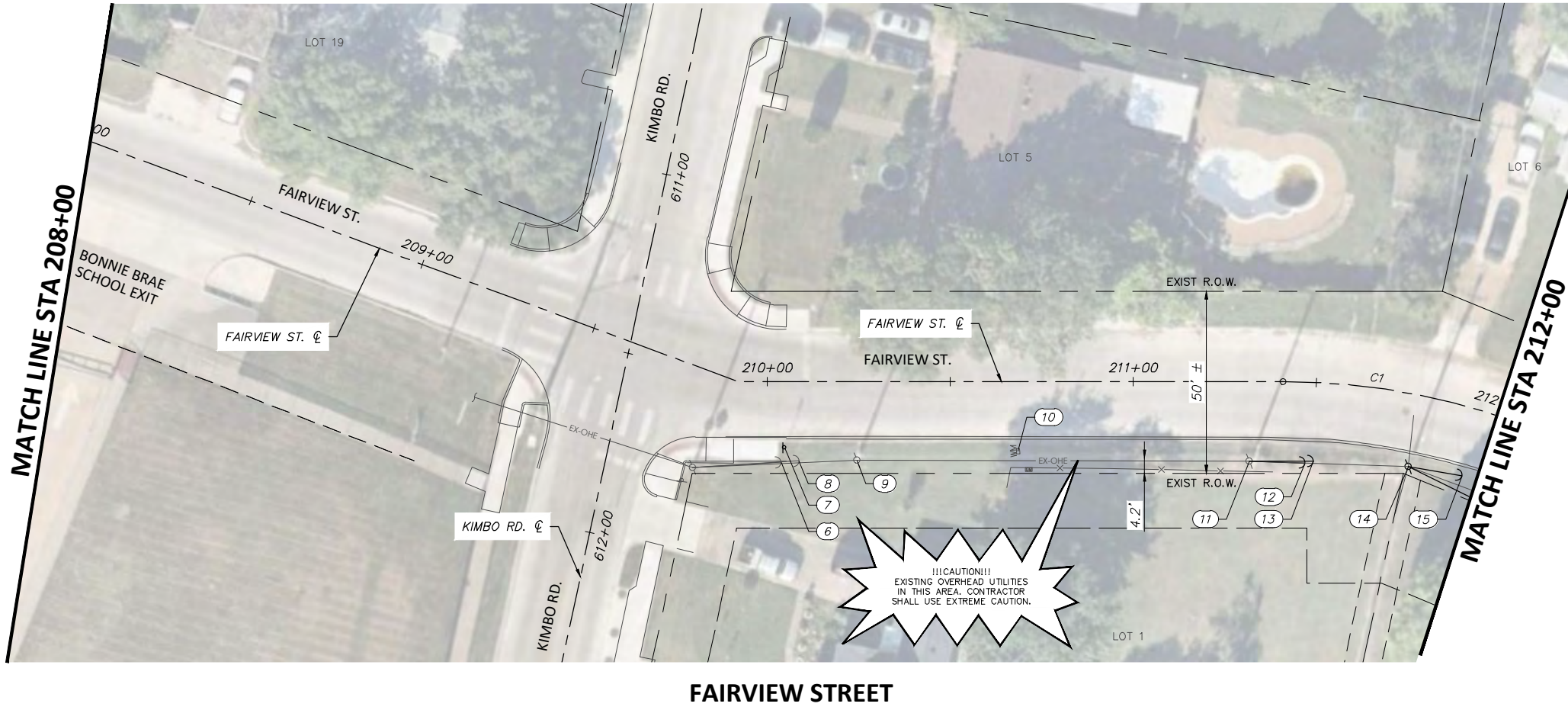
NOTE:
 RETURN ALL REMOVED SIGNS TO TPW FIELD OPERATIONS SUPERVISOR SIDNEY RUTTER (SIDNEY.RUTTER@FORTWORTHTEXAS.GOV) AT 5001 JAMES AVE, FORT WORTH, TX.
 ITEMS NOT CALLED OUT FOR REMOVAL SHALL BE CLEARED & REMOVED AS REQUIRED AND DIRECTED BY THE ENGINEER. COST TO BE INCLUDED IN PRICE BID FOR SITE CLEARING. EXISTING SITE CONDITIONS MAY VARY FROM THOSE SHOWN ON THESE PLANS.
 CONTACT TARIK MCINTYRE (TPW FIELD OPERATIONS SUPERVISOR), 817-392-8101 FOR DROP OFF INFORMATION.

REMOVAL LEGEND

- TREES TO BE REMOVED
- REMOVAL ITEMS
- ABANDONEMENT ITEMS
- ASPHALT REMOVAL
- GRAVEL REMOVAL
- CONCRETE REMOVAL
- SIDEWALK/ RAMP REMOVAL
- CONCRETE DRIVE REMOVAL

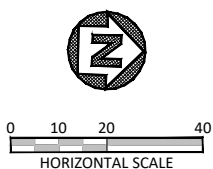
EXISTING FAIRVIEW ST. OBSTRUCTION CONFLICTS

NO.	STATION, OFFSET	DESCRIPTION	NOTE
1	204+61.24, 19.21 LT	PED. SIGN	PROTECT
2	204+69.44, 35.43 LT	FIRE HYDRANT	PROTECT
3	204+67.92, 19.32 LT	GATE VALVE	RELOCATE (OUTSIDE OF PROPOSED RAMP)
4	204+70.38, 27.42 LT	STREET SIGN	PROTECT
5	205+11.83, 20.49 LT	ELECTRIC POLE	PROTECT
6	210+03.78, 22.00 RT	GUY WIRE	PROTECT
7	210+04.69, 18.04 RT	SIGN	RELOCATE (OUTSIDE OF PROPOSED SIDEWALK)
8	210+08.61, 21.64 RT	GUY WIRE	PROTECT
9	210+24.49, 21.42 RT	ELECTRIC POLE	PROTECT
10	210+68.50, 19.00 RT	WATER METER	PROTECT (ADJUST TO GRADE)
11	211+31.71, 21.74 RT	ELECTRIC POLE	PROTECT
12	211+47.72, 22.11 RT	GUY WIRE	PROTECT
13	211+50.28, 21.54 RT	GUY WIRE	PROTECT
14	211+79.40, 19.76 RT	ELECTRIC POLE	RELOCATE (BY OTHER)
15	211+95.93, 18.67 RT	GUY WIRE	RELOCATE (BY OTHER)



FAIRVIEW STREET

MATCH LINE STA 212+00



DATE	BY	REV	REVISION

550 Bailey Avenue
Suite 400
Fort Worth, TX 76107
817-335-1121

PROJ NO. 101264 FILE NO. K-2630

Texas Department of Transportation
© 2021

2018 SAFE ROUTES TO SCHOOL IMPROVEMENTS

FAIRVIEW STREET
REMOVALS AND UTILITY ADJUSTMENTS
STA. 204+00.00 TO STA. 212+00.00
BONNIE BRAE ELEMENTARY SCHOOL

FED. RD. DIV. NO.	STATE	PROJECT NO.	HIGHWAY NO.		
6	TEXAS	STP 2021(929)TP	N/A		
STATE DISTRICT	COUNTY	CONTROL NO.	SECTION NO.	JOB NO.	SHEET NO.
FTW	TARRANT	0902	90	082	40

6/14/2021

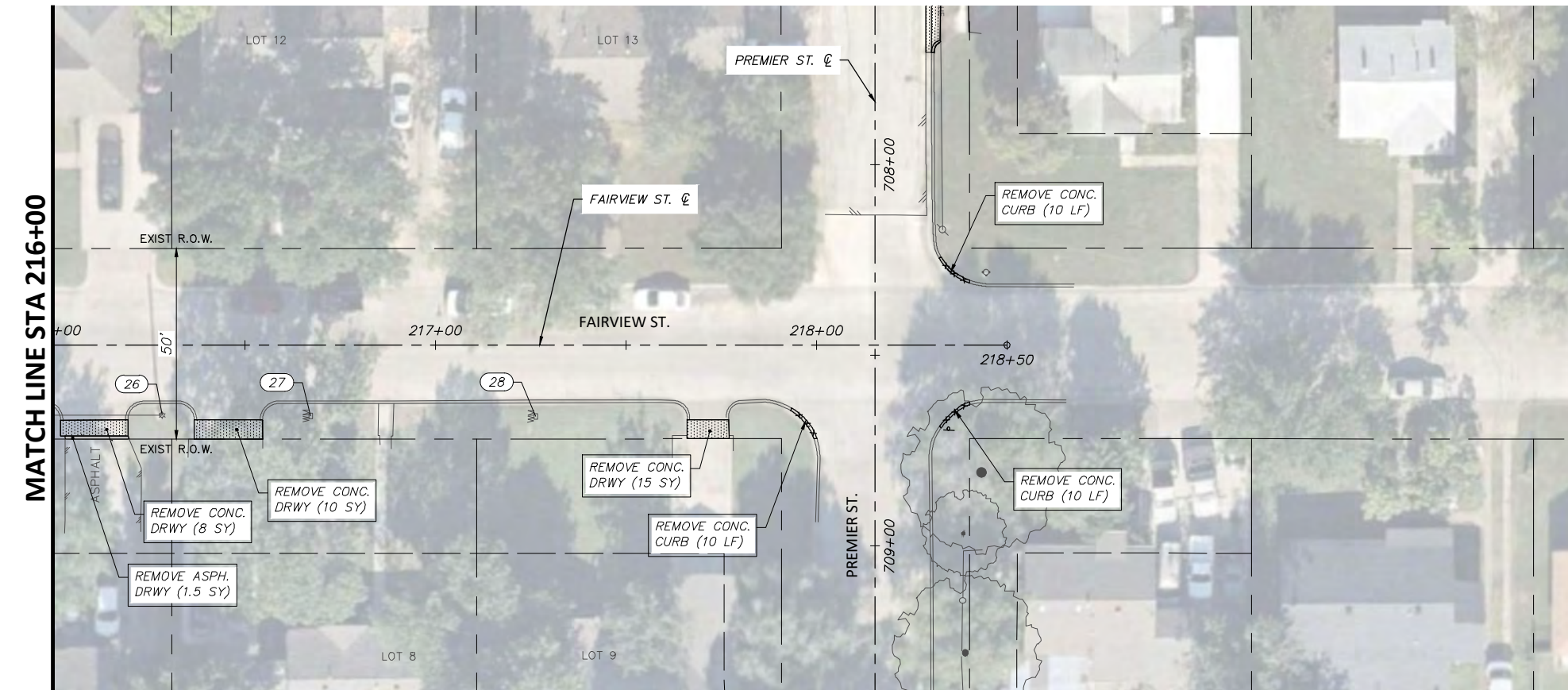
Joshua Wright

FULL PATH: G:\Production\500\002600\2684\002\Civil\Drawings\Plot Sheets\RMVL-PLAN-BB\Fairview ST

FILENAME: RMVL-PP-FV.dwg
 PLOTTED BY: LEE MONASTESSE
 PLOTTED WITH: _DWG TO PDF.PC3



FAIRVIEW STREET



FAIRVIEW STREET

REMOVAL LEGEND

- TREES TO BE REMOVED
- REMOVAL ITEMS
- ABANDONEMENT ITEMS
- ASPHALT REMOVAL
- GRAVEL REMOVAL
- CONCRETE REMOVAL
- SIDEWALK/ RAMP REMOVAL
- CONCRETE DRIVE REMOVAL

NOTE:
 RETURN ALL REMOVED SIGNS TO TPW FIELD OPERATIONS SUPERVISOR SIDNEY RUTTER (SIDNEY.RUTTER@FORTWORTHTEXAS.GOV) AT 5001 JAMES AVE, FORT WORTH, TX.
 ITEMS NOT CALLED OUT FOR REMOVAL SHALL BE CLEARED & REMOVED AS REQUIRED AND DIRECTED BY THE ENGINEER. COST TO BE INCLUDED IN PRICE BID FOR SITE CLEARING. EXISTING SITE CONDITIONS MAY VARY FROM THOSE SHOWN ON THESE PLANS.
 CONTACT TARIK MCINTYRE (TPW FIELD OPERATIONS SUPERVISOR), 817-392-8101 FOR DROP OFF INFORMATION.

EXISTING FAIRVIEW ST. OBSTRUCTION CONFLICTS			
NO.	℄ STATION, OFFSET	DESCRIPTION	NOTE
16	212+04.43, 23.97 RT	GUY WIRE	PROTECT
17	212+49.29, 18.19 RT	WATER METER	PROTECT (ADJUST TO GRADE)
18	213+10.99, 17.93 RT	ELECTRICAL POLE	RELOCATE (BY OTHER)
19	213+31.93, 18.56 RT	WATER METER	PROTECT (ADJUST TO GRADE)
20	213+90.72, 18.25 RT	LIGHT POLE	PROTECT
21	213+97.66, 21.32 RT	SPRINKLER VALVE	PROTECT
22	213+97.68, 18.68 RT	WATER METER	PROTECT (ADJUST TO GRADE)
23	214+92.70, 18.57 RT	WATER METER	PROTECT (ADJUST TO GRADE)
24	215+65.66, 23.37 RT	SHRUB	PROTECT
25	215+74.58, 18.83 RT	WATER METER	PROTECT (ADJUST TO GRADE)
26	216+28.35, 18.47 RT	LIGHT POLE	PROTECT
27	216+67.28, 18.67 RT	WATER METER	PROTECT (ADJUST TO GRADE)
28	217+26.34, 18.74 RT	WATER METER	PROTECT (ADJUST TO GRADE)

DATE BY REV REVISION

DUNAWAY 550 Bailey Avenue Suite 400 Fort Worth, TX 76107 817-335-1121
 (TX REG #1114)

FORT WORTH

PROJ NO. 101264 FILE NO. K-2630

Texas Department of Transportation © 2021

2018 SAFE ROUTES TO SCHOOL IMPROVEMENTS

FAIRVIEW STREET
REMOVALS AND UTILITY ADJUSTMENTS
STA. 212+00.00 TO STA. 218+50
BONNIE BRAE ELEMENTARY SCHOOL

6/14/2021

STATE OF TEXAS
 JOSHUA WRIGHT
 125733
 LICENSED PROFESSIONAL ENGINEER

6/14/2021

FED. RD. DIV. NO.	STATE	PROJECT NO.	HIGHWAY NO.
6	TEXAS	STP 2021(929)TP	N/A
STATE DISTRICT	COUNTY	CONTROL NO.	SECTION NO.
FTW	TARRANT	0902	90
			JOB NO.
			082
			SHEET NO.
			41