



# Historical Studies Project Coordination Request (PCR)

[Reset Form](#)

**Main CSJ:** 0902-90-084

District personnel should complete this form with all appropriate documentation attached. ENV-HIST staff review is contingent on provision of an active CSJ (or equivalent if the project is not a construction project) against which environmental work can be charged. District personnel shall ensure project description information in ECOS is complete and accurate prior to submitting the PCR to ENV-HIST. District-provided responses should reflect known data about the project and identify any limitations that hindered provision of the requested information. ENV-HIST staff will review the PCR form and attached information per established Documentation Standards. This review will result in:

- ENV-HIST environmental clearance of the project; OR
- ENV-HIST identification of additional technical studies required for clearance; OR
- ENV-HIST rejection of the PCR for failure to meet specific Documentation Standards and instructions on how to redress the rejection.

**This form specifies minimally required information needed to properly facilitate ENV-HIST's review process. Please submit all relevant documentation with this PCR at one time.**

**NOTE:** \* If this project information changes over the course of design OR if the funding source changes, then HIST requires re-coordination and a revised PCR in ECOS.

Yes If FHWA funded, does the project conform to the type listed in Appendix 4 and the Historic Resources Toolkit?  
OR

Does this historic coordination apply to the Antiquities Code as referenced in the Historic Resources Toolkit?

## Appendix 4 - Minimal Potential to Affect Historic Properties OR Antiquities Code Coordination Request

- ☒ TxDOT reviewed the following historic resources maps (Texas Historic Sites Atlas, Texas Historic Districts and Properties and Historic Bridges of Texas) and found no previously recorded properties in the Area of Potential Effects.
- No Does the project require CHC Coordination (for certain bridge projects)?
- ☒ Supporting documentation is uploaded to ECOS.

a) Aerial project location map.

ECOS File Name: HIST PCR 0902-90-084 03-20  
Attachments (see Figure 2)

b) Photographs

ECOS File Name: HIST PCR 0902-90-084 03-20  
Attachments

c) CHC consultation letter(s) and results, if appropriate

ECOS File Name: N/A

## District Personnel Certification

Yes I reviewed all submitted documents for quality assessment and control.

Elisa Garcia

District Personnel Name

July 14, 2020

Date:

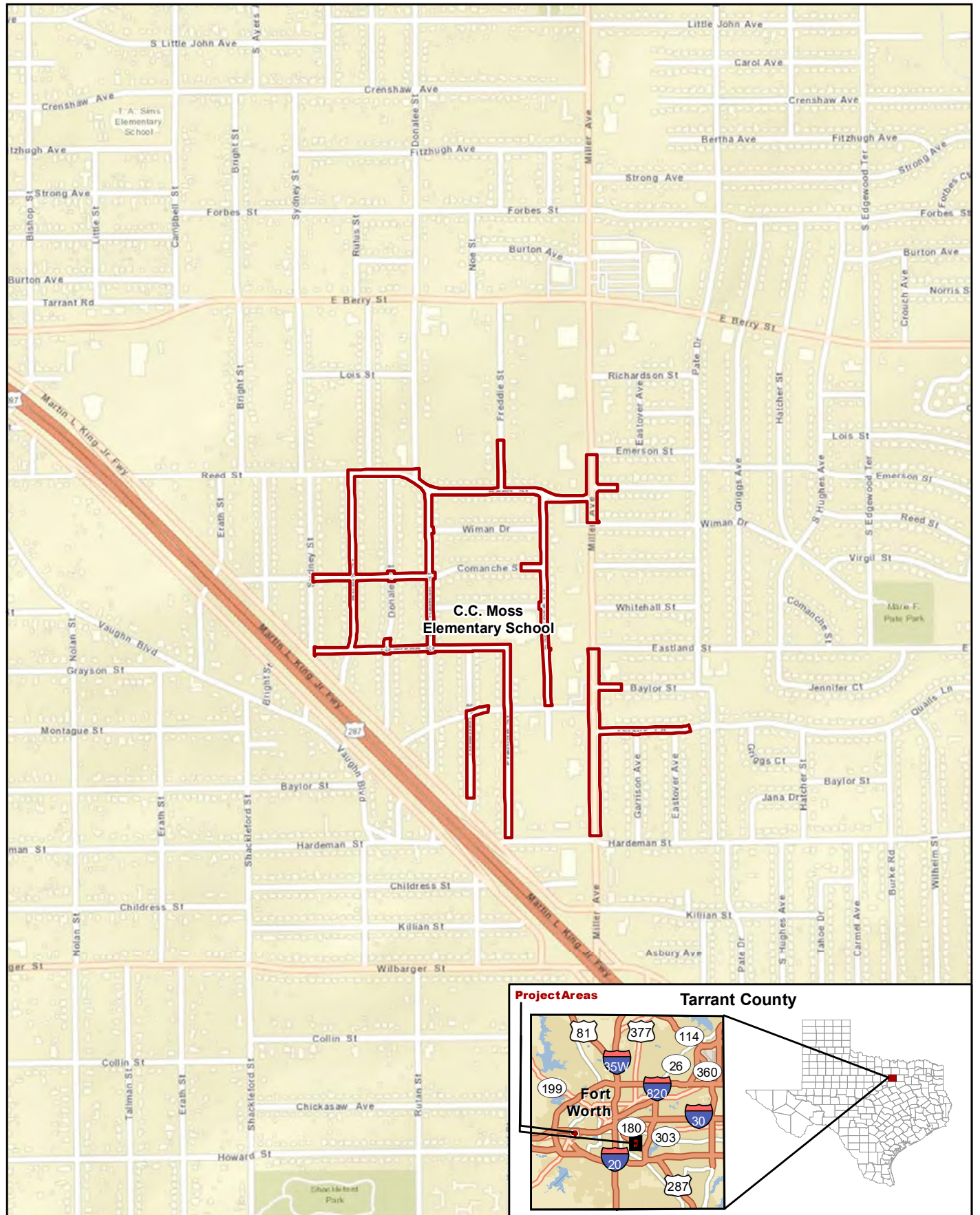


## Historical Studies Project Coordination Request (PCR)

### [Reset Form](#)

The following table shows the revision history for this document.

Revision History	
Effective Date Month, Year	Reason for and Description of Change
December 2013	Version 1 released.
June 2015	Version 2 released. The form was converted to a PDF format. Form level validations were installed to ensure that all certified forms contained the minimum required information. Various questions were modified to accommodate the improved functionality of the PDF format.
August 2015	Version 3 released. Revised the form to make it compatible with Adobe Acrobat Reader DC. No changes were made to the question sequence or form logic.
June 2019	Version 4 released. The form was updated to include a separate section for Appendix 4. Additional questions were added for form logic.



**Figure 1a - Project Location (Road Base)**

**Safe Routes to School Pedestrian Improvements**  
**C.C. Moss Elementary School and M.L. Phillips Elementary School**

Project Location



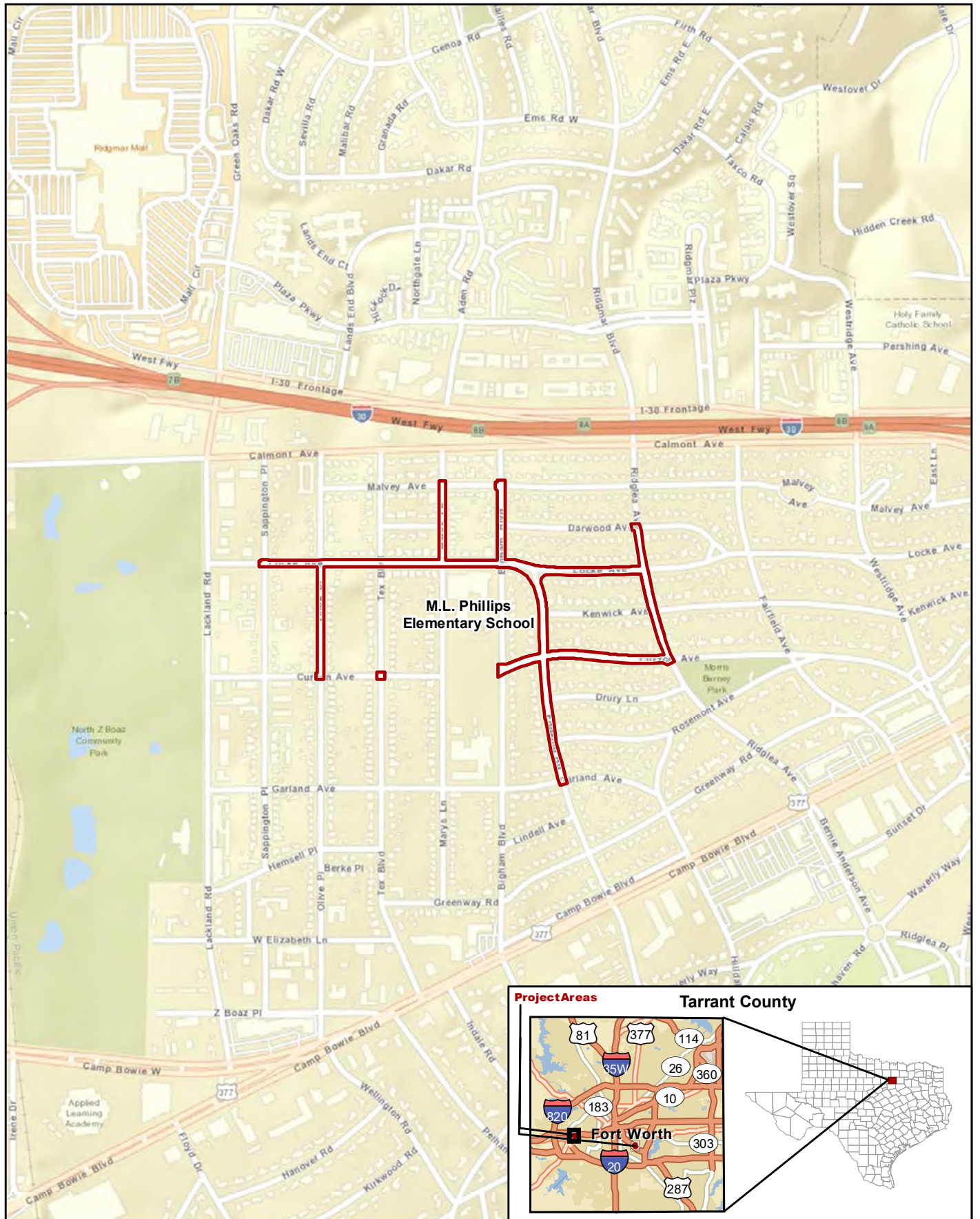
0 1,000 Feet  
 0 300 Meters

Prepared for: TxDOT  
 1 in = 1,000 feet  
 Scale: 1:12,000  
 Date: 1/8/2019

Basemap Source: ESRI (2019)

CSJ: 0902-90-084





**Figure 1b - Project Location (Road Base)**

**Safe Routes to School Pedestrian Improvements**  
**C.C. Moss Elementary School and M.L. Phillips Elementary School**

Project Location



0 1,000 Feet  
 0 300 Meters

Prepared for: TxDOT  
 1 in = 1,000 feet  
 Scale: 1:12,000  
 Date: 1/8/2019

Basemap Source: ESRI (2019)

CSJ: 0902-90-084





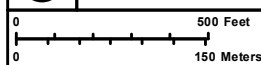
**Figure 2a - Location of APE for Historic Resources**

**Safe Routes to School Pedestrian Improvements**  
**C.C. Moss Elementary School and M.L. Phillips Elementary School**



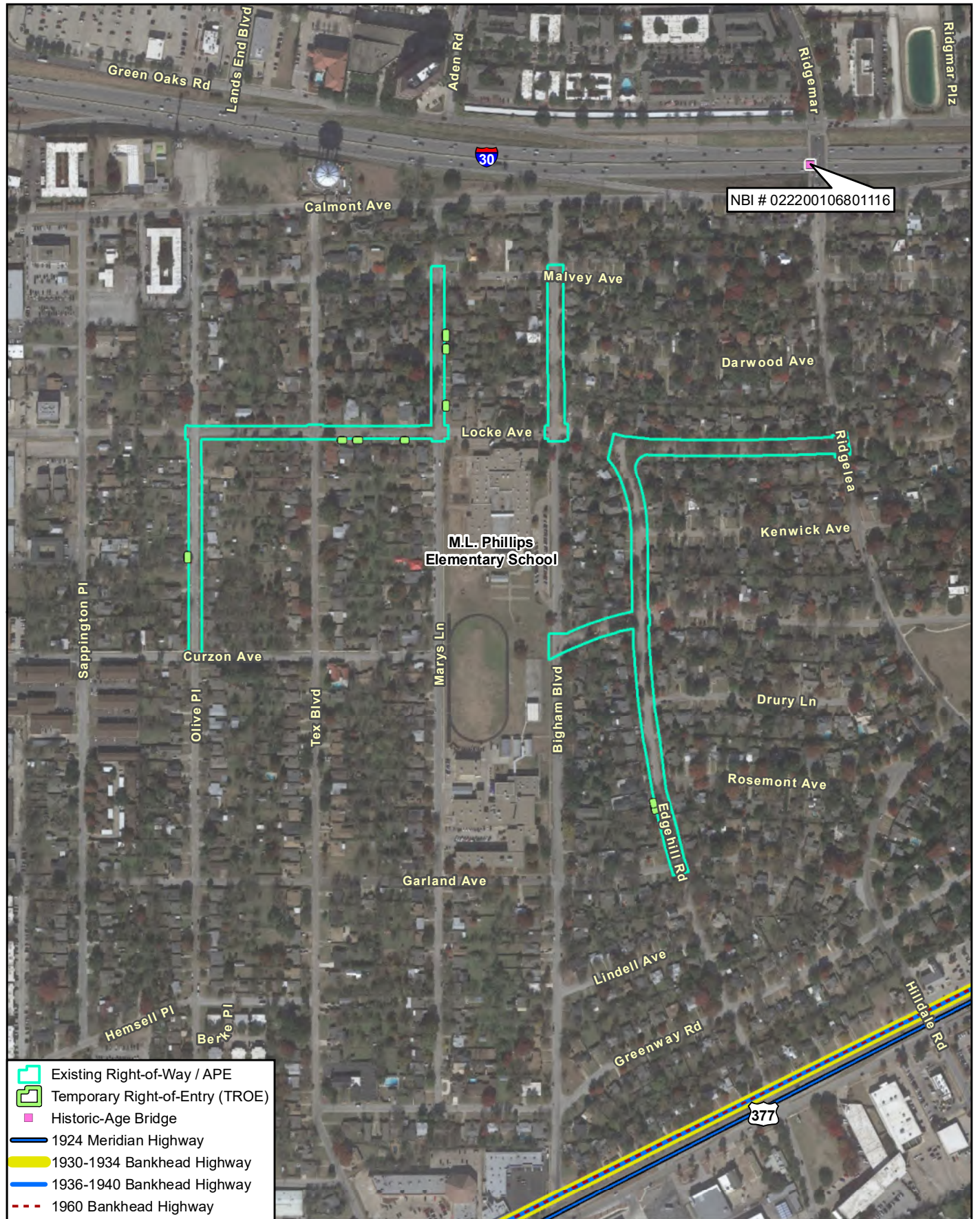
CSJ: 0902-90-084

Data Sources:  
 THC (2019), KHA (2019),  
 TxDOT (2019), FHWA (2019)  
 Aerial Source: Google (2018)



1 in = 500 feet  
 Scale: 1:6,000  
 Date: 3/20/2020





**Figure 2b - Location of APE for Historic Resources**

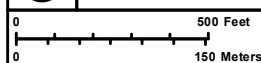
**Safe Routes to School Pedestrian Improvements**  
**C.C. Moss Elementary School and M.L. Phillips Elementary School**

G:\Projects\CityofFortWorth\SRIS\_KHAMoss\_Phillips\_Hist\_Figure 2\_PCR APE\_20200319\_TLS.mxd

Data Sources:  
 THC (2019), KHA (2019),  
 TxDOT (2019), FHWA (2019)  
 Aerial Source: Google (2018)



CSJ: 0902-90-084



1 in = 500 feet  
 Scale: 1:6,000  
 Date: 3/20/2020



C. C. MOSS ELEMENTARY SCHOOL

No NHL, NRHP, SAL, or RTHL resources within the study area. The Calvin Cemetery (TR-C027) off Castleman Street and Reed Street in the study area is not listed as a Historic Texas Cemetery. The Masonic Widows and Orphans Home Historic District is outside the study area.

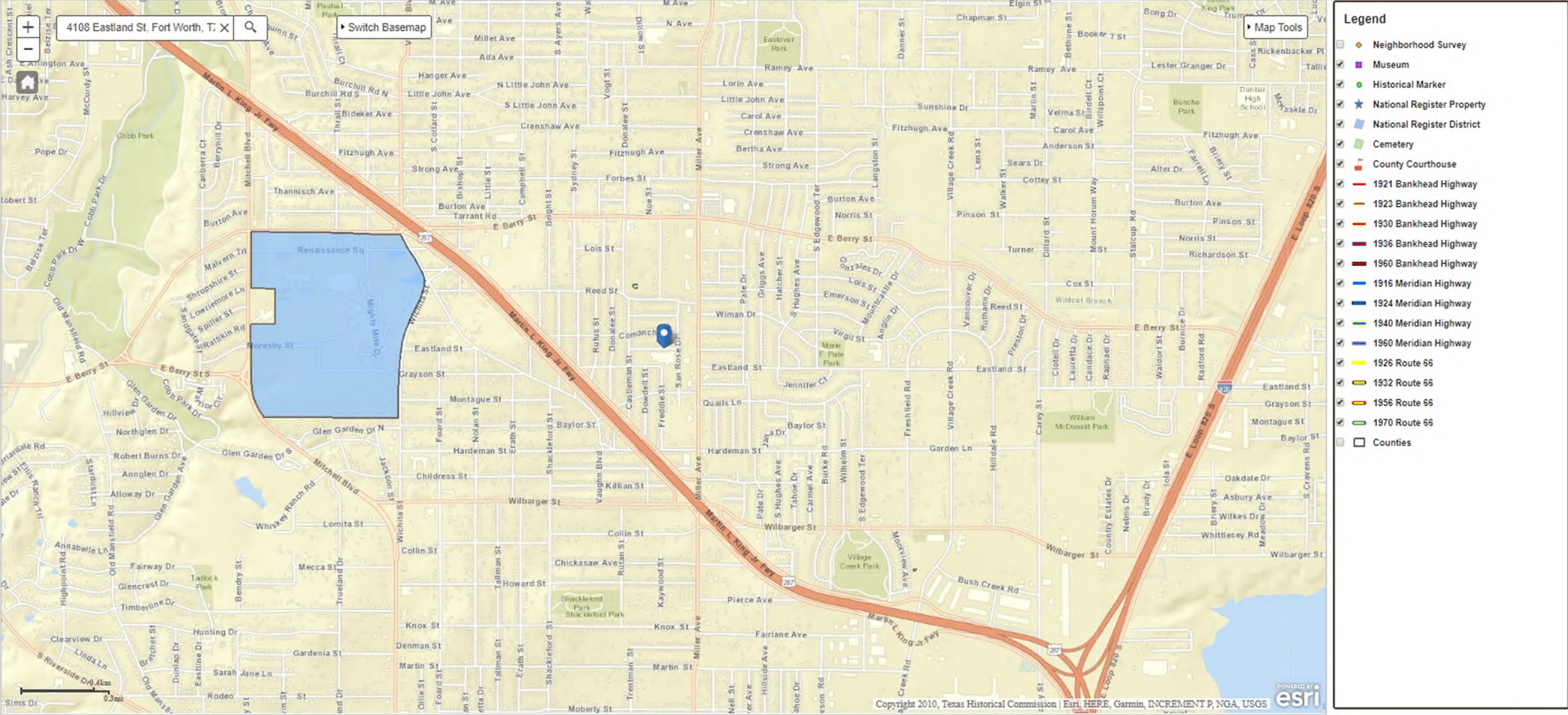
TEXAS HISTORIC SITES *atlas*

history on your desktop

HOME · ATLAS MAP · ADVANCED SEARCH · ABOUT ATLAS · DOWNLOADS

TEXAS HISTORICAL COMMISSION

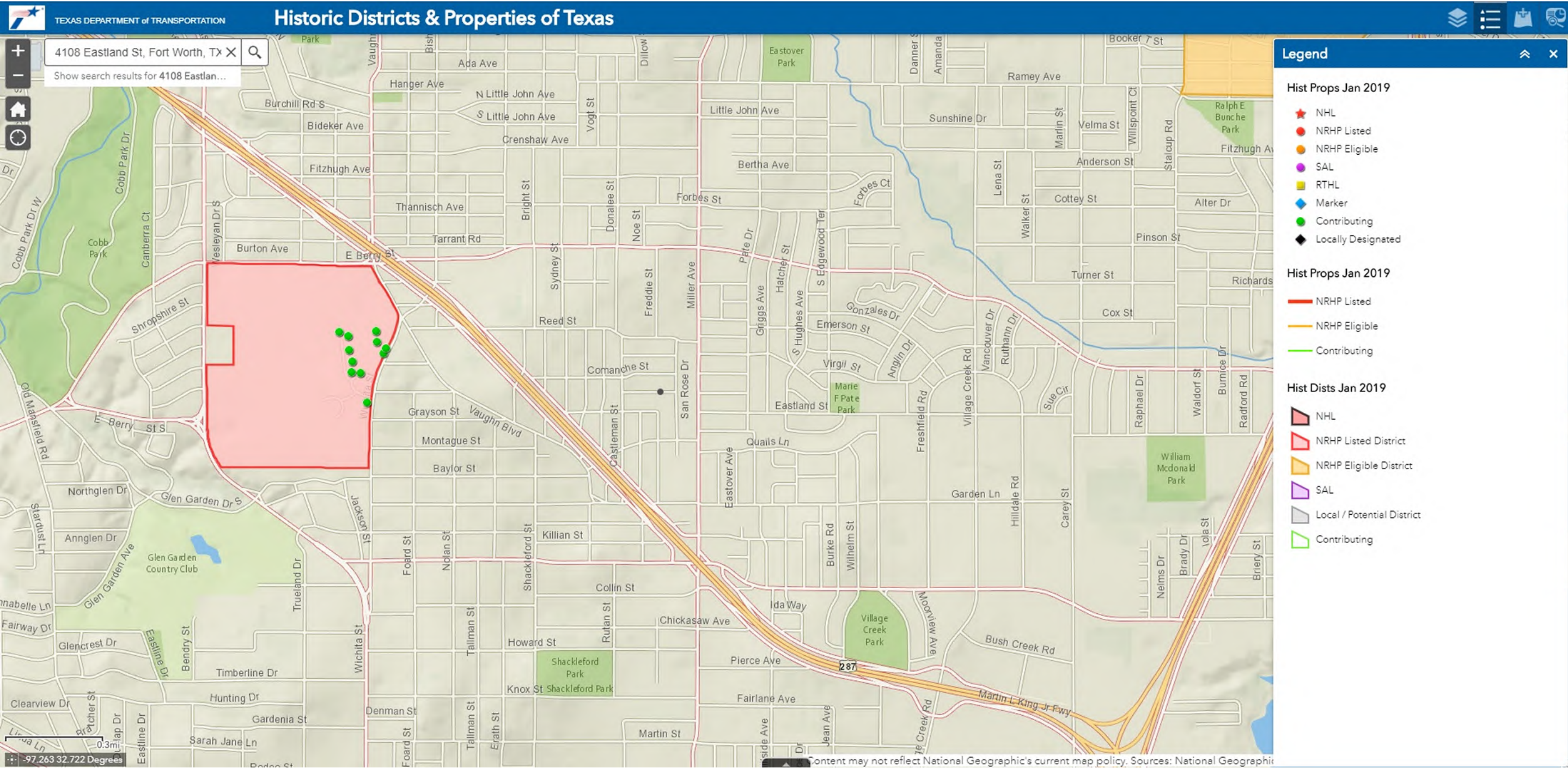
real places telling real stories





C. C. MOSS ELEMENTARY SCHOOL

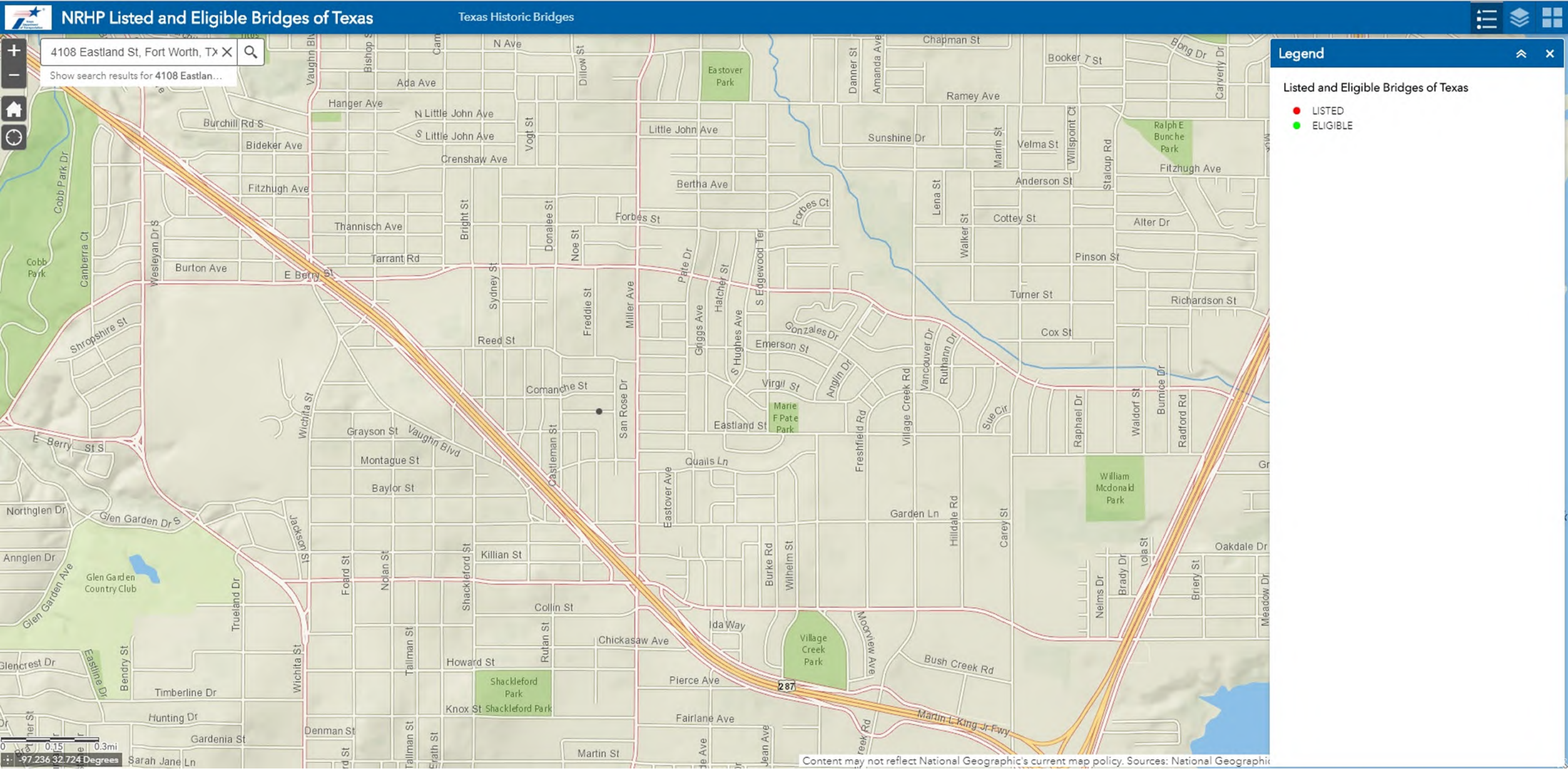
No previously identified historic districts or properties within the study area. The historic properties and historic district indicated are outside the study area.





C. C. MOSS ELEMENTARY SCHOOL

No NRHP-listed or NRHP-eligible bridges within the study area.





**M. L. PHILLIPS ELEMENTARY SCHOOL**

The study area includes one RTHL: the Fairfield Gates Apartments at 3200 Fairfield Avenue. It is not located within the project APE. The other resources indicated on the map are outside the study area.



**M. L. PHILLIPS ELEMENTARY SCHOOL**

Previously identified historic properties within the study area for M. L. Phillips Elementary School are as follows:

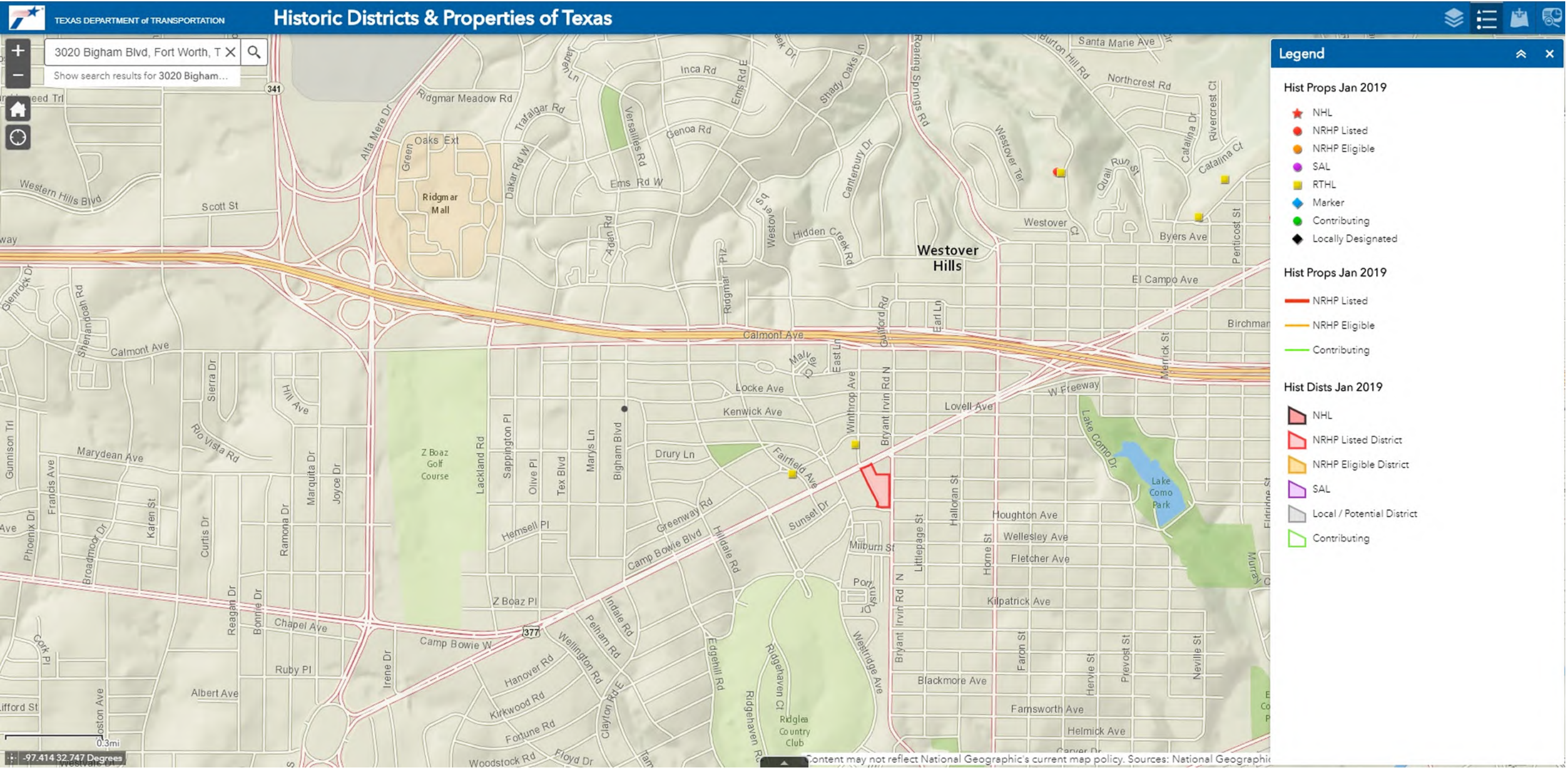
<u>Name</u>	<u>Designation</u>	<u>Within APE?</u>
Fairfield Gates Apartments	RTHL	No
1924 Route – Meridian Highway	--	No
1930–1960 Routes – Bankhead Highway	--	No

The 1924 Meridian Highway and the 1930–1960 Bankhead Highway routes (along Camp Bowie Boulevard) are within the study area. However, there are no recorded NRHP-eligible resources associated with the historic road corridors within the study area.



M. L. PHILLIPS ELEMENTARY SCHOOL

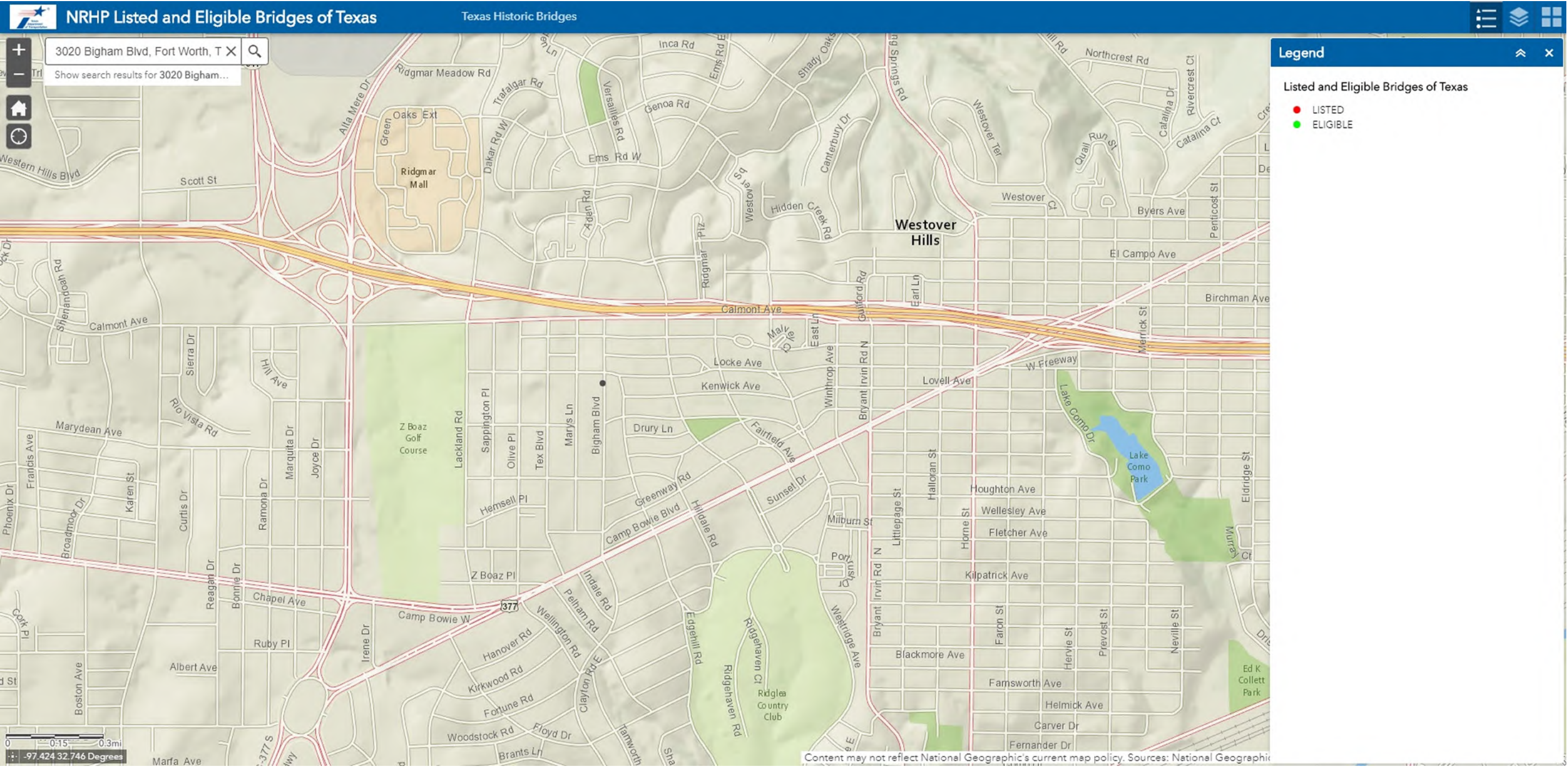
No additional previously identified historic districts or properties within the study area beyond the RTHL indicated in the THC Historic Sites Atlas. The other historic properties and historic district indicated are outside the study area.





M. L. PHILLIPS ELEMENTARY SCHOOL

No NRHP-listed or NRHP-eligible bridges within the study area.





Project Area Photographs  
taken December 2018



Photo 1: Corner of Eastland Street and San Rose Drive, facing southwest towards C. C. Moss Elementary School.



Photo 2: Corner of Eastland Street and San Rose Drive (C. C. Moss Elementary on right side of photo); view facing south.



Project Area Photographs  
taken December 2018



Photo 3: View south along San Rose Drive from intersection with Eastland Street.



Photo 4: Intersection of Miller Avenue and Reed Street; view facing south.



Project Area Photographs  
taken December 2018



Photo 5: Intersection of Miller Avenue and Reed Street showing location of required new ROW at northwest corner; view facing north.



Photo 6: Miller Avenue from intersection with Quails Lane; view facing north.



Project Area Photographs  
taken December 2018



Photo 7: Quails Lane from intersection with Miller Avenue; view facing east.



Photo 8: Miller Avenue from intersection with Quails Lane; view facing south.



Project Area Photographs  
taken December 2018



Photo 9: Freddie Street from intersection with Baylor Street; view facing north (C. C. Moss Elementary in background).



Photo 10: Freddie Street from intersection with Baylor Street; view facing south.



Project Area Photographs  
taken December 2018



Photo 11: Typical house in project area (3878 Freddie Street); view facing northwest.



Photo 12: Rufus Street from the intersection with Grayson Street; view facing north.



Project Area Photographs  
taken December 2018



Photo 13: Typical house in project area (3783 Rufus Street); view facing northeast.



Project Area Photographs  
taken December 2018



Photo 1: M. L. Phillips Elementary School from intersection of Bigham Boulevard and Locke Avenue, facing southwest.



Photo 2: M. L. Phillips Elementary School entrance from Bigham Boulevard, view facing west.



Project Area Photographs  
taken December 2018



Photo 3: Bigham Boulevard from intersection with Locke Avenue; view facing south (M. L. Phillips Elementary on right side of photo).



Photo 4: Locke Avenue from intersection with Bigham Boulevard; view facing west (M. L. Phillips Elementary on left side of photo).



Project Area Photographs  
taken December 2018



Photo 5: M. L. Phillips Elementary School from intersection of Locke Avenue and Marys Lane; view facing southeast.



Photo 6: Bigham Boulevard from intersection with Locke Avenue; view facing north.



Project Area Photographs  
taken December 2018



Photo 7: Locke Avenue from intersection with Bigham Boulevard; view facing east.



Photo 8: Typical house in project area (2963 Marys Lane); view facing east.



Project Area Photographs  
taken December 2018



Photo 9: Marys Lane from north of intersection with Locke Avenue; view facing northeast.



Photo 10: Required new ROW at Bigham Boulevard and Malvey Avenue; view facing west.



Project Area Photographs  
taken December 2018



Photo 11: Required new ROW (Parcel 02422514) at Ridglea Avenue and Curzon Avenue; view facing southwest.



Photo 12: Required new ROW (Parcel 02422514) at Ridglea Avenue and Curzon Avenue; view facing south.



Project Area Photographs  
taken December 2018



Photo 13: Malvey Avenue from intersection with Ridglea Avenue; view facing northwest.



Photo 14: Curzon Avenue, from intersection with Ridglea Avenue; view facing west.