

## ADA Compliant Pedestrian Barricade Detail

### E.2 Detectable Pedestrian Barricades

Detectable Pedestrian Barricades shall comply with the requirements of the Texas Manual on Uniform Traffic Control Devices (TMUTCD). Warning lights shall not be attached to the barricade.

- Safety Rail (Plastic Safety Systems, Inc.)

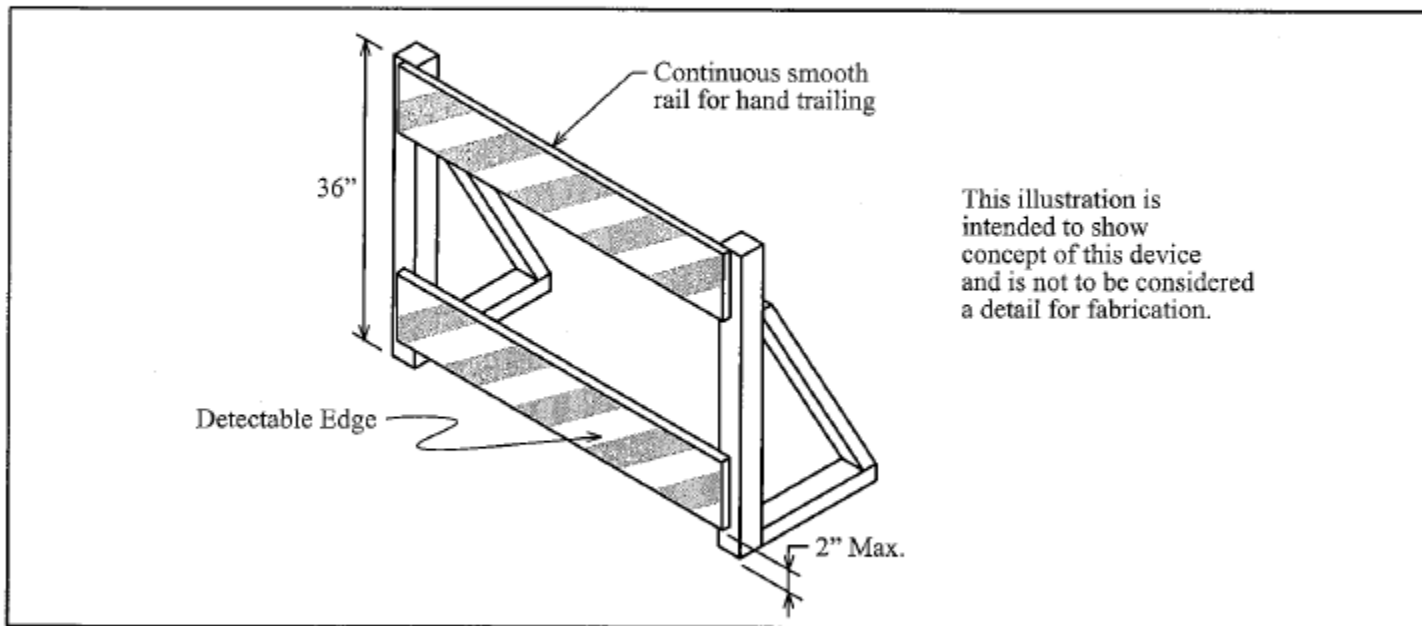


Figure E-2. Detectable Pedestrian Barricade

As of 05-17-2019, must provide a site specific TCP (signed & sealed) or submit a Standard Plan from the CFW Standard TCP Packet. Referenced pedestrian control plans are from the TMTUCD.

## Appropriate Crosswalk and Sidewalk Closures with ADA Compliant Pedestrian Barricades



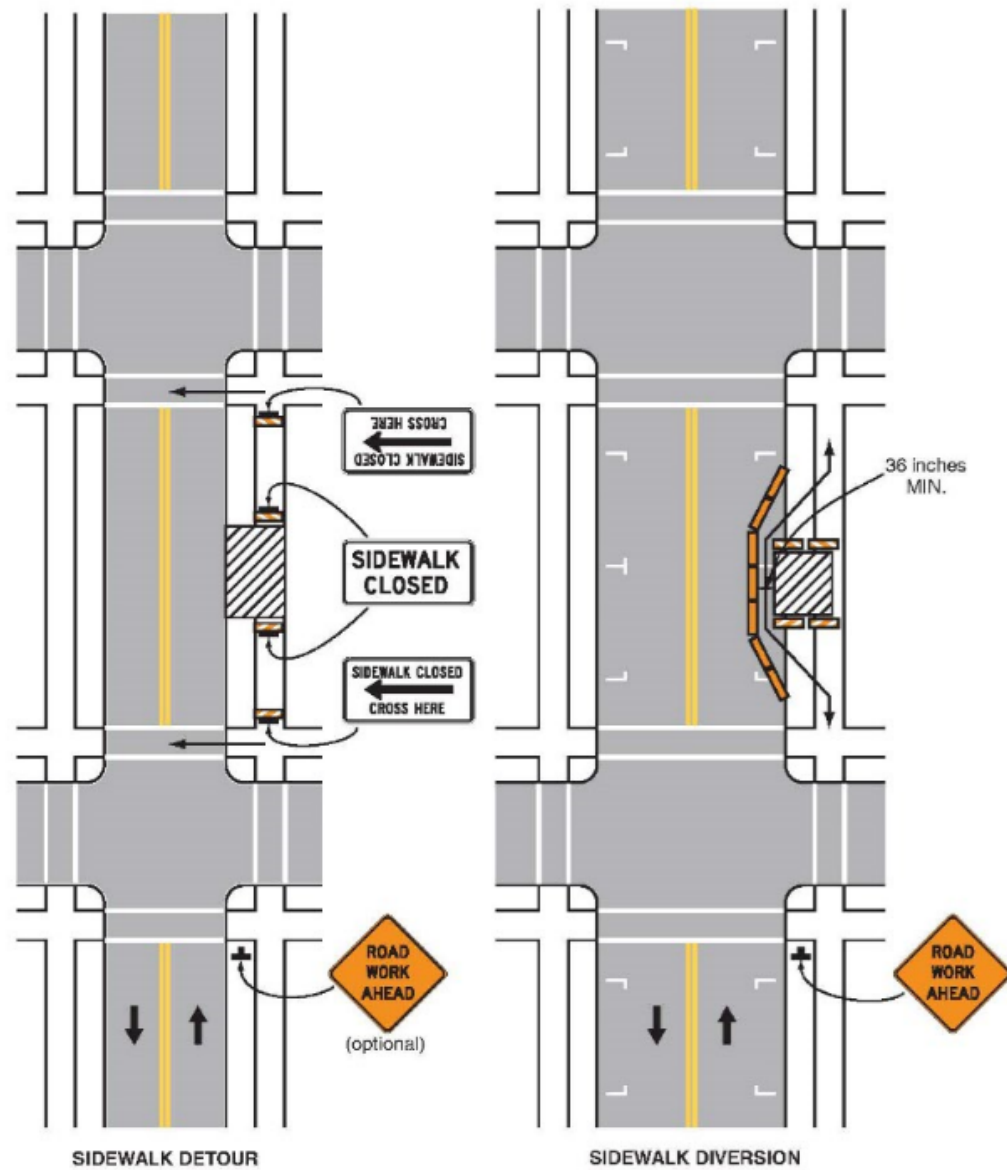
Barricades for Crosswalk Closures shall be set-up to allow impaired pedestrians access up/down ADA ramp and be lined up to ensure visually impaired pedestrians are directed safely.

**BAD EXAMPLES of INAPPROPRIATE signs and barriers for pedestrian control**



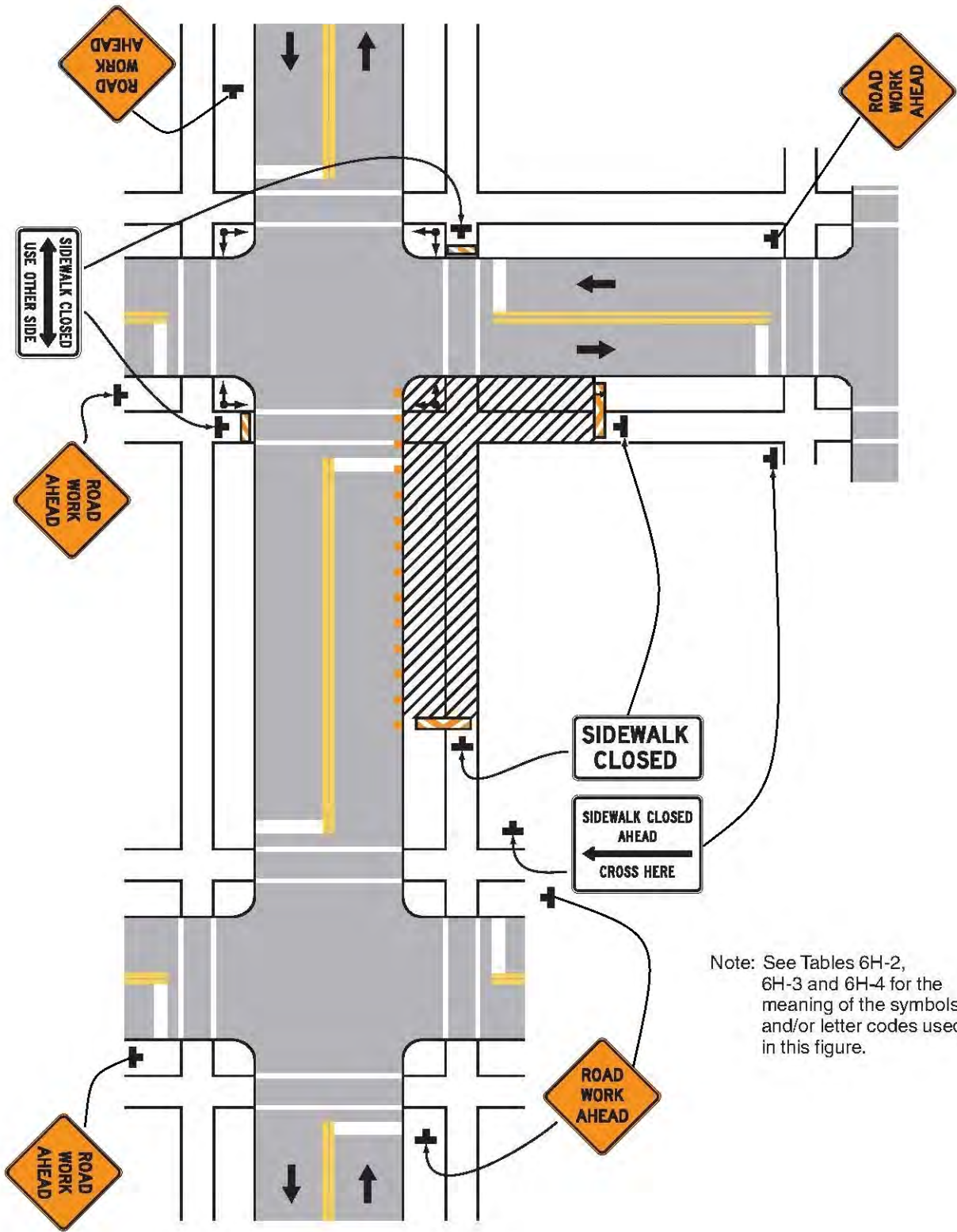
Some of the bad examples do not comply with TMUTCD or ADA guidelines: wrong type of barricade, wrong sign or poor quality. Refer to the TMUTCD or ADA requirements/guidelines for more details and examples.

Figure 6H-28. Sidewalk Detour or Diversion (TA-28)

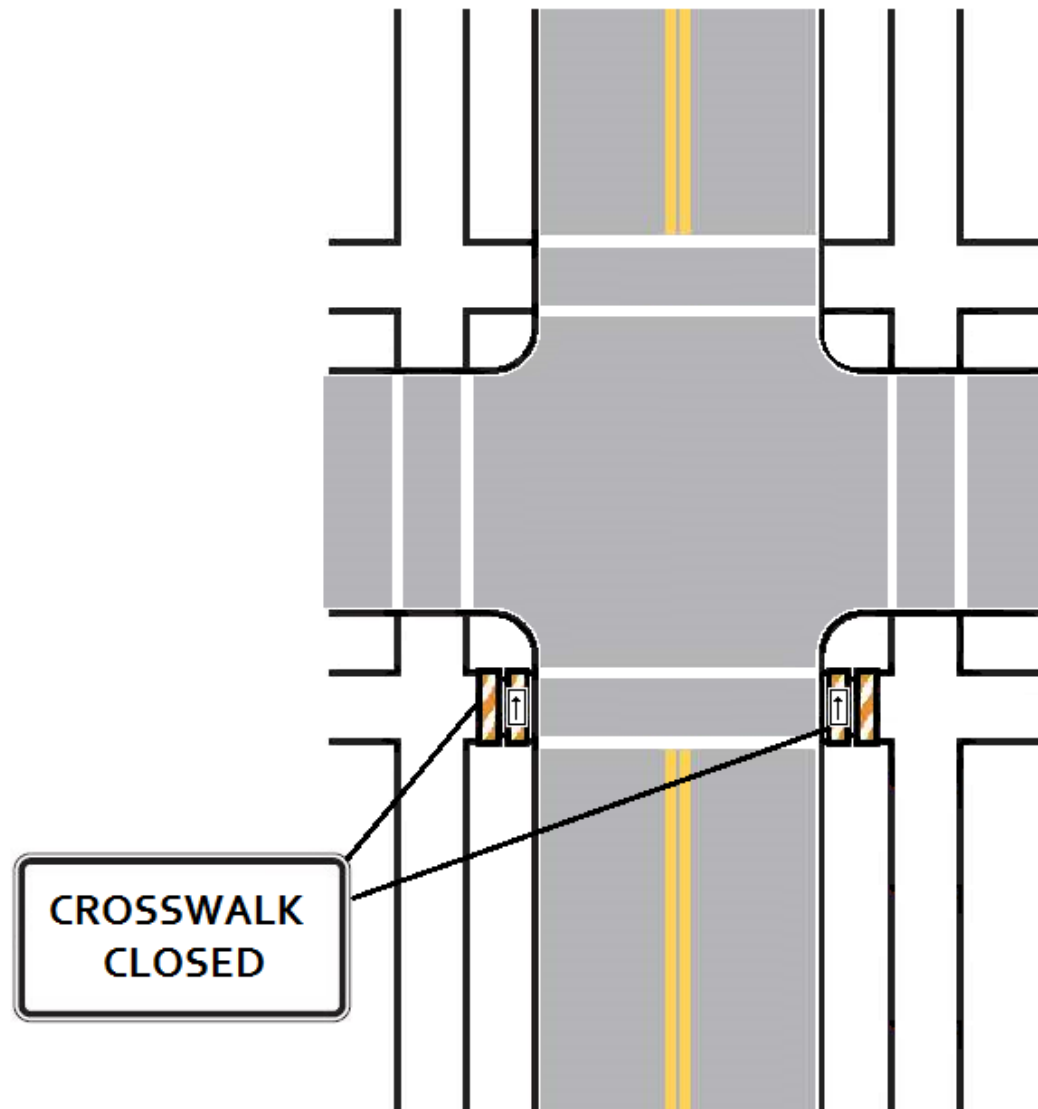


Typical Application 28

Note: See Tables 6H-2 and 6H-3 for the meaning of the symbols and/or letter codes used in this figure.



Note: See Tables 6H-2, 6H-3 and 6H-4 for the meaning of the symbols and/or letter codes used in this figure.



**NOTE: Only one crosswalk closure allowed per block so to allow pedestrians an alternative route. Arrow shall be pointed accordingly.**