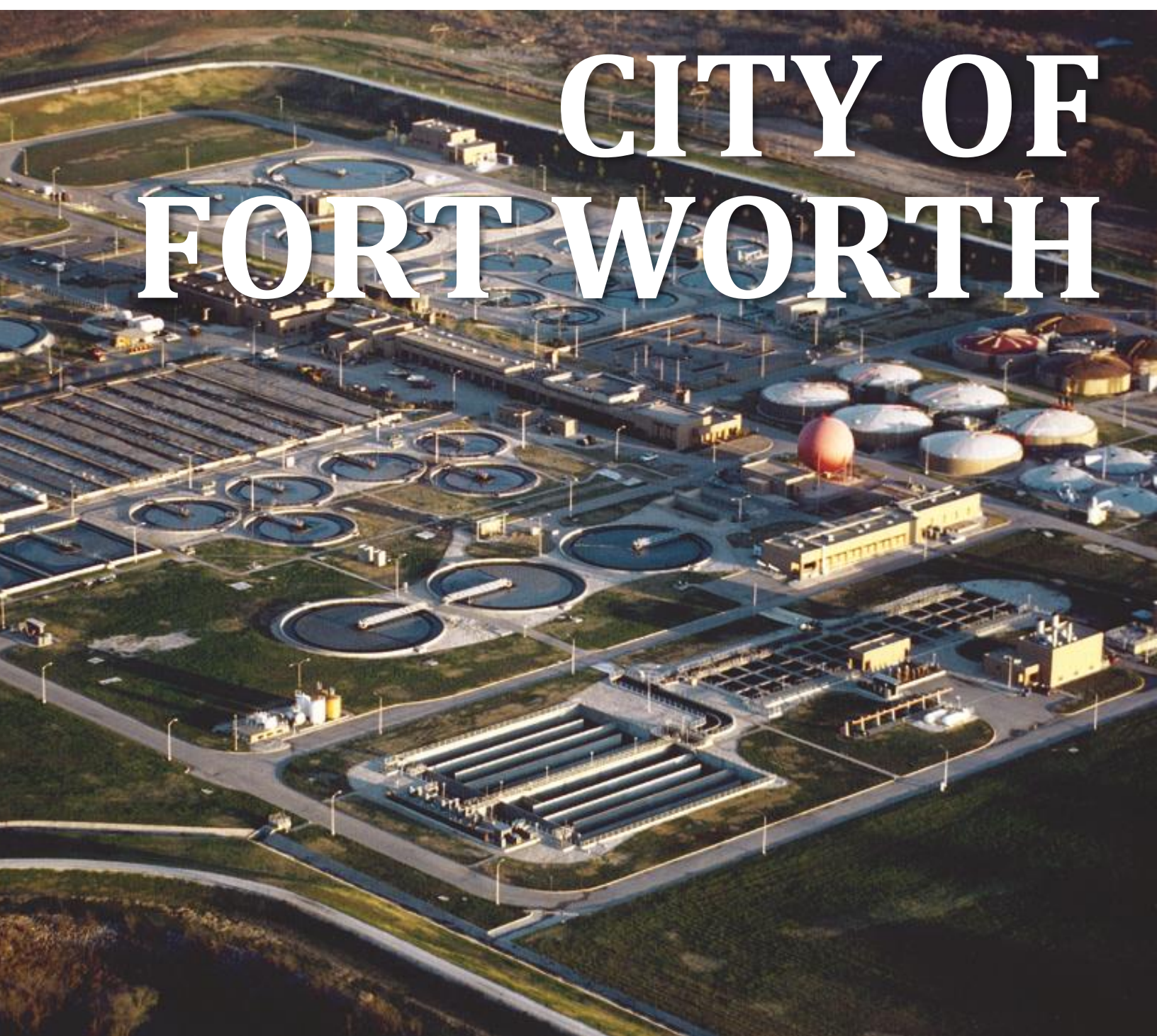


CITY OF FORT WORTH



WATER/WASTEWATER IMPACT FEE UPDATE



EXHIBIT E: SERVICE AREA - WASTEWATER (2025-2045)

PREPARED BY:
FREESE AND NICHOLS, INC.
801 CHERRY STREET, SUITE 2800
FORT WORTH, TEXAS 76102
817-735-7300





Innovative approaches
Practical results
Outstanding service

WATER & WASTEWATER IMPACT FEE UPDATE

EXHIBIT E: WASTEWATER SERVICE AREA (2025 – 2045)

Prepared for:

Fort Worth Water



March 7, 2025

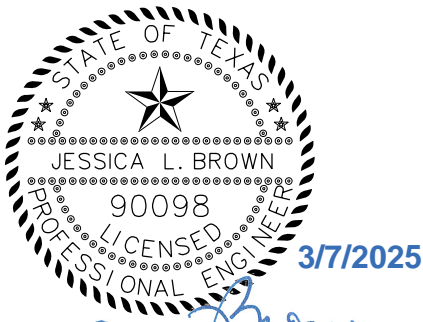
Prepared by:

FREESE AND NICHOLS, INC.
801 Cherry Street, Suite 2800
Fort Worth, Texas 76102
817-735-7300

WATER & WASTEWATER IMPACT FEE UPDATE

Prepared for:

Fort Worth Water



Jessica Brown

FREESE AND NICHOLS, INC.
TEXAS REGISTERED
ENGINEERING FIRM
F-2144



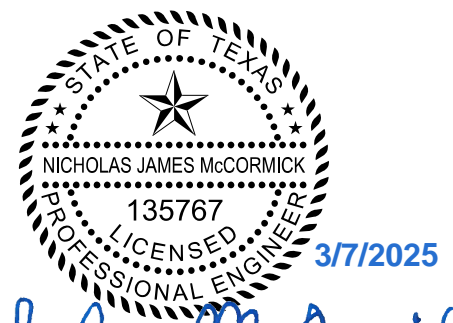
Mazen H. Kawasmi

FREESE AND NICHOLS, INC.
TEXAS REGISTERED
ENGINEERING FIRM
F-2144



Andrew Franko

FREESE AND NICHOLS, INC.
TEXAS REGISTERED
ENGINEERING FIRM
F-2144



Nicholas McCormick

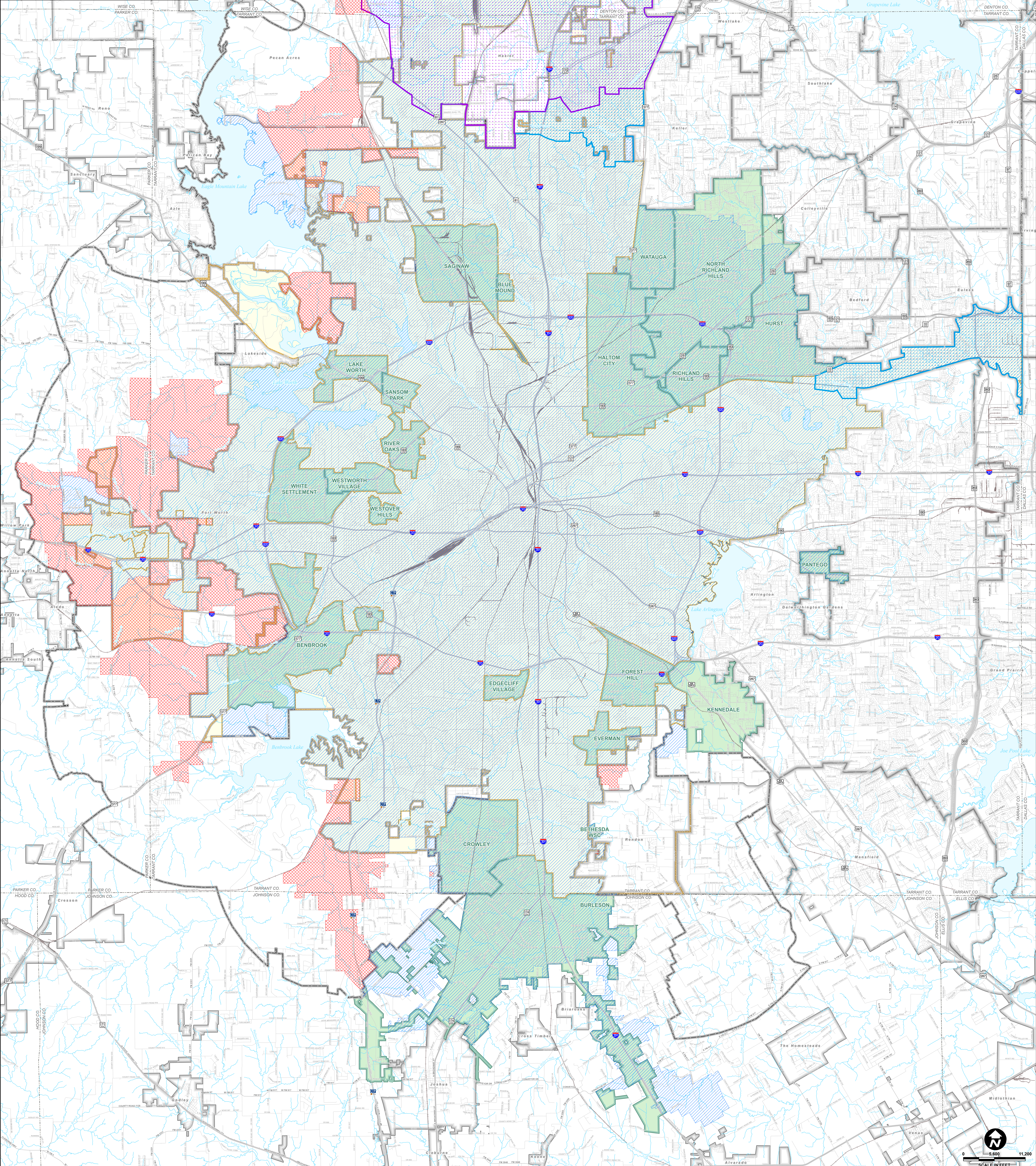
FREESE AND NICHOLS, INC.
TEXAS REGISTERED
ENGINEERING FIRM
F-2144

EXHIBIT E
CITY OF FORT WORTH
WASTEWATER
IMPACT FEE SERVICE AREAS
LEGEND

FORT WORTH

FREESE NICHOLS

Wholesale Customer	Portion Served by Fort Worth			Service Area Boundary
	2025	2035	2045	
Benbrook Water Authority	100%	100%	100%	City Limits + ETJ
Bethesda Water Supply Corp.	1%	1%	1%	Water CCN
Blue Mound	100%	100%	100%	City Limits
Burleson	100%	100%	100%	20-Year Service Area from Master Plan
Crowley	100%	100%	100%	City Limits
Edgecliff Village	100%	100%	100%	City Limits
Everman	100%	100%	100%	City Limits
Forest Hill	100%	100%	100%	City Limits
Haltom City	100%	100%	100%	City Limits
Hurst	92%	92%	92%	City Limits / FTW Served Basins
Kennedale	4%	4%	4%	FTW Served Basins from Master Plan
Lake Worth	100%	100%	100%	City Limits
North Richland Hills	80%	80%	80%	City Limits / FTW Served Basins
Pantego	50%	50%	50%	City Limits
Richland Hills	100%	100%	100%	City Limits
River Oaks	100%	100%	100%	City Limits
Saginaw	100%	100%	100%	City Limits
Sansom Park	100%	100%	100%	City Limits
Trinity River Authority	-	-	-	Denton Creek / Central Basins
Watauga	100%	100%	100%	City Limits
Westover Hills	100%	100%	100%	City Limits
Westworth Village	100%	100%	100%	City Limits
White Settlement	100%	100%	100%	City Limits



FREESE AND NICHOLS, INC.
801 CHERRY STREET, SUITE 2800
FORT WORTH, TEXAS 76102
817-735-7300

www.freese.com