



Mary's Creek Water Reclamation Facility Fact Sheet

The City of Fort Worth is committed to meeting the needs of our customers and ensuring we have the infrastructure in place to provide reliable water and wastewater service now and into the future. The city's water and wastewater utility's mission is to enable our community to thrive with clean water done right every time.

Due to projected population growth and the capacity limits of the current wastewater collection system for the Village Creek Water Reclamation Facility, Fort Worth is proactively planning for the construction of a new water reclamation facility to serve the needs of the western part of the city.

Previous Project Phases

As part of the initial planning phase for this project, the water and wastewater utility conducted a feasibility study and evaluated potential reclaimed water customers. Following these efforts, the city completed a site selection study that ultimately resulted in the 2011 purchase of an approximately 100-acre site at a location north of Mary's Creek along Chapin Road. This is the site of the future Mary's Creek Water Reclamation Facility (MCWRF).

The site selection study included a comprehensive public outreach effort. Fort Worth sought community input by holding two open house events where community members could talk directly to members of the technical team to provide comments and have their questions answered. The utility also convened a Community Advisory Committee (CAC) made up of 17 members that represented organizations in Fort Worth and neighborhoods in the vicinity of the Mary's Creek Basin. The input from the public and the CAC helped the city select the preferred site for the new facility.

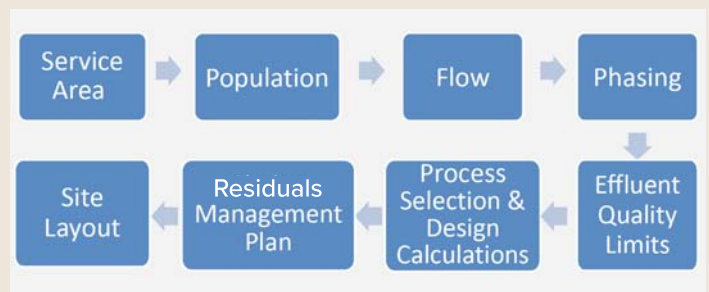
Based on projected growth and anticipated flows, Fort Worth developed an implementation schedule that targets having the facility operational in 2025.



Location of future Mary's Creek Water Reclamation Facility (MCWRF).

Current Permitting Phase

In order to meet the implementation schedule, Fort Worth applied on March 23 to the Texas Commission on Environmental Quality for a Texas Pollutant Discharge Elimination System permit to construct the facility. The city's permit application seeks a two-phase permit. The initial phase is to treat up to 10 million gallons per day (mgd) of wastewater, and a second phase that will increase the treatment capacity to 15 mgd.



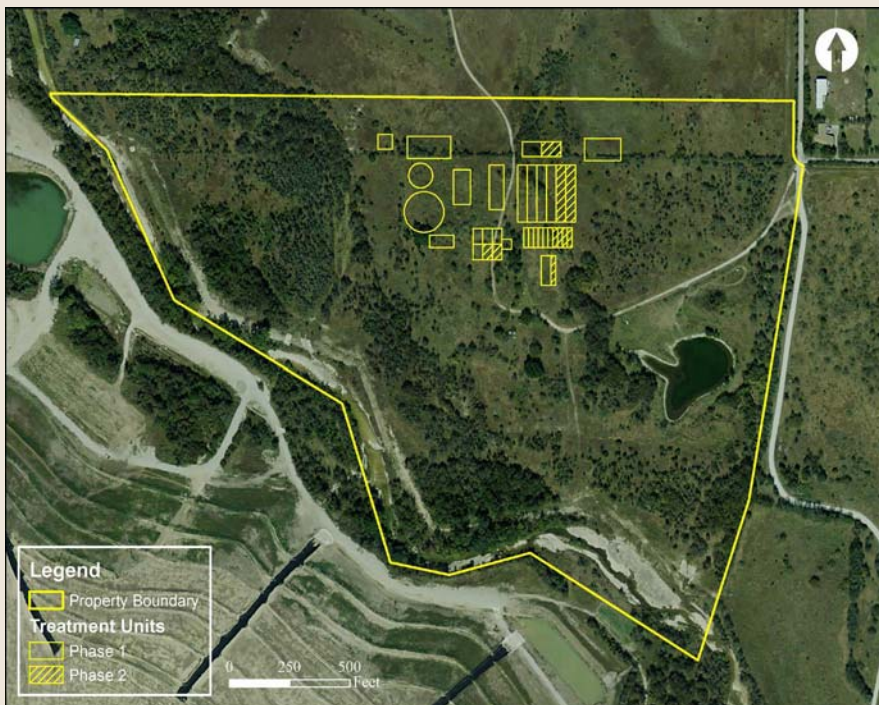
Permit application sequence

Public Participation

As during the site selection phase, Fort Worth is prioritizing community engagement and welcomes public input throughout the permitting process. The city's permit application will be publicly available on the TCEQ website, as will the preliminary decision by the TCEQ. Each will have a formal public comment period.

You can sign up to be on the TCEQ notification list and submit comments at www.TCEQ.texas.gov/permitting.

Get connected and stay informed about the Mary's Creek Water Reclamation Facility project. Go to www.FortWorthTexas.gov to sign up for updates. Enter your email address and select the topics that interest you.



Conceptual layout of the MCWRF



The site of the future facility as seen from Chapin Road.

What is a Water Reclamation Facility?

A water reclamation facility cleans the water that goes down drains in our homes and businesses so it can be reused for beneficial purposes. This highly-treated wastewater is called reclaimed water and must meet strict water quality standards established by the TCEQ. Reclaimed water can be returned to the environment or used to irrigate landscape in public parks, golf courses, residential homes, schoolyards or athletic fields, as well as for commercial and industrial uses. It is a critical part of Fort Worth's future water supply.



One of several low water dams along Mary's Creek



Almost 200 people attended an open house during the site selection process

What is a TPDES permit?

Wastewater permits are essential to manage the quality of local surface water and groundwater. These permits establish limits for the levels of constituents in the treated, discharged wastewater, such as nutrients, suspended solids and oxygen demand. The purpose of the permitting process is for TCEQ to establish the criteria for treated water discharged from the facility to protect aquatic life and public health. Learn more about the TCEQ permitting process by visiting www.TCEQ.texas.gov/permitting.