



# BEING A PET HERO:

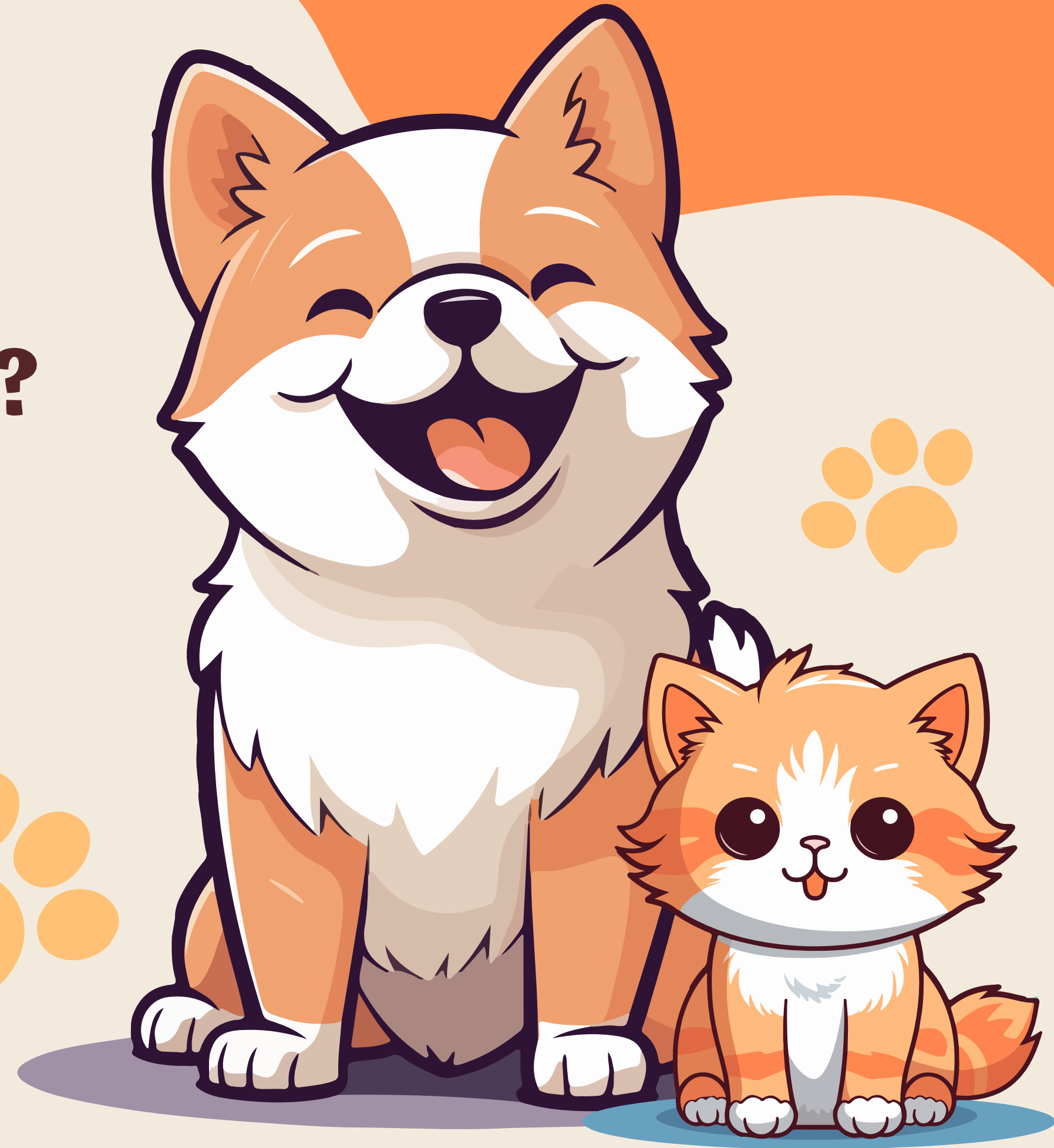
WHAT IT MEANS TO ADOPT AND CARE FOR A SHELTER PET!



[www.fortworthtexas.gov/animals](http://www.fortworthtexas.gov/animals)

# WHAT IS A SHELTER PET?

- Shelter pets are animals who need a new home.
- They may have been lost, abandoned, or rescued.



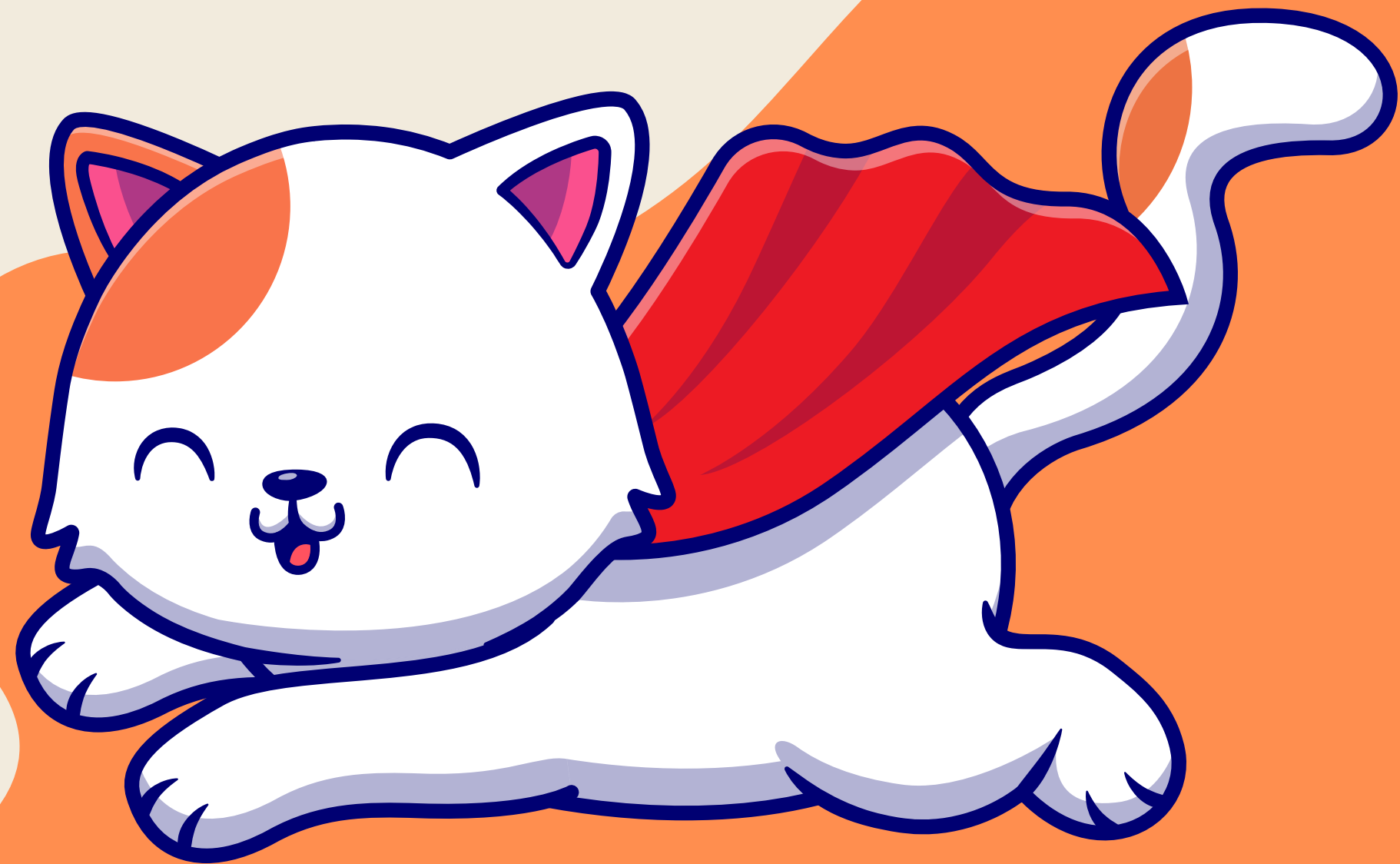


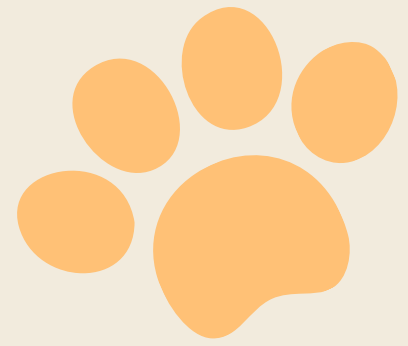
# WHY DO PETS NEED HOMES?

- Pets need love, care, and a safe place to live.
- They don't like being alone in shelters forever.

# ADOPTING MEANS SAVING A LIFE

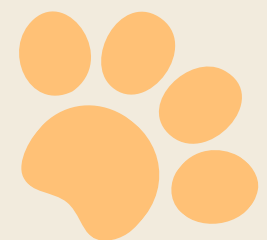
- When you adopt, you give an animal a second chance.
- You become a hero to your new furry friend!

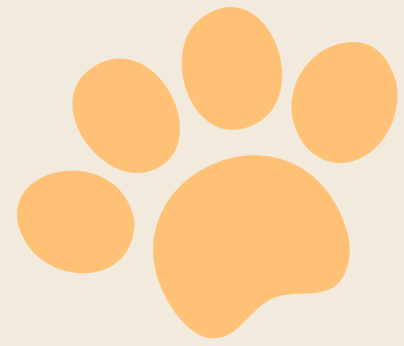




# WHAT PETS NEED EVERY DAY:

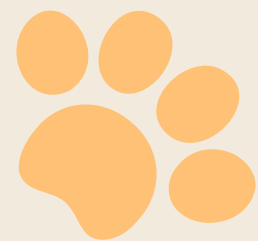
- Food and fresh water
- Clean living space





# WHAT PETS NEED EVERY DAY:

- Playtime and exercise
- Regular walks are key to maintaining your pet's overall health and preventing obesity-related issues.







# VETERINARY CARE

- Pets need check-ups, just like people!
- Shots, grooming, and regular care keep them healthy.

# KEEPING PETS CLEAN


- Pets need baths, brushing, and nail trims.
- Grooming keeps your pet's coat healthy and reduces shedding.







# BE A PET SUPERHERO!

- Pets get happy, scared, and lonely. Be gentle and patient with them.
  - Show your pet love every day!
- 



# LET'S MAKE THE WORLD BETTER FOR ANIMALS!

- Tell your friends about shelter pets.
- Maybe your family could adopt someday!

