

WOODHAVEN NEIGHBORHOOD *Conservation* PLAN



Project Overview
March 21, 2024

Introduction

MAYOR PRO TEM BIVENS



Team Introductions

CONSULTANT TEAM



plus
TIF 13:
WOODHAVEN

with support from
MAYOR PRO TEM BIVENS



INTERFACE STUDIO

Philadelphia

**PLANNING
&
URBAN DESIGN**

Scott Page, Principal-in-Charge
Mindy Watts, Principal / Project Manager
Chris DiStasi, Associate
Tobin Stuff, Urban Designer
Hongyi Li, Urban Designer

**COMMUNITY
OUTREACH
&
ENGAGEMENT**

THE COLLABORATIVE

Fort Worth

Brooke Goggans, Managing Partner
Susan K. Medina, Managing Partner

**ECONOMIC
STRATEGY**

NINIGRET PARTNERS

Boston

Kevin Hively, President

We've worked together in Fort Worth before

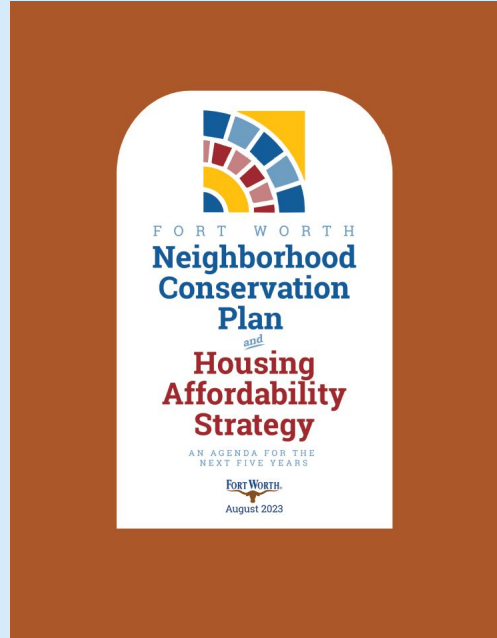
2022 Neighborhood Plan



2023 Downtown Plan



2023 Citywide Strategy

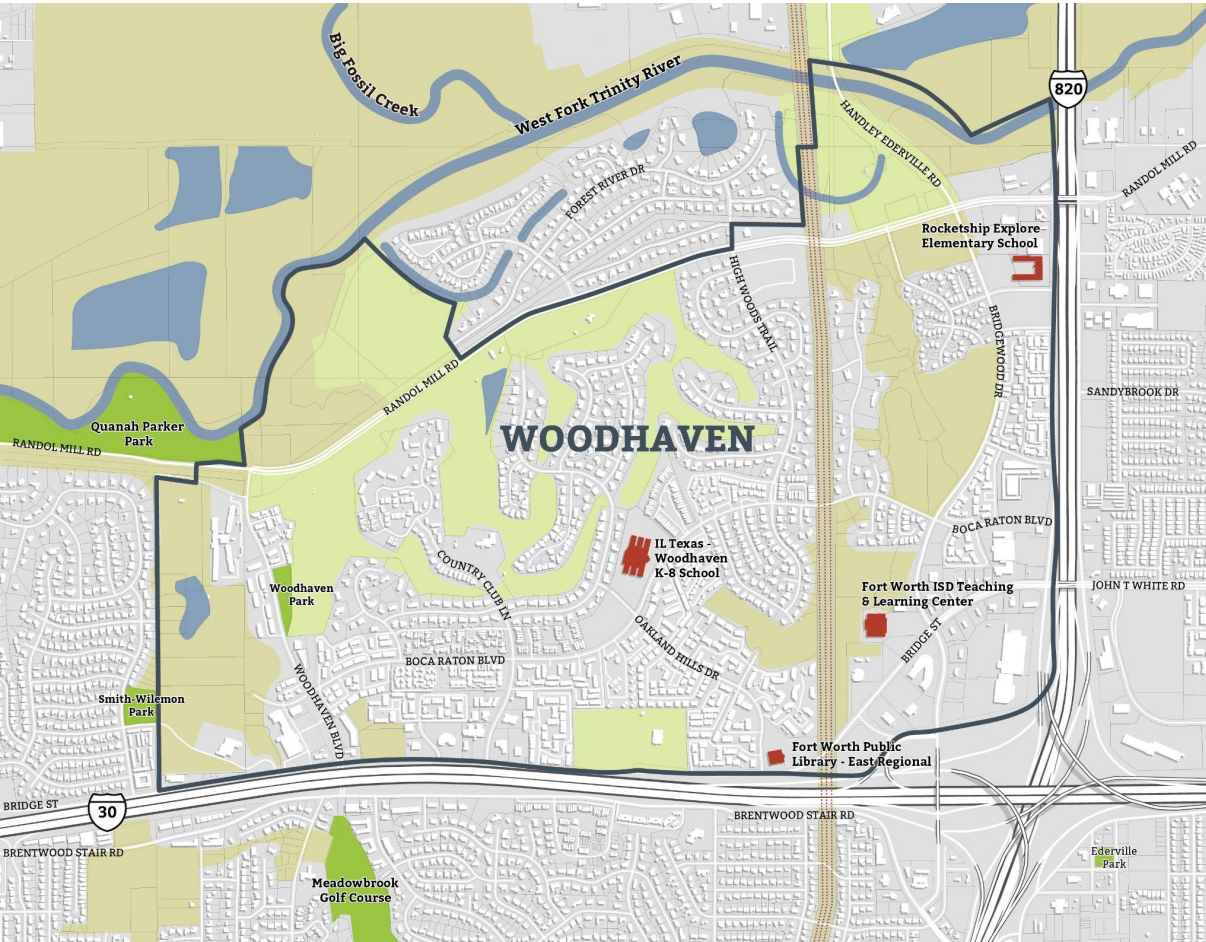


We're excited to be getting started in your neighborhood!

STUDY AREA

includes Woodhaven Neighborhood plus TIF District 13*

* Generally bounded by the Trinity River to the north, Interstate 820 to the east, Interstate 30 to the south, and Willow Ridge Road to the west, this Tax-Increment Financing (TIF) District was created to help fund public infrastructure improvements that will provide a "foundation for development" to encourage and support the long-term public needs of the neighborhood, and secure mixed-use economic growth opportunities in the Woodhaven area.



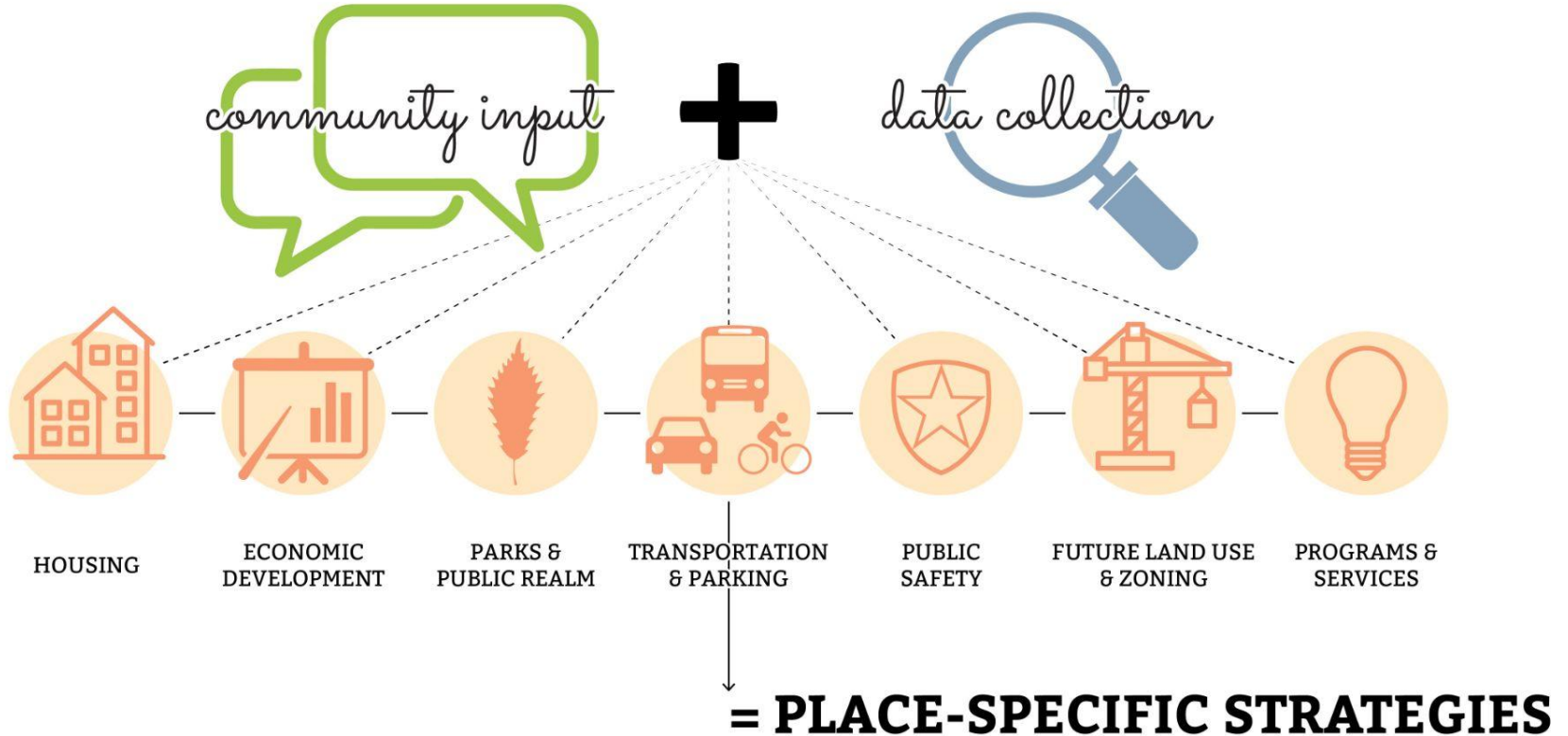
□ STUDY AREA



0 .1 .2 .3 .4 .5 Mile

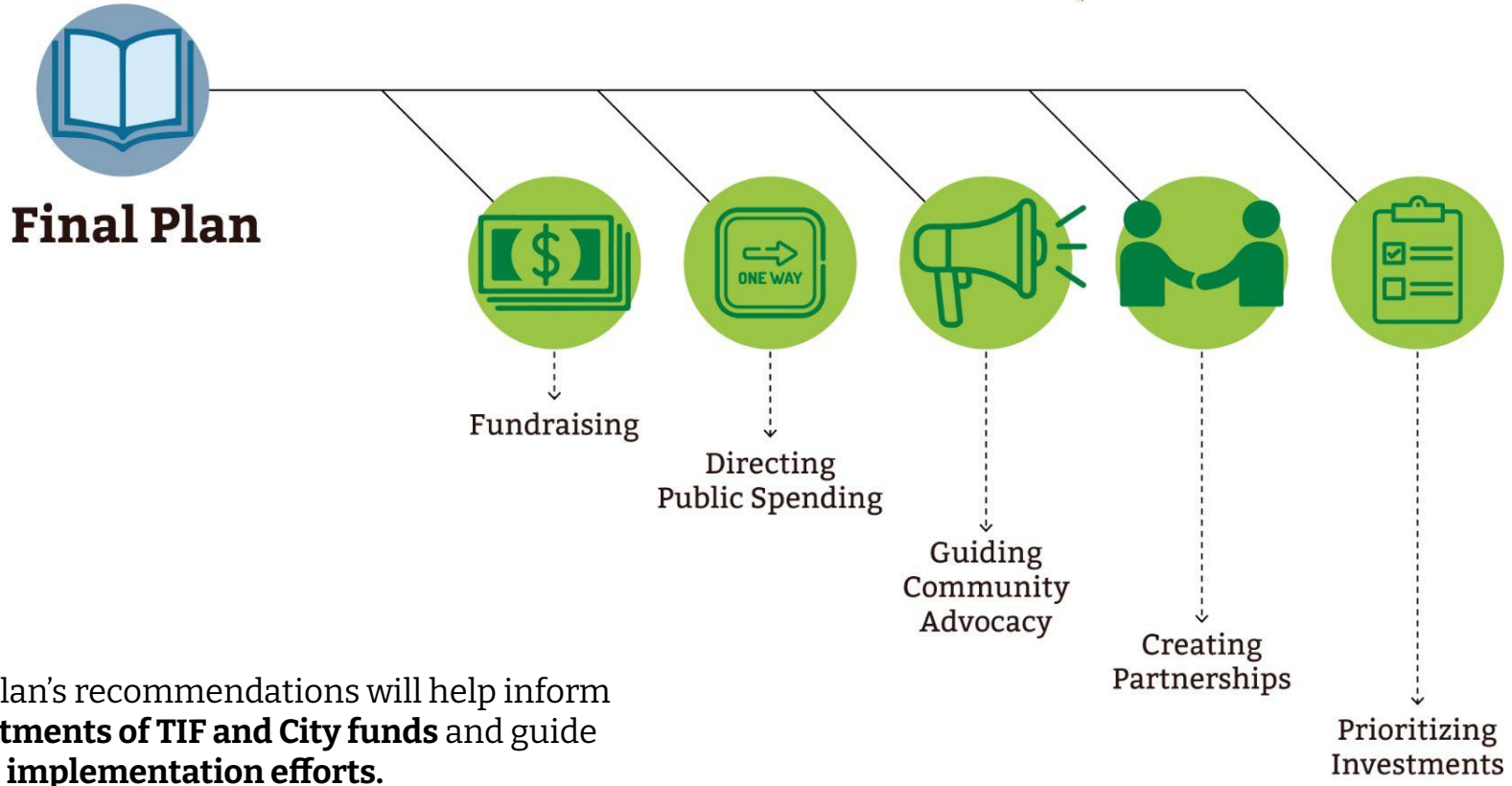


What goes into a Neighborhood Plan?



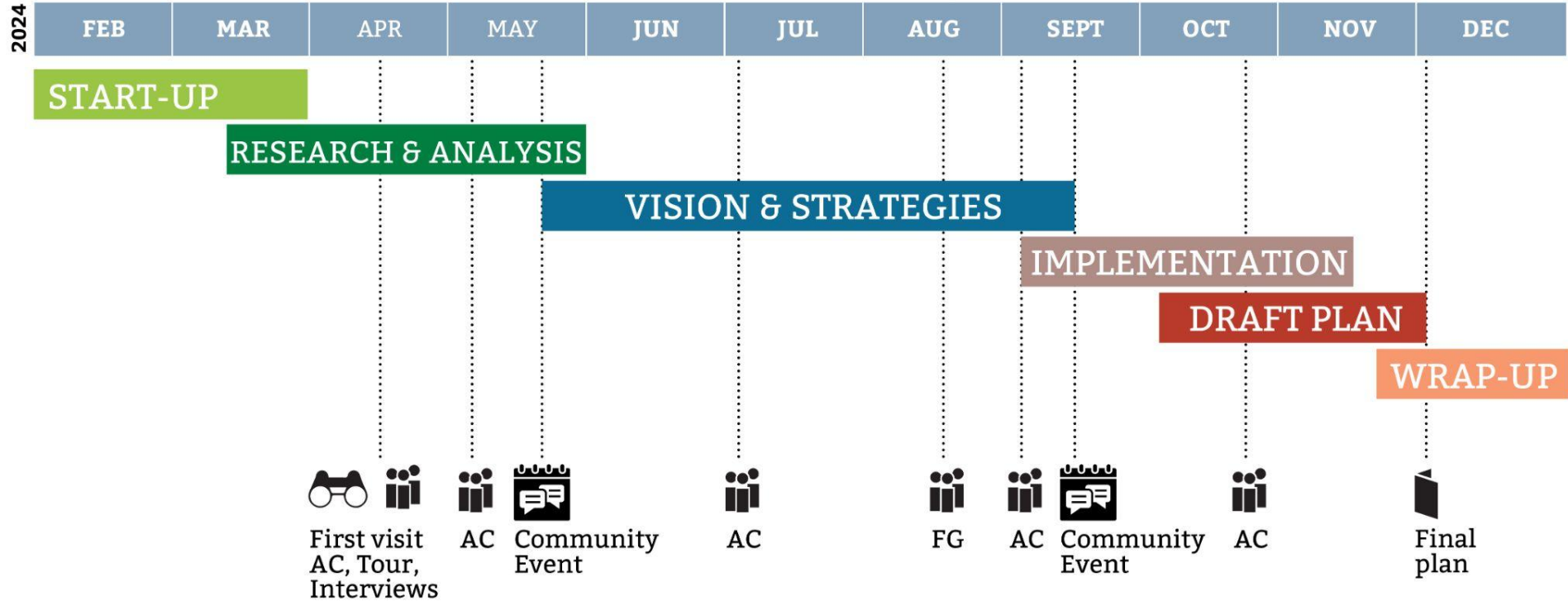
And once the Plan is done...

what is it for?



The plan's recommendations will help inform **investments of TIF and City funds** and guide other **implementation efforts**.

Schedule for the Planning Process

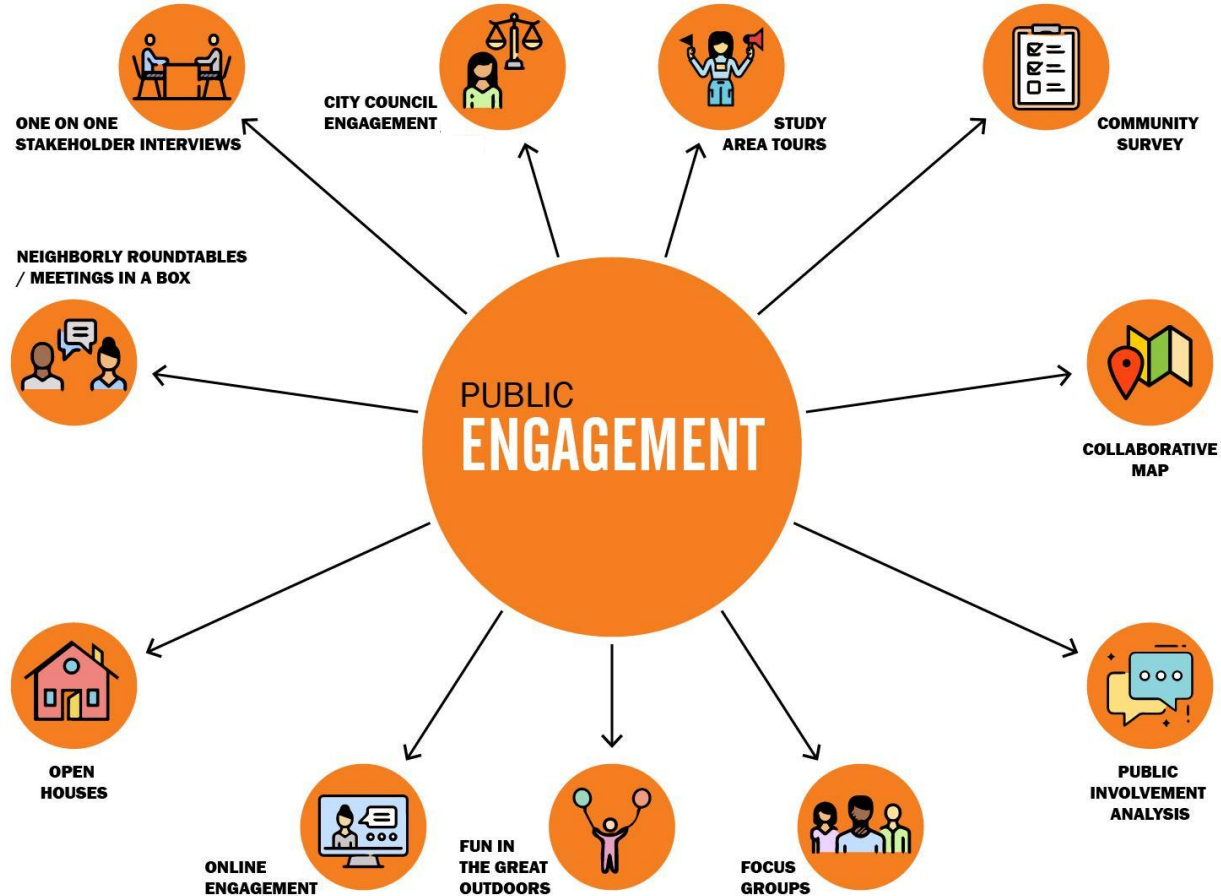


There will be many ways to participate

We'll work to customize the approach to your community.

Generally, the process will include:

- A neighborhood tour
- 20 interviews
- 4 focus groups
- 2 community events, and
- A neighborhood-wide survey



We always aim to make it inclusive and fun!



Your input grounds the plan in the community's vision & values



We'll also:



Convene an

Advisory Committee

- **About 20 people** to help steer the process
- A representative **cross-section of the neighborhood**
- **People in various roles**, including residents, business owners, nonprofit partners, institutional partners, community leaders, City staff, and elected officials
- A group that **can be champions for the plan**
- **Key stakeholders** who will be important to implementing the plan

And:

Hire

Neighborhood Connectors



Generally look for...

- **4 people** to help drive community participation
- From each **corner of the community**
- People with **time** to help distribute and collect survey responses and encourage attendance at neighborhood plan events
- People who are **outgoing and friendly** and like working with their neighbors

Looking ahead to next steps

The team is starting to **collect data, review relevant plans and studies**, and prepare for an **April kick-off visit**, which will include:

- A neighborhood **tour and field survey**
- Initial **interviews**
- **Initial meeting with the Advisory Committee**

The Neighborhood Connectors will support the team with **neighborhood survey roll-out** in May.

The first **Community Visioning Event** will likely be in mid-May.



Want to stay involved?

On your way out, if you haven't already, sign up (on the sign-in sheet) to receive email or text updates about the plan.

Questions? Comments?

Thank You!

Lindsay Mesa, City of Fort Worth
lindsay.mesa@fortworthtexas.gov

Mindy Watts, Interface Studio
mindy@interface-studio.com

Brooke Goggans, The Collaborative
brooke.goggans@thecollaborativefw.com

Susan K. Medina, The Collaborative
susan.medina@thecollaborativefw.com