

**PROMOTING DEVELOPMENT IN THE COMMUNITY**  
*By removing environmental hazards*

## Environmental Quality Brownfields Program

The City of Fort Worth Brownfields Program provides technical guidance and financial resources to resolve environmental hazards on properties. The possible or actual presence of environmental hazards can prevent sites from developing or redeveloping. The Brownfields Program provides support for resource planning, environmental site assessments, cleanup planning and removal of environmental contaminants to property owners, land developers, technical professionals and interested residents.

### WHAT IS A BROWNFIELD?

A brownfield is any property that is or could be contaminated. These properties are often neglected for redevelopment due to complications that real or perceived contamination could cause.

### WHAT ARE SOME OF THE BENEFITS OF BROWNFIELD REDEVELOPMENT?

The program either directly assesses or supports the assessment and removal of environmental contamination. Doing so reduces blight, deters crime, supports economic development, increases property values, reduces risk to human health and the environment, and improves community pride and quality of life.

### WHAT ARE COMMON EXAMPLES OF BROWNFIELDS?

Brownfields may be contaminated with polluted soil, groundwater, materials used at the time of construction or a combination of some or all of these. Some common environmental issues that may be resolved through the Brownfields Program include: underground petroleum storage tanks, heavy metals or petroleum products in soil, solvents in groundwater, asbestos-containing materials in structures and lead paint on structures.

### WHAT FUNDING OPTIONS ARE AVAILABLE TO OFFSET THESE COSTS?

The Brownfields Program can provide technical guidance and information about resources to offset the costs for brownfields cleanup activities. Low-

interest, below-market rate loans may be available to any property owner (public or private). Subgrants from the Environmental Protection Agency and other resources may also be available to nonprofit groups or other qualifying agencies.

### WHAT ARE THE COMMON STEPS FOR RESOLVING ENVIRONMENTAL ISSUES AT A BROWNFIELD?

**Step 1: Phase I Environmental Site Assessment (Phase I ESA)** - A certified professional conducts site visits and reviews historic records. Area residents may also be interviewed regarding potential environmental concerns.

**Step 2: Phase II Environmental Site Assessment (Phase II ESA)** - If a Phase I ESA identifies environmental concerns, then a Phase II ESA is conducted. A certified professional collects samples and instrument readings to confirm or reject the presence of contaminants and to determine the magnitude.

**Step 3: Site Cleanup Plan** - Once the extent of contamination is determined, a certified professional develops a site cleanup plan to determine the best environmental engineering methods and associated costs to remediate the site.

**Step 4: Site Remediation (Cleanup or Removal)** - Methods identified in the site cleanup plan are executed, and the site contamination is fully removed or cleaned up to standards that are safe and acceptable.

To find out more or to apply for the program, contact the City of Fort Worth Brownfields Program by emailing [brownfields@fortworthtexas.gov](mailto:brownfields@fortworthtexas.gov) or by calling (817) 392-1234 to begin reviewing your property and discussing your options. You may be eligible to apply for a loan or subgrant for Phase I and Phase II assessments, to develop a clean-up plan and to complete your site cleanup actions.

#### QUESTIONS?

Customer Call Center: 817-392-1234  
[brownfields@fortworthtexas.gov](mailto:brownfields@fortworthtexas.gov)  
[www.fortworthtexas.gov/brownfields](http://www.fortworthtexas.gov/brownfields)

## BROWNFIELDS SUCCESS STORIES

### Evans and Rosedale

**Before**



**During**



**Planned**



In the Evans and Rosedale area, the City of Fort Worth Brownfields Program conducted Phases I and II environmental site assessments, covering about 110 parcels of land that historically supported commercial and residential areas. After reviewing environmental conditions, some sites redeveloped to what is now the Hazel Harvey Peace Center for Neighborhoods, Shamblee Branch Library, a public park, a renovated street and a plaza. The area is still growing and redeveloping.

### Crossroads Art Gallery

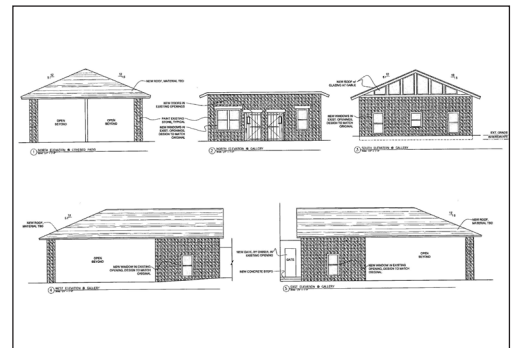
**Before**



**During**



**Planned**



Plans for redeveloping a 1940s fuel station in the Lake Como neighborhood into an art studio and gallery are currently in the works. The nonprofit organization that owns the site worked with the City of Fort Worth and received grant funds from the Texas Commission on Environmental Quality (TCEQ) to complete Phase I and Phase II Environmental Site Assessments. The assessments of the site and the removal of underground storage tanks came at no cost to the nonprofit organization thanks to the grant funding.

**QUESTIONS?**

Customer Call Center: 817-392-1234  
brownfields@fortworthtexas.gov  
www.fortworthtexas.gov/brownfields