



Westcliff, Como, Bluebonnet and Stop 6 Infrastructure community design meeting

Thursday May 11, 2023

6 p.m.

WebEx virtual meeting

Agenda

- Introductions
- Project Overview
- Project Area
- Frequently Asked Questions
- Timeline



Your project team includes:

Project Manager: Zak Zakersalehi

- 817-392-8695; Abolfazl.Zakersalehi@fortworthtexas.gov

Engineering Design Consultant: CP&Y

- Randy Bush and Beth Kochur

Why are we doing this project?



Fort Worth prioritizes replacing water and sewer lines that have a high risk of failure. Risk of failure is determined based on available data which includes:

- Water main break history
- Leak history
- CCTV (closed circuit TV) inspection
- Age of the line
- Line material
- Lead service lines
- Cast iron lines

What drives this improvement project?

This capital improvement project includes the replacement of existing cast iron water lines. Those water lines will be replaced on:

- Alton Road
- South Hills Avenue
- Winslow Drive
- Willie Street
- Benbrook Boulevard
- West Butler Street



Project Scope

The May 6, 2023, council election added a fourth council district to this project area to include Council District 3, Council District 5, Council District 6 and Council District 9.

The project sites are south of I-30/West Freeway, east of Camp Bowie Boulevard, northwest of Granbury Road and west of East Loop 820 South.

Fort Worth Water will replace existing water and sewer mains in streets as well as in alleys and easements.



Project Area – Map 1

- Alley between Libbey Avenue and Blackmore Avenue from Littlepage Street to 275 feet east (sewer)
- Alley between Goodman Avenue and Libbey Avenue from Horne Street to 210 feet east (sewer)

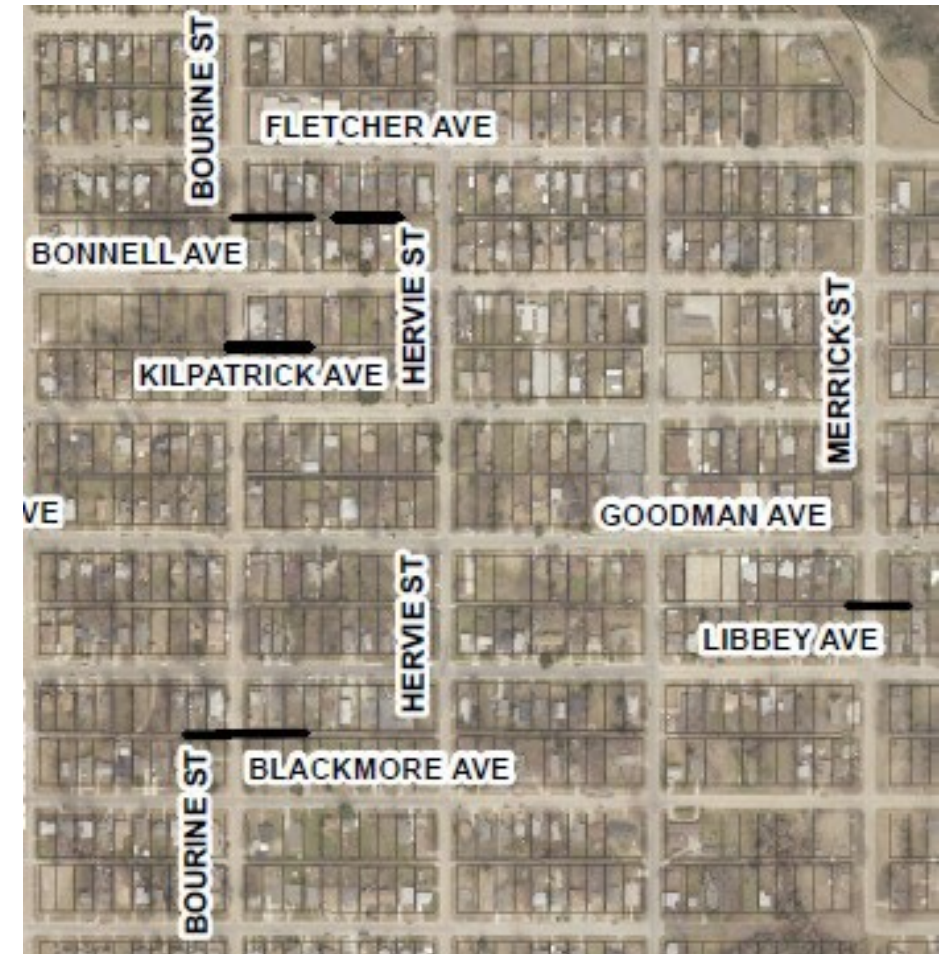
*Fort Worth Council District 6
Construction will impact the Como neighborhood association.
Map 1 was formerly Council District 3.*



Project Area – Map 1

- Alley between Libbey Avenue and Blackmore Avenue from 120 feet west of Bourine Street to 190 feet east of Bourine Street (sewer)
- Alley between Kilpatrick Avenue and Bonnell Avenue from Bourine Street to 230 feet east of Bourine Street (sewer)

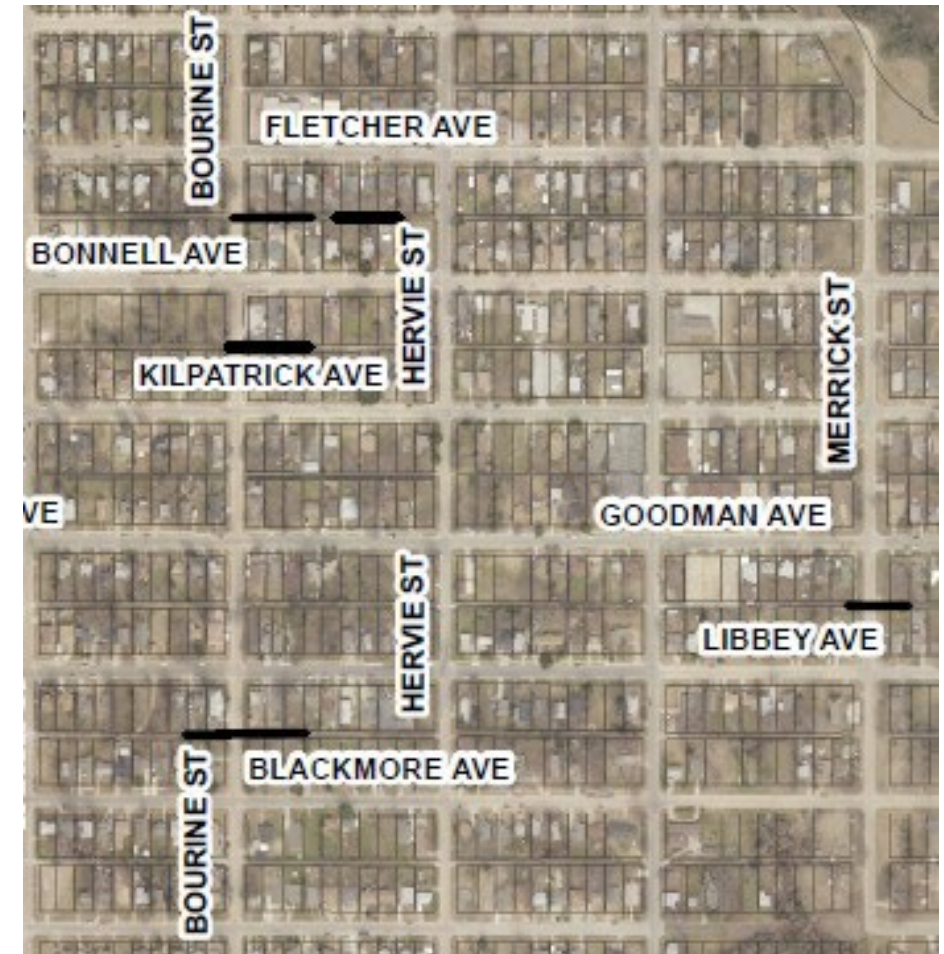
*Fort Worth Council District 6
Construction will impact the Como neighborhood association.
Map 1 was formerly Council District 3.*



Project Area – Map 1

- Alley between Fletcher Avenue and Bonnell Avenue from Bourine Street to 440 feet east (sewer)
- Alley between Goodman Avenue and Libbey Avenue from 50 feet west of Merrick Street to 50 feet west of Merrick Street (sewer)

*Fort Worth Council District 6
Construction will impact the Como neighborhood association.
Map 1 was formerly Council District 3.*

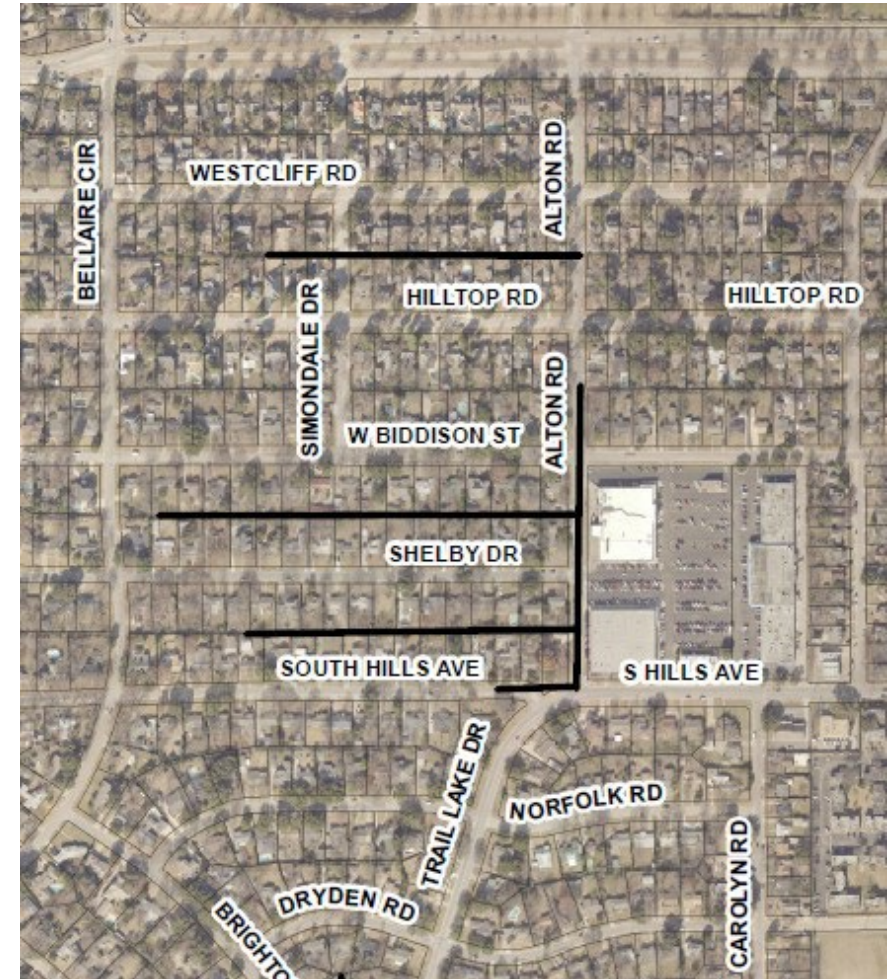


Project Area – Map 2

- Alley between Westcliff Road and Hilltop Road from Alton Road to 270 feet west of Simondale Drive (sewer)
- Alley between Biddison Street and Shelby Drive from Alton Road to 1,240 feet west (sewer)
- Alley between South Hills Avenue and Shelby Drive from Alton Road to 920 feet west (sewer)

Council District 3

Construction will impact the Westcliff West neighborhood association and the Westcliff neighborhood association

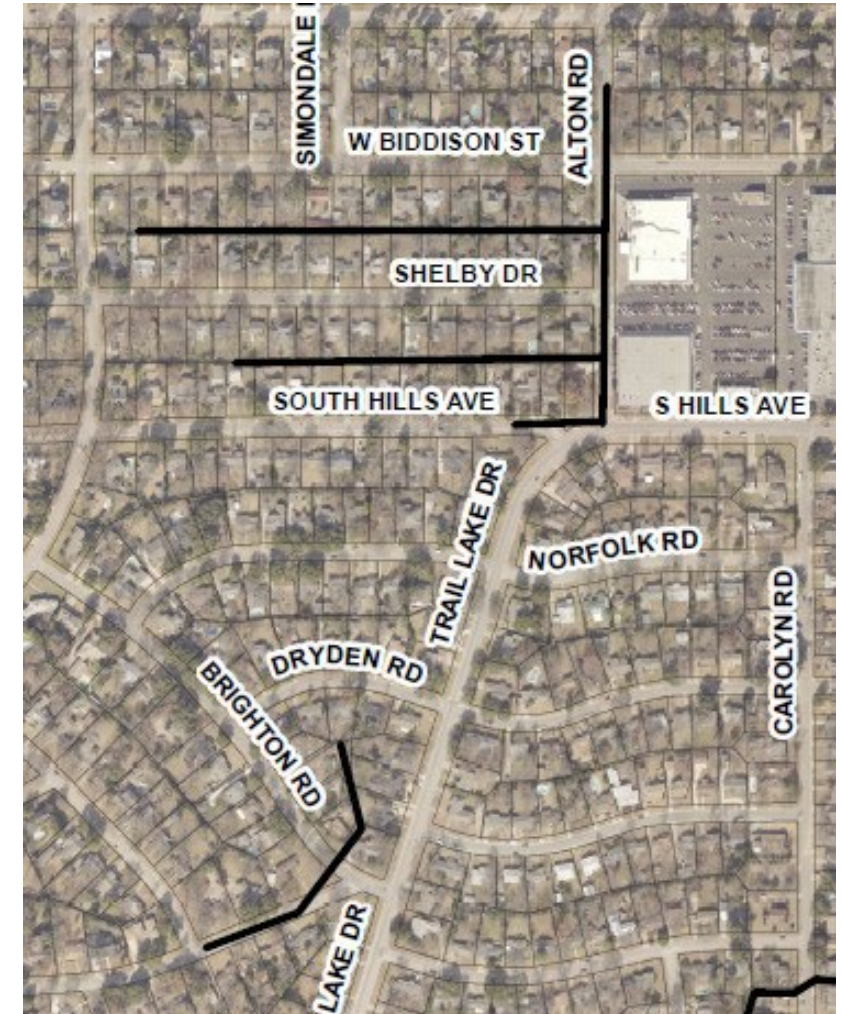


Project Area – Map 2

- Alton Road from 200 feet north of West Biddison Street to South Hills Avenue (water & sewer)
- South Hills Avenue from Alton Road to 250 feet west (water)
- Winslow Drive from Somerset Lane to Brighton Road (water and sewer)

Council District 3

Construction will impact the Westcliff West neighborhood association and the Westcliff neighborhood association.



Project Area – Map 2

- Easement west of Trail Lake Drive from Winslow Drive to 170 feet north, then 240 feet northwest (sewer)

Council District 3

Construction will impact the Westcliff West neighborhood association and the Westcliff neighborhood association.



Project Area – Map 2

- Alley between Carolyn Road and Boyd Avenue from 100 feet south of Brady Avenue to 560 feet south (sewer)
- Easement north of Brady Avenue from Stadium Drive to 490 feet west (sewer) - currently in Council District 9 but will become the future Council District 3

Council District 3

Construction will impact the Westcliff West neighborhood association and the Westcliff neighborhood association.



Project Area – Map 2

- Alley between Carolyn Road and Acacia Street from 90 feet south of Plymouth Avenue to 1,000 feet south (sewer)
- Easement - west and east of Carolyn Road - from 130 feet west of Carolyn to 140 feet east of Carolyn Road (sewer)

Council District 3

Construction will impact the Westcliff West neighborhood association and the Westcliff neighborhood association.

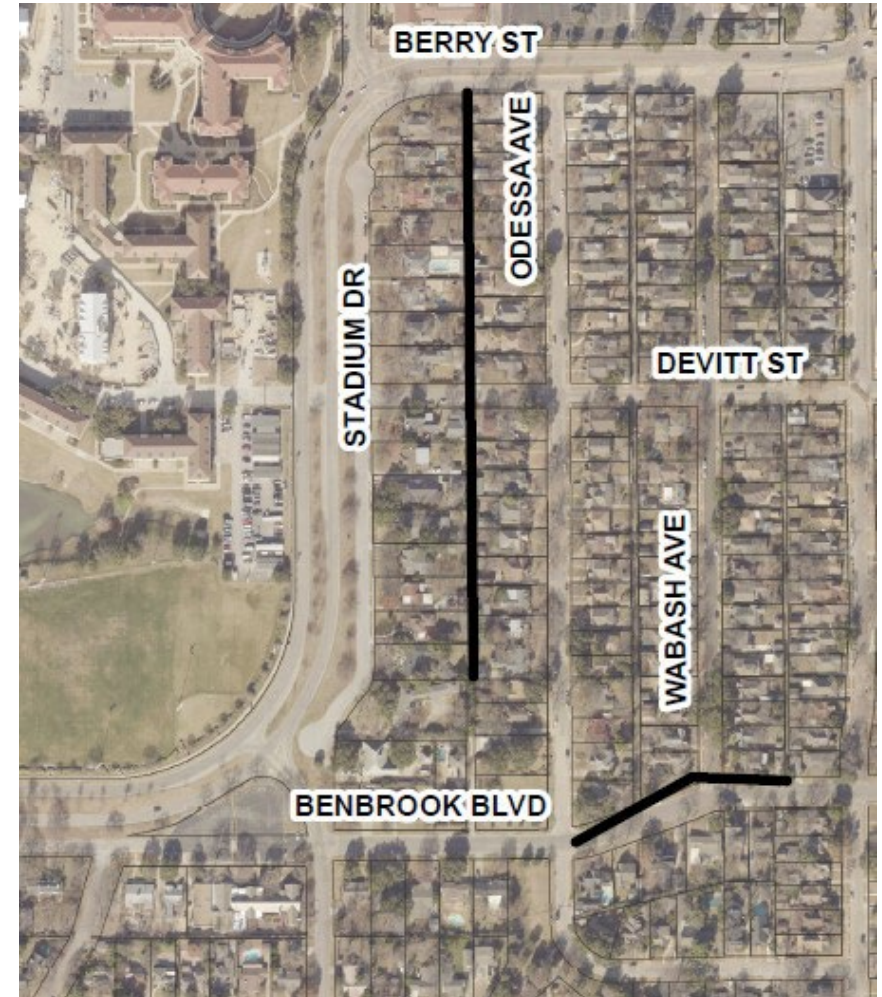


Project Area – Map 3

- Alley between Stadium Drive and Odessa Drive from West Berry Street to 1,200 feet south (sewer)
- Benbrook Boulevard right-of-way from Odessa Avenue to 155 feet east of Wabash Avenue (water and sewer)

Council District 9

Construction will impact the Bluebonnet Hills neighborhood association.

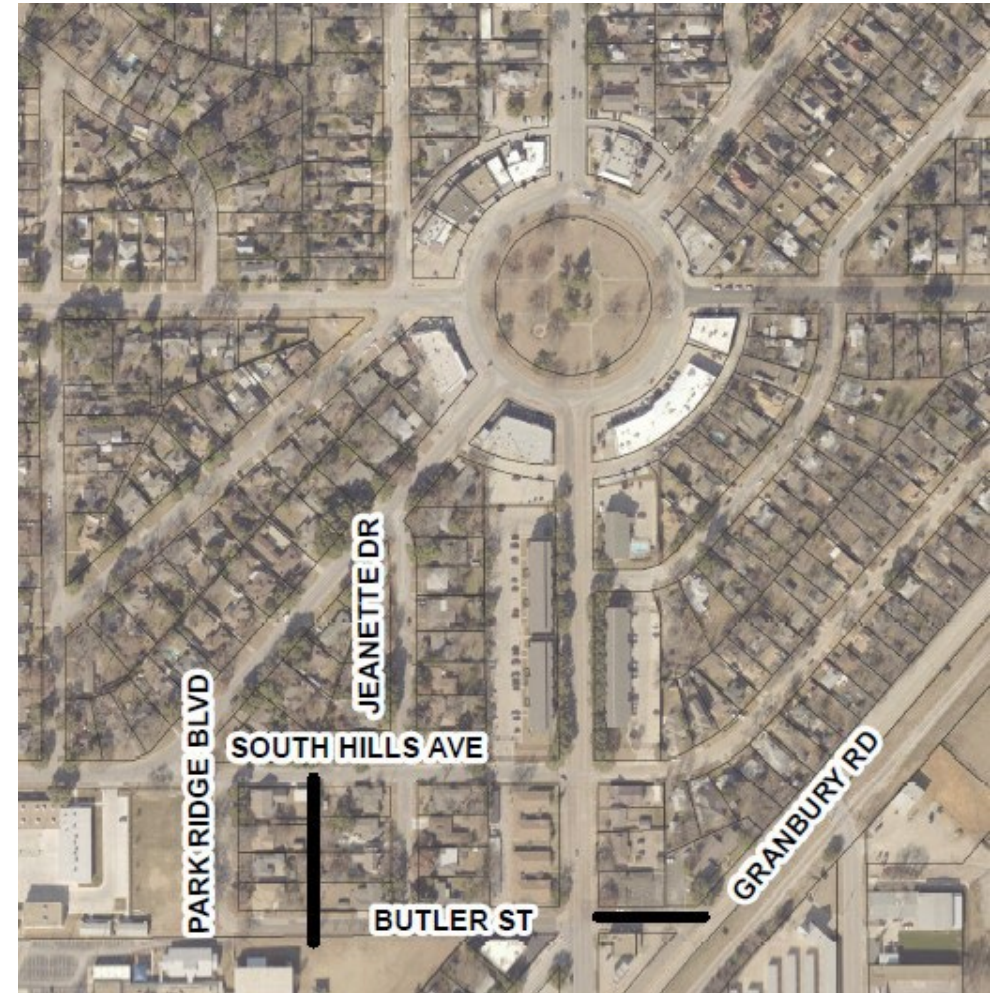


Project Area – Map 3

- Easement between Park Ridge Boulevard and Jeanette Drive from South Hills Avenue to Butler Street (sewer)
- West Butler Street from University Drive to Granbury Road (water and sewer)

Council District 9

Construction will impact the Bluebonnet Hills neighborhood association.



Project Area – Map 4

- Willie Street from Etta Street to Vera Avenue (water and sewer)

Council District 5

Construction will impact the Historic Stop 6 neighborhood association.



Will our water be turned off?

Water will be turned off for 15-30 minutes when service is transferred from the existing line to a temporary water line, and when the service is transferred from the temporary to the new line. These switchovers are done during the day.

The contractor will knock on the door and let customers know when the water will be turned off. The transfer typically takes 30 minutes per house or business.





How does the temporary line impact my home & water bill?

The temporary water line insures that you are not without water during construction. In the summer months the continuous flow keeps the water from becoming stagnant in the above-ground line.

During the winter months, water must be continually flowing through the temporary line to keep the line from freezing. Customers should also keep their faucets dripping.

The bill for your water usage while you are on the temporary line is based on an average of the previous months' usage.

Will you need access to our property?

Construction will be in the streets and easements. If Fort Worth Water needs access to your property we will contact you. If an easement is needed for your property a city land agent will be contacting you soon.

Will sewer service be disrupted?

Sanitary sewer service will not be interrupted. New sewer cleanouts will be installed at the property line. The sewer cleanout provides crews easy access if a backup or blockage occurs.





Will I have access to my driveway during construction?

An inspector will be assigned to the project when we are ready to start construction.

The inspector and the contractor will work with residents who need driveway access during active construction hours.

Will the city's trash truck be able to pick up my trash and recycling during construction?

If your side of the street is closed on your scheduled trash collection day, the contractor will take your trash and recycling carts to the opposite side of the street so the trash collection vehicle can pick it up.



Will there be lane closures during construction?



Yes.

Signs will be posted to alert motorists.

What are the construction hours?

The hours of construction are
7 am to 6 pm, Monday-Friday . . .

And, if requested by the
contractor, 9 am to 4 pm (or 5 pm)
- on Saturdays.



Timeline

This project is still in the design phase. We expect to finalize the design, advertise for bids, and select a contractor in early 2024.

We will host a community construction meeting after we have a contractor on board - and before construction starts.



Where can I get more information?

- Go to www.FortWorthTexas.gov and type in the project number – 2725- in the search bar on the home page. Westcliff, Como, Bluebonnet and Stop 6 Infrastructure Improvements will pop up.
- To get project page updates, scroll down to the bottom of the project page and click on “Subscribe to this page.”
- The link to the project summary/frequently asked questions will be linked to this project page.

How do I report an emergency or non-emergency?

Emergencies

Water main breaks, sewer backups - 24 hours a day

817-392-4477, Select Option 1

Water Call Center (non-emergency)

- 7 am to 7 pm Monday through Friday
- 817-392-4477
- Closed City holidays



Download the MyFW app from the App Store or Google Play. You can report sewer overflows, leaks and water main breaks, missing or broken meter lids, water theft, water violations, no water service, water pressure issues and other sewer concerns.

Your project team includes:

Project Manager: Zak Zakersalehi

- 817-392-8695; Abolfazl.Zakersalehi@fortworthtexas.gov

Engineering Design Consultant: CP&Y

- Randy Bush and Beth Kochur

Thank you

