

Summer Creek Drive and Southside Flow Transfer Station virtual community design meeting

August 10, 2022

Please post questions in the Chat. When the presentation is done we will answer those first, then we will take questions from call-in users, one at a time.

This presentation is being recorded.

Agenda

- Introductions
- Project Overview
- Project Area
- Frequently Asked Questions

Pictured: Transfer Station



Your project team includes. . .

Project Manager: Suzy Abbe

- 817-392-8209; Suzanne.Abbe@FortWorthTexas.gov

Engineering Design Consultant: Freese and Nichols

- Olivia Kerss

Why are we doing this project?

This project is one of two in this area that will supply higher pressure water to new development in the southern part of the City. This will increase the level of service to customers.

Part 1 is the Southside IV Pump Station and Hydropneumatic Tank which is under construction at 5800 Stewart Feltz Road. The project page link to Part 1 is <https://www.fortworthtexas.gov/projects/cfw-southsideIV-pump-station-and-hydropneumatic-tank>.

This transfer station project – Part 2 - will support the operation of the new pump station and will transition existing homes and businesses in the area to the new pressure plane created by Part 1. This Summer Creek Drive and Southside IV Flow Transfer Station project includes new water lines, valve improvements and a new flow transfer station.

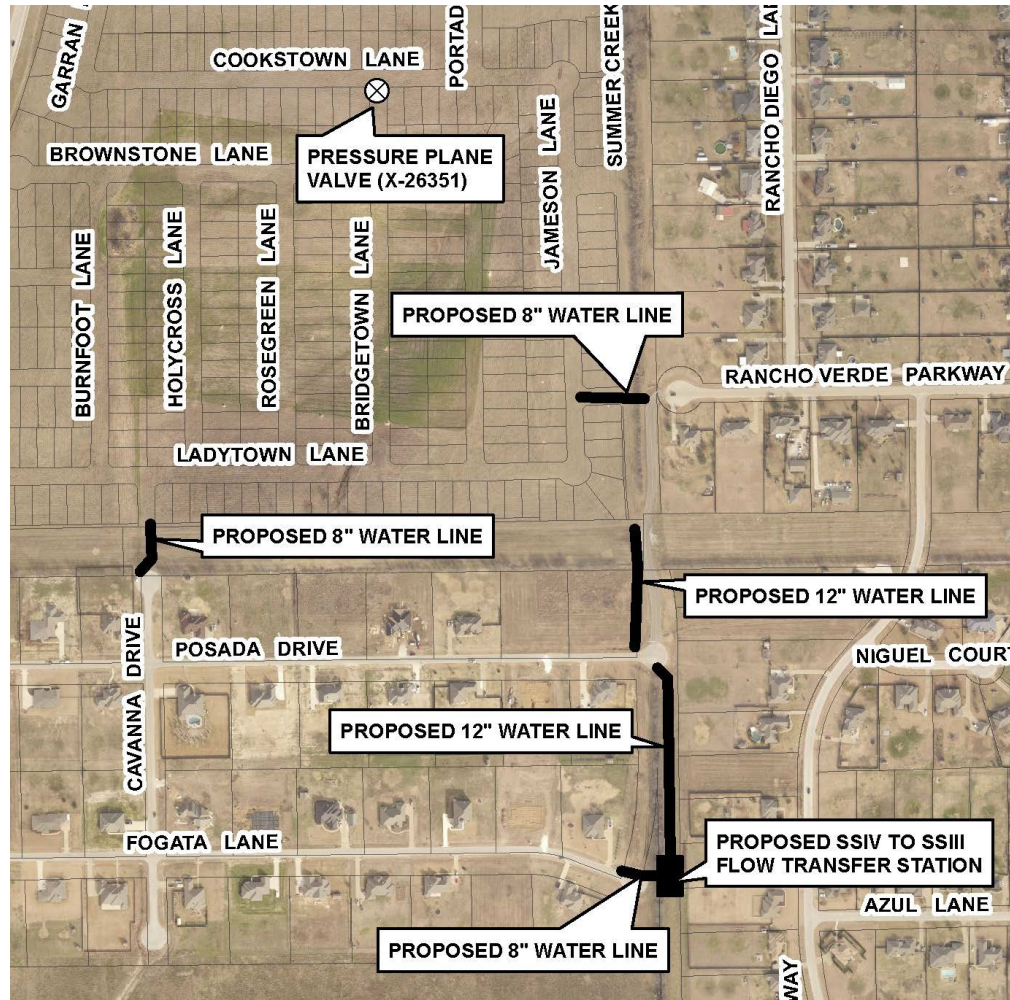
Project Area

This project area is bound by Cookstown Lane to the north, Summer Creek Drive to the east, Fogata Lane to the south, and Cavanna Drive and Chisholm Trail Parkway to the west.

Summer Creek Middle School is three blocks to the north of Cookstown.

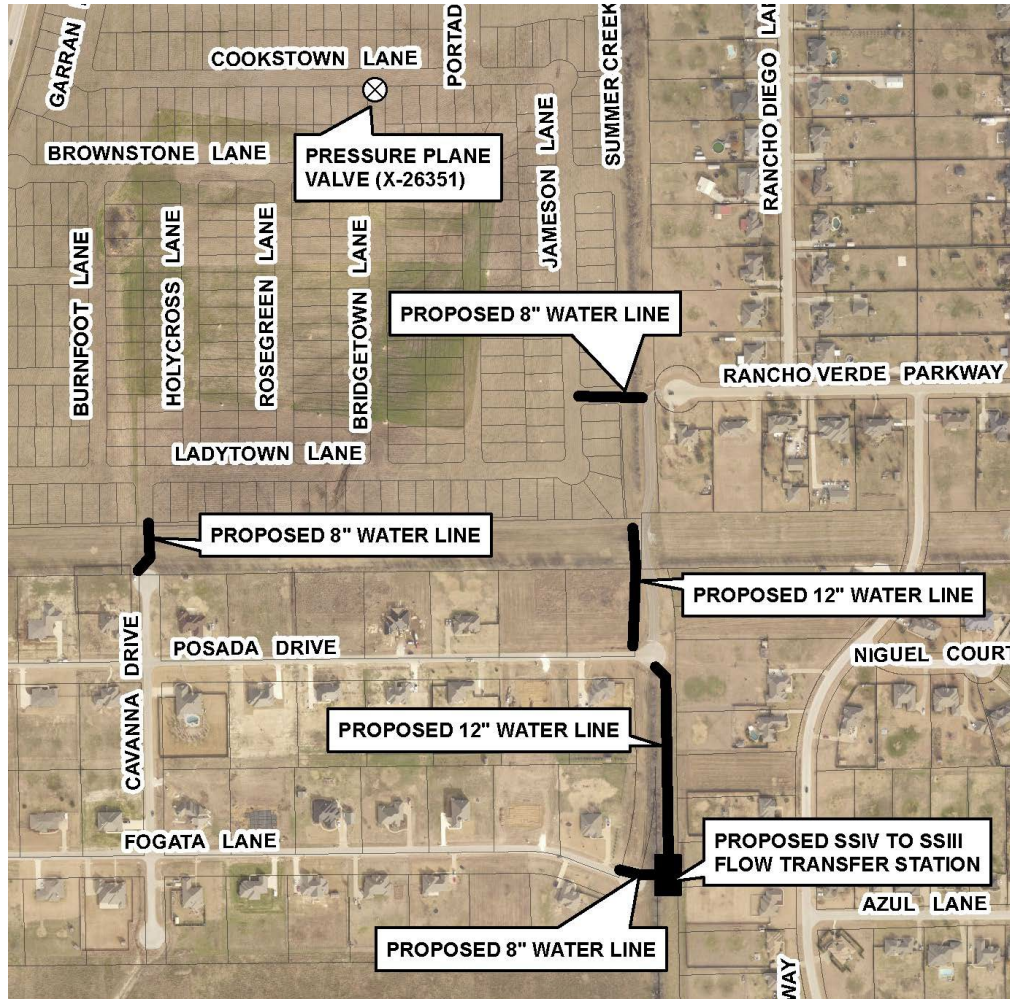
This project is in Council District 6 and will impact the Panther Heights neighborhood association.





Project Area

The design phase calls for a pressure plane valve near Cookstown Lane, as well as five proposed water lines and connections within the project's boundaries.

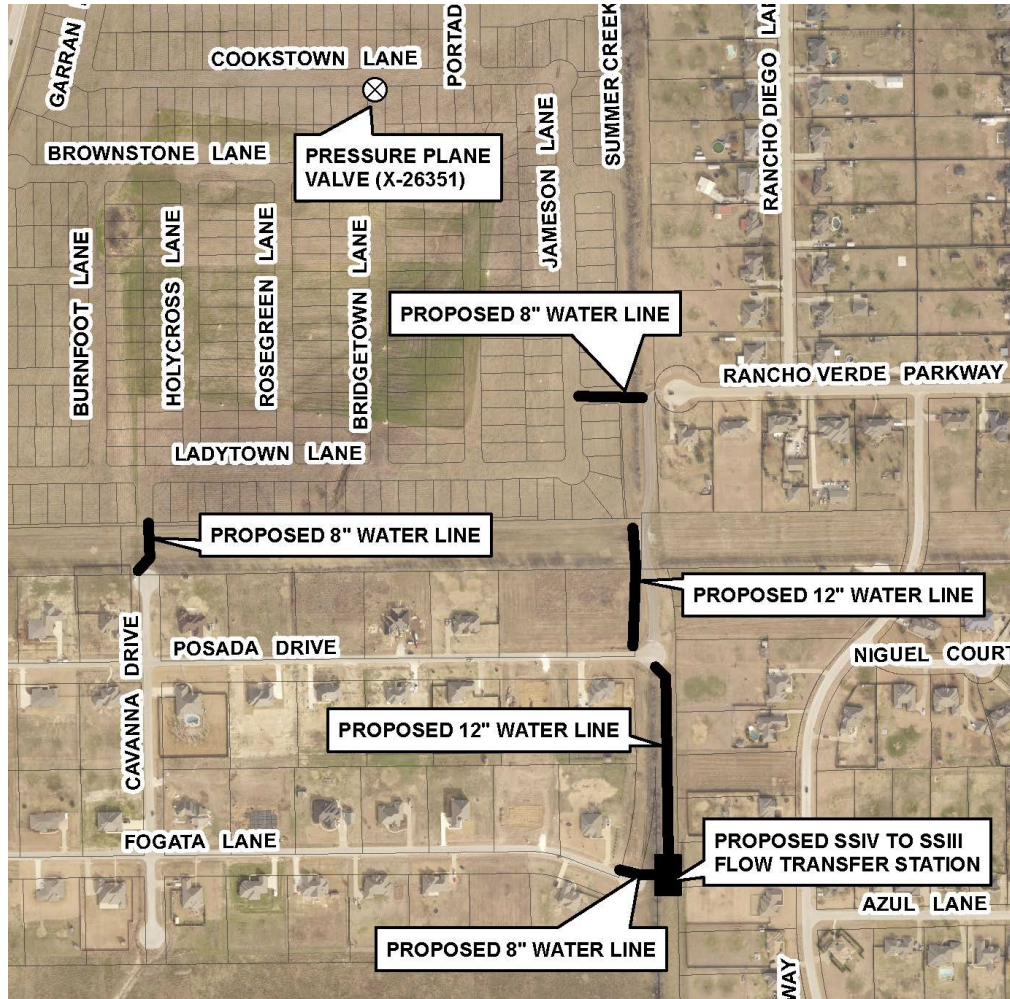


Project Area

Cookstown Lane (pressure plane valve)

Rancho Verde Parkway from Jameson Lane to 150 feet east (proposed 8-inch in diameter water line)

Cavanna Drive from the north end of the street to 500 feet north through the Oncor right-of-way (proposed 8-inch in diameter water line)



Project Area

Summer Creek Drive right-of-way from Posada Lane to 350 feet north to the Oncor right-of-way (proposed 12-inch in diameter water line)

Summer Creek Drive right-of-way from Fogata Lane to 650 feet north to Posada Lane (proposed 12-inch in diameter water line)

Fogata Lane from the east dead end to 150 feet east (proposed 8-inch in diameter water line)

What is a pressure plane?

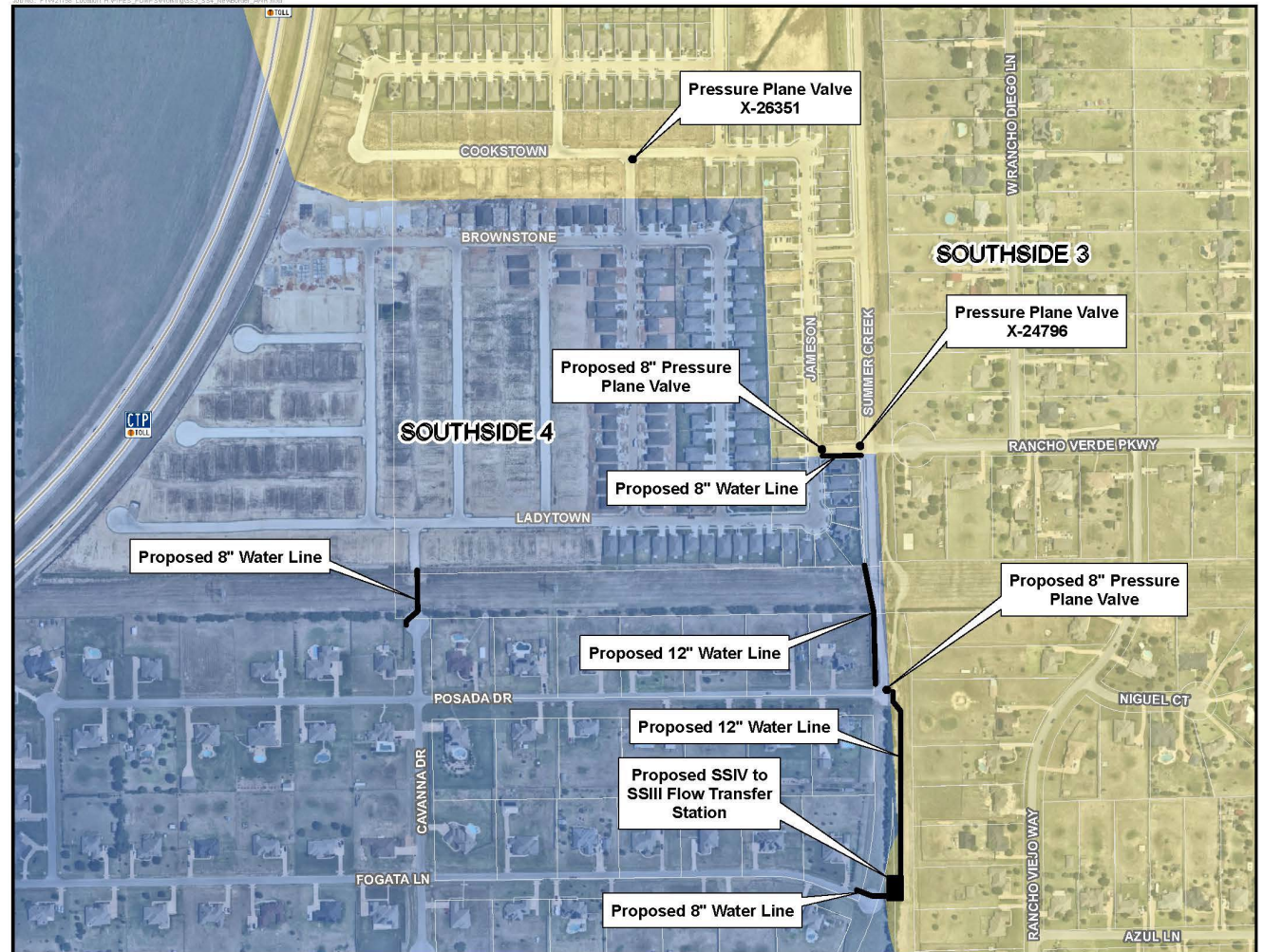
A pressure plane is an area of the City that operates within a certain elevation range to maintain a constant water pressure.

This project is in the Southside III pressure plane and the Southside IV pressure plane.

Project Area

The project will transition parts of the Panther Heights neighborhood association area and McPherson Village development from the Southside III pressure plane to the Southside IV pressure plane.

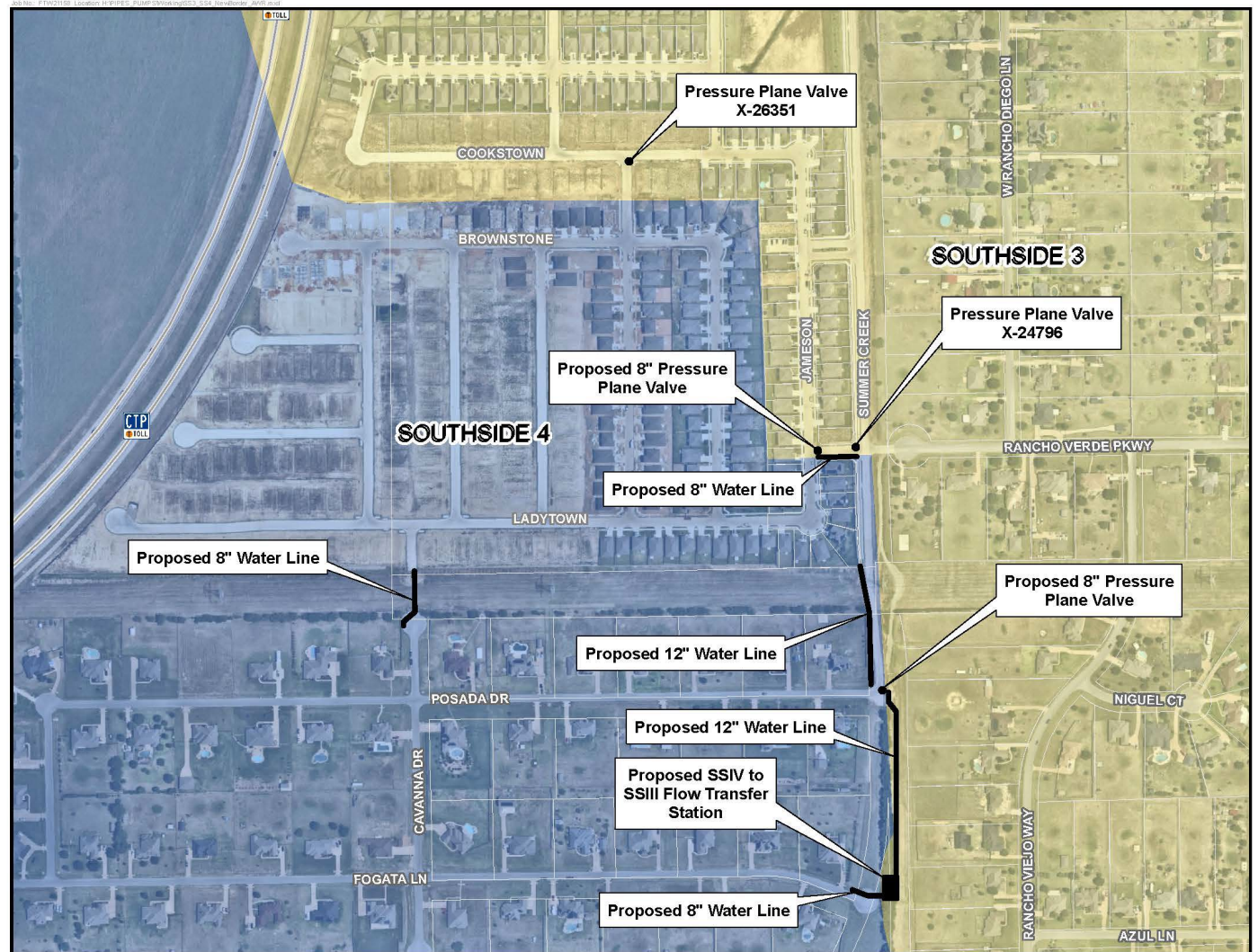
Areas transitioned to the new pressure plane will see an increase in water pressure.



How much will the pressure change?

The water system pressures are expected to increase 10-15 psi in the existing development areas.

All of the Southside 4 pressure plane will see pressures ranging from 40-80 psi, which is the typical service range in Fort Worth.





Flow Transfer Station

The flow transfer station will be located in the Summer Creek right-of-way in a 31-foot by 35-foot area east of Fogata Lane.

The flow transfer station maintains water quality in the area by transferring a continuous flow from the Southside IV plane to the Southside III plane. The flow transfer will keep the water moving and fresh and will help stabilize water pressure in the area.



Booster Pump Station

The Part 1 booster pump station is just south of the Sun Country Elevated tank near the intersection of Stewart Feltz Road and Stewart Feltz Road.

Construction of Part 1 is expected to wrap up by late fall of 2022.

Timeline

This project is still in the design phase. We expect to finalize the design, advertise for bids, and select a contractor by Fall 2023.

We will host a community construction meeting after we have a contractor on board.



Where can I get more information?

Go to www.fortworthtexas.gov, type in the project number – 103116-2 - in the search bar on the home page, then click on “Summer Creek Drive and Southside IV Flow Transfer Station.”

To get project page updates, scroll down to the bottom of the Summer Creek page and click on “Subscribe to this page.”

The link to this meeting video, the project map, and the project summary/frequently asked questions will be linked to this project page.

Contacts

Project Manager: Suzy Abbe

- 817-392-8209
- Suzanne.Abbe@FortWorthTexas.gov

How do I report an emergency or non-emergency?

Emergencies

Water main breaks, sewer backups - 24 hours a day
817-392-4477, Select Option 1

Water Call Center (non-emergency)

7 am to 7 pm Monday through Friday
817-392-4477
Closed City holidays



Download the MyFW app from the App Store or Google Play. You can report sewer overflows, leaks and water main breaks, missing or broken meter lids, water theft, water violations, no water service, water pressure issues and other sewer concerns.

Are there other ways to make a report?

Text HELLO to 817-835-MYFW (6939) and type in one word, like “street light out” and the request will go directly to the specific team or department for a quick response.



Or, go online at:

<https://www.fortworthtexas.gov/departments/communications/customercare>

Scroll down to the Report Online Easily tab. Scroll through the topics and select the one that fits your situation, for example – water pressure issue.

Click on that, type in the street address then follow the prompts.

Thank you



FORT WORTH[®]

