

Summer Creek Drive and Southside IV Flow Transfer Station community design meeting

August 10, 2022, 6 p.m., WebEx virtual meeting

Key Fort Worth Staff

Project Manager: Suzy Abbe

- 817-392-8209; Suzanne.Abbe@fortworthtexas.gov

Tony Sholola, assistant director/Water Capital Delivery

Sally Ellertson, capital project communications/Water Capital Delivery

Engineering Design Consultant: Freese and Nichols

- Olivia Keress

Fort Worth Council District 6

District 6 Councilmember Jared Williams

- District 6 Director Kendyll Locke
- 817-392-8806; District6@FortWorthTexas.gov

122 mailers sent; Panther Heights neighborhood association was notified; 3 attended

Why are we doing this project?

This project is one of two in this area that will supply higher pressure water to new development in the southern part of the City. This will increase the level of service to customers.

Part 1 is the Southside IV Pump Station and Hydropneumatic Tank which is under construction at 5800 Stewart Feltz Road. The project page link to Part 1 is <https://www.fortworthtexas.gov/projects/cfw-southsideIV-pump-station-and-hydropneumatic-tank>.

This transfer station project – Part 2 - will support the operation of the new pump station and will transition existing homes and businesses in the area to the new pressure plane created by Part 1. This Summer Creek Drive and Southside IV Flow Transfer Station project includes new water lines, valve improvements and a new flow transfer station.

Summer Creek Drive and Southside IV Flow Transfer Station community design meeting

August 10, 2022, 6 p.m., WebEx virtual meeting

Project Overview

This project area is bound by Cookstown Lane to the north, Summer Creek Drive to the east, Fogata Lane to the south, and Cavanna Drive and Chisholm Trail Parkway to the west.

Summer Creek Middle School is three blocks to the north of Cookstown.

Who will be impacted?

Residents in the Panther Heights neighborhood association area will be impacted.

Project Area

- Cookstown Lane (pressure plane valve)
- Rancho Verde Parkway from Jameson Lane to 150 feet east (proposed 8-inch in diameter water line)
- Cavanna Drive from the north end of the street to 500 feet north through the Oncor right-of-way (proposed 8-inch in diameter water line)
- Summer Creek Drive right-of-way from Posada Lane to 350 feet north to the Oncor right-of-way (proposed 12-inch in diameter water line)
- Summer Creek Drive right-of-way from Fogata Lane to 650 feet north to Posada Lane (proposed 12-inch in diameter water line)
- Fogata Lane from the east dead end to 150 feet east (proposed 8-inch in diameter water line)

What is a pressure plane?

A pressure plane is an area of the City that operates within a certain elevation range to maintain a constant water pressure.

This project is in the Southside III pressure plane and the Southside IV pressure plane.

The project will transition parts of the Panther Heights neighborhood association area and McPherson Village development from the Southside III pressure plane to the Southside IV pressure plane.

Summer Creek Drive and Southside IV Flow Transfer Station community design meeting

August 10, 2022, 6 p.m., WebEx virtual meeting

How much will the water pressure change?

Areas transitioned to the new pressure plane will see an increase in water pressure. The water system pressures are expected to increase 10-15 psi in the existing development areas.

All of the Southside 4 pressure plane will see pressures ranging from 40-80 psi, which is the typical service range in Fort Worth.

What is a flow transfer station?

The flow transfer station will be located in the Summer Creek right-of-way in a 31-foot by 35-foot area east of Fogata Lane. The flow transfer station maintains water quality in the area by transferring a continuous flow from the Southside IV plane to the Southside III plane. The flow transfer will keep the water moving and fresh and will help stabilize water pressure in the area.

What is the booster pump station?

The Part 1 booster pump station is just south of the Sun Country Elevated tank near the intersection of Stewart Feltz Road and Stewart Feltz Road.

Construction of Part 1 is expected to wrap up by late fall of 2022.

Is all of this area in Pressure Plane III and then with this project it will become Pressure Plane IV?

Part 1 creates the Southside IV pressure plane that doesn't really exist right now. Part 2 extends it to all of the necessary areas. There are currently gaps in the system so we are filling the gaps where there are no water lines. We are looping those water lines in so all of Southside IV is looped together

Summer Creek Drive and Southside IV Flow Transfer Station community design meeting

August 10, 2022, 6 p.m., WebEx virtual meeting

Is the flow transfer station a pressure reducing valve?

That's the type of valve that will be in the transfer station to allow that transfer of flow.

One area that is really congested is the cul de sac at Rancho Verde Parkway where it joins with Summer Creek. There is a crazy amount of traffic going through there. Will there be road closures?

We did try to place the water lines outside of the pavement as much as possible. But that doesn't mean the contractor won't need to close some lanes to fit their equipment in there and to make the connections. We don't anticipate a full road closure but we do anticipate temporary lane closures. McPherson Village is one of those locations. We don't anticipate an impact at the intersection of Rancho Verde and Summer Creek.

Will there be an interruption of water service when you are flushing the hydrants?

The only time that you should see an interruption of service is if a valve can't be operated. But we don't anticipate that.

What is the timeline?

This project is still in the design phase. We expect to finalize the design, advertise for bids, and select a contractor by Fall 2023.

We will host a community construction meeting after we have a contractor on board.

Summer Creek Drive and Southside IV Flow Transfer Station community design meeting

August 10, 2022, 6 p.m., WebEx virtual meeting

Where can I get more information?

Go to www.fortworthtexas.gov, type in the project number – 103116-2 - in the search bar on the home page, and then click on “Summer Creek Drive and Southside IV Flow Transfer Station.”

To get project page updates, scroll down to the bottom of the Summer Creek page and click on “Subscribe to this page.”

The link to this meeting video, the project map, and these project summary/frequently asked questions will be linked to this project page.

How do I report an emergency or non-emergency?

Emergencies

Water main breaks, sewer backups - 24 hours a day

- 817-392-4477, [Select Option 1](#)

Water Call Center (non-emergency)

- 7 am to 7 pm Monday through Friday
- 817-392-4477
- Closed City holidays

Download the MyFW app from the App Store or Google Play. You can report sewer overflows, leaks and water main breaks, missing or broken meter lids, water theft, water violations, no water service, water pressure issues and other sewer concerns.

Summer Creek Drive and Southside IV Flow Transfer Station community design meeting

August 10, 2022, 6 p.m., WebEx virtual meeting

What are the other ways to make a report?

Text HELLO to 817-835-MYFW (6939) and type in a phrase, like “street light out” and the request will go directly to the specific team for a quick response. Or, go online at:

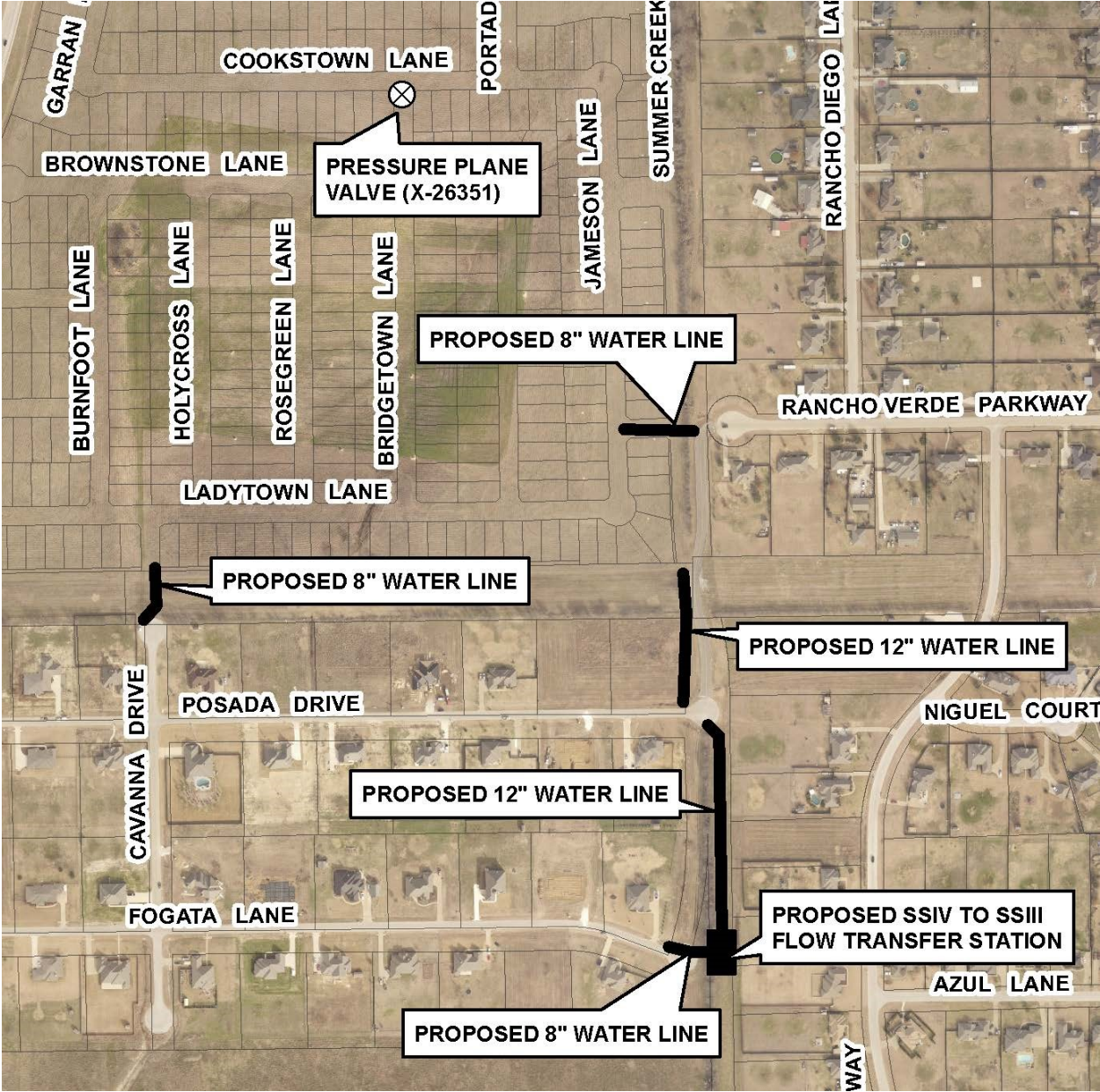
<https://www.fortworthtexas.gov/departments/communications/customercare>

Scroll down to the Report Online Easily tab. Scroll through the topics and select the one that fits your situation, for example – water pressure issue.

Click on that, type in the street address then follow the prompts.

Summer Creek Drive and Southside IV Flow Transfer Station community design meeting

August 10, 2022, 6 p.m., WebEx virtual meeting



Summer Creek Drive and Southside IV Flow Transfer Station community design meeting

August 10, 2022, 6 p.m., WebEx virtual meeting

