

Wedgwood and South Hills Water and Sewer Improvements community design meeting

Thursday, August 3, 2023

6 p.m.

WebEx virtual meeting

Agenda

- Introductions
- Project Overview
- Project Area
- Frequently Asked Questions
- Timeline



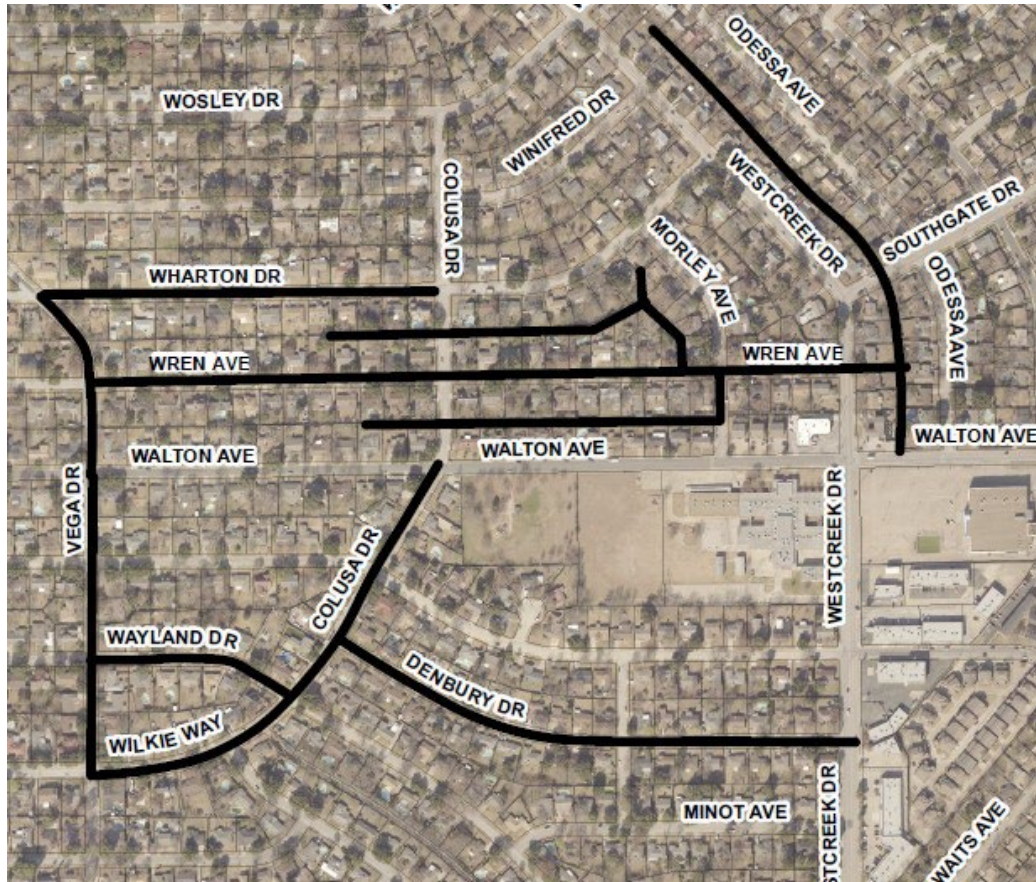
Your project team includes:

Project Manager: Brenda Oropeza

- 817-392-8271; Brenda.Oropeza@FortWorthTexas.gov

Engineering Design Consultant

- Dal-Tech – Getsy Suthan



Why are we doing this project?

Fort Worth prioritizes replacing water and sewer lines that have a high risk of failure. Risk of failure is determined based on available data which includes:

- Water main break history
- Leak history
- CCTV (closed circuit TV) inspection
- Age of the line
- Line material
- Lead service lines
- Cast iron lines

What drives this project?

This project will replace cast iron water lines on:

- Wharton Drive
- Vega Drive
- Wilkie Way
- Wayland Drive
- Wren Avenue
- Denbury Drive
- And, Colusa Drive

Some of the sewer lines in this project date back to the 1950s and 1960s.



Project Scope

This capital improvement project is predominantly residential, but construction may impact the:

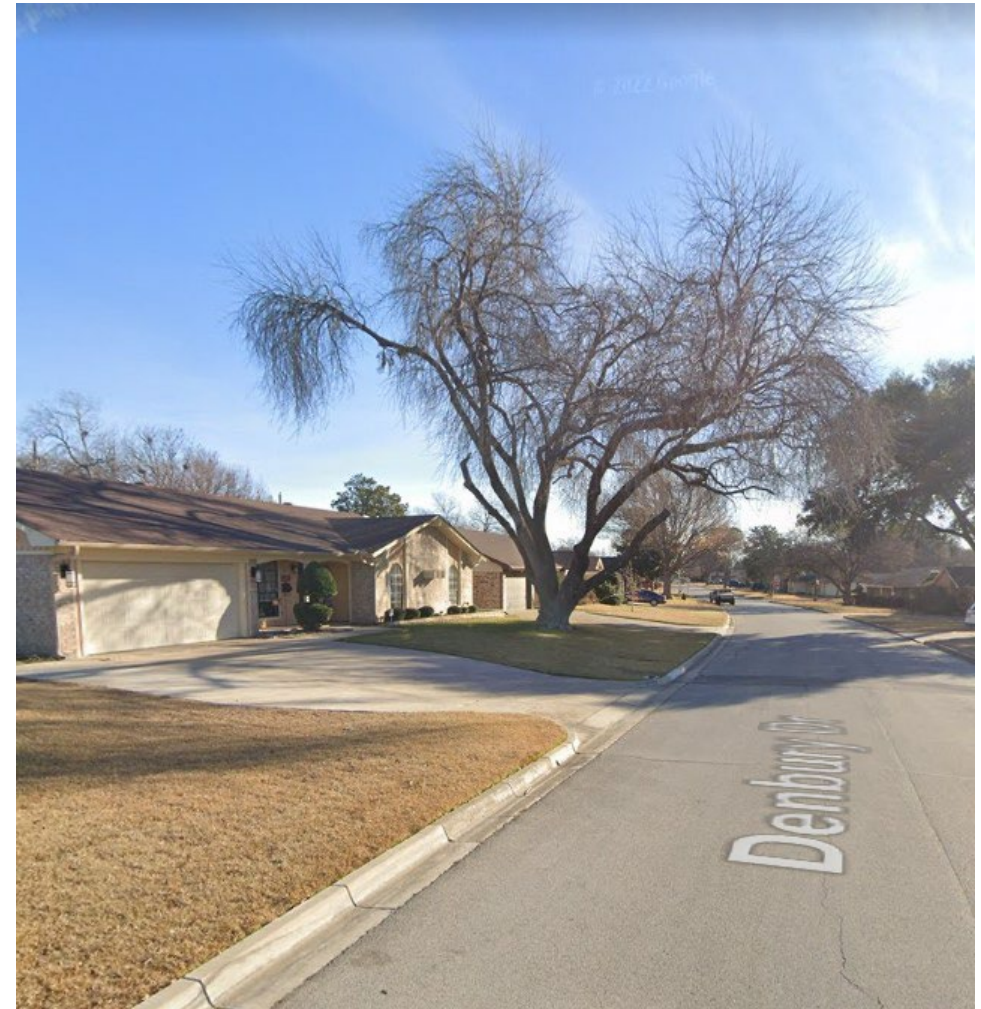
- Little People Park at Walton and Colusa Drive
- Westcreek Elementary School at Westcreek Drive at Walton Avenue
- And Harmony Science Academy - Fort Worth at Odessa Avenue and Walton Avenue.



What are the boundaries of the City's project?

Water mains and sanitary sewer mains will be replaced in eight streets and in five easements in a project area that is:

- South of SW Loop 820
- West of Odessa Avenue
- North of Wilkie Way and Denbury Drive
- And, east of Vega Drive



Project Area

- Wharton Drive from Vega Drive to Colusa Drive (water and sewer)
- Wren Avenue from Vega Drive to Westcreek Drive (water and sewer)
- Wayland Drive from Vega Drive to Colusa Drive (water and sewer)
- Wilkie Way from Vega Drive to Wayland Drive (water and sewer)



Project Area

- Vega Drive from Wharton Drive to Wilkie Way (water and sewer)
- Colusa Drive from Walton Avenue to Wayland Drive (water and sewer)
- Denbury Drive from Colusa Drive to Westcreek Drive (water and sewer)
- Morley Avenue from Wren Avenue to 150 feet south (sewer)



Project Area

- Easement between Wharton Drive and Wren Avenue from 392 feet west of Colusa Drive to 725 feet east of Colusa Drive (sewer)
- Easement between Morley Avenue and Colusa Drive from 170 feet south of the Morley Avenue and Wharton Drive intersection to 415 feet south (sewer)
- Easement between Wren Avenue and Walton Avenue from 295 feet west of Colusa Drive to Morley Avenue (sewer)



Project Area

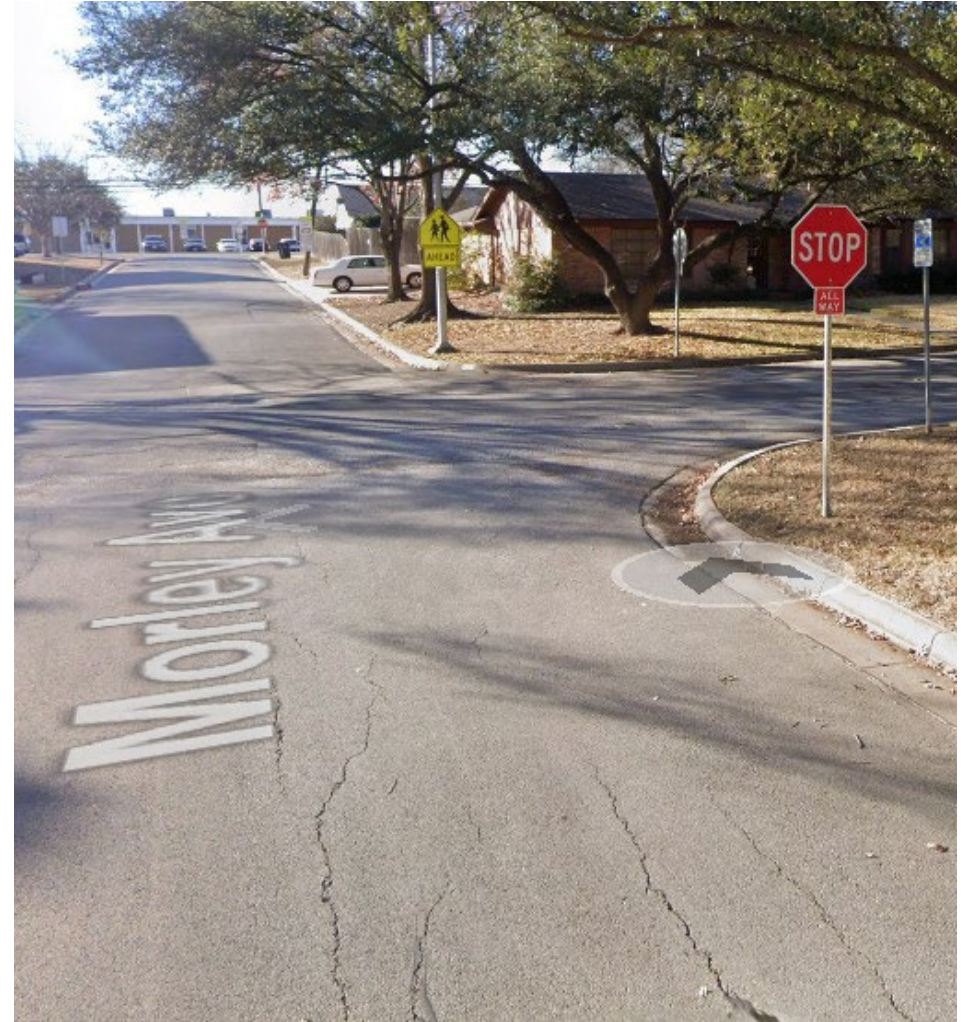
- Easement between Odessa Avenue and Westcreek Drive from Walton Avenue to 215 feet south of Wosley Drive (sewer)
- Easement between Southgate Drive and Walton Avenue from Westcreek Drive to 180 feet east of Westcreek Drive (sewer)



What part of Fort Worth does this impact?

This capital improvement project is in Fort Worth Council District 9.

Construction will impact the Wedgwood East neighborhood association and the South Hills South neighborhood.



Will our water be turned off?

Water will be turned off for 15-30 minutes when service is transferred from the existing line to a temporary water line, and when the service is transferred from the temporary to the new line. These switchovers are done during the day.

The contractor will knock on the door and let customers know when the water will be turned off. The transfer typically takes 30 minutes per house or business.



How does the temporary line impact my home and water bill?



The temporary water line insures that you are not without water during construction. In the summer months the continuous flow keeps the water from becoming stagnant in the above-ground line.

During the winter months, water must be continually flowing through the temporary line to keep the line from freezing. Customers should also keep their faucets dripping.

The bill for your water usage while you are on the temporary line is based on an average of the previous months' usage.

Will you need access to our property during construction?

Construction will be in the streets and easements. If Fort Worth Water needs access to your property we will contact you. If an easement is needed for your property a city land agent will be contacting you soon.

Will sewer service be disrupted?

Sanitary sewer service will not be interrupted. New sewer cleanouts will be installed at the property or easement line. The sewer cleanout provides crews easy access if a backup or blockage occurs.





Will I have access to my driveway during construction?

The inspector and the contractor will work with businesses and residences who need driveway access during active construction hours.

How are you going to coordinate traffic during construction?

We will have a traffic control plan in place before the contractor starts work.



Will the city's trash truck pick up my trash and recycling?

If your side of the street is closed on your scheduled trash collection day, the contractor will take your trash and recycling carts to the opposite side of the street so the trash collection vehicle can pick it up.



Will there be lane closures during construction?



Yes.

Signs will be posted to alert motorists.

What are the construction hours?

The hours of construction are 7 am to 6 pm, Monday-Friday . . .

And, if requested by the contractor, 9 am to 4 pm or 5 pm - on Saturdays.



Timeline

This project is in the design phase. We will have more information after the contractor is approved by the Fort Worth City Council.

We host a pre-construction meeting with the contractor to set the start date for construction and, to create a schedule for the streets that will be impacted.

We will host a community construction meeting before the contractor breaks ground.



Where can I get more information?

- Go to www.FortWorthTexas.gov and type in the project number – 103619 - in the search bar on the home page. Wedgwood and South Hills Water and Sewer Improvements will pop up.
- To get project page updates, scroll down to the bottom of the project page and click on “Subscribe to this page.”
- The link to a PDF of this PowerPoint and a link to the YouTube video of this presentation will be posted to this project page.

How do I report an emergency or non-emergency?

Emergencies

Water main breaks, sewer backups - 24 hours a day

817-392-4477, Select Option 1

Water Call Center (non-emergency)

- 7 am to 7 pm Monday through Friday
- 817-392-4477
- Closed City holidays



Download the MyFW app from the App Store or Google Play. You can report sewer overflows, leaks and water main breaks, missing or broken meter lids, water theft, water violations, no water service, water pressure issues and other sewer concerns.

Your project team includes:

Project Manager: Brenda Oropeza

- 817-392-8271; Brenda.Oropeza@FortWorthTexas.gov

Engineering Design Consultant

- Dal-Tech – Getsy Suthan

Thank you

