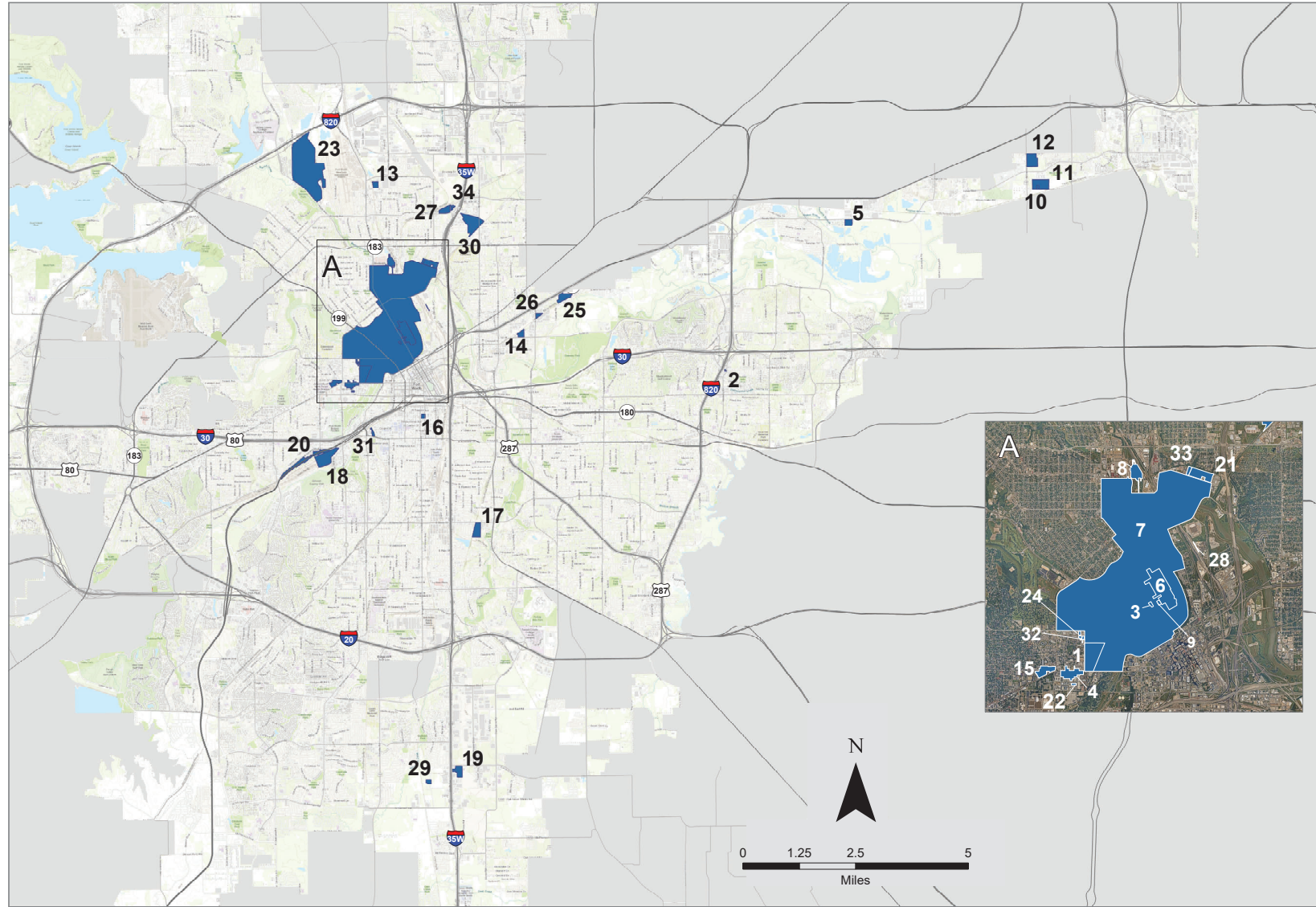


# Municipal Setting Designations

An MSD is an official state designation certifying that the groundwater on a property is not to be used as potable (drinking) water. This applies to a small quantity of groundwater on the property that doesn't come into contact with people or wildlife, and which does not flow into deep aquifers. Contaminated groundwater can be an impediment to development of properties, because it can be very costly and time consuming to remediate it in order to bring it to the standard of drinking water. Since this contaminated groundwater is not intended for consumption or other use, leaving it in its current state does not pose a threat to human health.  
<https://www.fortworthtexas.gov/departments/environmental-services/environmental-quality/landquality/msd>



April 2023 | Base Date: City of Fort Worth GIS, ESRI Topography

ID	Description	Acreage	ID	Description	Acreage	ID	Description	Acreage
1	Montgomery Plaza	46.19	13	Radio Shack Corporation	9.16	24	White Settlement	2.12
2	Brentwood Stair Shopping Center	0.92	14	Bobby Cox Companies	11.98	25	Lennox	24.70
3	Houston Street	1.60	15	Museum Place Holdings	11.00	26	Panther Chemical	5.65
4	Acme Brick	20.00	16	Rodanco Partners	4.39	27	Long Avenue	21.17
5	Synstation, LP	13.69	17	S&B Technical Products	28.00	28	Swift Street	0.56
6	BLG Northside Development	70.86	18	UPRR Centennial Rail Yard	67.00	29	West Risinger	6.61
7	Trinity Uptown	1964.00	19	Everman Parkway	23.60	30	Sylvania Business Park	70.70
8	Bunge Oils	18.00	20	Vickery Corridor	48.98	31	Cambria Hotels	2.46
9	Drake Realty	1.50	21	Chevron	22.49	32	The Foundry AP FW	1.37
10	Sun Coast Resources	2.59	22	TLC Bledsoe	1.10	33	BIP Brennan	3.39
11	Direct Fuels	46.00	23	Quarry Falls	519.13	34	Kelli Court	3.62
12	Goodrich Corporation	41.03						

This map was solely created as a graphic representation for use by the City of Fort Worth. The City of Fort Worth assumes no responsibility for its content or accuracy unless expressly stated otherwise in writing. Reproduction of this map without the prior written permission of the City of Fort Worth is strictly prohibited, and is a violation of copyright law.