

North Side – Menefee Avenue Area- Water and Sewer Improvements community design meeting

Thursday, August 8, 2024 - 6 p.m.

North Tri-Ethnic Community Center, 2950 Roosevelt Avenue

Agenda

- Introductions
- Project Overview
- Project Area
- Frequently Asked Questions
- Timeline



Your project team includes:

Project Manager: Clayton Torrance

- 817-392-8528; Clayton.Torrance@FortWorthTexas.gov

Engineering Design Consultant

- RLG Inc. – Brent Lewis

What are the project boundaries:

Existing water and sanitary sewer mains will be replaced in boundaries that include:

- West Long Avenue to the northwest
- Azle Avenue to the northeast
- Ephriham Avenue to the southeast
- And, Jacksboro Highway and the City of River Oaks to the southwest.

Why is Fort Worth Water doing this project?

Fort Worth prioritizes water and sewer line replacements based on available data:

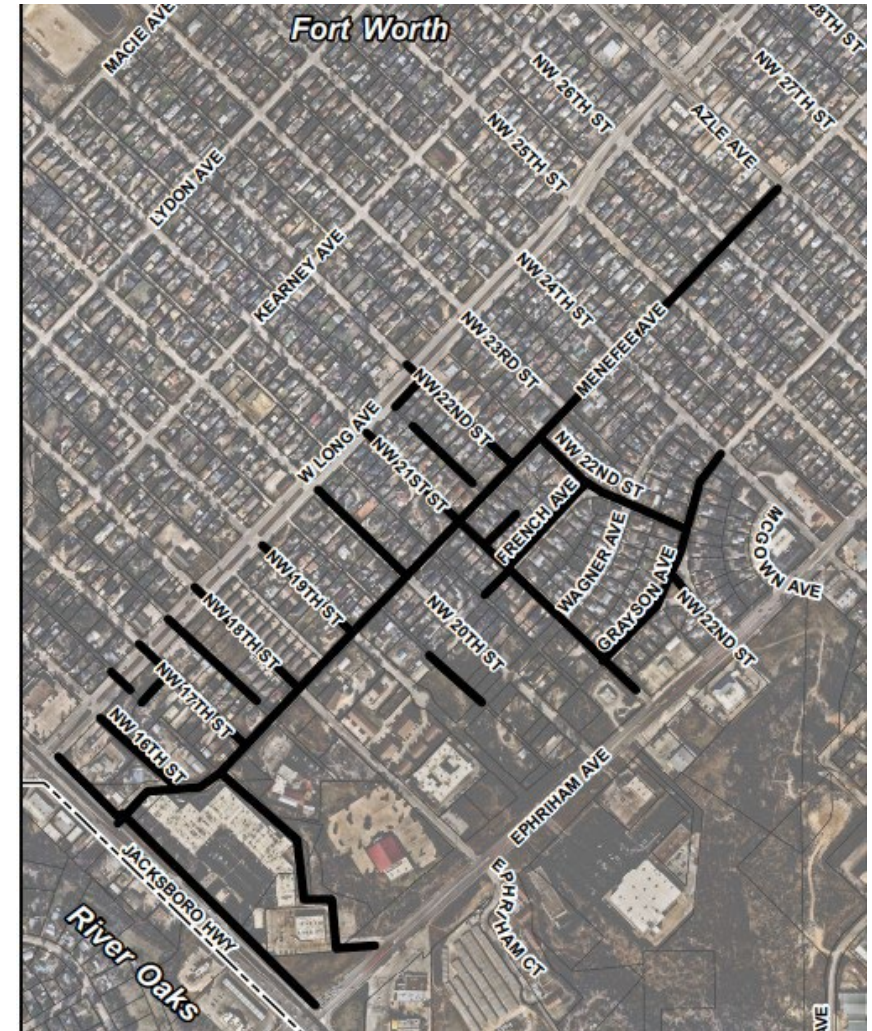
- Water main break history
- Leak history
- CCTV (closed circuit TV) inspection
- Age of the line
- Line material
- Lead service lines
- Cast iron lines

Project Scope

Existing water and sanitary sewer mains will be replaced in streets, easements and alleys.

These lines were selected because the water lines are made of cast iron and the sewer lines are aging and deteriorating. The water lines and sewer lines date back to the 1950s and 1960s.

This Fort Worth Water capital improvement project is in Fort Worth Council District 2.



Cast iron water mains will be replaced in:

Menefee Avenue

Jacksboro Highway

NW 16 Street and NW 17th Street

NW 18th Street and NW 19th Street

NW 21st Street and NW 22nd Street

And, Grayson Avenue



Why is Fort Worth water replacing cast iron water mains?



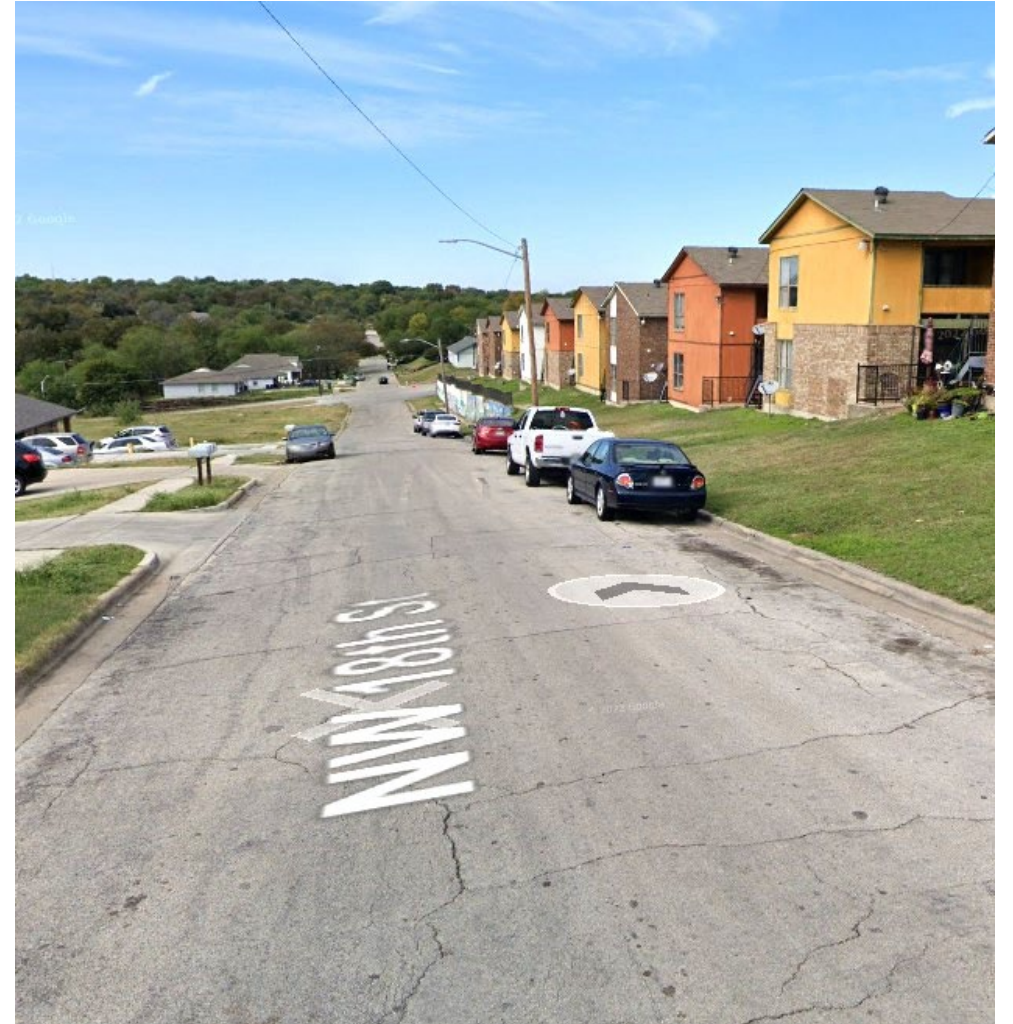
To address frequent main breaks, Fort Worth Water management has committed to replacing a minimum of 20 miles of cast iron pipe every year.

Currently, there are 55 miles of cast iron mains at various stages of design for replacement in fiscal year 2024 and beyond.

Water and Sewer Mains will be replaced in . . .

- NW 17th Street from West Long Avenue to Menefee Avenue
- NW 18th Street from West Long Avenue to Menefee Avenue
- NW 21st Street from West Long Avenue to Ephriham Avenue

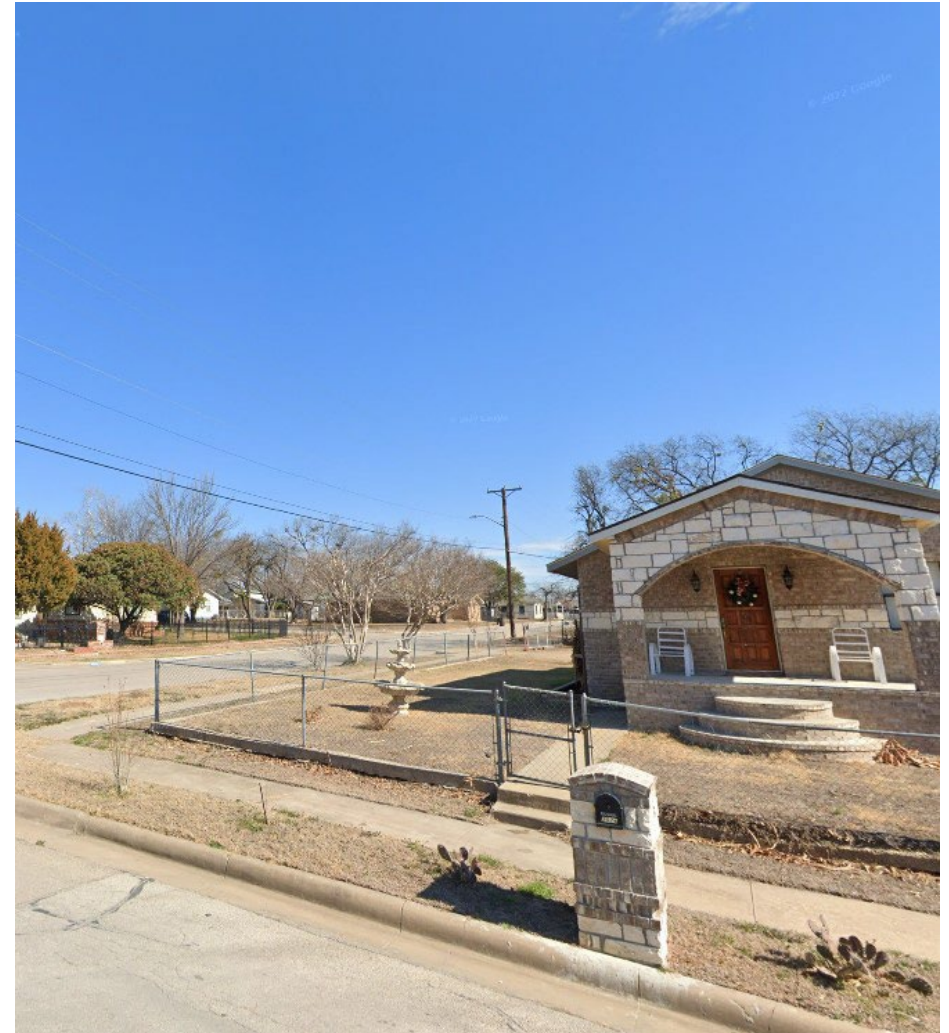
Pictured: NW 18th Street



Water and Sewer Mains will be replaced in . . .

- NW 22nd Street from West Long Avenue to Menefee Avenue
- NW 22nd Street from Menefee Avenue to Grayson Avenue
- Grayson Avenue from NW 21st Street to NW 24th Street

Pictured: Menefee Avenue at NW 22nd Street





Water main replacements

- Jacksboro Highway/Hwy 199 from West Long Avenue to Ephriham Avenue
- Menefee Avenue from Jacksboro Highway/Hwy 199 to Azle Avenue
- NW 16th Street from West Long Avenue to Menefee Avenue
- Easement east of Jacksboro Highway/Hwy 199 from Menefee Avenue to Ephriham Avenue (*pictured*)

Water main replacements

- NW 19th Street from West Long Avenue to Menefee Avenue
- NW 22nd Street from West Long Avenue to Menefee Avenue
- NW 22nd Street from Grayson Avenue to Ephriham Avenue.

Pictured: NW 19th Street at Menefee Avenue



Sewer main replacements

- French Avenue from 208 feet south of the French Avenue/NW 21st Street intersection to NW 22nd Street
- West Long Avenue from NW 22nd Street then south 180 feet
- West Long Avenue from the west right-of-way of West Long Avenue to the east right-of-way line of West Long Avenue

Pictured: French Avenue at NW 22nd Street



Sewer main replacements

- Easement between Menefee Avenue and French Avenue from NW 21st Street, then north 235 feet
- Easement between West Long Avenue and Menefee Avenue from 84 feet east of the West Long Avenue/NW 17th Street intersection then, to the south 174 feet
- Alley between NW 17th Street and NW 18th Street from West Long Avenue, then 546 feet south of West Long Avenue
- *Pictured: Alley between NW 18th and NW 17th*



Sewer main replacements

- Alley between NW 19th Street and NW 20th Street from 335 feet south, and 168 feet west, of the Menefee Avenue/NW 21st intersection, then south 334 feet
- Alley between NW 21st Street and NW 22nd Street from 111 feet south and 180 feet west of the West Long Avenue/NW 22nd Street intersection, then south 396 feet
- Alley between NW 22nd Street and NW 23rd Street from the intersection of NW 22nd Street and Menefee Avenue, then north 210 feet



What will be impacted once construction begins?



This Fort Worth Water capital improvement project area is a mixture of homes, apartment complexes and healthcare facilities.

Sam Rosen Elementary and North Side High School are less than a mile east of the project area. The Fort Worth school district, Lake Worth school district and Castleberry school district will be impacted during construction.

Customers in the Far Greater Northside Historical neighborhood association area and the Inter-District 2 Alliance area will be impacted.

Pictured: North Side High School

Will you need access to our property during construction?

If Fort Worth Water needs access to your property we will contact you. If an easement is needed for your property a city land agent will be contacting you soon.

Will sewer service be disrupted?

Sanitary sewer service will not be interrupted. New sewer cleanouts will be installed at the property or easement line. The sewer cleanout provides crews easy access if a backup or blockage occurs.





Will our water be turned off?

Water will be turned off for 15-30 minutes when service is transferred from the existing line to a temporary water line, and when the service is transferred from the temporary to the new line.

These switchovers are done during the day.

The contractor will knock on the door and let customers know when the water will be turned off. The transfer typically takes 30 minutes per house or business.

Do you replace the water service line up to my house?

We replace the City-owned service line to the property line. We also replace the water meter and meter box and will repair impacted areas on your property.

We do not replace the water line from the water meter to your home or business.

The service line from the water meter to your home or business is considered private plumbing and, in the event of a leak, repairs need to be done by a licensed plumber at the homeowners' expense.





Will we have access to our driveways during construction?

When we get to the construction phase, the inspector and the contractor will work with Fort Worth Water customers who need driveway access during active construction hours.

Will the city's trash truck pick up my trash and recycling?

If your side of the street is closed on your scheduled trash collection day, the contractor will take your trash and recycling carts to the opposite side of the street so the trash collection vehicle can pick it up.



Will there be lane closures during construction?



Yes.

Signs will be posted to alert motorists.

Timeline

This project is in the design phase. We will have more information after the contractor is approved by the Fort Worth City Council.

We host a pre-construction meeting with the contractor to set the start date for construction and, to create a schedule for the streets that will be impacted.

We will host a community construction meeting before the contractor breaks ground.



Where can I get more information?

- Go to www.FortWorthTexas.gov and type in the project number – 104836 - in the search bar on the home page. North Side - Menefee Avenue Area - Water & Sewer Improvements will pop up.
- To get project page updates, scroll down to the bottom of the project page and click on “Subscribe to this page.”
- The link to a PDF of this PowerPoint will be posted to this project page.

How do I report an emergency or non-emergency?

Emergencies

- Water main breaks, sewer backups - 24 hours a day
- 817-392-4477, [Select Option 1](#)

Water Call Center (non-emergency)

- 7 am to 7 pm Monday through Friday
- 817-392-4477
- Closed City holidays



Download the MyFW app from the App Store or Google Play. You can report sewer overflows, leaks and water main breaks, missing or broken meter lids, water theft, water violations, no water service, water pressure issues and other sewer concerns.

Your project team includes:

Project Manager: Clayton Torrance

- 817-392-8528; Clayton.Torrance@FortWorthTexas.gov

Engineering Design Consultant

- RLG Inc. – Brent Lewis

Thank you



FORT WORTH[®]

