



Innovative approaches
Practical results
Outstanding service

Water & Wastewater Impact Fee Update

EXHIBIT C: Water Service Area Water Facilities 2017-2037

Prepared for:

City of Fort Worth Water Department



FREESE AND NICHOLS, INC.
4055 International Plaza, Suite 200
Fort Worth, Texas 76109
817-735-7300

FTW16125

October 07, 2016

Water & Wastewater Impact Fee Update

Prepared for:

City of Fort Worth Water Department



Jessica L. Brown
10/7/16
FREESE AND NICHOLS, INC.
TEXAS REGISTERED
ENGINEERING FIRM
F-2144



Mazen H. Kawasmi
10/7/16
FREESE AND NICHOLS, INC.
TEXAS REGISTERED
ENGINEERING FIRM
F-2144



Andrew S. Franko
10/7/16
FREESE AND NICHOLS, INC.
TEXAS REGISTERED
ENGINEERING FIRM
F-2144










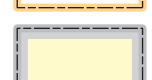


Prepared by:

FREESE AND NICHOLS, INC.
4055 International Plaza, Suite 200
Fort Worth, Texas 76109
817-735-7300

FTW16125

EXHIBIT C FIGURE A-1 CITY OF FORT WORTH WATER SERVICE AREAS

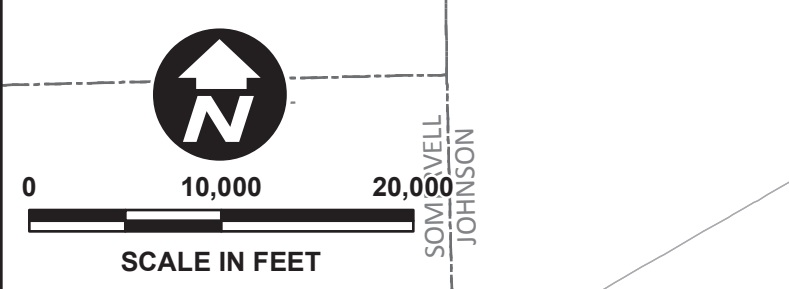
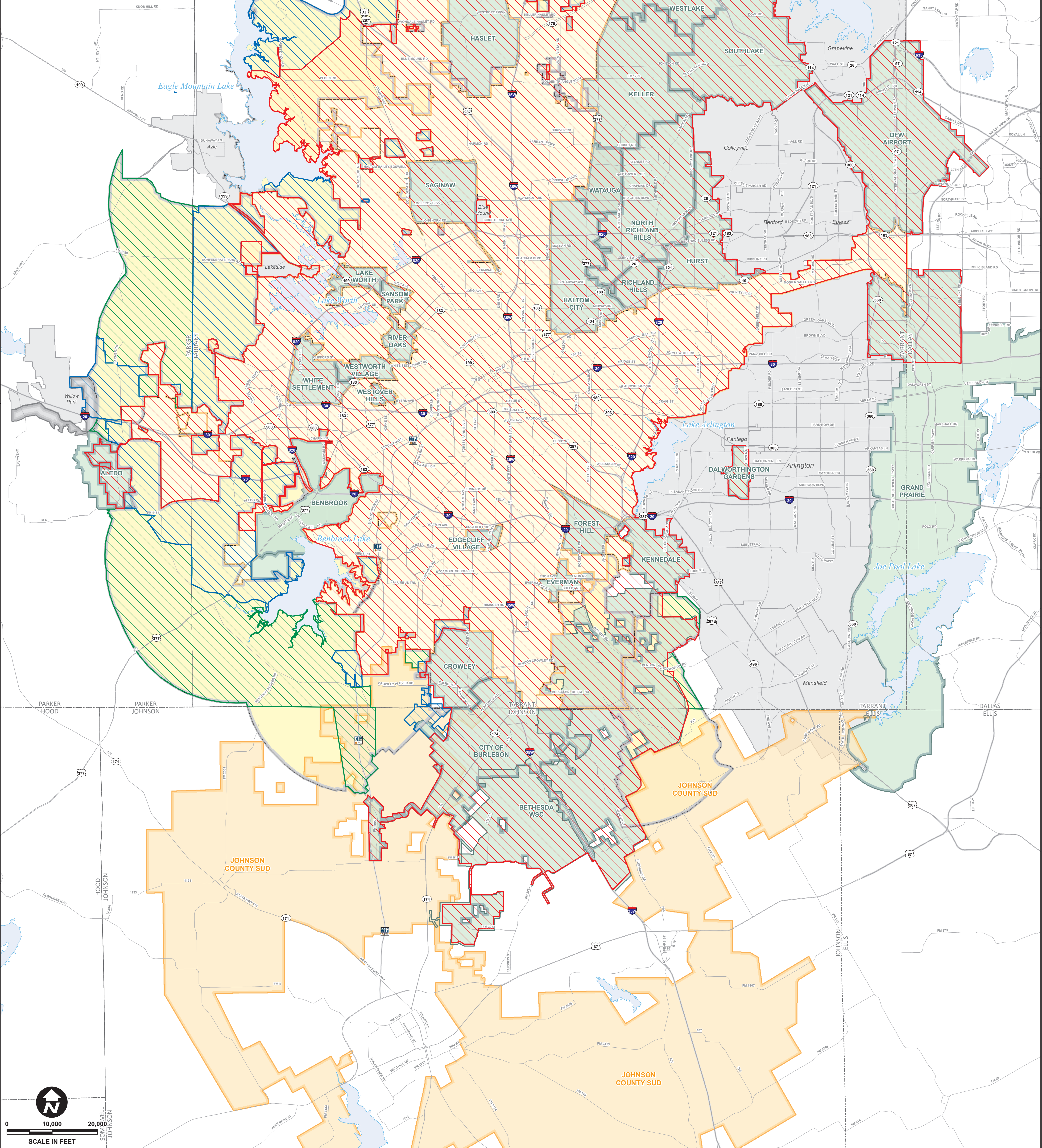
LEGEND

-  2017 Water Service Area
-  2027 Water Service Area
-  2037 Water Service Area
-  Other Water CCN
-  Other City ETJ
-  Water Wholesaler Customer
-  Road
-  Lake
-  Fort Worth City Limit
-  Fort Worth ETJ Boundary
-  Non-Wholesaler Customer
-  County Line



Wholesale Customer	Portion Served by Fort Worth 2017	2027	2037
Aledo	80%	87%	98%
Bethesda Water Supply Corp. ²	70%	70%	85%
Burleson ¹	100%	100%	100%
Crowley ²	95%	99%	100%
D/FW Airport ¹	33%	25%	25%
Dalworthington Gardens	60%	60%	60%
Edgecliff Village ²	100%	100%	100%
Everman ¹	0%	0%	0%
Forest Hill ¹	100%	100%	100%
Grand Prairie ²	9%	8%	7%
Haltom City ¹	100%	100%	100%
Hastet	100%	100%	100%
Hurst	95%	95%	95%
Keller ²	100%	100%	100%
Kennedale ²	30%	30%	30%
Lake Worth	85%	100%	100%
North Richland Hills ²	64%	64%	64%
Northlake ²	50%	55%	60%
Richland Hills ²	100%	100%	100%
River Oaks * ²	0%	0%	0%
Roanoke ¹	100%	100%	100%
Saginaw	100%	100%	100%
Sansom Park * ²	0%	0%	0%
Southlake	100%	100%	100%
Trinity River Authority * ¹	0%	0%	0%
Trophy Club MUD No. 1 ²	90%	95%	95%
Westlake ¹	100%	100%	100%
Westover Hills	100%	100%	100%
Westworth Village ²	100%	100%	100%
White Settlement ¹	55%	55%	55%

*Denotes Emergency Use Contract, not regular user
¹ Survey not received, data taken from the 2012 Impact Fee Update
² Survey received, FNI filled in missing data



FREESE AND NICHOLS, INC.
4055 INTERNATIONAL PLAZA, SUITE 200
FORT WORTH, TEXAS 76109
817-735-7300

www.freese.com