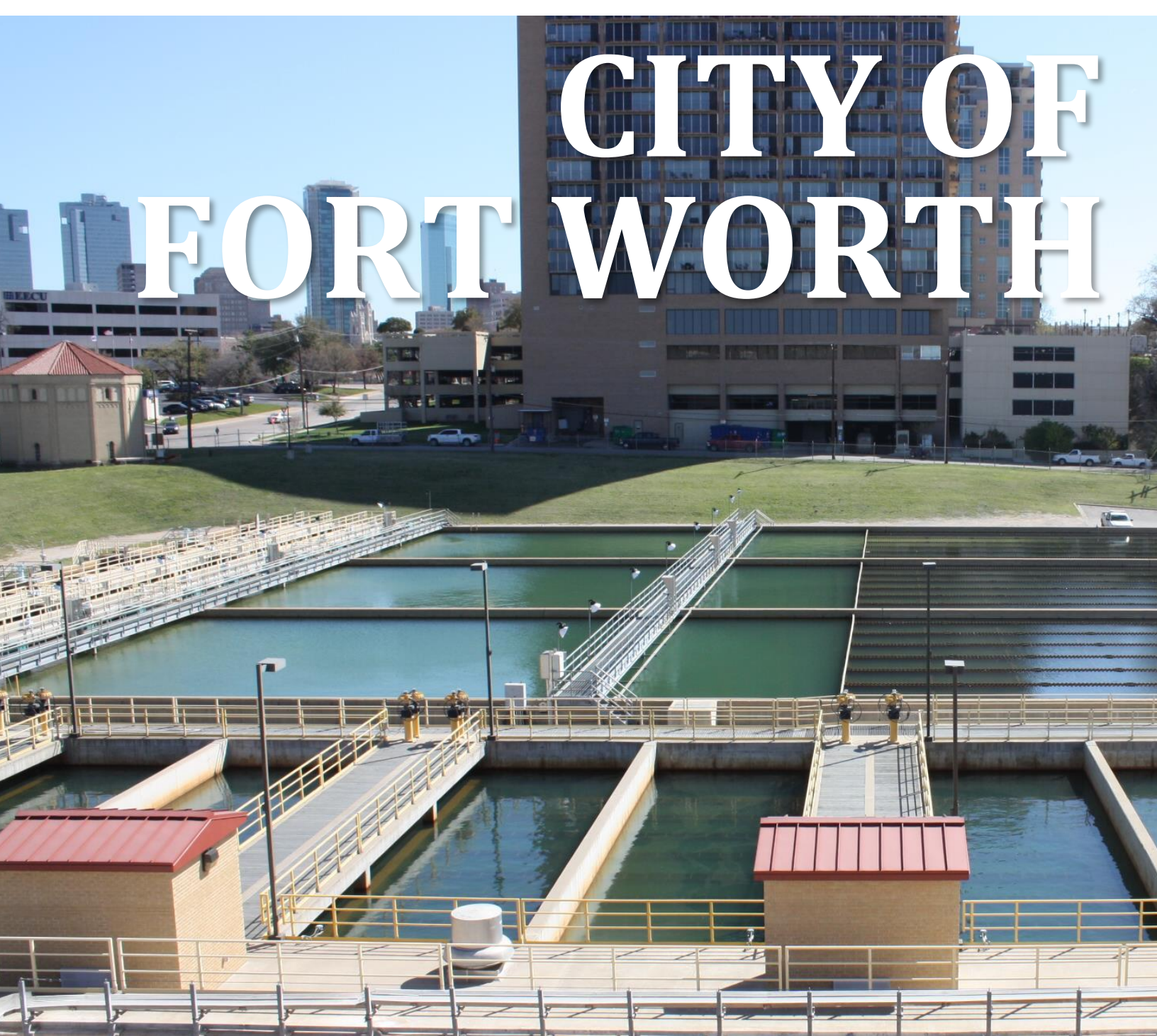


CITY OF FORT WORTH



WATER/WASTEWATER IMPACT FEE UPDATE



EXHIBIT C: SERVICE AREA - WATER (2022 – 2041)

PREPARED BY:
FREESE AND NICHOLS, INC.
801 CHERRY STREET, SUITE 2800
FORT WORTH, TEXAS 76102
817-735-7300





Innovative approaches
Practical results
Outstanding service

WATER & WASTEWATER IMPACT FEE UPDATE

EXHIBIT C: WATER SERVICE AREA (2022 – 2041)

Prepared for:

Fort Worth Water



July 22, 2021

Prepared by:

FREESE AND NICHOLS, INC.

801 Cherry Street, Suite 2800

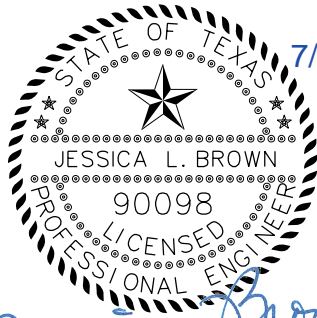
Fort Worth, Texas 76102

817-735-7300

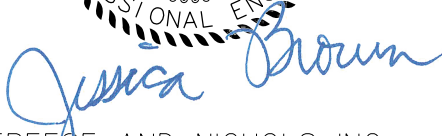
WATER & WASTEWATER IMPACT FEE UPDATE

Prepared for:

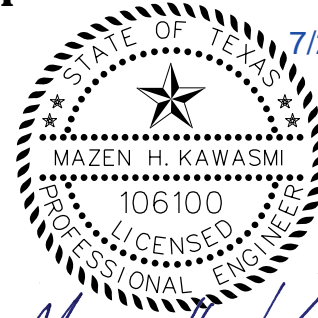
Fort Worth Water



7/22/2021



FREESE AND NICHOLS, INC.
TEXAS REGISTERED
ENGINEERING FIRM
F-2144



7/22/2021



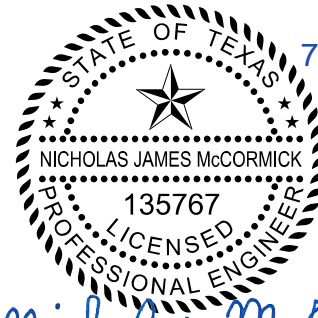
FREESE AND NICHOLS, INC.
TEXAS REGISTERED
ENGINEERING FIRM
F-2144



7/22/2021



FREESE AND NICHOLS, INC.
TEXAS REGISTERED
ENGINEERING FIRM
F-2144



7/22/2021



FREESE AND NICHOLS, INC.
TEXAS REGISTERED
ENGINEERING FIRM
F-2144

Prepared by:

FREESE AND NICHOLS, INC.
801 Cherry Street, Suite 2800
Fort Worth, Texas 76102
817-735-7300

FTW20118

CCN Boundary is from January 26, 2021. Latest CCN boundary can be found at <https://www.puc.texas.gov/industry/water/guidance/UtilRulesGuidance.aspx>

Extraterritorial Jurisdiction (ETJ) Boundary is from January 26, 2021. City Council consideration of changes on May 11, 2021 not included. (See Descriptions Below)

M&C 21-0322 - (ETJ Adjacent to CD 7) Authorize an Interlocal Agreement allocating ETJ and Retail Water and Sewer Service Areas between the Town of Northlake, the City of Justin and the City of Fort Worth, and the First Amendment to Interlocal Agreement allocating ETJ between the City of Fort Worth and the Town of Northlake and adopt the attached Joint Resolution transferring certain ETJ between the City of Fort Worth and the City of Justin; Releasing ETJ by the City of Northlake; Providing for severability; Providing for recordation; and Providing an effective date.

M&C 21-1470 - Resolution Authorizing a Reduction in the City of Fort Worth ETJ by adjusting the ETJ Boundary between Fort Worth and Justin.

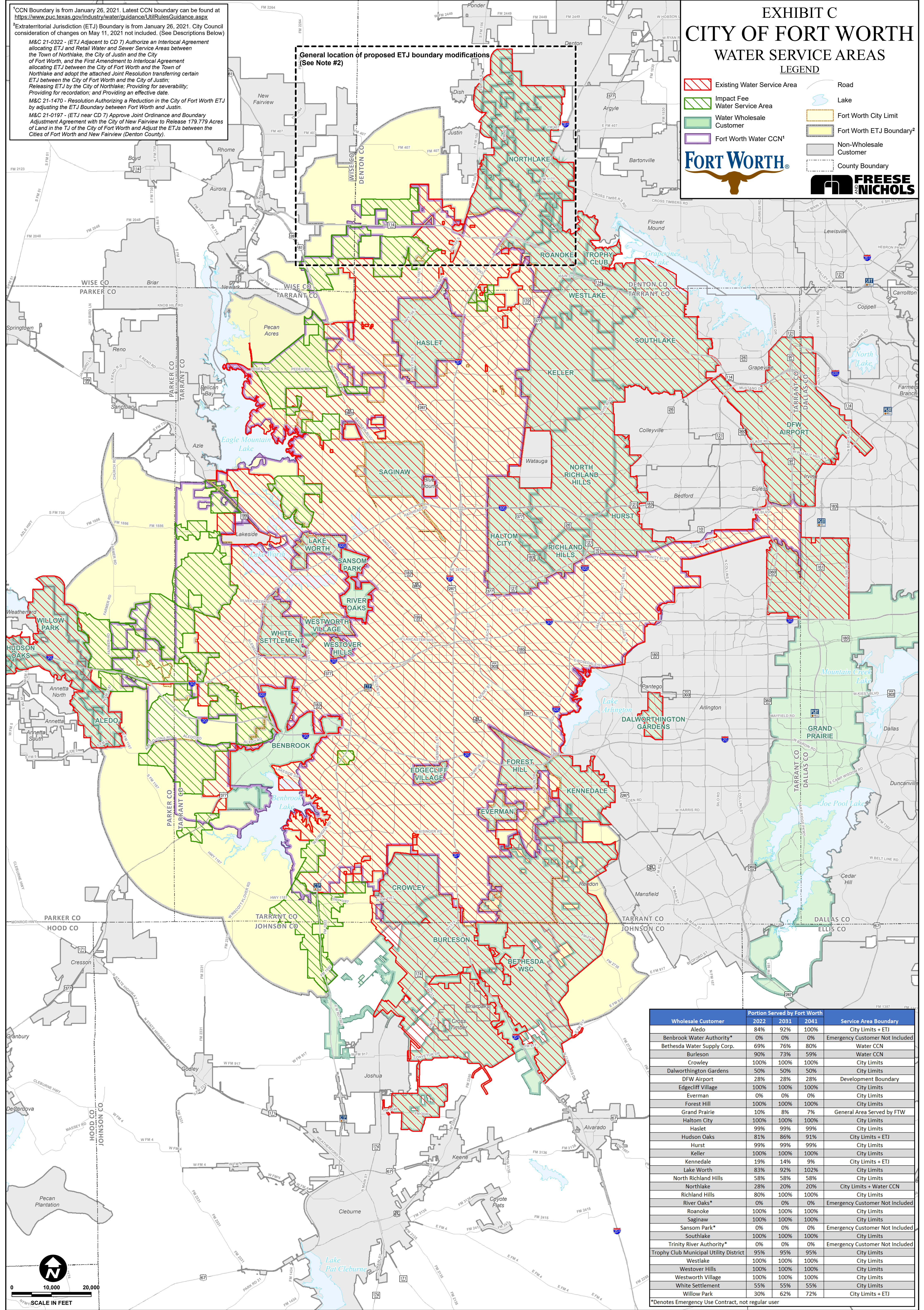
M&C 21-0197 - (ETJ near CD 7) Approve Joint Ordinance and Boundary Adjustment Agreement with the City of New Fairview to Release 179,779 Acres of Land in the TJ of the City of Fort Worth and Adjust the ETJs between the Cities of Fort Worth and New Fairview (Denton County).

General location of proposed ETJ boundary modifications (See Note #2)

EXHIBIT C CITY OF FORT WORTH WATER SERVICE AREAS

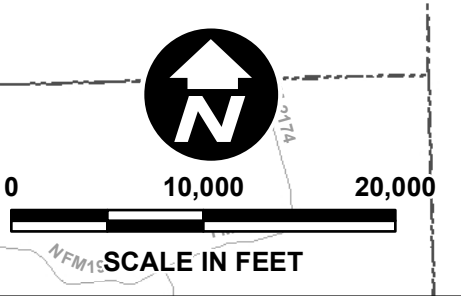
LEGEND

Existing Water Service Area	Road
Impact Fee Water Service Area	Lake
Water Wholesale Customer	Fort Worth City Limit
Fort Worth Water CCN ¹	Fort Worth ETJ Boundary ²
	Non-Wholesale Customer
	County Boundary



Wholesale Customer	2022	2031	2041	Service Area Boundary
Aledo	84%	92%	100%	City Limits + ETJ
Benbrook Water Authority*	0%	0%	0%	Emergency Customer Not Included
Bethesda Water Supply Corp.	69%	76%	80%	Water CCN
Burleson	90%	73%	59%	Water CCN
Crowley	100%	100%	100%	City Limits
Dalworthington Gardens	50%	50%	50%	City Limits
DFW Airport	28%	28%	28%	Development Boundary
Edgecliff Village	100%	100%	100%	City Limits
Everman	0%	0%	0%	City Limits
Forest Hill	100%	100%	100%	City Limits
Grand Prairie	10%	8%	7%	General Area Served by FTW
Haltom City	100%	100%	100%	City Limits
Haslet	99%	99%	99%	City Limits
Hudson Oaks	81%	86%	91%	City Limits + ETJ
Hurst	99%	99%	99%	City Limits
Keller	100%	100%	100%	City Limits
Kennedale	19%	14%	9%	City Limits + ETJ
Lake Worth	83%	92%	102%	City Limits
North Richland Hills	58%	58%	58%	City Limits
Northlake	28%	20%	20%	City Limits + Water CCN
Richland Hills	80%	100%	100%	City Limits
River Oaks*	0%	0%	0%	Emergency Customer Not Included
Roanoke	100%	100%	100%	City Limits
Saginaw	100%	100%	100%	City Limits
Sansom Park*	0%	0%	0%	Emergency Customer Not Included
Southlake	100%	100%	100%	City Limits
Trinity River Authority*	0%	0%	0%	Emergency Customer Not Included
Trophy Club Municipal Utility District	95%	95%	95%	City Limits
Westlake	100%	100%	100%	City Limits
Westover Hills	100%	100%	100%	City Limits
Westworth Village	100%	100%	100%	City Limits
White Settlement	55%	55%	55%	City Limits
Willow Park	30%	62%	72%	City Limits + ETJ

*Denotes Emergency Use Contract, not regular user



FREESE AND NICHOLS, INC.
801 CHERRY STREET, SUITE 2800
FORT WORTH, TEXAS 76102
817-735-7300

www.freese.com